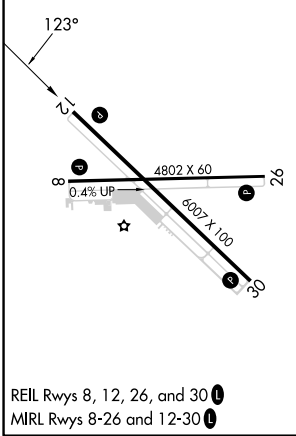
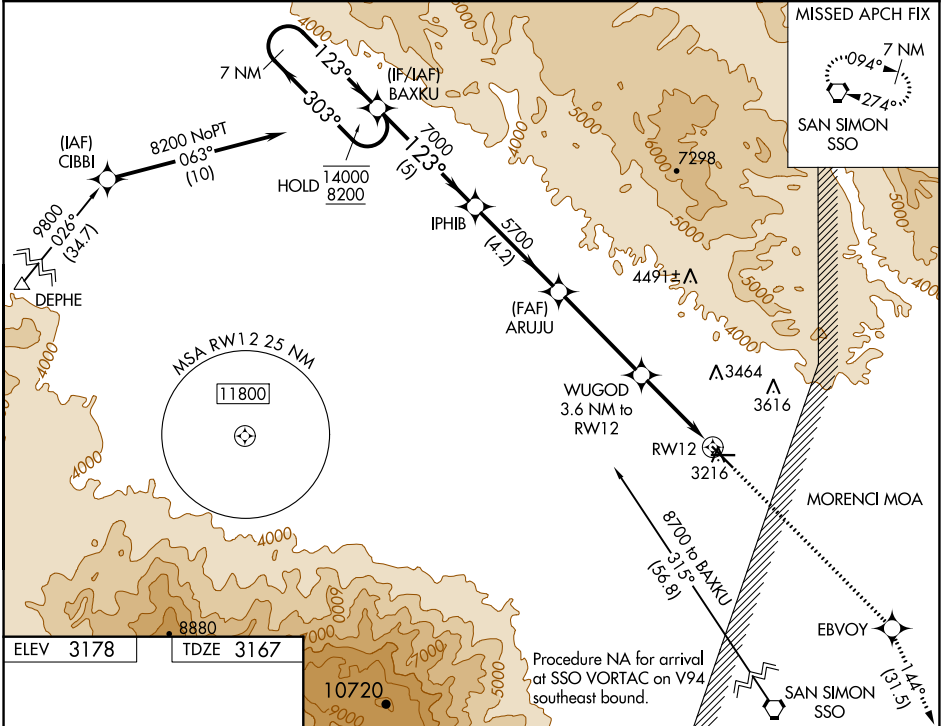


WAAS CH 69516 W12A	APP CRS 123°	Rwy Idg TDZE Apt Elev	6007 3167 3178
--	------------------------	-----------------------------	---

RNAV (GPS) RWY 12

SAFFORD RGNL (SAD)

RNP APCH - GPS.		MISSED APPROACH: Climb to 10000 direct EBVOY and on track 144° to SSO VORTAC and hold.	
<p>⚠ Circling to Rwy 8 NA at night. Circling NA northeast of Rwy 12 and north of Rwy 26. For uncompensated Baro-VNAV systems, LNAV/VNAV NA below -6°C or above 54°C.</p>			
ASOS 124.175	ALBUQUERQUE CENTER 134.45 327.15	UNICOM 122.8 (CTAF) 0	



7 NM Holding Pattern		IPHIB		ARUJU		10000 EBVOY		tr 144° SSO	
14000 ← 303°		7000		5700		WUGOD 3.6 NM to RW12		RW12	
8200 123° →		5700		4360		3.6 NM to 1 NM to RW12		RW12	
GP 3.00°		5 NM		4.2 NM		4.2 NM		2.7 NM	
TCH 40		A		B		C		D	
CATEGORY		A		B		C		D	
LPV DA		3417-¾		250 (300-¾)					
LNAV/VNAV DA		3417-¾		250 (300-¾)					
LNAV MDA		3520-1		353 (400-1)					
CIRCLING		3580-1 402 (500-1)		3640-1 462 (500-1)		3640-1½ 462 (500-1½)		3900-2¼ 722 (800-2¼)	

SAFFORD, ARIZONA
Amdt 1 30NOV23

32°51'N-109°38'W

SAFFORD RGNL (SAD)
RNAV (GPS) RWY 12

SW-4, 22 FEB 2024 to 21 MAR 2024

SW-4, 22 FEB 2024 to 21 MAR 2024

WAAS CH 78316 W30A	APP CRS 303°	Rwy Idg TDZE Apt Elev	6007 3169 3178
--	------------------------	-----------------------------	---

RNAV (GPS) RWY 30

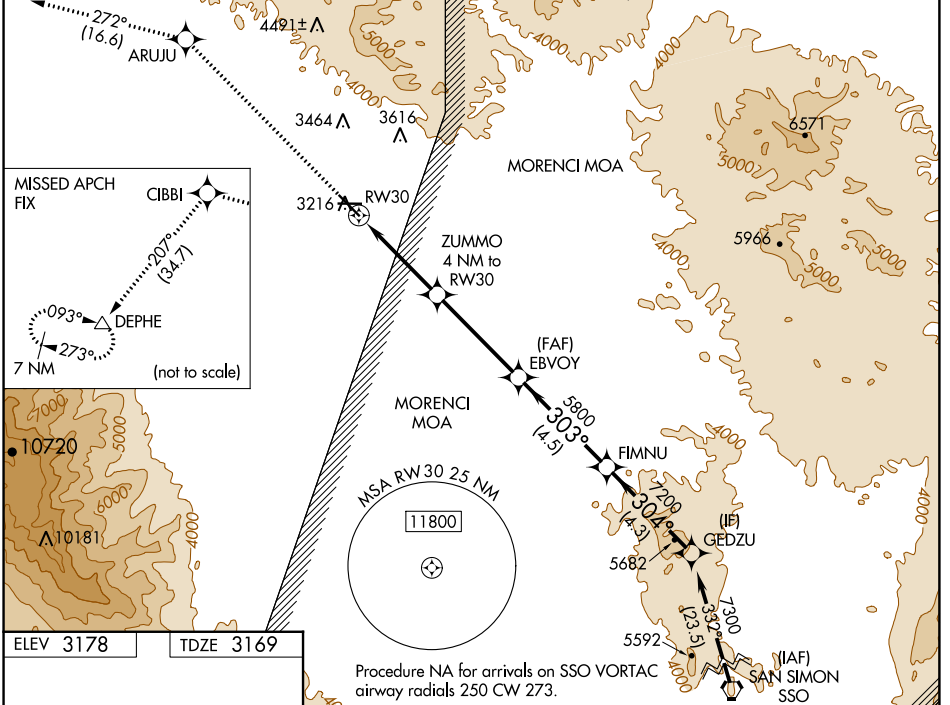
SAFFORD RGNL (SAD)

RNP APCH - GPS.

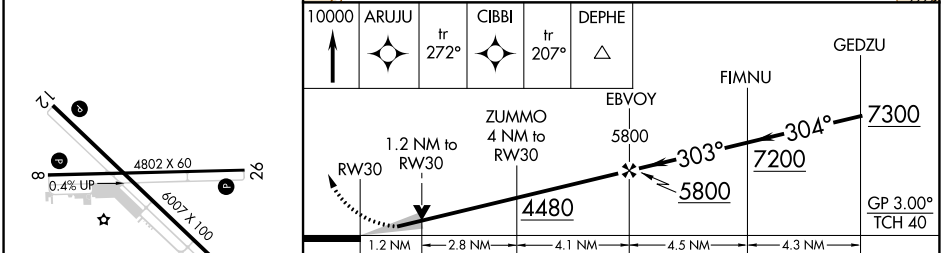
⚠ Circling to Rwy 8 NA at night. Circling NA northeast of Rwy 12 and north of Rwy 26. For uncompensated Baro-VNAV systems, LNAV/VNAV NA below -6°C or above 54°C.

⚠ MISSED APPROACH: Climb to 10000 direct ARUJU and on track 272° to CIBBI and on track 207° to DEPHE and hold.

ASOS 124.175	ALBUQUERQUE CENTER 134.45 327.15	UNICOM 122.8 (CTAF) 0
------------------------	--	---------------------------------



ELEV 3178	TDZE 3169
-----------	-----------



CATEGORY	A	B	C	D
LPV DA	3419-3/4 250 (300-3/4)			
LNAV/VNAV DA	3517-1 348 (400-1)			
LNAV MDA	3600-1	431 (500-1)	3600-1 1/4	431 (500-1 1/4)
CIRCLING	3600-1 422 (500-1)	3640-1 462 (500-1)	3640-1 1/2 462 (500-1 1/2)	3900-2 1/4 722 (800-2 1/4)

SW-4, 22 FEB 2024 to 21 MAR 2024

SW-4, 22 FEB 2024 to 21 MAR 2024