

NDB RYV	APP CRS	Rwy ldg	<b>4429</b>
<b>371</b>	<b>254°</b>	TDZE	<b>823</b>
		Apt Elev	<b>833</b>

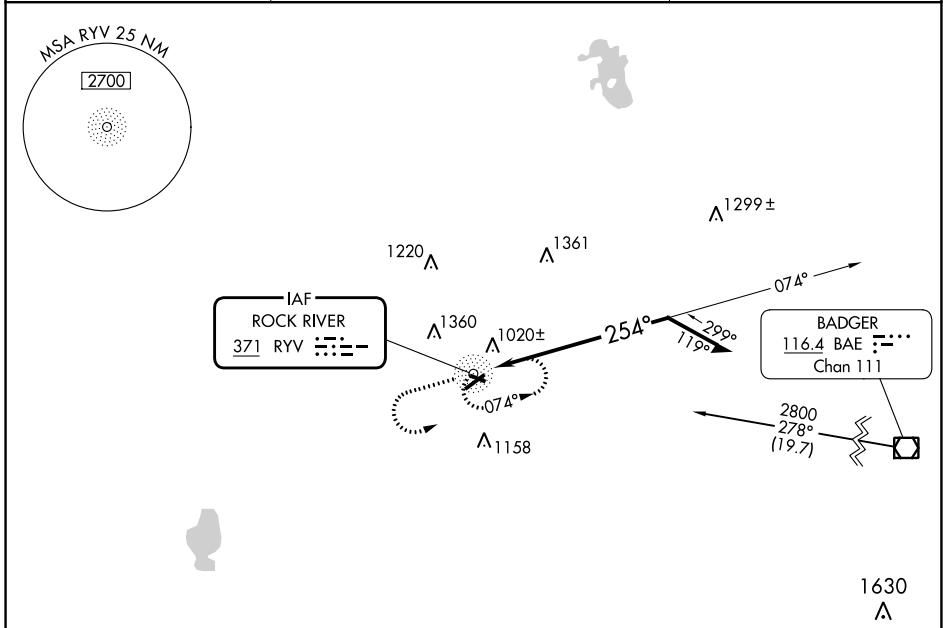
# NDB RWY 23

WATERTOWN MUNI (RYV)

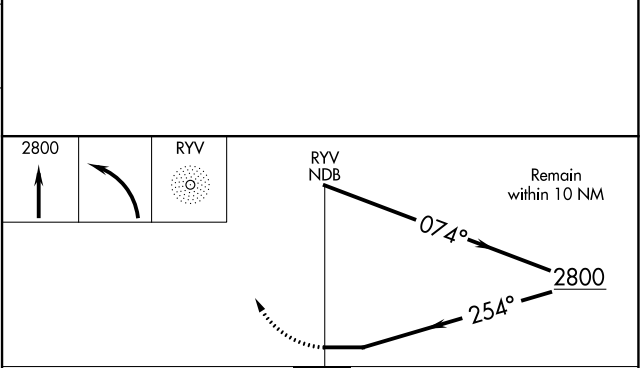
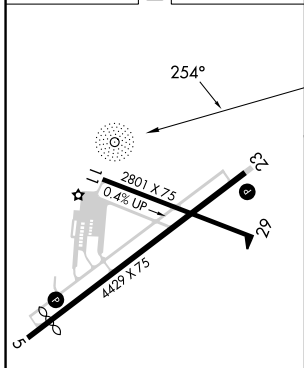
**⚠** Rwy 23 helicopter visibility reduction below 1 SM NA. When local altimeter setting not received, use Dodge County altimeter setting and increase all MDA 60 feet, and increase visibility Cat A, C and D ¼ mile. Straight-In Rwy 23 NA at night, Circling Rwy 23 NA at night.

**MISSED APPROACH:** Climb to 2800 then left turn direct RYV NDB and hold.

AWOS-3 <b>119.975</b>	MADISON APP CON * <b>119.15 343.7</b>	UNICOM <b>122.8 (CTAF) 0</b>
--------------------------	--	---------------------------------



ELEV 833	<b>D</b>	TDZE 823
----------	----------	----------



CATEGORY	A	B	C	D
S-23	1660-1 837 (900-1)	1660-1¼ 837 (900-1¼)	1660-2½ 837 (900-2½)	1660-2¾ 837 (900-2¾)
CIRCLING	1660-1¼	827 (900-1¼)	1720-2¾ 887 (900-2¾)	1720-3 887 (900-3)

EC-3, 22 FEB 2024 to 21 MAR 2024

EC-3, 22 FEB 2024 to 21 MAR 2024

NDB RYV	APP CRS	Rwy Idg	<b>4239</b>
<b>371</b>	<b>039°</b>	TDZE	<b>821</b>
		Apt Elev	<b>833</b>

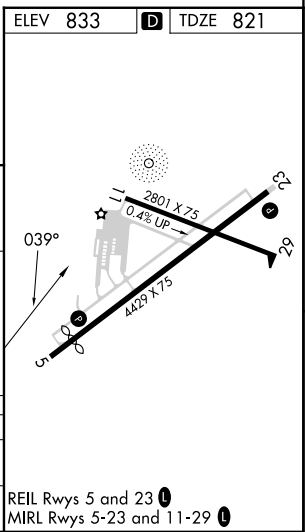
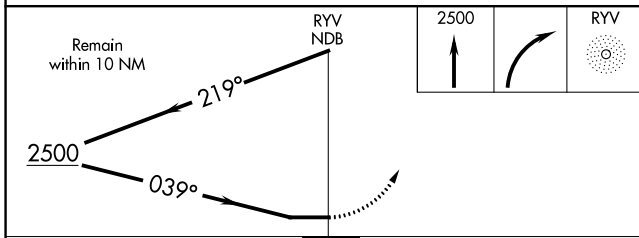
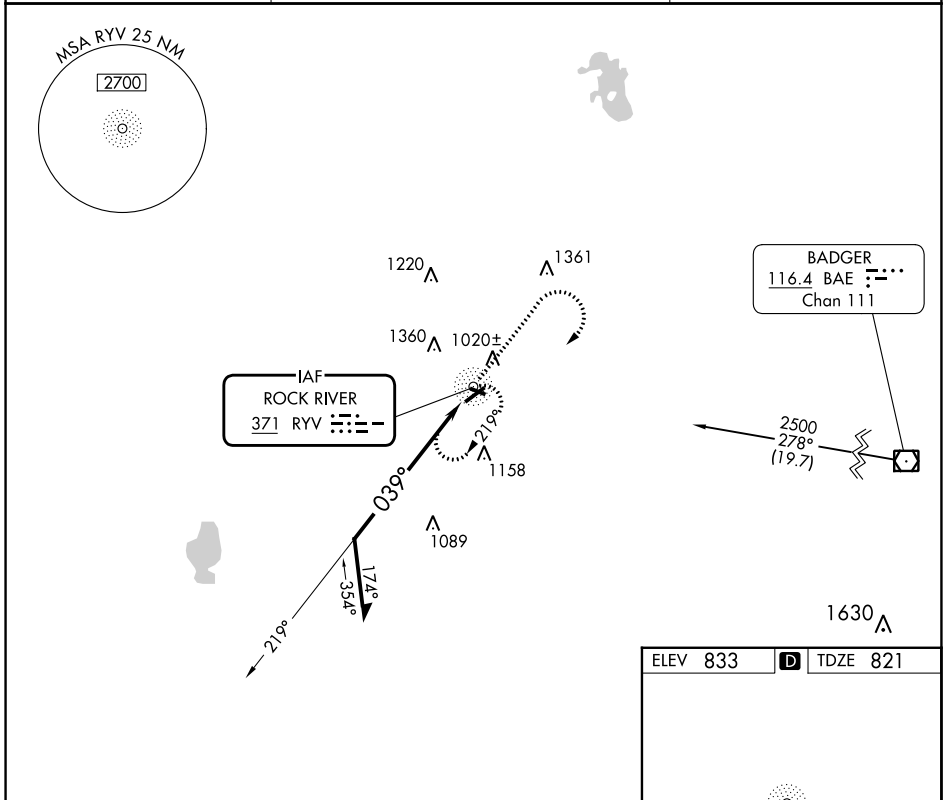
# NDB RWY 5

WATERTOWN MUNI (RYV)

**⚠** Rwy 5 helicopter visibility reduction below 1 SM NA.  
**⚠** NA Straight-In Rwy 5 NA at night, Circling Rwy 5, 23 NA at night.

MISSED APPROACH: Climb to 2500 then right turn direct RYV NDB and hold.

AWOS-3 <b>119.975</b>	MADISON APP CON * <b>119.15 343.7</b>	UNICOM <b>122.8 (CTAF) 0</b>
--------------------------	--	---------------------------------



CATEGORY	A	B	C	D
S-5	1460-1	639 (700-1)	1460-1¾ 639 (700-1¾)	1460-2 639 (700-2)
CIRCLING	1460-1	627 (700-1)	1720-2¾ 887 (900-2¾)	1720-3 887 (900-3)

EC-3, 22 FEB 2024 to 21 MAR 2024

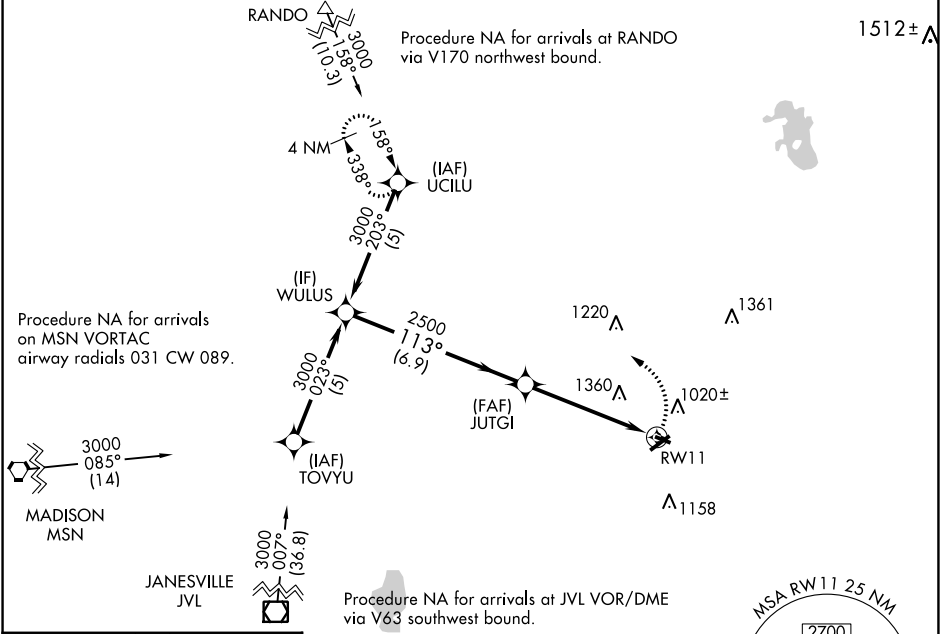
EC-3, 22 FEB 2024 to 21 MAR 2024

APP CRS <b>113°</b>	Rwy Idg <b>2801</b>
	TDZE <b>833</b>
	Apt Elev <b>833</b>

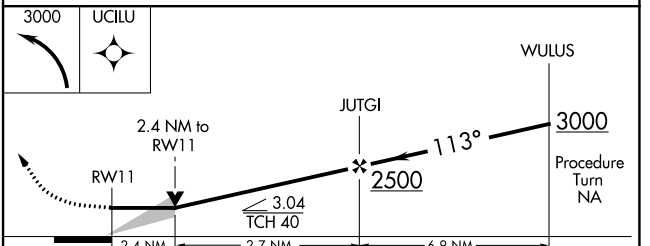
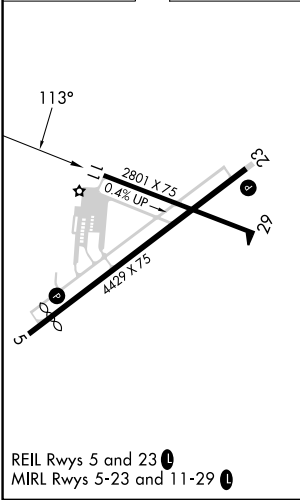
# RNAV (GPS) RWY 11

WATERTOWN MUNI (RYV)

RNP APCH.		MISSED APPROACH: Climbing left turn to 3000 direct UCILU and hold.
<p><b>▼</b> When local altimeter setting not received, use Dodge County altimeter setting and increase all MDAs 60 feet and Circling visibility Cat A ¼ SM. VDP NA when using Dodge County altimeter setting. Circling Rwy 23 NA at night.</p>		
AWOS-3 <b>119.975</b>	MADISON APP CON * <b>119.15 343.7</b>	UNICOM <b>122.8 (CTAF) 0</b>



ELEV 833 **D** TDZE 833



	A	B	C	D
CATEGORY	A	B	C	D
LNAV MDA	1640-1 807 (900-1)	1640-1¼ 807 (900-1¼)	1640-2½	807 (900-2½)
CIRCLING	1640-1 807 (900-1)	1640-1¼ 807 (900-1¼)	1720-2¾ 887 (900-2¾)	1720-3 887 (900-3)

EC-3, 22 FEB 2024 to 21 MAR 2024

EC-3, 22 FEB 2024 to 21 MAR 2024

APP CRS	Rwy Idg	<b>4429</b>
<b>234°</b>	TDZE	<b>823</b>
	Apt Elev	<b>833</b>

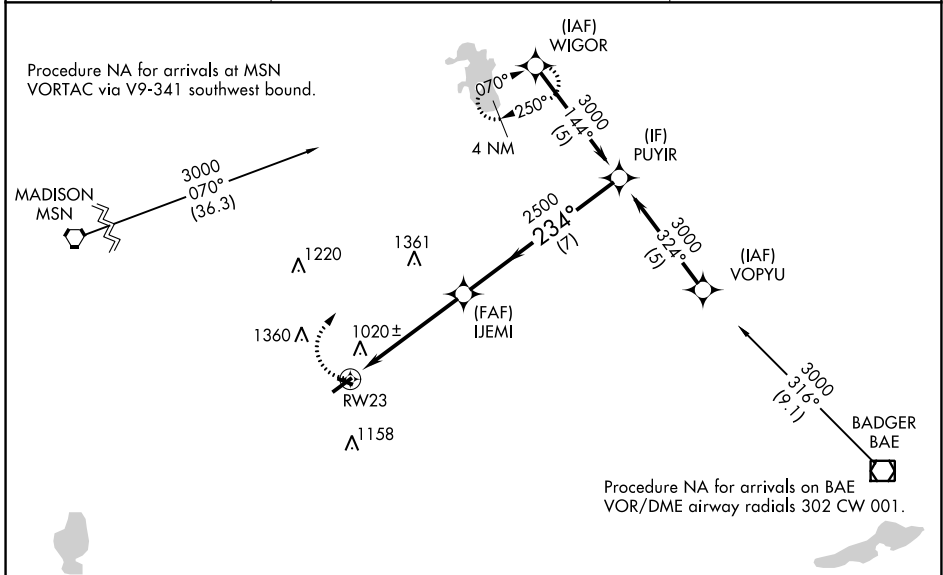
# RNAV (GPS) RWY 23

WATERTOWN MUNI (RYV)

**⚠** Rwy 23 helicopter visibility reduction below 1 SM NA. DME/DME RNP-0.3 NA. When local altimeter setting not received, use Dodge County altimeter setting and increase all MDAs 60 feet, increase LNAV Cat C and D visibility 1/8 SM. Straight-in Rwy 23 NA at night, Circling Rwy 23 NA at night.

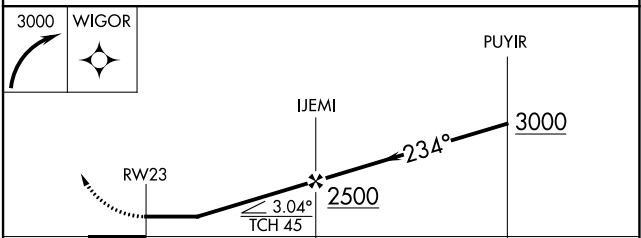
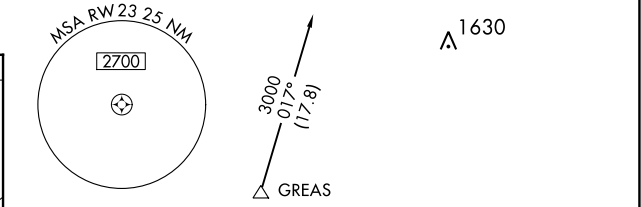
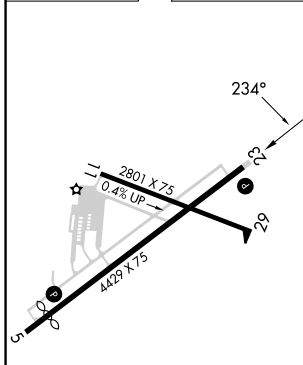
**⚠** MISSED APPROACH: Climbing right turn to 3000 direct WIGOR and hold.

AWOS-3 <b>119.975</b>	MADISON APP CON * <b>119.15 343.7</b>	UNICOM <b>122.8 (CTAF)</b>
--------------------------	--	-------------------------------



Procedure NA for arrivals at MSN VORTAC via V9-341 southwest bound.

ELEV 833	<b>D</b>	TDZE 823
----------	----------	----------



CATEGORY	A	B	C	D
LNAV MDA	1420-1 597 (600-1)		1420-1 597 (600-1 3/4)	1420-1 597 (600-1 3/4)
CIRCLING	1420-1 587 (600-1)	1440-1 607 (700-1)	1720-2 887 (900-2 3/4)	1720-3 887 (900-3)

EC-3, 22 FEB 2024 to 21 MAR 2024

EC-3, 22 FEB 2024 to 21 MAR 2024

APP CRS	Rwy Idg	<b>2801</b>
<b>293°</b>	TDZE	<b>833</b>
	Apt Elev	<b>833</b>

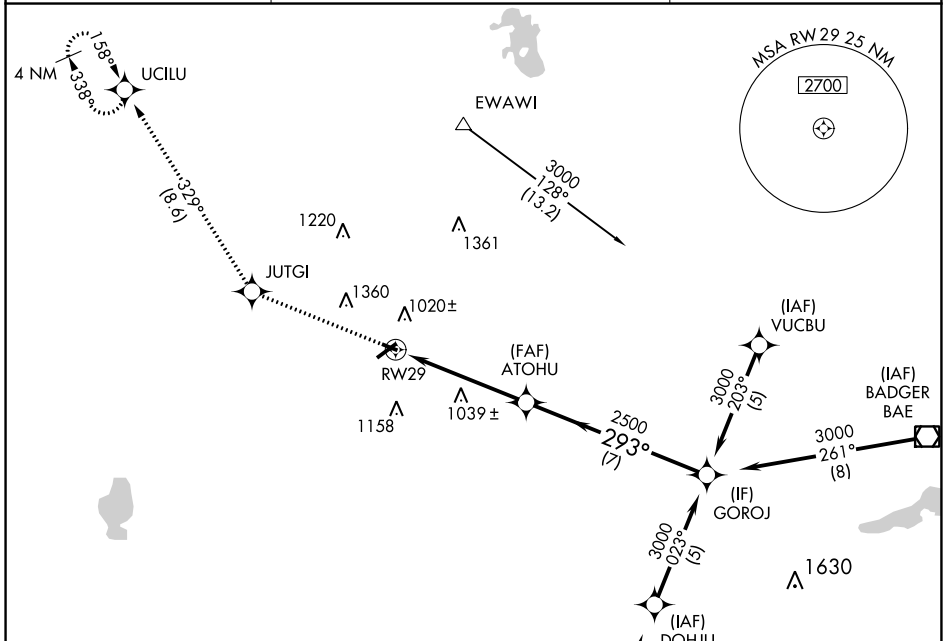
# RNAV (GPS) RWY 29

WATERTOWN MUNI (RYV)

**⚠** Circling to Rwy 23 NA at night. Rwy 29 helicopter visibility reduction below 1 SM NA. DME/DME RNP-0.3 NA. When local altimeter setting not received, use Dodge County altimeter setting and increase all MDAs 60 feet and LNAV visibility Cat C/D 1/8 SM.

**MISSED APPROACH:** Climb to 3000 direct JUTGI and right turn via 329° track to UCILU and hold.

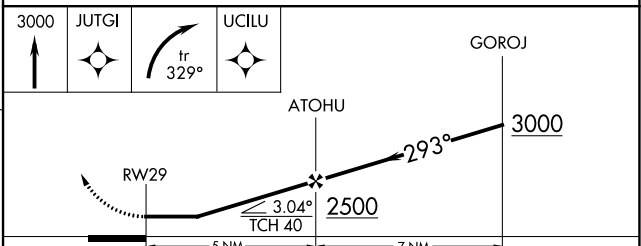
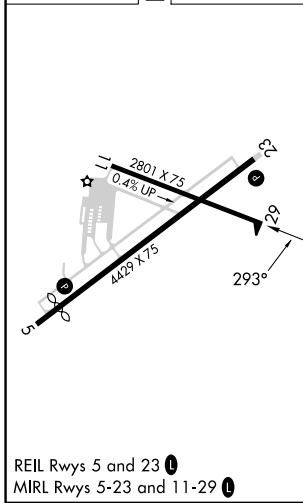
AWOS-3 <b>119.975</b>	MADISON APP CON * <b>119.15 343.7</b>	UNICOM <b>122.8 (CTAF)</b>
--------------------------	--	-------------------------------



EC-3, 22 FEB 2024 to 21 MAR 2024

EC-3, 22 FEB 2024 to 21 MAR 2024

ELEV 833	<b>D</b>	TDZE 833
----------	----------	----------



CATEGORY	A	B	C	D
LNAV MDA	1400-1 567 (600-1)		1400-1½ 567 (600-1½)	1400-1¾ 567 (600-1¾)
CIRCLING	1400-1 567 (600-1)	1440-1 607 (700-1)	1720-2¾ 887 (900-2¾)	1720-3 887 (900-3)

APP CRS	Rwy Idg	<b>4239</b>
<b>054°</b>	TDZE	<b>821</b>
	Apt Elev	<b>833</b>

# RNAV (GPS) RWY 5

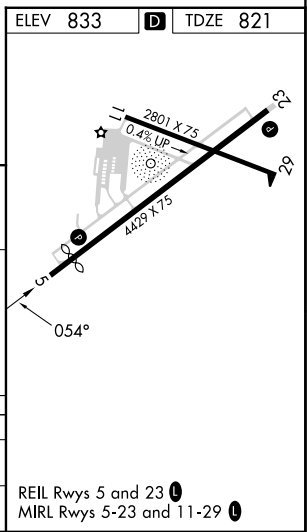
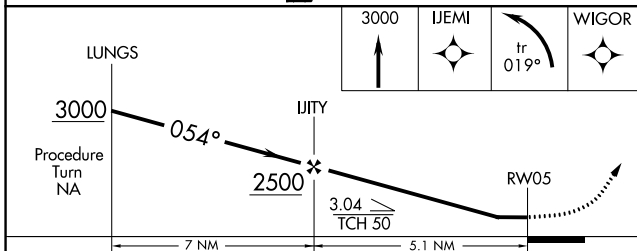
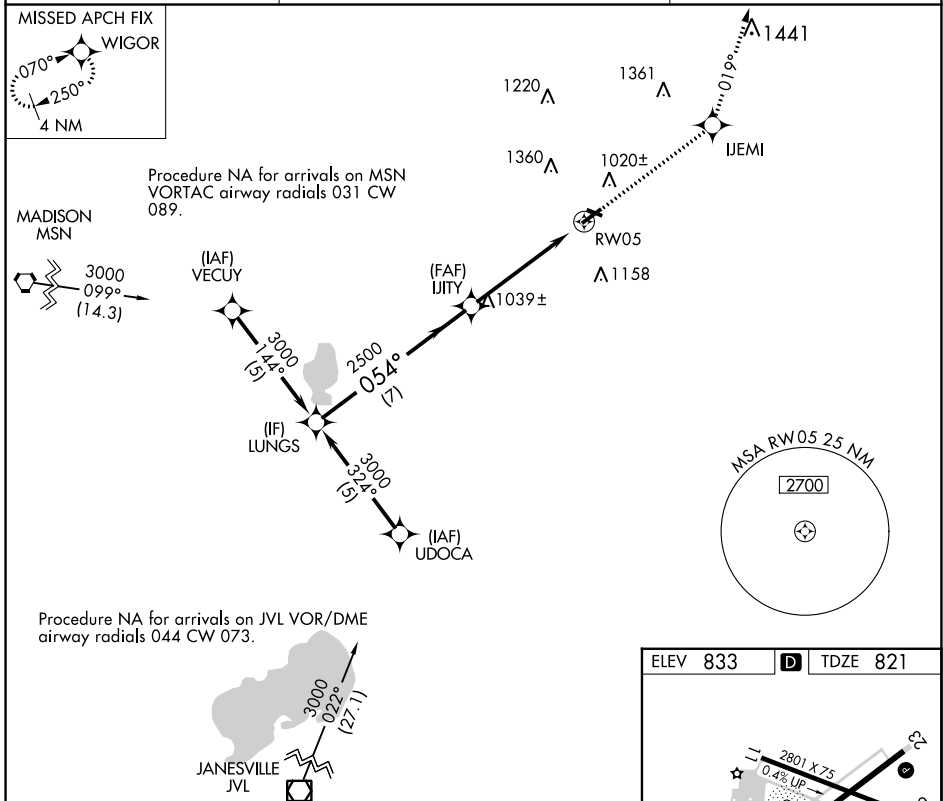
WATERTOWN MUNI (RYV)

RNP APCH.

▼ Rwy 5 helicopter visibility reduction below 3/4 SM NA. When local altimeter setting not received, use Dodge County altimeter setting and increase all MDAs 60 feet, increase LNAV Cat C visibility 1/2 SM. Circling Rwy 23 NA at night.

MISSED APPROACH: Climb to 3000 direct IJEMI and left turn on 019° track to WIGOR and hold.

AWOS-3 <b>119.975</b>	MADISON APP CON * <b>119.15 343.7</b>	UNICOM <b>122.8 (CTAF)</b>
--------------------------	--	-------------------------------



CATEGORY	A	B	C	D
LNAV MDA	1440-1	619 (700-1)	1440-1 3/4 619 (700-1 3/4)	1440-2 619 (700-2)
CIRCLING	1440-1	607 (700-1)	1720-2 3/4 887 (900-2 3/4)	1720-3 887 (900-3)

EC-3, 22 FEB 2024 to 21 MAR 2024

EC-3, 22 FEB 2024 to 21 MAR 2024