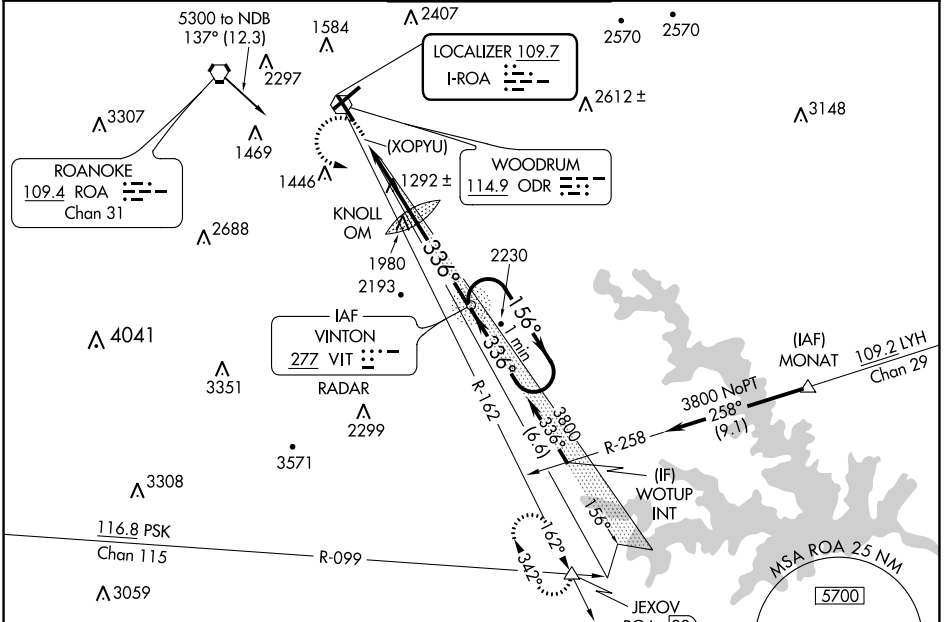


LOC I-ROA 109.7	APP CRS 336°	Rwy ldg 5810
		TDZE 1160
		Apt Elev 1175

ILS or LOC RWY 34

ROANOKE/BLACKSBURG RGNL (WOODRUM FLD) (R.O.A)

	Circling NA northwest of Rwy 6-24. ADF or RADAR required. For inop MALS, increase S-ILS 34 all Cats visibility 1/2 mile and S-LOC 34 Cat B 1/4 mile, Cats C/D 5/8 mile. Inop table does not apply to S-LOC 34 Cat A.	MALS 	MISSED APPROACH: Climb to 2100 then climbing left turn to 5000 on heading 125° and ODR R-162 to JEXOV INT/ROA 22 DME and hold.	
	ATIS 132.375	ROANOKE APP CON 126.9 339.8	ROANOKE TOWER 118.3 257.8	GND CON 121.9 257.8



NE-3, 22 FEB 2024 to 21 MAR 2024

NE-3, 22 FEB 2024 to 21 MAR 2024

ELEV 1175		TDZE 1160
-----------	--	-----------

Knots	60	90	120	150	180
Min:Sec	7:06	4:44	3:33	2:50	2:22

2100	5000	ODR R-162	JEXOV	VIT NDB RADAR	One Minute Holding Pattern
	hdg 125°				
* LOC only.					
(XOPYU) 2527 2560*		KNOLL OM 2527	3780	3800	GS 3.00° TCH 56
0.8		3.3 NM		3.8 NM	
CATEGORY	A	B	C	D	
S-ILS 34	1810-1 3/4		650 (700-1 3/4)		1913-2 1/4 753 (700-2 1/4)
S-LOC 34	1980-1		820 (900-1)		1980-1 7/8
	805 (900-1)		805 (900-1 1/4)		820 (900-1 1/8)
CIRCLING	1980-1		2420-3		2800-3
	805 (900-1)		1245 (1300-3)		1625 (1700-3)

ILS or LOC RWY 34

LOC/DME I-SZK 111.1 Chan 48	APP CRS 072°	Rwy Idg 6800 TDZE 1175 Apt Elev 1175
---	------------------------	---

LDA Y RWY 6

ROANOKE/BLACKSBURG RGNL (WOODRUM FLD) (R.O.A)

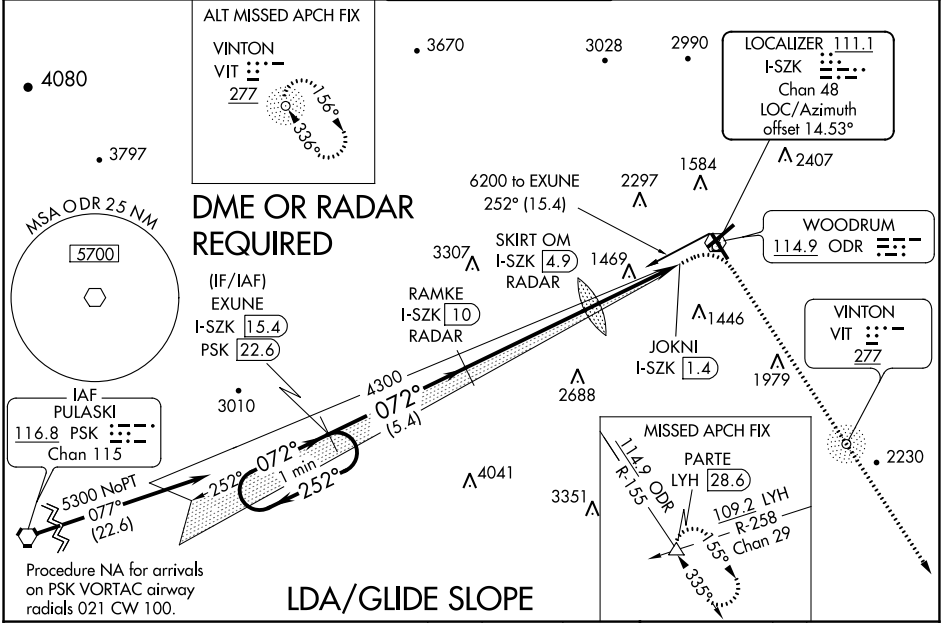
▼ Inop table does not apply to S-LDA 6 Cats C and D. Circling NA NW of Rwy 6-24. For inop MALSR, increase S-LDA/GS 6 all Cats visibility to 1½.

▲ MALSR

⊘ -13° C

MISSED APPROACH: Climb to 1800 then climbing right turn to 5000 on ODR VOR R-155 to PARTE INT/LYH 28.6 DME and hold, continue climb-in-hold to 5000.

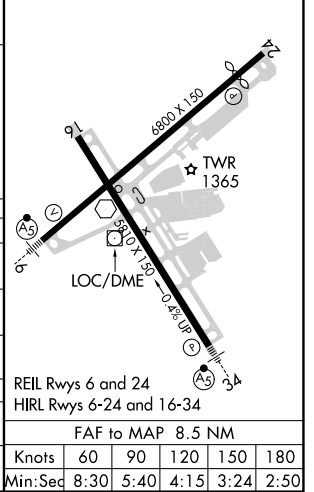
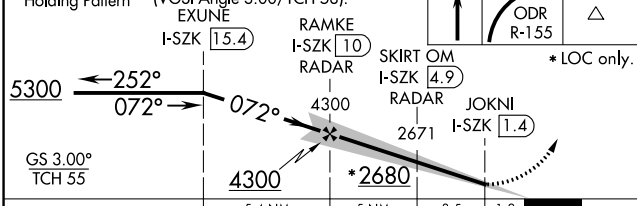
ATIS 132.375	ROANOKE APP CON 126.9 339.8	ROANOKE TOWER 118.3 257.8	GND CON 121.9 257.8	CLNC DEL 119.7
------------------------	---------------------------------------	-------------------------------------	-------------------------------	--------------------------



NE-3, 22 FEB 2024 to 21 MAR 2024

NE-3, 22 FEB 2024 to 21 MAR 2024

One Minute Holding Pattern	VGSI and LDA glidepath not coincident (VGSI Angle 3.00/TCH 58). EXUNE I-SZK 15.4	1800	5000	PARTE	ELEV 1175	D TDZE 1175
----------------------------	--	------	------	-------	-----------	--------------------



CATEGORY	A	B	C	D												
S-LDA/GS 6	1615-1½		440 (500-1½)													
S-LDA 6	2680-1	1505 (1600-1)	2680-3	1505 (1600-3)												
C CIRCLING	2680-1½ 1505 (1600-1½)	2680-1½ 1505 (1600-1½)	2680-3 1505 (1600-3)	2800-3 1625 (1700-3)												
SKIRT OM/DME/RADAR																
S-LDA 6	1720-1	545 (600-1)	1720-1½	545 (600-1½)												
C CIRCLING	1720-1½	545 (600-1½)	2420-3 1245 (1300-3)	2800-3 1625 (1700-3)												
<table border="1"> <tr> <td>Knots</td> <td>60</td> <td>90</td> <td>120</td> <td>150</td> <td>180</td> </tr> <tr> <td>Min:Sec</td> <td>8:30</td> <td>5:40</td> <td>4:15</td> <td>3:24</td> <td>2:50</td> </tr> </table>					Knots	60	90	120	150	180	Min:Sec	8:30	5:40	4:15	3:24	2:50
Knots	60	90	120	150	180											
Min:Sec	8:30	5:40	4:15	3:24	2:50											

LDA Y RWY 6


LOC/DME I-SZK 111.1 Chan 48	APP CRS 072°	Rwy Idg TDZE 1175 Apt Elev 1175
--	------------------------	---

LDA Z RWY 6

ROANOKE/BLACKSBURG RGNL (WOODRUM FLD) (R.O.A)

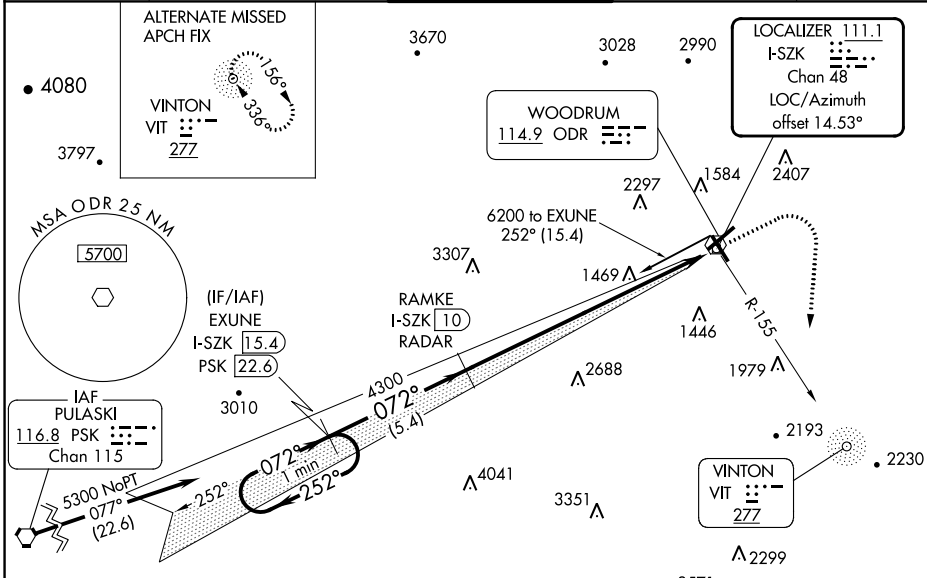
▼ For inop MALSRS, increase S-LDA/GS 6 all Cats visibility to 7/8 mile. Missed approach requires a minimum climb of 350 feet per Nm to 3600, if unable to meet climb gradient, see LDA Y Rwy 6.

☁ 13°C

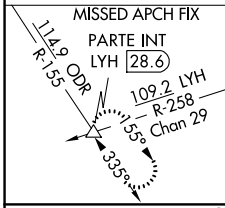
MALSRS


MISSED APPROACH: Climb to 1800 then climbing right turn to 5000 on ODR VOR R-155 to PARTE INT/LYH 28.6 DME and hold, continue climb-in-hold to 5000.

ATIS 132.375	ROANOKE APP CON 126.9 339.8	ROANOKE TOWER 118.3 257.8	GND CON 121.9 257.8	CLNC DEL 119.7
------------------------	---------------------------------------	-------------------------------------	-------------------------------	--------------------------

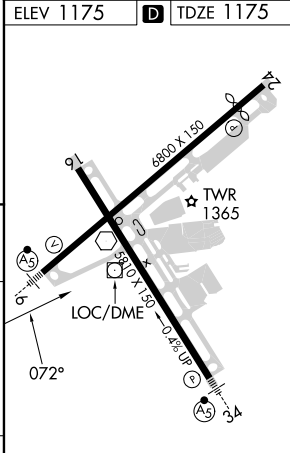
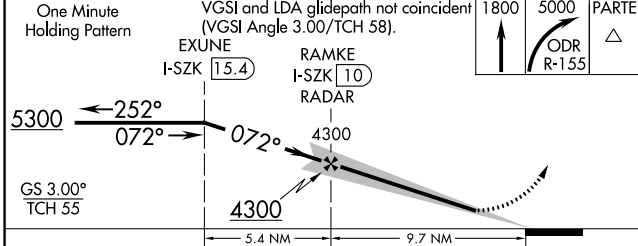


Procedure NA for arrivals on PSK VORTAC airway radials 021 CW 100.



LDA/GLIDE SLOPE DME OR RADAR REQUIRED

ELEV 1175 **TDZE 1175**



CATEGORY	A	B	C	D
S-LDA/GS 6		1475-3/4	300 (300-3/4)	

REIL Rwy 6 and 24
HIRL Rwy 6-24 and 16-34

LDA Z RWY 6

NE-3, 22 FEB 2024 to 21 MAR 2024

NE-3, 22 FEB 2024 to 21 MAR 2024

APP CRS	Rwy Idg	6010
238°	TDZE	1170
	Apt Elev	1175

RNAV (RNP) Z RWY 24

ROANOKE/BLACKSBURG RGNL (WOODRUM FLD) (R.O.A)

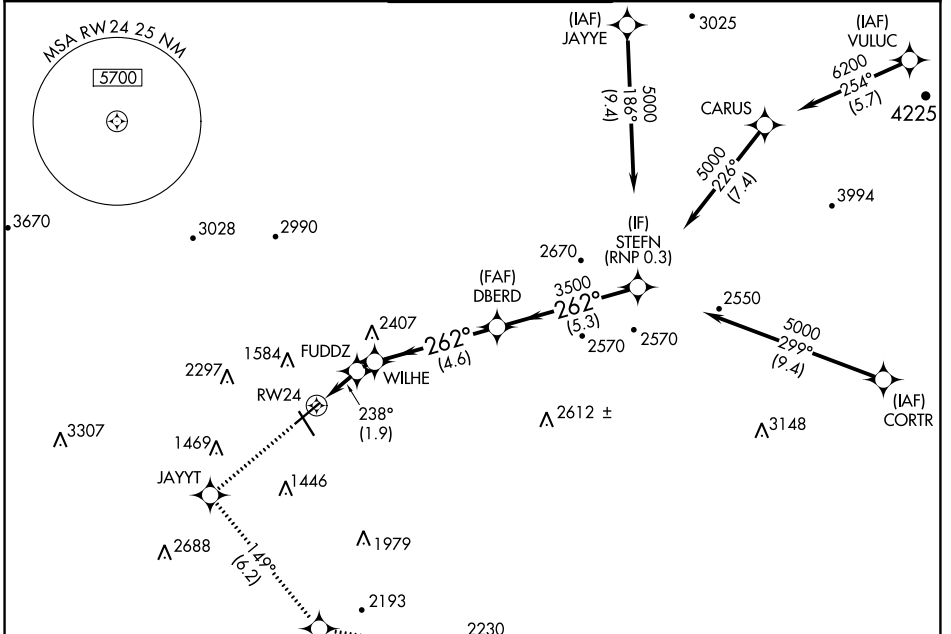
RNP AR APCH - GPS.

▼ For uncompensated Baro-VNAV systems, procedure NA below -14°C or above 54°C.

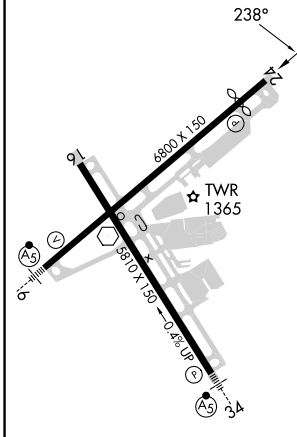
⚠ -13°C

MISSED APPROACH: Climb to 4000 direct JAYYT and on track 149° to TPUCK and on track 107° to MONAT and hold. # Missed approach requires minimum climb of 230 feet per NM to 3200.

ATIS	ROANOKE APP CON	ROANOKE TOWER	GND CON	CLNC DEL
132.375	126.9 339.8	118.3 257.8	121.9 257.8	119.7



ELEV 1175	D	TDZE 1170
-----------	----------	-----------



4000	JAYYT	tr 149°	TPUCK	tr 107°	MONAT
	FUDDZ	1815	WILHE	2045	3500
			DBERD	3500	STEFN
					5000
					GP 3.00
					TCH 55
CATEGORY	A	B	C	D	
# RNP 0.15 DA		1491-1	321 (400-1)		
RNP 0.30 DA		1633-1½	463 (500-1½)		

REIL Rws 6 and 24
HIRL Rws 6-24 and 16-34

AUTHORIZATION REQUIRED

NE-3, 22 FEB 2024 to 21 MAR 2024

NE-3, 22 FEB 2024 to 21 MAR 2024

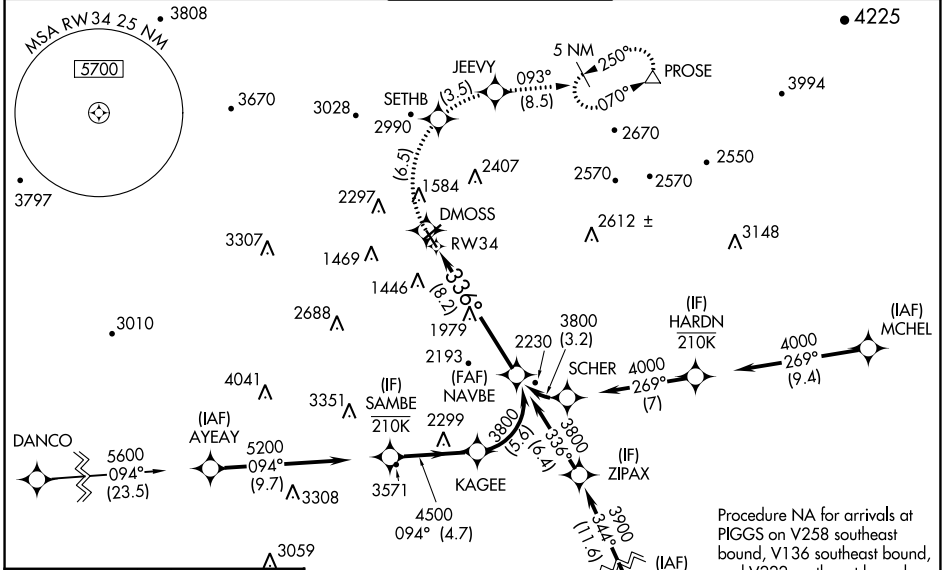
APP CRS	Rwy Idg	5810
336°	TDZE	1160
	Apt Elev	1175

RNAV (RNP) Z RWY 34

ROANOKE/BLACKSBURG RGNL (WOODRUM FLD) (R.O.A)

RNP AR APCH. RF required.	MALSRL	MISSED APPROACH: Climb to 6000 on track 336° to DMOSS, right turn to SETHB, right turn to JEEVY and on track 093° to PROSE and hold. * Missed approach requires minimum climb of 350 feet per NM to 4100. # Missed approach requires minimum climb of 415 feet per NM to 4100.
<p>⚠ Missed approach requires RNP less than 1.0. For inop ALS, increase RNP 0.30* all Cats visibility to 1½ SM. Inop table does not apply to RNP 0.30.</p> <p>❄ -13°C</p> <p>For uncompleted Baro-VNAV systems, procedure NA below -14°C or above 54°C.</p>		

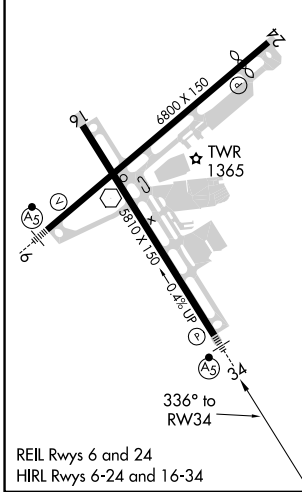
ATIS 132.375	ROANOKE APP CON 126.9 339.8	ROANOKE TOWER 118.3 257.8	GND CON 121.9 257.8	CLNC DEL 119.7
------------------------	---------------------------------------	-------------------------------------	-------------------------------	--------------------------



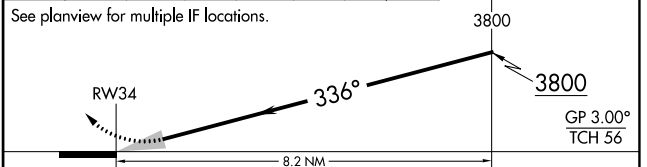
NE-3, 22 FEB 2024 to 21 MAR 2024

NE-3, 22 FEB 2024 to 21 MAR 2024

ELEV 1175	D	TDZE 1160
-----------	----------	-----------



6000	DMOSS	SETHB	JEEVY	PROSE
↑				tr 093°
tr 336°				△



CATEGORY	A	B	C	D
RNP 0.15 DA #		1495-½	335 (400-½)	
RNP 0.30 DA*		1646-1	486 (500-1)	
RNP 0.30 DA		2115-4	955 (1000-4)	

AUTHORIZATION REQUIRED

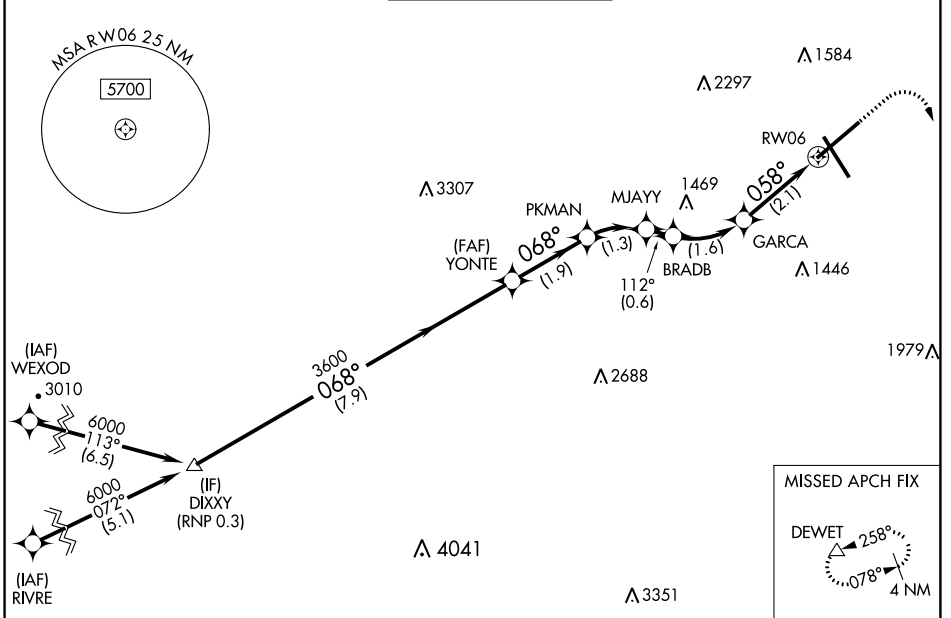
APP CRS	Rwy Idg	6800
058°	TDZE	1175
	Apt Elev	1175

RNAV (RNP) Z RWY 6

ROANOKE/BLACKSBURG RGNL (WOODRUM FLD) (R.O.A)

RNP AR APCH - GPS.	MALSRL	MISSED APPROACH: (Do not exceed 240K until DEWET) Climb to 1600 then climbing right turn to 5000 direct DEWET and hold, continue climb-in-hold to 5000. *Missed approach requires minimum climb of 370 feet per NM to 2900.
▼ For uncompensated Baro-VNAV systems, procedure NA below -14°C or above 54°C. ❄️ -13°C For inop ALS, increase RNP 0.20 all Cats visibility to ¾ SM.	AS	

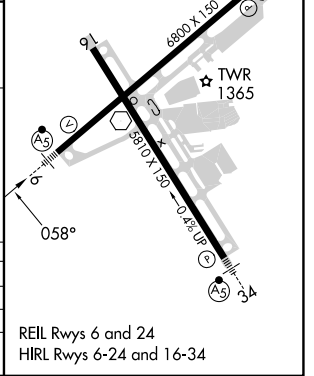
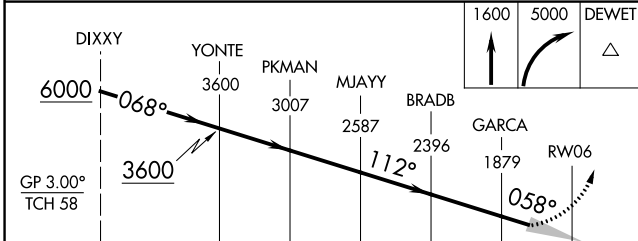
ATIS 132.375	ROANOKE APP CON 126.9 339.8	ROANOKE TOWER 118.3 257.8	GND CON 121.9 257.8	CLNC DEL 119.7
------------------------	---------------------------------------	-------------------------------------	-------------------------------	--------------------------



NE-3, 22 FEB 2024 to 21 MAR 2024

NE-3, 22 FEB 2024 to 21 MAR 2024

ELEV 1175	D TDZE 1175
-----------	--------------------



CATEGORY	A	B	C	D
RNP 0.20 DA*		1444-½	269 (300-½)	
RNP 0.30 DA		1605-¾	430 (500-¾)	

AUTHORIZATION REQUIRED

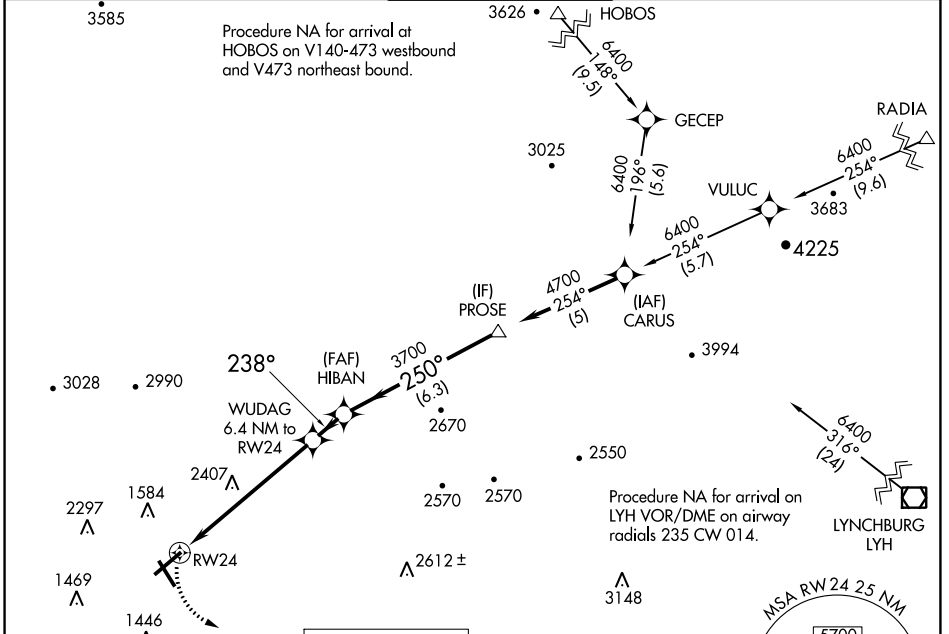
REIL Rwy's 6 and 24
HIRL Rwy's 6-24 and 16-34

WAAS CH 99522 W24A	APP CRS 238°	Rwy Idg TDZE Apt Elev	6010 1170 1175
--	------------------------	-----------------------------	---

RNAV (GPS) Y RWY 24

ROANOKE/BLACKSBURG RGNL (WOODRUM FLD) (R.O.A)

RNP APCH.		Circling NA northwest of Rwy 6-24. Rwy 24 helicopter visibility reduction below 3/4 SM NA.		MISSED APPROACH: Climbing left turn to 4000 direct MONAT and hold.	
ATIS 132.375	ROANOKE APP CON 126.9 339.8	ROANOKE TOWER 118.3 257.8	GND CON 121.9 257.8	CLNC DEL 119.7	



NE-3, 22 FEB 2024 to 21 MAR 2024

NE-3, 22 FEB 2024 to 21 MAR 2024

ELEV 1175	D	TDZE 1170	MISSED APCH FIX MONAT 4078° 258° 4 NM	
REIL Rwy 6 and 24	HIRL Rwy 6-24 and 16-34			
C CIRCLING		CATEGORY A 2500-1 1/4 1330 (1400-1 1/4)	B 2500-1 1/2 1330 (1400-1 1/2)	C 2500-3 1330 (1400-3)
LP MDA		3000-1 1/4 1830 (1900-1 1/4)	3000-1 1/2 1830 (1900-1 1/2)	3000-3 1830 (1900-3)
LNAV MDA		3000-1 1/4 1825 (1900-1 1/4)	3000-1 1/2 1825 (1900-1 1/2)	3000-3 1825 (1900-3)

RNAV (GPS) Y RWY 24

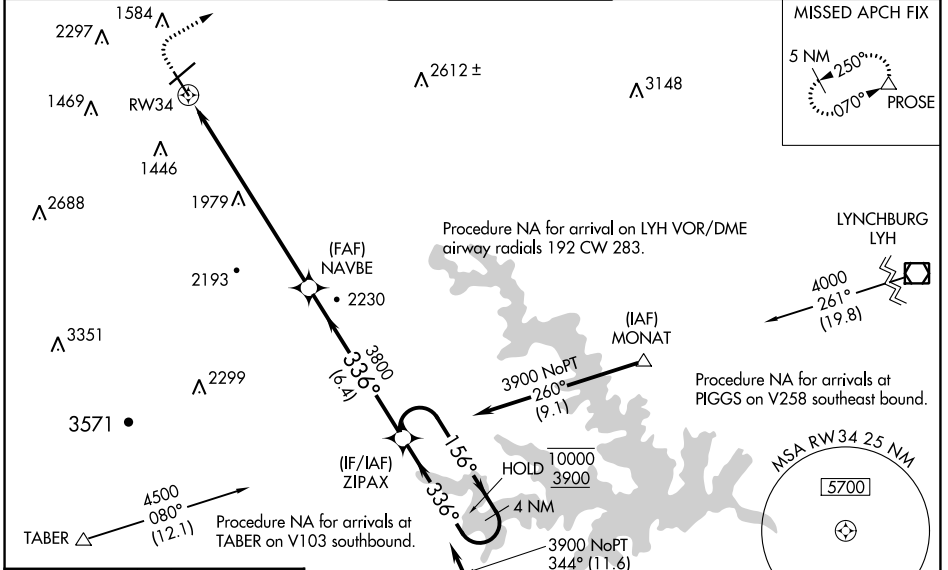
WAAS CH 70722 W34A	APP CRS 336°	Rwy Idg TDZE Apt Elev	5810 1160 1175
--	------------------------	-----------------------------	---

RNAV (GPS) Y RWY 34

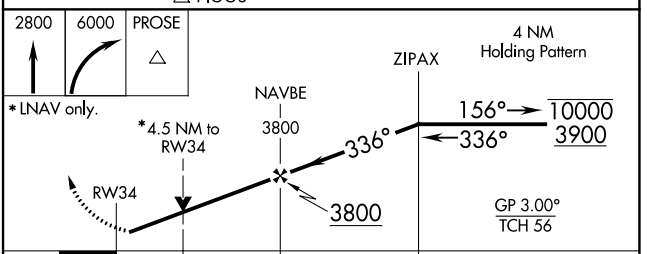
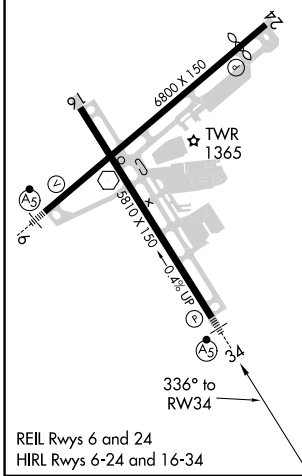
ROANOKE/BLACKSBURG RGNL (WOODRUM FLD) (R.O.A)

RNP APCH.	MALSRL	MISSED APPROACH: (Do not exceed 240K until PROSE) Climb to 2800 then climbing right turn to 6000 direct PROSE and hold, continue climb-in-hold to 6000. # Missed approach requires minimum climb of 405 feet per NM to 3900.
<p>Circling NA northwest of Rwy 6-24. Rwy 34 helicopter visibility reduction below 3/4 SM NA. For uncompensated Baro-VNAV systems, LNAV/VNAV NA below -14°C or above 54°C. Inop table does not apply to LPV, LNAV/VNAV or LNAV Cat C/D. For inop ALS, increase LPV# all Cats visibility to 1 1/2 SM.</p>		

ATIS 132.375	ROANOKE APP CON 126.9 339.8	ROANOKE TOWER 118.3 257.8	GND CON 121.9 257.8	CLNC DEL 119.7
------------------------	---------------------------------------	-------------------------------------	-------------------------------	--------------------------



ELEV 1175	D	TDZE 1160
-----------	----------	-----------



CATEGORY	A	B	C	D
LPV DA #		1560-3/4	400 (400-3/4)	
LPV DA		2568-5	1408 (1400-5)	
LNAV/VNAV DA		2300-4	1140 (1200-4)	
LNAV MDA	2640-3/4 1480 (1500-3/4)	2640-1 1480 (1500-1)	2640-3	1480 (1500-3)
C CIRCLING	2640-1 1/4 1465 (1500-1 1/4)	2640-1 1/2 1465 (1500-1 1/2)	2640-3 1465 (1500-3)	2820-3 1645 (1700-3)

NE-3, 22 FEB 2024 to 21 MAR 2024

NE-3, 22 FEB 2024 to 21 MAR 2024

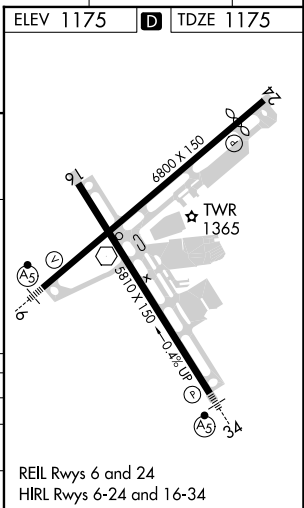
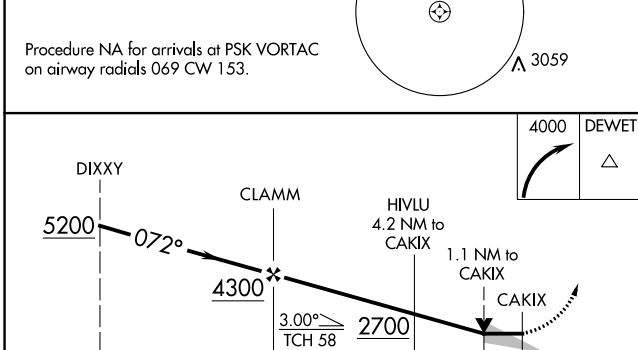
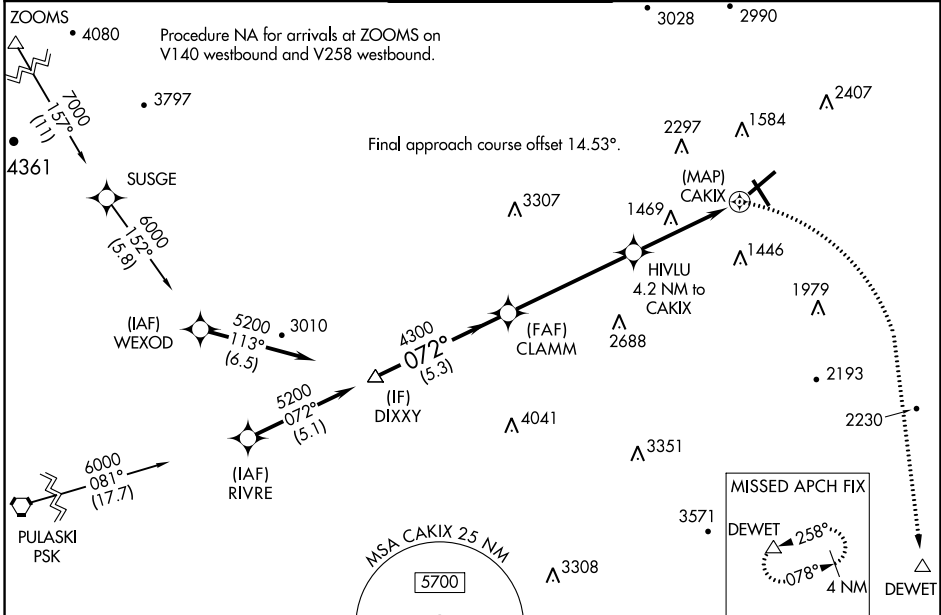
APP CRS	Rwy Idg	6800
072°	TDZE	1175
	Apt Elev	1175

RNAV (GPS) Y RWY 6

ROANOKE/BLACKSBURG RGNL (WOODRUM FLD) (R.O.A)

RNP APCH.	MALSR	MISSED APPROACH: Climbing right turn to 4000 direct DEWET and hold. ** Misted approach requires minimum climb of 276 feet per NM to 2700.
<p>Circling NA northwest of Rwy 6-24. For inop ALS, increase LNAV** Cat A and B visibility to 1 SM, LNAV Cat A visibility to 1 SM, and LNAV Cat C and D visibility to 1 1/2 SM.</p> <p>-13°C</p>		

ATIS 132.375	ROANOKE APP CON 126.9 339.8	ROANOKE TOWER 118.3 257.8	GND CON 121.9 257.8	CLNC DEL 119.7
------------------------	---------------------------------------	-------------------------------------	-------------------------------	--------------------------



CATEGORY	A	B	C	D
LNAV MDA**	1720-3/4	545 (600-3/4)	1720-1 1/8	545 (600-1 1/8)
LNAV MDA	1980-3/4	805 (900-3/4)	1980-1 7/8	805 (900-1 7/8)
C CIRCLING	1980-1 805 (900-1)	1980-1 1/4 805 (900-1 1/4)	2420-3 1245 (1300-3)	2820-3 1645 (1700-3)

NE-3, 22 FEB 2024 to 21 MAR 2024

NE-3, 22 FEB 2024 to 21 MAR 2024

VOR ODR 114.9	APP CRS 236°	Rwy ldg TDZE Apt Elev N/A 1175
-------------------------	------------------------	---

VOR/DME-A

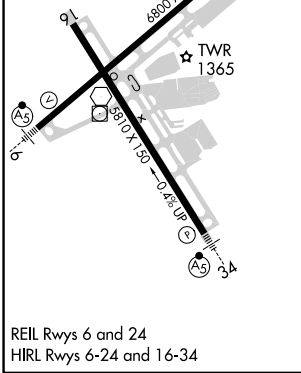
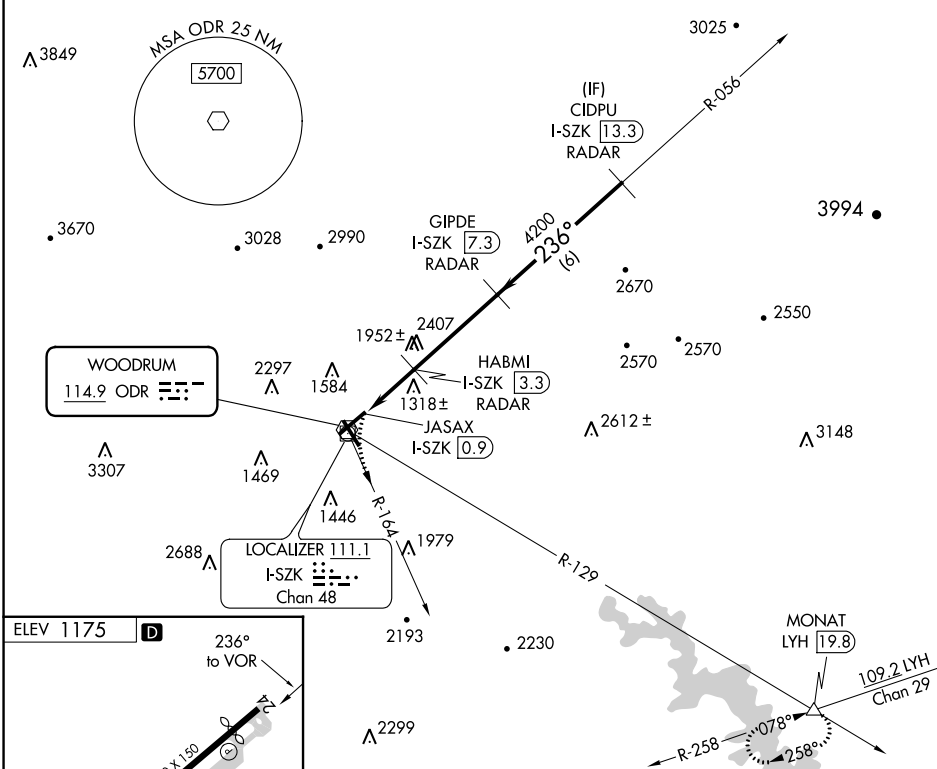
ROANOKE/BLACKSBURG RGNL (WOODRUM FLD) (R.O.A)

RADAR required.

⚠ Circling NA northwest of Rwy 6-24. DME from I-SZK LDA.
⚠ Simultaneous reception of ODR VOR and I-SZK DME required.
⚠ -13°C

MISSED APPROACH: Climbing left turn to 4000 on ODR VOR R-164 and LYH VOR/DME R-258 to MONAT/LYH 19.8 DME and hold.

ATIS 132.375	ROANOKE APP CON 126.9 339.8	ROANOKE TOWER 118.3 257.8	GND CON 121.9 257.8	CLNC DEL 119.7
------------------------	---------------------------------------	-------------------------------------	-------------------------------	--------------------------



4000 ODR R-164	LYH R-258	MONAT	GIPDE I-SZK 7.3 RADAR	CIDPU I-SZK 13.3 RADAR	
JASAX I-SZK 0.9	HABMI I-SZK 3.3 RADAR	4200	4200	4200	
CATEGORY		A	B	C	D
C CIRCLING		1740-1	565 (600-1)	2420-3 1245 (1300-3)	2800-3 1625 (1700-3)

NE-3, 22 FEB 2024 to 21 MAR 2024

NE-3, 22 FEB 2024 to 21 MAR 2024

VOR/DME-A