

(BELVU4.BELVU) 23334

# BELLEVUE FOUR DEPARTURE

AL-5396 (FAA)

RENTON MUNI (RNT)  
RENTON, WASHINGTON

ATIS  
126.95  
GND CON  
121.6 256.9  
RENTON TOWER \*  
124.7 256.9  
SEATTLE DEP CON  
125.9 306.9

**TOP ALTITUDE:  
3000**



Paine  
110.6 PAE : - · ·  
Chan 43

NOTE: RADAR required.

### TAKEOFF MINIMUMS

Rwy 16: NA- ATC.

Rwy 34: Standard with minimum climb of 330' per NM to 2700.

NOTE: Chart not to scale.



### DEPARTURE ROUTE DESCRIPTION

TAKEOFF RUNWAY 34: Climb heading 350°, maintain 3000, for RADAR vectors, expect filed altitude within 5 minutes after departure.

LOST COMMUNICATIONS: If no contact with Seattle Departure Control within 3 minutes after departure, climbing left turn direct PAE VOR/DME, continue climb-in PAE VOR/DME holding pattern to cross PAE VOR/DME at or above MEA/MCA for direction of flight.

# BELLEVUE FOUR DEPARTURE

(BELVU4.BELVU) 13SEP18

RENTON, WASHINGTON  
RENTON MUNI (RNT)

NW-1, 22 FEB 2024 to 21 MAR 2024

NW-1, 22 FEB 2024 to 21 MAR 2024

(RENTN3.RENTN) 23334

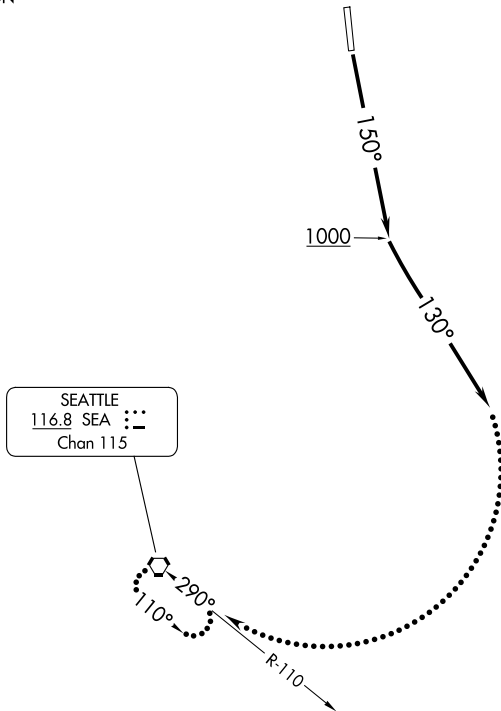
# RENTN THREE DEPARTURE

AL-5396 (FAA)

RENTON MUNI (RNT)  
RENTON, WASHINGTON

ATIS  
126.95  
GND CON  
121.6 256.9  
RENTON TOWER \*  
124.7 (CTAF) 256.9  
SEATTLE DEP CON  
123.9 338.2

**TOP ALTITUDE:  
3000**



NOTE: RADAR required.

### TAKEOFF MINIMUMS

Rwy 16: Standard with a minimum climb of 405' per NM to 800.

Rwy 34: NA- ATC.

NOTE: Chart not to scale.



### DEPARTURE ROUTE DESCRIPTION

TAKEOFF RUNWAY 16: Climb heading 150° to 1000, then climbing left turn heading 130°, expect RADAR vectors, maintain 3000, expect filed altitude within 5 minutes after departure.

LOST COMMUNICATIONS: If no contact with Seattle Departure Control within 3 minutes after departure, climbing right turn direct SEA VORTAC, continue climb-in SEA VORTAC holding pattern to cross SEA VORTAC at or above MEA/MCA for direction of flight before proceeding on course.

# RENTN THREE DEPARTURE

(RENTN3.RENTN) 21JUL16

RENTON, WASHINGTON  
RENTON MUNI (RNT)

NW-1, 22 FEB 2024 to 21 MAR 2024

NW-1, 22 FEB 2024 to 21 MAR 2024