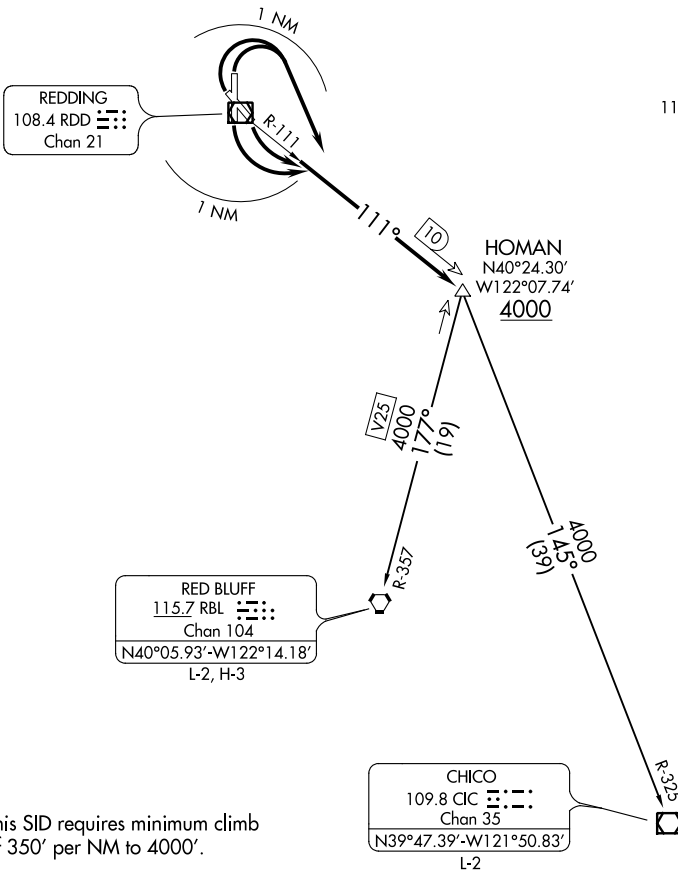


ATIS
124.1
GND CON
121.7
REDDING TOWER*
119.8 (CTAF) 269.25
OAKLAND CENTER
132.2 350.3



NOTE: This SID requires minimum climb of 350' per NM to 4000'.

NOTE: Chart not to scale.

DEPARTURE ROUTE DESCRIPTION

TAKEOFF RUNWAYS 12, 16: Turn left within 1 NM, thence. . .

TAKEOFF RUNWAYS 30, 34: Turn right within 1 NM, thence. . .

. . . Intercept the RDD R-111, direct HOMAN INT, cross HOMAN INT at or above 4000'; then via (transition) or (assigned route). Expect clearance to filed altitude 10 minutes after departure.

CHICO TRANSITION (HOMAN2.CIC): From over HOMAN INT on CIC R-325 to CIC VOR/DME.

RED BLUFF TRANSITION (HOMAN2.RBL): From over HOMAN INT on RBL R-357 to RBL VORTAC.

SW-2: 07 NOV 2019 to 05 DEC 2019

SW-2: 07 NOV 2019 to 05 DEC 2019

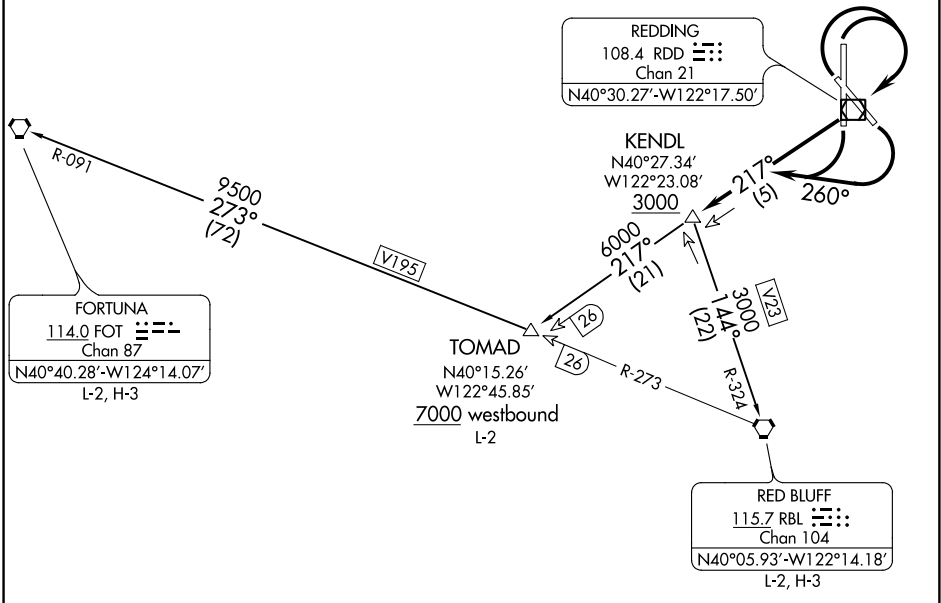
KENDL THREE DEPARTURE

AL-688 (FAA)

REDDING MUNI (R.DD)
REDDING, CALIFORNIA

ATIS
124.1
REDDING TOWER*
119.8 269.25
OAKLAND CENTER
132.2 350.3

**TOP ALTITUDE:
ASSIGNED BY ATC**



SW-2: 07 NOV 2019 to 05 DEC 2019

SW-2: 07 NOV 2019 to 05 DEC 2019

TAKEOFF MINIMUMS

- Rwys 12, 34 : Standard with minimum climb of 410' per NM to 3000.
- Rwy 16: Standard with minimum climb of 495' per NM to 3000.
- Rwy 30: Standard with minimum climb of 440' per NM to 3000.

NOTE: Chart not to scale.

DEPARTURE ROUTE DESCRIPTION

TAKEOFF RUNWAYS 12 and 16: Climbing right turn heading 260° to intercept RDD R-217 to KENDL, cross KENDL at or above 3000, thence . . .

TAKEOFF RUNWAYS 30 and 34: Climbing right turn direct RDD VOR/DME then on RDD R-217 to KENDL, cross KENDL at or above 3000, thence . . .

. . . via (transition) or (assigned route).

- FORTUNA TRANSITION (KENDL3.FOT): From over KENDL on RDD R-217 to TOMAD, thence on RBL R-273 and FOT R-091 to FOT VORTAC.
- RED BLUFF TRANSITION (KENDL3.RBL): From over KENDL on RBL R-324 to RBL VORTAC.
- TOMAD TRANSITION (KENDL3.TOMAD): From over KENDL on RDD R-217 to TOMAD.

KENDL THREE DEPARTURE

KREST THREE DEPARTURE

AL-688 (FAA)

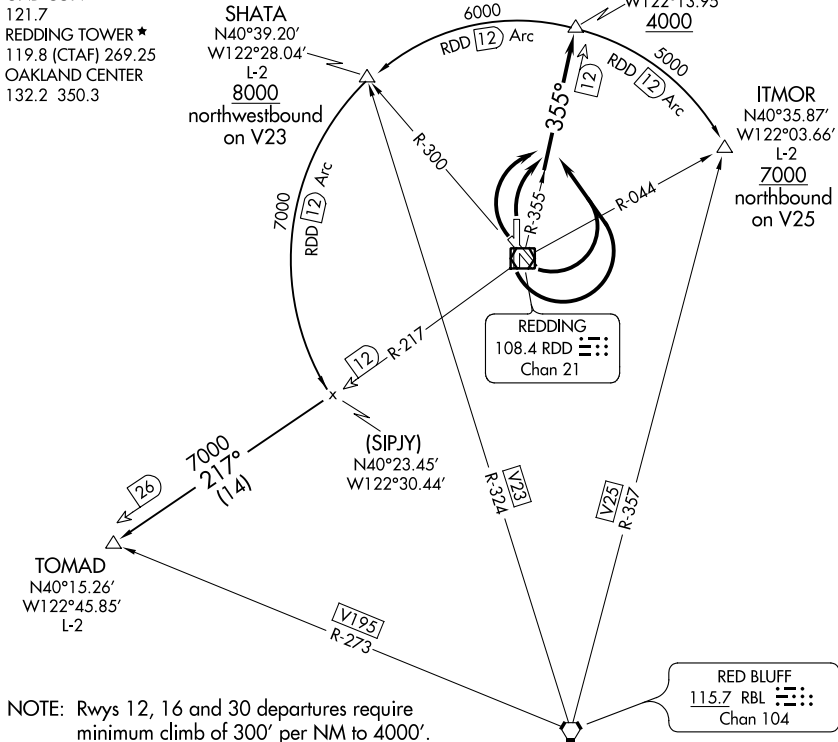
REDDING MUNI (R.DD)
REDDING, CALIFORNIA

ATIS
124.1
GND CON
121.7
REDDING TOWER ★
119.8 (CTAF) 269.25
OAKLAND CENTER
132.2 350.3

SHATA
N40°39.20'
W122°28.04'
L-2
8000
northwestbound
on V23

KREST
N40°41.97'
W122°13.95'
4000

ITMOR
N40°35.87'
W122°03.66'
L-2
7000
northbound
on V25



- NOTE: Rwy 12, 16 and 30 departures require minimum climb of 300' per NM to 4000'.
- NOTE: Rwy 34 departure requires minimum climb of 320' per NM to 4000'.
- NOTE: DME required.

NOTE: Chart not to scale.

SW-2: 07 NOV 2019 to 05 DEC 2019

SW-2: 07 NOV 2019 to 05 DEC 2019

DEPARTURE ROUTE DESCRIPTION

TAKEOFF RUNWAYS 12 and 16: Turn left immediately after departure to intercept and proceed on the RDD R-355 to KREST DME Fix. Cross KREST DME Fix at or above 4000', thence on (transition) or (assigned route).

TAKEOFF RUNWAYS 30 and 34: Turn right immediately after departure to intercept and proceed on RDD R-355 to KREST DME Fix. Cross KREST DME Fix at or above 4000', thence on (transition) or (assigned route).

ITMOR TRANSITION (KREST3.ITMOR): From over KREST DME Fix on RDD 12 DME Arc clockwise to ITMOR INT.

SHATA TRANSITION (KREST3.SHATA): From over KREST DME Fix on RDD 12 DME Arc counterclockwise to SHATA INT.

TOMAD TRANSITION (KREST3.TOMAD): From over KREST DME Fix on RDD 12 DME Arc counterclockwise to RDD R-217, thence on RDD R-217 to TOMAD INT.

KREST THREE DEPARTURE

(KREST3.KREST) 30MAR95

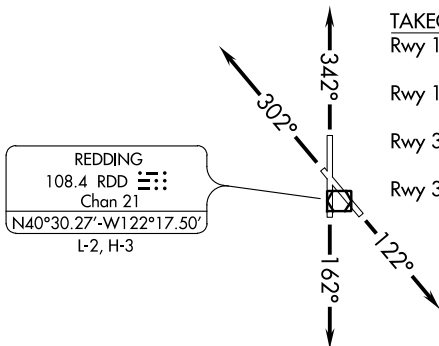
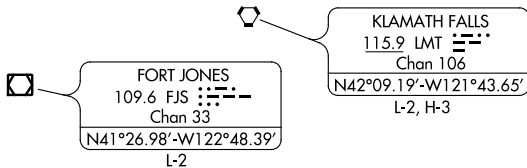
REDDING, CALIFORNIA
REDDING MUNI (R.DD)

SHASTA THREE DEPARTURE

AL-688 (FAA)

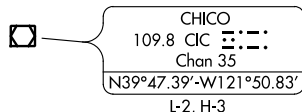
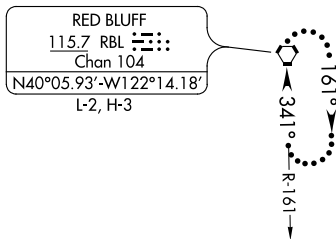
REDDING MUNI (R.DD)
REDDING, CALIFORNIA

ATIS
124.1
GND CON
121.7
REDDING TOWER *
119.8 (CTAF) 269.25
OAKLAND CENTER
132.2 350.3



TAKEOFF MINIMUMS

- Rwy 12: Standard with a minimum climb of 375' per NM to 13900.
- Rwy 16: Standard with a minimum climb of 370' per NM to 13900.
- Rwy 30: Standard with a minimum climb of 460' per NM to 8400.
- Rwy 34: Standard with a minimum climb of 452' per NM to 8200.



DEPARTURE ROUTE DESCRIPTION

TAKEOFF RUNWAY 12: Climb heading 122° (or ATC assigned 340° CW 230°), thence . . .

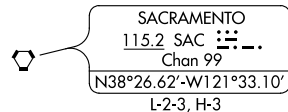
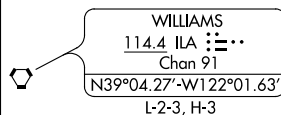
TAKEOFF RUNWAY 16: Climb heading 162° (or ATC assigned 350° CW 230°), thence . . .

TAKEOFF RUNWAY 30: Climb heading 302° (or ATC assigned 130° CW 360°), thence . . .

TAKEOFF RUNWAY 34: Climb heading 342° (or ATC assigned 170° CW 360°), thence . . .

. . . expect vectors to join assigned route. Maintain assigned altitude; expect filed altitude/flight level ten minutes after departure.

LOST COMMUNICATIONS: If no contact with Oakland Center after reaching 4000 proceed to RBL VORTAC and hold.



NOTE: RADAR required.

NOTE: Chart not to scale.

SHASTA THREE DEPARTURE