

WAAS CH 42701 W17A	APP CRS 173°	Rwy ldg 6014 TDZE 1351 Apt Elev 1354
--	------------------------	---

RNAV (GPS) RWY 17R

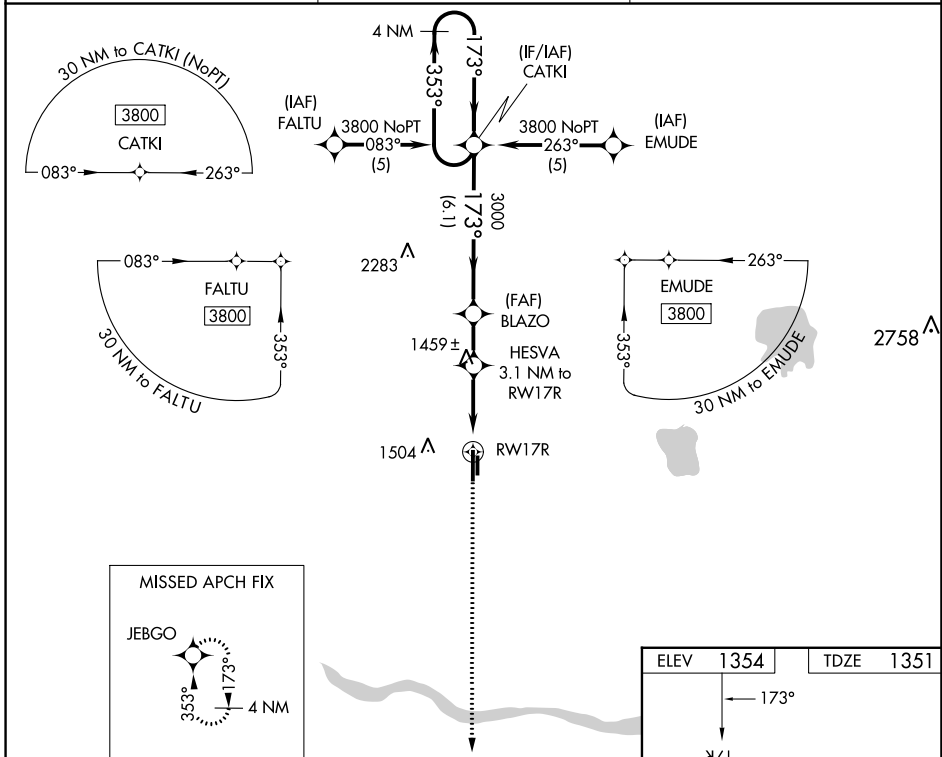
CLARENCE E PAGE MUNI (R/C/E)

▼ DME/DME RNP-0.3 NA. When local altimeter setting not received, use Wiley Post altimeter setting and increase all DA 29 feet and all MDA 40 feet and increase LPV all Cats visibility ¼ mile. VDP NA when using Wiley Post altimeter setting.

▲

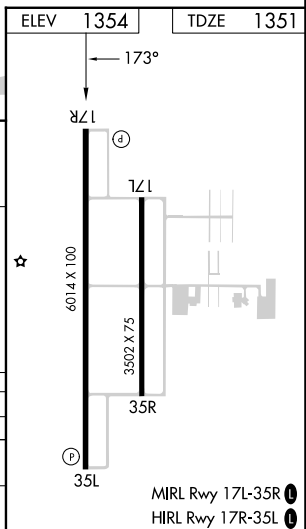
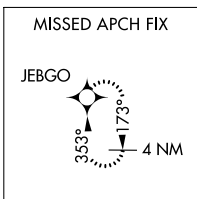
MISSED APPROACH: Climb to 3800 direct JEBGO and hold.

AWOS-3 125.05	OKE CITY APP CON 124.6 266.8	UNICOM 123.0 (CTAF)
-------------------------	--	-------------------------------



SC-1, 22 FEB 2024 to 21 MAR 2024

SC-1, 22 FEB 2024 to 21 MAR 2024



4 NM Holding Pattern

VGSI and RNAV glidepath not coincident. (VGSI Angle 3.00/TCH 52).

3800	← 353°	→ 173°	→ 173°	→ 173°	→ 173°
GP 3.00° TCH 52					
	← 6.1 NM	← 1.9 NM	← 2 NM	← 1.1 NM	

CATEGORY	A	B	C	D
LPV DA		1601-¾ 250 (300-¾)		NA
LNAV MDA	1760-1	409 (500-1)	1760-1¼ 409 (500-1¼)	NA
CIRCLING	1800-1 446 (500-1)	1820-1 466 (500-1)	1840-1½ 486 (500-1½)	NA

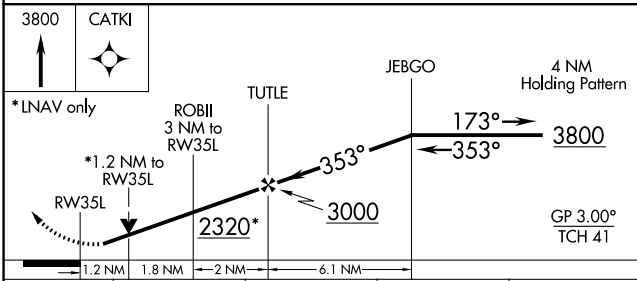
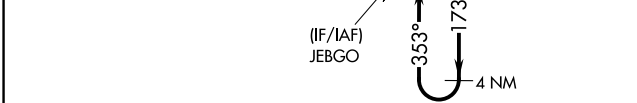
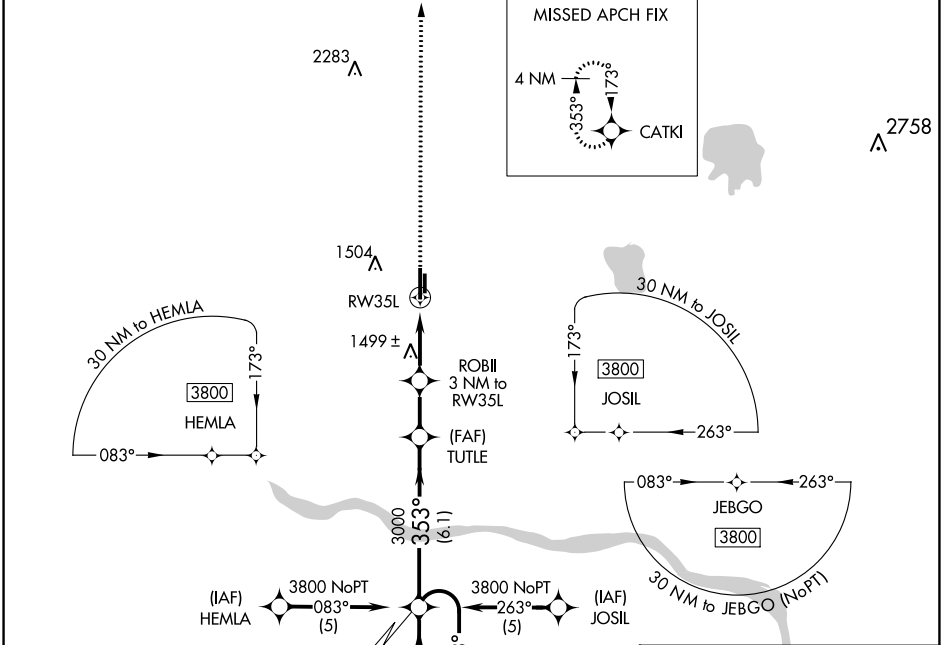
WAAS CH 86901 W35A	APP CRS 353°	Rwy ldg 6014 TDZE 1350 Apt Elev 1354
--	------------------------	---

RNAV (GPS) RWY 35L

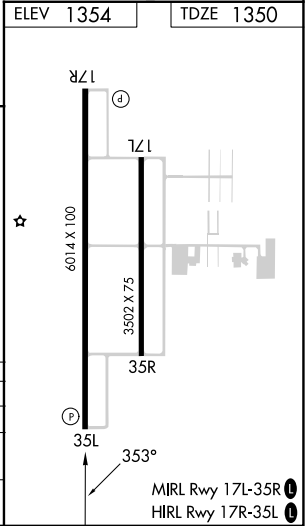
CLARENCE E PAGE MUNI (R/C/E)

<p>▼ DME/DME RNP-0.3 NA. Visibility reduction by helicopters NA. When local altimeter setting not received, use Wiley Post altimeter setting and increase all DA 29 feet and all MDA 40 feet and increase LPV all Cats visibility 1/4 mile.</p> <p>▲ VDP NA when using Wiley Post altimeter setting.</p>	MISSED APPROACH: Climb to 3800 direct CATKI and hold.
--	---

AWOS-3 125.05	OKE CITY APP CON 124.6 266.8	UNICOM 123.0 (CTAF) 0
-------------------------	--	---------------------------------



CATEGORY	A	B	C	D
LPV DA	1651-1	301 (300-1)		NA
RNAV MDA	1760-1	410 (500-1)	1760-1 1/4 (500-1 1/4)	NA
CIRCLING	1800-1 (446 (500-1))	1820-1 (466 (500-1))	1840-1 1/2 (486 (500-1 1/2))	NA



SC-1, 22 FEB 2024 to 21 MAR 2024

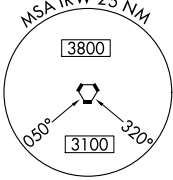
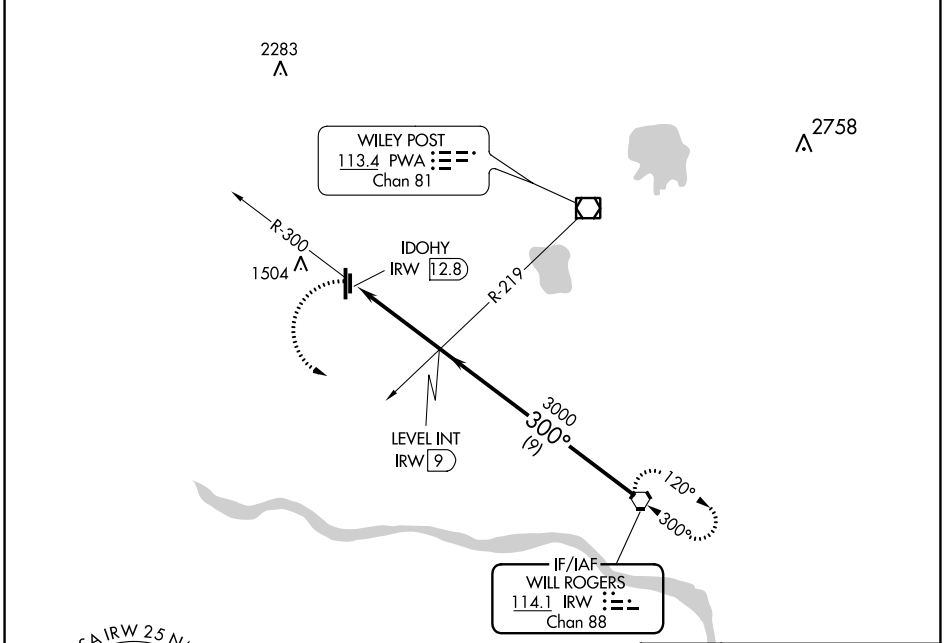
SC-1, 22 FEB 2024 to 21 MAR 2024

VORTAC IRW 114.1 Chan 88	APP CRS 300°	Rwy Idg TDZE Apt Elev N/A N/A 1354
--	------------------------	--

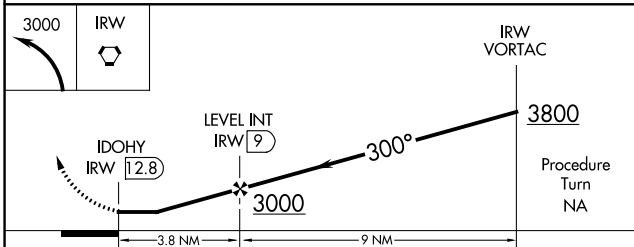
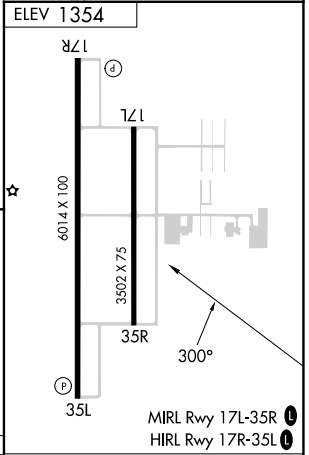
VOR-B
CLARENCE E PAGE MUNI (R/C/E)

⚠ When local altimeter setting not received, use Wiley Post altimeter setting and increase all MDA 40 feet. **MISSED APPROACH:** Climbing left turn to 3000 direct IRW VORTAC and hold.

AWOS-3 125.05	OKE CITY APP CON 124.6 266.8	UNICOM 123.0 (CTAF) ①
-------------------------	--	---------------------------------



Procedure NA for arrival at IRW VORTAC on airway radials 241 CW 292.



CATEGORY	A	B	C	D	FAF to MAP 3.8 NM					
CIRCLING	1860-1	506 (600-1)	1860-1½ 506 (600-1½)	NA	Knots	60	90	120	150	180
					Min:Sec	3:48	2:32	1:54	1:31	1:16

SC-1, 22 FEB 2024 to 21 MAR 2024

SC-1, 22 FEB 2024 to 21 MAR 2024