

CENTRE, ALABAMA

AL-10343 (FAA)

22195

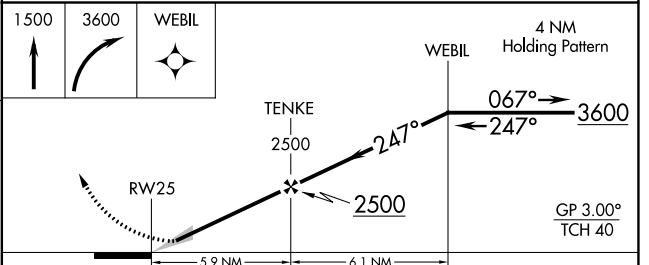
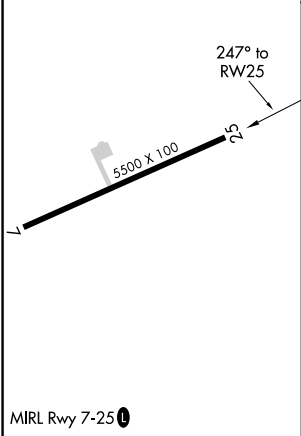
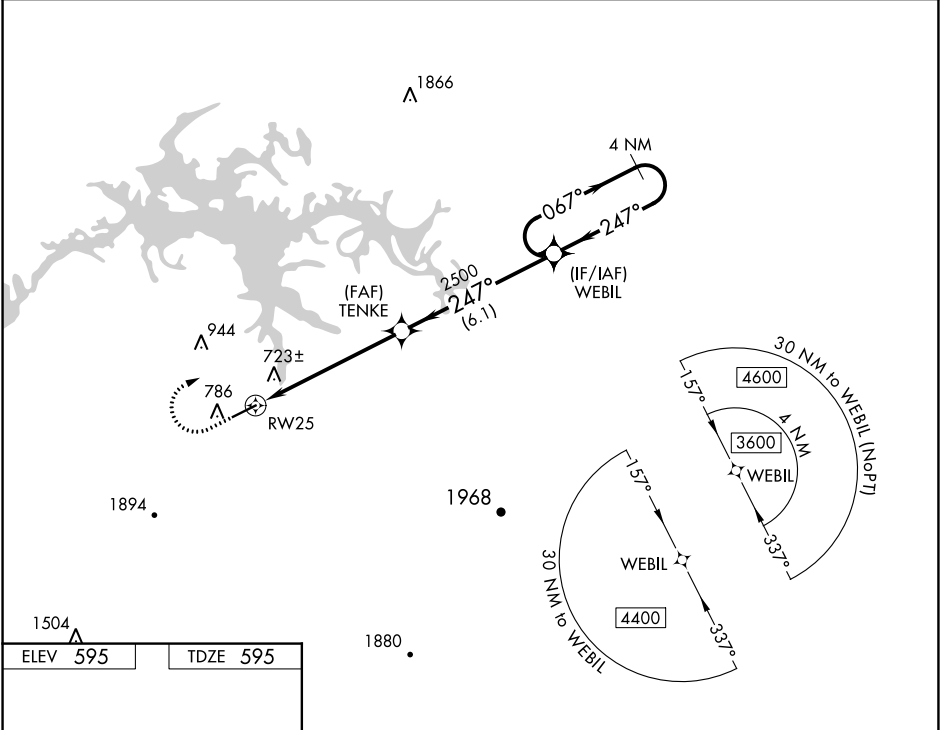
WAAS CH 72727 W25A	APP CRS 247°	Rwy Idg TDZE Apt Elev	5500 595 595
--	------------------------	-----------------------------	---

RNAV (GPS) RWY 25

CENTRE-PIEDMONT CHEROKEE COUNTY RGNL (PYP)

<p>NA Baro-VNAV NA. DME/DME RNP-0.3 NA. Use Gadsden altimeter setting, when not received, use Anniston altimeter setting and increase all DA/MDA 20 feet.</p>	<p>MISSED APPROACH: Climb to 1500 then climbing right turn to 3600 direct WEBIL and hold.</p>
--	--

GAD AWOS-3PT 127.825	ATLANTA CENTER 124.5 270.325	CTAF 122.9
--------------------------------	--	----------------------



CATEGORY	A	B	C	D
LPV DA	856-7/8		261 (300-7/8)	
LNAV/VNAV DA	1064-1 5/8		469 (500-1 5/8)	
LNAV MDA	1180-1 585 (600-1)		1180-1 3/4 585 (600-1 3/4)	
CIRCLING	1180-1 585 (600-1)		1360-2 1/4 765 (800-2 1/4)	2260-3 1665 (1700-3)

CENTRE, ALABAMA
Amdt 1B 14JUL22

CENTRE-PIEDMONT CHEROKEE COUNTY RGNL (PYP)
34°05'N-85°37'W
RNAV (GPS) RWY 25

SE-4, 22 FEB 2024 to 21 MAR 2024

SE-4, 22 FEB 2024 to 21 MAR 2024

WAAS CH 48927 W07A	APP CRS 067°	Rwy ldg 5500 TDZE 585 Apt Elev 595
--	------------------------	---

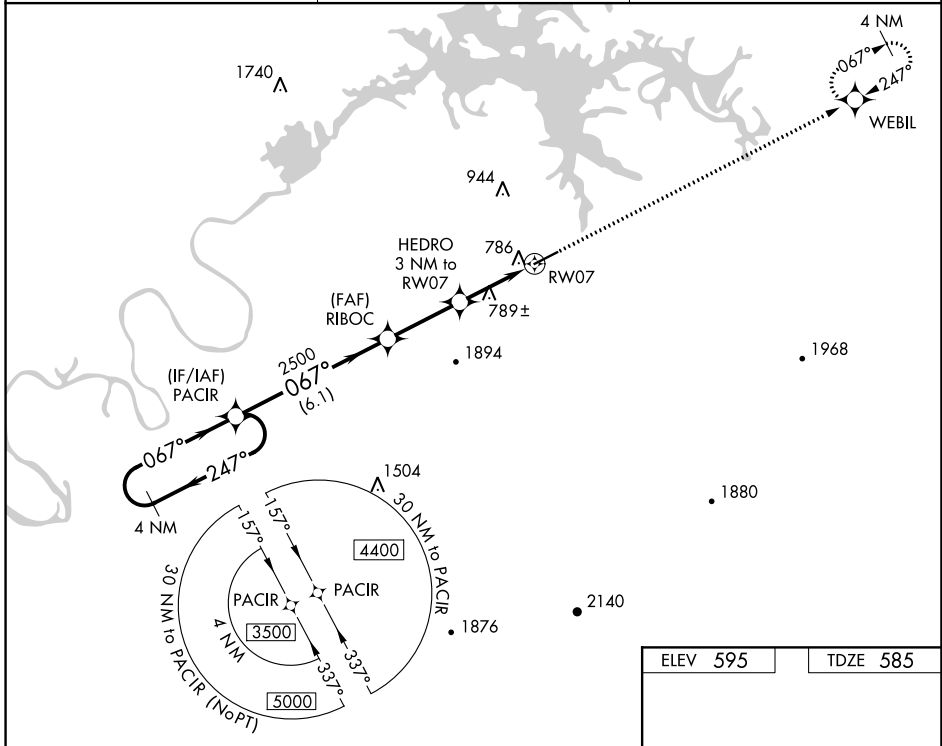
RNAV (GPS) RWY 7

CENTRE-PIEDMONT CHEROKEE COUNTY RGNL (PYP)

NA Baro-VNAV NA, DME/DME RNP-0.3 NA. Helicopter visibility reduction below $\frac{3}{4}$ SM NA. Use Gadsden altimeter setting; when not received use Anniston altimeter setting and increase all DA/MDA 20 feet; increase LPV all Cats and LNAV Cats C/D visibility $\frac{1}{8}$ mile.

MISSED APPROACH: Climb to 3600 direct WEBIL and hold.

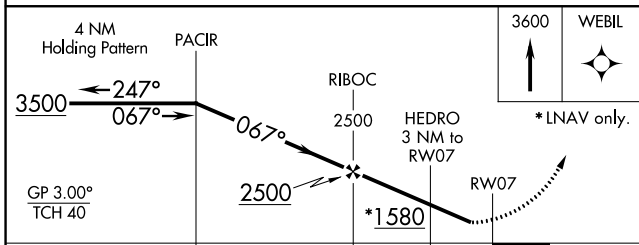
GAD AWOS-3PT 127.825	ATLANTA CENTER 124.5 270.325	CTAF 122.90
--------------------------------	--	-----------------------



SE-4, 22 FEB 2024 to 21 MAR 2024

SE-4, 22 FEB 2024 to 21 MAR 2024

ELEV 595	TDZE 585
----------	----------



CATEGORY	A	B	C	D
LPV DA		896-1	311 (400-1)	
LNAV/VNAV DA		1009-1½	424 (500-1½)	
LNAV MDA	1100-1	515 (600-1)	1100-1⅜	515 (600-1⅜)
CIRCLING	1180-1	585 (600-1)	1360-2¼ 765 (800-2¼)	2260-3 1665 (1700-3)

MIRL Rwy 7-25