

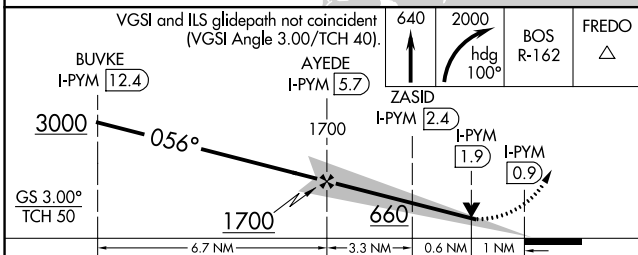
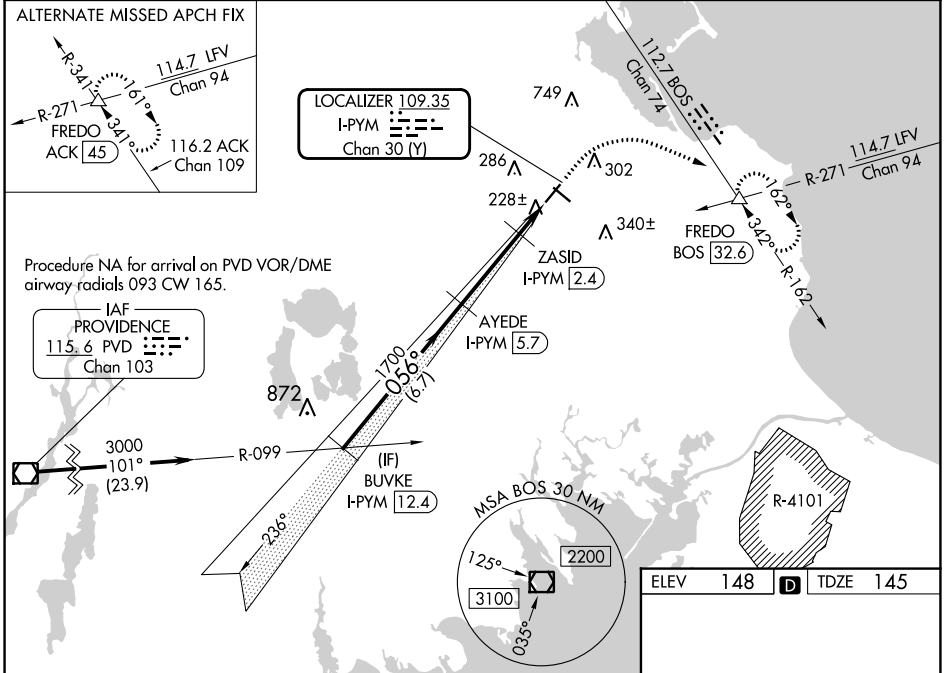
LOC/DME I-PYM 109.35 Chan 30 (Y)	APP CRS 056°	Rwy ldg TDZE Apt Elev	4650 145 148
---	------------------------	-----------------------------	---

ILS or LOC RWY 6

PLYMOUTH MUNI (PYM)

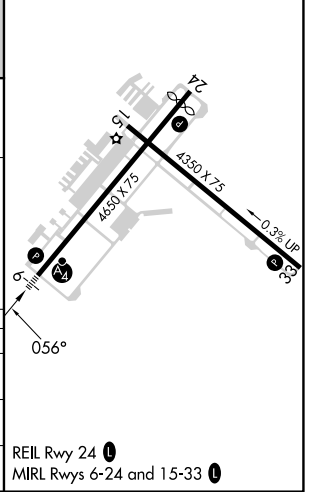
RNP APCH - GPS. From PVD VOR/DME. DME required for LOC only. Aircraft not GPS equipped - RADAR required for procedure entry.	MALSF 	MISSED APPROACH: Climb to 640 then climbing right turn to 2000 on heading 100° and on BOS VOR/DME R-162 to FREDO INT/BOS 32.6 DME and hold.
⚠ Circling Rwy 15, 24 NA at night. ⚠ Rwy 6 helicopter visibility reduction below 3/4 SM NA. For inop ALS, increase S-ILS 6 visibility all Cats to 1/2 SM.		

ASOS 135.625	BOSTON APP CON ★ 118.2 284.6	CLNC DEL 127.75	UNICOM 122.725 (CTAF)	122.9
------------------------	--	---------------------------	---------------------------------	--------------



CATEGORY	A	B	C	D
S-ILS 6	436-3/4	291 (300-3/4)		NA
S-LOC 6	480-3/4	335 (400-3/4)		NA
CIRCLING	620-1 472 (500-1)	640-1 492 (500-1)	760-1 3/4 612 (700-1 3/4)	NA

ELEV 148		TDZE 145
----------	--	----------



NE-1, 22 FEB 2024 to 21 MAR 2024

NE-1, 22 FEB 2024 to 21 MAR 2024

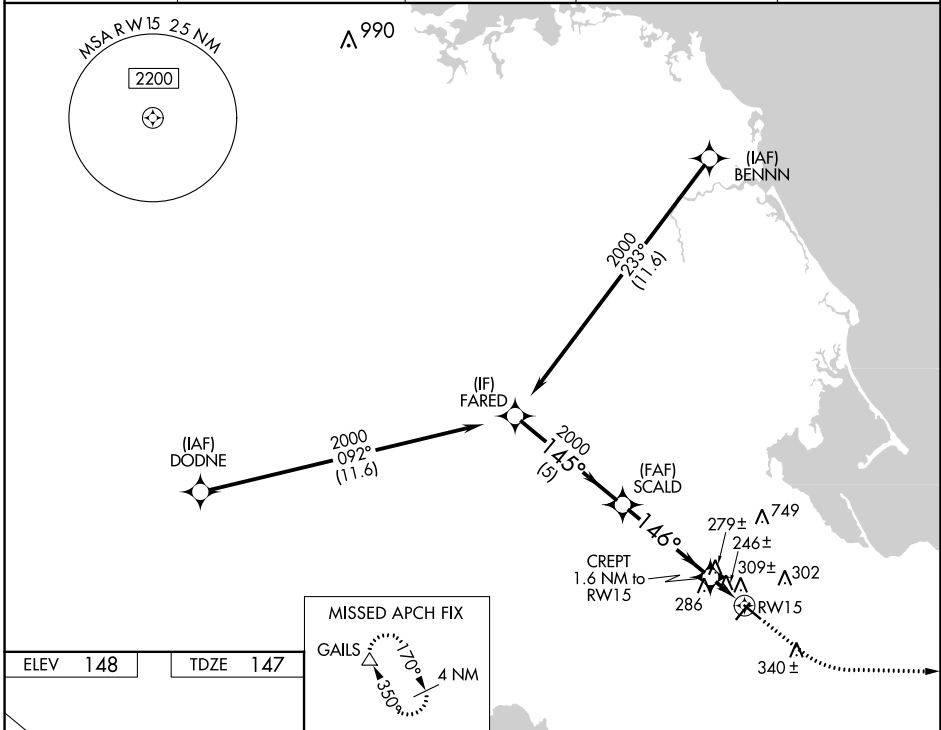
WAAS CH 93639	APP CRS 146°	Rwy Idg TDZE 147	4350
W15A		Apt Elev	148

RNAV (GPS) RWY 15

PLYMOUTH MUNI (PYM)

RNP APCH - GPS.	MISSED APPROACH: Climb to 600 then climbing left turn to 2000 direct GAILS and hold.
<p>▼ Rwy 15 helicopter visibility reduction below 1 SM NA.</p> <p>▲ Straight-in Rwy 15 NA at night, Circling Rwy 15, 24 NA at night.</p>	

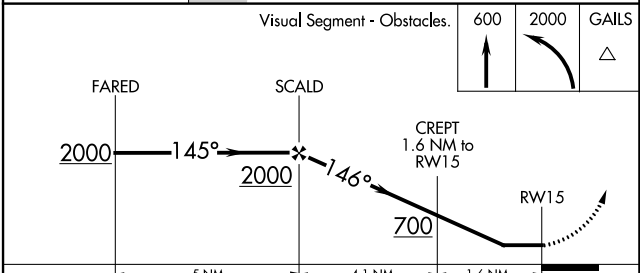
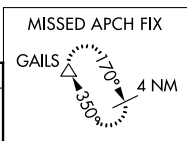
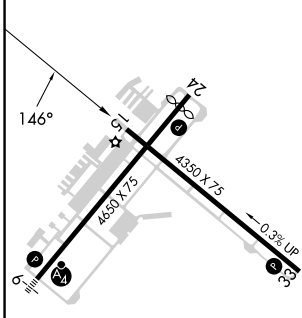
ASOS 135.625	BOSTON APP CON ★ 118.2 284.6	CLNC DEL 127.75	UNICOM 122.725 (CTAF)	122.9
------------------------	--	---------------------------	---------------------------------	--------------



NE-1, 22 FEB 2024 to 21 MAR 2024

NE-1, 22 FEB 2024 to 21 MAR 2024

ELEV 148	TDZE 147
-----------------	-----------------



	5 NM		4.1 NM		1.6 NM		
CATEGORY	A	B	C	D			
LP MDA	500-1 353 (400-1)			NA			
LNAV MDA	560-1	413 (500-1)	560-1 1/8 413 (500-1 1/8)		NA		
CIRCLING	620-1 472 (500-1)	640-1 492 (500-1)	760-1 3/4 612 (700-1 3/4)		NA		

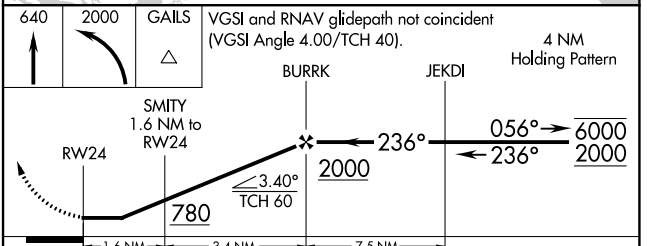
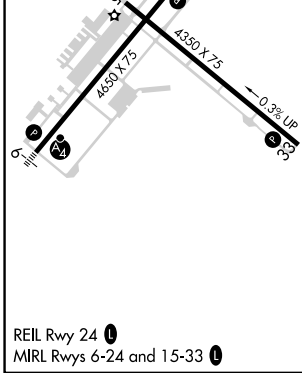
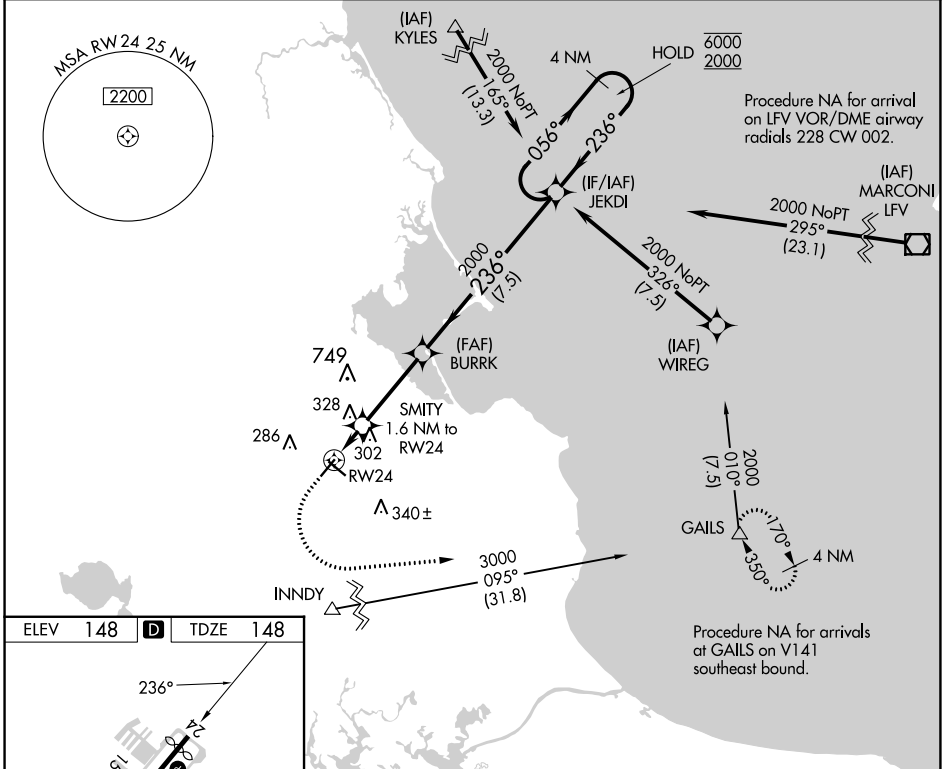
APP CRS 236°	Rwy Idg 4350
	TDZE 148
	Apt Elev 148

RNAV (GPS) RWY 24

PLYMOUTH MUNI (PYM)

RNP APCH - GPS.	MISSED APPROACH: Climb to 640 then climbing left turn to 2000 direct GAILS and hold.
<p>▼ Rwy 24 helicopter visibility reduction below 1 SM NA.</p> <p>▲ Straight-in Rwy 24 NA at night.</p> <p>○ Circling Rwy 15, 24 NA at night.</p>	

ASOS 135.625	BOSTON APP CON * 118.2 284.6	CLNC DEL 127.75	UNICOM 122.725 (CTAF)	122.9
------------------------	--	---------------------------	---------------------------------	--------------



CATEGORY	A	B	C	D
LNVA MDA	580-1	432 (500-1)	580-1¼ 432 (500-1¼)	NA
CIRCLING	620-1 472 (500-1)	640-1 492 (500-1)	760-1¾ 612 (700-1¾)	NA

NE-1, 22 FEB 2024 to 21 MAR 2024

NE-1, 22 FEB 2024 to 21 MAR 2024

WAAS CH 63241 W33A	APP CRS 326°	Rwy Idg 4350 TDZE 142 Apt Elev 148
--	------------------------	---

RNAV (GPS) RWY 33

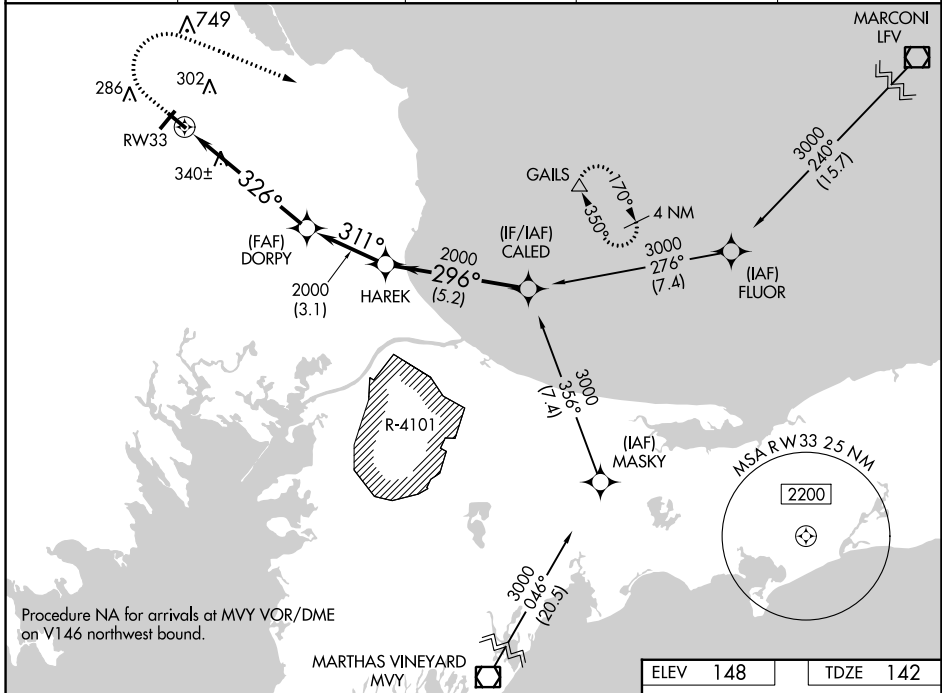
PLYMOUTH MUNI (PYM)

RNP APCH - GPS.

⚠ Circling Rwy 15, 24 NA at night. Rwy 33 helicopter visibility reduction below 3/4 SM NA.
⚠ For uncompensated Baro-VNAV systems, LNAV/VNAV NA below -18°C or above 54°C.

MISSED APPROACH: Climb to 700 then climbing right turn to 3000 direct GAILS and hold.

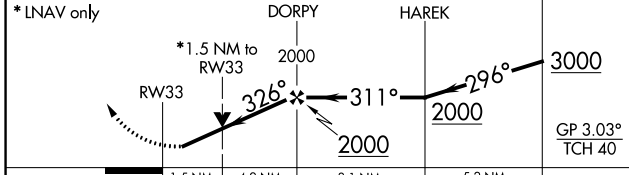
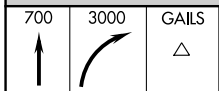
ASOS 135.625	BOSTON APP CON * 118.2 284.6	CLINC DEL 127.75	UNICOM 122.725 (CTAF)	122.9 0
------------------------	--	----------------------------	---------------------------------	----------------



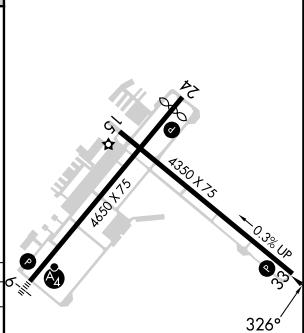
Procedure NA for arrivals at MVY VOR/DME on V146 northwest bound.

NE-1, 22 FEB 2024 to 21 MAR 2024

NE-1, 22 FEB 2024 to 21 MAR 2024



ELEV 148	TDZE 142
----------	----------



CATEGORY	A	B	C	D
LPV DA	393-3/4	251 (300-3/4)		NA
LNAV/VNAV DA	486-1	344 (400-1)		NA
LNAV MDA	660-1	518 (600-1)	660-1 3/8 518 (600-1 3/8)	NA
C CIRCLING	660-1	512 (600-1)	760-1 3/4 612 (700-1 3/4)	NA

REIL Rwy 24 **0**
 MIRL Rwy 6-24 and 15-33 **0**

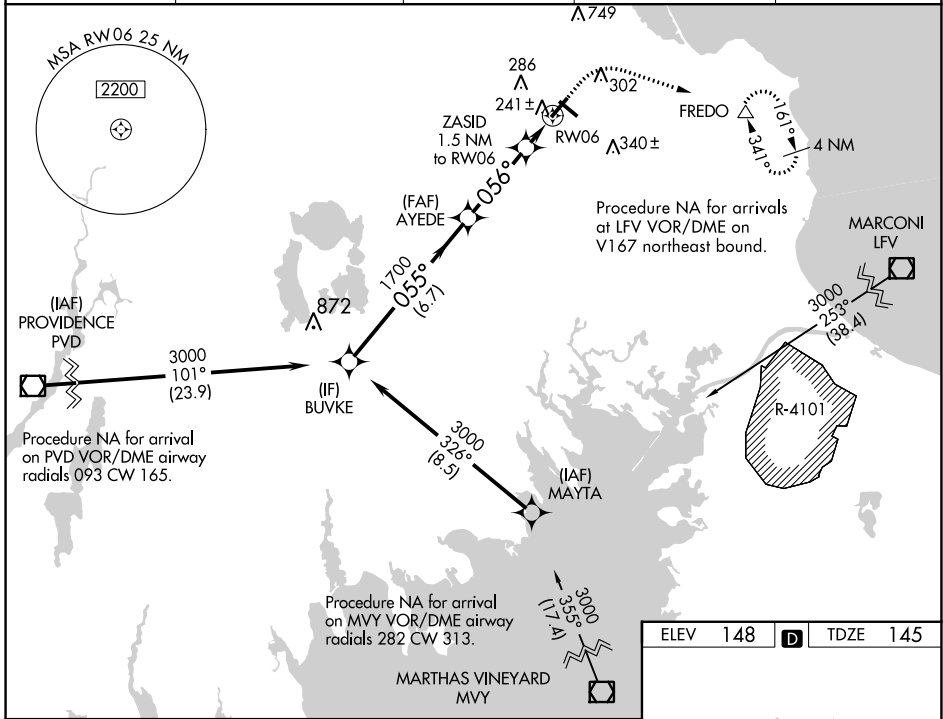
WAAS CH 40422 W06A	APP CRS 056°	Rwy Idg 4650 TDZE 145 Apt Elev 148
--	------------------------	---

RNAV (GPS) RWY 6

PLYMOUTH MUNI (PYM)

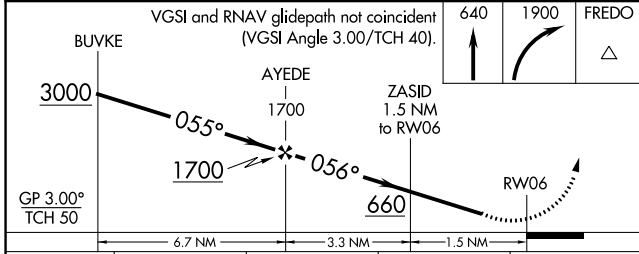
RNP APCH - GPS.	MALSIF	MISSED APPROACH: Climb to 640 then climbing right turn to 1900 direct FREDO and hold.
<p>▼ Circling Rwy 15, 24 NA at night. Rwy 6 helicopter visibility reduction below 3/4 SM NA.</p> <p>▲ For uncompensated Baro-VNAV systems, LNAV/VNAV NA below -17°C or above 54°C.</p> <p>For inop ALS, increase LPV all Cats visibility to 3/8 SM and LNAV/VNAV all Cats visibility to 1/2 SM.</p>		

ASOS 135.625	BOSTON APP CON * 118.2 284.6	CLNC DEL 127.75	UNICOM 122.725 (CTAF)	122.9
------------------------	--	---------------------------	---------------------------------	--------------

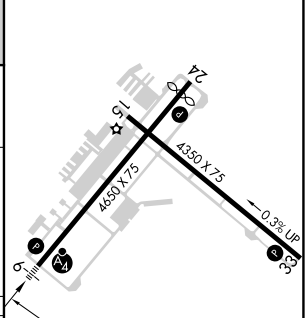


NE-1, 22 FEB 2024 to 21 MAR 2024

NE-1, 22 FEB 2024 to 21 MAR 2024



ELEV 148	D	TDZE 145
----------	----------	----------



	A	B	C	D
LPV DA	436-3/4	291 (300-3/4)		NA
LNAV/VNAV DA	426-3/4	281 (300-3/4)		NA
LNAV MDA	500-3/4	355 (400-3/4)		NA
C CIRCLING	620-1 472 (500-1)	640-1 492 (500-1)	760-1 3/4 612 (700-1 3/4)	NA

REIL Rwy 24 **1**

MIRL Rwy 6-24 and 15-33 **1**