

WAAS CH <b>86718</b> <b>W17A</b>	APP CRS <b>174°</b>	Rwy Idg <b>5001</b> TDZE <b>971</b> Apt Elev <b>971</b>
--	------------------------	---

# RNAV (GPS) RWY 17

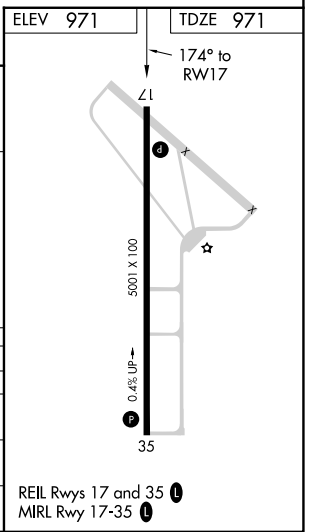
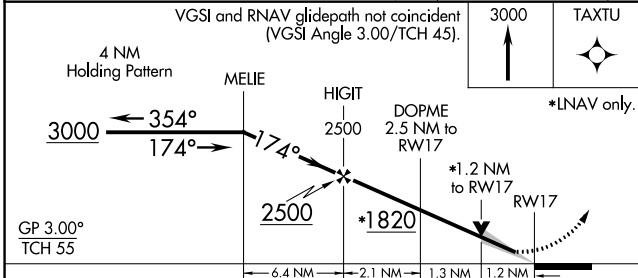
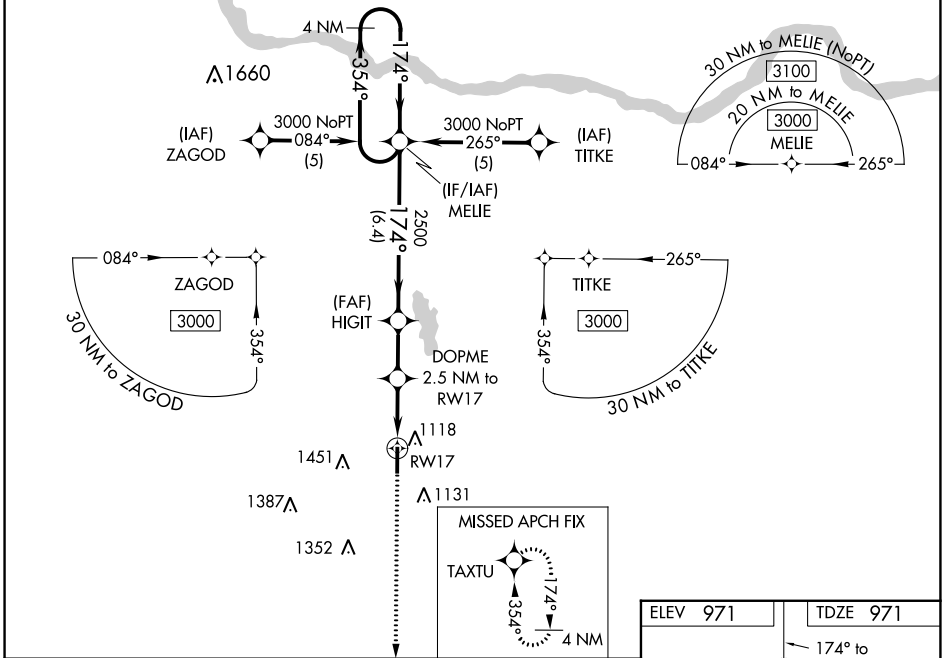
PAULS VALLEY MUNI (PVJ)

**RNP APCH.**

When local altimeter setting not received, use Ardmore Downtown Exec altimeter setting and increase all DA 97 feet and all MDA 100 feet and LNAV/VNAV visibility ¼ SM all Cats, LNAV Cat C, D visibility ¼ SM and Circling Cat C visibility ¼ SM, and Cat D visibility ½ SM. Baro-VNAV and VDP NA when using Ardmore Downtown Exec altimeter setting. For uncompensated Baro-VNAV systems, LNAV/VNAV NA below -16°C or above 46°C.

**MISSED APPROACH:**  
Climb to 3000 direct TAXTU and hold.

AWOS-3 <b>118.675</b>	FORT WORTH CENTER <b>124.75 323.0</b>	UNICOM <b>122.8 (CTAF) 0</b>
--------------------------	--	---------------------------------



GP 3.00° TCH 55	MELIE	HIGIT	DOPME	RWY 17
	2500	2500	2.5 NM to RWY 17	
		*1820	*1.2 NM to RWY 17	
	6.4 NM	2.1 NM	1.3 NM	1.2 NM
CATEGORY	A	B	C	D
LPV DA		1171-1	200 (200-1)	
LNAV/VNAV DA		1413-1½	442 (500-1½)	
LNAV MDA	1420-1	449 (500-1)	1420-1¼ 449 (500-1¼)	1420-1¾ 449 (500-1¾)
CIRCLING	1440-1	469 (500-1)	1540-1½ 569 (600-1½)	1760-2 789 (800-2)

REIL Rwy 17 and 35 0  
MIRL Rwy 17-35 0

SC-1, 22 FEB 2024 to 21 MAR 2024

SC-1, 22 FEB 2024 to 21 MAR 2024

WAAS CH <b>45716</b> <b>W35A</b>	APP CRS <b>354°</b>	Rwy Idg TDZE Apt Elev	<b>5001</b> <b>956</b> <b>971</b>
--	------------------------	-----------------------------	---

# RNAV (GPS) RWY 35

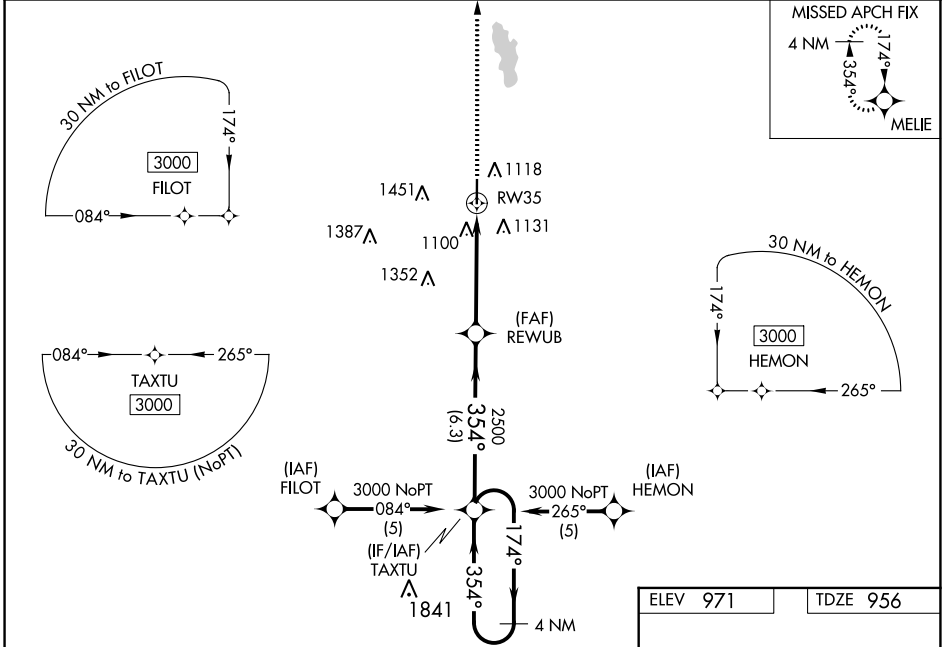
PAULS VALLEY MUNI (P.V.J)

**RNP APCH.**

When local altimeter setting not received, use Ardmore Downtown Exec altimeter setting: increase all DA 97 feet and all MDA 100 feet; increase LPV and LNAV/VNAV all Cats visibility and LNAV Cats C/D and Circling Cat C visibility ¼ SM and Circling Cat D visibility ½ SM. Baro-VNAV and VDP NA when using Ardmore Downtown Exec altimeter setting. For uncompensated Baro-VNAV systems, LNAV/VNAV NA below -16°C or above 46°C.

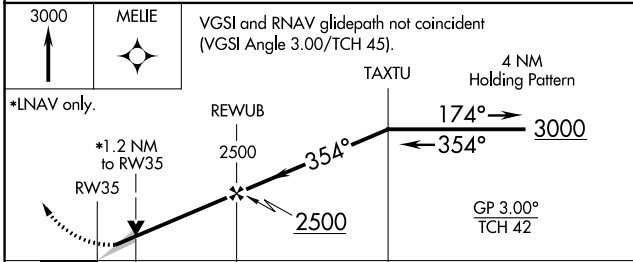
**MISSED APPROACH:**  
Climb to 3000 direct MELIE and hold.

AWOS-3 <b>118.675</b>	FORT WORTH CENTER <b>124.75 323.0</b>	UNICOM <b>122.8 (CTAF) ①</b>
--------------------------	--	---------------------------------

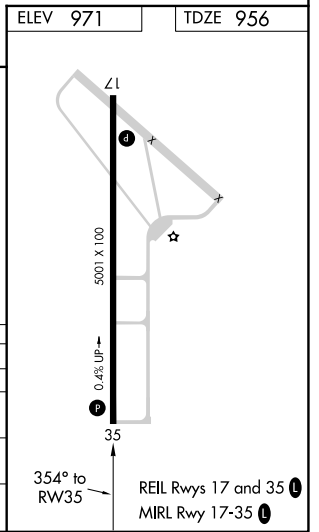


SC-1, 22 FEB 2024 to 21 MAR 2024

SC-1, 22 FEB 2024 to 21 MAR 2024



CATEGORY	A	B	C	D
LPV DA		1156-¾	200 (200-¾)	
LNAV/VNAV DA		1447-1¾	491 (500-1¾)	
LNAV MDA	1360-1	404 (400-1)	1360-1¼	404 (400-1¼)
CIRCLING	1440-1	469 (500-1)	1540-1½	1760-2½
			569 (600-1½)	789 (800-2½)



INSTRUMENT APPROACH PROCEDURE CHARTS

**A** IFR ALTERNATE AIRPORT MINIMUMS

Pilots must review the IFR Alternate Minimums Notes to determine alternate airport suitability.

**A**NA designation on the approach chart means that pilots may not use that approach as an alternate due to unmonitored facility, absence of weather reporting service, or lack of adequate navigation coverage. Approaches with the **A**NA designation are not listed in this section. **A** designation on the approach chart indicates that the approach procedure has non-standard minimums (for aircraft other than helicopters) or restrictions (for all users) for its use as an alternate.

Alternate Minima (ref: 14 CFR 91.169)

	Precision Approach	Non-Precision Approach
Standard	<b>600-2</b>	<b>800-2</b>
<b>A</b> Non-Standard or restrictions	As indicated below	As indicated below
Helicopters	For the selected approach: Ceiling: 200' above published ceiling Visibility: the greater of 1 SM visibility or the published visibility	
US Military (USA/USN/USAF)	See Service Regulations	

**Note:** For alternate airport flight planning purposes, precision approach operations include: ILS, PAR, and GLS, and Non-Precision approach operations include: NDB, VOR, LOC, TACAN, LDA, SDF, ASR, RNAV (GPS) and RNAV (RNP).

NAME ALTERNATE MINIMUMS

NAME ALTERNATE MINIMUMS

**ADA, OK**

**ARDMORE, OK (CON'T)**

ADA RGNL (ADH).....**RNAV (GPS) Rwy 18**  
**RNAV (GPS) Rwy 36**  
NA when local weather not available.  
Category C, 900-2¼; Category D, 900-2½.

ARDMORE  
MUNI (ADM).....**ILS or LOC Rwy 31<sup>12</sup>**  
**RNAV (GPS) Rwy 13<sup>3</sup>**  
**RNAV (GPS) Rwy 31<sup>4</sup>**  
**VOR-B<sup>5</sup>**

**ALTUS, OK**

NA when local weather not available.  
<sup>1</sup>NA when control tower closed.  
<sup>2</sup>LOC, Category D, 1000-3.  
<sup>3</sup>Category D, 800-2¼.  
<sup>4</sup>Category D, 1000-3.  
<sup>5</sup>Category C, 800-2¼ Category D, 1000-3.

ALTUS/QUARTZ MOUNTAIN  
RGNL (AXS).....**RNAV (GPS) Rwy 17**  
**RNAV (GPS) Rwy 35**  
**VOR-A<sup>1</sup>**

NA when local weather not available.  
<sup>1</sup>NA when Altus tower closed.

**BARTLESVILLE, OK**

**ALVA, OK**

BARTLESVILLE  
MUNI (BVO).....**RNAV (GPS) Rwy 17**  
**RNAV (GPS) Rwy 35**  
**VOR/DME Rwy 35<sup>1</sup>**

ALVA RGNL (AVK).....**RNAV (GPS) Rwy 18**  
**RNAV (GPS) Rwy 36**  
NA when local weather not available.  
Category C, 800-2¼.

NA when local weather not available.  
<sup>1</sup>Category D, 800-2¼.

**ARDMORE, OK**

**BATESVILLE, AR**

ARDMORE DOWNTOWN  
EXEC (1F0).....**RNAV (GPS) Rwy 17**  
**RNAV (GPS) Rwy 35**  
NA when local weather not available.  
Category D, 800-2¼; Category D, 800-2½.

BATESVILLE  
RGNL (BVX).....**RNAV (GPS) Rwy 8**  
**RNAV (GPS) Rwy 26**  
NA when local weather not available.  
Category C, 800-2¼; Category D, 1000-3.

22 FEB 2024 to 21 MAR 2024

22 FEB 2024 to 21 MAR 2024

NAME ALTERNATE MINIMUMS

**BENTON, AR**

SALINE COUNTY  
RGNL (SUZ).....**ILS or LOC Rwy 2<sup>1</sup>**  
**RNAV (GPS) Rwy 2<sup>2</sup>**  
**RNAV (GPS) Rwy 20<sup>2</sup>**

NA when local weather not available.  
<sup>1</sup>LOC, Category C, 900-2½; Category D, 900-2¾.  
<sup>2</sup>Category C, 900-2½; Category D, 900-2¾.

**BENTONVILLE, AR**

BENTONVILLE MUNI/LOUISE M THADEN  
FLD (VBT).....**RNAV (GPS) Rwy 18**  
**RNAV (GPS) Rwy 36**

NA when local weather not available.

**BLACKWELL, OK**

BLACKWELL-TONKAWA  
MUNI (BKN).....**RNAV (GPS) Rwy 17**  
**RNAV (GPS) Rwy 35**  
**VOR-A**

NA when local weather not available.

**BLYTHEVILLE, AR**

BLYTHEVILLE  
MUNI (HKA).....**RNAV (GPS) Rwy 18**  
**RNAV (GPS) Rwy 36**

NA when local weather not available.

**BURNS FLAT, OK**

CLINTON/  
SHERMAN (CSM).....**ILS or LOC Rwy 17R<sup>1</sup>**  
**RNAV (GPS) Rwy 17R<sup>2</sup>**  
**RNAV (GPS) Rwy 35L<sup>2</sup>**  
**VOR Rwy 35L<sup>2</sup>**

NA when control tower closed.  
<sup>1</sup>ILS, Category D, 700-2¼; Category E, 700-2½;  
LOC, Category D, 800-2¼;  
Category E, 800-2½.  
<sup>2</sup>Category D, 800-2¼; Category E, 800-2½.

**CAMDEN, AR**

HARRELL FLD (CDH).....**RNAV (GPS) Rwy 1**  
**RNAV (GPS) Rwy 19**

NA when local weather not available.  
Category D, 900-2¾.

**CHANDLER, OK**

CHANDLER  
RGNL (CQB).....**RNAV (GPS) Rwy 17**  
NA when local weather not available

**CLINTON, OK**

CLINTON  
RGNL (CLK).....**RNAV (GPS) Rwy 17**  
**RNAV (GPS) Rwy 35**

NA when local weather not available.

NAME ALTERNATE MINIMUMS

**CORNING, AR**

CORNING MUNI (4M9).....**RNAV (GPS) Rwy 18**  
**RNAV (GPS) Rwy 36**

NA when local weather not available.

**CUSHING, OK**

CUSHING  
MUNI (CUH).....**RNAV (GPS) Rwy 18**  
**RNAV (GPS) Rwy 36**

NA when local weather not available.  
Category D, 800-2¾.

**DEQUEEN, AR**

J. LYNN HELMS SEVIER  
COUNTY (DEQ).....**RNAV (GPS) Rwy 8**  
NA when local weather not available.

**DURANT, OK**

DURANT RGNL/  
EAKER FLD (DUA).....**RNAV (GPS) Rwy 17**  
**RNAV (GPS) Rwy 35**

NA when local weather not available.

**ELK CITY, OK**

ELK CITY  
RGNL BUSINESS (ELK).....**RNAV (GPS) Rwy 17<sup>1</sup>**  
**RNAV (GPS) Rwy 35**

Category D, 1000-3.  
<sup>1</sup>NA when local weather not available.

**EL RENO, OK**

EL RENO  
RGNL (RQO).....**RNAV (GPS) Rwy 17**  
**RNAV (GPS) Rwy 35**

NA when local weather not available.  
Category D, 800-2¾.

**ENID, OK**

ENID WOODRING  
RGNL (WDG).....**ILS or LOC Rwy 35<sup>123</sup>**  
**RNAV (GPS) Rwy 17<sup>14</sup>**  
**RNAV (GPS) Rwy 35<sup>4</sup>**  
**VOR Rwy 17<sup>15</sup>**  
**VOR Rwy 35<sup>15</sup>**

<sup>1</sup>NA when local weather not available.  
<sup>2</sup>NA when control tower closed.  
<sup>3</sup>LOC, Category D, 800-2¼; Category E, 900-3  
<sup>4</sup>Category D, 800-2¼; Category E, 900-3.  
<sup>5</sup>Category D, 800-2¼.

**FAYETTEVILLE, AR**

DRAKE FLD (FYV).....**LDA Rwy 34<sup>12</sup>**  
**LOC Rwy 16<sup>134</sup>**  
**RNAV (GPS) Rwy 16<sup>34</sup>**  
**RNAV (GPS) Rwy 34<sup>34</sup>**

<sup>1</sup>NA when control tower closed.  
<sup>2</sup>Category C, 1100-3.  
<sup>3</sup>NA when local weather not available.  
<sup>4</sup>Categories C, D, 1100-3.

22 FEB 2024 to 21 MAR 2024

22 FEB 2024 to 21 MAR 2024

NAME ALTERNATE MINIMUMS

**FAYETTEVILLE/SPRINGDALE/**

**ROGERS, AR**

NORTHWEST ARKANSAS

NTL (XNA).....**ILS or LOC Rwy 16L<sup>12</sup>**  
**ILS or LOC Rwy 34R<sup>12</sup>**  
**RNAV (GPS) Rwy 16L<sup>3</sup>**  
**RNAV (GPS) Rwy 34R<sup>3</sup>**

NA when local weather not available.

<sup>1</sup>NA when control tower closed.

<sup>2</sup>LOC, Category C, 800-2¼; Category D, 800-2½;

Category E, 800-2¾.

<sup>3</sup>Category C, 800-2¼; Category D, 800-2½;

Category E, 800-2¾.

**FLIPPIN, AR**

MARION COUNTY

RGNL (FLP).....**RNAV (GPS) Rwy 4**  
Category C, 800-2½.

**FORT SMITH, AR**

FORT SMITH

RGNL (FSM).....**ILS or LOC Rwy 8<sup>12</sup>**  
**ILS Z or LOC Z Rwy 26<sup>12</sup>**  
**RADAR-1<sup>23</sup>**  
**RNAV (GPS) Rwy 2<sup>4</sup>**  
**RNAV (GPS) Rwy 8<sup>3</sup>**  
**RNAV (GPS) Rwy 26<sup>3</sup>**  
**VOR Z or TACAN Z Rwy 8<sup>3</sup>**  
**VOR Z or TACAN Z Rwy 26<sup>3</sup>**

<sup>1</sup>LOC, Category C, 1000-2¾;

Categories D, E, 1000-3.

<sup>2</sup>NA when control tower closed.

<sup>3</sup>Category C, 1000-2¾; Categories D, E, 1000-3.

<sup>4</sup>Category C, 1000-2¾; Category D, 1000-3.

**FREDERICK, OK**

FREDERICK

RGNL (FDR).....**RNAV (GPS) Rwy 35**  
NA when local weather not available.

**GUTHRIE, OK**

GUTHRIE/EDMOND

RGNL (GOK).....**RNAV (GPS) Rwy 16**  
**RNAV (GPS) Rwy 34**  
NA when local weather not available.

**GUYMON, OK**

GUYMON MUNI (GUY).....**NDB Rwy 18<sup>1</sup>**  
**RNAV (GPS) Rwy 18**  
**RNAV (GPS) Rwy 36**

NA when local weather not available.

Category C, 900-2½.

<sup>1</sup>NA when APT manager's office closed.

**HARRISON, AR**

BOONE

COUNTY (HRO).....**RNAV (GPS) Rwy 18**  
**RNAV (GPS) Rwy 36**  
Category C, 1000-3; Category D, 1200-3.

NAME ALTERNATE

**HOBART, OK**

HOBART

RGNL (HBR).....**RNAV (GPS) Rwy 17**  
**RNAV (GPS) Rwy 35**  
**VOR Rwy 35**

NA when local weather not available.

Category C, 800-2¼; Category D, 900-3.

**HOLLIS, OK**

HOLLIS

MUNI (O35).....**RNAV (GPS) Rwy 18**  
**RNAV (GPS) Rwy 36**

Category B, 900-2.

**HOT SPRINGS, AR**

MEML FLD (HOT).....**VOR Rwy 5**

NA when local weather not available.

Category C, 900-2½; Category D, 1100-3.

**HUGO, OK**

STAN STAMPER

MUNI (HHW).....**RNAV (GPS) Rwy 17<sup>1</sup>**  
**RNAV (GPS) Rwy 35**

Category C, 800-2¼; Category D, 800-2½.

<sup>1</sup>NA when local weather not available.

**JONESBORO, AR**

JONESBORO

MUNI (JBR).....**ILS or LOC Rwy 23<sup>1</sup>**  
**RNAV (GPS) Rwy 5<sup>2</sup>**  
**RNAV (GPS) Rwy 23<sup>2</sup>**  
**RNAV (GPS) Rwy 31<sup>2</sup>**  
**VOR Rwy 23<sup>2</sup>**

NA when local weather not available.

<sup>1</sup>LOC, Category D, 900-2¼.

<sup>2</sup>Category D, 900-2¾.

**LAWTON, OK**

LAWTON-FORT SILL

RGNL (LAW).....**ILS or LOC Rwy 35<sup>12</sup>**  
**RNAV (GPS) Rwy 35<sup>3</sup>**  
**VOR Rwy 35<sup>3</sup>**

<sup>1</sup>NA when control tower closed.

<sup>2</sup>LOC, Category D, 800-2¼.

<sup>3</sup>Category D, 800-2¼.

22 FEB 2024 to 21 MAR 2024

22 FEB 2024 to 21 MAR 2024

NAME ALTERNATE MINIMUMS

**LITTLE ROCK, AR**

BILL AND HILLARY CLINTON NTL/  
ADAMS FLD (LIT).....**ILS or LOC Rwy 4L<sup>1</sup>**  
**ILS or LOC Rwy 4R<sup>1</sup>**  
**ILS or LOC Rwy 22L<sup>1</sup>**  
**ILS or LOC Rwy 22R<sup>23</sup>**  
**RNAV (GPS) Rwy 4L<sup>4</sup>**  
**RNAV (GPS) Rwy 4R<sup>4</sup>**  
**RNAV (GPS) Rwy 18<sup>4</sup>**  
**RNAV (GPS) Rwy 22L<sup>4</sup>**  
**RNAV (GPS) Rwy 22R<sup>4</sup>**  
**RNAV (GPS) Rwy 36<sup>4</sup>**  
**VOR-A<sup>4</sup>**

<sup>1</sup>LOC, Category C, 1000-2 $\frac{3}{4}$ ; Category D, 1000-3.  
<sup>2</sup>NA when local weather not available.  
<sup>3</sup>ILS, Category B, 800-2; Category C, 1000-2 $\frac{3}{4}$ ;  
Category D, 1000-3; LOC, Category C, 1000-2 $\frac{3}{4}$ ;  
Category D, 1000-3.  
<sup>4</sup>Category C, 1000-2 $\frac{3}{4}$ ; Category D, 1000-3.

**MC ALESTER, OK**

MC ALESTER  
RGNL (MLC).....**RNAV (GPS) Rwy 2**  
**RNAV (GPS) Rwy 20**  
NA when local weather not available.

**MENA, AR**

MENA INTERMOUNTAIN  
MUNI (MEZ).....**ILS or LOC Rwy 27<sup>1</sup>**  
**RNAV (GPS) Rwy 17<sup>2</sup>**  
NA when local weather not available.  
<sup>1</sup>LOC, Category B, 1100-2; Category C, 1200-3.  
<sup>2</sup>Category B, 1100-2; Category C, 1200-3.

**MIAMI, OK**

MIAMI RGNL (MIO).....**RNAV (GPS) Rwy 17**  
NA when local weather not available.

**MONTICELLO, AR**

MONTICELLO MUNI/  
ELLIS FLD (LLQ).....**RNAV (GPS) Rwy 3<sup>1</sup>**  
**RNAV (GPS) Rwy 21<sup>2</sup>**  
<sup>1</sup>NA when local weather not available.  
<sup>2</sup>Category D, 800-2 $\frac{1}{4}$ .

**MOUNTAIN HOME, AR**

BAXTER  
COUNTY (BPK).....**RNAV (GPS) Rwy 5**  
**RNAV (GPS) Rwy 23**  
NA when local weather not available.

**MUSKOGEE, OK**

MUSKOGEE-DAVIS  
RGNL (MKO).....**RNAV (GPS) Rwy 4<sup>1</sup>**  
**RNAV (GPS) Rwy 13<sup>2</sup>**  
**RNAV (GPS) Rwy 22<sup>1</sup>**  
**RNAV (GPS) Rwy 31<sup>2</sup>**

NA when local weather not available.  
<sup>1</sup>Category D, 800-2 $\frac{1}{2}$ .  
<sup>2</sup>Category D, 800-2 $\frac{1}{2}$ ; Category E, 1000-3.

NAME ALTERNATE MINIMUMS

**NEWPORT, AR**

NEWPORT  
RGNL (M19).....**RNAV (GPS) Rwy 18**  
**RNAV (GPS) Rwy 36**  
**VOR Rwy 18<sup>1</sup>**

NA when local weather not available.  
<sup>1</sup>Categories A, B, 1100-2; Categories C, D, 1100-3.

**NORMAN, OK**

UNIVERSITY OF OKLAHOMA  
WESTHEIMER (OUN).....**ILS or LOC Rwy 18<sup>12</sup>**  
**LOC Rwy 3<sup>13</sup>**  
**RNAV (GPS) Rwy 3<sup>3</sup>**  
**RNAV (GPS) Rwy 18<sup>3</sup>**  
**RNAV (GPS) Rwy 36<sup>3</sup>**

NA when local weather not available.  
<sup>1</sup>NA when control tower closed.  
<sup>2</sup>ILS, Categories A, B, 700-2; Category C,  
800-2 $\frac{1}{4}$ ; Category D, 800-2 $\frac{1}{2}$ ; LOC, Category C,  
800-2 $\frac{1}{4}$ ; Category D, 800-2 $\frac{1}{2}$ .  
<sup>3</sup>Category C, 800-2 $\frac{1}{4}$ ; Category D, 800-2 $\frac{1}{2}$ .

**NORTH LITTLE ROCK, AR**

NORTH LITTLE ROCK  
MUNI (ORK).....**LOC Rwy 5**  
**RNAV (GPS) Rwy 5**  
**RNAV (GPS) Rwy 35**  
NA when local weather not available.

**OKLAHOMA CITY, OK**

CLARENCE E.  
PAGE MUNI (RCE).....**RNAV (GPS) Rwy 17R**  
**RNAV (GPS) Rwy 35L**  
**VOR-B**

NA when local weather not available.

SUNDANCE (HSD).....**RNAV (GPS) Rwy 18**  
**RNAV (GPS) Rwy 36**  
**VOR Rwy 18**

NA when local weather not available.

WILEY POST (PWA).....**ILS or LOC Rwy 17L<sup>1</sup>**  
**ILS or LOC Rwy 35R<sup>1</sup>**  
**RNAV (GPS) Rwy 17L**  
**RNAV (GPS) Rwy 17R**  
**RNAV (GPS) Rwy 35L**  
**RNAV (GPS) Rwy 35R**  
**VOR Rwy 17L**  
**VOR Rwy 35R**

NA when local weather not available.  
<sup>1</sup>NA when control tower closed.

22 FEB 2024 to 21 MAR 2024

22 FEB 2024 to 21 MAR 2024

NAME ALTERNATE MINIMUMS

**OKLAHOMA CITY, OK (CON'T)**

WILL ROGERS  
WORLD (OKC).....ILS or LOC Rwy 17L<sup>1</sup>  
ILS or LOC Rwy 17R<sup>1</sup>  
ILS or LOC Rwy 35L<sup>1</sup>  
ILS or LOC Rwy 35R<sup>1</sup>  
RADAR-<sup>2</sup>  
RNAV (GPS) Rwy 13<sup>3</sup>  
RNAV (GPS) Rwy 31<sup>3</sup>  
RNAV (GPS) Y Rwy 17L<sup>4</sup>  
RNAV (GPS) Y Rwy 17R<sup>3</sup>  
RNAV (GPS) Y Rwy 35L<sup>4</sup>  
RNAV (GPS) Y Rwy 35R<sup>4</sup>  
VOR Rwy 17L<sup>5</sup>

<sup>1</sup>LOC, Category D, 800-2¼; Category E, 1000-3.<sup>2</sup>Category E, 1000-3.<sup>3</sup>Category D, 800-2¼.<sup>4</sup>Category D, 800-2¼; Category E, 1000-3.<sup>5</sup>Categories A, B, 1100-2;

Categories C, D, E, 1100-3.

**OKMULGEE, OK**

OKMULGEE RGNL/PAUL AND BETTY  
ABBOTT FLD (OKM).....RNAV (GPS) Rwy 18<sup>1</sup>  
RNAV (GPS) Rwy 36<sup>2</sup>

<sup>1</sup>NA when local weather not available.<sup>2</sup>Category D, 1000-3.**PAULS VALLEY, OK**

PAULS VALLEY  
MUNI (PVJ).....RNAV (GPS) Rwy 17  
RNAV (GPS) Rwy 35<sup>1</sup>

NA when local weather not available.

<sup>1</sup>Category D, 800-2½.**PINE BLUFF, AR**

PINEBLUFF RGNL/GRIDER  
FLD (PBF).....RNAV (GPS) Rwy 18  
RNAV (GPS) Rwy 36

NA when local weather not available.

Category D, 800-2¼.

**POCAHONTAS, AR**

POCAHONTAS  
MUNI (M70).....RNAV (GPS) Rwy 18  
RNAV (GPS) Rwy 36

Category C, 900-2½; Category D, 900-2¼.

**PONCA CITY, OK**

PONCA CITY  
RGNL (PNC).....RNAV (GPS) Rwy 17  
RNAV (GPS) Rwy 35  
VOR-A

NA when local weather not available.

Category C, 800-2¼; Category D, 900-2¼.

NAME ALTERNATE MINIMUMS

**POTEAU, OK**

ROBERT S KERR (RKR).....RNAV (GPS) Rwy 18  
RNAV (GPS) Rwy 36  
NA when local weather not available.  
Category D, 800-2¼.

**PRYOR, OK**

MID-AMERICA  
INDUSTRIAL (H71).....RNAV (GPS) Rwy 36  
Category C, 1000-2¾; Category D, 1000-3.  
NA when local weather not available.

**ROGERS, AR**

ROGERS EXEC - CARTER  
FLD (ROG).....ILS or LOC Rwy 20<sup>1</sup>  
RNAV (GPS) Rwy 2  
RNAV (GPS) Rwy 20

NA when local weather not available.

<sup>1</sup>NA when tower closed.**RUSSELLVILLE, AR**

RUSSELLVILLE  
RGNL (RUE).....RNAV (GPS) Rwy 7<sup>1</sup>  
RNAV (GPS) Rwy 25<sup>2</sup>

<sup>1</sup>Category C, 1000-2¾; Category D, 1000-3.<sup>2</sup>Categories A, B, 900-2; Category C, 1000-2¾;

Category D, 1000-3.

**SEARCY, AR**

SEARCY MUNI (SRC).....RNAV (GPS) Rwy 1  
RNAV (GPS) Rwy 19  
NA when local weather not available.

**SEMINOLE, OK**

SEMINOLE  
MUNI (SRE).....RNAV (GPS) Rwy 16  
NA when local weather not available.

**SHAWNEE, OK**

SHAWNEE  
RGNL (SNL).....ILS or LOC Rwy 17  
RNAV (GPS) Rwy 17  
RNAV (GPS) Rwy 35  
NA when local weather not available.

**SILOAM SPRINGS, AR**

SMITH FLD (SLG).....RNAV (GPS) Rwy 18  
RNAV (GPS) Rwy 36

NA when local weather not available.

Category D, 800-2¼.

**SPRINGDALE, AR**

SPRINGDALE  
MUNI (ASG).....RNAV (GPS) Rwy 36  
Category D, 900-2¾.  
NA when local weather not available.

NAME ALTERNATE MINIMUMS

**STIGLER, OK**

STIGLER RGNL (GZL).....RNAV (GPS) Rwy 35  
NA when local weather not available.

**STILLWATER, OK**

STILLWATER  
RGNL (SWO).....ILS or LOC Rwy 17<sup>12</sup>  
RNAV (GPS) Rwy 17<sup>3</sup>  
RNAV (GPS) Rwy 35<sup>3</sup>  
VOR Rwy 17<sup>3</sup>  
VOR/DME Rwy 35<sup>3</sup>

NA when local weather not available.

<sup>1</sup>NA when control tower closed.

<sup>2</sup>LOC, Category D, 800-2¼.

<sup>3</sup>Category D, 800-2¼.

**STUTTGA RT, AR**

STUTTGA RT MUNI CARL HUMPHREY  
FIELD (SGT).....ILS or LOC Rwy 36  
RNAV (GPS) Rwy 9  
RNAV (GPS) Rwy 18  
RNAV (GPS) Rwy 27  
RNAV (GPS) Rwy 36

NA when local weather not available.

**TAHLEQUAH, OK**

TAHLEQUAH  
MUNI (TQH).....RNAV (GPS) Rwy 17  
RNAV (GPS) Rwy 35

NA when local weather not available.

Category C, 1000-2¼.

**TEXARKANA, AR**

TEXARKANA RGNL-WEBB  
FLD (TXK).....ILS or LOC Rwy 22<sup>12</sup>  
RNAV (GPS) Rwy 4<sup>3</sup>  
RNAV (GPS) Rwy 13<sup>3</sup>  
RNAV (GPS) Rwy 22<sup>3</sup>  
RNAV (GPS) Rwy 31<sup>3</sup>  
VOR Rwy 13<sup>3</sup>

NA when local weather not available.

<sup>1</sup>NA when control tower closed.

<sup>2</sup>LOC, Category D, 800-2¼.

<sup>3</sup>Category D, 800-2¼

NAME ALTERNATE MINIMUMS

**TULSA, OK**

TULSA INTL (TUL).....ILS or LOC Rwy 18L<sup>2</sup>  
ILS or LOC Rwy 18R<sup>1</sup>  
ILS or LOC Rwy 36R<sup>3</sup>  
RADAR-1<sup>4</sup>  
RNAV (GPS) Rwy 8<sup>4</sup>  
RNAV (GPS) Rwy 18L<sup>4</sup>  
RNAV (GPS) Rwy 18R<sup>4</sup>  
RNAV (GPS) Rwy 36L<sup>5</sup>  
RNAV (GPS) Rwy 36R<sup>4</sup>  
VOR/DME Rwy 8<sup>1</sup>  
VOR or TACAN Rwy 26<sup>4</sup>

<sup>1</sup>LOC, Category C, 900-2¼; Category D, 900-2¼.

<sup>2</sup>LOC, Category C, 900-2¼;

Category D, 900-2¼; Category E, 900-3.

<sup>3</sup>LOC, Category C, 900-2¼; Category D, 900-2¼; Category E, 900-3.

<sup>4</sup>Category C, 900-2¼; Category D, 900-2¼; Category E, 900-3.

<sup>5</sup>Category C, 900-2¼; Category D, 900-2¼.

TULSA RIVERSIDE (RVS)....ILS or LOC Rwy 1L<sup>12</sup>  
RNAV (GPS) Rwy 1L<sup>3</sup>  
RNAV (GPS) Rwy 19R<sup>3</sup>  
VOR/DME-A<sup>3</sup>

<sup>1</sup>NA when control tower closed.

<sup>2</sup>LOC, Category D, 800-2¼.

<sup>3</sup>Category D, 800-2¼.

**WALNUT RIDGE, AR**

WALNUT RIDGE  
RGNL (ARG).....RNAV (GPS) Rwy 4  
RNAV (GPS) Rwy 18  
RNAV (GPS) Rwy 22  
RNAV (GPS) Rwy 36

NA when local weather not available.

Category D, 800-2¼.

**WEATHERFORD, OK**

WEATHERFORD  
STAFFORD (OJA).....RNAV (GPS) Rwy 17  
RNAV (GPS) Rwy 35

NA when local weather not available.

Category C, 800-2¼.

**WEST MEMPHIS, AR**

WEST MEMPHIS  
MUNI (AWM).....RNAV (GPS) Rwy 17  
RNAV (GPS) Rwy 35

NA when local weather not available.

Category D, 800-2¼.

**WOODWARD, OK**

WEST  
WOODWARD (WWR).....RNAV (GPS) Rwy 17  
RNAV (GPS) Rwy 35  
VOR/DME-A

NA when local weather not available.

Category C, 800-2¼; Category D, 800-2¼.

22 FEB 2024 to 21 MAR 2024

22 FEB 2024 to 21 MAR 2024