

LOC/DME I-EIF 108.3 Chan 20	APP CRS 259°	Rwy Idg TDZE Apt Elev 5791 1159 1188
--	------------------------	--

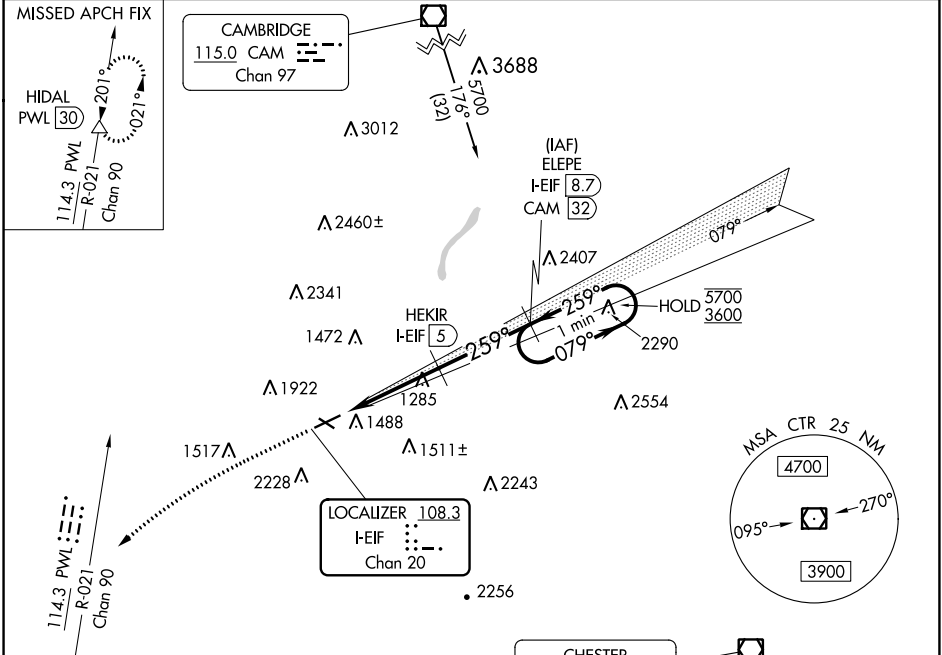
LOC RWY 26

PITTSFIELD MUNI (PSF)

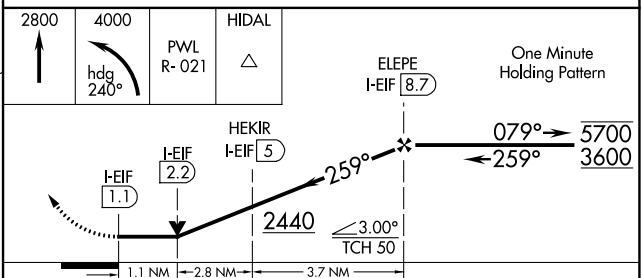
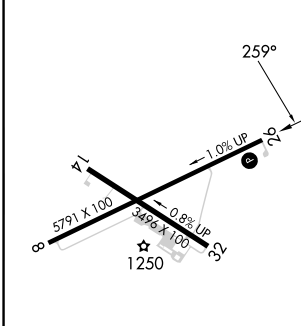
DME required.
 Circling NA south of Rwy 8 and southwest of Rwy 32.

MISSED APPROACH: Climb to 2800 then climbing left turn to 4000 on heading 240° and PWL VOR/DME R-021 to HIDAL INT/PWL 30 DME and hold.
 *Missed approach requires minimum climb of 300 feet per NM to 2800.

ASOS 135.375	ALBANY APP CON 132.825 307.2	CLNC DEL 128.6	UNICOM 122.7 (CTAF)
------------------------	--	--------------------------	-------------------------------



ELEV 1188	TDZE 1159
-----------	-----------



CATEGORY	A	B	C	D
S-LOC 26*	1540-1	381 (400-1)	1540-1½	381 (400-1½)
S-LOC 26	1880-1	721 (700-1)	1880-2	721 (700-2)
CIRCLING	1880-1 692 (700-1)	2160-1½ 972 (1000-1½)	2400-3 1212 (1300-3)	2680-3 1492 (1500-3)

NE-1, 22 FEB 2024 to 21 MAR 2024

NE-1, 22 FEB 2024 to 21 MAR 2024

WAAS CH 42835	APP CRS 259°	Rwy Idg TDZE 1159	5791
W26A		Apt Elev 1188	

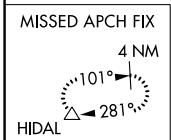
RNAV (GPS) RWY 26

PITTSFIELD MUNI (PSF)

RNP APCH - GPS.		MISSED APPROACH: Climb to 2800 then climbing left turn to 4000 direct HIDL and hold.	
<p>▼ Circling NA south of Rwy 8 and southwest of Rwy 32. ▲ For uncompensated Baro-VNAV systems, LNAV/VNAV NA below -21°C or above 54°C.</p>		<p>* Missed approach requires minimum climb of 285 feet per NM to 2700.</p>	
ASOS 135.375	ALBANY APP CON 132.825 307.2	CLNC DEL 128.6	UNICOM 122.7 (CTAF) 0

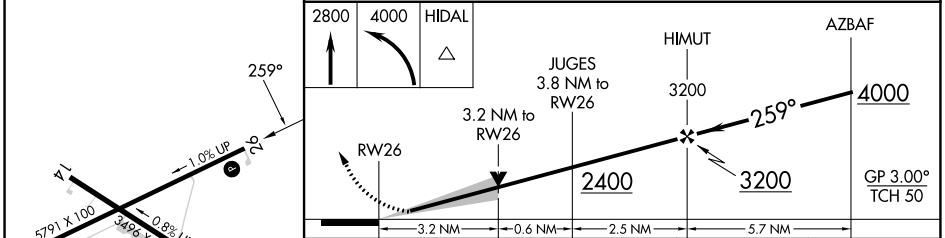


Procedure NA for arrival on CAM VOR/DME airway radials 108 CW 248.



Procedure NA for arrivals at CTR VOR/DME on V146 southeast bound.

ELEV 1188	TDZE 1159
-----------	-----------



CATEGORY	A	B	C	D
LPV DA*	1409-1		250 (300-1)	
LPV DA	1678-1 $\frac{3}{8}$		519 (500-1 $\frac{3}{8}$)	
LNAV/VNAV DA	1911-2		752 (800-2)	
LNAV MDA	2220-1 $\frac{1}{4}$ 1061 (1100-1 $\frac{1}{4}$)	2220-1 $\frac{1}{2}$ 1061 (1100-1 $\frac{1}{2}$)	2220-3	1061 (1100-3)
CIRCLING	2220-1 $\frac{1}{4}$ 1032 (1100-1 $\frac{1}{4}$)	2220-1 $\frac{1}{2}$ 1032 (1100-1 $\frac{1}{2}$)	2400-3 1212 (1300-3)	2680-3 1492 (1500-3)

REIL Rwy 26 0
MIRL Rwy 8-26 and 14-32 0

NE-1, 22 FEB 2024 to 21 MAR 2024

NE-1, 22 FEB 2024 to 21 MAR 2024

WAAS CH 93935 W08A	APP CRS 079°	Rwy Idg TDZE Apt Elev	5791 1188 1188
--	------------------------	-----------------------------	---

RNAV (GPS) RWY 8

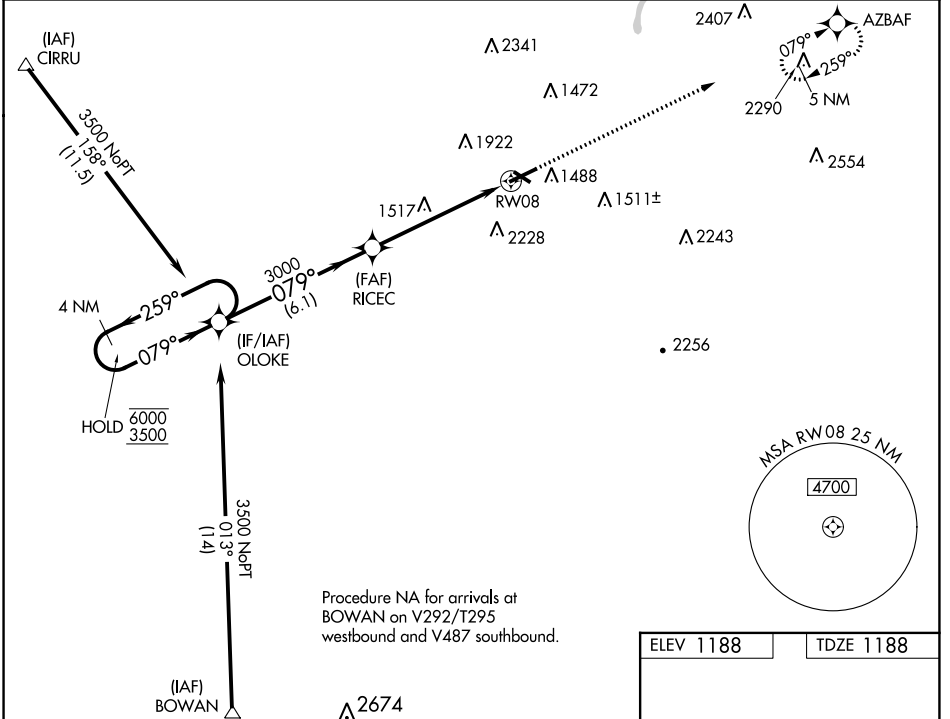
PITTSFIELD MUNI (PSF)

RNP APCH - GPS.

⚠ Circling NA south of Rwy 8 and southwest of Rwy 32. Rwy 8 helicopter visibility reduction below 1 SM NA. For uncompensated Baro-VNAV systems, LNAV/VNAV NA below -20°C or above 54°C.

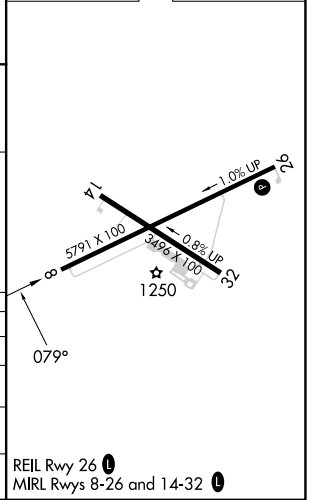
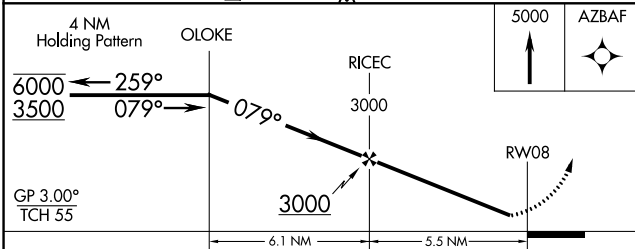
⚠ MISSED APPROACH: Climb to 5000 direct AZBAF and hold, continue climb-in-hold to 5000.

ASOS 135.375	ALBANY APP CON 132.825 307.2	CLNC DEL 128.6	UNICOM 122.7 (CTAF) 0
------------------------	--	--------------------------	---------------------------------



Procedure NA for arrivals at BOWAN on V292/T295 westbound and V487 southbound.

ELEV 1188	TDZE 1188
-----------	-----------



CATEGORY	A	B	C	D
LPV DA		1475-1	287 (300-1)	
LNAV/VNAV DA		2073-2½	885 (900-2½)	
LNAV MDA	2140-1¼ 952 (1000-1¼)	2140-1½ 952 (1000-1½)	2140-3	952 (1000-3)
C CIRCLING	2140-1¼ 952 (1000-1¼)	2160-1½ 972 (1000-1½)	2400-3 1212 (1300-3)	2680-3 1492 (1500-3)

REIL Rwy 26 **0**
MRL Rwy 8-26 and 14-32 **0**

NE-1, 22 FEB 2024 to 21 MAR 2024

NE-1, 22 FEB 2024 to 21 MAR 2024