

LOC I-POC 110.5	APP CRS 259°	Rwy Idg TDZE Apt Elev	4151 1005 1014
---------------------------	------------------------	-----------------------------	---

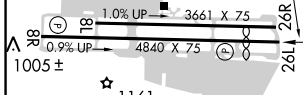
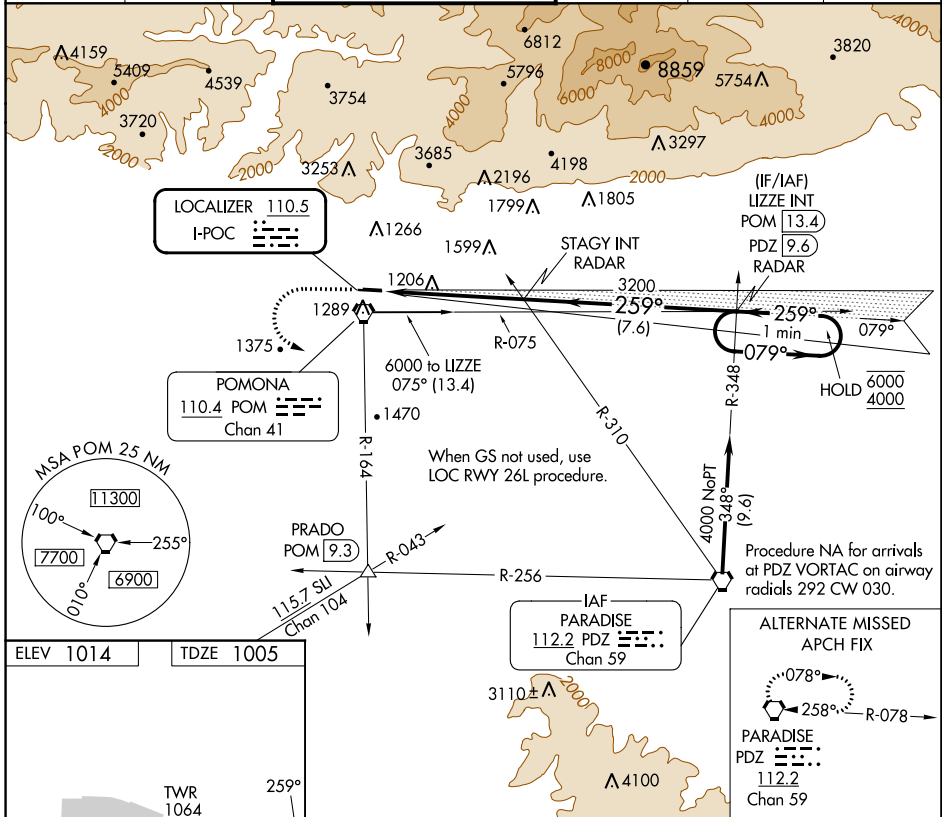
ILS RWY 26L

BRACKETT FLD (POC)

⚠ Rwy 26L helicopter visibility reduction below 3/4 SM NA.
⚠ When local altimeter setting not received, use Ontario Intl altimeter setting and increase DA to 1364.

MISSED APPROACH: Climb to 2100 then climbing left turn to 4000 on POM VORTAC R-164 to PRADO INT/POM 9.3 DME.

ATIS 124.4	SOCAL APP CON 125.5 349.0	BRACKETT TOWER* RWY 8R/26L RWY 8L/26R 118.2 (CTAF) 133.3	GND CON 125.0	CLNC DEL 121.875	UNICOM 122.95
----------------------	-------------------------------------	--	-------------------------	----------------------------	-------------------------



ELEV 1014 TDZE 1005

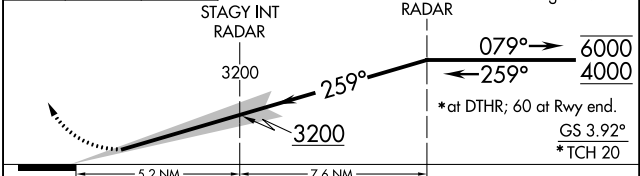
When GS not used, use LOC RWY 26L procedure.

Procedure NA for arrivals at PDZ VORTAC on airway radials 292 CW 030.

ALTERNATE MISSED APCH FIX

PARADISE PDZ 112.2 Chan 59

One Minute Holding Pattern



REIL Rws 8R and 26L MIRL Rwy 8R-26L	CATEGORY	A	B	C	D
	S-ILS 26L	1332-1	327 (400-1)		NA

SW-3, 22 FEB 2024 to 21 MAR 2024

SW-3, 22 FEB 2024 to 21 MAR 2024

LOC I-POC 110.5	APP CRS 259°	Rwy Idg TDZE Apt Elev	4151 1005 1014
---------------------------	------------------------	-----------------------------	---

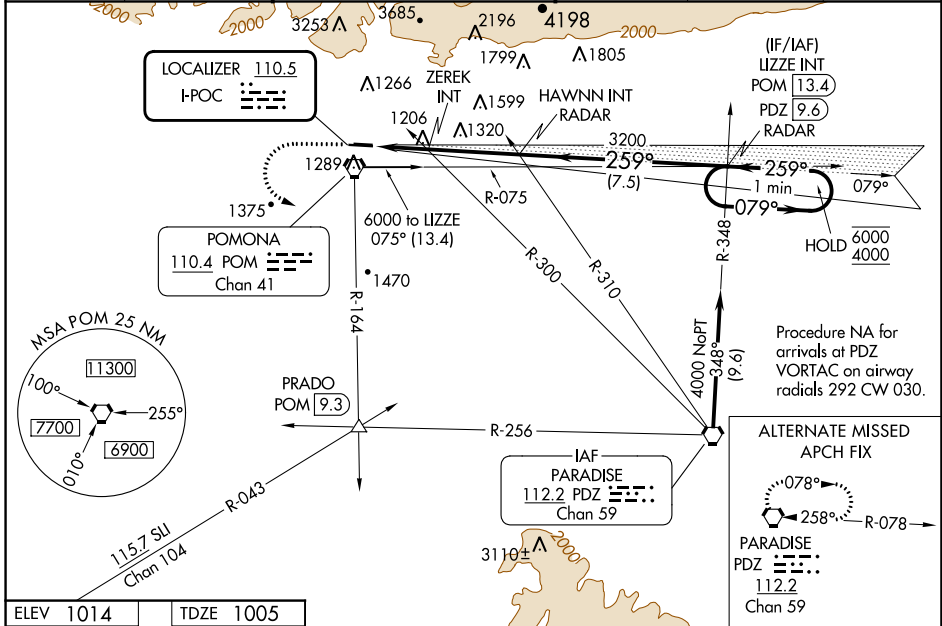
LOC RWY 26L

BRACKETT FLD (POC)

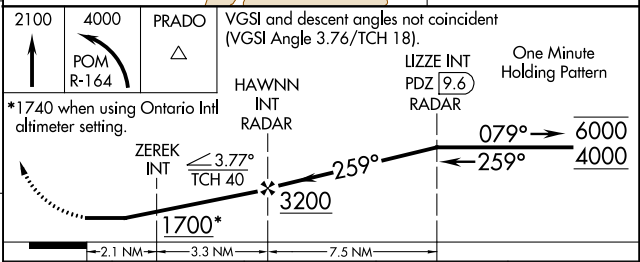
⚠ Circling to Rwy 8L NA at night. Circling NA for Cat C north of Rwy 8L-26R. When Circling to Rwy 8R at night, operational VGSi required, remain on or above VGSi glidepath until threshold. Rwy 26L helicopter visibility reduction below ¾ SM NA. When local altimeter setting not received, use Ontario Intl altimeter setting and increase all MDAs 40 feet.

MISSED APPROACH: Climb to 2100 then climbing left turn to 4000 on POM VORTAC R-164 to PRADO INT/POM 9.3 DME and hold.

ATIS 124.4	SOCAL APP CON 125.5 349.0	BRACKETT TOWER* RWY 8R/26L 118.2 (CTAF)	RWY 8L/26R 133.3	GND CON 125.0	CLNC DEL 121.875	UNICOM 122.95
----------------------	-------------------------------------	--	----------------------------	-------------------------	----------------------------	-------------------------



ELEV 1014	TDZE 1005
-----------	-----------



REIL Rwys 8R and 26L MIRL Rwy 8R-26L					
FAF to MAP 5.4 NM					
Knots	60	90	120	150	180
Min:Sec	5:24	3:36	2:42	2:10	1:48

CATEGORY	A	B	C	D
S-LOC 26L	1700-1	695 (700-1)	1700-2 695 (700-2)	NA
C CIRCLING	1700-1	686 (700-1)	1760-2¼ 746 (800-2¼)	NA
ZEREK MINIMUMS (DUAL VOR RECEIVERS REQUIRED)				
S-LOC 26L	1460-1	455 (500-1)	1460-1⅜ 455 (500-1⅜)	NA
C CIRCLING	1680-1	666 (700-1)	1760-2¼ 746 (800-2¼)	NA

SW-3, 22 FEB 2024 to 21 MAR 2024

SW-3, 22 FEB 2024 to 21 MAR 2024

WAAS CH 70624 W26A	APP CRS 259°	Rwy Idg TDZE Apt Elev	4151 1005 1014
--	------------------------	-----------------------------	---

RNAV (GPS) RWY 26L

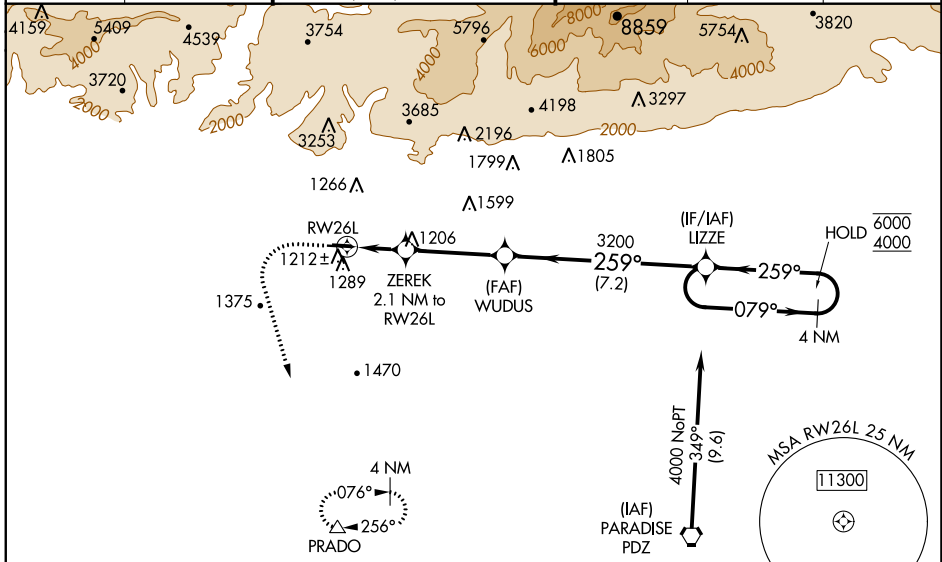
BRACKETT FLD (POC)

RNP APCH.

⚠ Baro-VNAV and VDP NA when using Ontario altimeter setting. Rwy 26L helicopter visibility reduction below 3/4 SM NA. For uncompensated Baro-VNAV systems, LNAV/VNAV NA below -17°C or above 54°C. When local altimeter setting not received, use Ontario Intl altimeter setting and increase all DA 32 feet and all MDA 40 feet, increase LPV and LNAV/VNAV all Cats visibility 1/8 SM. Circling NA for Cat C north of Rwy 8L-26R. Circling to Rwy 8L NA at night. When Circling to Rwy 8R at night, operational VGSI required, remain on or above VGSI glidepath until threshold.

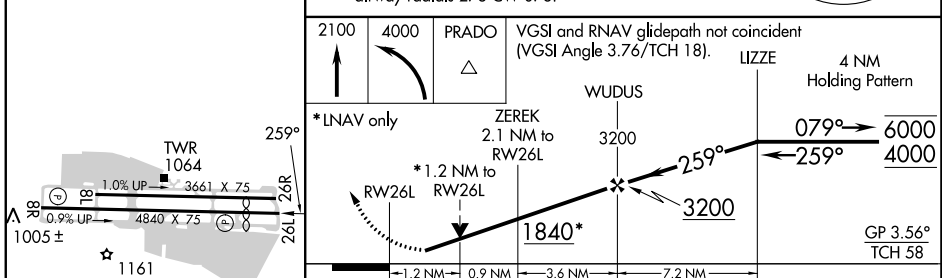
⚠ MISSED APPROACH: Climb to 2100 then climbing left turn to 4000 direct PRADO and hold.

ATIS 124.4	SOCAL APP CON 125.5 349.0	BRACKETT TOWER★ RWY 8R/26L 118.2 (CTAF)	RWY 8L/26R 133.3	GND CON 125.0	CLNC DEL 121.875	UNICOM 122.95
----------------------	-------------------------------------	--	----------------------------	-------------------------	----------------------------	-------------------------



ELEV 1014	TDZE 1005
-----------	-----------

Procedure NA for arrivals on PDZ VORTAC airway radials 278 CW 078.



CATEGORY	A	B	C	D
LPV DA	1305-7/8	300 (300-7/8)		NA
LNAV/VNAV DA	1444-1 1/4	439 (500-1 1/4)		NA
LNAV MDA	1500-1	495 (500-1)	1500-1 3/8 495 (500-1 3/8)	NA
CIRCLING	1680-1	666 (700-1)	1760-2 1/4 746 (800-2 1/4)	NA

SW-3, 22 FEB 2024 to 21 MAR 2024

SW-3, 22 FEB 2024 to 21 MAR 2024

VORTAC POM 110.4 Chan 41	APP CRS 344°	Rwy Idg TDZE Apt Elev	N/A N/A 1014
---------------------------------------	------------------------	-----------------------------	---

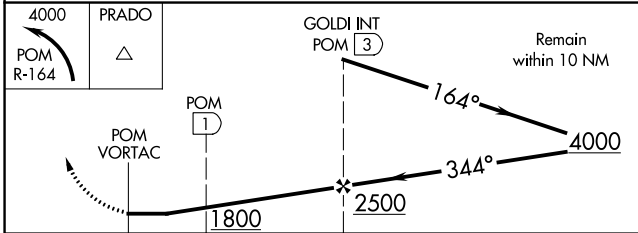
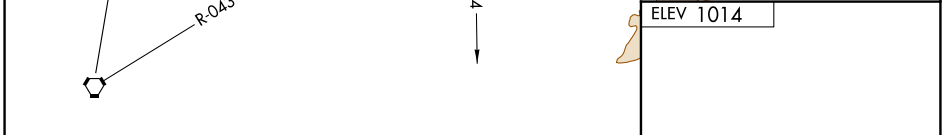
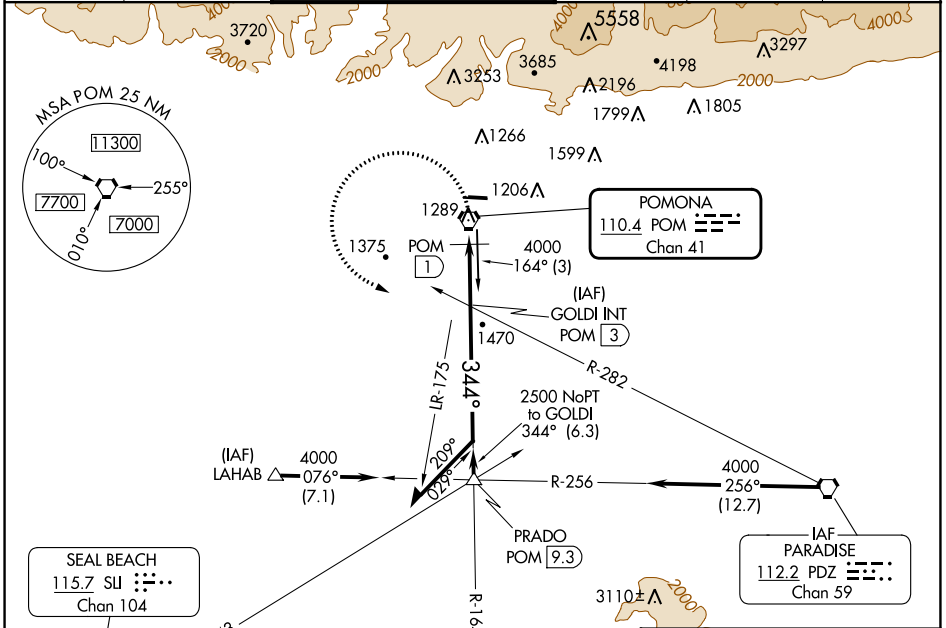
VOR or GPS-A

BRACKETT FLD (POC)

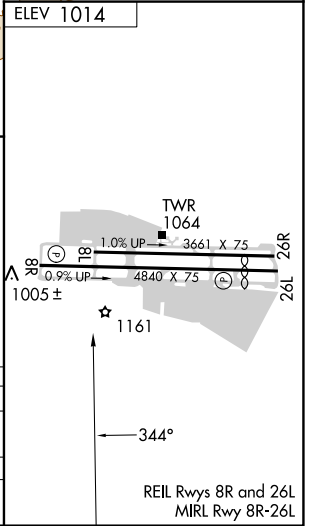
⚠ When local altimeter setting not received, use Ontario Intl altimeter setting and increase all MDA 40 feet and visibility Cat C ¼ mile. Night landing: Rwy 8L NA, Rwy 8R operational VGSi required, remain on or above VGSi glidepath until threshold. Helicopter visibility reduction below 1 SM not authorized. Circling NA for Cat C north of Rwy 8L-26R

MISSED APPROACH: Climbing left turn to 4000 via POM R-164 to PRADO INT.

ATIS 124.4	SOCAL APP CON 125.5 349.0	BRACKETT TOWER* RWY 8R/26L 118.2 (CTAF)	RWY 8L/26R 133.3	GND CON 125.0	CLNC DEL 121.875	UNICOM 122.95
----------------------	-------------------------------------	--	----------------------------	-------------------------	----------------------------	-------------------------



CATEGORY	A	B	C	D
C CIRCLING	1800-1 786 (800-1)	1800-1¼ 786 (800-1¼)	1800-2¼ 786 (800-2¼)	NA
DME MINIMUMS				
C CIRCLING	1680-1 666 (700-1)		1760-2¼ 746 (800-2¼)	NA



SW-3, 22 FEB 2024 to 21 MAR 2024

SW-3, 22 FEB 2024 to 21 MAR 2024