

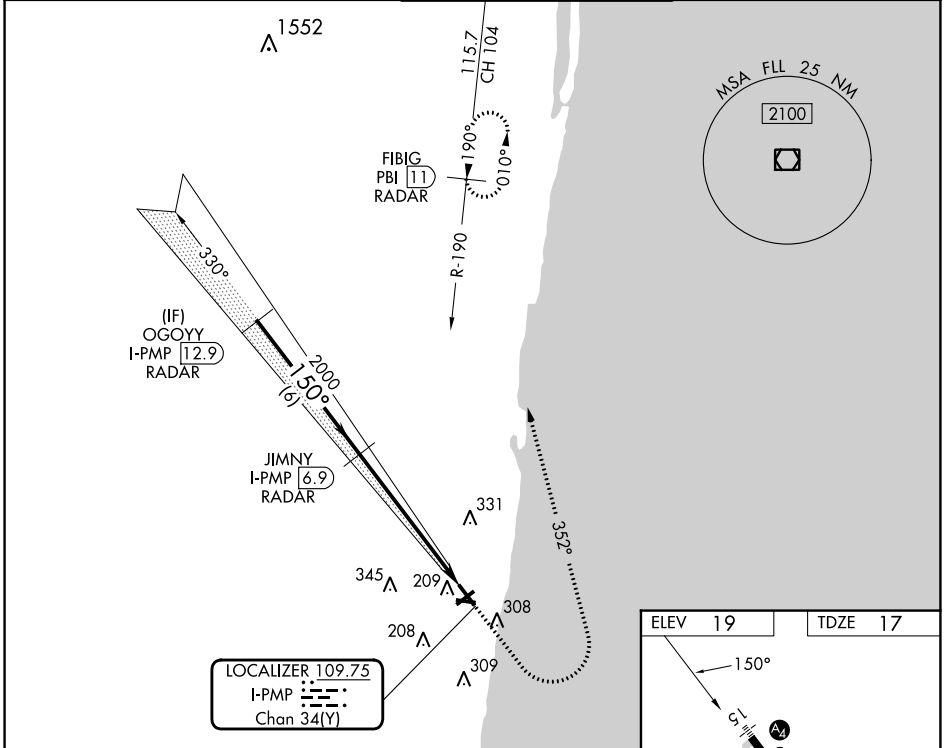
LOC/DME I-PMP 109.75 Chan 34(Y)	APP CRS 150°	Rwy ldg 4418 TDZE 17 Apt Elev 19
---	------------------------	---

LOC RWY 15

POMPANO BEACH AIRPARK (PMP)

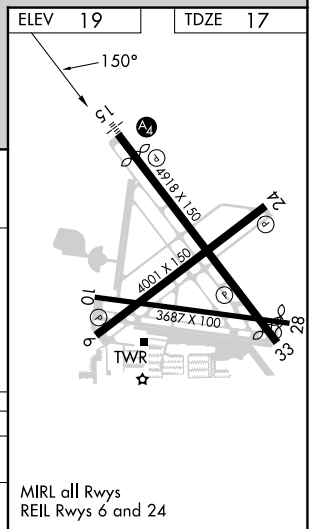
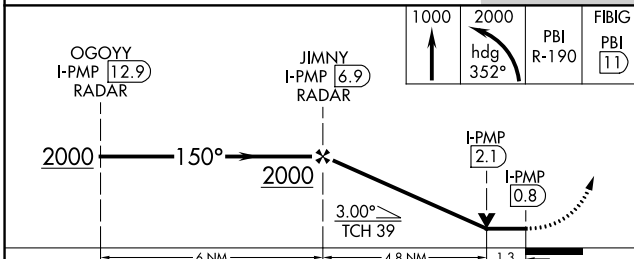
DME required. RADAR required for procedure entry.		MALS	MISSED APPROACH: Climb to 1000 then climbing left turn to 2000 on heading 352° and PBI VORTAC R-190 to FIBIG/PBI 11 DME/RADAR and hold.
<p>⚠ Rwy 15 helicopter visibility reduction below 1 SM NA. Inop table does not apply. VDP NA. Procedure NA at night.</p>			

ATIS 120.55	MIAMI APP CON 119.7 306.3	POMPANO BEACH TOWER ★ 125.4 (CTAF) 0	GND CON 121.9	UNICOM 122.95
-----------------------	-------------------------------------	--	-------------------------	-------------------------



SE-3, 22 FEB 2024 to 21 MAR 2024

SE-3, 22 FEB 2024 to 21 MAR 2024



CATEGORY	A	B	C	D
S-LOC 15	480-1	463 (500-1)		NA
C CIRCLING	660-1	641 (700-1)		NA

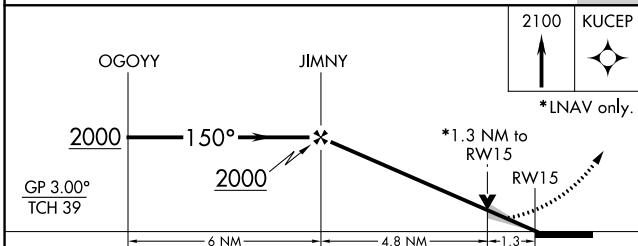
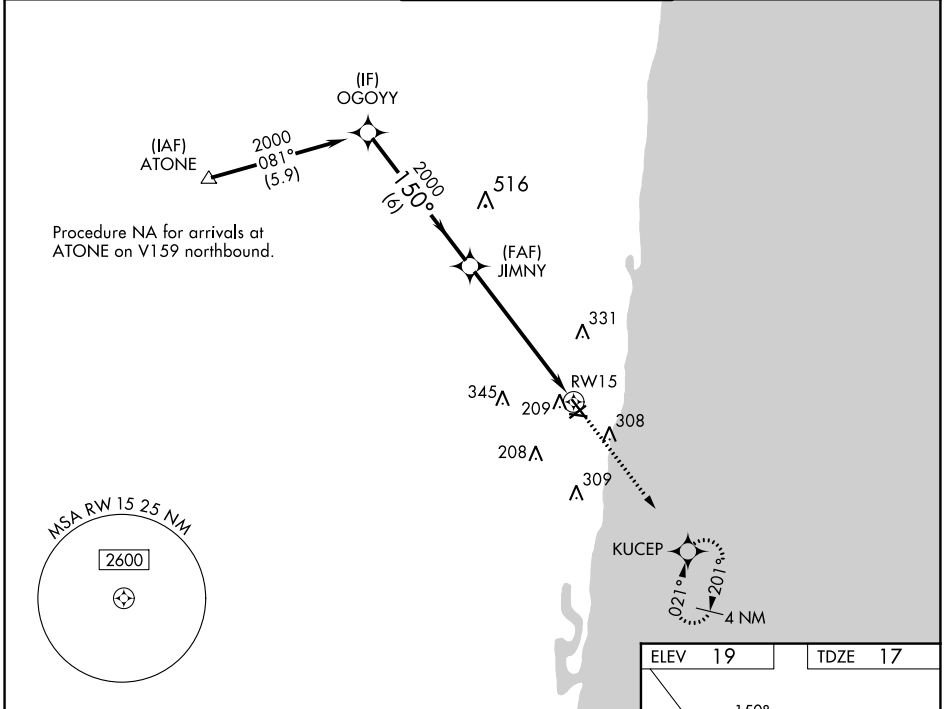
WAAS CH 82500 W15A	APP CRS 150°	Rwy Idg TDZE Apt Elev	4418 17 19
---------------------------------	------------------------	-----------------------------	---------------------------------------

RNAV (GPS) RWY 15

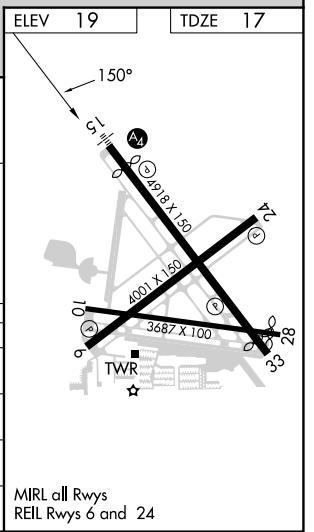
POMPANO BEACH AIRPARK (PMP)

<p>⚠ Inop table does not apply. For uncompensated Baro-VNAV systems, LNAV/VNAV NA below 0°C (32°F) or above 54°C (130°F). DME/DME RNP-0.3 NA. When local altimeter setting not received, use Fort Lauderdale Exec altimeter setting.</p>	<p>MALS</p>	<p>MISSED APPROACH: Climb to 2100 direct KUCEP and hold.</p>
---	-------------	--

ATIS 120.55	MIAMI APP CON 119.7 306.3	POMPANO BEACH TOWER * 125.4 (CTAF) 0	GND CON 121.9	UNICOM 122.95
-----------------------	-------------------------------------	--	-------------------------	-------------------------



CATEGORY	A	B	C	D
LPV DA	296-3/4	279 (300-3/4)		NA
LNAV/VNAV DA	399-1	382 (400-1)		NA
LNAV MDA	480-1	463 (500-1)		NA
C CIRCLING	660-1	641 (700-1)		NA



SE-3, 22 FEB 2024 to 21 MAR 2024

SE-3, 22 FEB 2024 to 21 MAR 2024

WAAS CH 70500 W 24A	APP CRS 240°	Rwy Idg TDZE Apt Elev	4001 18 19
---	------------------------	-----------------------------	---------------------------------------

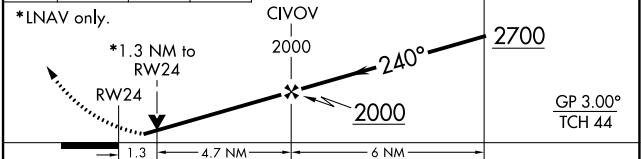
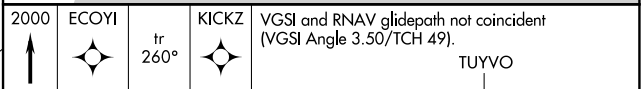
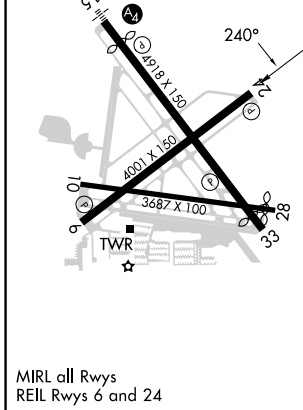
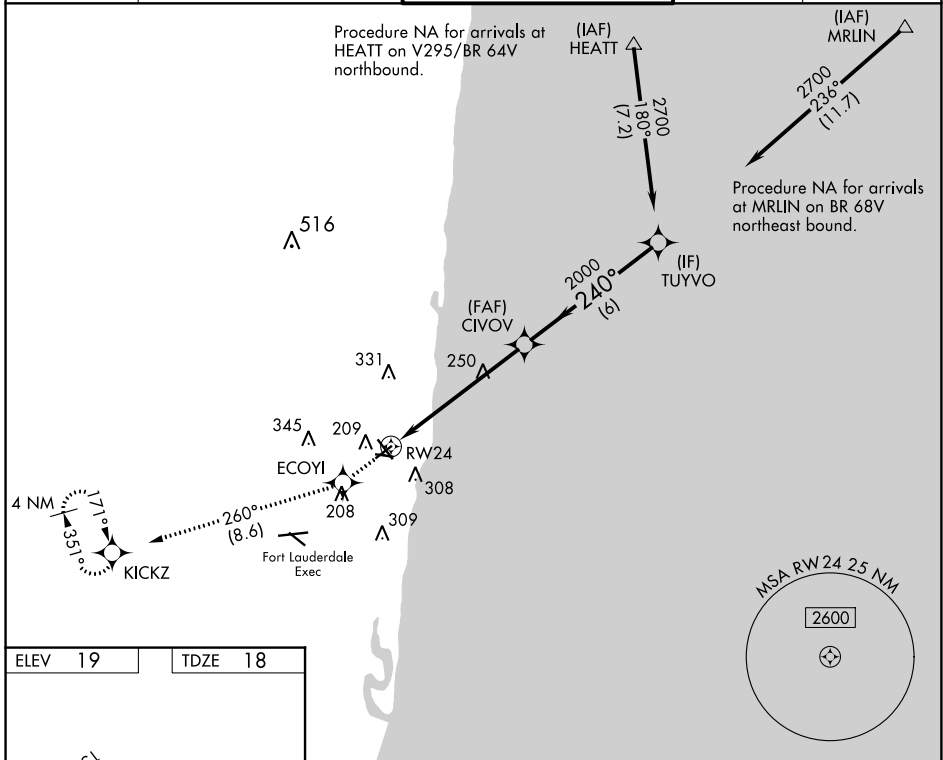
RNAV (GPS) RWY 24

POMPANO BEACH AIRPARK (PMP)

⚠ DME/DME RNP-0.3 NA. When local altimeter setting not received, use Fort Lauderdale Exec altimeter setting. Helicopter visibility reduction below 3/4 SM NA.

⚠ MISSED APPROACH: Climb to 2000 direct ECOYI and on track 260° to KICKZ and hold.

ATIS 120.55	MIAMI APP CON 119.7 306.3	POMPANO BEACH TOWER * 125.4 (CTAF) 0	GND CON 121.9	UNICOM 122.95
-----------------------	-------------------------------------	---	-------------------------	-------------------------



CATEGORY	A	B	C	D
LPV DA	319-1	301 (300-1)		NA
LNAV MDA	500-1	482 (500-1)		NA
C CIRCLING	660-1	641 (700-1)		NA

SE-3, 22 FEB 2024 to 21 MAR 2024

SE-3, 22 FEB 2024 to 21 MAR 2024

WAAS CH 40300 W33A	APP CRS 330°	Rwy Idg TDZE Apt Elev	4578 15 19
--	------------------------	-----------------------------	---------------------------------------

RNAV (GPS) RWY 33

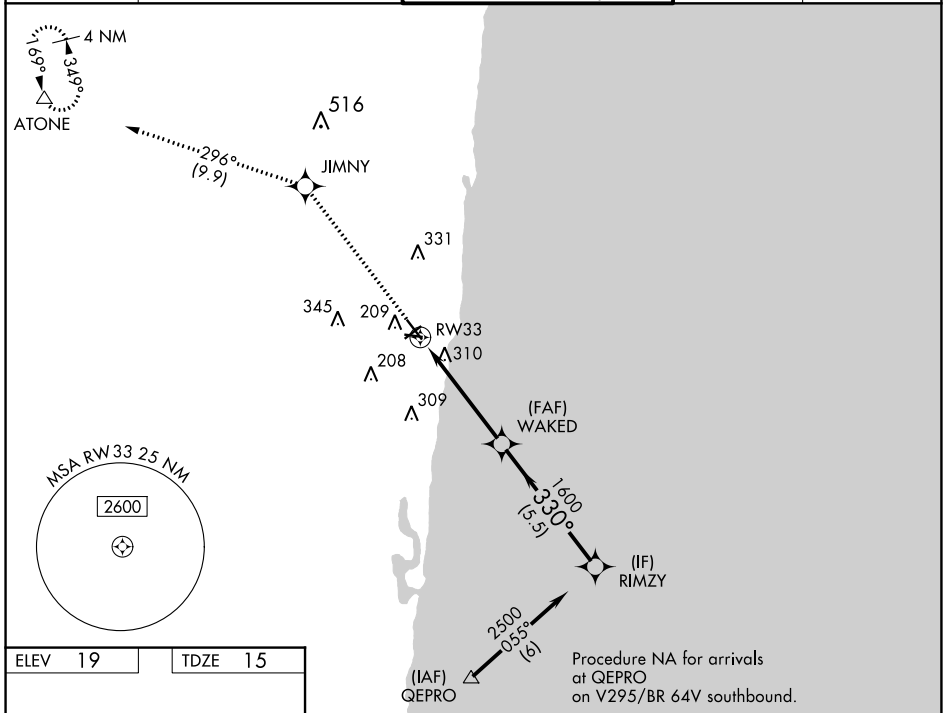
POMPANO BEACH AIRPARK (PMP)

RNP APCH.

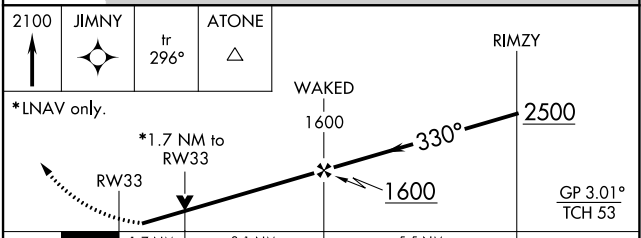
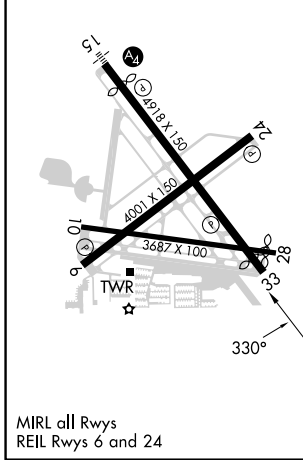
▼ Circling Rwy 15 NA at night. Rwy 33 helicopter visibility reduction below 3/4 SM NA.
▲ For uncompensated Baro-VNAV systems, LNAV/VNAV NA below 0°C or above 54°C.
 When local altimeter setting not received, use Fort Lauderdale Exec altimeter setting.

MISSED APPROACH: Climb to 2100 direct JIMNY and on track 296° to ATONE and hold.

ATIS 120.55	MIAMI APP CON 119.7 306.3	POMPANO BEACH TOWER * 125.4 (CTAF) 0	GND CON 121.9	UNICOM 122.95
-----------------------	-------------------------------------	---	-------------------------	-------------------------



ELEV 19	TDZE 15
---------	---------



CATEGORY	A	B	C	D
LPV DA	265-3/4	250 (300-3/4)		NA
LNAV/VNAV DA	700-2 1/2	685 (700-2 1/2)		NA
LNAV MDA	620-1	605 (700-1)		NA
C CIRCLING	660-1	641 (700-1)		NA

SE-3, 22 FEB 2024 to 21 MAR 2024

SE-3, 22 FEB 2024 to 21 MAR 2024

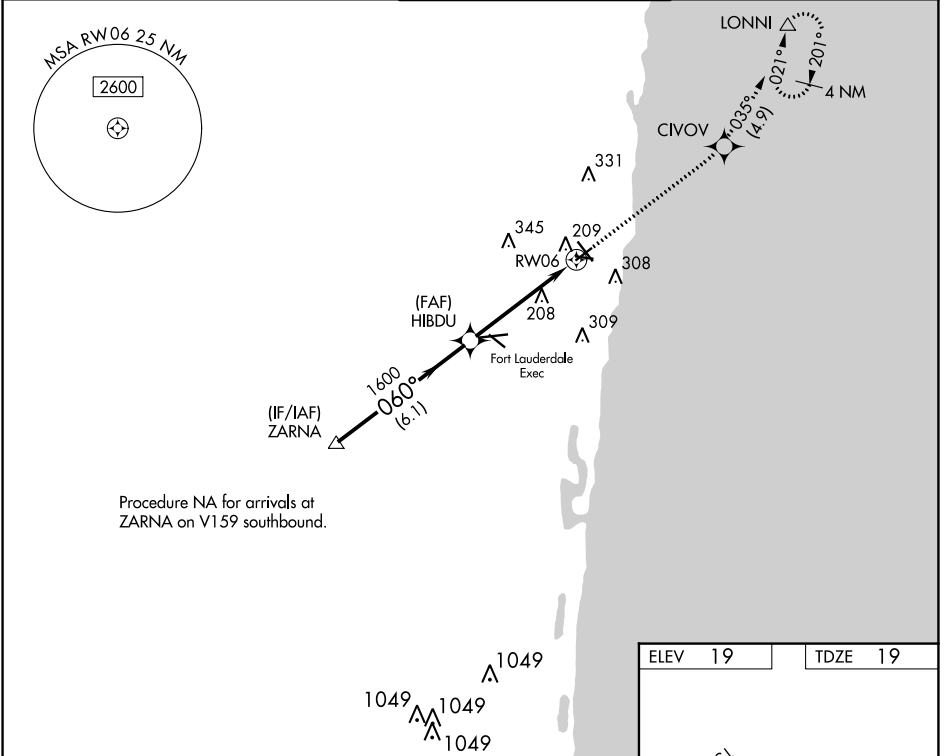
WAAS CH 56603 W06A	APP CRS 060°	Rwy Idg TDZE Apt Elev	4001 19 19
--	------------------------	-----------------------------	---------------------------------------

RNAV (GPS) RWY 6

POMPANO BEACH AIRPARK (PMP)

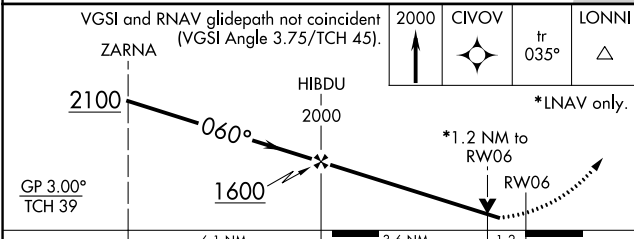
⚠	DME/DME RNP-0.3 NA. When local altimeter setting not received, use Fort Lauderdale Exec altimeter setting. Helicopter visibility reduction below ¾ SM NA.	MISSED APPROACH: Climb to 2000 direct CIVOVO and on track 035° to LONNI and hold.
----------	---	---

ATIS 120.55	MIAMI APP CON 119.7 306.3	POMPANO BEACH TOWER * 125.4 (CTAF) 0	GND CON 121.9	UNICOM 122.95
-----------------------	-------------------------------------	--	-------------------------	-------------------------

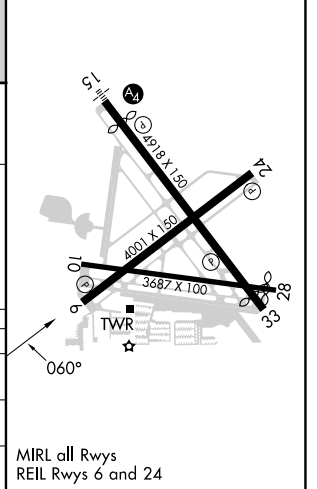


Procedure NA for arrivals at ZARNA on V159 southbound.

ELEV 19	TDZE 19
---------	---------



CATEGORY	A	B	C	D
LPV DA	348-1¼	329 (400-1¼)		NA
LNAV MDA	480-1	461 (500-1)		NA
C CIRCLING	660-1	641 (700-1)		NA



MIRL all Rwy's
REIL Rwy's 6 and 24