





LOC I-PMD <b>110.7</b>	APP CRS <b>254°</b>	Rwy Idg TDZE Apt Elev	<b>12002</b> <b>2503</b> <b>2543</b>
---------------------------	------------------------	-----------------------------	--

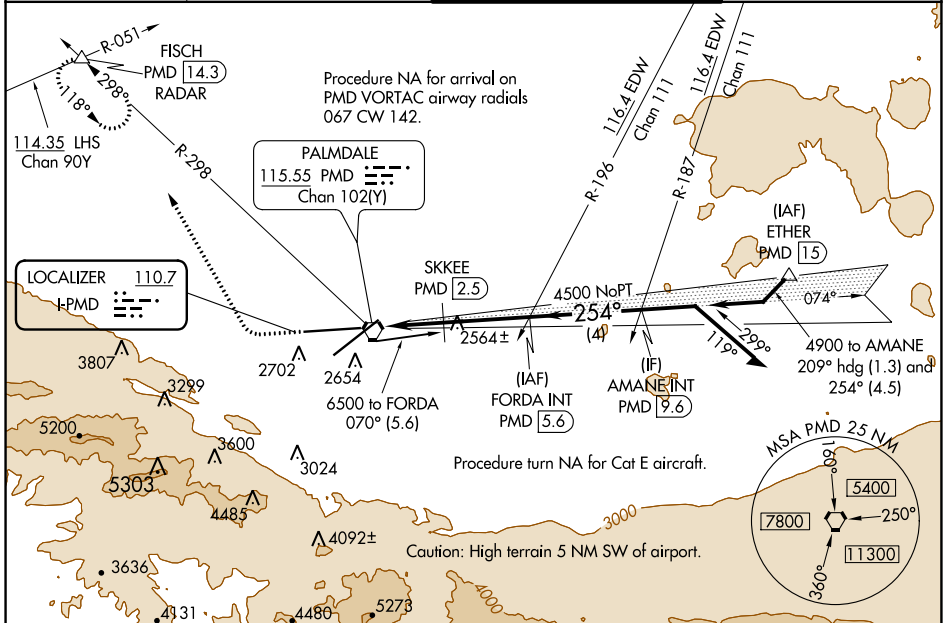
# ILS or LOC RWY 25

PALMDALE USAF PLANT 42 (PMD)

**▽** DME from PMD VORTAC.  
**△** Simultaneous reception of I-PMD and PMD DME required.  
 Circling NA for Cats C, D, and E south of Rwy 4 and 25.

MISSED APPROACH: Climb to 3000 then climbing right turn to 6700 on heading 318° and on PMD VORTAC R-298 to FISCH INT/PMD 14.3 DME/RADAR and hold, continue climb-in-hold to 6700.

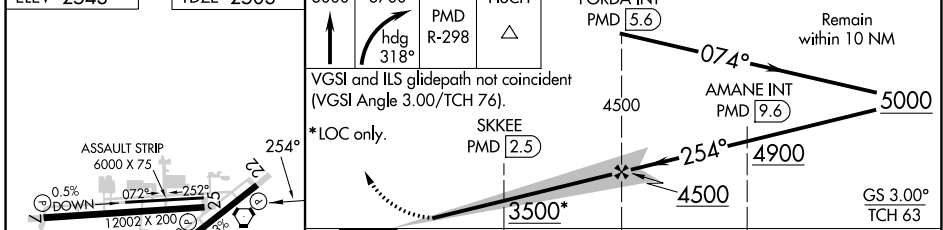
ATIS <b>118.275</b>	JOSHUA APP CON <b>124.55 363.0</b>	<b>PALMDALE TOWER *</b> <b>123.7 (CTAF) 0 317.6</b>	GND CON <b>121.9 317.6</b>
------------------------	---------------------------------------	--	-------------------------------



SW-3, 22 FEB 2024 to 21 MAR 2024

SW-3, 22 FEB 2024 to 21 MAR 2024

ELEV 2543	TDZE 2503	3000	6700	FISCH	FORDA INT
-----------	-----------	------	------	-------	-----------



CATEGORY	S-ILS 25				
	A	B	C	D	E
S-ILS 25	2703-¾ 200 (200-¾)				
S-LOC 25	3500-1¼ 997 (1000-1¼)	3500-1½ 997 (1000-1½)	3500-3 997 (1000-3)		
<b>C</b> CIRCLING	3500-1¼ 957 (1000-1¼)	3500-1½ 957 (1000-1½)	3500-3 957 (1000-3)	3740-3 1197 (1200-3)	3760-3 217 (1300-3)
SKKEE FIX MINIMUMS (DME REQUIRED)					
S-LOC 25	2820-1 317 (300-1)		2820-¾ 317 (300-¾)		
<b>C</b> CIRCLING	3020-1 477 (500-1)	3060-1 517 (600-1)	3140-1½ 597 (600-1½)	3740-3 1197 (1200-3)	3760-3 217 (1300-3)

REIL Rwy 4, 7, 22 and 25  
 HIRL Rwy 4-22 and 7-25

FAF to MAP 6.1 NM

Knots	60	90	120	150	180
Min:Sec	6:06	4:04	3:03	2:26	2:02

WAAS CH <b>45741</b> <b>W22A</b>	APP CRS <b>223°</b>	Rwy ldg TDZE Apt Elev	<b>12001</b> <b>2498</b> <b>2543</b>
--	------------------------	-----------------------------	--

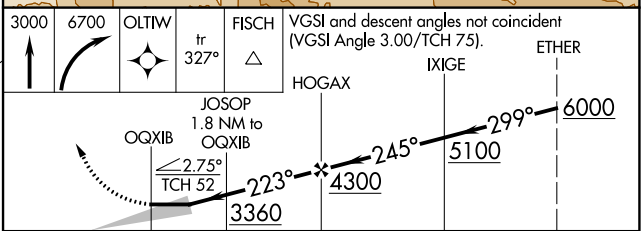
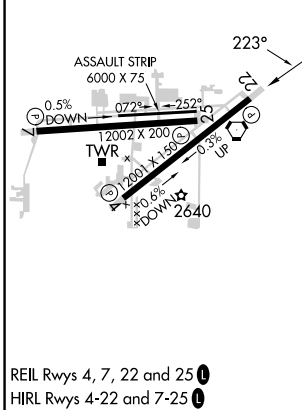
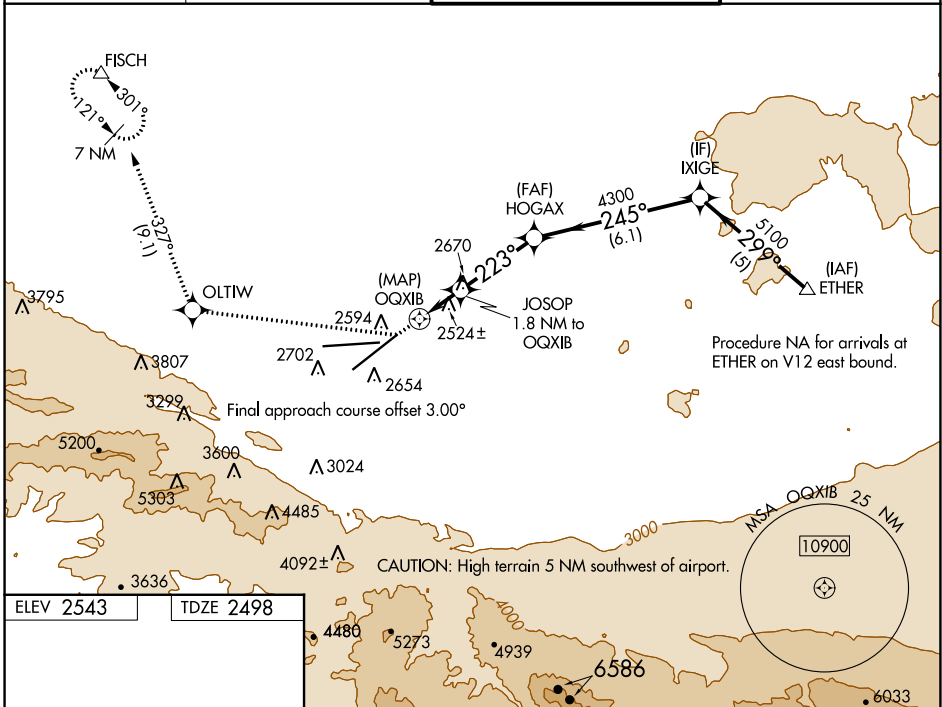
# RNAV (GPS) RWY 22

PALMDALE USAF PLANT 42 (PMD)

**⚠** Circling NA for Cats C and D south of Rwy 4 and 25.  
DME/DME RNP-0.3 NA.

**MISSED APPROACH:** Climb to 3000 then climbing right turn to 6700 direct OLTW and on track 327° to FISCH and hold, continue climb-in-hold to 6700.

ATIS <b>118.275</b>	JOSHUA APP CON <b>124.55 363.0</b>	<b>PALMDALE TOWER *</b> <b>123.7 (CTAF) 0 317.6</b>	GND CON <b>121.9 317.6</b>
------------------------	---------------------------------------	--	-------------------------------



CATEGORY	A	B	C	D
LP MDA	2780-1¼ 282 (300-1¼)			
LNAV MDA	2860-1¼ 362 (400-1¼)			
<b>C</b> CIRCLING	3020-1¼ 477 (500-1¼)	3060-1¼ 517 (600-1¼)	3140-1½ 597 (600-1½)	3740-3 1197 (1200-3)

SW-3, 22 FEB 2024 to 21 MAR 2024

SW-3, 22 FEB 2024 to 21 MAR 2024

WAAS CH <b>86520</b> <b>W25A</b>	APP CRS <b>254°</b>	Rwy Idg TDZE Apt Elev	<b>12002</b> <b>2503</b> <b>2543</b>
--	------------------------	-----------------------------	--

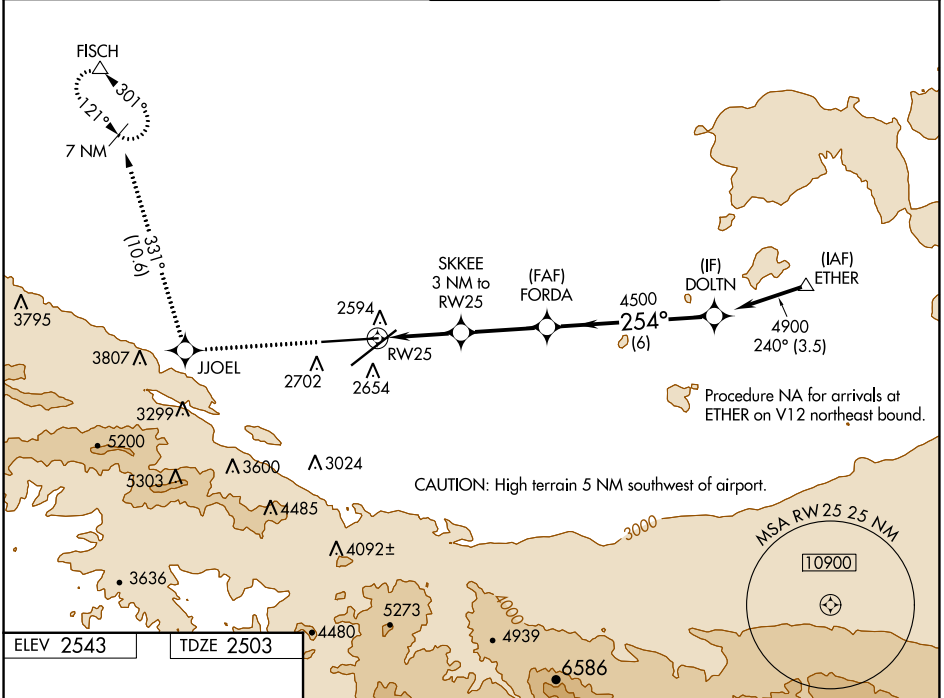
# RNAV (GPS) RWY 25

PALMDALE USAF PLANT 42 (PMD)

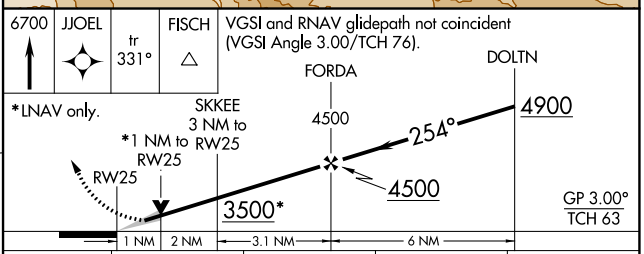
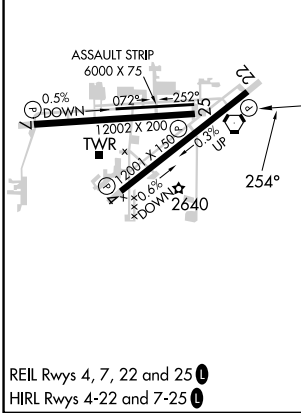
**⚠** For uncompensated Baro-VNAV systems, LNAV/VNAV NA below -6°C (22°F) or above 50°C (123°F). Circling NA for Cats C and D south of Rwy 4 and 25.  
DME/DME RNP-0.3 NA.

**MISSED APPROACH:** Climb 6700 direct JJOEL and on track 331° direct FISCH and hold, continue climb-in-hold to 6700.

ATIS <b>118.275</b>	JOSHUA APP CON <b>124.55 363.0</b>	PALMDALE TOWER * <b>123.7 (CTAF) 317.6</b>	GND CON <b>121.9 317.6</b>
------------------------	---------------------------------------	---	-------------------------------



ELEV 2543	TDZE 2503
-----------	-----------



CATEGORY	A	B	C	D
LPV DA		2703-3/4	200 (200-3/4)	
LNAV/VNAV DA		2806-1	303 (300-1)	
LNAV MDA		2880-1	377 (400-1)	
<b>CIRCLING</b>	3020-1 477 (500-1)	3060-1 517 (600-1)	3140-1 1/2 597 (600-1 1/2)	3740-3 1197 (1200-3)

SW-3, 22 FEB 2024 to 21 MAR 2024

SW-3, 22 FEB 2024 to 21 MAR 2024

WAAS CH <b>53441</b> <b>W07A</b>	APP CRS <b>077°</b>	Rwy ldg <b>12002</b> TDZE <b>2540</b> Apt Elev <b>2543</b>
--	------------------------	--

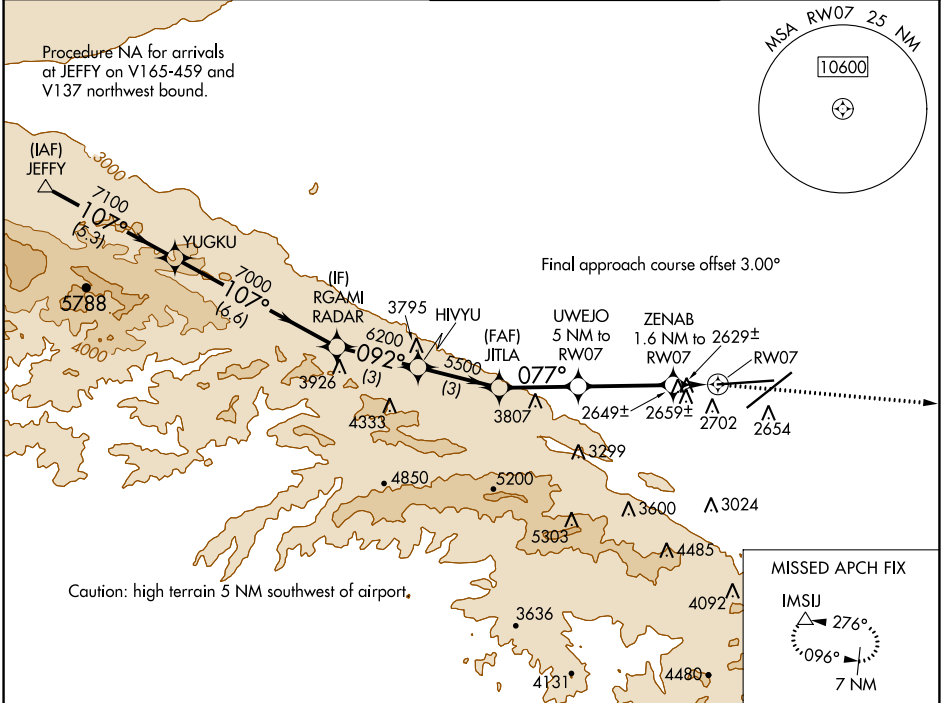
# RNAV (GPS) RWY 7

PALMDALE USAF PLANT 42 (PMD)

RNP APCH.  
 Circling NA for Cats C and D south of Rws 4 and 25.

MISSED APPROACH: Climbing right turn to 7000 direct IMSJ and hold.

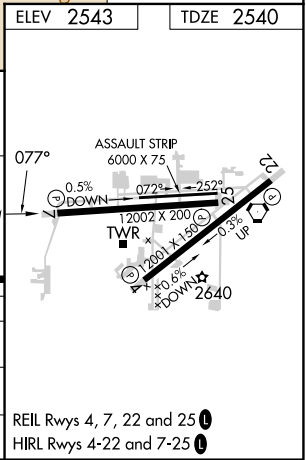
ATIS <b>118.275</b>	JOSHUA APP CON <b>124.55 363.0</b>	PALMDALE TOWER * <b>123.7 (CTAF) 0 317.6</b>	GND CON <b>121.9 317.6</b>
------------------------	---------------------------------------	---	-------------------------------



SW-3, 22 FEB 2024 to 21 MAR 2024

SW-3, 22 FEB 2024 to 21 MAR 2024

	ELEV 2543	TDZE 2540					
JEFFY	YUGKU	RGAMI	HIVYU	JITLA	UWEJO	ZENAB	IMSJ
8000	7100	7000	6200	5500	4440	3180	7000
	107°	107°	092°	077°	077°	077°	077°
	5.3 NM	6.6 NM	3 NM	3 NM	2.8 NM	3.4 NM	0.8 NM
						3.50° TCH 50	
CATEGORY	A	B	C	D			
LP MDA	2880-1		340 (400-1)				
LNAV MDA	2920-1		380 (400-1)				
CIRCLING	3020-1 477 (500-1)	3060-1 517 (600-1)	3140-1½ 597 (600-1½)	3740-3 1197 (1200-3)			



VORTAC PMD <b>115.55</b> Chan <b>102(Y)</b>	APP CRS <b>265°</b>	Rwy ldg <b>12002</b> TDZE <b>2503</b> Apt Elev <b>2543</b>
---	------------------------	--

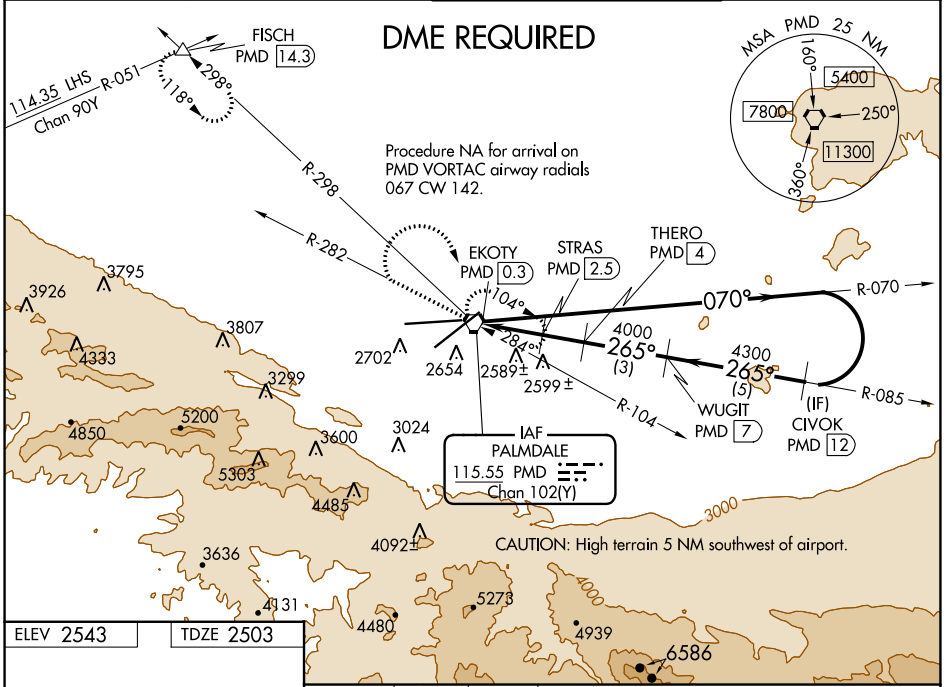
# VOR or TACAN RWY 25

PALMDALE USAF PLANT 42 (PMD)

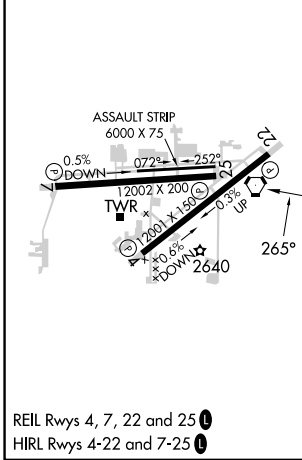
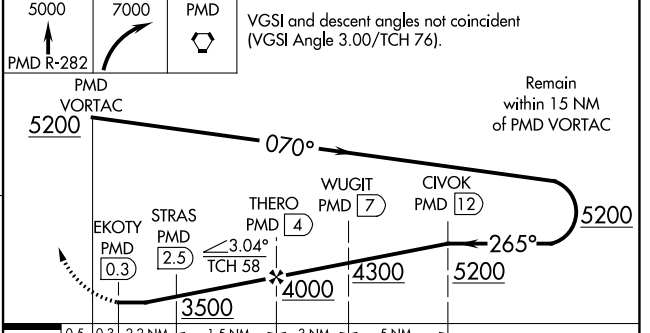
**▼** Circling NA for Cats C, D, and E south of Rws 4 and 25.  
**▲** DME required.

MISSED APPROACH: Climb to 5000 on PMD VORTAC R-282 then climbing right turn to 7000 direct PMD VORTAC and hold (TACAN aircraft climbing right turn to 6700 on PMD VORTAC. R-298 to FISCH INT/ 14.3 DME and hold SE left turn 298° inbound, continue climb-in-hold to 6700).

ATIS <b>118.275</b>	JOSHUA APP CON <b>124.55 363.0</b>	PALMDALE TOWER ★ <b>123.7 (CTAF) 0 317.6</b>	GND CON <b>121.9 317.6</b>
------------------------	---------------------------------------	---	-------------------------------



ELEV <b>2543</b>	TDZE <b>2503</b>
------------------	------------------



CATEGORY	A	B	C	D	E
S-25	2840-1 337 (300-1)				
<b>CIRCLING</b>	3020-1 477 (500-1)	3060-1 517 (600-1)	3140-1½ 597 (600-1½)	3740-3 1197 (1200-3)	3760-3 1217 (1300-3)

SW-3, 22 FEB 2024 to 21 MAR 2024

SW-3, 22 FEB 2024 to 21 MAR 2024