

WAAS CH 53708 W13A	APP CRS 130°	Rwy ldg 8001 TDZE 18 Apt Elev 19
----------------------------------------	------------------------	-------------------------------------------------------------

RNAV (GPS) RWY 13

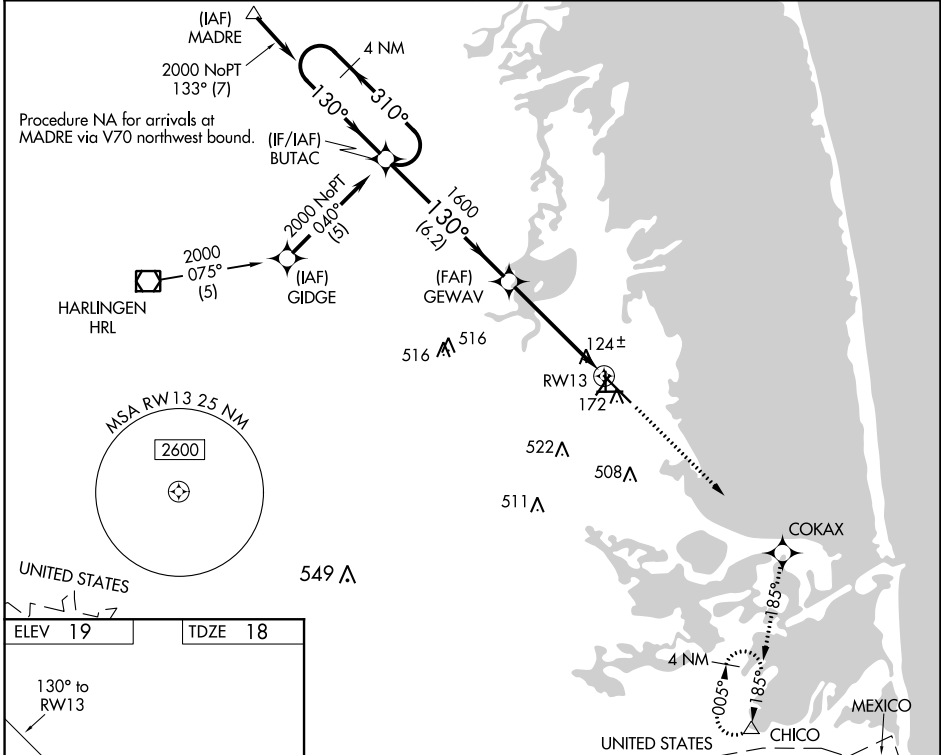
PORT ISABEL-CAMERON COUNTY (PIL)

RNP APCH

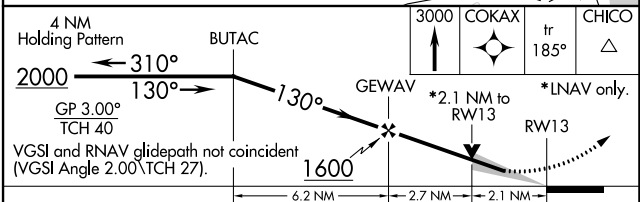
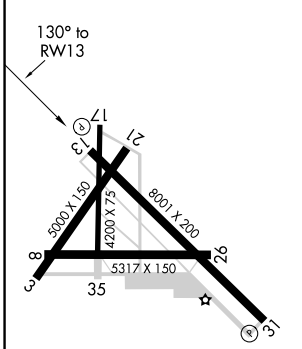
Baro-VNAV NA when using Brownsville altimeter setting. For uncompensated Baro-VNAV systems, LNAV/VNAV NA below -15°C or above 54°C. VDP NA when using Brownsville altimeter setting. When local altimeter setting not received, use Brownsville altimeter setting and increase all DA 38 feet and all MDA 40 feet, increase LPV all Cats, LNAV Cat C, and Circling Cat C visibility ¼ mile. Circling Rwy 3, 8, 17, 21, 26, 35 NA at night.

MISSED APPROACH:
Climb to 3000 direct COKAX and via 185° track to CHICO and hold.

ASOS 118.525	VALLEY APP CON 119.5 257.6	CLNC DEL 119.2	UNICOM 122.8 (CTAF)
------------------------	--------------------------------------	--------------------------	-------------------------------



ELEV 19	TDZE 18
---------	---------



CATEGORY	A	B	C	D
LPV DA	376-1¼	358 (400-1¼)		NA
LNAV/VNAV DA	424-1½	406 (500-1½)		NA
LNAV MDA	480-1	462 (500-1)	480-1¼ 462 (500-1¼)	NA
<input checked="" type="checkbox"/> CIRCLING	540-1 521 (600-1)	620-1 601 (700-1)	840-2½ 821 (900-2½)	NA

REIL Rws 13 and 31
MIRL Rwy 13-31

SC-3, 22 FEB 2024 to 21 MAR 2024

SC-3, 22 FEB 2024 to 21 MAR 2024

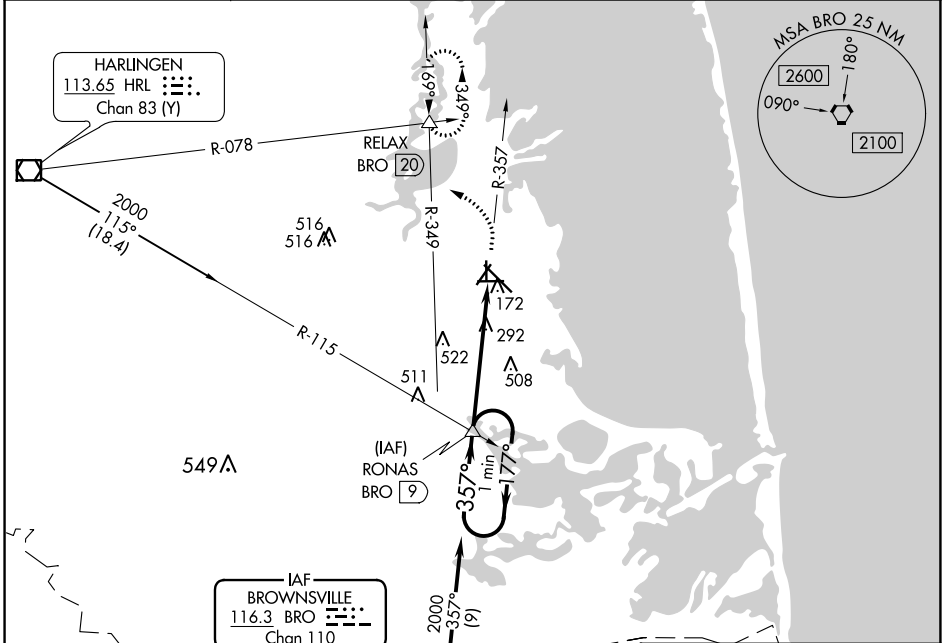
VORTAC BRO 116.3 Chan 110	APP CRS 357°	Rwy Idg TDZE Apt Elev	N/A N/A 19
----------------------------------------	------------------------	-----------------------------	---------------------------------------

VOR-A

PORT ISABEL-CAMERON COUNTY (PIL)

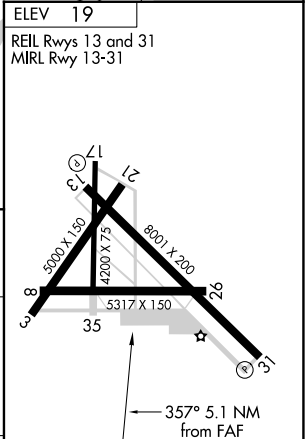
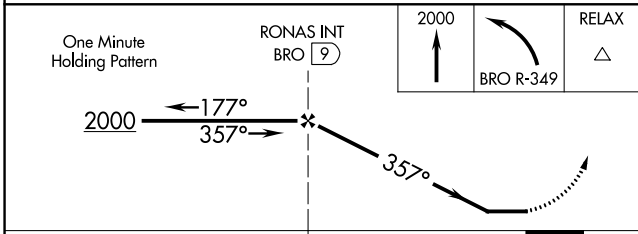
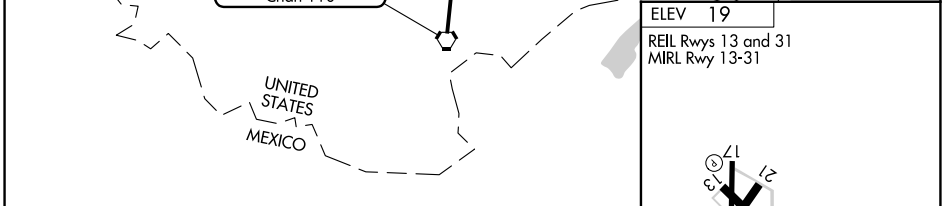
▼ When local altimeter setting not received, use Brownsville altimeter setting and increase all MDA 40 feet and increase Cat C visibility ¼ mile. Circling Rwy 3, 8, 17, 21, 26, 35 NA at night.
▲ NA MISSED APPROACH: Climb to 2000 then turn left via BRO R-349 to RELAX INT/BRO 20 DME and hold.

ASOS 118.525	VALLEY APP CON 119.5 257.6	CINC DEL 119.2	UNICOM 122.8 (CTAF)
------------------------	--------------------------------------	--------------------------	-------------------------------



SC-3, 22 FEB 2024 to 21 MAR 2024

SC-3, 22 FEB 2024 to 21 MAR 2024



CATEGORY	A	B	C	D	FAF to MAP 5.1 NM					
☐ CIRCLING	780-1	761 (800-1)	840-2½ 821 (900-2½)	NA	Knots	60	90	120	150	180
					Min:Sec	5:06	3:24	2:33	2:02	1:42

VOR-A