

WAAS CH 90422 W10A	APP CRS 099°	Rwy Idg TDZE 153 Apt Elev 153	3750
--	------------------------	---	-------------

RNAV (GPS) RWY 10

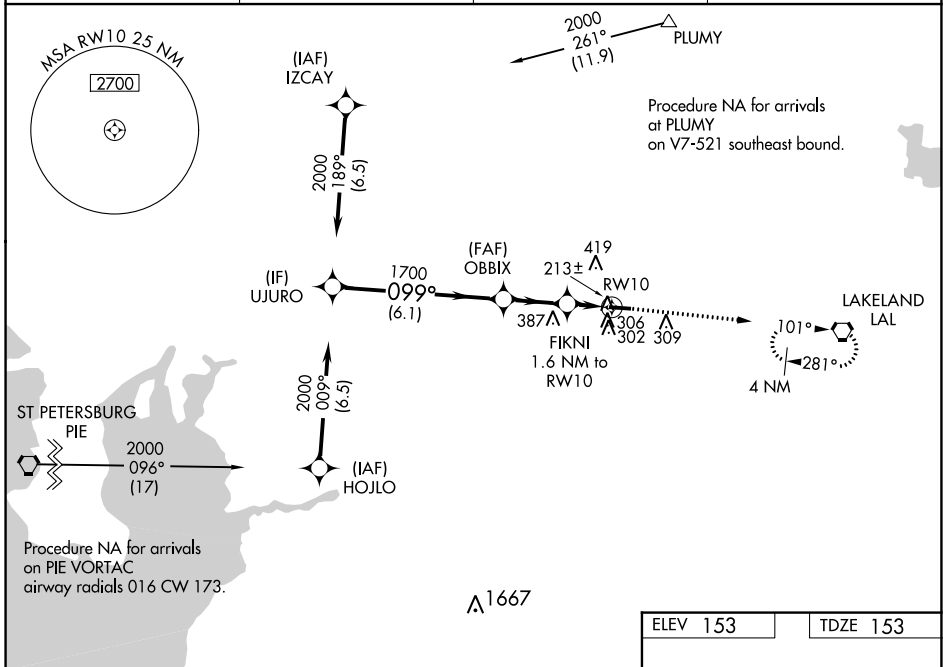
PLANT CITY (PCM)

RNP APCH.

⚠ Circling Rwy 28 NA at night. Baro-VNAV and VDP NA when using Lakeland altimeter setting. Rwy 10 helicopter visibility reduction below $\frac{3}{4}$ SM NA. For uncompensated Baro-VNAV systems, LNAV/VNAV NA below -15°C or above 54°C. When local altimeter setting not received, use Lakeland altimeter setting and increase all DA/MDA 20 feet.

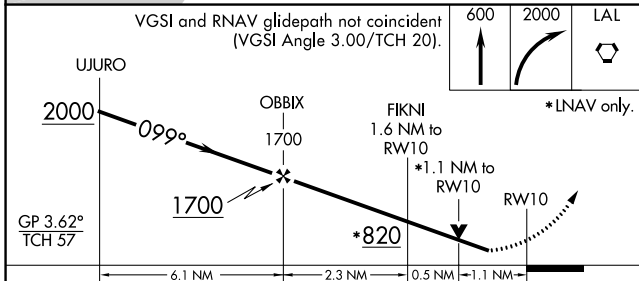
MISSED APPROACH: Climb to 600 then climbing right turn to 2000 direct LAL VORTAC and hold.

AWOS-3 120.025	TAMPA APP CON 120.65 290.3	CLNC DEL 121.725 (GCO)	UNICOM 123.05 (CTAF) 📻
--------------------------	--------------------------------------	----------------------------------	---



SE-3, 22 FEB 2024 to 21 MAR 2024

SE-3, 22 FEB 2024 to 21 MAR 2024



ELEV 153	TDZE 153
----------	----------

MIRL Rwy 10-28 **📻**
REIL Rws 10 and 28 **📻**

CATEGORY	A	B	C	D
LPV DA	455-1	302 (400-1)		NA
LNAV/VNAV DA	510-1	357 (400-1)		NA
LNAV MDA	520-1	367 (400-1)		NA
📻 CIRCLING	680-1 527 (600-1)	720-1 567 (600-1)		NA

WAAS CH 78136 W28A	APP CRS 279°	Rwy Idg TDZE Apt Elev	3950 153 153
--	------------------------	-----------------------------	---

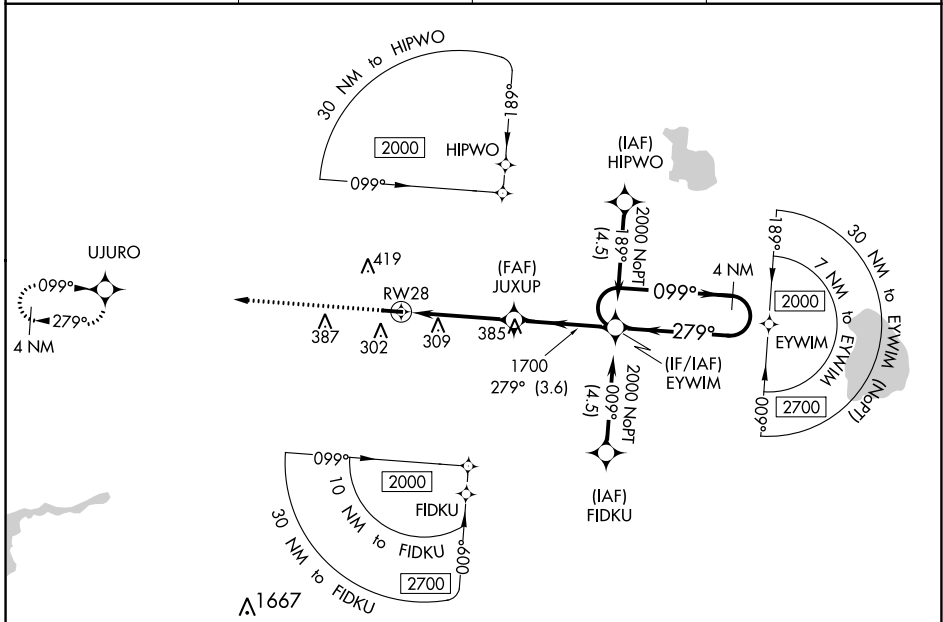
RNAV (GPS) RWY 28

PLANT CITY (PCM)

⚠ Baro-VNAV NA when using Lakeland altimeter setting. For uncompensated Baro-VNAV systems, LNAV/VNAV NA below -1.5°C (5°F) or above 54°C (130°F). DME/DME RNP-0.3 NA. Night landing: Rwy 28 NA. Helicopter visibility reduction below 1 SM NA. When local altimeter setting not received use Lakeland altimeter setting and increase all DA/MDA 20 feet.

MISSED APPROACH:
Climb to 2000 direct UJURO and hold.

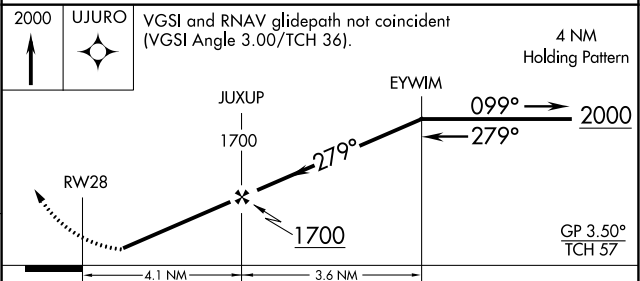
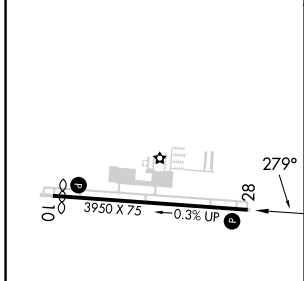
AWOS-3 120.025	TAMPA APP CON 120.65 290.3	CLNC DEL 121.725 (GCO)	UNICOM 123.05 (CTAF) 0
--------------------------	--------------------------------------	----------------------------------	----------------------------------



SE-3, 22 FEB 2024 to 21 MAR 2024

SE-3, 22 FEB 2024 to 21 MAR 2024

ELEV 153	TDZE 153
-----------------	-----------------



CATEGORY	A	B	C	D
LPV DA	414-1	261 (300-1)		NA
LNAV/VNAV DA	459-1	306 (400-1)		NA
LNAV MDA	600-1	447 (500-1)		NA
C CIRCLING	680-1 527 (600-1)	720-1 567 (600-1)		NA

VORTAC LAL 116.0 Chan 107	APP CRS 275°	Rwy Idg 3950 TDZE 154 Apt Elev 154
---	------------------------	---

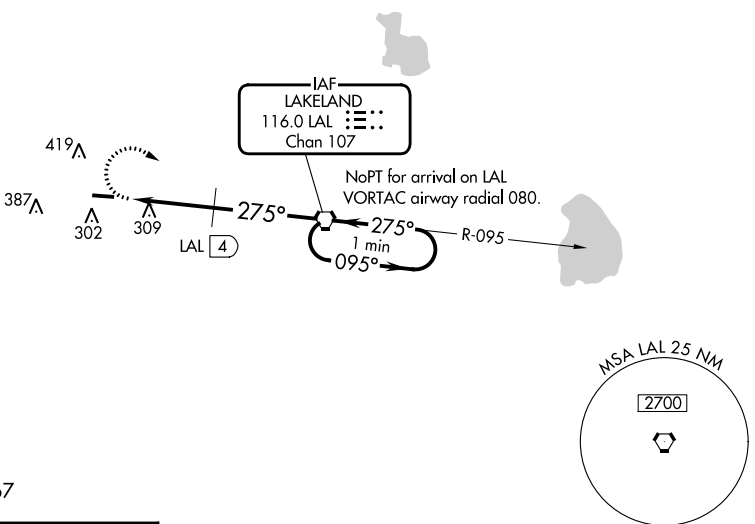
VOR RWY 28

PLANT CITY (PCM)

NA When local altimeter setting not received, use Lakeland altimeter setting and increase all MDA 20 feet. Straight-in and Circling Rwy 28 NA at night. Rwy 28 helicopter visibility reduction below 1 SM NA.

MISSED APPROACH: Climbing right turn to 2000 direct LAL VORTAC and hold.

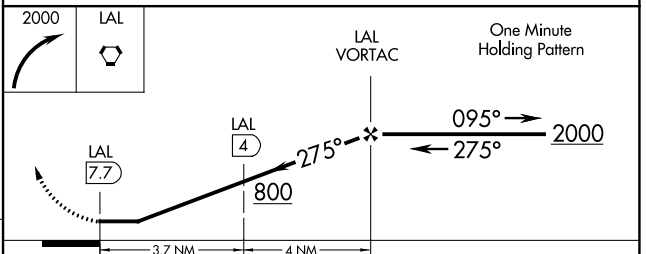
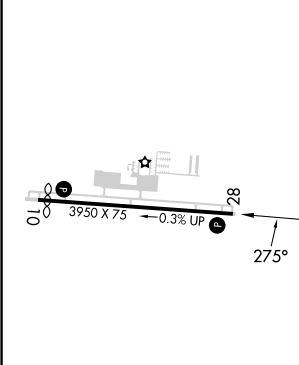
AWOS-3 120.025	TAMPA APP CON 120.65 290.3	CLNC DEL 121.725 (GCO)	UNICOM 123.05 (CTAF) 0
--------------------------	--------------------------------------	----------------------------------	----------------------------------



SE-3, 22 FEB 2024 to 21 MAR 2024

SE-3, 22 FEB 2024 to 21 MAR 2024

ELEV 154	TDZE 154
-----------------	-----------------



CATEGORY	A	B	C	D
S-28	800-1	646 (700-1)		NA
C CIRCLING	800-1	646 (700-1)		NA
DME MINIMUMS				
S-28	600-1	446 (500-1)		NA
C CIRCLING	700-1 546 (600-1)	800-1 646 (700-1)		NA

MIRL Rwy 10-28 **0**
REIL Rws 10 and 28 **0**

FAF to MAP 7.7 NM

Knots	60	90	120	150	180
Min:Sec	7:42	5:08	3:51	3:05	2:34