

APP CRS	Rwy Idg	<b>5799</b>
<b>169°</b>	TDZE	<b>889</b>
	Apt Elev	<b>892</b>

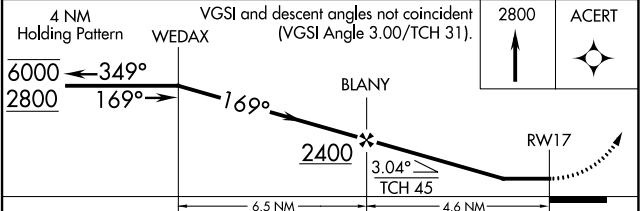
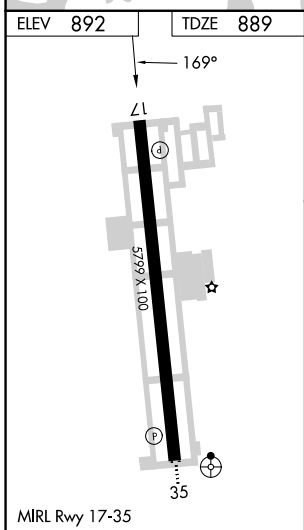
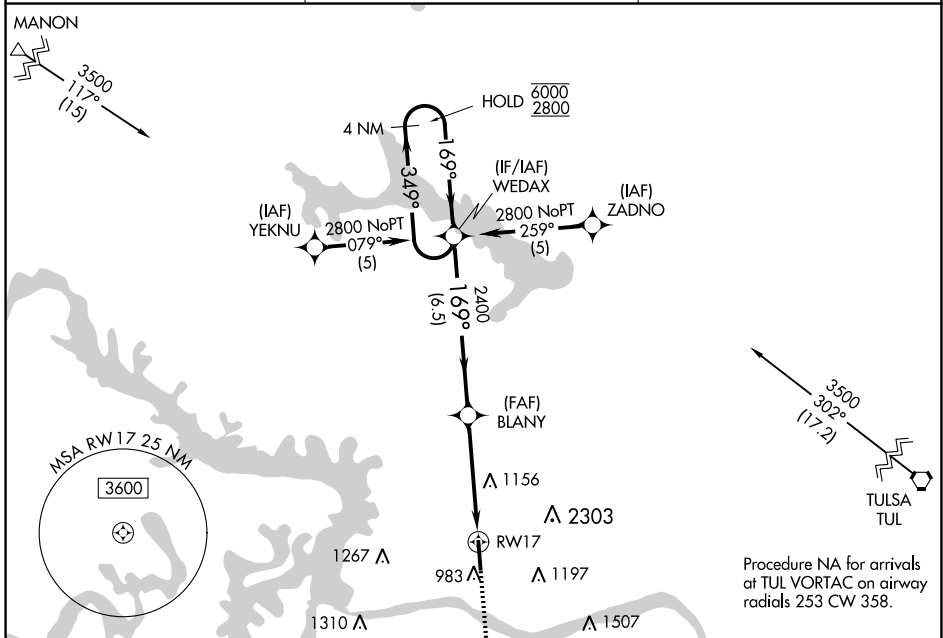
# RNAV (GPS) RWY 17

WILLIAM R POGUE MUNI (OWP)

RNP APCH. MISSED APPROACH: Climb to 2800 direct ACERT and hold.

▼ Rwy 17 helicopter visibility reduction below 1 SM NA. Procedure NA at night. Circling NA for Cat C east of Rwy 17-35.

AWOS-3T <b>118.325</b>	TULSA APP CON <b>124.0 338.3</b>	UNICOM <b>122.7 (CTAF)</b>
---------------------------	-------------------------------------	-------------------------------



CATEGORY	A	B	C	D
LNVA MDA	1420-1	531 (600-1)	1420-1½ 531 (600-1½)	NA
<input checked="" type="checkbox"/> CIRCLING	1440-1	548 (600-1)	1440-1½ 548 (600-1½)	NA

SC-1, 22 FEB 2024 to 21 MAR 2024

SC-1, 22 FEB 2024 to 21 MAR 2024

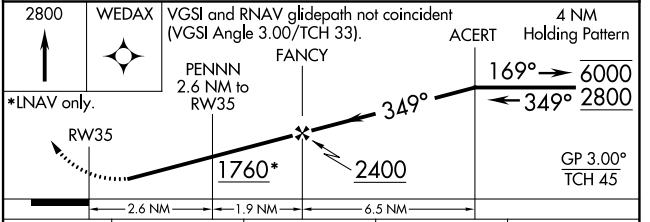
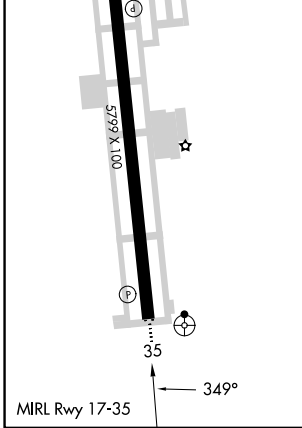
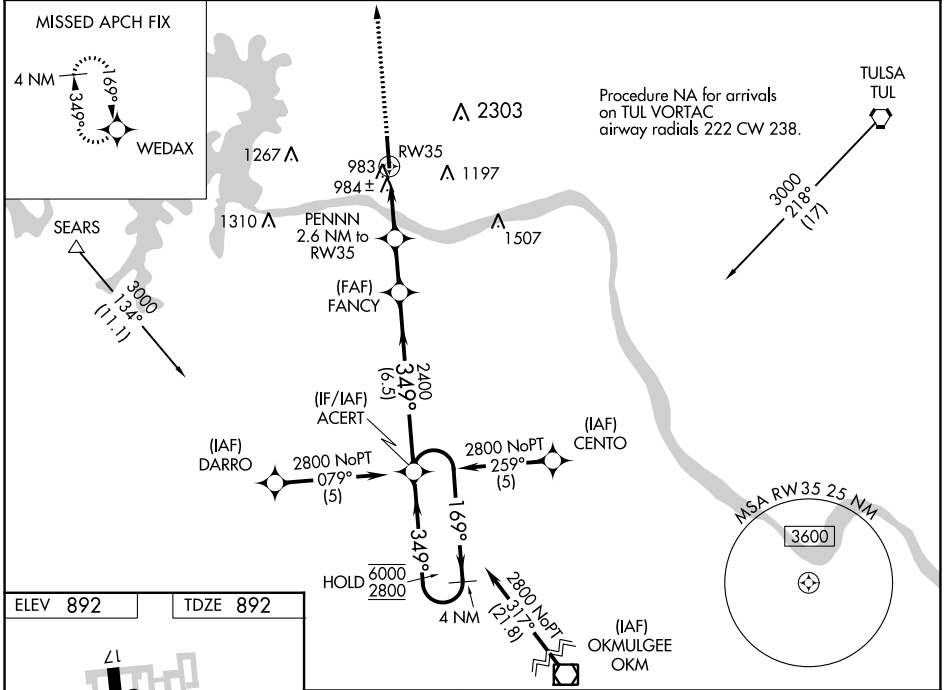
WAAS CH <b>57912</b> <b>W35A</b>	APP CRS <b>349°</b>	Rwy Idg TDZE Apt Elev	<b>5799</b> <b>892</b> <b>892</b>
--	------------------------	-----------------------------	---

# RNAV (GPS) RWY 35

WILLIAM R POGUE MUNI (OWP)

RNP APCH. ▼ Rwy 35 helicopter visibility reduction below 1 SM NA. For uncompensated Baro-VNAV systems, LNAV/VNAV NA below -16°C or above 54°C. Procedure NA at night. Circling NA for Cat C east of Rwy 17-35. Inop table does not apply.	ODALS 	MISSED APPROACH: Climb to 2800 direct WEDAX and hold.
--	-----------	---

AWOS-3T <b>118.325</b>	TULSA APP CON <b>124.0 338.3</b>	UNICOM <b>122.7 (CTAF)</b>
---------------------------	-------------------------------------	-------------------------------



CATEGORY	A	B	C	D
LPV DA	1202-1	310 (400-1)		NA
LNAV/VNAV DA	1317-1½	425 (500-1½)		NA
LNAV MDA	1240-1	348 (400-1)		NA
CIRCLING	1440-1	548 (600-1)	1440-1½ 548 (600-1½)	NA

SC-1, 22 FEB 2024 to 21 MAR 2024

SC-1, 22 FEB 2024 to 21 MAR 2024