

WAAS CH <b>77740</b> <b>W15A</b>	APP CRS <b>148°</b>	Rwy Idg TDZE Apt Elev	<b>4000</b> <b>270</b> <b>270</b>
--	------------------------	-----------------------------	---

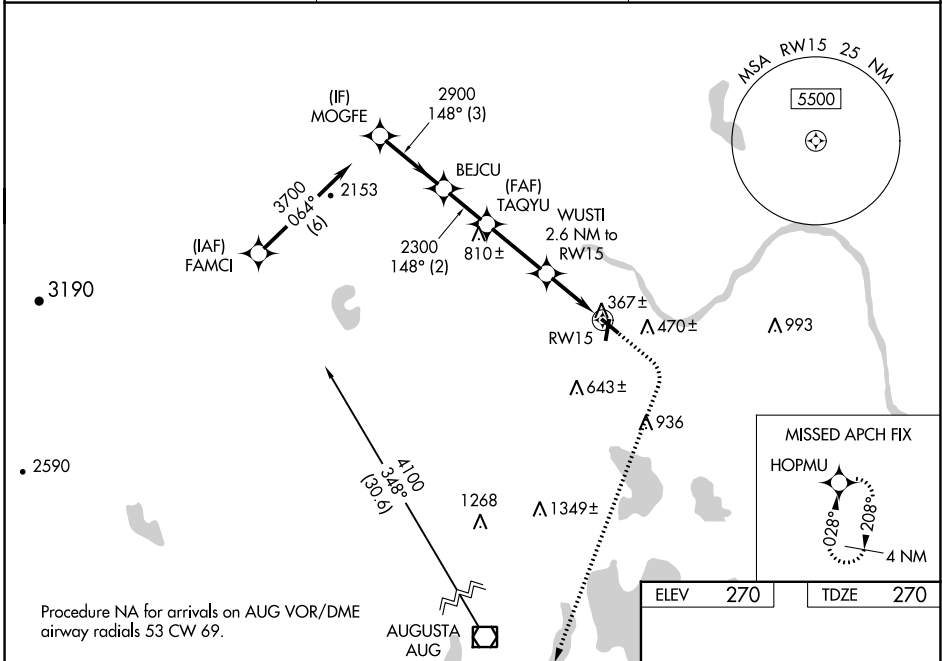
# RNAV (GPS) RWY 15

CENTRAL MAINE/NORRIDGEWOCK (OWK)

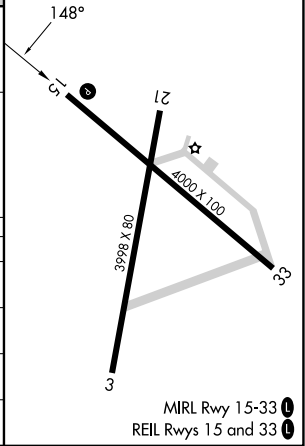
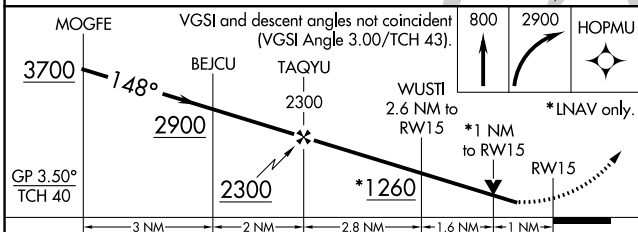
**▽** For uncompensated Baro-VNAV systems, LNAV/VNAV NA below -15°C (5°F) or above 54°C (130°F). Baro-VNAV and VDP NA when using Augusta State altimeter setting.  
**△ NA** Rwy 15 helicopter visibility reduction below 3/4 SM NA. DME/DME RNP-0.3 NA.  
 When local altimeter setting not received, use Augusta State altimeter setting: increase LPV DA to 607 feet, LNAV/VNAV DA 659 feet and LNAV/VNAV visibility all Cats 1/2 SM. Increase all MDA 80 feet and LNAV Cat C visibility 1/4 SM and Circling Cat C visibility 1/2 SM. Circling Rwy 3, 21, 33 NA at night.

**MISSED APPROACH:**  
 Climb to 800 then climbing right turn to 2900 direct HOPMU and hold.

AWOS-AV <b>123.075</b>	PORTLAND APP CON ★ <b>128.35 299.2</b>	UNICOM <b>122.8 (CTAF) 0</b>
---------------------------	---	---------------------------------



ELEV 270	TDZE 270
----------	----------



CATEGORY	A	B	C	D
LPV DA	540-1	270 (300-1)		NA
LNAV/VNAV DA	592-1	322 (400-1)		NA
LNAV MDA	680-1	410 (500-1)	680-1 1/8 410 (500-1 1/8)	NA
<b>C</b> CIRCLING	800-1 530 (600-1)	960-1 690 (700-1)	1080-2 1/4 810 (900-2 1/4)	NA

NE-1, 22 FEB 2024 to 21 MAR 2024

NE-1, 22 FEB 2024 to 21 MAR 2024

MIRL Rwy 15-33  
 REIL Rws 15 and 33

APP CRS	Rwy Idg	<b>3998</b>
<b>028°</b>	TDZE	<b>268</b>
	Apt Elev	<b>270</b>

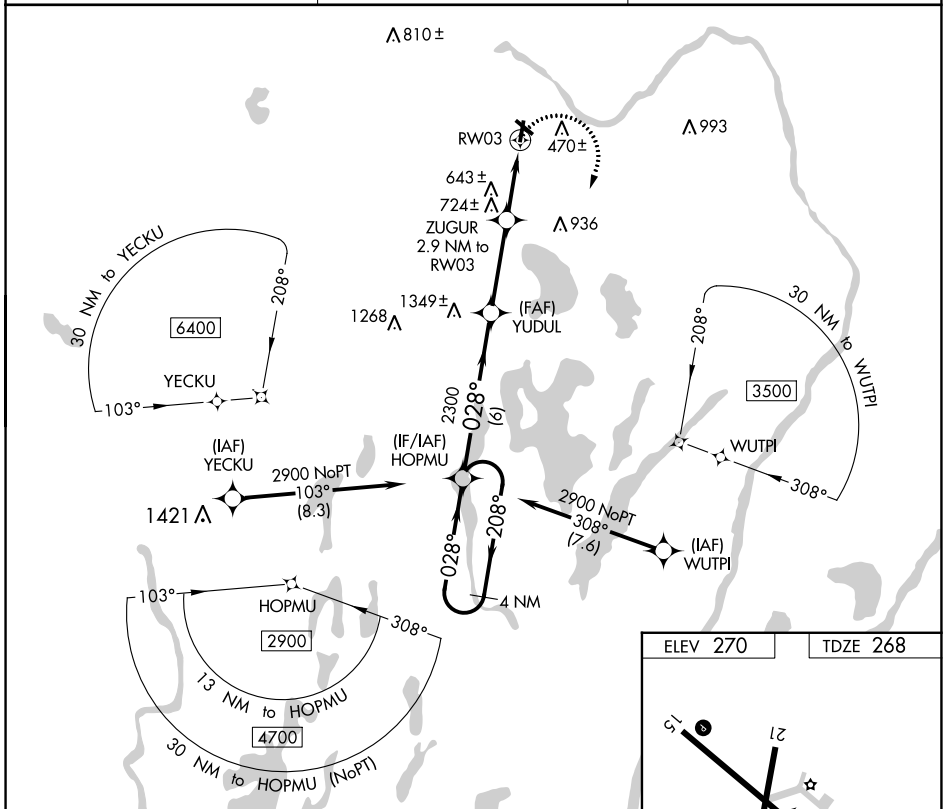
# RNAV (GPS) RWY 3

CENTRAL MAINE/NORRIDGEWOCK (OWK)

**▽** DME/DME RNP-0.3 NA. When local altimeter setting not received, use Augusta State altimeter setting and increase all MDA 80 feet; increase LNAV Cat B visibility ¼ mile and Cat C visibility ½ mile and Circling Cat B visibility ¼ mile and Cat C visibility ½ mile.  
**▲ NA** Procedure NA at night. Helicopter visibility reduction below 1 SM NA.

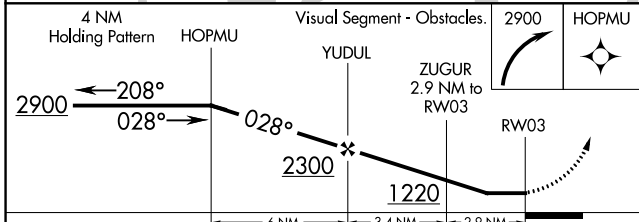
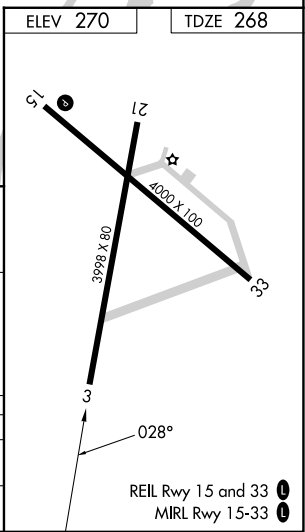
MISSED APPROACH: Climbing right turn to 2900 direct HOPMU and hold.

AWOS-AV <b>123.075</b>	PORTLAND APP CON ★ <b>128.35 299.2</b>	UNICOM <b>122.8 (CTAF) 0</b>
---------------------------	---	---------------------------------



NE-1, 22 FEB 2024 to 21 MAR 2024

NE-1, 22 FEB 2024 to 21 MAR 2024



CATEGORY	A	B	C	D
LNAV MDA	980-1	712 (800-1)	980-2 712 (800-2)	NA
<b>C</b> CIRCLING	980-1	710 (800-1)	1080-2¼ 810 (900-2¼)	NA