

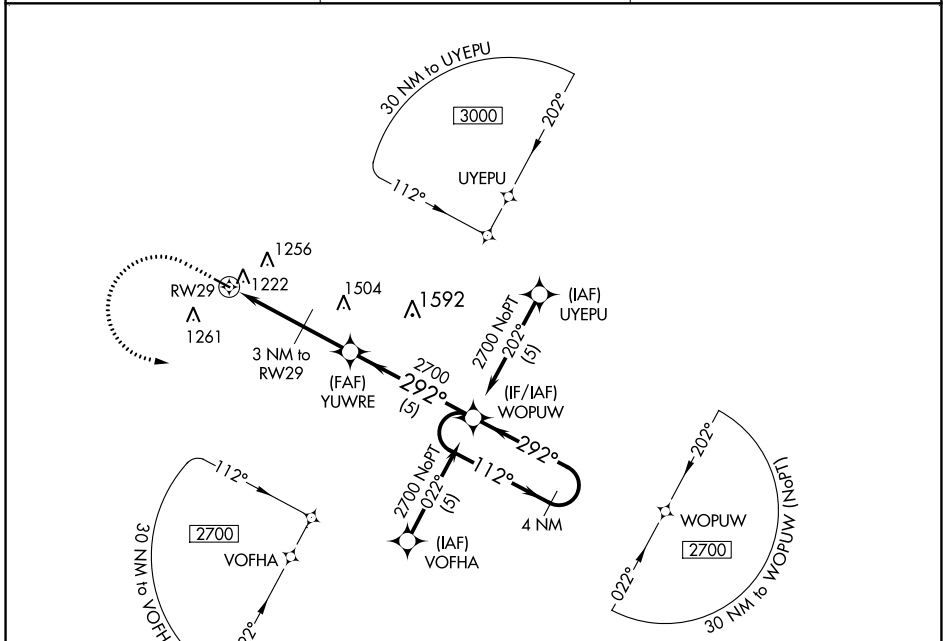
APP CRS 292°	Rwy Idg 3498
	TDZE 1076
	Apt Elev 1076

RNAV (GPS) RWY 29

OLIVIA RGNL (OVL)

RNP APCH - GPS.	MISSED APPROACH: Climb to 2000 then climbing left turn to 2700 direct WOPUW WP and hold.
▼ ▲ NA	

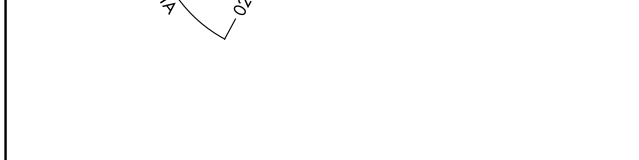
AWOS-3 119.275	MINNEAPOLIS CENTER 127.1 290.2	UNICOM 122.8 (CTAF) 0
--------------------------	--	---------------------------------



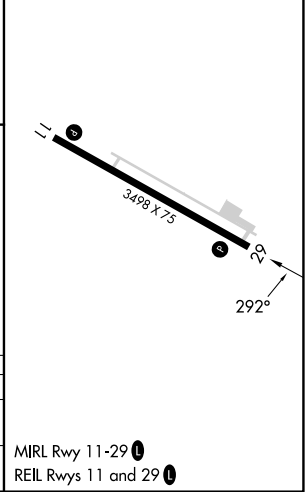
NC-1, 22 FEB 2024 to 21 MAR 2024

NC-1, 22 FEB 2024 to 21 MAR 2024

ELEV 1076	TDZE 1076
-----------	-----------



2000	2700	WOPUW	VGSI and descent angles not coincident (VGSI Angle 3.00/TCH 25)
↑	↙	✦	YUWRE WOPUW
			4 NM Holding Pattern
			3 NM to RW29
			3.03° TCH 45
			2060
			2700
			292° 112° 2700
			292°
			3 NM 1.9 NM 5 NM



CATEGORY	A	B	C	D
LNVA MDA	1580-1 504 (600-1)		1580-1½ 504 (600-1½)	
CIRCLING	1620-1 544 (600-1)		1720-1¾ 644 (700-1¾)	1720-2 644 (700-2)

MIRL Rwy 11-29 0
REIL Rwy 11 and 29 0

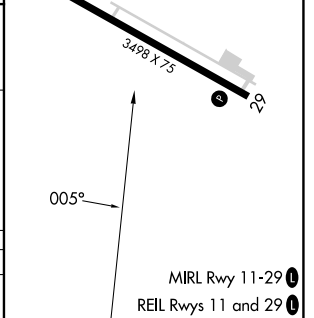
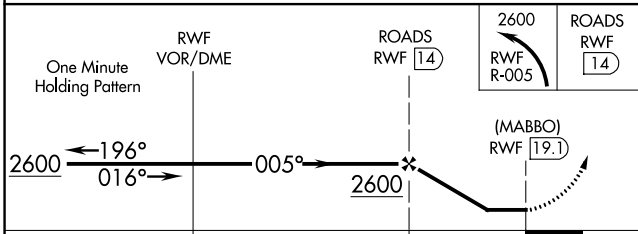
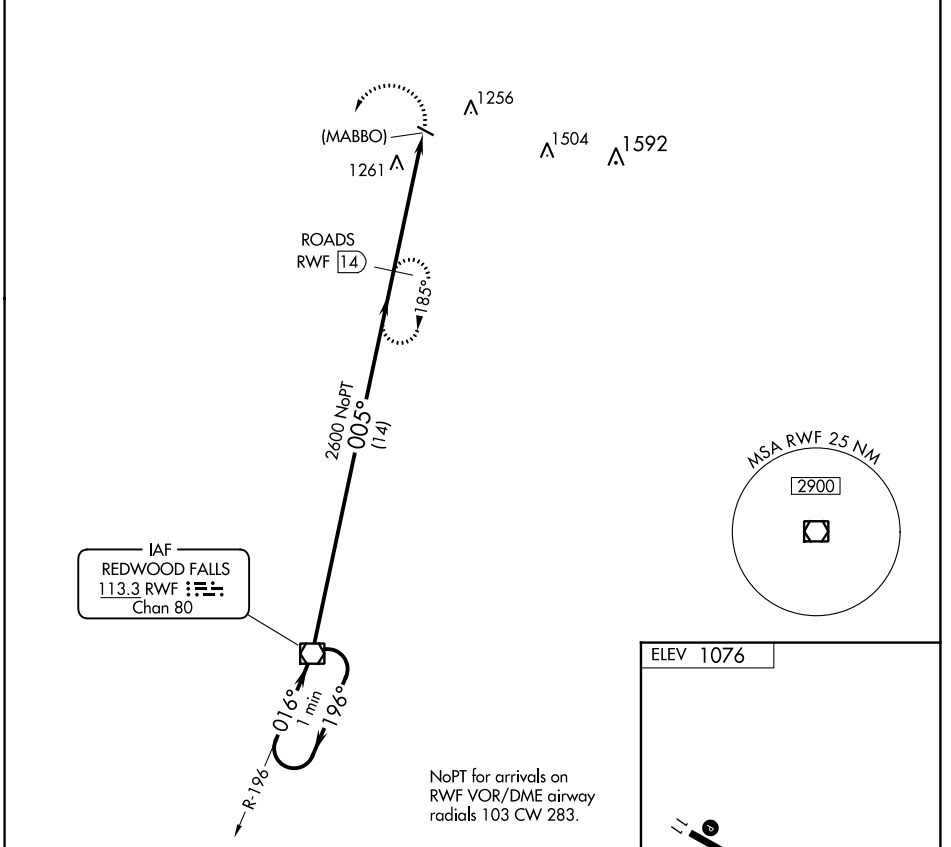
VOR/DME RWF 113.3 Chan 80	APP CRS 005°	Rwy Idg TDZE Apt Elev N/A N/A 1076
---	------------------------	--

VOR/DME or GPS-A

OLIVIA RGNL (OVL)

<p>▼</p> <p>▲ NA</p>	<p>MISSED APPROACH: Climbing left turn to 2600 via RWF R-005 to ROADS 14 DME and hold.</p>
----------------------	--

<p>AWOS-3</p> <p>119.275</p>	<p>MINNEAPOLIS CENTER</p> <p>127.1 290.2</p>	<p>UNICOM</p> <p>122.8 (CTAF) 0</p>
-------------------------------------	---	--



CATEGORY	A	B	C	D
<p>◻ CIRCLING</p>	1620-1	544 (600-1)	1720-1¾ 644 (700-1¾)	1720-2 644 (700-2)

NC-1, 22 FEB 2024 to 21 MAR 2024

NC-1, 22 FEB 2024 to 21 MAR 2024