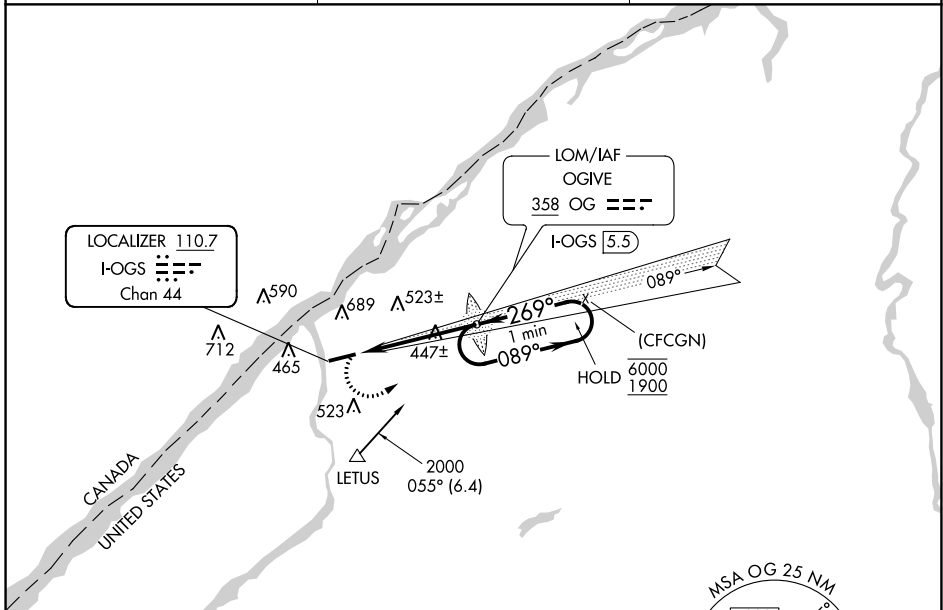


LOC/DME I-OGS 110.7 Chan 44	APP CRS 269°	Rwy Idg TDZE Apt Elev	6035 302 302
---	------------------------	-----------------------------	---

LOC RWY 27

OGDENSBURG INTL (OGS)

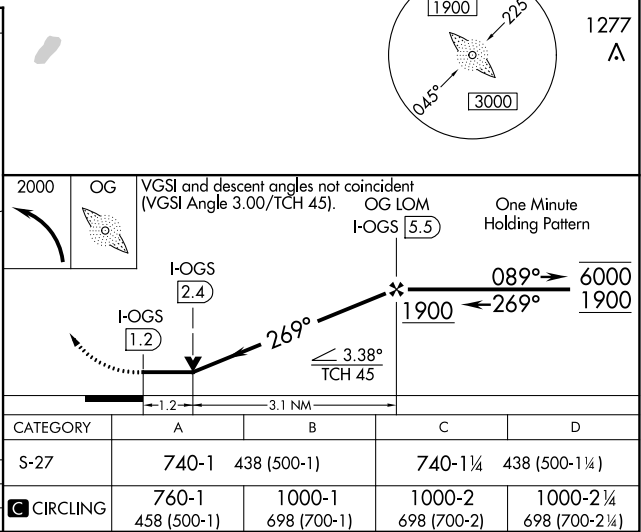
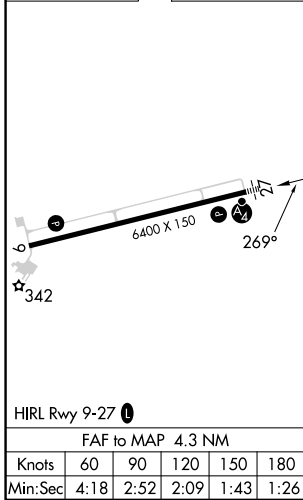
ADF required.		MALSF	MISSED APPROACH: Climbing left turn to 2000 direct OGVIE LOM and hold.
<p>▼ VDP NA when using Massena altimeter setting. When local altimeter setting not received, use Massena altimeter setting and increase all MDA 100 feet and S-LOC 27 and Circling visibility Cat C/D ¼ SM.</p> <p>▲ NA</p>			
AWOS-3 118.525	BOSTON CENTER 135.25 377.1	UNICOM 122.8 (CTAF) 0	



NE-2, 22 FEB 2024 to 21 MAR 2024

NE-2, 22 FEB 2024 to 21 MAR 2024

ELEV 302	D	TDZE 302
----------	----------	----------



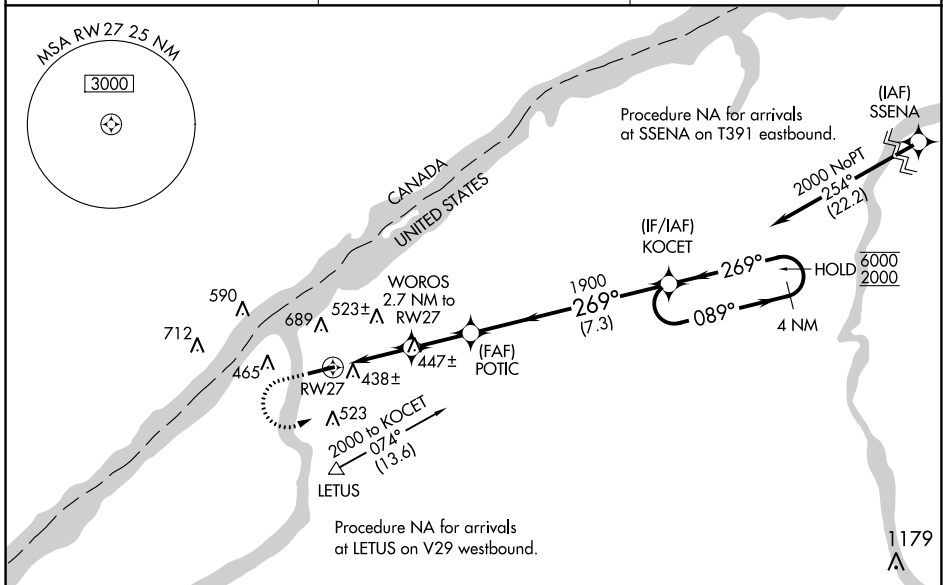
WAAS CH 40041 W27A	APP CRS 269°	Rwy Idg TDZE Apt Elev	6035 302 302
--	------------------------	-----------------------------	---

RNAV (GPS) RWY 27

OGDENSBURG INTL (OGS)

RNP APCH.	MALSF	MISSED APPROACH: Climb to 800 then climbing left turn to 2000 direct KOCET and hold.
▼ For uncompensated Baro-VNAV systems, LNAV/VNAV NA below -15°C or above 54°C. ▲		

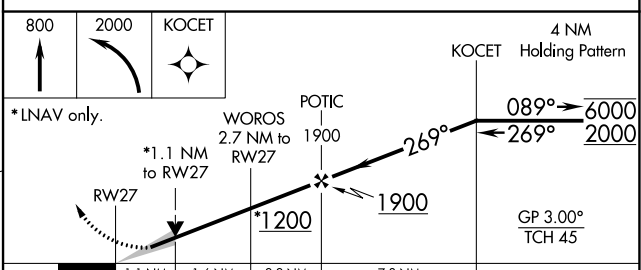
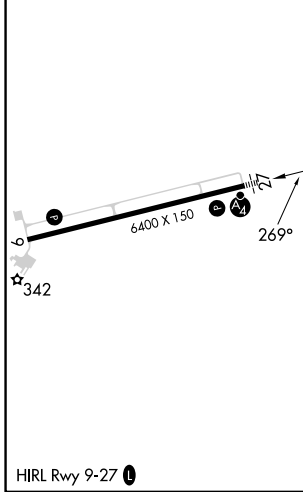
AWOS-3 118.525	BOSTON CENTER 135.25 377.1	UNICOM 122.8 (CTAF) 0
--------------------------	--------------------------------------	---------------------------------



NE-2, 22 FEB 2024 to 21 MAR 2024

NE-2, 22 FEB 2024 to 21 MAR 2024

ELEV 302	D	TDZE 302
----------	----------	----------



CATEGORY	A	B	C	D
LPV DA		552-3/4	250 (300-3/4)	
LNAV/VNAV DA		717-1 1/8	415 (500-1 1/8)	
LNAV MDA	700-1	398 (400-1)	700-1 1/8	398 (400-1 1/8)
C CIRCLING	760-1 458 (500-1)	1000-1 698 (700-1)	1000-2 698 (700-2)	1000-2 1/4 698 (700-2 1/4)

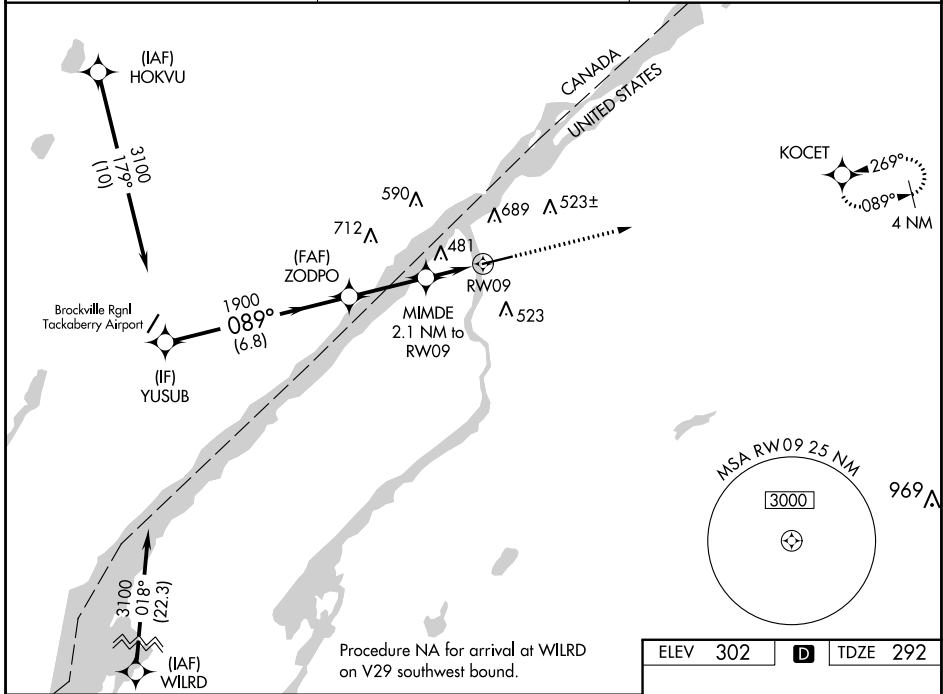
WAAS CH 69528 W09A	APP CRS 089°	Rwy Idg 6006 TDZE 292 Apt Elev 302
--	------------------------	---

RNAV (GPS) RWY 9

OGDENSBURG INTL (OGS)

RNP APCH.	MISSED APPROACH: Climb to 2000 direct KOCET and hold.
<p>▽ Rwy 9 helicopter visibility reduction below 3/4 SM NA. For uncompensated Baro-VNAV systems, LNAV/VNAV NA below -15°C or above 54°C.</p>	

AWOS-3 118,525	BOSTON CENTER 135.25 377.1	UNICOM 122.8 (CTAF) 0
--------------------------	--------------------------------------	---------------------------------

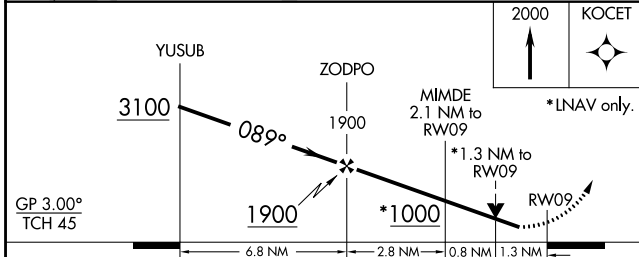


NE-2, 22 FEB 2024 to 21 MAR 2024

NE-2, 22 FEB 2024 to 21 MAR 2024

Procedure NA for arrival at WILRD on V29 southwest bound.

ELEV 302	D	TDZE 292
----------	----------	----------



CATEGORY	A	B	C	D
LPV DA		543-3/4	251 (300-3/4)	
LNAV/VNAV DA		781-13/8	489 (500-13/8)	
LNAV MDA	740-1	448 (500-1)	740-13/8	448 (500-13/8)
C CIRCLING	760-1 458 (500-1)	1000-1 698 (700-1)	1000-2 698 (700-2)	1000-21/4 698 (700-21/4)

