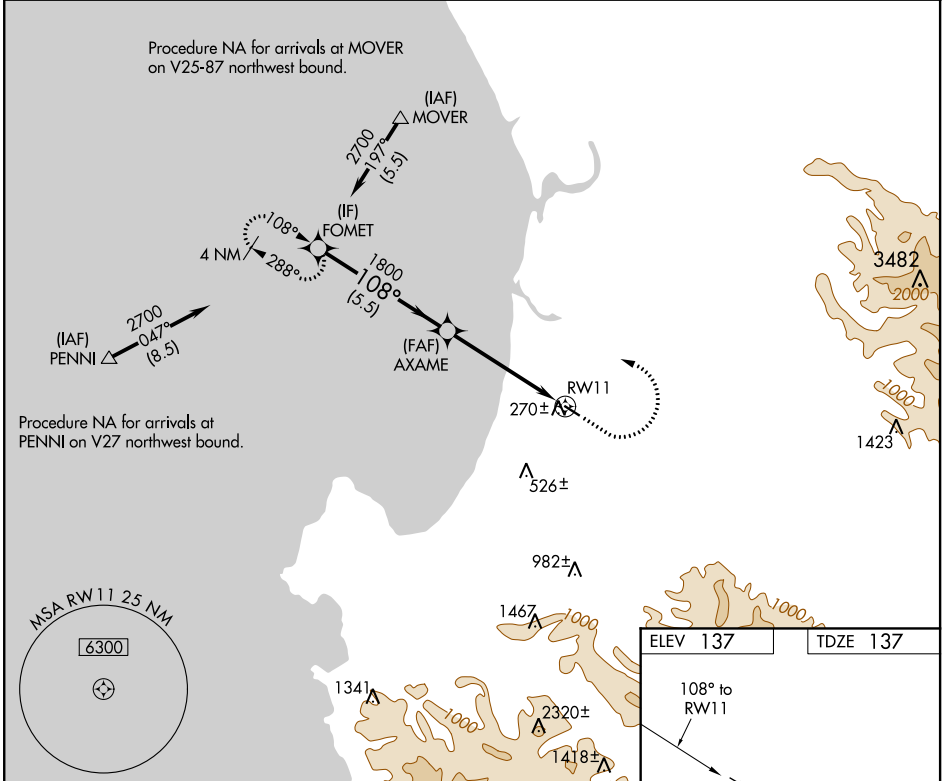


APP CRS	Rwy ldg	3483
108°	TDZE	137
	Apt Elev	137

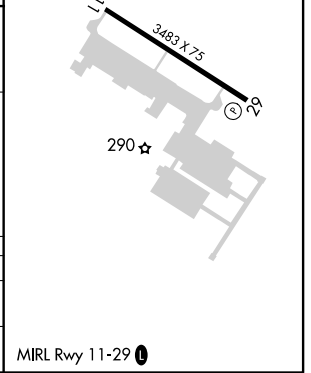
RNAV (GPS) RWY 11

MARINA MUNI (OAR)

RNP APCH.		MISSED APPROACH: Climb to 600, then climbing left turn to 2700 direct FOMET and hold, continue climb-in-hold to 2700.
 	Rwy 11 helicopter visibility reduction below ¼ SM NA.	
AWOS-3PT 134.025	NORCAL APP CON 133.0 251.15	UNICOM 122.7 (CTAF) 0



	FOMET	AXAME	RW11
	2700	1800	2700
	108°	3.04° TCH 40	1.1 NM to RW11
	5.5 NM	3.9 NM	1.1 NM
CATEGORY	A	B	C
LNVA MDA	520-1	383 (400-1)	NA
CIRCLING	640-1 503 (600-1)	760-1 623 (700-1)	NA



SW-2, 16 JUN 2022 to 14 JUL 2022

SW-2, 16 JUN 2022 to 14 JUL 2022

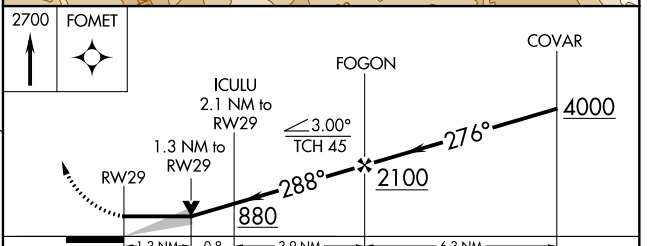
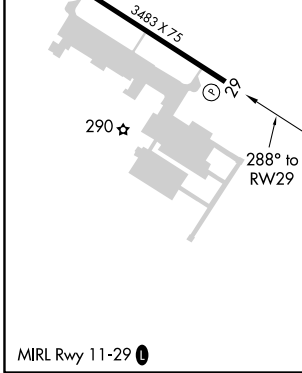
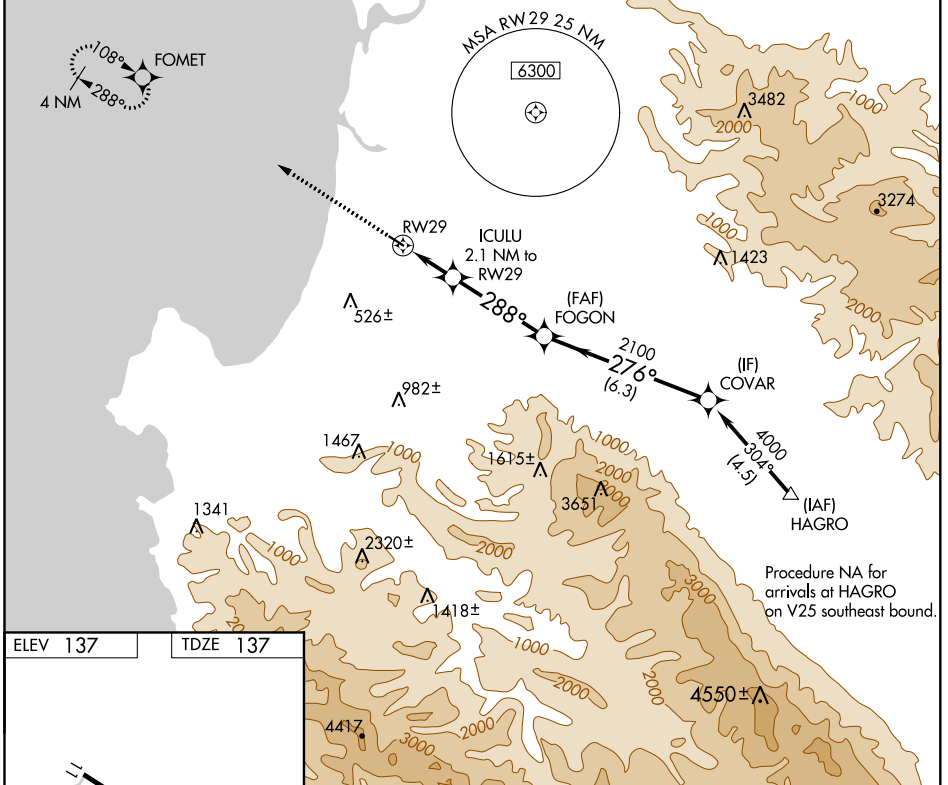
APP CRS	Rwy Idg	3483
288°	TDZE	137
	Apt Elev	137

RNAV (GPS) RWY 29

MARINA MUNI (OAR)

RNP APCH.	MISSED APPROACH: Climb to 2700 direct FOMET and hold, continue climb-in-hold to 2700.
-----------	---

AWOS-3PT 134.025	NORCAL APP CON 133.0 251.15	UNICOM 122.7 (CTAF) 0
----------------------------	---------------------------------------	---------------------------------



CATEGORY	A	B	C	D
LNAV MDA	600-1	463 (500-1)	NA	
CIRCLING	640-1 503 (600-1)	760-1 623 (700-1)	NA	

SW-2, 16 JUN 2022 to 14 JUL 2022

SW-2, 16 JUN 2022 to 14 JUL 2022