

LAKEE-THREE DEPARTURE (LAKEE3 • LAKEE)

MIRAMAR MCAS (JOE FOSS FLD) (KNKX)

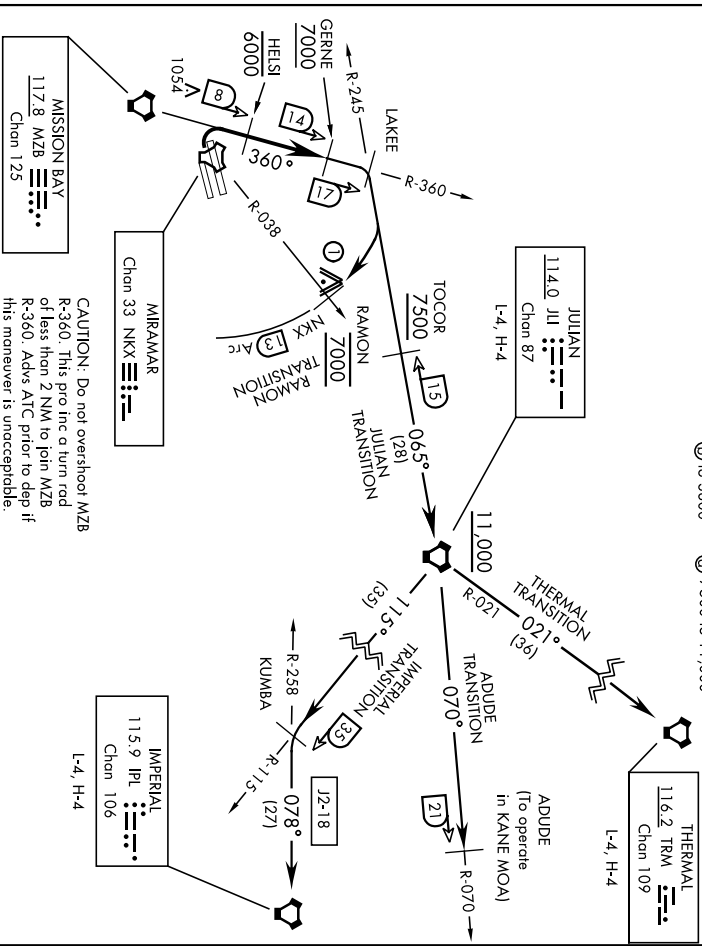
SAN DIEGO, CALIFORNIA

Rwy	Knots	60	120	180	240	300	360
* 24L/R	V/V(fpm)	260	520	780	1040	1300	1560
** 24L/R	V/V(fpm)	280	560	840	1120	1400	1680
† 24L/R	V/V(fpm)	678	1356	2034	2712	3390	4068
‡ 24L/R	V/V(fpm)	235	470	705	940	1175	1410

ATIS * 133.475 352.0
 CLNC DEL
 123.975 234.325
 GND CON
 128.625 307.325
 FOSS TOWER *
 135.2 298.925
 SOCIAL DEP CON
 132.2 269.1 E

AL-903 [USN]

* Military Minimum ** Civil Minimum † ATC Climb Rate
 ⊕ to 3600 ⊙ to 7000
 ⊖ to 3800 ⊗ 7500 to 11,000



EMERG SAFE ALT 100 NM 13,600

⊙ 3018' Twr 12.5 NM from DER.

DEPARTURE ROUTE DESCRIPTION

TAKEOFF RWY 24L/R: Turn right to intercept and proceed via MZB VORTAC R-360 to LAKEE INT. Cross HEISI at or below 6000. Cross GERNE at or above 7000. Thence...
ADUDE TRANSITION (LAKEE3 • ADUDE): Via JIL VORTAC R-245 to JIL. Then via JIL R-070 to ADUDE. Cross TOCOR at or above 7500. Cross JIL VORTAC at or above 11,000. (To operate in KANE MOA.)
IMPERIAL TRANSITION (LAKEE3 • IPL): Via JIL VORTAC R-245 to JIL. Then via JIL R-115 to KUMBA INT, then via IPL VORTAC R-258 to IPL. Cross TOCOR at or above 7500. Cross JIL VORTAC at or above 11,000.

CAUTION: Do not overshoot MZB
 R-360. This profile a turn rod
 of less than 2 NM to join MZB
 R-360. Advs ATC prior to dep if
 this maneuver is unacceptable.

(Continued on next page)

LAKEE-THREE DEPARTURE (LAKEE3 • LAKEE)

SAN DIEGO, CALIFORNIA
 MIRAMAR MCAS (JOE FOSS FLD) (KNKX)

LAKEE-THREE DEPARTURE (LAKEE3 • LAKEE)

MIRAMAR MCAS (JOE FOSS FLD) (KNKX)
SAN DIEGO, CALIFORNIA

AL-903 [USN]

DEPARTURE ROUTE DESCRIPTION
(Continued)

JULIAN TRANSITION (LAKEE3 • JLI): Via JLI VORTAC R-245 to JLI. Cross TOCOR at or above 7500. Cross JLI VORTAC at or above 11,000.

RAMON TRANSITION (LAKEE3 • RAMON): Via JLI VORTAC R-245 to NKX TACAN 13 DME. Then arc NE of NKX via the 13 DME arc to RAMON. Cross RAMON at 7000 mandatory.

THERMAL TRANSITION (LAKEE3 • TRM): Via JLI VORTAC R-245 to JLI. Then via JLI R-021 to TRM VORTAC. Cross TOCOR at or above 7500. Cross JLI VORTAC at or above 11,000.

LAKEE-THREE DEPARTURE (LAKEE3 • LAKEE)

Orig 13SEP18

SAN DIEGO, CALIFORNIA
MIRAMAR MCAS (JOE FOSS FLD) (KNKX)

20310

REDIN-FOUR DEPARTURE (REDIN4 • REDIN)

MIRAMAR MCAS (JOE FOSS FLD) (KNKX)

SAN DIEGO, CALIFORNIA

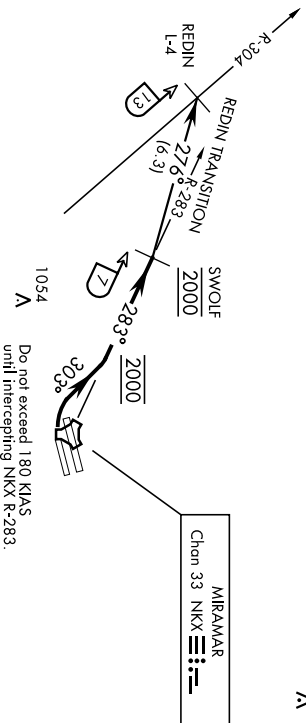
Rwy	Knots	60	120	180	240	300	360
24L/R	V/V [fpm]	780	1560	2340	3120	3900	4680

ATC Climb Rate to 2000

ATIS ★ 133.475 352.0
 CLNC DEL 125.975 254.325
 GND CON 128.625 307.325
 FOSS TOWER ★ 135.2 298.925
 SOCIAL DEP CON 119.6 363.1 W

RESTRICTED TO CAT A & B ACFT ONLY

3049
A



EMERG SAFE ALT 100 NM 13,600

DEPARTURE ROUTE DESCRIPTION

TAKE-OFF Rwy 24L/R: Climbing right turn to 2000 via heading 303° to intercept and proceed via NKX TACAN R-283 to SWOLF. Complete turn within NKX 2 DME. Cross NKX R-283/3 DME at 2000 mandatory. Maintain 2000 at SWOLF mandatory.

REDIN TRANSITION (REDIN4 • REDIN): Turn left heading 276° to intercept MZB VORTAC R-304 of REDIN.

REDIN-FOUR DEPARTURE (REDIN4 • REDIN)

Orig 10OCT19

SAN DIEGO, CALIFORNIA
 MIRAMAR MCAS (JOE FOSS FLD) (KNKX)

20310

SWOLF-NINE DEPARTURE (SWOLF9 • SWOLF)

MIRAMAR MCAS (JOE FOSS FLD) (KNKX)

SAN DIEGO, CALIFORNIA

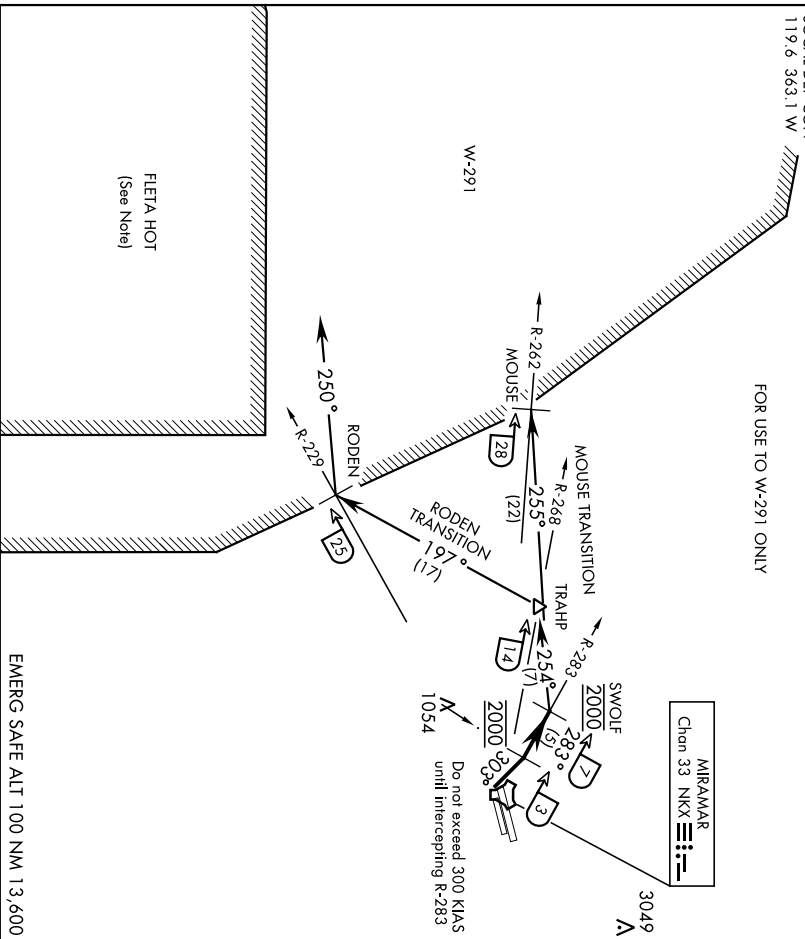
ATS ★ 133.4/75 352.0
CLNC DEL
125.975 254.325
GND CON
128.625 307.325
FOSS TOWER ★
135.2 298.925
SOCAL DEP CON
119.6 363.1 W

SHL-903 [USN]

Rwy	Knots	60	120	180	240	300	360
24L/R	V/V[ft/min]	780	1560	2340	3120	3900	4680

ATC Climb Rate to 2000

FOR USE TO W-291 ONLY



DEPARTURE ROUTE DESCRIPTION

▼ TAKE-OFF RWWY 24L/R: Climbing right turn to 2000 via heading 303° to intercept and proceed via NKX TACAN R-283 to SWOLF. Complete turn within NKX 2 DME. Cross NKX R-283/3 DME at 2000 mandatory. Maintain 2000 at SWOLF mandatory. Thence...

MOUSE TRANSITION (SWOLF9 • MOUSE): Turn left heading 255° to intercept NKX R-262 at MOUSE. Maintain 2000 for entry into W-291.

(Continued on next page)

SWOLF-NINE DEPARTURE (SWOLF9 • SWOLF)

Orig 10OCT19

SAN DIEGO, CALIFORNIA
MIRAMAR MCAS (JOE FOSS FLD) (KNKX)

SWOLF-NINE DEPARTURE (SWOLF9 • SWOLF)

MIRAMAR MCAS (JOE FOSS FLD) (KNKX)
SAN DIEGO, CALIFORNIA

SHL-903 [USN]

DEPARTURE ROUTE DESCRIPTION
(Continued)

RODEN TRANSITION (SWOLF9 • RODEN): Turn left heading 254 ° to intercept
NKX R-268 at TRAHF. Then turn left heading 197° to intercept NKX R-229 at RODEN.
Maintain 2000 for entry into W-291 via heading 250°.

NOTE:

- (1) FLETA HOT-ACTIVE FIRING AREA (DANGER, REMAIN CLEAR).
- (2) ALL AIRCRAFT SHOULD MAINTAIN LAST ASSIGNED HEADING/RADIAL
AND ALTITUDE TO AVOID INBOUND MILITARY OR CIVIL AIRCRAFT AT
HIGHER ALTITUDES!

SWOLF-NINE DEPARTURE (SWOLF9 • SWOLF)

Orig 10OCT19

SAN DIEGO, CALIFORNIA
MIRAMAR MCAS (JOE FOSS FLD) (KNKX)

20310

TINNY-FOUR DEPARTURE (TINNY4 • TINNY)

MIRAMAR MCAS (JOE FOSS FLD) (KNKX)

SAN DIEGO, CALIFORNIA

SHL-903 [USN]

ATS ★ 133.475 352.0
CLNC DEL
125.975 254.325
GND CON
128.625 307.325
FOSS TOWER ★
135.2 298.925
SOCAL DEP CON
119.6 363.1 W

Rwy	Knots	60	120	180	240	300	360
24L/R	V/V[ft/min]	780	1560	2340	3120	3900	4680

ATC Climb Rate to 2000

SHAFTER
115.4 EHF
Chan 101
L-3-1L7-H-4

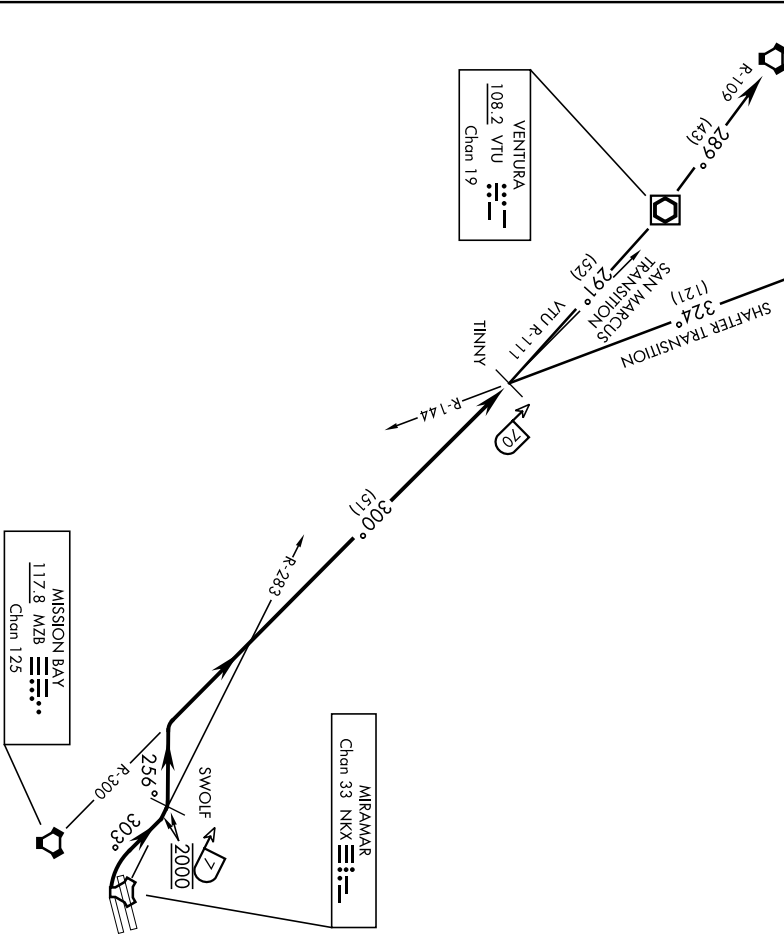
SAN MARCUS
114.9 RZS
Chan 96
L-3-1L4-L7-H-4

VENTURA
108.2 VTU
Chan 19

MIRAMAR
Chan 33 NKX

MISSION BAY
117.8 MZB
Chan 125

DO NOT EXCEED 300 KIAS
UNTIL INTERCEPTING R-283



EMERG SAFE ALT 100 NM NM 13,600

NOTE: Chart not to scale

TINNY-FOUR DEPARTURE (TINNY4 • TINNY)

Orig 10OCT19

SAN DIEGO, CALIFORNIA
MIRAMAR MCAS (JOE FOSS FLD) (KNKX)

20310

TINNY-FOUR DEPARTURE (TINNY4•TINNY)

MIRAMAR MCAS (JOE FOSS FLD) (KNKX)
SAN DIEGO, CALIFORNIA

SHL-903 [USN]

DEPARTURE ROUTE DESCRIPTION



TAKE-OFF RWY 24L/R: Climbing right turn to 2000 heading 303° to intercept and proceed via NKX TAGAN R-283 to SWOLF. Complete turn within NKX 2 DME. Cross NKX R-283/3 DME at 2000 mandatory. Maintain 2000 at SWOLF mandatory. Then turn left heading 256 to intercept and proceed via MZB VORTAC R-300 to TINNY int. Thence...

SAN MARCUS TRANSITION (TINNY4•RZS): Via VTU VOR/DME R-1111 to VTU, then via RZS VORTAC R-109 to RZS.

SHAFTER TRANSITION (TINNY4•EHF): Via EHF VORTAC R-144 to EHF.

TINNY-FOUR DEPARTURE (TINNY4•TINNY)

Orig 10OCT19

SAN DIEGO, CALIFORNIA
MIRAMAR MCAS (JOE FOSS FLD) (KNKX)

VITKO-THREE DEPARTURE (VITK03 • VITKO)

MIRAMAR MCAS (JOE FOSS FLD) (KNKX)

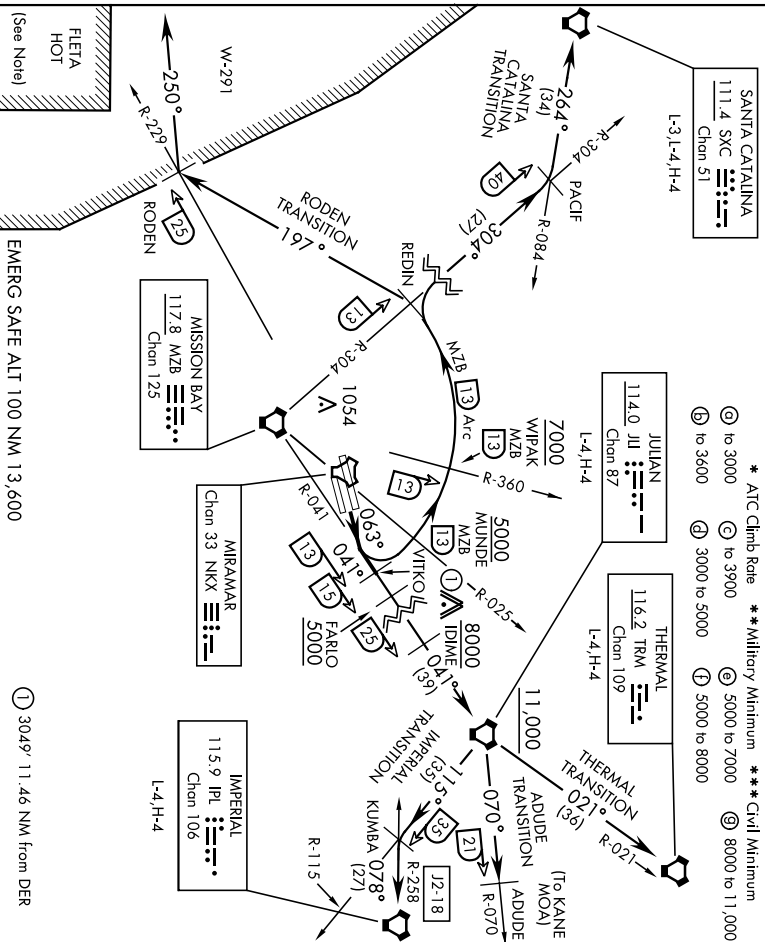
SAN DIEGO, CALIFORNIA

ATIS * 133.4/75 352.0
 CLINC DEL 123.975 234.325
 GND CON 128.625 307.325
 FOSS TOWER * 135.2 298.925
 SOCIAL DEP CON 132.2 269.1 E

AL-903 [USN]

Rwy	Knots	60	120	180	240	300	360
* 6L/R	V/V(fpm)	570	1040	1560	2080	2600	3120
** 6L/R	V/V(fpm)	280	560	840	1120	1400	1680
*** 6L/R	V/V(fpm)	300	600	900	1200	1500	1800
* 6L/R	V/V(fpm)	880	1360	2040	2720	3400	4080
* 6L/R	V/V(fpm)	353	706	1059	1412	1765	2118
* 6L/R	V/V(fpm)	300	600	900	1200	1500	1800
* 6L/R	V/V(fpm)	220	440	660	880	1100	1320

* ATC Climb Rate ** Military Minimum *** Civil Minimum
 (A) to 3000 (B) to 3900 (C) 5000 to 7000 (D) 8000 to 11,000
 (E) to 3600 (F) 3000 to 5000 (G) 5000 to 8000



DEPARTURE ROUTE DESCRIPTION

TAKEOFF Rwy 6L/R: Climb via heading 063° to intercept and proceed via MZB VORTAC R-041 to VITKO. Join MZB R-041 at or above 3000. Thence...

ADUDE TRANSITION (VITK03 • ADUDE): Via MZB R-041 to JII VORTAC. Then JII R-070 to ADUDE. Cross FARLO at or above 5000. Cross IDIME at or above 8000. Cross JII VORTAC at or above 11,000. (To operate in KANE MOA.)

IMPERIAL TRANSITION (VITK03 • IPI): Via MZB R-041 to JII VORTAC. Then via JII R-115 to KUMBA INT, then via IPI VORTAC R-258 to IPI. Cross FARLO at or above 5000. Cross IDIME at or above 8000. Cross JII VORTAC at or above 11,000.

(Continued on next page)

VITKO-THREE DEPARTURE (VITK03 • VITKO)

Orig 13SEP18

SAN DIEGO, CALIFORNIA
 MIRAMAR MCAS (JOE FOSS FLD) (KNKX)

22111

VITKO-THREE DEPARTURE (VITK03 • VITKO)

MIRAMAR MCAS (JOE FOSS FLD) (KNKX)
SAN DIEGO, CALIFORNIA

AL-903 [USN]

DEPARTURE ROUTE DESCRIPTION
(Continued)

RODEN TRANSITION (VITK03 • RODEN): Arc N of MZB VORTAC via the 13 mile arc to REDIN. Then turn left heading 197° to intercept NKK R-229 at RODEN. Then turn right heading 250° for entry into W-291. Cross MUNDE at or above 5000. Cross WIPAK at or above 7000.

SANTA CATALINA TRANSITION (VITK03 • SXC): Arc N of MZB VORTAC via the 13 mile arc to REDIN. Then via MZB R-304 to PACIF INT. Then via SXC R-084 to SXC VORTAC. Cross MUNDE at or above 5000. Cross WIPAK at or above 7000.

THERMAL TRANSITION (VITK03 • TRM): Via MZB R-041 to JII VORTAC. Then via JII R-021 to TRM VORTAC. Cross FARLO at or above 5000. Cross IDIME at or above 8000. Cross JII VORTAC at or above 11,000.

NOTE:

- (1) FLETA HOT-ACTIVE FIRING AREA (DANGER, REMAIN CLEAR)
- (2) ALL AIRCRAFT SHOULD MAINTAIN LAST ASSIGNED HEADING/RADIAL AND ALTITUDE TO AVOID INBOUND MILITARY OR CIVIL AIRCRAFT AT HIGHER ALTITUDES!

VITKO-THREE DEPARTURE (VITK03 • VITKO)

Orig 13SEP18

SAN DIEGO, CALIFORNIA
MIRAMAR MCAS (JOE FOSS FLD) (KNKX)