

LOC I-MXF	APCH CRS	Req'd Idg	8008
109.3	150°	TDZE	171
		Appl Elev	171

AL-274 [USAF]

ALSF-1	
--------	--

MAXWELL AFB (KMXF)

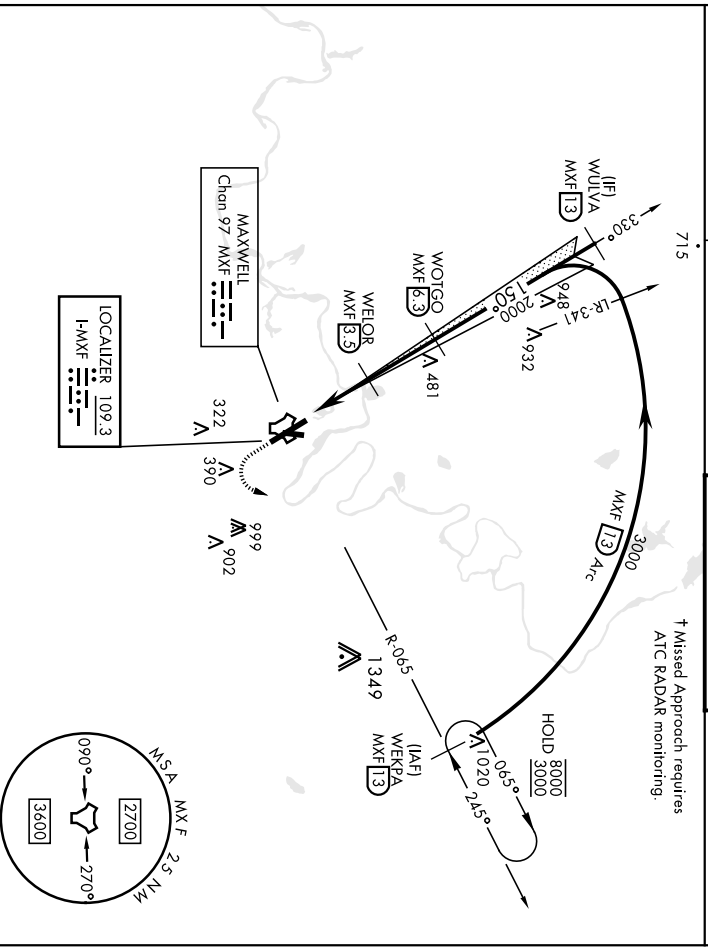
▲ \*\* When ALS Inop, increase RVR to 40 and vis to 3/4 mile.  
 \*\* When ALS Inop, increase CAT Ab RVR to 55 and vis to 1 mile, CAT CDE vis to 1/2 mile.  
 \*\*\* Circling not authorized E of Rwy 15-33.

† MISSED APPROACH: Climb to 1000, then climbing left turn to 3000 to intercept MXF TACAN R-065 outbound to 13 DME (WEPKA) and hold.

ATIS *	MONTGOMERY APP CON	TOWER *
134.7 269.9	121.2 269.05 (N) 124.0 363.025 (S)	118.15 253.5

GND CON	127.15 289.4
---------	--------------

† Missed Approach requires ATIS RADAR monitoring.



EMERG SAFE ALT 100 NM 5000

CATEGORY	A	B	C	D	E	ELEV 171	TDZE 171
	S-ILS 15 *	371/24	200	(200-1/2)			
S-LOC 15 ***	600/24 429 (500-1/2)	600/40 429 (500-3/4)					
CIRCLINGS ***	680-1 509 (600-1)	720-1 1/2 920-2 1/2	549 (600-1 1/2) 749 (800-2 1/2)	NA			

# TACAN RWY 15

MAXWELL AFB (KMXF)

AL-274 [USAF]

TACAN MXF	APCH CRS	Rwy/Idg	8008
Chon 97	158°	TDZE	171
		Appl Elev	171

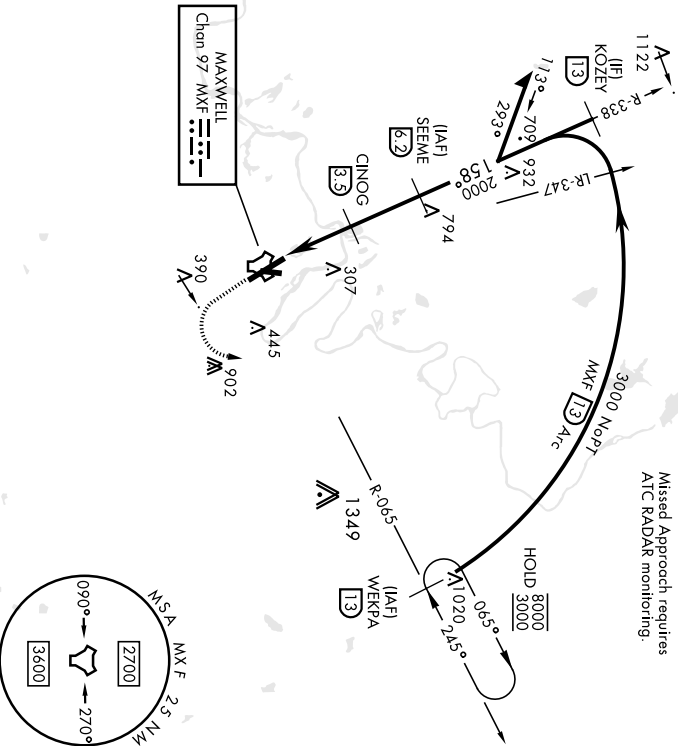
▲ \*\* When AUS Inop, increase CAT AB RVR to 55 and vis to 1 mile, CAT CDE and vis to 1½ miles.  
 \*\* Circling not authorized E of Rwy 15-33.



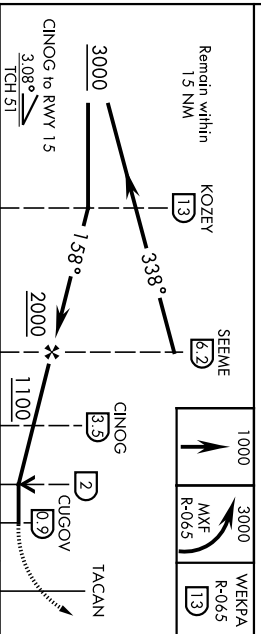
MISSED APPROACH: Climb to 1000, then climbing left turn to 3000 to intercept MXF TACAN R-065 outbound to 1.3 DME (WERPA) and hold.

ATIS *	MONTGOMERY APP CON	TOWER *	GND CON
134.7 269.9	121.2 269.05 (N) 124.0 363.025 (S)	118.15 253.5	127.15 289.4

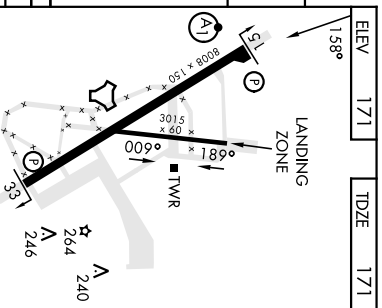
Missed Approach requires ATC RADAR monitoring.



EMERG SAFE ALT 100 NM 5000



CATEGORY	A	B	C	D	E
S-15 *	620/24 449 (500-½)		620/45 449 (500-¾)		
** CIRCLING **	680-1 509 (600-1)		730-1½ 920-2½ 549 (600-1½) 749 (800-2½)		NA



# TACAN RWY 15

MAXWELL AFB (KMXF)

TACAN MXF APCH CRS TDZE TDZE Elev

AL-274 (USAF)

# TACAN RWY 33

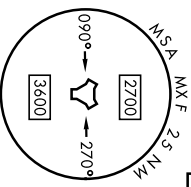
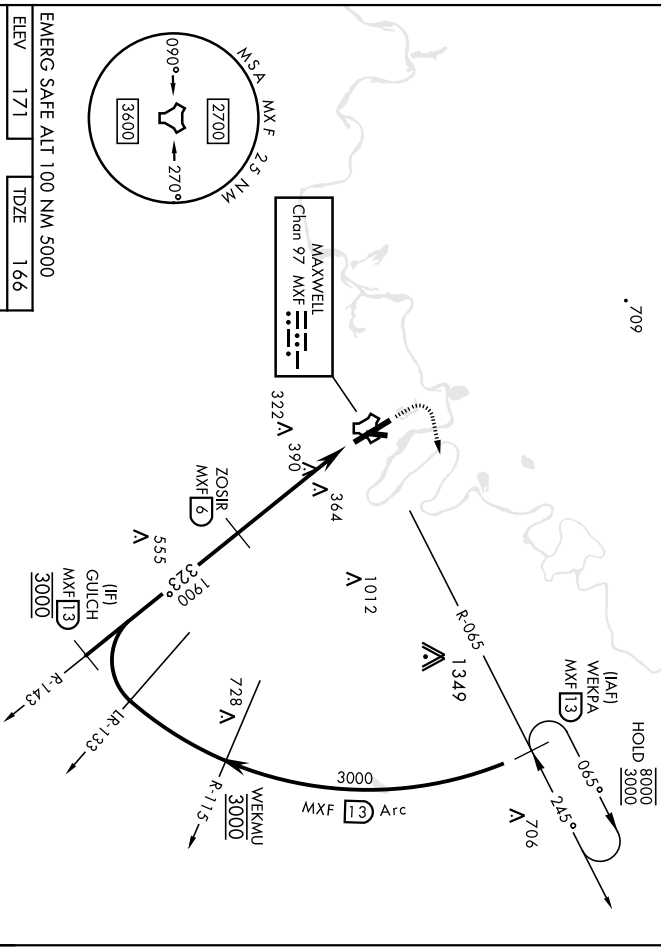
MAXWELL AFB (KMXF)

Chon 97 323° Rwy/Ldg 8008 TDZE Elev 166 Appt Elev 171

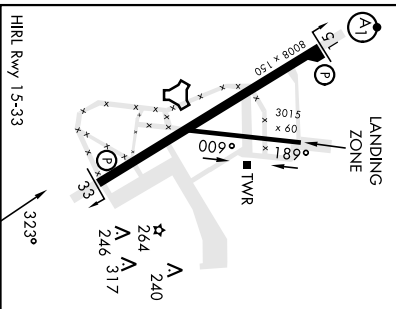
**▲** \* Circling not authorized E of Rwy 1-5-33. MISSED APPROACH: Climb to 1000, then climbing right turn to 3000 to intercept MXF TACAN R-065 outbound to 13 DME (WEKPA) and hold.

ATIS \* MONTGOMERY APP CON TOWER \* GND CON  
134.7 269.9 121.2 269.05 (N) 124.0 363.025 (S) 118.15 253.5 127.15 289.4

Misled Approach requires ATC RADAR monitoring.



EMERG SAFE ALT 100 NM 5000  
ELEV 171 TDZE 166



1000	3000	WEKPA R-065	13		
		MXF R-065	13		
		ZOSIR	6		
		WEKPA	13		
		GULCH	13		
		TACAN			
		CODOK I	11		
		CH 51			
		5 NM			
		2.93°			
		1900			
		353°			
		3000			
		0.4			
CATEGORY	A	B	C	D	E
S-33	740-1 574 (600-1)	740-1 574 (600-1 1/2)	740-1 5/8 (600-1 1/2)	920-2 1/2	NA
<b>G</b> CIRCLING	740-1 569 (600-1)	740-1 569 (600-1)	740-1 5/8 (600-1 1/2)	748 (800-2 1/2)	NA

MONTGOMERY, ALABAMA

32°23'N-86°22' W

MAXWELL AFB (KMXF)

Archt 7 23FEB23

# TACAN RWY 33