

LOC/DME I-VMH 109.55 Chan 32 (Y)	APP CRS 310°	Rwy Idg 5596 TDZE 974 Apt Elev 974
---	------------------------	---

ILS or LOC RWY 31

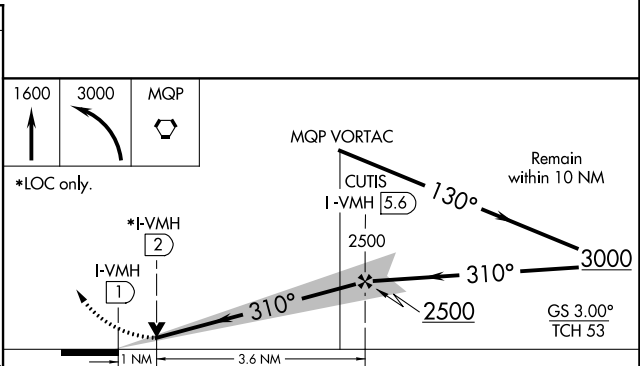
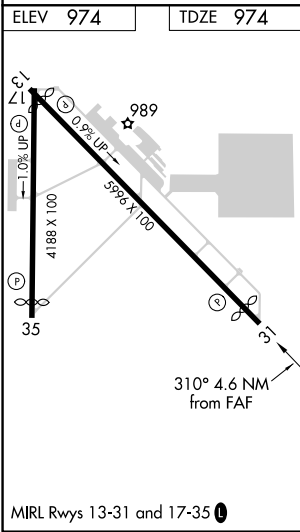
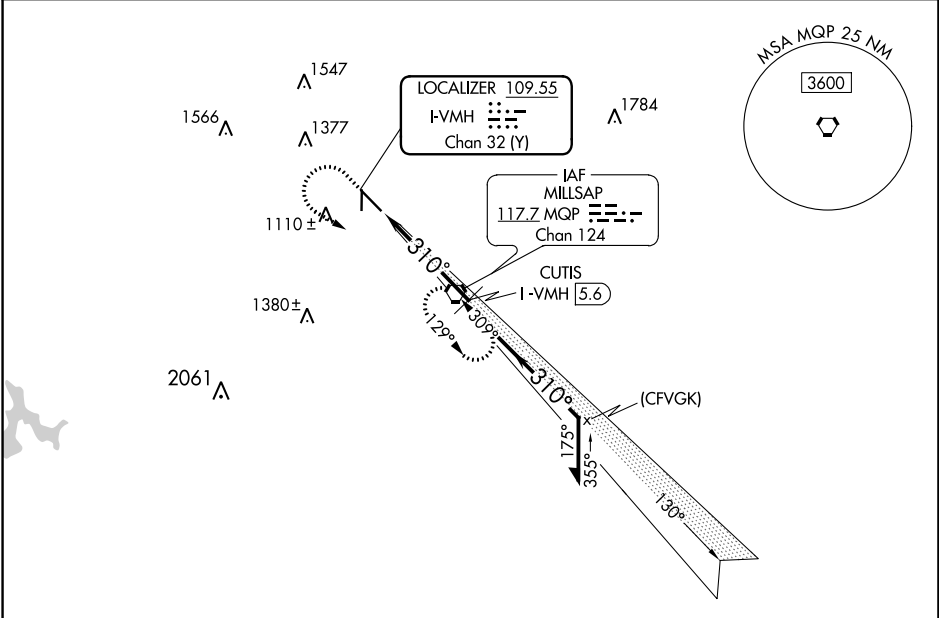
MINERAL WELLS RGNL (MWL)

DME required.

NA Circling to Rwy 17-35 NA at night.
Autopilot coupled approach NA below 1500.

MISSED APPROACH: Climb to 1600 then climbing left turn to 3000 direct MQP VORTAC and hold.

ASOS 135.075	FORT WORTH CENTER 127.0 360.6	UNICOM 122.725 (CTAF) 0
------------------------	---	-----------------------------------



CATEGORY	A	B	C	D
S-ILS 31	1174- ³ / ₄		200 (200- ³ / ₄)	
S-LOC 31	1340-1		366 (400-1)	
CIRCLING	1420-1 446 (500-1)	1460-1 486 (500-1)	1740-2 ¹ / ₄ 766 (800-2 ¹ / ₄)	1740-2 ¹ / ₂ 766 (800-2 ¹ / ₂)

SC-2, 22 FEB 2024 to 21 MAR 2024

SC-2, 22 FEB 2024 to 21 MAR 2024

WAAS CH 70639 W31A	APP CRS 310°	Rwy Idg 5596 TDZE 974 Apt Elev 974
--	------------------------	---

RNAV (GPS) RWY 31

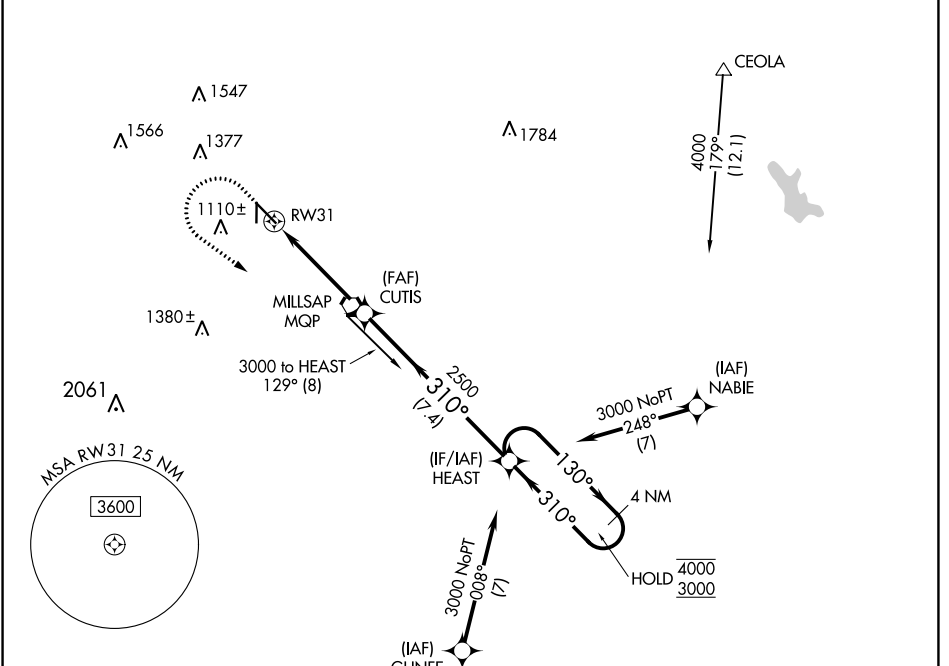
MINERAL WELLS RGNL (MWL)

RNP APCH.

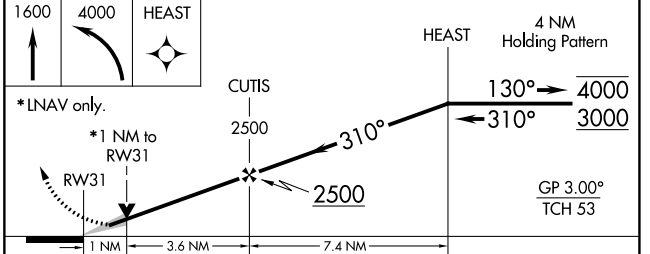
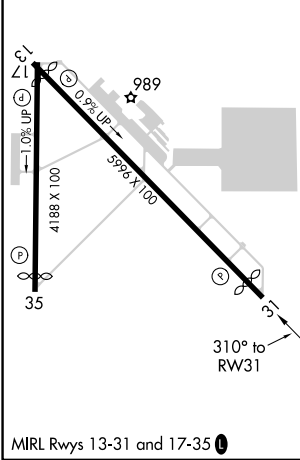
⚠ For uncompensated Baro-VNAV systems, LNAV/VNAV NA below -9°C or above 54°C. Circling Rws 17, 35 NA at night.

MISSED APPROACH: Climb to 1600 then climbing left turn to 4000 direct HEAST and hold.

ASOS 135.075	FORT WORTH CENTER 127.0 360.6	UNICOM 122.725 (CTAF) 0
------------------------	---	-----------------------------------



ELEV 974	TDZE 974
----------	----------



CATEGORY	A	B	C	D
LPV DA		1174- ³ / ₄	200 (200- ³ / ₄)	
LNAV/VNAV DA		1224- ³ / ₄	250 (300- ³ / ₄)	
LNAV MDA		1340-1	366 (400-1)	
CIRCLING	1420-1 446 (500-1)	1460-1 486 (500-1)	1740-2 ¹ / ₂ 766 (800-2 ¹ / ₂)	1740-2 ¹ / ₂ 766 (800-2 ¹ / ₂)

SC-2, 22 FEB 2024 to 21 MAR 2024

SC-2, 22 FEB 2024 to 21 MAR 2024

VORTAC MQP 117.7 Chan 124	APP CRS 309°	Rwy Idg 5596 TDZE 974 Apt Elev 974
---	------------------------	---

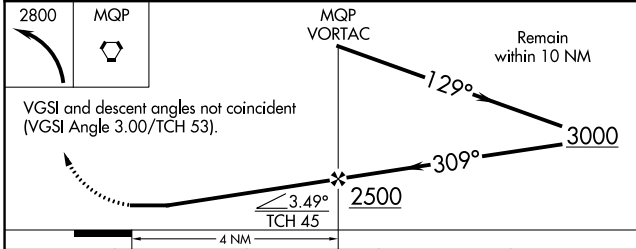
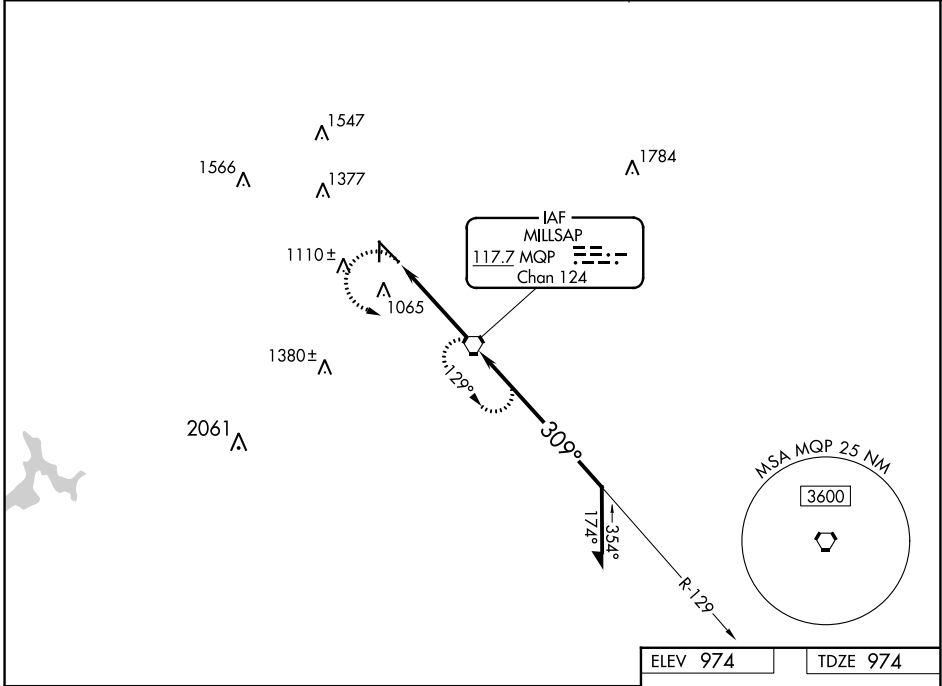
VOR RWY 31

MINERAL WELLS RGNL (MWL)

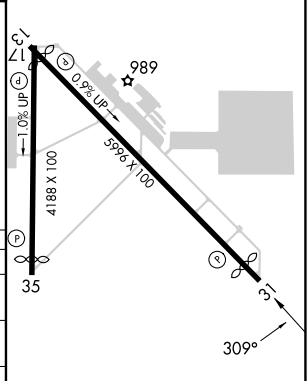
NA Circling to Rwy 17 NA at night. When local altimeter setting not received, use Fort Worth Meacham altimeter setting.

MISSED APPROACH: Climbing left turn to 2800 direct MQP VORTAC and hold.

ASOS 135.075	FORT WORTH CENTER 127.0 360.6	UNICOM 122.725 (CTAF) 0
------------------------	---	-----------------------------------



ELEV 974	TDZE 974
----------	----------



CATEGORY	A	B	C	D
S-31	1340-1 366 (400-1)			1340-1¼ 366 (400-1¼)
C CIRCLING	1420-1 446 (500-1)	1460-1 486 (500-1)	1740-2¼ 766 (800-2¼)	1740-2½ 766 (800-2½)
FORT WORTH MEACHAM INTL ALTIMETER SETTING MINIMUMS				
S-31	1460-1 486 (500-1)		1460-1¼ 486 (500-1¼)	1460-1½ 486 (500-1½)
C CIRCLING	1540-1 566 (600-1)	1560-1 586 (600-1)	1820-2½ 846 (900-2½)	1820-2¾ 846 (900-2¾)

MIRL Rwy 13-31 and 17-35 0					
FAF to MAP 4 NM					
Knots	60	90	120	150	180
Min:Sec	4:00	2:40	2:00	1:36	1:20

SC-2, 22 FEB 2024 to 21 MAR 2024

SC-2, 22 FEB 2024 to 21 MAR 2024