

LOC I-MWC 108.5	APP CRS 148°	Rwy Idg TDZE Apt Elev	4107 745 745
---------------------------	------------------------	-----------------------------	---

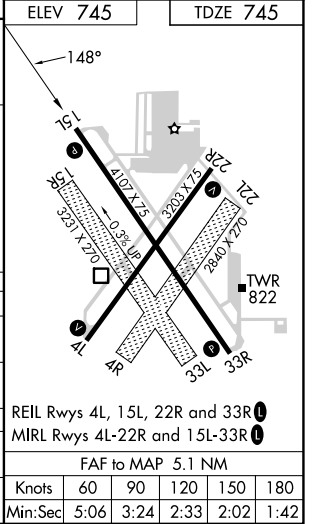
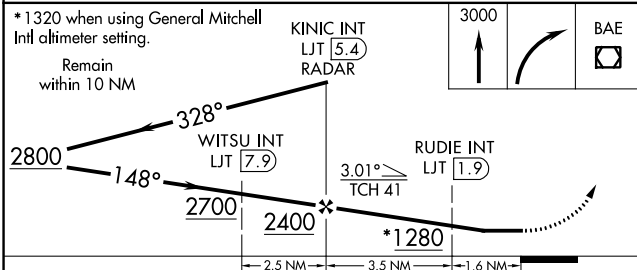
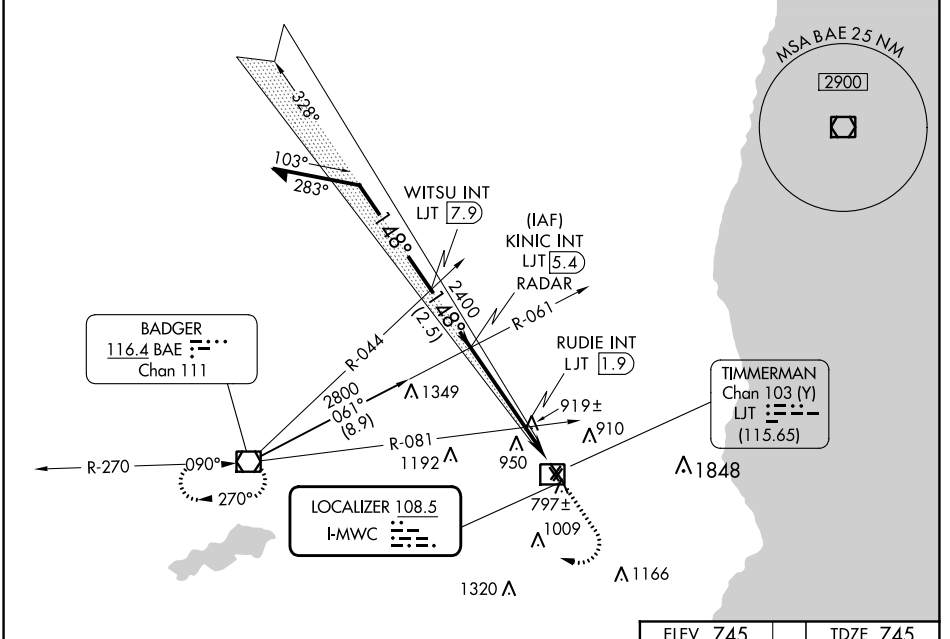
LOC RWY 15L

LAWRENCE J TIMMERMAN (MWC)

⚠ Circling NA to Rwys 4R, 15R, 22L and 33L. Rwy 15L helicopter visibility reduction below 3/4 SM NA. # Simultaneous reception of I-MWC and LJT DME required.

MISSED APPROACH:
Climb to 3000 then right turn direct BAE VOR/DME and hold.

ATIS 128.3	MILWAUKEE APP CON 125.35 307.0	TIMMERMAN TOWER ★ 120.5 (CTAF) ①	GND CON 121.7	CNLC DEL 121.7 (When twr closed)	UNICOM 122.95
----------------------	--	---	-------------------------	---	-------------------------



CATEGORY	A	B	C	D
S-LOC 15L	1280-1	535 (600-1)	1280-1½	535 (600-1½)
CIRCLING	1280-1 535 (600-1)	1340-1 595 (600-1)	1360-1¾ 615 (700-1¾)	1560-2¾ 815 (900-2¾)
RUDIE FIX MINIMUMS (DUAL VOR RECEIVERS OR DME REQUIRED #)				
S-LOC 15L	1180-1	435 (500-1)	1180-1¼	435 (500-1¼)
CIRCLING	1220-1 475 (500-1)	1340-1 595 (600-1)	1360-1¾ 615 (700-1¾)	1560-2¾ 815 (900-2¾)

EC-3, 22 FEB 2024 to 21 MAR 2024

EC-3, 22 FEB 2024 to 21 MAR 2024

WAAS CH 63020 W15A	APP CRS 148°	Rwy Idg TDZE Apt Elev	4107 745 745
--	------------------------	-----------------------------	---

RNAV (GPS) RWY 15L

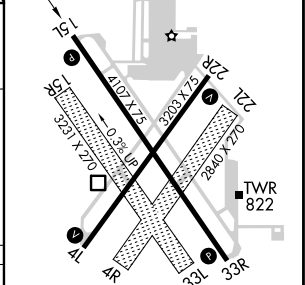
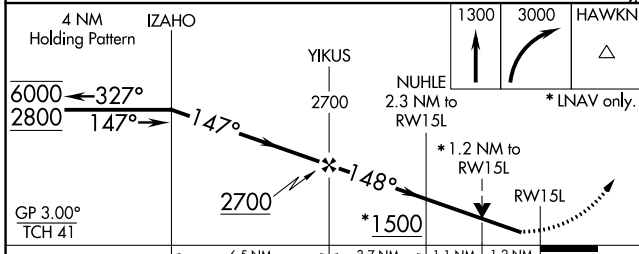
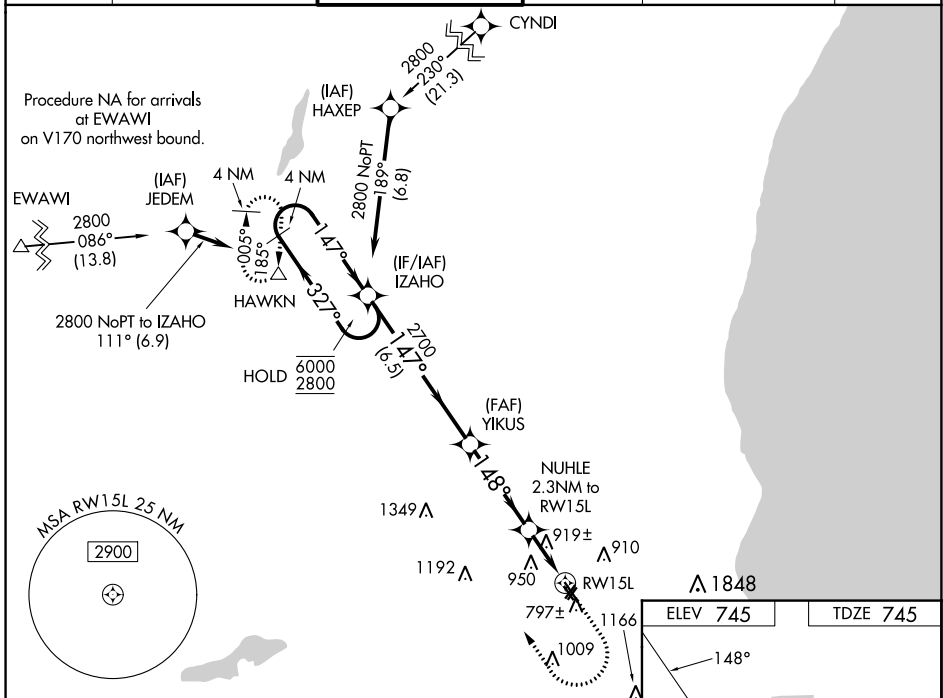
LAWRENCE J TIMMERMAN (MWC)

RNP APCH.

⚠ Circling NA to Rwy 4R, 15R, 22L and 33L. Rwy 15L helicopter visibility reduction below ¼ SM NA. For uncompensated Baro-VNAV systems, LNAV/VNAV NA below -16°C or above 54°C. VDP and Baro-VNAV NA when using General Mitchell Intl altimeter setting. When local altimeter setting not received, use General Mitchell Intl altimeter setting and increase LPV DA to 1024 feet and LNAV/VNAV DA to 1251 feet; increase all MDAs 40 feet and LNAV visibility Cats C and D ½ SM.

MISSED APPROACH:
Climb to 1300 then climbing right turn to 3000 direct HAWKN and hold.

ATIS 128.3	MILWAUKEE APP CON 125.35 307.0	TIMMERMAN TOWER ★ 120.5 (CTAF) 0	GND CON 121.7	CLNC DEL 121.7 (When twr closed)	UNICOM 122.95
----------------------	--	--	-------------------------	--	-------------------------



CATEGORY	A				B		C		D	
LPV DA	995-1 250 (300-1)									
LNAV/VNAV DA	1222-1½ 477 (500-1½)									
LNAV MDA	1180-1		435 (500-1)		1180-1¼		435 (500-1¼)			
CIRCLING	1220-1		1340-1		1360-1¾		1560-2¾			
	475 (500-1)		595 (600-1)		615 (700-1¾)		815 (900-2¾)			

REIL Rwy 4L, 22R, 15L, and 33R

MIRL Rwy 4L-22R and 15L-33R

EC-3, 22 FEB 2024 to 21 MAR 2024

EC-3, 22 FEB 2024 to 21 MAR 2024

WAAS CH 69524 W22A	APP CRS 218°	Rwy Idg TDZE 739 Apt Elev 745	3203
--	------------------------	---	-------------

RNAV (GPS) RWY 22R

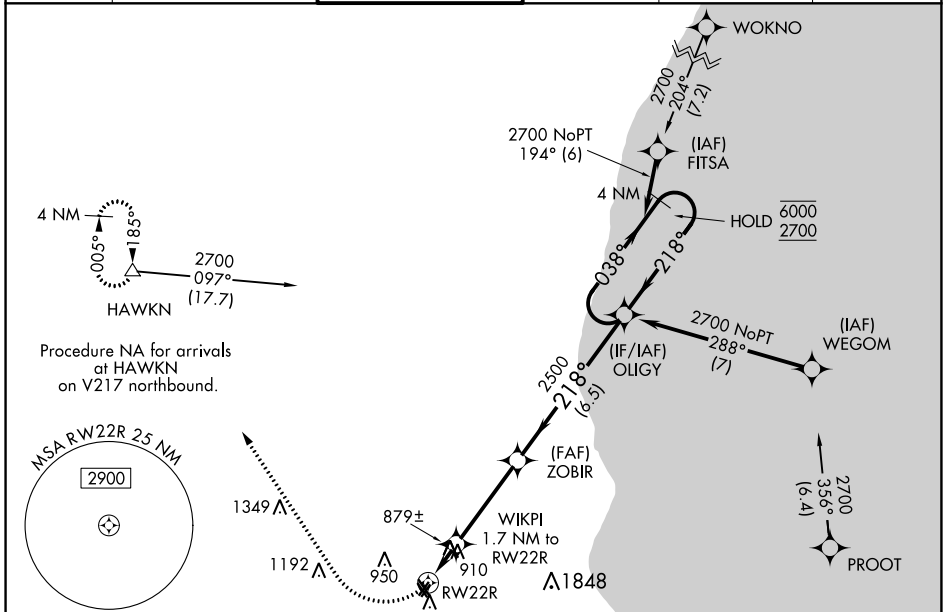
LAWRENCE J TIMMERMAN (MWC)

RNP APCH.

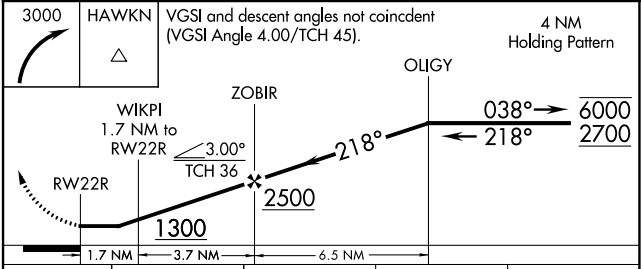
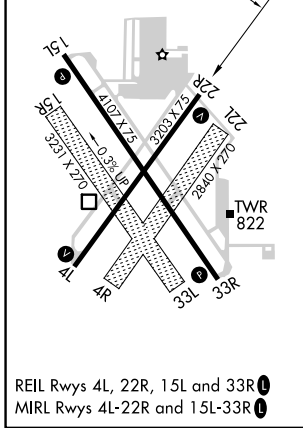
⚠ Circling NA to Rwy 4R, 15R, 22L, and 33L. Rwy 22R helicopter visibility reduction below ¼ SM NA. When local altimeter setting not received, use General Mitchell Intl altimeter setting and increase all MDAs 40 feet and LP and LNAV visibility Cats C and D ½ SM.

MISSED APPROACH: Climbing right turn to 3000 direct HAWKN and hold.

ATIS 128.3	MILWAUKEE APP CON 125.35 307.0	TIMMERMAN TOWER ★ 120.5 (CTAF) 0	GND CON 121.7	CLNC DEL 121.7 (When twr closed)	UNICOM 122.95
----------------------	--	--	-------------------------	---	-------------------------



ELEV 745	TDZE 739
----------	----------



CATEGORY	A	B	C	D
LP MDA	1160-1	421 (500-1)	1160-1¼	421 (500-1¼)
LNAV MDA	1160-1	421 (500-1)	1160-1¼	421 (500-1¼)
CIRCLING	1220-1 475 (500-1)	1340-1 595 (600-1)	1360-1¾ 615 (700-1¾)	1560-2¾ 815 (900-2¾)

EC-3, 22 FEB 2024 to 21 MAR 2024

EC-3, 22 FEB 2024 to 21 MAR 2024

WAAS CH 90520 W04A	APP CRS 038°	Rwy Idg 3203 TDZE 738 Apt Elev 745
--	------------------------	---

RNAV (GPS) RWY 4L

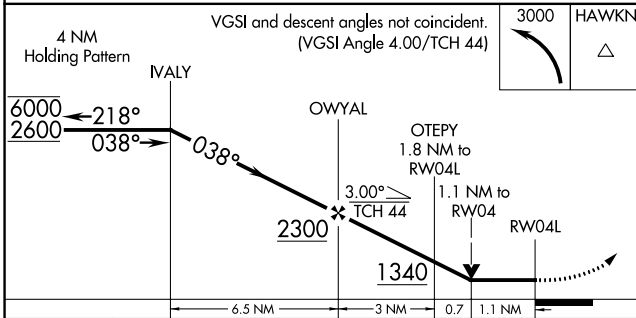
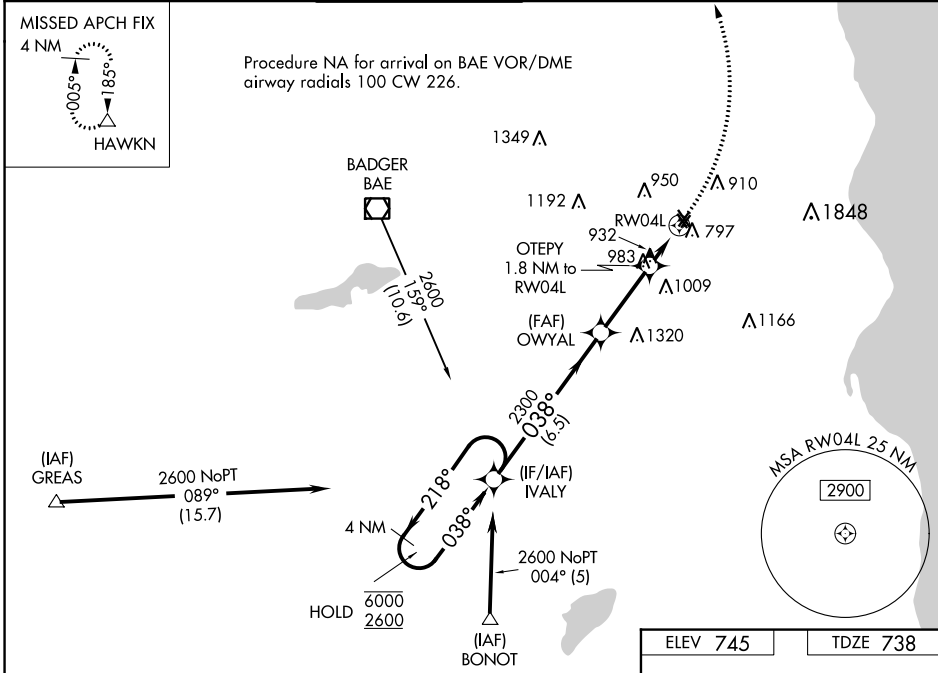
LAWRENCE J TIMMERMAN (MWC)

RNP APCH - GPS.

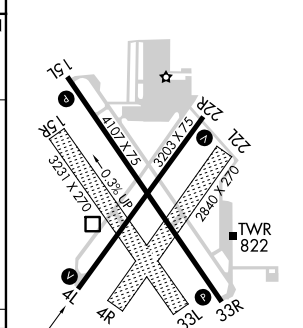
- ▼ Circling NA to Rwys 4R, 15R, 22L and 33L
- ▲ Rwy 4L helicopter visibility reduction below 3/4 SM NA.

MISSED APPROACH:
Climbing left turn to
3000 direct HAWKN
and hold.

ATIS 128.3	MILWAUKEE APP CON 125.35 307.0	TIMMERMAN TOWER ★ 120.5 (CTAF) 0	GND CON 121.7	CLNC DEL 121.7 (When twr closed)	UNICOM 122.95
----------------------	--	--	-------------------------	---	-------------------------



ELEV 745	TDZE 738
----------	----------



CATEGORY	A	B	C	D
LP MDA	1240-1	502 (500-1)	1240-1 ³ / ₈	502 (500-1 ³ / ₈)
LNAV MDA	1300-1	562 (600-1)	1300-1 ⁵ / ₈	562 (600-1 ⁵ / ₈)
CIRCLING	1300-1 555 (600-1)	1340-1 595 (600-1)	1360-1 ³ / ₄ 615 (700-1 ³ / ₄)	1560-2 ³ / ₄ 815 (900-2 ³ / ₄)

REIL Rwys 4L, 15L, 22R, and 33R 0
MIRL Rwys 4L-22R and 15L-33R 0

EC-3, 22 FEB 2024 to 21 MAR 2024

EC-3, 22 FEB 2024 to 21 MAR 2024