

LOC I-MIV 110.9	APP CRS 100°	Rwy Idg TDZE Apt Elev	6003 74 85
---------------------------	------------------------	-----------------------------	---------------------------------------

ILS or LOC RWY 10

MILLVILLE MUNI (MIV)

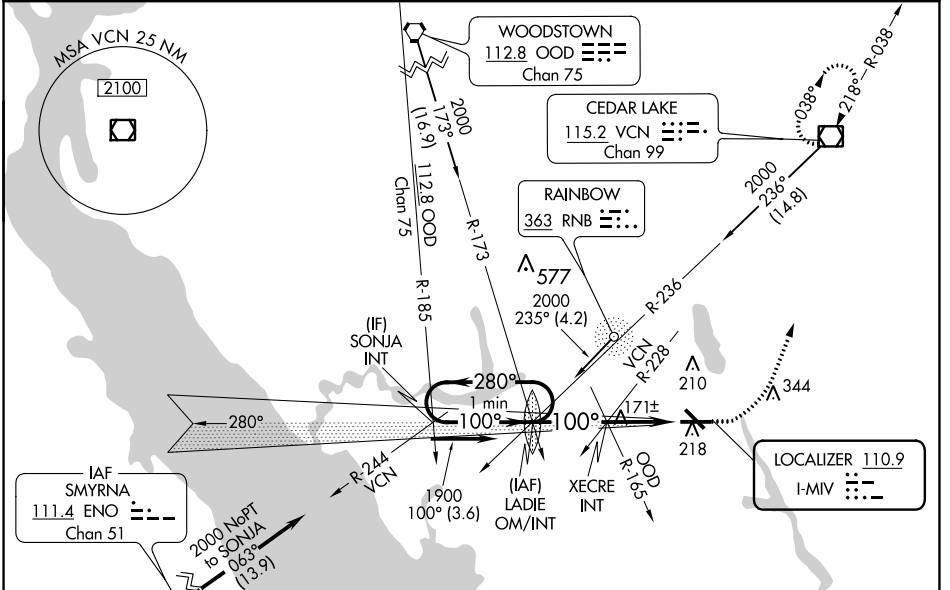
⚠ Inoperative table does not apply. Rwy 10 helicopter visibility reduction below 3/4 SM NA. When local altimeter setting not received, use Atlantic City altimeter setting: increase DA to 407 feet; increase all MDAs 60 feet and visibility Cat B 1/2 SM and Cats C and D 1/2 SM. Autopilot coupled approach NA below 300 MSL.

MALS MISSED APPROACH: Climb to 550 then climbing left turn to 2000 direct VCN VOR/DME and hold.

ASOS
119.6

ATLANTIC CITY APP CON
124.6 327.125

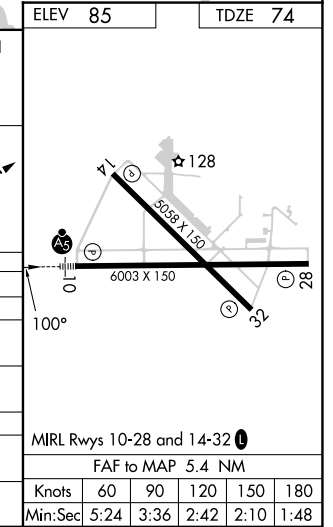
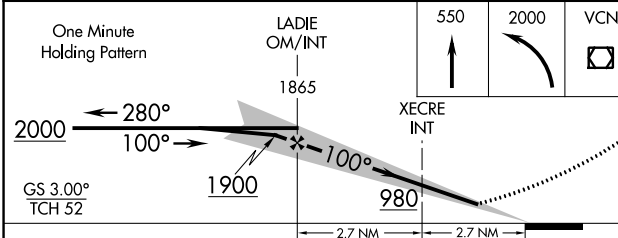
UNICOM
123.0 (CTAF)



NE-2, 22 FEB 2024 to 21 MAR 2024

NE-2, 22 FEB 2024 to 21 MAR 2024

ELEV 85	TDZE 74
---------	---------



CATEGORY	A	B	C	D
S-ILS 10	347-1 273 (300-1)			
S-LOC 10	980-1¼	906 (900-1¼)	980-2½	906 (900-2½)
CIRCLING	980-1¼	895 (900-1¼)	980-2¾	980-3
			895 (900-2¾)	895 (900-3)
XECRE FIX MINIMUMS (DUAL VOR RECEIVERS REQUIRED)				
S-LOC 10	440-1 366 (400-1)			
CIRCLING	520-1	580-1	660-1½	660-2
	435 (500-1)	495 (500-1)	575 (600-1½)	575 (600-2)

MIRL Rwy's 10-28 and 14-32

FAF to MAP 5.4 NM

Knots	60	90	120	150	180
Min:Sec	5:24	3:36	2:42	2:10	1:48

WAAS CH 53723 W10A	APP CRS 101°	Rwy Idg TDZE Apt Elev	6003 74 85
--	------------------------	-----------------------------	---------------------------------------

RNAV (GPS) RWY 10

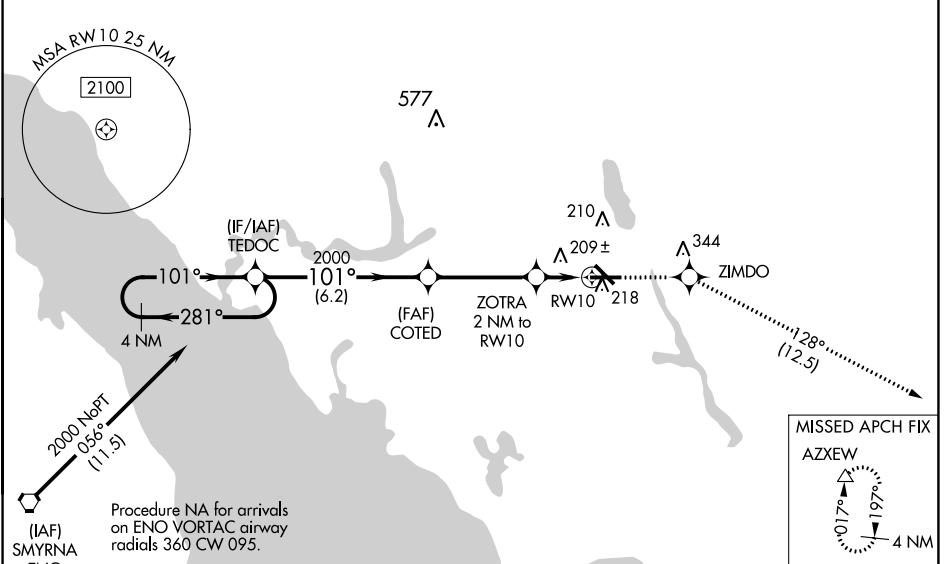
MILLVILLE MUNI (MIV)

RNP APCH-GPS.

⚠ For uncompensated Baro-VNAV systems, LNAV/VNAV NA below -15°C or above 54°C. When local altimeter setting not received, use Atlantic City altimeter setting; increase LPV DA to 330 feet; LNAV/VNAV DA to 571 feet and visibility ¼ SM; increase all MDAs 60 feet and visibility Cat C and D ½ SM. Baro-VNAV and VDP NA when using Atlantic City altimeter setting. For inop MALSRS when using Atlantic City altimeter setting, increase LNAV/VNAV all Cat visibility to 1⅝.

MALSRS MISSED APPROACH: Climb to 2000 direct ZIMDO and on track 128° to AZXEW and hold.

ASOS 119.6	ATLANTIC CITY APP CON 124.6 327-125	UNICOM 123.0 (CTAF) 0
----------------------	---	---------------------------------



NE-2, 22 FEB 2024 to 21 MAR 2024

NE-2, 22 FEB 2024 to 21 MAR 2024

ELEV 85	TDZE 74
---------	---------

4 NM Holding Pattern	TEDOC	COTED	2000	ZIMDO	tr 128°	AZXEW
----------------------	-------	-------	------	-------	---------	-------

2000 ← 281° 101° → 2000

GP 3.00° TCH 52

2000

760

ZOTRA 2 NM to RWY 10

1.1 NM to RWY 10

RWY 10

128

5058 X 150

6003 X 150

101°

CATEGORY	A	B	C	D
LPV DA	274-½ 200 (200-½)			
LNAV/VNAV DA	515-1 441 (500-1)			
LNAV MDA	460-½ 386 (400-½)		460-⅝ 386 (400-⅝)	
CIRCLING	520-1 435 (500-1)	580-1 495 (500-1)	660-1½ 575 (600-1½)	660-2 575 (600-2)

MIRL Rwy 10-28 and 14-32 0

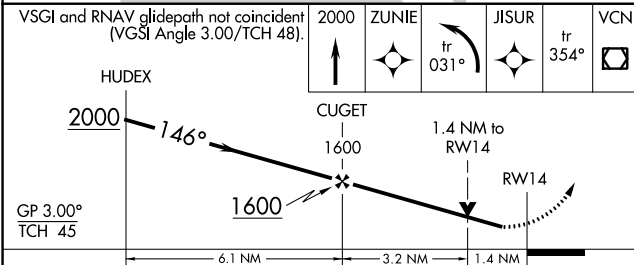
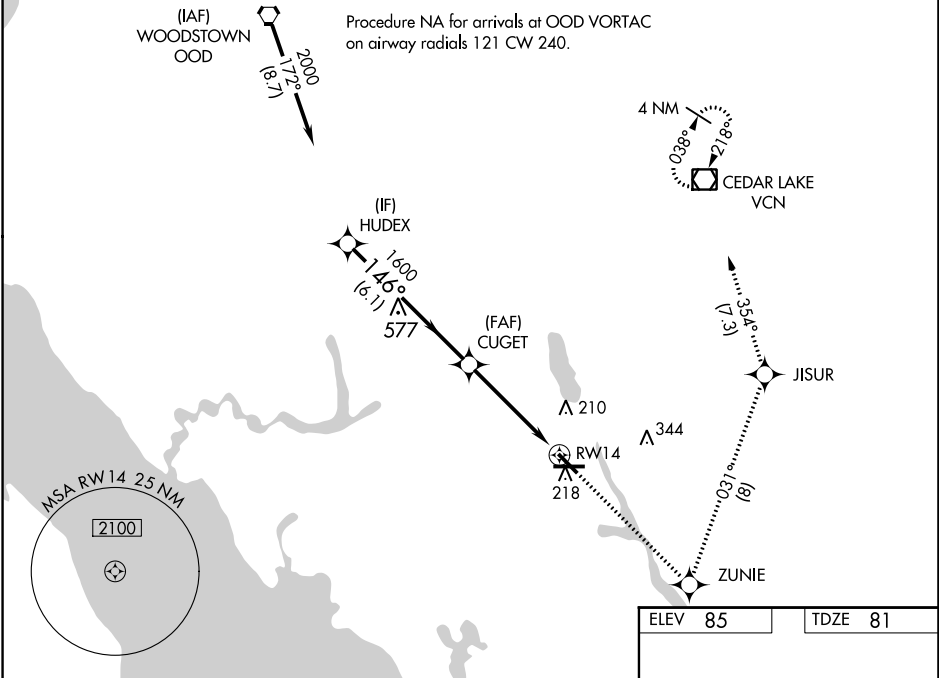
WAAS CH 82000 W14A	APP CRS 146°	Rwy Idg TDZE Apt Elev	5058 81 85
--	------------------------	-----------------------------	---------------------------------------

RNAV (GPS) RWY 14

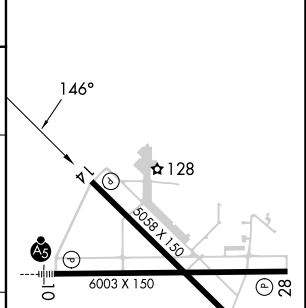
MILLVILLE MUNI (MIV)

RNP APCH-GPS.	<p>▼ Rwy 14 helicopter visibility reduction below $\frac{3}{4}$ SM NA. For uncompensated Baro-VNAV systems, LNAV/VNAV NA below -15°C or above 54°C.</p> <p>▲ MISSED APPROACH: Climb to 2000 direct ZUNIE and left turn on track 031° to JISUR and on track 354° to VCN VOR/DME and hold.</p>
---------------	---

ASOS 119.6	ATLANTIC CITY APP CON 124.6 327.125	UNICOM 123.0 (CTAF) 0
----------------------	---	---------------------------------



ELEV 85	TDZE 81
---------	---------



CATEGORY	A	B	C	D
LPV DA		377- $\frac{7}{8}$	296 (300- $\frac{7}{8}$)	
LNAV/VNAV DA		550-1 $\frac{3}{8}$	469 (500-1 $\frac{3}{8}$)	
LNAV MDA	580-1	499 (500-1)	580-1 $\frac{3}{8}$	499 (500-1 $\frac{3}{8}$)
CIRCLING	580-1	495 (500-1)	660-1 $\frac{1}{2}$ 575 (600-1 $\frac{1}{2}$)	660-2 575 (600-2)

MIRL Rwy's 10-28 and 14-32 0

NE-2, 22 FEB 2024 to 21 MAR 2024

NE-2, 22 FEB 2024 to 21 MAR 2024

WAAS CH 42700 W 28A	APP CRS 281°	Rwy Idg TDZE Apt Elev	6003 85 85
---	------------------------	-----------------------------	---------------------------------------

RNAV (GPS) RWY 28

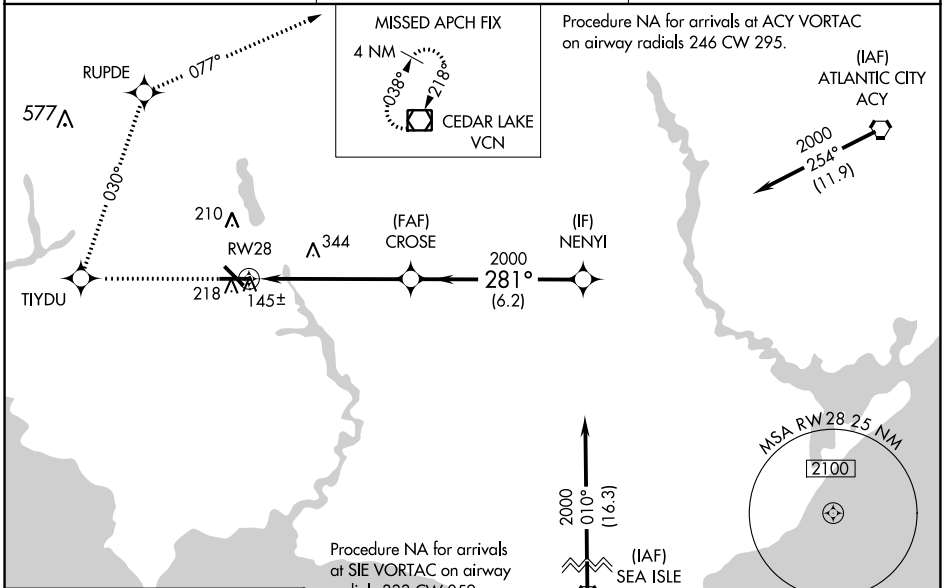
MILLVILLE MUNI (MIV)

RNP APCH-GPS.

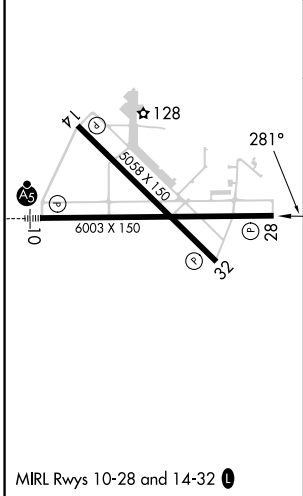
▼ For uncompensated Baro-VNAV systems, LNAV/VNAV NA below -15°C or above 54°C. When local altimeter setting not received, use Atlantic City altimeter setting and increase all DA/MDA 60 feet; increase LNAV/VNAV all Cats, LNAV Cats C/D and Circling Cat C visibility ¼ mile. VDP and Baro-VNAV NA when using Atlantic City altimeter setting.

MISSED APPROACH: Climb to 2000 direct TIYDU and right turn on track 030° to RUPDE and right turn 077° track to VCN VOR/DME and hold.

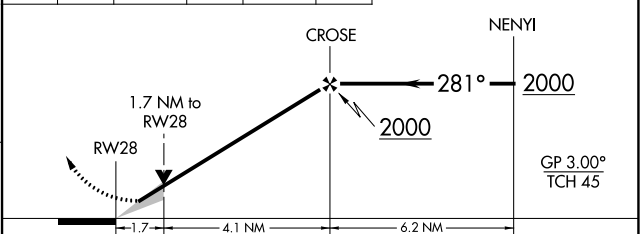
ASOS 119.6	ATLANTIC CITY APP CON 124.6 327.125	UNICOM 123.0 (CTAF) 0
----------------------	---	---------------------------------



ELEV 85	TDZE 85
---------	---------



2000 TIYDU	RUPDE	VCN	VGSI and RNAV glidepath not coincident (VGSI Angle 3.00/TCH 29)
↑	tr 030°	tr 077°	



CATEGORY	A	B	C	D
LPV DA	344-1 259 (300-1)			
LNAV/VNAV DA	405-1 320 (400-1)			
LNAV MDA	640-1 555 (600-1)	640-1½ 555 (600-1½)	640-1¾ 555 (600-1¾)	640-1¾ 555 (600-1¾)
CIRCLING	640-1 555 (600-1)	660-1½ 575 (600-1½)	660-2 575 (600-2)	660-2 575 (600-2)

NE-2, 22 FEB 2024 to 21 MAR 2024

NE-2, 22 FEB 2024 to 21 MAR 2024

WAAS CH 86900 W32A	APP CRS 326°	Rwy Idg TDZE Apt Elev	5058 82 85
---------------------------------	------------------------	-----------------------------	---------------------------------------

RNAV (GPS) RWY 32

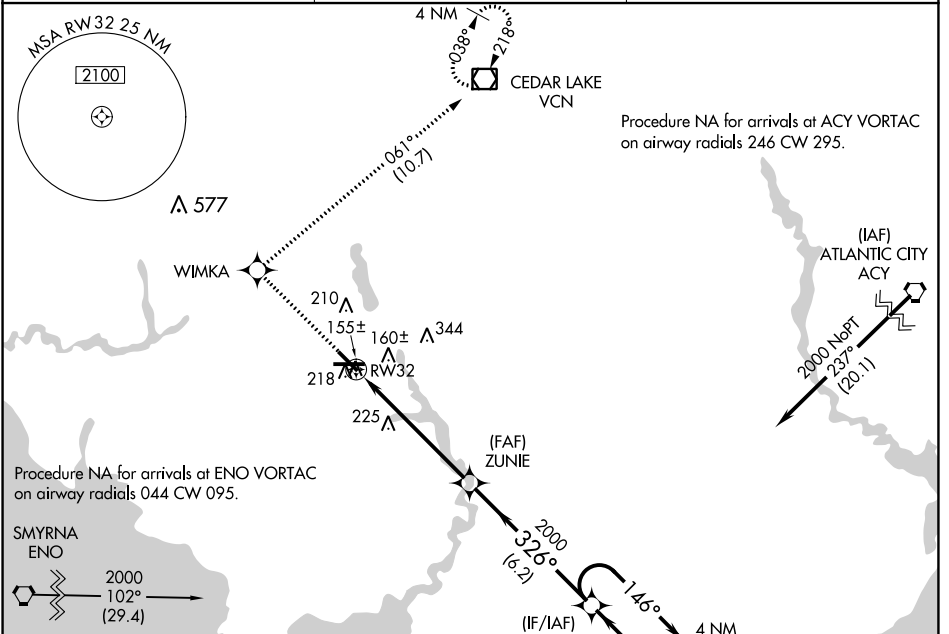
MILLVILLE MUNI (MIV)

RNP APCH-GPS

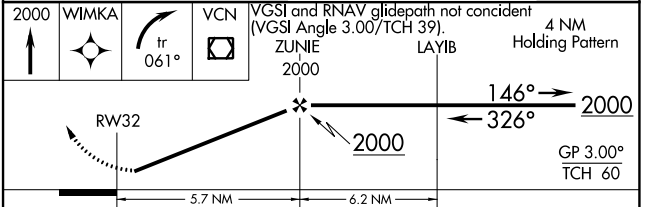
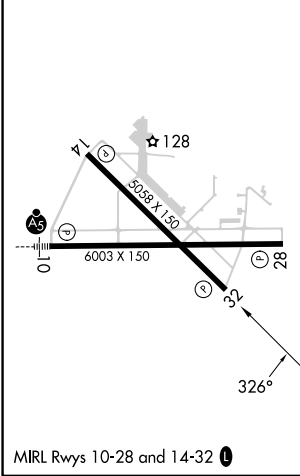
▼ Rwy 32 helicopter visibility reduction below $\frac{3}{4}$ SM NA. Baro-VNAV NA when using Atlantic City altimeter setting. For uncompensated Baro-VNAV systems, LNAV/VNAV NA below -1.5°C or above 54°C . When local altimeter setting not received, use Atlantic City altimeter setting:
▲ NA increase LPV DA to 441 feet; LNAV/VNAV DA to 475 feet and visibility $\frac{1}{8}$ SM; increase all MDAs 60 feet and visibility Cat C and D $\frac{1}{4}$ SM.

MISSED APPROACH: Climb to 2000 direct WIMKA and right turn on track 061° to VCN VOR/DME and hold.

ASOS 119.6	ATLANTIC CITY APP CON 124.6 327.125	UNICOM 123.0 (CTAF) 0
----------------------	---	---------------------------------



ELEV 85	TDZE 82
---------	---------



CATEGORY	A	B	C	D
LPV DA		381-1	299 (300-1)	
LNAV/VNAV DA		415-1	333 (400-1)	
LNAV MDA	480-1	398 (400-1)	480-1 $\frac{1}{8}$	398 (400-1 $\frac{1}{8}$)
CIRCLING	520-1 435 (500-1)	580-1 495 (500-1)	660-1 $\frac{1}{2}$ 575 (600-1 $\frac{1}{2}$)	660-2 575 (600-2)

NE-2, 22 FEB 2024 to 21 MAR 2024

NE-2, 22 FEB 2024 to 21 MAR 2024

VOR/DME VCN 115.2 Chan 99	APP CRS 216°	Rwy Idg TDZE Apt Elev N/A N/A 85
---	------------------------	--

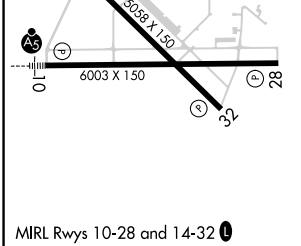
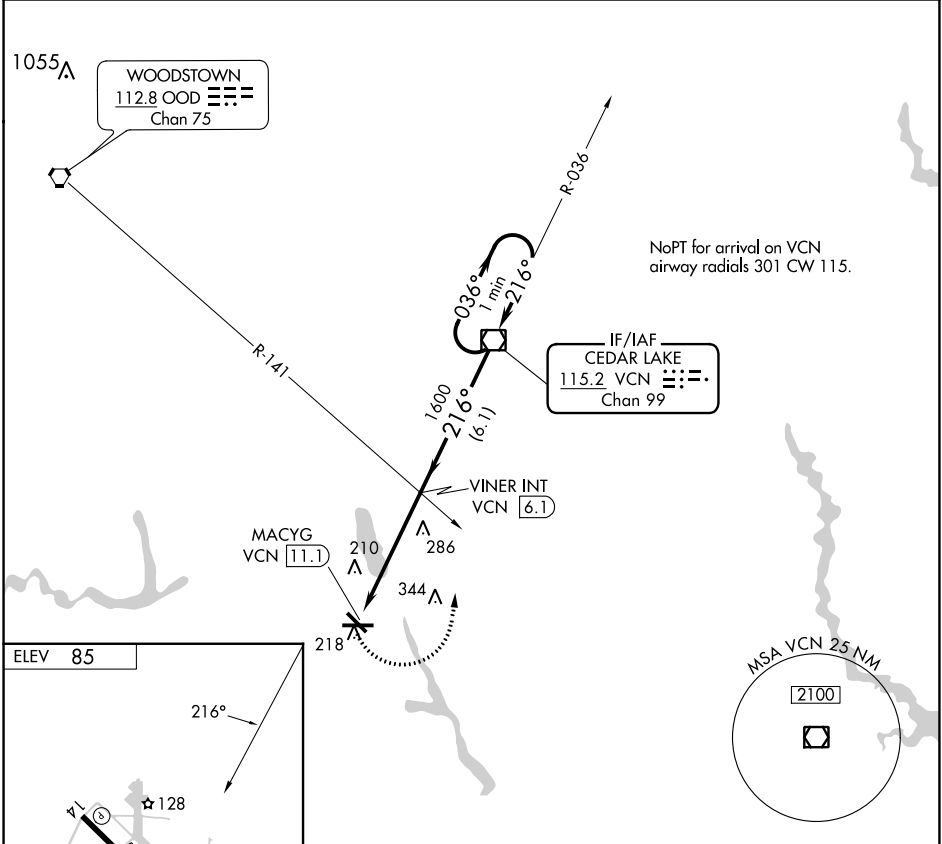
VOR-A

MILLVILLE MUNI (MIV)

▼ When local altimeter setting not received, use Atlantic City altimeter setting and increase all MDAs 60 feet and visibility Circling Cat C ¼ SM.

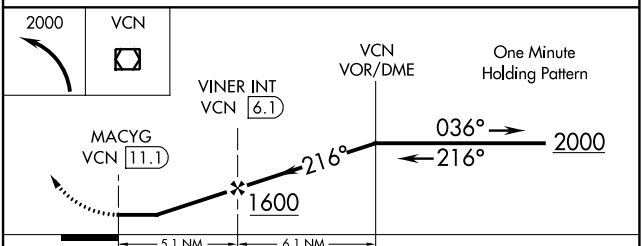
MISSED APPROACH: Climbing left turn to 2000 direct VCN VOR/DME and hold.

ASOS 119.6	ATLANTIC CITY APP CON 124.6 327.125	UNICOM 123.0 (CTAF) 0
----------------------	---	---------------------------------



MIRL Rwy 10-28 and 14-32 0

FAF to MAP 5.1 NM					
Knots	60	90	120	150	180
Min:Sec	5:06	3:24	2:33	2:02	1:42



CATEGORY	A	B	C	D
CIRCLING	600-1	515 (600-1)	660-1½ 575 (600-1½)	660-2 575 (600-2)

NE-2, 22 FEB 2024 to 21 MAR 2024

NE-2, 22 FEB 2024 to 21 MAR 2024