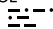
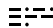


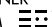
MANCHESTER ONE DEPARTURE

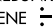
**TOP ALTITUDE:
3000**

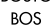
ATIS
119.55
CLNC DEL
135.9
GND CON
121.9
MANCHESTER TOWER
121.3 239.025
BOS DEP CON
124.9 269.075

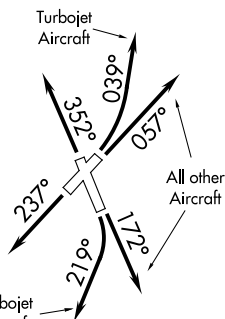
CAMBRIDGE
115.0 CAM 
Chan 97
N42°59.66'-W73°20.64'
L-32-34, H-11-12

CONCORD
112.9 CON 
Chan 76
N43°13.19'-W71°34.53'
L-32

GARDNER
110.6 GDM 
Chan 43
N42°32.76'-W72°03.49'
L-33-34, H-11-12

KENNEBUNK
117.1 ENE 
Chan 118
N43°25.54'-W70°36.81'
L-32, H-11-12

BOSTON
112.7 BOS 
Chan 74
N42°21.45'-W70°59.37'
L-33-34, H-10-11-12



TAKEOFF MINIMUMS:

Rwy 6: Standard.

Rwy 17: 300-1½ or standard with a minimum climb of 270' per NM to 600.

Rwy 24: Standard with a minimum climb of 335' per NM to 800.

Rwy 35: 300-1½ or standard with a minimum climb of 265' per NM to 1400.

NOTE: RADAR required.

NOTE: Chart not to scale.

DEPARTURE ROUTE DESCRIPTION

TAKEOFF RUNWAY 6: TURBOJET AIRCRAFT - Climbing left turn heading 039°, then....

ALL OTHER AIRCRAFT - Climb on heading 057° or as assigned by ATC, then....

TAKEOFF RUNWAY 17: TURBOJET AIRCRAFT - Climbing right turn heading 219°, then....

ALL OTHER AIRCRAFT - Climb on heading 172° or as assigned by ATC, then....

TAKEOFF RUNWAY 24: Climb on heading 237° or as assigned by ATC, then....

TAKEOFF RUNWAY 35: Climb on heading 352° or as assigned by ATC, then....

...expect vectors to assigned route/navaid/fix. Maintain 3000 or as assigned by ATC.

Expect clearance to filed altitude/flight level within five (5) minutes after departure.

MANCHESTER ONE DEPARTURE

PPORT FOUR DEPARTURE (RNAV)

ATIS 119.55
CLNC DEL
135.9
GND CON
121.9
MANCHESTER TOWER
121.3 239.025
BOSTON DEP CON
124.9 269.075

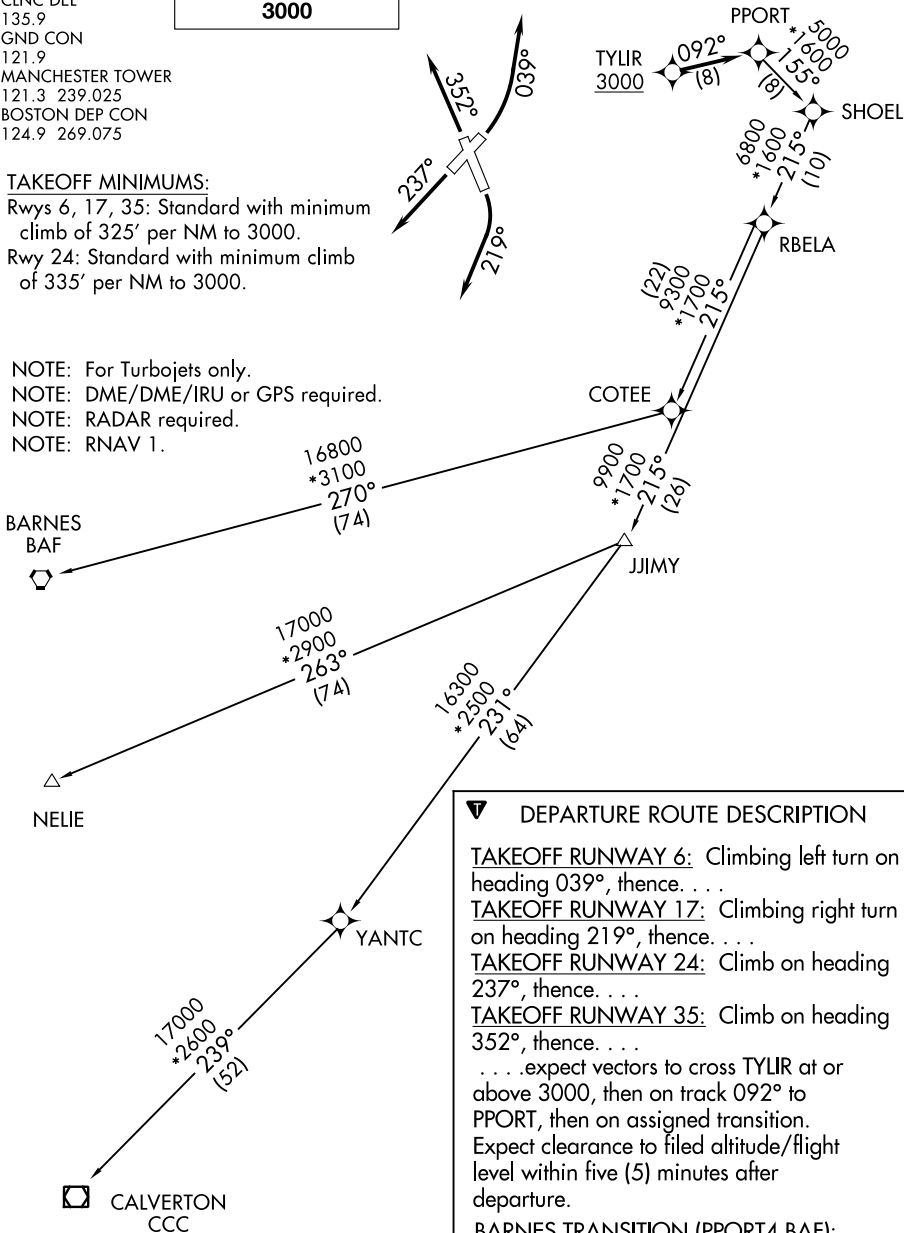
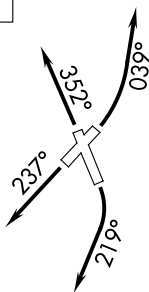
**TOP ALTITUDE:
3000**

TAKEOFF MINIMUMS:

Rwys 6, 17, 35: Standard with minimum climb of 325' per NM to 3000.

Rwy 24: Standard with minimum climb of 335' per NM to 3000.

- NOTE: For Turbojets only.
- NOTE: DME/DME/IRU or GPS required.
- NOTE: RADAR required.
- NOTE: RNAV 1.



DEPARTURE ROUTE DESCRIPTION

TAKEOFF RUNWAY 6: Climbing left turn on heading 039°, thence. . . .

TAKEOFF RUNWAY 17: Climbing right turn on heading 219°, thence. . . .

TAKEOFF RUNWAY 24: Climb on heading 237°, thence. . . .

TAKEOFF RUNWAY 35: Climb on heading 352°, thence. . . .

. . . .expect vectors to cross TYLIR at or above 3000, then on track 092° to PPORT, then on assigned transition. Expect clearance to filed altitude/flight level within five (5) minutes after departure.

BARNES TRANSITION (PPORT4.BAF):

CALVERTON TRANSITION (PPORT4.CCC):

NELIE TRANSITION (PPORT4.NELIE):

NOTE: Chart not to scale.

NE-1, 19 MAY 2022 to 16 JUN 2022

NE-1, 19 MAY 2022 to 16 JUN 2022

PPORT FOUR DEPARTURE (RNAV)