

(HURTT4.HURTT) 19059

AL-499 (FAA)

LYNCHBURG RGNL/PRESTON GLENN FIELD (LYH)

HURTT FOUR DEPARTURE (RNAV)

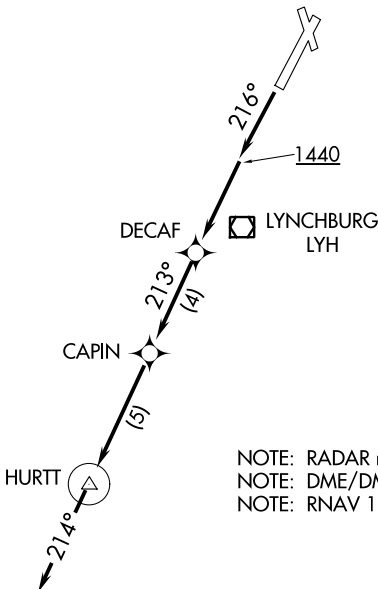
LYNCHBURG, VA

ATIS 119.8
GND CON
121.9
LYNCHBURG TOWER ★
127.65 (CTAF) 257.8
ROANOKE DEP CON
126.9 339.8

TAKEOFF MINIMUMS:
Rwys 4, 17, 35: NA-ATC.
Rwy 22: Standard with minimum
climb of 500' per NM to 1440.

**TOP ALTITUDE:
4000**

ROANOKE
ROA



NOTE: RADAR required.
NOTE: DME/DME/IRU or GPS required.
NOTE: RNAV 1.

NOTE: Chart not to scale.



DEPARTURE ROUTE DESCRIPTION

TAKEOFF RUNWAY 22: Climb heading 216° to 1440, then direct DECAF. Then on depicted route to HURTT, then on heading 214°, expect vectors on course. Maintain 4000 or as assigned by ATC. Expect filed altitude 10 minutes after departure.

HURTT FOUR DEPARTURE (RNAV)
(HURTT4.HURTT) 28FEB19

LYNCHBURG, VA
LYNCHBURG RGNL/PRESTON GLENN FIELD (LYH)

NE-3, 27 JAN 2022 to 24 FEB 2022

NE-3, 27 JAN 2022 to 24 FEB 2022

(LIBRT3.LIBRT) 19003

AL-499 (FAA)

LYNCHBURG RGNL/PRESTON GLENN FIELD (LYH)

LIBRT THREE DEPARTURE (RNAV)

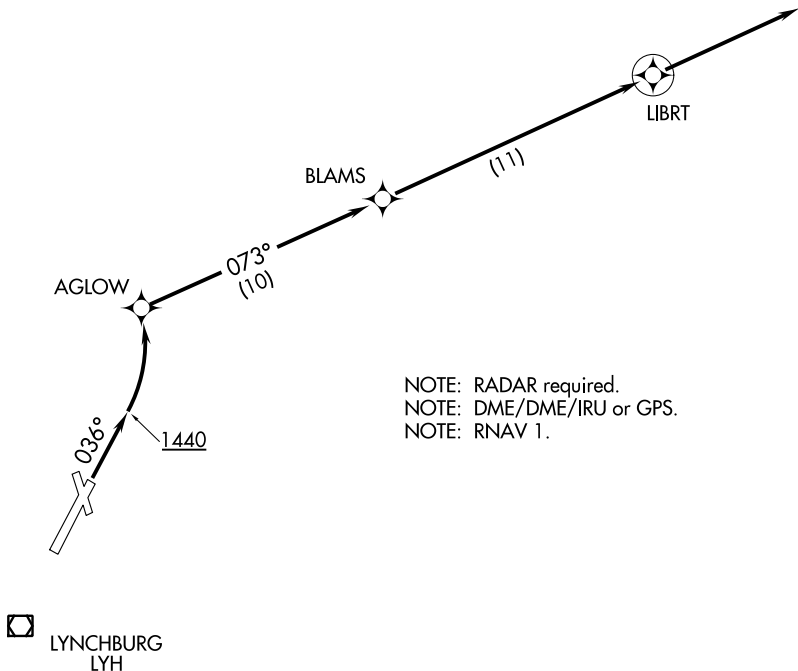
LYNCHBURG, VA

ATIS 119.8
GND CON
121.9
LYNCHBURG TOWER ★
127.65 (CTAF) 257.8
ROANOKE DEP CON
135.0 254.325

TAKEOFF MINIMUMS:

Rwys 17, 22, 35: NA-ATC.
Rwy 4: Standard with minimum
climb of 500' per NM to 4000.

**TOP ALTITUDE:
4000**



NOTE: RADAR required.
NOTE: DME/DME/IRU or GPS.
NOTE: RNAV 1.

NOTE: Chart not to scale.



DEPARTURE ROUTE DESCRIPTION

TAKEOFF RUNWAY 4: Climb heading 036° to 1440, then left turn direct AGLOW, then on depicted route to LIBRT, then on heading 073°, expect vectors on course. Maintain 4000 or as assigned by ATC. Expect filed altitude 10 minutes after departure.

LIBRT THREE DEPARTURE (RNAV)

(LIBRT3.LIBRT) 03JAN19

LYNCHBURG, VA

LYNCHBURG RGNL/PRESTON GLENN FIELD (LYH)

NE-3, 27 JAN 2022 to 24 FEB 2022

NE-3, 27 JAN 2022 to 24 FEB 2022