

LURAY, VIRGINIA

AL-6229 (FAA)

23222

NDB LUA 245	APP CRS 223°	Rwy Idg TDZE Apt Elev	N/A N/A 902
-----------------------	------------------------	-----------------------------	--

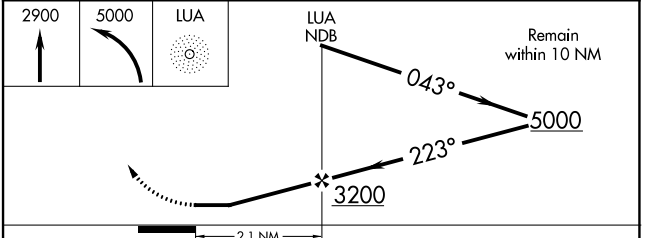
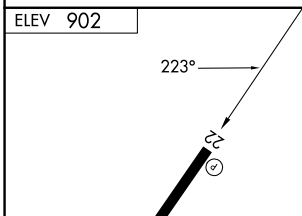
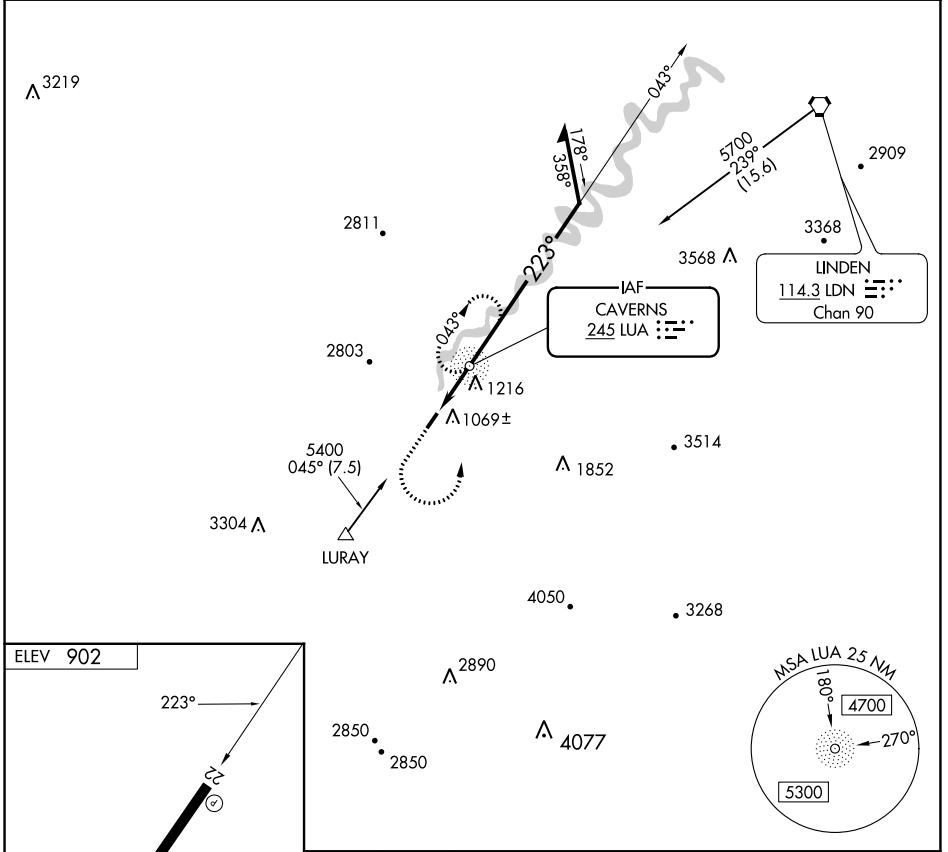
NDB-A

LURAY CAVERNS (LUA)

NA Rwy 22 helicopter visibility reduction below 1 SM NA.

MISSED APPROACH: Climb to 2900 then climbing left turn to 5000 direct LUA NDB and hold, continue climb-in-hold to 5000.

AWOS-3 118.275	WASHINGTON CENTER 133.2 282.2	UNICOM 122.8 (CTAF)
--------------------------	---	-------------------------------



REIL Rwy 4 and 22
HIRL Rwy 4-22

FAF to MAP 2.1 NM					
Knots	60	90	120	150	180
Min:Sec	2:06	1:24	1:03	0:50	0:42

CATEGORY	A	B	C	D
CIRCLING	2360-1¼ 1458 (1500-1¼)	2360-1½ 1458 (1500-1½)	NA	

LURAY, VIRGINIA
Amdt 7C 08SEP22

38°40'N-78°30'W

LURAY CAVERNS (LUA)
NDB-A

NE-3, 22 FEB 2024 to 21 MAR 2024

NE-3, 22 FEB 2024 to 21 MAR 2024

LURAY, VIRGINIA

AL-6229 (FAA)

23222

WAAS CH 77627 W22A	APP CRS 224°	Rwy Idg TDZE Apt Elev	3126 903 902
--	------------------------	-----------------------------	---

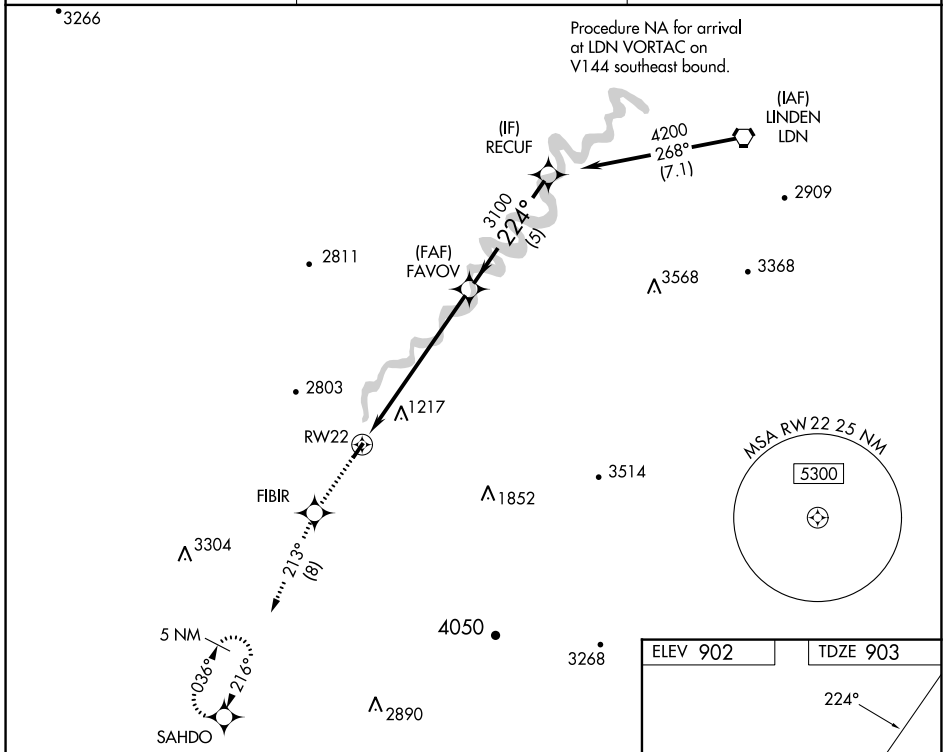
RNAV (GPS) RWY 22

LURAY CAVERNS (LUA)

⚠ DME/DME RNP-0.3 NA. Helicopter visibility reduction below 3/4 SM NA. When local altimeter setting not received, use Staunton/Waynesboro/Harrisonburg altimeter setting and increase all MDA 120 feet; increase LNAV Cat B and Circling Cat B visibility 1/4 mile.

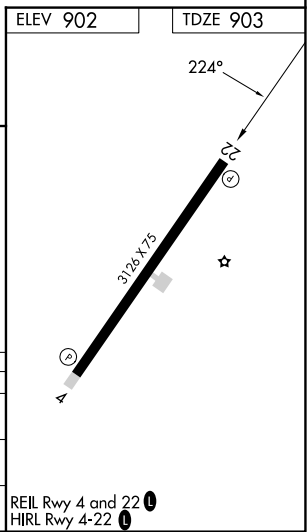
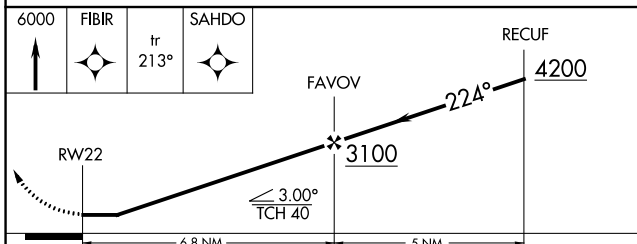
⚠ MISSED APPROACH: Climb to 6000 direct FIBIR and on track 213° to SAHDO and hold, continue climb-in-hold to 6000.

AWOS-3 118.275	WASHINGTON CENTER 133.2 282.2	UNICOM 122.8 (CTAF) 0
--------------------------	---	---------------------------------



NE-3, 22 FEB 2024 to 21 MAR 2024

NE-3, 22 FEB 2024 to 21 MAR 2024



CATEGORY	A	B	C	D
LP MDA	1460-1	557 (600-1)	NA	NA
LNAV MDA	1820-1¼	917 (1000-1¼)	NA	NA
CIRCLING	1820-1¼	918 (1000-1¼)	NA	NA

LURAY, VIRGINIA
Amdt 1C 25MAR21

38°40'N-78°30'W

RNAV (GPS) RWY 22

REIL Rwy 4 and 22 0
HIRL Rwy 4-22 0

LURAY, VIRGINIA

AL-6229 (FAA)

23222

WAAS CH 65727 W04A	APP CRS 044°	Rwy Idg TDZE Apt Elev	3126 903 902
--	------------------------	-----------------------------	---

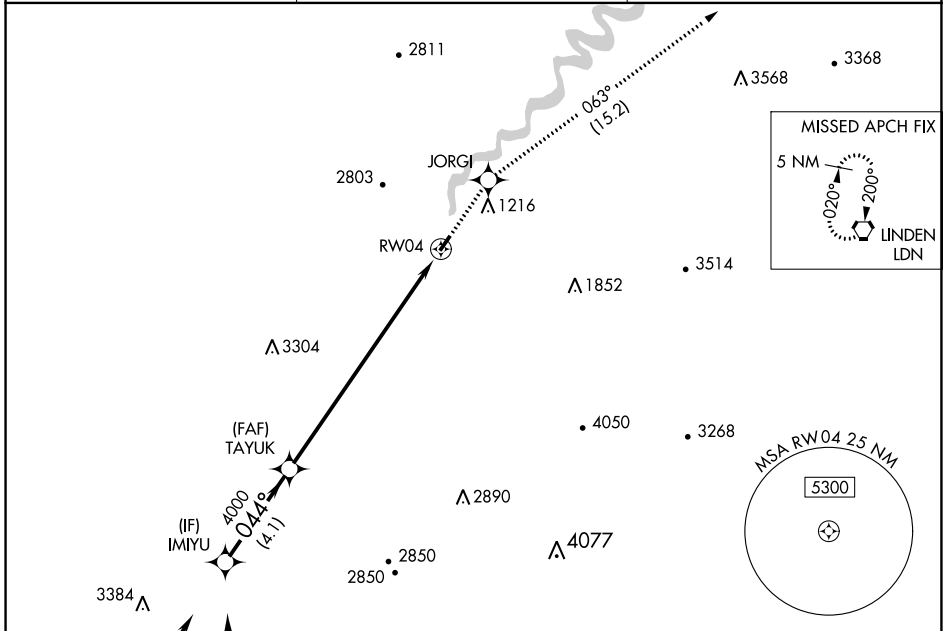
RNAV (GPS) RWY 4

LURAY CAVERNS (LUA)

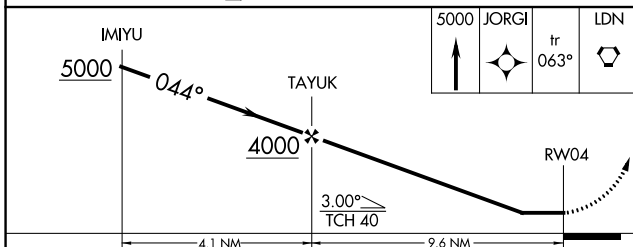
⚠ DME/DME RNP-0.3 NA. Helicopter visibility reduction below ¾ SM NA. When local altimeter setting not received, use Staunton/Waynesboro/Harrisonburg altimeter setting and increase all MDA 120 feet.

⚠ MISSED APPROACH: Climb to 5000 direct JORGI and on track 063° to LDN VORTAC and hold.

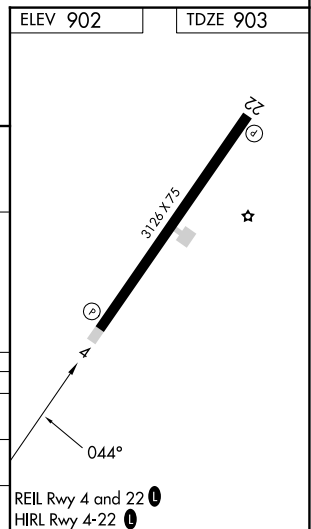
AWOS-3 118.275	WASHINGTON CENTER 133.2 282.2	UNICOM 122.8 (CTAF) 0
--------------------------	---	---------------------------------



ELEV 902	TDZE 903
----------	----------



CATEGORY	A	B	C	D
LP MDA	2180-1¼ 1277 (1300-1¼)	2180-1½ 1277 (1300-1½)	NA	NA
LNAV MDA	2240-1¼ 1337 (1400-1¼)	2240-1½ 1337 (1400-1½)	NA	NA
CIRCLING	2240-1¼ 1338 (1400-1¼)	2240-1½ 1338 (1400-1½)	NA	NA



LURAY, VIRGINIA
Orig-C 25MAR21

38°40'N-78°30'W

RNAV (GPS) RWY 4

NE-3, 22 FEB 2024 to 21 MAR 2024

NE-3, 22 FEB 2024 to 21 MAR 2024

LURAY, VIRGINIA

AL-6229 (FAA)

23222

VORTAC LDN 114.3 Chan 90	APP CRS 237°	Rwy Idg TDZE Apt Elev N/A N/A 902
--	------------------------	---

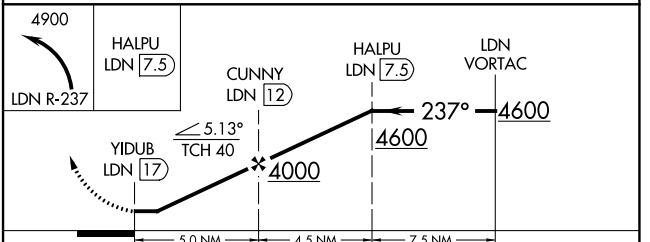
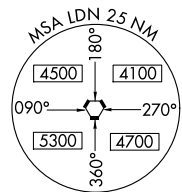
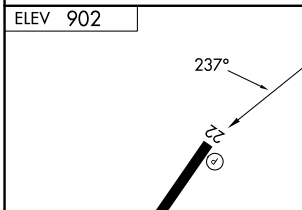
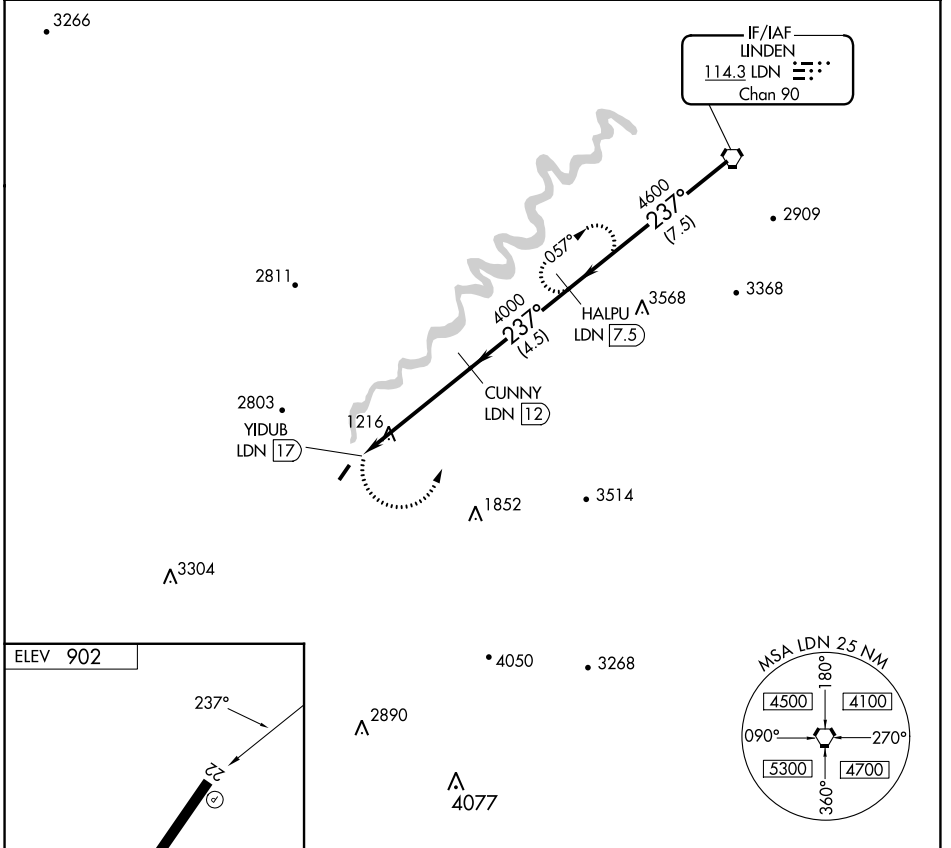
VOR/DME-B

LURAY CAVERNS (LUA)

⚠ Visibility reduction by helicopters NA. When local altimeter setting not received, use Staunton/Waynesboro/Harrisburg altimeter setting and increase all MDA 120 feet.

MISSED APPROACH: Climbing left turn to 4900 on LDN VORTAC R-237 to HALPU/LDN 7.5 DME and hold, continue climb-in-hold to 4900.

AWOS-3 118.275	WASHINGTON CENTER 133.2 282.2	UNICOM 122.8 (CTAF) ①
--------------------------	---	--



CATEGORY	A	B	C	D
CIRCLING	2200-1¼ 1298 (1300-1¼)	2200-1½ 1298 (1300-1½)	NA	NA

REIL Rwy 4 and 22 **①**
HIRL Rwy 4-22 **①**

LURAY, VIRGINIA
Amdt 3B 25MAR21

38°40'N-78°30'W

LURAY CAVERNS (LUA)
VOR/DME-B

NE-3, 22 FEB 2024 to 21 MAR 2024

NE-3, 22 FEB 2024 to 21 MAR 2024