

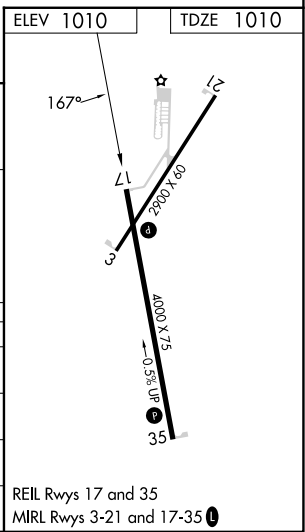
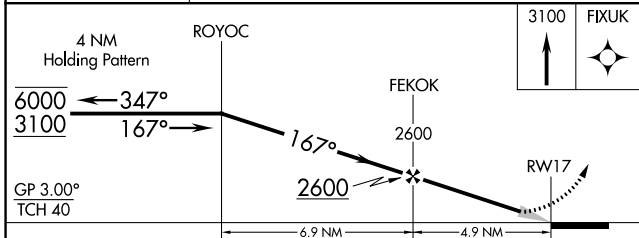
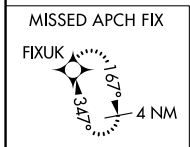
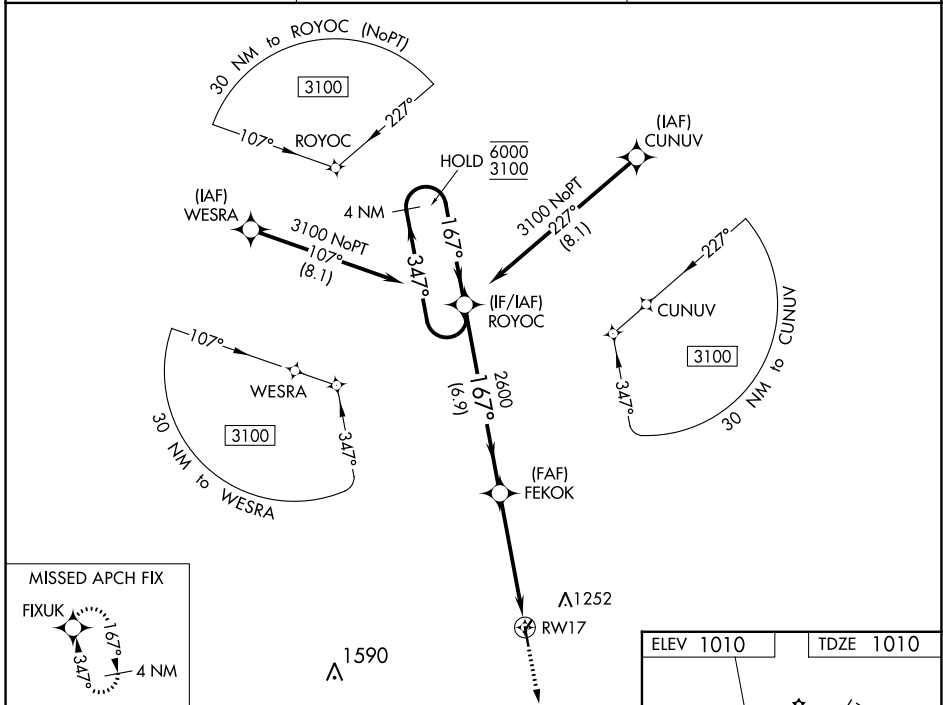
WAAS CH 97336 W17A	APP CRS 167°	Rwy Idg TDZE Apt Elev	4000 1010 1010
--	------------------------	-----------------------------	---

RNAV (GPS) RWY 17

LAMAR MUNI (LLU)

RNP APCH.	MISSED APPROACH: Climb to 3100 direct FIXUK and hold.
<p>⚠ Circling Rwy 21 NA at night. Baro-VNAV NA. ⚠ NA Use Joplin altimeter setting.</p>	

JLN ASOS 120.85	KANSAS CITY CENTER 128.6 282.325	CTAF 122.9
---------------------------	--	----------------------



CATEGORY	A	B	C	D
LPV DA	1315-1 305 (400-1)			NA
LNAV/VNAV DA	1367-1¼ 357 (400-1¼)			NA
LNAV MDA	1520-1 510 (600-1)	510 (600-1)	1520-1⅜ 510 (600-1⅜)	NA
CIRCLING	1520-1 510 (600-1)	1620-1 610 (700-1)	1620-1¾ 610 (700-1¾)	NA

NC-3, 22 FEB 2024 to 21 MAR 2024

NC-3, 22 FEB 2024 to 21 MAR 2024

WAAS CH 45536 W03A	APP CRS 031°	Rwy Idg 2900 TDZE 1007 Apt Elev 1010
--	------------------------	---

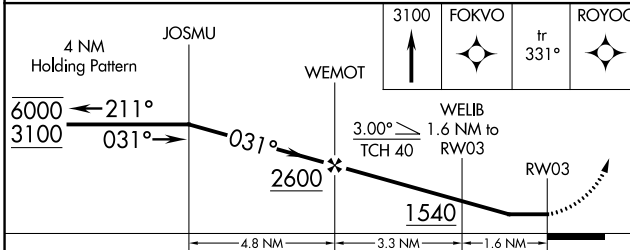
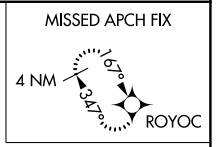
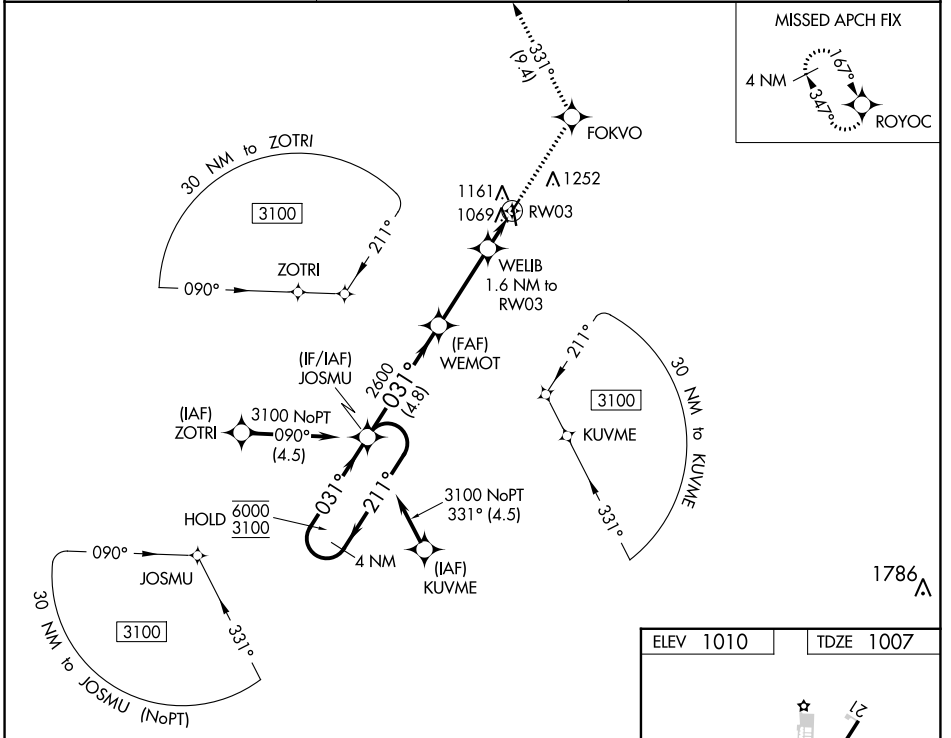
RNAV (GPS) RWY 3

LAMAR MUNI (L.L.U)

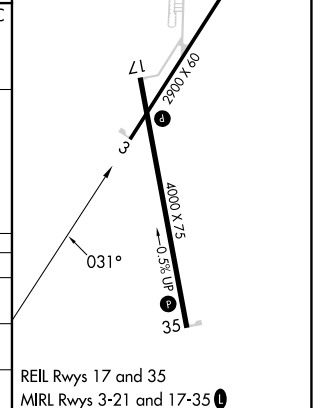
RNP APCH.
 ▼ Circling Rwy 21 NA at night. Use Joplin altimeter setting.
 ▲ NA Rwy 3 helicopter visibility reduction below ¼ SM NA.

MISSED APPROACH: Climb to 3100 direct FOKVO and on track 331° to ROYOC and hold.

JLN ASOS 120.85	KANSAS CITY CENTER 128.6 282.325	CTAF 122.9
---------------------------	--	----------------------



ELEV 1010	TDZE 1007
-----------	-----------



CATEGORY	A	B	C	D
LP MDA	1380-1	373 (400-1)	NA	
LNAV MDA	1480-1	473 (500-1)	NA	
☐ CIRCLING	1520-1 510 (600-1)	1620-1 610 (700-1)	NA	

REIL Rwy 35 and 17
 MIRL Rwy 3-21 and 17-35

NC-3, 22 FEB 2024 to 21 MAR 2024

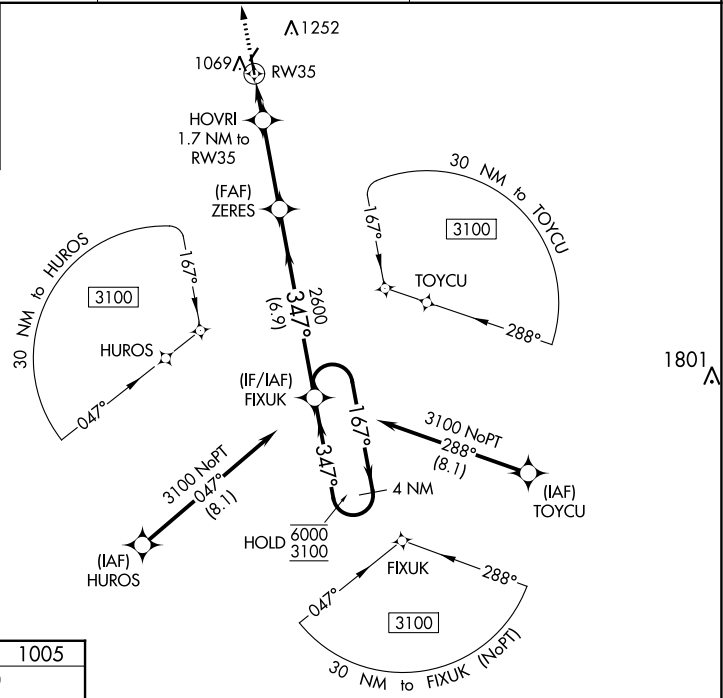
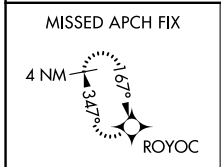
NC-3, 22 FEB 2024 to 21 MAR 2024

WAAS CH 77536 W35A	APP CRS 347°	Rwy Idg TDZE Apt Elev	4000 1005 1010
--	------------------------	-----------------------------	---

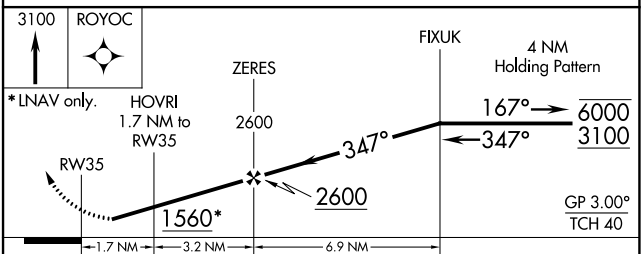
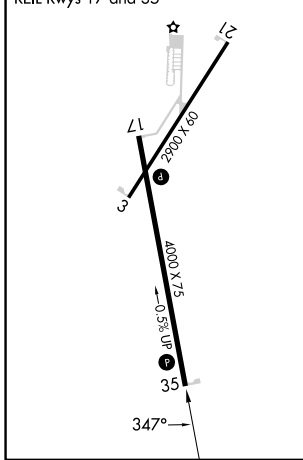
RNAV (GPS) RWY 35

LAMAR MUNI (LLU)

RNP APCH.		MISSED APPROACH: Climb to 3100 direct ROYOC and hold.
<p>▼ Rwy 35 helicopter visibility reduction below 3/4 SM NA. Baro-VNAV NA.</p> <p>▲ NA Use Joplin altimeter setting. Circling Rwy 21 NA at night.</p>		
JLN ASOS 120.85	KANSAS CITY CENTER 128.6 282.325	CTAF 122.9



ELEV 1010	TDZE 1005
MIRL Rws 3-21 and 17-35	
REIL Rws 17 and 35	



CATEGORY	A	B	C	D
LPV DA		1310-1	305 (300-1)	NA
LNAV/VNAV DA		1310-1	305 (300-1)	NA
LNAV MDA		1380-1	375 (400-1)	NA
C CIRCLING	1520-1 510 (600-1)	1620-1 610 (700-1)	1620-1 3/4 610 (700-1 3/4)	NA

NC-3, 22 FEB 2024 to 21 MAR 2024

NC-3, 22 FEB 2024 to 21 MAR 2024