

WAAS CH 77631 W17A	APP CRS 173°	Rwy Idg TDZE Apt Elev	6110 3508 3514
--	------------------------	-----------------------------	---

RNAV (GPS) RWY 17

LEVELLAND MUNI (LLN)

RNP APCH.

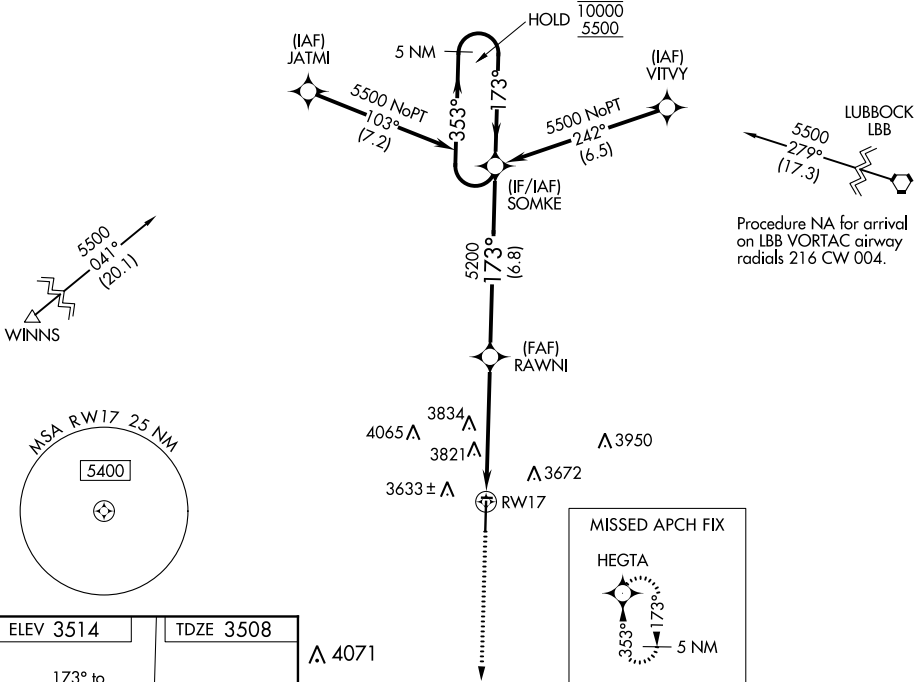
- ▼ Rwy 17 helicopter visibility reduction below 3/4 SM
- ▲ NA Baro-VNAV NA. Use Lubbock altimeter setting.

MISSED APPROACH: Climb to 5500 direct HEGTA and hold.

LBB ASOS
125.3

LUBBOCK APP CON
119.2 351.8

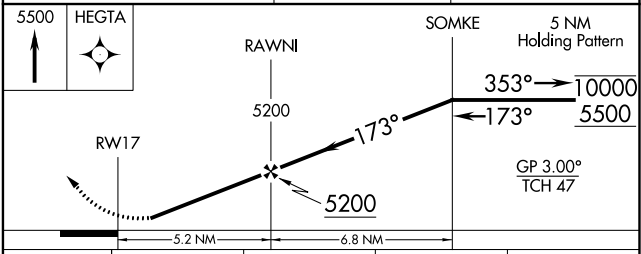
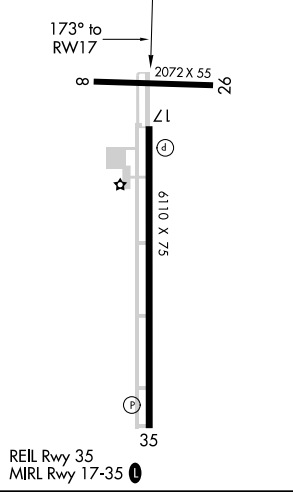
UNICOM
122.8 (CTAF) 0



SC-2, 18 JUN 2020 to 16 JUL 2020

SC-2, 18 JUN 2020 to 16 JUL 2020

ELEV 3514	TDZE 3508
-----------	-----------



CATEGORY	A	B	C	D
LPV DA		3856-1 1/8	348 (400-1 1/8)	
LNAV/VNAV DA		4268-2 3/4	760 (800-2 3/4)	
LNAV MDA	4180-1	672 (700-1)	4180-1 7/8	672 (700-1 7/8)
CIRCLING	4180-1 666 (700-1)	4300-1 786 (800-1)	4320-2 1/4 806 (900-2 1/4)	4320-2 1/2 806 (900-2 1/2)

LEVELLAND, TEXAS

AL-6570 (FAA)

19283

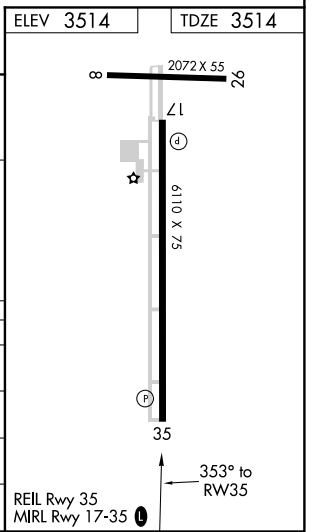
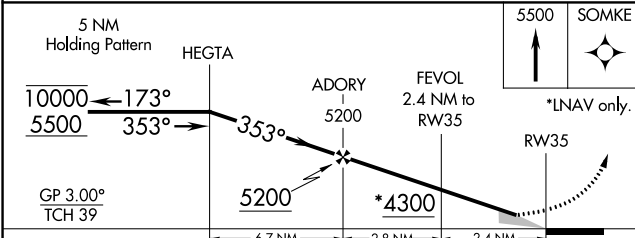
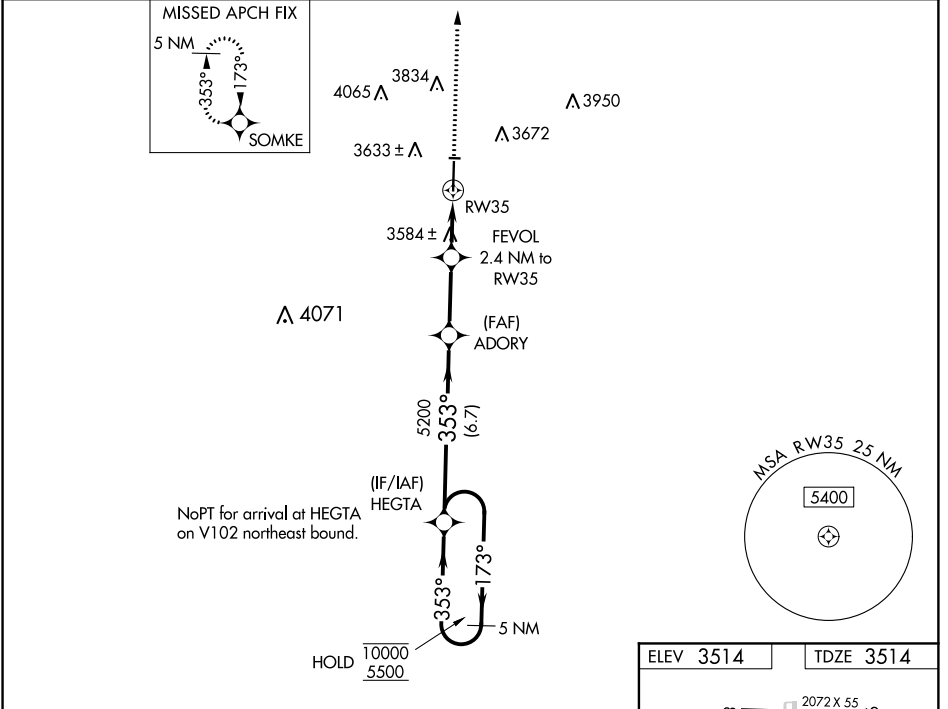
WAAS CH 65719 W35A	APP CRS 353°	Rwy Idg TDZE 3514 Apt Elev 3514
--	------------------------	---

RNAV (GPS) RWY 35

LEVELLAND MUNI (LLN)

RNP APCH.	MISSED APPROACH: Climb to 5500 direct SOMKE and hold.
NA	Baro-VNAV NA. Use Lubbock altimeter setting.

LBB ASOS 125.3	LUBBOCK APP CON 119.2 351.8	UNICOM 122.8 (CTAF)
--------------------------	---------------------------------------	-------------------------------



CATEGORY	A	B	C	D
LPV DA		3862-1 $\frac{1}{8}$	348 (400-1 $\frac{1}{8}$)	
LNAV/VNAV DA		3862-1 $\frac{1}{8}$	348 (400-1 $\frac{1}{8}$)	
LNAV MDA	3940-1	426 (500-1)	3940-1 $\frac{1}{4}$	426 (500-1 $\frac{1}{4}$)
CIRCLING	4100-1 586 (600-1)	4300-1 $\frac{1}{4}$ 786 (800-1 $\frac{1}{4}$)	4320-2 $\frac{1}{4}$ 806 (900-2 $\frac{1}{4}$)	4320-2 $\frac{1}{2}$ 806 (900-2 $\frac{1}{2}$)

LEVELLAND, TEXAS
Amdt 1B 20JUN19

33°33'N-102°22'W

RNAV (GPS) RWY 35

LEVELLAND MUNI (LLN)

SC-2, 18 JUN 2020 to 16 JUL 2020

SC-2, 18 JUN 2020 to 16 JUL 2020