

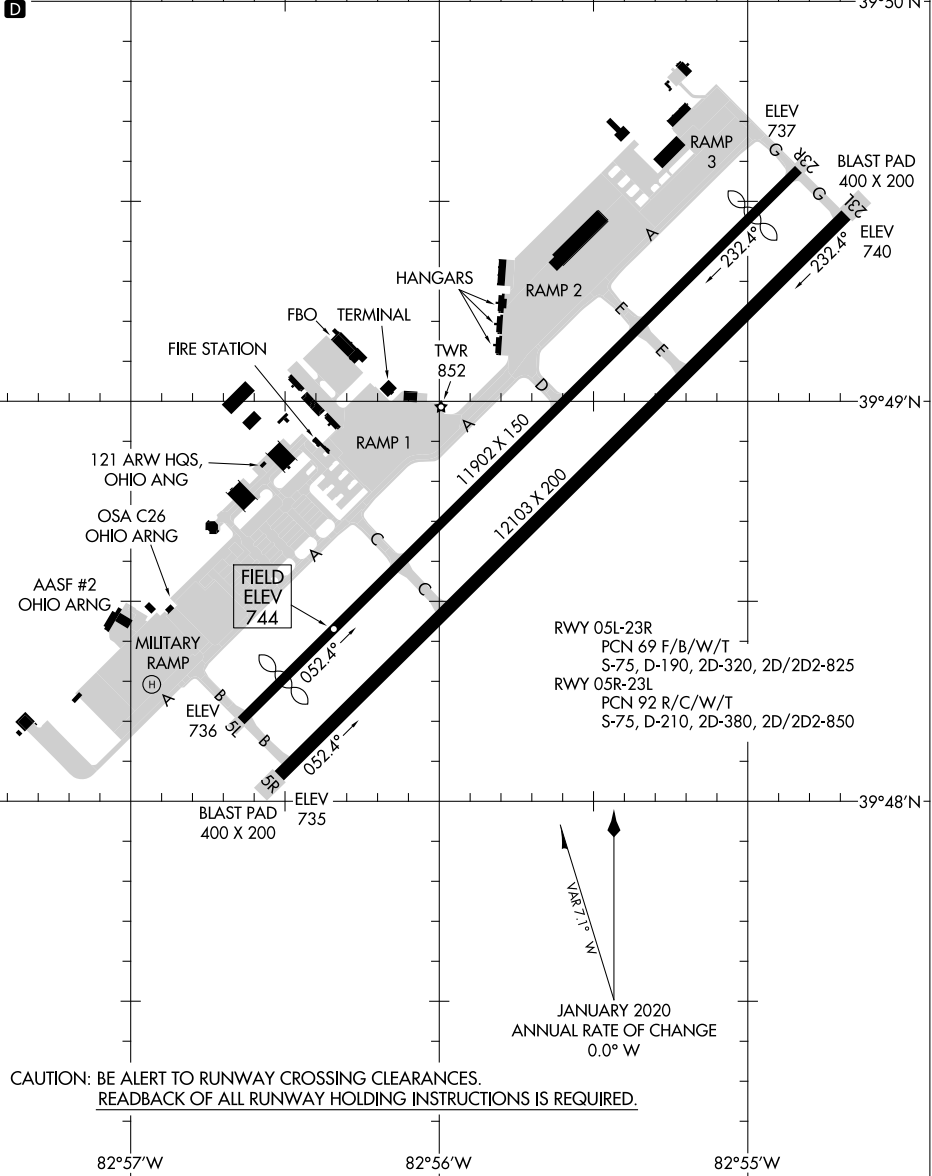
23054

AIRPORT DIAGRAM

AL-6846 (FAA)

RICKENBACKER INTL (LCK)
COLUMBUS, OHIO

ATIS
 132.75
 RICK TOWER
 120.05 348.4
 GND CON
 125.275 275.8
 CLNC DEL
 125.275 275.8



EC-2, 22 FEB 2024 to 21 MAR 2024

EC-2, 22 FEB 2024 to 21 MAR 2024

CAUTION: BE ALERT TO RUNWAY CROSSING CLEARANCES.
 READBACK OF ALL RUNWAY HOLDING INSTRUCTIONS IS REQUIRED.

AIRPORT DIAGRAM

23054

COLUMBUS, OHIO
RICKENBACKER INTL (LCK)

COLUMBUS, OHIO

AL-6846 (FAA)

23054

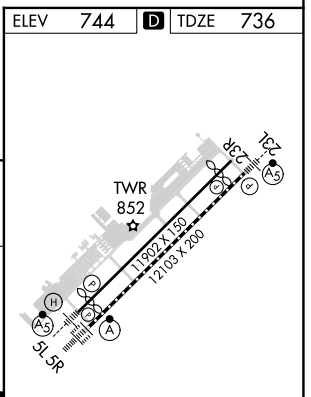
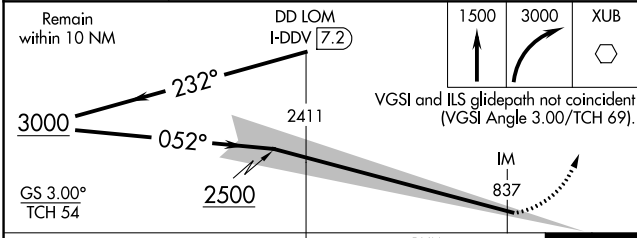
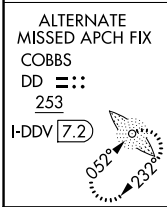
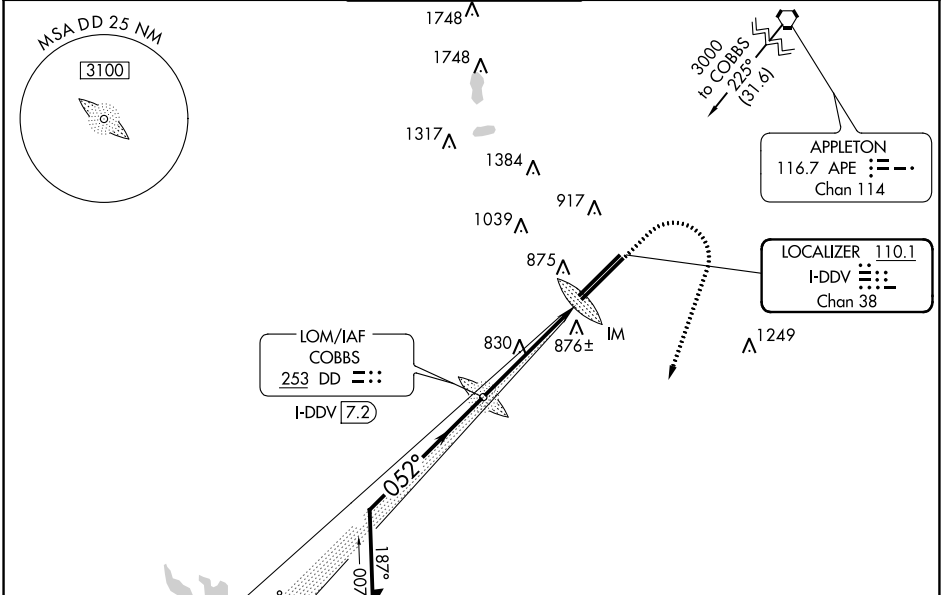
LOC/DME I-DDV 110.1 Chan 38	APP CRS 052°	Rwy Idg 12103 TDZE 736 Apt Elev 744
---	------------------------	--

ILS RWY 5R (CAT II)

RICKENBACKER INTL (LCK)

ADF or DME required. NA	ALSIF-2 	MISSED APPROACH: Climb to 1500 then climbing right turn to 3000 direct XUB VOR and hold.
-----------------------------------	-------------	--

ATIS 132.75	COLUMBUS APP CON 134.0 279.6	RICK TOWER 120.05 348.4	GND CON 125.275 275.8	CLNC DEL 125.275 275.8
-----------------------	--	-----------------------------------	---------------------------------	----------------------------------



CATEGORY	A	B	C	D
S-ILS 5R	RA 100/12 100 DA 836			

CATEGORY II ILS - SPECIAL AIRCREW & AIRCRAFT CERTIFICATION REQUIRED

TDZ/CL Rwy 5R
REIL Rwy 23R
HIRL Rwys 5L-23R and 5R-23L

EC-2, 22 FEB 2024 to 21 MAR 2024

EC-2, 22 FEB 2024 to 21 MAR 2024

COLUMBUS, OHIO
Amdt 3E 09SEP21

39°49'N-82°56'W

RICKENBACKER INTL (LCK)
ILS RWY 5R (CAT II)

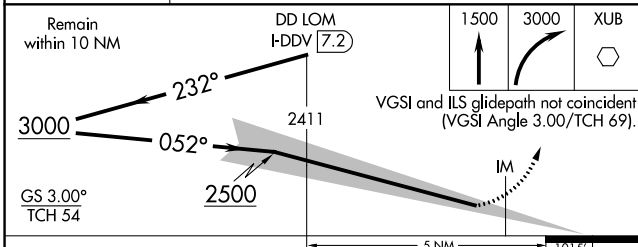
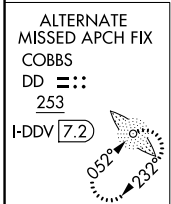
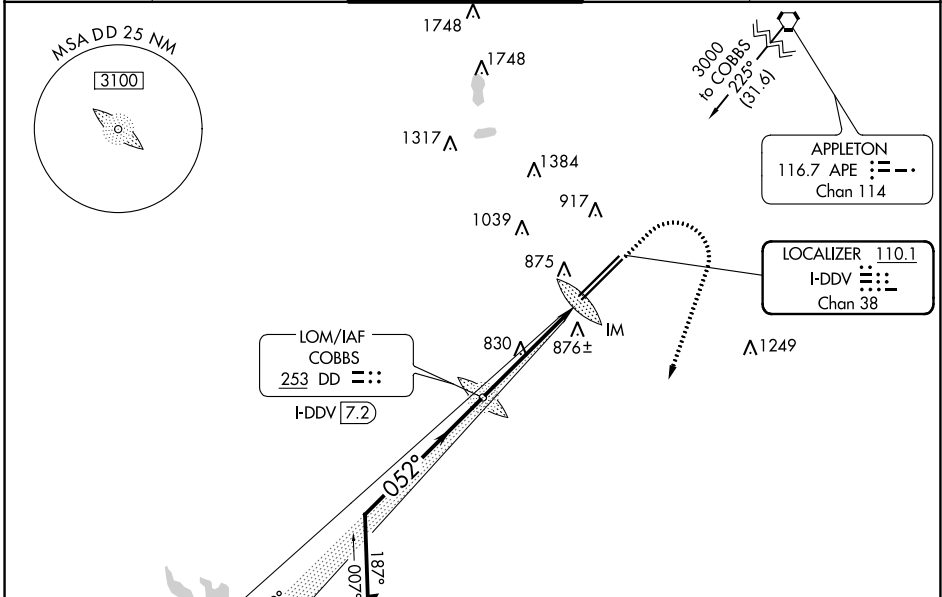
LOC/DME I-DDV 110.1 Chan 38	APP CRS 052°	Rwy Idg 12103 TDZE 736 Apt Elev 744
---	------------------------	--

ILS RWY 5R (SA CAT I)

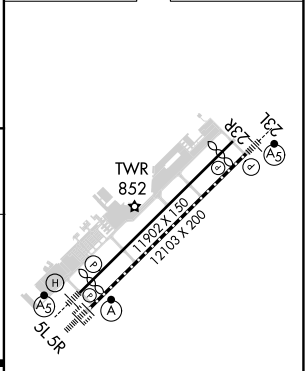
RICKENBACKER INTL (LCK)

ADF or DME required.	ALSF-2	MISSED APPROACH: Climb to 1500 then climbing right turn to 3000 direct XUB VOR and hold.
NA Requires specific OPSPEC, MSPEC or LOA approval.		

ATIS 132.75	COLUMBUS APP CON 134.0 279.6	RICK TOWER 120.05 348.4	GND CON 125.275 275.8	CLNC DEL 125.275 275.8
-----------------------	--	-----------------------------------	---------------------------------	----------------------------------



ELEV 744	D	TDZE 736
----------	---	----------



CATEGORY	A	B	C	D
S-ILS 5R	RA 150/14 150 DA 886			

SA CATEGORY I ILS - SPECIAL AIRCREW & AIRCRAFT CERTIFICATION REQUIRED

TDZ/CL Rwy 5R
REIL Rwy 23R
HIRL Rwys 5L-23R and 5R-23L

EC-2, 22 FEB 2024 to 21 MAR 2024

EC-2, 22 FEB 2024 to 21 MAR 2024

LOC I-LCK 110.1	APP CRS 232°	Rwy Idg	23L	23R
		TDZE	740	743
		Apt Elev	744	744

ILS or LOC RWY 23L

RICKENBACKER INTL (LCK)

⚠ Circling NA northwest of Rwy 5L-23R. When local altimeter setting not received, use John Glenn Columbus Intl altimeter setting: increase DA to 975 feet; increase all MDAs 40 feet and S-LOC 23L visibility Cats C/D to RVR 5500 and Circling visibility Cat D to 2 1/4 SM. Autopilot coupled approach NA below 1000 MSL.

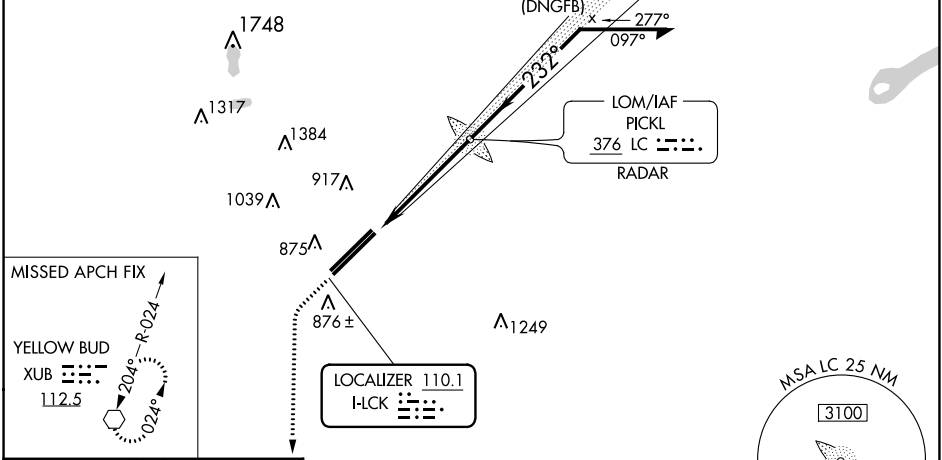
MALSR
 MISSED APPROACH: Climb to 3000, then left turn direct XUB VOR and hold.

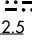
ATIS 132.75	COLUMBUS APP CON 134.0 279.6	RICK TOWER 120.05 348.4	GND CON 125.275 275.8	CLNC DEL 125.275 275.8
-----------------------	--	-----------------------------------	---------------------------------	----------------------------------

ALTERNATE MISSED APCH FIX

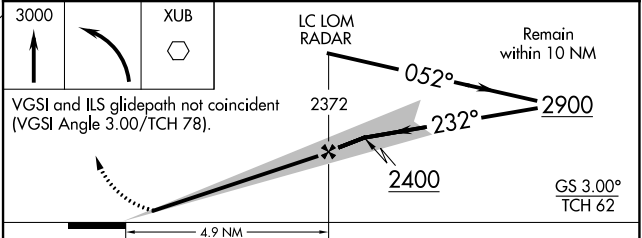
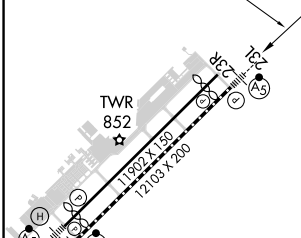
PICKL
376 LC

RADAR REQUIRED



MISSED APCH FIX
YELLOW BUD
 XUB
 112.5

 R-024
 20°
 024°

ELEV 744	D	TDZE 23L 740	TDZE 23R 743
----------	----------	--------------	--------------



TDZ/CL Rwy 5R	TDZ/CL Rwy 23R	TDZ/CL Rwy 23L	TDZ/CL Rwy 5L
REIL Rwy 23R	REIL Rwy 23L	REIL Rwy 5L	REIL Rwy 5R
HIRL Rwy 5L-23R and 5R-23L	HIRL Rwy 23R	HIRL Rwy 23L	HIRL Rwy 5L
FAF to MAP 4.9 NM			
Knots	60	90	120
Min:Sec	4:54	3:16	2:27
	1:58	1:38	

CATEGORY	A	B	C	D
S-ILS 23L	940/24 200 (200-1/2)			
S-LOC 23L	1 220/24	480 (500-1/2)	1 220/50	480 (500-1)
SIDESTEP RWY 23R	1 220-1	477 (500-1)	1 220-1 1/2	477 (500-2)
SIDESTEP RWY 23L	1 220-1	496 (500-1)	1 280-1 1/2	1 400-2
CIRCLING	1 240-1	496 (500-1)	536 (600-1 1/2)	656 (700-2)

EC-2, 22 FEB 2024 to 21 MAR 2024

EC-2, 22 FEB 2024 to 21 MAR 2024

LOC/DME I-FQS 110.55 Chan 42 (Y)	APP CRS 052°	Rwy Idg 11004 TDZE 744 Apt Elev 744
--	------------------------	--

ILS or LOC RWY 5L

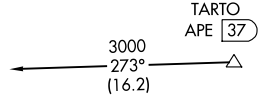
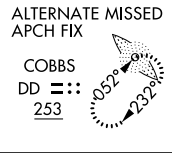
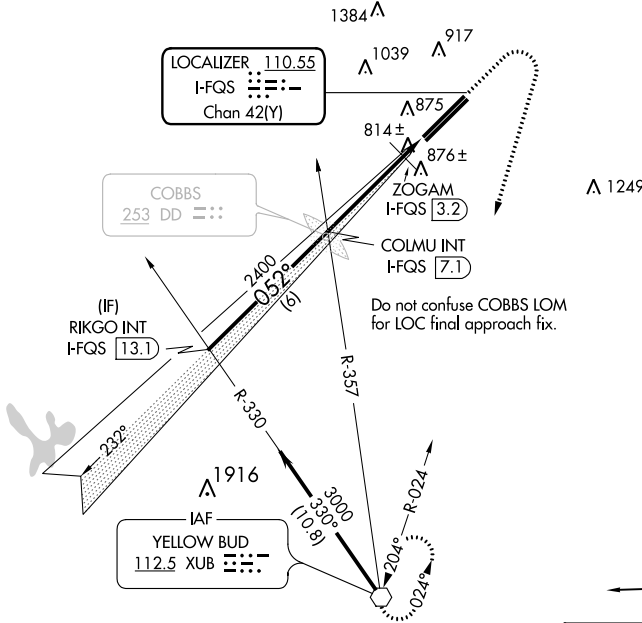
RICKENBACKER INTL (LCK)

⚠ Circling NA northwest of Rwy 5L-23R. When local altimeter setting not received, use John Glenn Columbus Intl altimeter setting and increase DA to 979 feet; increase all MDAs 40 feet and S-LOC 5L Cat C, Circling Cat D ¼ SM; increase ZOGAM fix minimums S-LOC 5L Cats C/D visibility ½ SM and Circling Cat D ¼ SM.

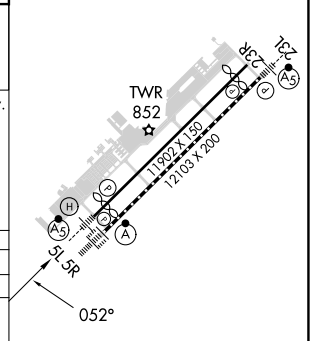
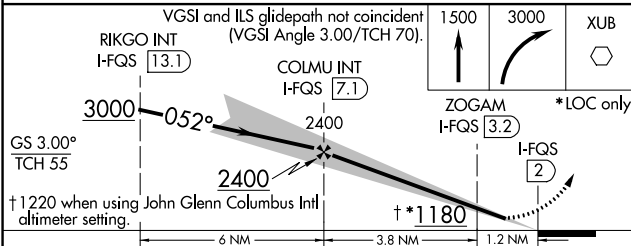


MISSED APPROACH: Climb to 1500 then climbing right turn to 3000 direct XUB VOR and hold.

ATIS 132.75	COLUMBUS APP CON 134.0 279.6	RICK TOWER 120.05 348.4	GND CON 125.275 275.8	CLNC DEL 125.275 275.8
-----------------------	--	-----------------------------------	---------------------------------	----------------------------------



ELEV 744	D	TDZE 744
----------	---	----------



CATEGORY	A	B	C	D
S-ILS 5L	944-½		200 (200-½)	
S-LOC 5L	1180-½	436 (500-½)	1180-¾	436 (500-¾)
CIRCLING	1240-1	496 (500-1)	1280-1½	1400-2
			536 (600-1½)	656 (700-2)
ZOGAM FIX MINIMUMS				
S-LOC 5L	1080-½		336 (400-½)	
CIRCLING	1240-1	496 (500-1)	1280-1½	1400-2
			536 (600-1½)	656 (700-2)

TDZ/CL Rwy 5R					
REIL Rwy 23R					
HIRL Rwy 5L-23R and 5R-23L					
FAF to MAP 5 NM					
Knots	60	90	120	150	180
Min:Sec	5:00	3:20	2:30	2:00	1:40

EC-2, 22 FEB 2024 to 21 MAR 2024

EC-2, 22 FEB 2024 to 21 MAR 2024

LOC/DME I-DDV 110.1 Chan 38	APP CRS 052°	Rwy Idg 12103 TDZE 736 Apt Elev 744
---	------------------------	--

ILS or LOC RWY 5R

RICKENBACKER INTL (LCK)

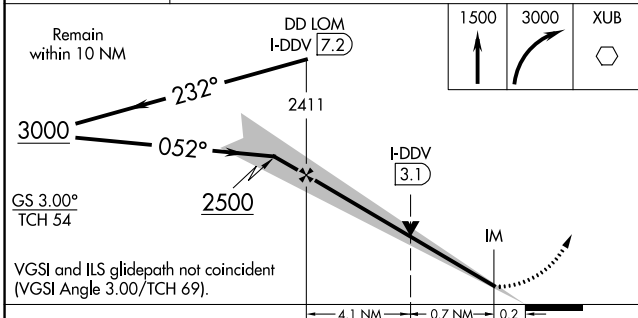
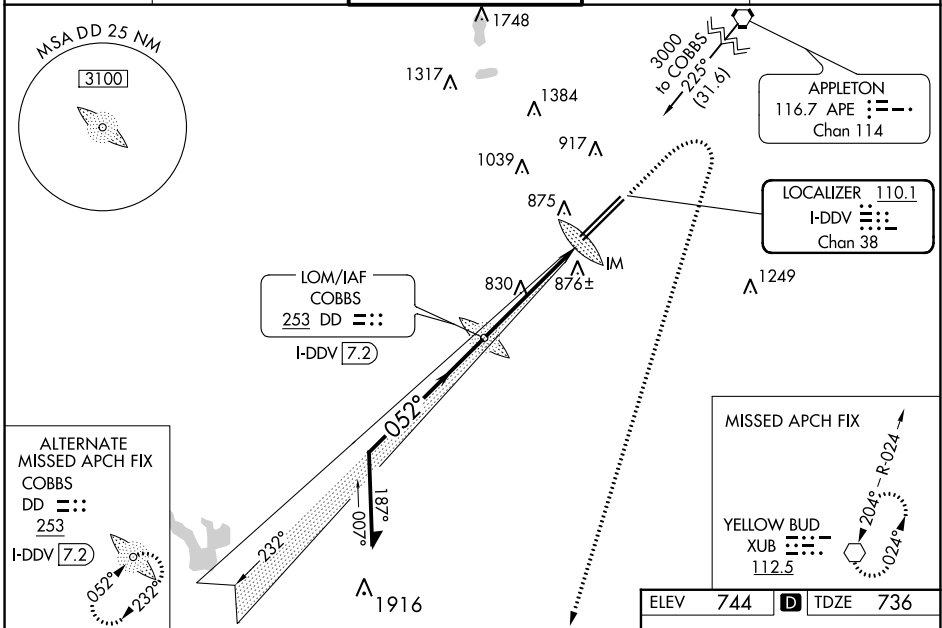
ADF or DME required.

NA
Circling NA northwest of Rwy 5L-23R.

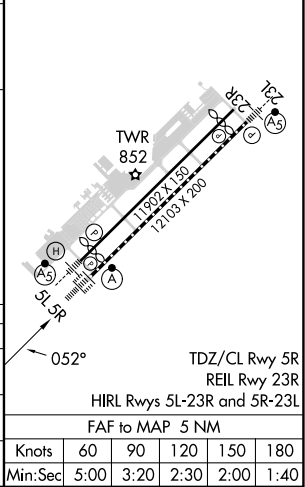
ALSF-2

MISSED APPROACH: Climb to 1500 then climbing right turn to 3000 direct XUB VOR and hold.

ATIS 132.75	COLUMBUS APP CON 134.0 279.6	RICK TOWER 120.05 348.4	GND CON 125.275 275.8	CLNC DEL 125.275 275.8
-----------------------	--	--	---------------------------------	----------------------------------



ELEV 744	D TDZE 736
----------	-------------------



CATEGORY	A	B	C	D
S-ILS 5R	936/18		200 (200-½)	
S-LOC 5R	1080/24	344 (400-½)	1080/30	344 (400-¾)
CIRCLING	1240-1	496 (500-1)	1280-1½ 536 (600-1½)	1400-2 656 (700-2)

Knots	60	90	120	150	180
Min:Sec	5:00	3:20	2:30	2:00	1:40

EC-2, 22 FEB 2024 to 21 MAR 2024

EC-2, 22 FEB 2024 to 21 MAR 2024

WAAS CH 62811 W23A	APP CRS 230°	Rwy Idg 12103 TDZE 740 Apt Elev 740
--	------------------------	--

RNAV (GPS) RWY 23L

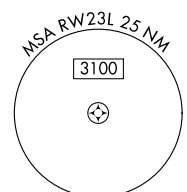
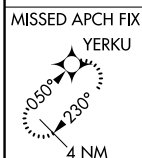
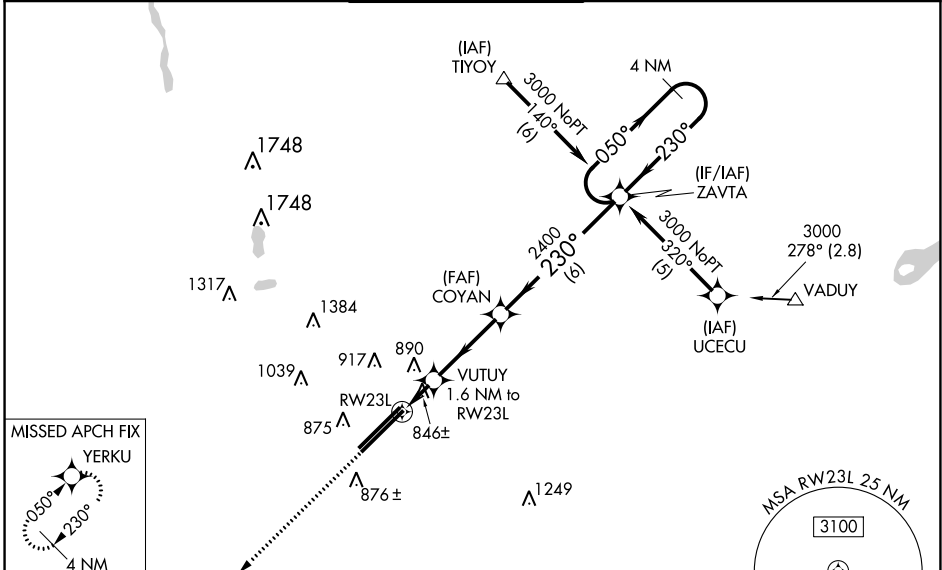
RICKENBACKER INTL (LCK)

⚠ Circling NA NW of Rwy 5L-23R. Baro-VNAV NA when using John Glenn Columbus Intl altimeter setting. For uncompensated Baro-VNAV systems, LNAV/VNAV NA below -16°C (4°F) or above 47°C (116°F). DME/DME RNP-0.3 NA. When local altimeter setting not received, use John Glenn Columbus Intl altimeter setting: increase LPV DA to 975 feet; increase LNAV/VNAV DA to 1157 feet and all visibilities to RVR 4000; increase all MDAs 40 feet and LNAV visibility Cats C/D to RVR 5000 and Circling Cat D to 2½ SM. ** RVR 1800 authorized with use of FD or AP or HUD to DA, NA when using John Glenn Columbus Intl altimeter setting.

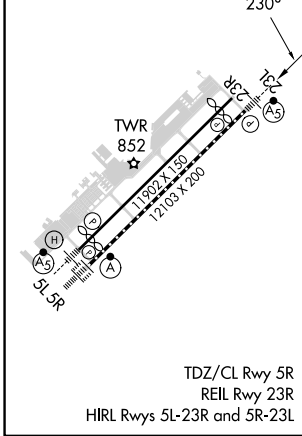
MALSR

MISSED APPROACH:
Climb to 3000 direct YERKU and hold.

ATIS 132.75	COLUMBUS APP CON 134.0 279.6	RICK TOWER 120.05 348.4	GND CON 125.275 275.8	CLNC DEL 125.275 275.8
-----------------------	--	-----------------------------------	---------------------------------	----------------------------------



ELEV 740	D	TDZE 740
----------	----------	----------



3000 YERKU VGSI and RNAV glidepath not coincident (VGSI Angle 3.00/TCH 78). 4 NM Holding Pattern

* LNAV only.

VUTUY 1.6 NM to RWY 23L

COYAN

ZAVTA

GP 3.00° TCH 55

CATEGORY	A	B	C	D
LPV DA **	940/24		200 (200-½)	
LNAV/VNAV DA	1122/35		382 (400-¾)	
LNAV MDA	1180/24	440 (500-½)	1180/40	440 (500-¾)
CIRCLING	1240-1	496 (500-1)	1280-1½ 536 (600-1½)	1400-2 656 (700-2)

EC-2, 22 FEB 2024 to 21 MAR 2024

EC-2, 22 FEB 2024 to 21 MAR 2024

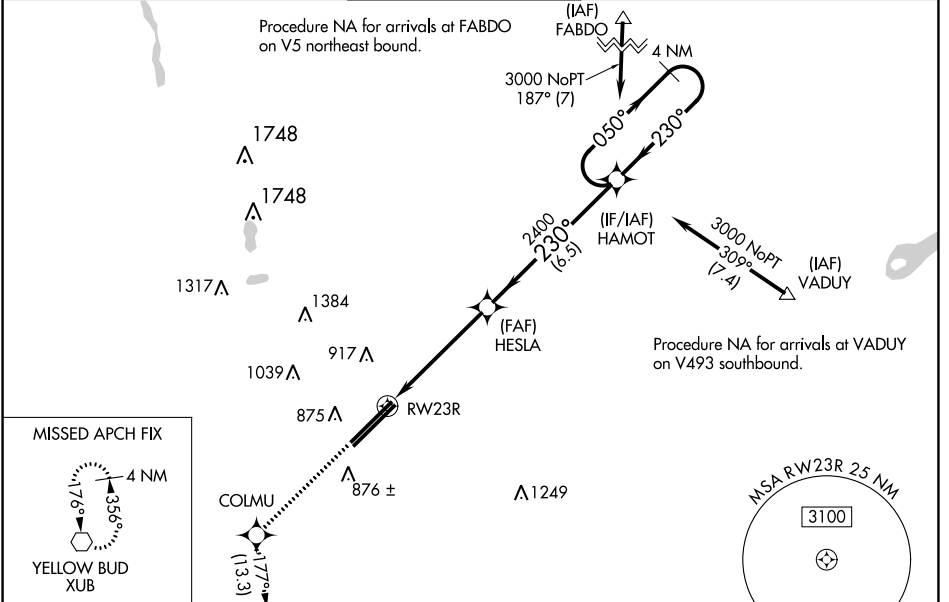
WAAS CH 78421 W23B	APP CRS 230°	Rwy Idg TDZE 743 Apt Elev 744	10913
--	------------------------	---	--------------

RNAV (GPS) RWY 23R

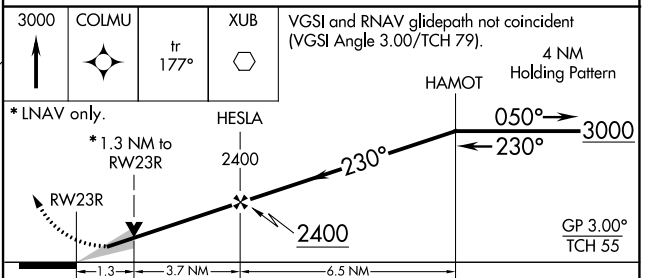
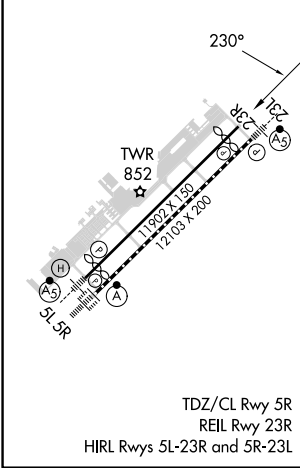
RICKENBACKER INTL (LCK)

RNP APCH.	<p>▲ Baro-VNAV NA when using John Glenn Columbus Intl altimeter setting. For uncompensated Baro-VNAV systems, LNAV/VNAV NA below -1.6°C or above 54°C. Circling NA northwest of Rwy 5L-23R. VDP NA with John Glenn Columbus Intl altimeter setting. When local altimeter setting not received, use John Glenn Columbus Intl altimeter setting: increase LPV DA to 978 feet; increase LNAV/VNAV DA to 1041 feet and all visibilities to 1 SM; increase all MDAs 40 feet and Circling Cat D visibility ¼ SM.</p>	MISSED APPROACH: Climb to 3000 direct COLUMU and on track 177° to XUB VOR and hold.
-----------	---	--

ATIS 132.75	COLUMBUS APP CON 134.0 279.6	RICK TOWER 120.05 348.4	GND CON 125.275 275.8	CLNC DEL 125.275 275.8
-----------------------	--	-----------------------------------	---------------------------------	----------------------------------



ELEV 744	D	TDZE 743
-----------------	----------	-----------------



CATEGORY	A	B	C	D
LPV DA		943-¾	200 (200-¾)	
LNAV/VNAV DA		1006-7/8	263 (300-7/8)	
LNAV MDA	1220-1	477 (500-1)	1220-1¾	477 (500-1¾)
CIRCLING	1240-1	496 (500-1)	1280-1½ 536 (600-1½)	1400-2 656 (700-2)

EC-2, 22 FEB 2024 to 21 MAR 2024

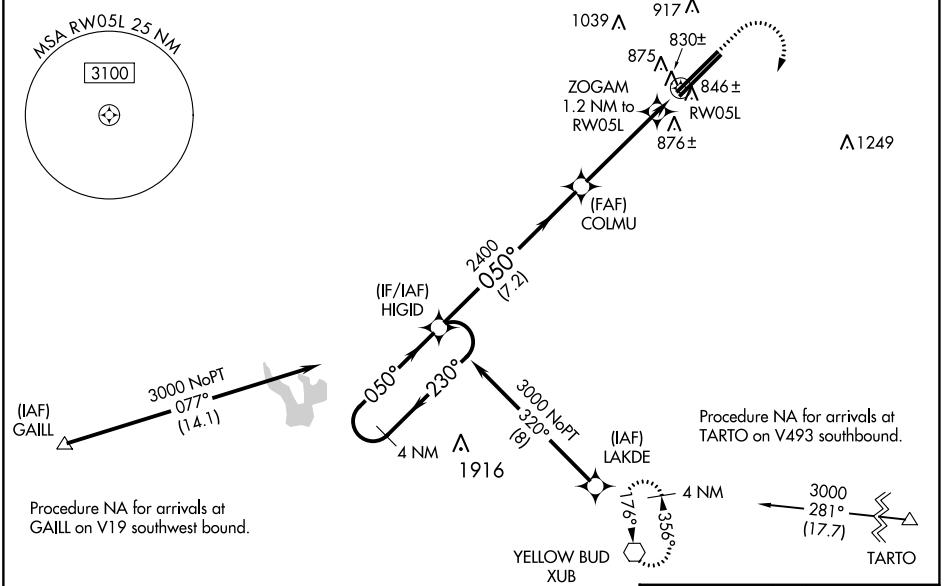
EC-2, 22 FEB 2024 to 21 MAR 2024

WAAS CH 78022 W05B	APP CRS 050°	Rwy Idg 11004 TDZE 744 Apt Elev 744
--	------------------------	--

RNAV (GPS) RWY 5L

RICKENBACKER INTL (LCK)

RNP APCH.		MALSR 	MISSED APPROACH: Climb to 1500 then climbing right turn to 3000 direct XUB VOR and hold.
ATIS 132.75	COLUMBUS APP CON 134.0 279.6	RICK TOWER 120.05 348.4	GND CON 125.275 275.8
		CLNC DEL 125.275 275.8	



ELEV 744		D	TDZE 744	
VGSI and RNAV glidepath not coincident (VGSI Angle 3.00/TCH 70). 4 NM Holding Pattern		1500	3000	XUB
HIGID 3000 \leftarrow 230° \rightarrow 050° \rightarrow GP 3.00° TCH 55		COLMU 2400	ZOGAM 1.2 NM to RW05L	RW05L
7.2 NM 3.8 NM 1.2 NM *1200 *RNAV only.				
CATEGORY	A	B	C	D
LPV DA		944-1/2	200 (200-1/2)	
LNAV/VNAV DA		1007-1/2	263 (300-1/2)	
LNAV MDA	1100-1/2	356 (400-1/2)	1100-5/8	356 (400-5/8)
CIRCLING	1240-1	496 (500-1)	1280-1 1/2 536 (600-1 1/2)	1400-2 656 (600-2)

EC-2, 22 FEB 2024 to 21 MAR 2024

EC-2, 22 FEB 2024 to 21 MAR 2024

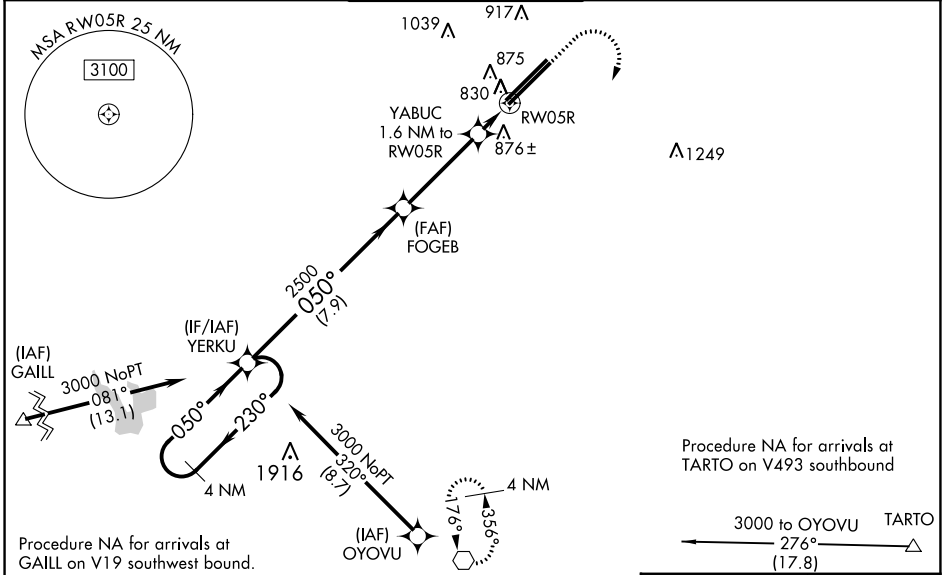
WAAS CH 78410 W05A	APP CRS 050°	Rwy Idg 12103 TDZE 736 Apt Elev 744
--	------------------------	--

RNAV (GPS) RWY 5R

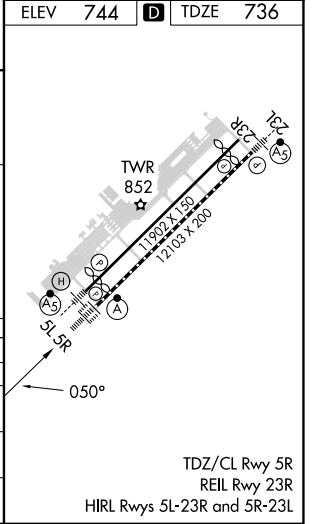
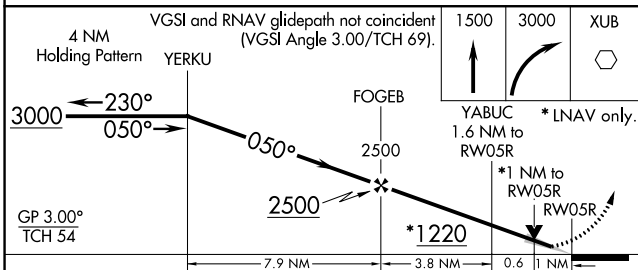
RICKENBACKER INTL (LCK)

RNP APCH.	<p>▲ Baro-VNAV NA when using John Glenn Columbus Intl altimeter setting. For uncompensated Baro-VNAV systems, LNAV/VNAV NA below -16°C or above 54°C. Circling NA northwest of Rwy 5L-23R. VDP NA with John Glenn Columbus Intl altimeter setting. When local altimeter setting not received, use John Glenn Columbus Intl altimeter setting: increase LPV DA to 971 feet; increase LNAV/VNAV DA to 1138 feet and visibility to RVR 4000 all Cats; increase all MDAs 40 feet and LNAV Cats C/D visibility to RVR 4000 and Circling Cat D visibility to 2 ¼ SM. For inop ALS when using John Glenn Columbus Intl altimeter setting, increase LNAV/VNAV visibility to 6000, all Cats.</p>	<p>ALSF-2</p>	<p>MISSED APPROACH: Climb to 1500 then climbing right turn to 3000 direct XUB VOR and hold.</p>
-----------	---	---------------	---

ATIS 132.75	COLUMBUS APP CON 134.0 279.6	RICK TOWER 120.05 348.4	GND CON 125.275 275.8	CLNC DEL 125.275 275.8
-----------------------	--	-----------------------------------	---------------------------------	----------------------------------



ELEV 744	D	TDZE 736
----------	----------	----------



CATEGORY	A	B	C	D
LPV DA		936/18	200 (200-½)	
LNAV/VNAV DA		1103/35	367 (400-¾)	
LNAV MDA	1120/24	384 (400-½)	1120/35	384 (400-¾)
CIRCLING	1240-1	496 (500-1)	1280-1½ 536 (600-1½)	1400-2 656 (700-2)

EC-2, 22 FEB 2024 to 21 MAR 2024

EC-2, 22 FEB 2024 to 21 MAR 2024

INSTRUMENT APPROACH PROCEDURE CHARTS

IFR ALTERNATE AIRPORT MINIMUMS

Pilots must review the IFR Alternate Minimums Notes to determine alternate airport suitability.

△NA designation on the approach chart means that pilots may not use that approach as an alternate due to unmonitored facility, absence of weather reporting service, or lack of adequate navigation coverage. Approaches with the **△**NA designation are not listed in this section. **△** designation on the approach chart indicates that the approach procedure has non-standard minimums (for aircraft other than helicopters) or restrictions (for all users) for its use as an alternate.

Alternate Minima (ref: 14 CFR 91.169)

	Precision Approach	Non-Precision Approach
Standard	600-2	800-2
△ Non-Standard or restrictions	As indicated below	As indicated below
Helicopters	For the selected approach: Ceiling: 200' above published ceiling Visibility: the greater of 1 SM visibility or the published visibility	
US Military (USA/USN/USAF)	See Service Regulations	

Note: For alternate airport flight planning purposes, precision approach operations include: ILS, PAR, and GLS, and Non-Precision approach operations include: NDB, VOR, LOC, TACAN, LDA, SDF, ASR, RNAV (GPS) and RNAV (RNP).

NAME ALTERNATE MINIMUMS

AKRON, OH
AKRON FULTON
INTL (AKR).....**LOC Rwy 25**
NDB Rwy 25
RNAV (GPS) Rwy 25

Category D, 800-2½.

NAME ALTERNATE MINIMUMS

BATAVIA, OH
CLERMONT
COUNTY (I69).....**RNAV (GPS) Rwy 4**
RNAV (GPS) Rwy 22
VOR-B

NA when local weather not available.

ANDERSON, IN
ANDERSON MUNI-DARLINGTON
FLD (AID).....**ILS or LOC Rwy 30¹**
RNAV (GPS) Rwy 12
RNAV (GPS) Rwy 30

NA when local weather not available.
¹NA when control tower closed.

BEDFORD, IN
VIRGIL I. GRISSOM
MUNI (BFR).....**RNAV (GPS) Rwy 13**

NA when local weather not available.

ATHENS/ALBANY, OH
OHIO
UNIVERSITY (UNI).....**RNAV (GPS) Rwy 7**
RNAV (GPS) Rwy 25

Category D, 800-2½.

BELLEFONTAINE, OH
BELLEFONTAINE
RGNL (EDJ).....**VOR Rwy 7**

NA when local weather not available.
Category D, 900-2¾.

AUBURN, IN
DE KALB
COUNTY (GWB).....**RNAV (GPS) Rwy 9**
RNAV (GPS) Rwy 27
VOR-A

Category C, 900-2½; Category D, 900-2¾.

BLOOMINGTON, IN
MONROE
COUNTY (BMG).....**ILS or LOC/DME Rwy 35¹**
RNAV (GPS) Rwy 17²
RNAV (GPS) Rwy 24²
RNAV (GPS) Rwy 35³
VOR Rwy 17³
VOR/DME Rwy 6²³

¹ILS, LOC, Category D, 800-2½.
²NA when local weather not available.
³Category D, 800-2½.

22 FEB 2024 to 21 MAR 2024

22 FEB 2024 to 21 MAR 2024

NAME ALTERNATE MINIMUMS

CAMBRIDGE, OH

CAMBRIDGE MUNI (CDI).....RNAV (GPS) Rwy 4
RNAV (GPS) Rwy 22

NA when local weather not available.
Category C, 1100-3.

CHILLICOTHE, OH

ROSS COUNTY (RZT).....RNAV (GPS) Rwy 23
NA when local weather not available.
Category C, 800-2¼; Category D, 900-2¼.

CINCINNATI, OH

CINCINNATI MUNI/LUNKEN
FLD (LUK).....ILS or LOC Rwy 21L¹²
RNAV (GPS) Rwy 3R³
RNAV (GPS) Rwy 21L⁴
RNAV (GPS) Rwy 25⁵

NA when local weather not available.
¹NA when control tower closed.
²LOC, Category B, 900-2; Category C, 900-2½;
Category D, 1000-3.
³Categories A, B, 900-2; Category C, 900-2½;
Category D, 900-2¼.
⁴Categories A, B, 900-2¼; Category C, 900-2½;
Category D, 900-2¼.
⁵Categories A, B, C, 900-2½; Category D, 900-2¼.

CIRCLEVILLE, OH

PICKAWAY COUNTY
MEML (CYO).....RNAV (GPS) Rwy 1
RNAV (GPS) Rwy 19
VOR Rwy 19

NA when local weather not available.

CLEVELAND, OH

BURKE
LAKEFRONT (BKL).....ILS or LOC Rwy 24R¹
RNAV (GPS) Rwy 24R

NA when local weather not available.
¹NA when control tower closed.

CUYAHOGA

COUNTY (CGF).....ILS or LOC Rwy 24¹
RNAV (GPS) Rwy 6²
RNAV (GPS) Rwy 24³

¹LOC, Category D, 800-2½.
²Category D, 800-2¼.
³Category D, 800-2½.

COLUMBUS, IN

COLUMBUS
MUNI (BAK).....RNAV (GPS) Rwy 5
RNAV (GPS) Rwy 14¹
RNAV (GPS) Rwy 23
RNAV (GPS) Rwy 32

NA when local weather not available.
¹Category D, 800-2½.

NAME ALTERNATE MINIMUMS

COLUMBUS, OH

BOLTON FLD (TZR).....ILS or LOC Rwy 4¹²
NDB Rwy 4¹
RNAV (GPS) Rwy 22²

¹NA when control tower closed.
²NA when local weather not available.

JOHN GLENN COLUMBUS

INTL (CMH).....ILS or LOC Rwy 10L¹
ILS or LOC Rwy 10R¹
ILS or LOC Rwy 28L¹
ILS or LOC Rwy 28R¹
RNAV (GPS) Y Rwy 10L²
RNAV (GPS) Y Rwy 10R²
RNAV (GPS) Y Rwy 28L²
RNAV (GPS) Y Rwy 28R²

¹LOC, Category D, 800-2¼.
²Category D, 800-2¼.

OHIO STATE

UNIVERSITY (OSU).....ILS or LOC Rwy 9R¹²
NDB Rwy 9R³
RNAV (GPS) Rwy 9R³
RNAV (GPS) Rwy 27L³

NA when local weather not available.
¹LOC, Category D, 800-2¼.
²NA when control tower closed.
³Category D, 800-2¼.

RICKENBACKER

INTL (LCK).....ILS or LOC Rwy 5L
ILS or LOC Rwy 23L
RNAV (GPS) Rwy 5L
RNAV (GPS) Rwy 5R
RNAV (GPS) Rwy 23L
RNAV (GPS) Rwy 23R

NA when local weather not available.

CRAWFORDSVILLE, IN

CRAWFORDSVILLE
RGNL (CFJ).....RNAV (GPS) Rwy 4
RNAV (GPS) Rwy 22

NA when local weather not available.
Category D, 800-2¼.

DAYTON, OH

DAYTON/WRIGHT
BROTHERS (MGY).....RNAV (GPS) Rwy 2
RNAV (GPS) Rwy 20

NA when local weather not available.
Category D, 800-2¼.

GREEN COUNTY/LEWIS A JACKSON

RGNL (GDK).....RNAV (GPS) Rwy 7
RNAV (GPS) Rwy 25

NA when local weather not available.

JAMES M COX DAYTON

INTL (DAY).....ILS or LOC Rwy 6L
ILS, Category D, 700-2.

22 FEB 2024 to 21 MAR 2024

22 FEB 2024 to 21 MAR 2024

NAME ALTERNATE MINIMUMS

DEFIANCE, OH

DEFIANCE
MEML (DFI).....RNAV (GPS) Rwy 12
Category D, 800-2¼.

ELKHART, IN

ELKHART
MUNI (EKM).....ILS or LOC Rwy 27¹
RNAV (GPS) Rwy 9²
RNAV (GPS) Rwy 18²³
RNAV (GPS) Rwy 27²³
RNAV (GPS) Rwy 36²
VOR Rwy 9²

¹ILS, NA when control tower closed. LOC, NA.
²NA when local weather not available.
³Category D, 900-2½.

EVANSVILLE, IN

EVANSVILLE
RGNL (EVV).....ILS or LOC Rwy 4¹
ILS or LOC Rwy 22²

NA when control tower closed.
¹ILS, Categories A, B, 800-2; Categories C, D, 800-2½; LOC, Categories C, D, 800-2½.
²NA when local weather not available.

FINDLAY, OH

FINDLAY (FDY).....RNAV (GPS) Rwy 7
RNAV (GPS) Rwy 18
RNAV (GPS) Rwy 25
RNAV (GPS) Rwy 36
VOR Rwy 7

NA when local weather not available.
Category D, 800-2¼.

FORT WAYNE, IN

FORT WAYNE
INTL (FWA).....ILS or LOC Rwy 5¹
ILS or LOC Rwy 32²
RADAR-1³
RNAV (GPS) Rwy 5³
RNAV (GPS) Rwy 14⁴
RNAV (GPS) Rwy 23³
RNAV (GPS) Rwy 32⁴
VOR or TACAN Rwy 5³
VOR or TACAN Rwy 14³
VOR or TACAN Rwy 23³

¹ILS, Category C, 700-2; Category D, 800-2¼; Category E, 800-2½; LOC, Category D, 800-2¼; Category E, 800-2½.
²LOC, Category D, 800-2¼, Category E, 800-2½.
³Category D, 800-2¼, Category E, 800-2½.
⁴Category D, 800-2¼.

SMITH FLD (SMD).....RNAV (GPS) Rwy 5
Categories A, B, 1100-2; Category C, 1200-3.

FOSTORIA, OH

FOSTORIA METRO (FZI).....RNAV (GPS) Rwy 9
NA when local weather not available.

NAME ALTERNATE MINIMUMS

FRANKFORT, IN

FRANKFORT CLINTON
COUNTY RGNL (FKR).....RNAV (GPS) Rwy 27
NA when local weather not available.

FRENCH LICK, IN

FRENCH LICK
MUNI (FRH).....RNAV (GPS) Rwy 8
RNAV (GPS) Rwy 26
Category D, 800-2¼.

GARY, IN

GARY/CHICAGO
INTL (GYG).....COPTER ILS or LOC Rwy 30¹
ILS or LOC Rwy 30¹²³
RNAV (GPS) Rwy 2²⁴
RNAV (GPS) Rwy 20⁴
RNAV (GPS) Y Rwy 12²⁴
RNAV (GPS) Y Rwy 30²⁴

¹NA when control tower closed.
²NA when local weather not available.
³LOC, Category C, 900-2¼; Category D, 900-2¼.
⁴Category C, 900-2¼; Category D, 900-2¼.

GOSHEN, IN

GOSHEN MUNI (GSH).....RNAV (GPS) Rwy 9
RNAV (GPS) Rwy 27
VOR Rwy 9
NA when local weather not available.
Category D, 800-2¼.

HAMILTON, OH

BUTLER COUNTY RGNL/HOGAN
FLD (HAO).....ILS or LOC Rwy 29¹
RNAV (GPS) Rwy 11²
RNAV (GPS) Rwy 29²
NA when local weather not available.
¹LOC, Category D, 1200-3.
²Category D, 1200-3.

HUNTINGBURG, IN

HUNTINGBURG (HNB).....RNAV (GPS) Rwy 9
RNAV (GPS) Rwy 27
NA when local weather not available.
Category D, 900-2¼.

HUNTINGTON, IN

HUNTINGTON
MUNI (HHG).....RNAV (GPS) Rwy 10¹
RNAV (GPS) Rwy 28¹
VOR-A
Category D, 800-2¼.
¹NA when local weather not available.

INDIANAPOLIS, IN

EAGLE CREEK
AIRPARK (EYE).....RNAV (GPS) Rwy 21
VOR-A
NA when local weather not available.

22 FEB 2024 to 21 MAR 2024

22 FEB 2024 to 21 MAR 2024

NAME ALTERNATE MINIMUMS

INDIANAPOLIS, IN (CON'T)

INDIANAPOLIS
EXEC (TYQ).....RNAV (GPS) Rwy 18
RNAV (GPS) Rwy 36
VOR Rwy 18

NA when local weather not available.

INDIANAPOLIS

INTL (IND).....ILS or LOC Rwy 5L¹
ILS or LOC Rwy 5R¹
ILS or LOC Rwy 14²
ILS or LOC Rwy 23L²
ILS or LOC Rwy 23R¹
ILS or LOC Rwy 32¹
RNAV (GPS) Y Rwy 5L³
RNAV (GPS) Y Rwy 5R³
RNAV (GPS) Y Rwy 14³
RNAV (GPS) Y Rwy 23L³
RNAV (GPS) Y Rwy 23R³
RNAV (GPS) Y Rwy 32³

¹ILS, Categories A, B, C, 700-2;
Category D, 800-2½; LOC, Category D, 800-2½.

²LOC, Category D, 800-2½.

³Category D, 800-2½.

INDIANAPOLIS

RGNL (MQJ).....RNAV (GPS) Rwy 16
RNAV (GPS) Rwy 25¹

Category D, 800-2½.

¹NA when local weather not available.

INDY SOUTH

GREENWOOD (HFY).....RNAV (GPS) Rwy 1
Category D, 1100-3.

JACKSON, OH

JAMES A RHODES (JRO).....RNAV (GPS) Rwy 1
RNAV (GPS) Rwy 19

NA when local weather not available.

Categories C, D, 1000-3.

JEFFERSONVILLE, IN

CLARK RGNL (JVY).....RNAV (GPS) Rwy 18
RNAV (GPS) Rwy 36

NA when local weather not available.

KENDALLVILLE, IN

KENDALLVILLE
MUNI (C62).....RNAV (GPS) Rwy 10
RNAV (GPS) Rwy 28

NA when local weather not available.

KNOX, IN

STARKE COUNTY (OXI).....RNAV (GPS) Rwy 18

NA when local weather not available.

Category D, 800-2½.

NAME ALTERNATE MINIMUMS

KOKOMO, IN

KOKOMO MUNI (OKK).....RNAV (GPS) Rwy 5
RNAV (GPS) Rwy 14¹
RNAV (GPS) Rwy 23
RNAV (GPS) Rwy 32¹

NA when local weather not available.

¹Category D, 900-2½.

LA PORTE, IN

LA PORTE
MUNI (PPO).....RNAV (GPS) Rwy 2
RNAV (GPS) Rwy 20

NA when local weather not available.

Category C, 800-2¼, Category D, 800-2½.

LAFAYETTE, IN

PURDUE
UNIVERSITY (LAF).....ILS or LOC Rwy 10¹²
RNAV (GPS) Rwy 10³⁴
RNAV (GPS) Rwy 28³⁴
VOR-A³⁴

¹LOC, Category D, 900-2¾.

²NA when control tower closed.

³NA when local weather not available.

⁴Category D, 900-2¾.

LANCASTER, OH

FAIRFIELD
COUNTY (LHQ).....RNAV (GPS) Rwy 10¹
RNAV (GPS) Rwy 28

NA when local weather not available.

¹Category C, 900-2½.

LIMA, OH

LIMA ALLEN
COUNTY (AOH).....RNAV (GPS) Rwy 10
RNAV (GPS) Rwy 28¹

NA when local weather not available.

¹Category D, 900-2¾.

LONDON, OH

MADISON COUNTY (UYF).....RNAV (GPS) Rwy 9
RNAV (GPS) Rwy 27

NA when local weather not available.

Category D, 800-2½.

LORAIN/ELYRIA, OH

LORAIN COUNTY
RGNL (LPR).....ILS or LOC Rwy 7¹
VOR-A

NA when local weather not available.

¹ILS, Categories C, D, 700-2.

MADISON, IN

MADISON MUNI (IMS).....RNAV (GPS) Rwy 21
RNAV (GPS) Y Rwy 3

NA when local weather not available.

22 FEB 2024 to 21 MAR 2024

22 FEB 2024 to 21 MAR 2024

NAME ALTERNATE MINIMUMS

MANSFIELD, OH

MANSFIELD LAHM
RGNL (MFD).....ILS or LOC Rwy 32¹³
NDB Rwy 32⁴
RNAV (GPS) Rwy 5⁴
RNAV (GPS) Rwy 14²
RNAV (GPS) Rwy 23⁴
RNAV (GPS) Rwy 32²
VOR Rwy 14⁴
VOR Rwy 32⁴

¹NA when control tower closed.
²NA when local weather not available.
³LOC, Category D, 800-2¼.
⁴Category D, 800-2¼.

MARION, OH

MARION MUNI (MNN).....RNAV (GPS) Rwy 7
RNAV (GPS) Rwy 13
RNAV (GPS) Rwy 25
VOR-A

NA when local weather not available.
Category D, 900-2¾.

MARYSVILLE, OH

UNION COUNTY (MRT).....RNAV (GPS) Rwy 9
RNAV (GPS) Rwy 27

NA when local weather not available.

MICHIGAN CITY, IN

MICHIGAN CITY MUNI-PHILLIPS
FLD (MGC).....RNAV (GPS) Rwy 20
Category C, 900-2¾.

MIDDLETOWN, OH

MIDDLETOWN RGNL/HOOK
FLD (MWO).....RNAV (GPS) Rwy 5
RNAV (GPS) Rwy 23

NA when local weather not available.
Category C, 1100-3; Category D, 1200-3.

MILLERSBURG, OH

HOLMES COUNTY (10G).....RNAV (GPS) Rwy 9
RNAV (GPS) Rwy 27

NA when local weather not available.

MOUNT VERNON, OH

KNOX
COUNTY (413).....RNAV (GPS) Rwy 10
NA when local weather not available.

MONTICELLO, IN

WHITE
COUNTY (MCX).....RNAV (GPS) Rwy 18
RNAV (GPS) Rwy 36

NA when local weather not available.
Category C, 900-2¾; Category D, 900-2¾.

NAME ALTERNATE MINIMUMS

MUNCIE, IN

DELAWARE
COUNTY RGNL (MIE).....ILS or LOC Rwy 31¹
RNAV (GPS) Rwy 3
RNAV (GPS) Rwy 14
RNAV (GPS) Rwy 21
RNAV (GPS) Rwy 32
VOR Rwy 14
VOR Rwy 21

NA when local weather not available.
¹NA when control tower closed.

NEW PHILADELPHIA, OH

HARRY CLEVER
FLD (PHD).....VOR-A
Categories A, B, 900-2; Category C, 900-2¾.

NEWARK, OH

NEWARK-HEATH (VTA).....RNAV (GPS) Rwy 9¹
RNAV (GPS) Rwy 27²
VOR-A³⁴

¹Category C, 900-2¾; Category D, 900-2¾.
²Categories A, B, 900-2; Category C, 900-2¾;
Category D, 900-2¾.
³Categories A, B, 1100-2; Categories C, D, 1100-3.
⁴NA when local weather not available.

PLYMOUTH, IN

PLYMOUTH MUNI (C65).....RNAV (GPS) Rwy 10
NA when local weather not available.

PORT CLINTON, OH

ERIE-OTTAWA
INTL (PCW).....RNAV (GPS) Rwy 9
RNAV (GPS) Rwy 27

NA when local weather not available.
Category D, 1000-3.

PORTLAND, IN

PORTLAND MUNI (PLD).....RNAV (GPS) Rwy 9
RNAV (GPS) Rwy 27¹

Category D, 800-2¼.
¹NA when local weather not available.

RAVENNA, OH

PORTAGE
COUNTY (POV).....RNAV (GPS) Rwy 9
RNAV (GPS) Rwy 27
VOR-A

NA when local weather not available.

RENSELAER, IN

JASPER
COUNTY (RZL).....RNAV (GPS) Rwy 18
RNAV (GPS) Rwy 36

NA when local weather not available.
Category C, 800-2¼.

22 FEB 2024 to 21 MAR 2024

22 FEB 2024 to 21 MAR 2024

NAME ALTERNATE MINIMUMS

ROCHESTER, IN

FULTON COUNTY (RCR).....RNAV (GPS) Rwy 11
RNAV (GPS) Rwy 29

NA when local weather not available.
Category D, 900-2¼.

SHELBYVILLE, IN

SHELBYVILLE MUNI (GEZ).....RNAV (GPS) Rwy 1¹
RNAV (GPS) Rwy 19¹
VOR Rwy 19

Category D, 800-2¼.
¹NA when local weather not available.

SOUTH BEND, IN

SOUTH BEND INTL (SBN).....ILS or LOC Rwy 9R¹²
ILS or LOC Rwy 27L¹²
RNAV (GPS) Rwy 9L³
RNAV (GPS) Rwy 9R³
RNAV (GPS) Rwy 18³⁴
RNAV (GPS) Rwy 27L³
RNAV (GPS) Rwy 27R³
RNAV (GPS) Rwy 36³
VOR Rwy 18³

¹NA when control tower closed.
²LOC, Category D, 800-2¼.
³Category D, 800-2¼.
⁴NA when local weather not available.

SPRINGFIELD, OH

SPRINGFIELD/BECKLEY MUNI (SGH).....RNAV (GPS) Rwy 6
RNAV (GPS) Rwy 15
RNAV (GPS) Rwy 24
RNAV (GPS) Rwy 33

NA when local weather not available.

STEUBENVILLE, OH

GEARY A BATES/JEFFERSON COUNTY AIRPARK (2G2).....RNAV (GPS) Rwy 14
RNAV (GPS) Rwy 32

Category C, 800-2¼.

TERRE HAUTE, IN

TERRE HAUTE RGNL (HUF).....ILS or LOC Rwy 5¹
RADAR-1²³
RNAV (GPS) Rwy 5⁴
RNAV (GPS) Rwy 14⁴
RNAV (GPS) Rwy 23⁴
RNAV (GPS) Rwy 32⁴
VOR Rwy 5⁴

¹LOC, NA when local weather not available.
²Category E, 800-2¼.
³NA when control tower closed.
⁴NA when local weather not available.

NAME ALTERNATE MINIMUMS

TOLEDO, OH

TOLEDO EXEC (TDZ).....RNAV (GPS) Rwy 4
RNAV (GPS) Rwy 32

NA when local weather not available.
Category D, 800-2¼.

EUGENE F KRANZ TOLEDO

EXPRESS (TOL).....ILS Z or LOC Z Rwy 7¹
ILS Z or LOC Z Rwy 25²³
RADAR-1⁴
RNAV (GPS) Rwy 7⁴
RNAV (GPS) Rwy 16⁵
RNAV (GPS) Rwy 25⁴
RNAV (GPS) Rwy 34⁵

¹ILS, NA when local weather not available; LOC, NA.
²ILS, LOC, NA when local weather not available
³LOC, Category D, 800-2¼; Category E, 800-2½.
⁴Category D, 800-2¼, Category E, 800-2½.
⁵Category D, 800-2¼.

URBANA, OH

GRIMES FLD (I74).....RNAV (GPS) Rwy 2
RNAV (GPS) Rwy 20
VOR-A

NA when local weather not available.

VALPARAISO, IN

PORTER COUNTY RGNL (VPZ).....ILS or LOC Rwy 27¹
RNAV (GPS) Rwy 9²
RNAV (GPS) Rwy 18
RNAV (GPS) Rwy 27²

NA when local weather not available.
¹LOC, Category D, 900-2¾.
²Category D, 900-2¾.

VAN WERT, OH

VAN WERT COUNTY (VNW).....RNAV (GPS) Rwy 9
RNAV (GPS) Rwy 27

NA when local weather not available.
Category D, 900-2¼.

WARSAW, IN

WARSAW MUNI (ASW).....RNAV (GPS) Rwy 9
RNAV (GPS) Rwy 27

NA when local weather not available.

WASHINGTON, IN

DAVIESS COUNTY (DCY).....RNAV (GPS) Rwy 18
NA when local weather not available.
Category D, 900-2¾.

WASHINGTON COURT HOUSE, OH

FAYETTE COUNTY (I23).....NDB Rwy 23
NA when local weather not available.
Category D, 800-2¼.

22 FEB 2024 to 21 MAR 2024

22 FEB 2024 to 21 MAR 2024

24025

NAME ALTERNATE MINIMUMS

NAME ALTERNATE MINIMUMS

WILLOUGHBY, OH

LAKE COUNTY

EXEC (LNN).....RNAV (GPS) Rwy 5¹
RNAV (GPS) Rwy 10²
RNAV (GPS) Rwy 23³
RNAV (GPS) Rwy 28³

NA when local weather not available.

¹Categories A, B, 900-2; Category C, 900-2¾.

²Categories A, B, 1000-2; Category C, 1000-2¾.

³Category C, 900-2¾.

WILMINGTON, OH

WILMINGTON

AIR PARK (ILN).....ILS or LOC Rwy 4L¹²
ILS or LOC Rwy 4R¹²
ILS or LOC Rwy 22L¹²
ILS or LOC Rwy 22R²³
RNAV (GPS) Rwy 4L⁴
RNAV (GPS) Rwy 22R⁴

NA when local weather not available.

¹ILS, NA when control tower closed.

²LOC, Category C, 800-2¼; Category D, 800-2½.

³NA when control tower closed.

⁴Category C, 800-2¼; Category D, 800-2½.

WOOSTER, OH

WAYNE COUNTY (BJJ).....RNAV (GPS) Rwy 10
RNAV (GPS) Rwy 28
VOR Rwy 10
VOR Rwy 28

NA when local weather not available.

Category D, 800-2¼.

YOUNGSTOWN/WARREN, OH

YOUNGSTOWN/WARREN

RGNL (YNG).....RADAR-1

NA when Youngstown approach control closed.

ZANESVILLE, OH

ZANESVILLE

MUNI (ZZV).....RNAV (GPS) Rwy 4¹
RNAV (GPS) Rwy 22¹
VOR Rwy 4¹
VOR Rwy 22²

NA when local weather not available.

¹Category D, 800-2¼.

²Categories A, B, 900-2; Category C, 900-2½;

Category D, 900-2¾.

22 FEB 2024 to 21 MAR 2024

22 FEB 2024 to 21 MAR 2024

24025

M7

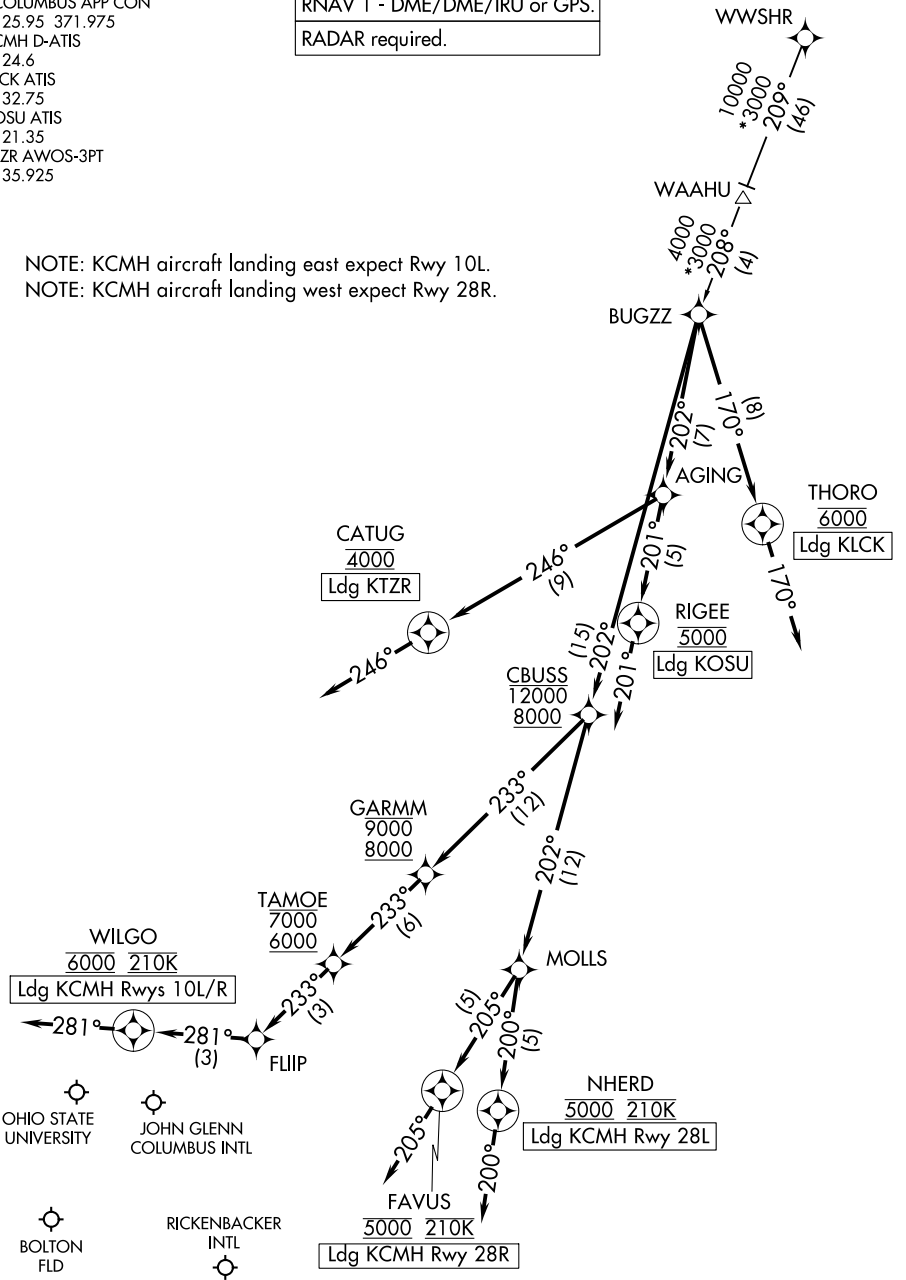
CBUSS TWO ARRIVAL (RNAV)

COLUMBUS, OHIO

COLUMBUS APP CON
 125.95 371.975
 CMH D-ATIS
 124.6
 LCK ATIS
 132.75
 OSU ATIS
 121.35
 TZR AWOS-3PT
 135.925

RNAV 1 - DME/DME/IRU or GPS.
RADAR required.

NOTE: KCMH aircraft landing east expect Rwy 10L.
 NOTE: KCMH aircraft landing west expect Rwy 28R.



EC-2, 22 FEB 2024 to 21 MAR 2024

EC-2, 22 FEB 2024 to 21 MAR 2024

(NARRATIVE ON FOLLOWING PAGE)

NOTE: Chart not to scale.

CBUSS TWO ARRIVAL (RNAV)

COLUMBUS, OHIO

CBUSS TWO ARRIVAL(RNAV)

COLUMBUS, OHIO

ARRIVAL ROUTE DESCRIPTION

WWSHR TRANSITION (WWSHR.CBUSS2)

KCMH: From BUGZZ on track 202° to cross CBUSS between 8000 and 12000.

LANDING KCMH RUNWAYS 10L/R: From CBUSS on track 233° to cross GARMM between 8000 and 9000, then on track 233° to cross TAMOE between 6000 and 7000, then on track 233° to FLIIP, then on track 281° to cross WILGO at 6000 and at 210K, then on track 281°. Expect RADAR vectors to final approach course.

LANDING KCMH RUNWAY 28L: From CBUSS on track 202° to MOLLS, then on track 200° to cross NHERD at 5000 and at 210K, then on track 200°. Expect RADAR vectors to ILS or LOC Rwy 28L approach.

LANDING KCMH RUNWAY 28R: From CBUSS on track 202° to MOLLS, then on track 205° to cross FAVUS at 5000 and at 210K, then on track 205°. Expect RADAR vectors to ILS or LOC Rwy 28R approach.

LANDING KLCK: From BUGZZ on track 170° to cross THORO at 6000, then on track 170°. Expect RADAR vectors to final approach course.

LANDING KOSU: From BUGZZ on track 202° to AGING, then on track 201° to cross RIGEE at 5000, then on track 201°. Expect RADAR vectors to final approach course.

LANDING KTZR: From BUGZZ on track 202° to AGING, then on track 246° to cross CATUG at 4000, then on track 246°. Expect RADAR vectors to final approach course.

EC-2, 22 FEB 2024 to 21 MAR 2024

EC-2, 22 FEB 2024 to 21 MAR 2024

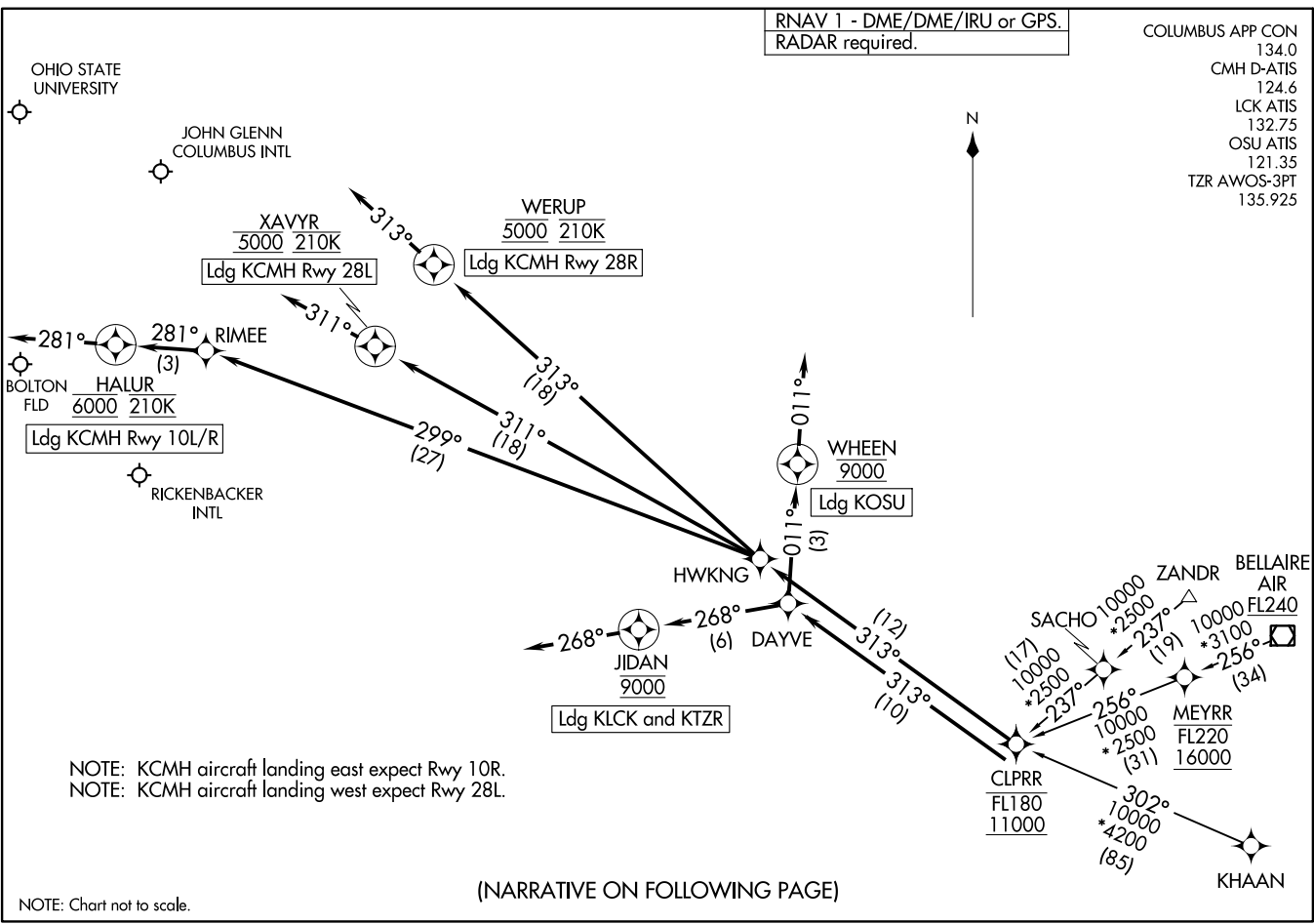
RNAV 1 - DME/DME/IRU or GPS.
RADAR required.

COLUMBUS APP CON 134.0
CMH D-ATIS 124.6
LCK ATIS 132.75
OSU ATIS 121.35
TZR AWOS-3PT 135.925

(CLPRR, CLPRR2) 231.66
CLPRR TWO ARRIVAL (RNAV)

AL-94 (FAA)

COLUMBUS, OHIO



CLPRR TWO ARRIVAL (RNAV)
(CLPRR, CLPRR2) 231.66
23FEB23

COLUMBUS, OHIO

ARRIVAL ROUTE DESCRIPTION

BELLAIRE TRANSITION (AIR.CLPRR2)

KHAAN TRANSITION (KHAAN.CLPRR2)

ZANDR TRANSITION (ZANDR.CLPRR2)

KCMH: From CLPRR on track 313° to HWKNG.

LANDING KCMH RUNWAY 10L/R: From HWKNG on track 299° to RIMEE, then on track 281° to cross HALUR at 6000 and at 210K, then on track 281°. Expect RADAR vectors to final approach course.

LANDING KCMH RUNWAY 28L: From HWKNG on track 311° to cross XAVYR at 5000 and at 210K, then on track 311°. Expect RADAR vectors to ILS or LOC Rwy 28L approach.

LANDING KCMH RUNWAY 28R: From HWKNG on track 313° to cross WERUP at 5000 and at 210K, then on track 313°. Expect RADAR vectors ILS or LOC Rwy 28R approach.

LANDING KTZR/KLCK: From CLPRR on track 313° to DAYVE, then on track 268° to cross JIDAN at 9000, then on track 268°. Expect RADAR vectors to final approach course.

LANDING KOSU: From CLPRR on track 313° to DAYVE, then on track 011° to cross WHEEN at 9000, then on track 011°. Expect RADAR vectors to final approach course.

EC-2, 22 FEB 2024 to 21 MAR 2024

EC-2, 22 FEB 2024 to 21 MAR 2024

DUBLIN ONE ARRIVAL (RNAV)
(MELZZ:DUBLN1) 12AUG21

(MELZZ:DUBLN1) 23166
DUBLIN ONE ARRIVAL (RNAV)

AL-94 (FAA)

COLUMBUS, OHIO

RNAV 1 - DME/DME/IRU or GPS.
RADAR required.



COLUMBUS APP CON
125.95 371.975
CMH D-ATIS
124.6
LCK ATIS
132.75
OSU ATIS
121.35
TZR AWOS-3PT
135.925

BRYEN
FL230

10000
*3000
119°
(52)

FLAG CITY
FBC

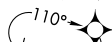
9000
*2500
153°
(29)

CHDRS

ESSIE
10000

4000
*2500
161°
(16)

MERVN



IKALE

4000
*2900
120°
(12)

VBILT
5000

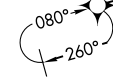
TEEZE

6000 210K

Ldg KCMH Rwy
28L and Rwy 28R

10000
*2900
080°
(77)

JADUB
FL240



15 NM

CYRAH

4000
*2500
133°
(13)

MELZZ
(5)

111°
(5)

130°

TRLGY
9000
8000

POLRS
7000
6000

MAJGE
7000

Ldg KLCK and KTZR

190°
(3)

188°
(3)

WESDA
5000

186°
(3)

131°
(6)

133°
(2)

HELDI
5000 210K

Ldg KCMH Rwy 10R

189°
(5)

189°
(4)

ZELON
5000

TACES

101°
(3)

BOLTON
FLD

MADZY
5000 210K

JOHN GLENN
COLUMBUS INTL

101°
(3)

Ldg KCMH Rwy 10L

RICKENBACKER
INTL

NOTE: KCMH aircraft landing east expect Rwy 10L.
NOTE: KCMH aircraft landing west expect Rwy 28R.

NOTE: Chart not to scale.

(NARRATIVE ON FOLLOWING PAGE)

COLUMBUS, OHIO

ARRIVAL ROUTE DESCRIPTION

BRYEN TRANSITION (BRYEN.DUBLN1):

ESSIE TRANSITION (ESSIE.DUBLN1):

FLAG CITY TRANSITION (FBC.DUBLN1):

JADUB TRANSITION (JADUB.DUBLN1):

KCMH: From MELZZ on track 148° to DUBLN.

LANDING KCMH RUNWAY 10L: From DUBLN on track 186° to cross ZELON at 5000, then on track 189° to cross MADZY at 5000 and at 210K, then on track 189°. Expect RADAR vectors to ILS or LOC Rwy 10L approach.

LANDING KCMH RUNWAY 10R: From DUBLN on track 188° to cross WESDA at 5000, then on track 189° to cross HELDI at 5000 and at 210K, then on track 189°. Expect RADAR vectors to ILS or LOC Rwy 10R approach.

LANDING KCMH RUNWAY 28L/R: From DUBLN on track 130° to cross TRLGY between 8000 and 9000, then on track 131° to cross POLRS between 6000 and 7000, then on track 133° to TACES, then on track 101° to cross TEEZE at 6000 and at 210K, then on track 101°. Expect RADAR vectors to final approach course.

LANDING KTZR/KLCK: From MELZZ on track 190° to cross MAJGE at 7000, then on track 190°. Expect RADAR vectors to final approach course.

LANDING KOSU: From MELZZ on track 111° to cross VBILT at 5000, then on track 111°. Expect RADAR vectors to final approach course.

EC-2, 22 FEB 2024 to 21 MAR 2024

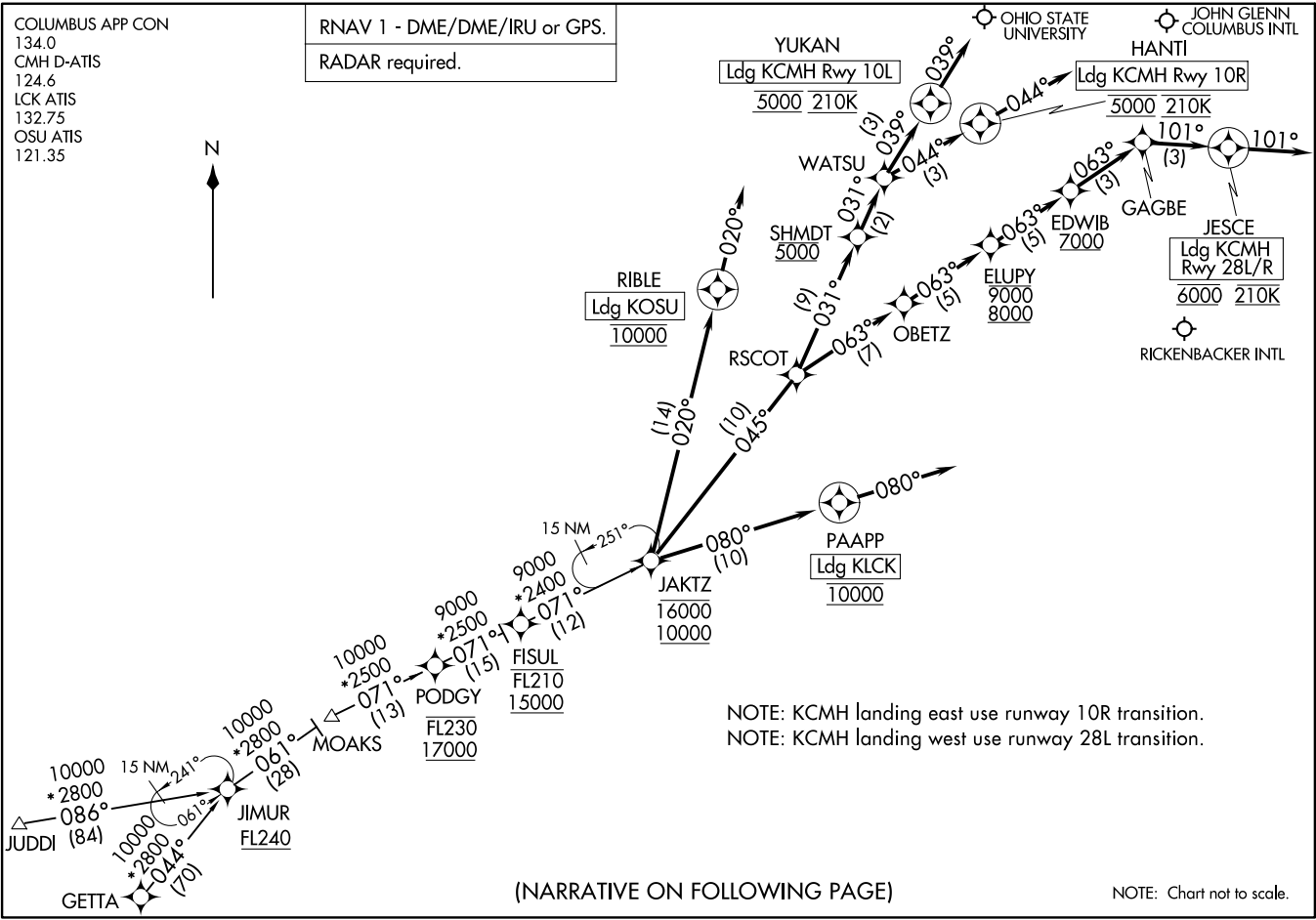
EC-2, 22 FEB 2024 to 21 MAR 2024

JAKTZ.JAKTZ2) 23FEB23

JAKTZ TWO ARRIVAL

COLUMBUS APP CON
 134.0
 CMH D-ATIS
 124.6
 LCK ATIS
 132.75
 OSU ATIS
 121.35

RNAV 1 - DME/DME/IRU or GPS.
 RADAR required.



COLUMBUS, OHIO

COLUMBUS, OHIO

JAKTZ.JAKTZ2) 23054

AL-94 (FAA)

(NARRATIVE ON FOLLOWING PAGE)

NOTE: Chart not to scale.

ARRIVAL ROUTE DESCRIPTION

GETTA TRANSITION (GETTA.JAKTZ2)

JUDDI TRANSITION (JUDDI.JAKTZ2)

KCMH: From JAKTZ on track 045° to RSCOT.

LANDING KCMH RUNWAY 10L: From RSCOT on track 031° to cross SHMDT at 5000, then on track 031° to WATSU, then on track 039° to cross YUKAN at 5000 and at 210K, then on track 039°. Expect RNAV (RNP) Z Rwy 10L or RADAR vectors to ILS or LOC RWY 10L approach.

LANDING KCMH RUNWAY 10R: From RSCOT on track 031° to cross SHMDT at 5000, then on track 031° to WATSU, then on track 044° to cross HANTI at 5000 and at 210K, then on track 044°. Expect RNAV (RNP) Z Rwy 10R or RADAR vectors to ILS or LOC Rwy 10R approach.

LANDING KCMH RUNWAY 28L/R: From RSCOT on track 063° to OBETZ, then on track 063° to cross ELUPY between 8000 and 9000, then on track 063° to cross EDWIB at or above 7000, then on track 063° to GAGBE, then on track 101° to cross JESCE at 6000 and at 210K, then on track 101°. Expect RADAR vectors to final approach course.

LANDING KLCK: From JAKTZ on track 080° to cross PAAPP at 10000, then on track 080°. Expect RADAR vectors to final approach course.

LANDING KOSU: From JAKTZ on track 020° to cross RIBLE at 10000, then on track 020°. Expect RADAR vectors to final approach course.

EC-2, 22 FEB 2024 to 21 MAR 2024

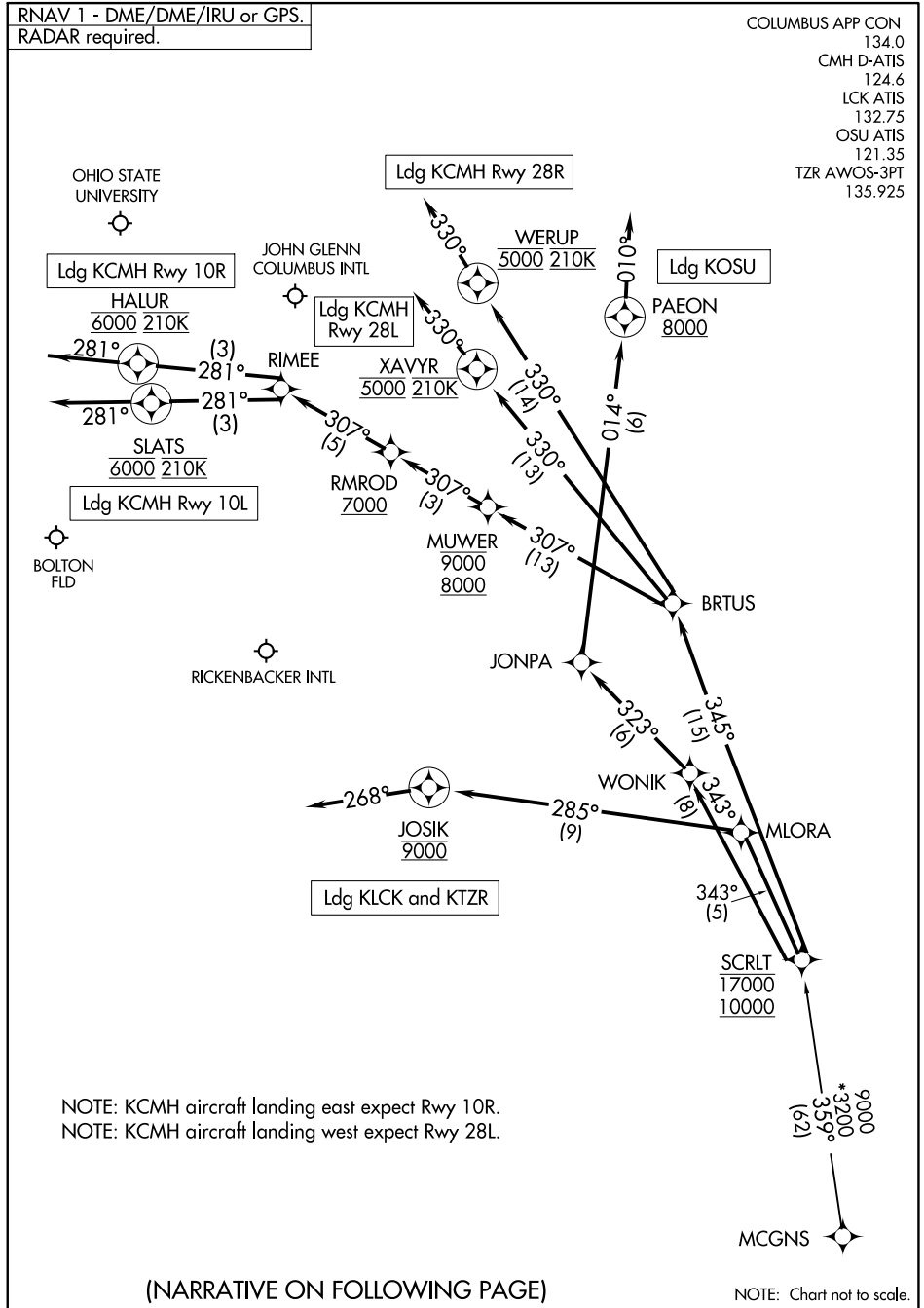
EC-2, 22 FEB 2024 to 21 MAR 2024

SCRLT ONE ARRIVAL (RNAV)

COLUMBUS, OHIO

RNAV 1 - DME/DME/IRU or GPS.
RADAR required.

COLUMBUS APP CON 134.0
 CMH D-ATIS 124.6
 LCK ATIS 132.75
 OSU ATIS 121.35
 TZR AWOS-3PT 135.925



EC-2, 22 FEB 2024 to 21 MAR 2024

EC-2, 22 FEB 2024 to 21 MAR 2024

NOTE: KCMH aircraft landing east expect Rwy 10R.
 NOTE: KCMH aircraft landing west expect Rwy 28L.

(NARRATIVE ON FOLLOWING PAGE)

NOTE: Chart not to scale.

SCRLT ONE ARRIVAL (RNAV)

COLUMBUS, OHIO

SCRLT ONE ARRIVAL (RNAV)

COLUMBUS, OHIO

ARRIVAL ROUTE DESCRIPTION

MCGNS TRANSITION (MCGNS.SCRLT1)

KCMH: from SCRLT on track 345° to BRTUS.

LANDING KCMH RUNWAY 10L: From BRTUS on track 307° to cross MUWER between 8000 and 9000, then on track 307° to cross RMROD at or above 7000, then on track 307° to RIMEE, then on track 281° to cross SLATS at 6000 and at 210K, then on track 281°. Expect RADAR vectors to final approach course.

LANDING KCMH RUNWAY 10R: From BRTUS on track 307° to cross MUWER between 8000 and 9000, then on track 307° to cross RMROD at or above 7000, then on track 307° to RIMEE, then on track 281° to cross HALUR at 6000 and at 210K, then on track 281°. Expect RADAR vectors to final approach course.

LANDING KCMH RUNWAY 28L: From BRTUS on track 330° to cross XAVYR at 5000 and at 210K, then on track 330°. Expect RADAR vectors to ILS or LOC Rwy 28L approach.

LANDING KCMH RUNWAY 28R: From BRTUS on track 330° to cross WERUP at 5000 and at 210K, then on track 330°. Expect RADAR vectors to ILS or LOC Rwy 28R approach.

LANDING KTZR/KLCK: From SCRLT on track 343° to MLORA, then on track 285° to cross JOSIK at 9000, then on track 268°. Expect RADAR vectors to final approach course.

LANDING KOSU: From SCRLT on track 343° to WONIK, then on track 323° to JONPA, then on track 014° cross PAEON at 8000, then on track 010°. Expect RADAR vectors to final approach course.

EC-2, 22 FEB 2024 to 21 MAR 2024

EC-2, 22 FEB 2024 to 21 MAR 2024