

LOC/DME I-OSS 108.5 Chan 22	APP CRS 251°	Rwy Idg 8926 TDZE 122 Apt Elev 128
---	------------------------	---

ILS RWY 24R (CAT II & III)

LOS ANGELES INTL (LAX)

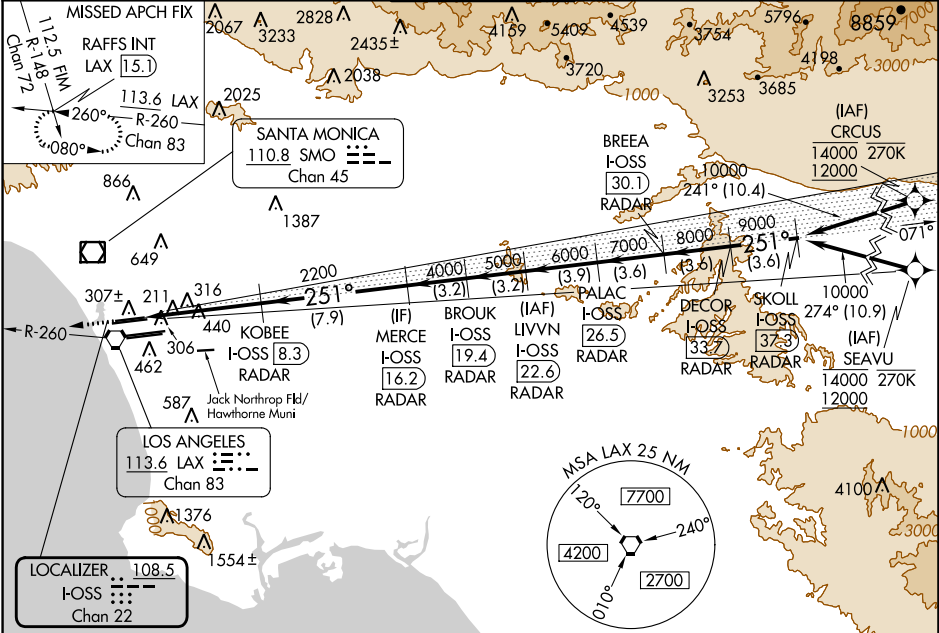
From CRCUS, SEAVU: RNAV 1-GPS required. DME or RADAR required.



MISSED APPROACH: Climb to 2000 on heading 251° and LAX VORTAC R-260 to RAFFS INT/LAX 15.1 DME and hold.

Simultaneous approach authorized with HHR.
Simultaneous approach authorized.

D-ATIS ARR 133.8 DEP 135.65	SOCAL APP CON 124.3 363.2 (APCH FM WEST) 124.5 235.975 (225°-044°) 124.9 269.0 (090°-224°) 128.5 360.7 (045°-089°)	LOS ANGELES TOWER N 133.9 239.3 S 120.95 379.1	GND CON N 121.65 327.0 S 121.75 327.0 W 121.4 327.0	CLNC DEL 120.35 327.0	CPDLC
---	--	--	---	---	-------



SW-3, 22 FEB 2024 to 21 MAR 2024

SW-3, 22 FEB 2024 to 21 MAR 2024

ELEV 128	TDZE 122	2000 ↑ hdg 251°	LAX R-260	RAFFS INT	VGSI and ILS glidepath not coincident (VGSI Angle 3.00/TCH 73).	DECOR I-OSS 33.7	SKOLL I-OSS 37.3			
		KOBEE I-OSS 8.3		MERC I-OSS 16.2	BROOK I-OSS 19.4	LIVVN I-OSS 22.6	PALAC I-OSS 26.3	BREA I-OSS 30.1	RAFFS INT I-OSS 33.7	SKOLL I-OSS 37.3
		2200		4000	5000	6000	7000	8000	9000	10000
		10227	6.4 NM	7.9 NM	3.2 NM	3.2 NM	3.9 NM	3.6 NM	3.6 NM	3.6 NM
		CATEGORY	A	B	C	D				
		S-ILS 24R	CAT II RA 118/12 100 DA 222							
		S-ILS 24R	CAT III RVR 06							
CATEGORY II & III ILS - SPECIAL AIRCREW & AIRCRAFT CERTIFICATION REQUIRED										

TDZ/CL Rwy 6L, 7L, 24R, and 25L
HIRL all Rwy

33°57'N-118°24'W

LOS ANGELES INTL (LAX)

ILS RWY 24R (CAT II & III)

LOC/DME I-LAX 109.9 Chan 36	APP CRS 251°	Rwy ldg 11095 TDZE 104 Apt Elev 128
--	------------------------	--

ILS RWY 25L (CAT II & III)

LOS ANGELES INTL (LAX)

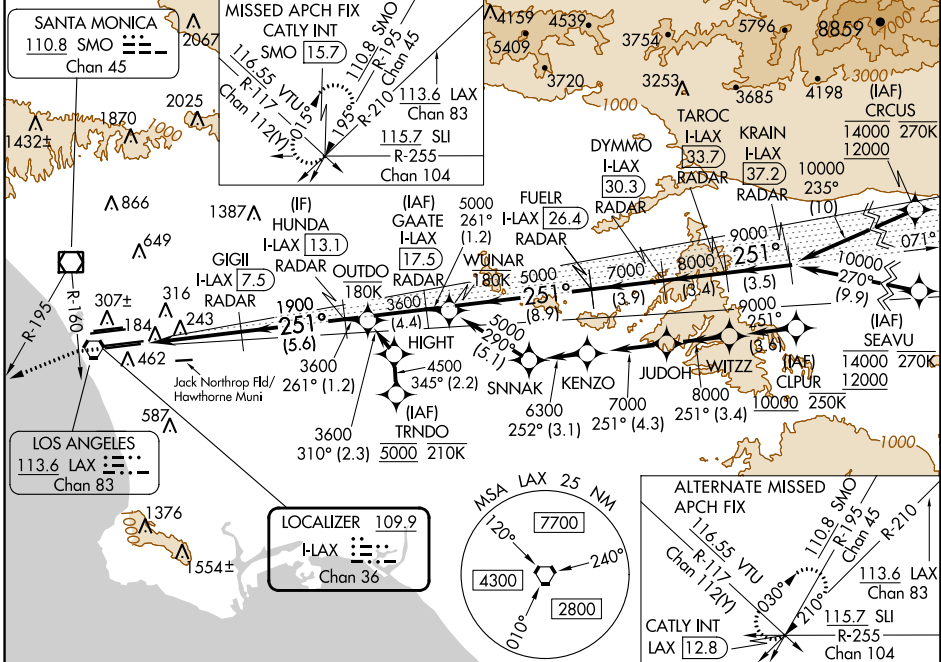
RNP APCH - GPS. From CLIPUR or CRCUS or SEAVU or TRNDO.
DME or RADAR required.

Simultaneous approach authorized.
Simultaneous approach authorized with HHR.



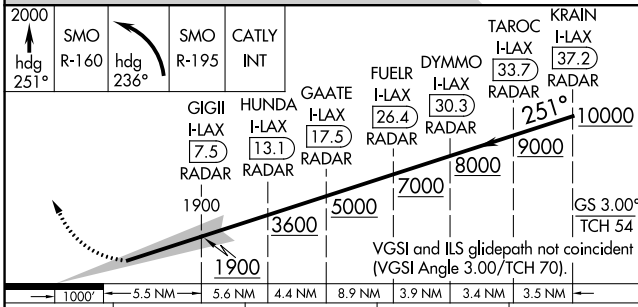
MISSED APPROACH: Climb to 2000 on heading 251° until crossing the SMO R-160 then left turn on heading 236° and on the SMO R-195 to CATLY INT/SMO 15.7 DME and hold.

D-ATIS ARR 133.8 DEP 135.65	SOCAL APP CON 124.3 363.2 (APCH FM WEST) (225°-044°)	124.9 269.0 (090°-224°)	LOS ANGELES TOWER N 133.9 239.3 S 120.95 379.1	GND CON N 121.65 327.0 S 121.75 327.0 W 121.4 327.0	CLNC DEL 120.35 327.0	CPDLC
---	--	-----------------------------------	--	---	---	-------



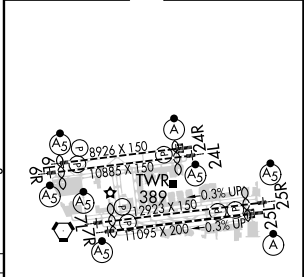
SW-3, 22 FEB 2024 to 21 MAR 2024

SW-3, 22 FEB 2024 to 21 MAR 2024



ELEV 128	D	TDZE 104
----------	----------	----------

CATEGORY	A	B	C	D
S-ILS 25L	CAT II RA 107/12 100 DA 204			
S-ILS 25L	CAT III RVR 06			



CATEGORY II & III ILS - SPECIAL AIRCREW & AIRCRAFT CERTIFICATION REQUIRED

TDZ/CL Rwy's 6R, 7L, 24R, and 25L
HIRL all Rwy's

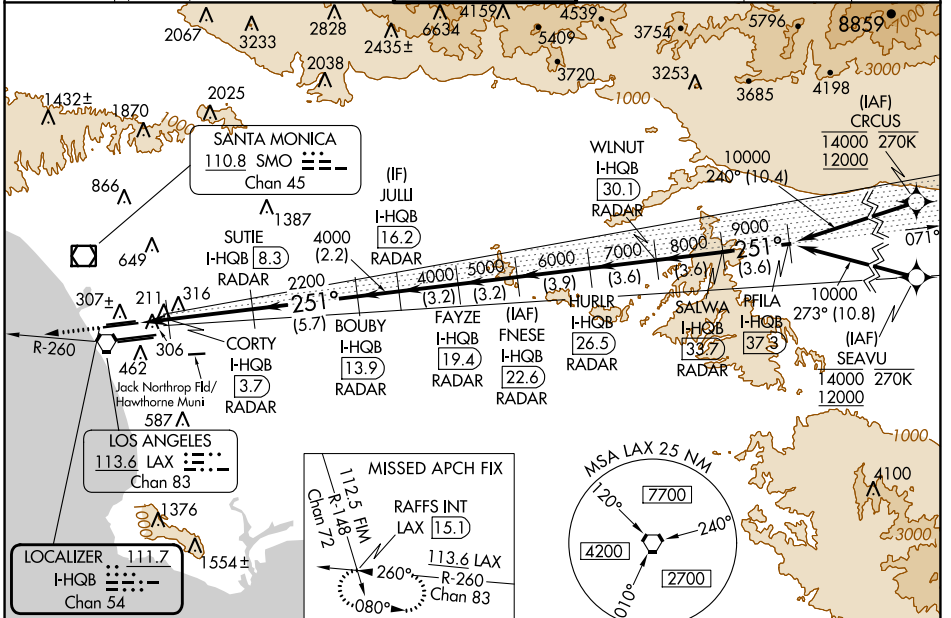
LOC/DME I-HQB 111.7 Chan 54	APP CRS 251°	Rwy Idg TDZE Apt Elev	24L 9483 123 128	24R 8926 122 128
---	------------------------	-----------------------------	--	--

ILS or LOC RWY 24L

LOS ANGELES INTL (LAX)

RNAV 1-GPS or RADAR required for procedure entry. DME or RADAR required. From CRCUS: RNAV 1-GPS required. From SEAVU: RNAV 1-GPS required.		MALSR Rwy 24L 	ALSF-2 Rwy 24R 	MISSED APPROACH: Climb to 2000 on heading 251° and LAX VORTAC R-260 to RAFFS INT/LAX 15.1 DME and hold.
<p>Simultaneous approach authorized with HHR. Inop table does not apply to Sidestep Rwy 24R Cat A and B. Simultaneous approach authorized. LOC procedure NA during simultaneous operations with HHR LOC RWY 25. For inop ALS, increase Sidestep 24R Cat C visibility to 1½ SM. For inop ALS, increase S-LOC 24L Cat C/D visibility to RVR 5500. #RVR 1800 authorized with use of FD or AP or HUD to DA.</p>				

D-ATIS ARR 133.8 DEP 135.65	SOCAL APP CON 124.3 363.2 (APCH FM WEST) 124.5 235.975 (225°-044°)	124.9 269.0 (090°-224°) 128.5 360.7 (045°-089°)	LOS ANGELES TOWER N 133.9 239.3 S 120.95 379.1	GND CON N 121.65 327.0 S 121.75 327.0 W 121.4 327.0	CLNC DEL 120.35 327.0	CPDLC
---	--	--	--	---	---	-------



ELEV 128	TDZE 24L 123	TDZE 24R 122	VGSI and ILS glidepath not coincident (VGSI Angle 3.00/TCH 79).						
<p>↑ hdg 251°</p> <p>*LOC only.</p>		LAX R-260	RAFFS INT	SALWA I-HQB 37.3	PFILA I-HQB 37.3				
<p>2000</p> <p>10000</p>		CORTY I-HQB 3.7	BOUBY I-HQB 13.9	JULLI I-HQB 16.2	FAYZE I-HQB 19.4	FNESE I-HQB 22.6	HURLR I-HQB 26.5	WLNUT I-HQB 30.1	RAFFS INT I-HQB 15.1
<p>740*</p> <p>2200</p>		SUTIE I-HQB 8.3	BOUBY I-HQB 13.9	JULLI I-HQB 16.2	FAYZE I-HQB 19.4	FNESE I-HQB 22.6	HURLR I-HQB 26.5	WLNUT I-HQB 30.1	RAFFS INT I-HQB 15.1
<p>1 NM 0.8</p> <p>4.6 NM 5.7 NM 2.2 NM 3.2 NM 3.2 NM 3.9 NM 3.6 NM 3.6 NM 3.6 NM</p>		CORTY I-HQB 3.7	BOUBY I-HQB 13.9	JULLI I-HQB 16.2	FAYZE I-HQB 19.4	FNESE I-HQB 22.6	HURLR I-HQB 26.5	WLNUT I-HQB 30.1	RAFFS INT I-HQB 15.1
<p>TDZ/CL Rwy 6L, 7L, 24R, and 25L</p> <p>HIRL all Rwy</p> <p>FAF to MAP 6.4 NM</p>		S-ILS 24L#		323/24		200 (200-½)			
<p>Knots 60 90 120 150 180</p> <p>Min:Sec 6:24 4:16 3:12 2:34 2:08</p>		S-LOC 24L		500/24		377 (400-½)		500/35 377 (400-¾)	
		SIDESTEP 24R		500/55		378 (400-1)		500-1½ 378 (400-1½)	

SW-3, 22 FEB 2024 to 21 MAR 2024

SW-3, 22 FEB 2024 to 21 MAR 2024

LOC/DME I-OSS 108.5 Chan 22	APP CRS 251°	Rwy Idg 24R	8926	9483
		TDZE	122	123
		Apt Elev	128	128

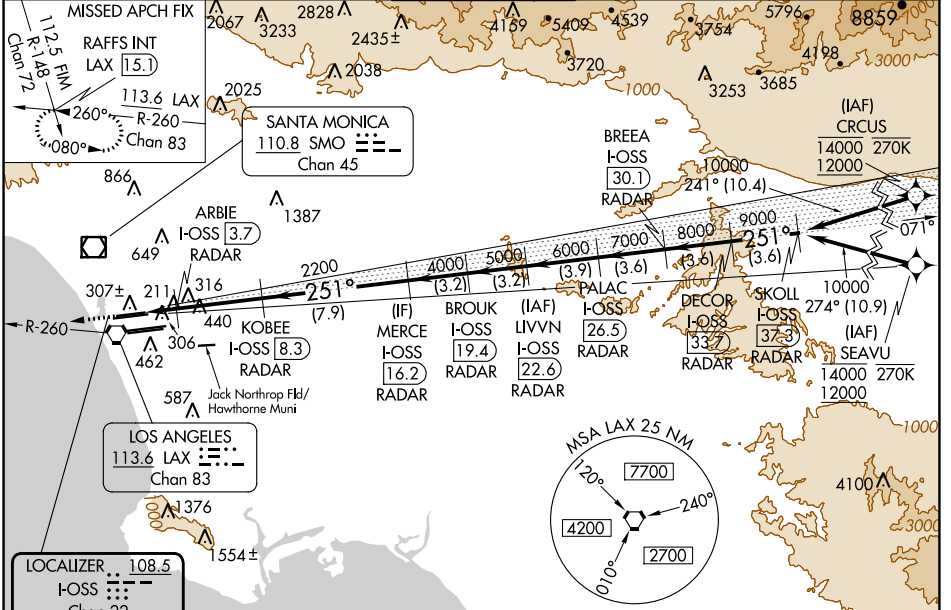
ILS or LOC RWY 24R

LOS ANGELES INTL (LAX)

From CRCUS, SEAVU: RNAV 1-GPS required. DME or RADAR required.

ALSF-2 Rwy 24R 	MALSR Rwy 24L 	MISSED APPROACH: Climb to 2000 on heading 251° and LAX VORTAC R-260 to RAFFS INT/LAX 15.1 DME and hold.
------------------------------	-----------------------------	--

D-ATIS ARR 133.8 DEP 135.65	SOCAL APP CON 124.3 363.2 [APCH FM WEST] [225°-044°] 124.9 269.0 [090°-224°] 124.5 235.975 [045°-089°] 128.5 360.7	LOS ANGELES TOWER N 133.9 239.3 S 120.95 379.1	GND CON N 121.65 327.0 S 121.75 327.0 W 121.4 327.0	CLNC DEL 120.35 327.0	CPDLC
---	--	--	---	---	-------



SW-3, 22 FEB 2024 to 21 MAR 2024

SW-3, 22 FEB 2024 to 21 MAR 2024

ELEV 128	TDZE 24R 122	TDZE 24L 123	VGSi and ILS glidepath not coincident (VGSi Angle 3.00/TCH 73).				SKOLL I-OSS 37.3																					
			<table border="1"> <tr> <td>LAX R-260</td> <td>RAFFS INT</td> <td>DECOR I-OSS 37.3</td> <td>BREEA I-OSS 30.1</td> <td>PALAC I-OSS 26.5</td> <td>LIVVN I-OSS 22.6</td> <td>BROUK I-OSS 19.4</td> <td>MERC I-OSS 16.2</td> <td>KOBEE I-OSS 8.3</td> <td>ARBIE I-OSS 3.7</td> </tr> </table>				LAX R-260	RAFFS INT	DECOR I-OSS 37.3	BREEA I-OSS 30.1	PALAC I-OSS 26.5	LIVVN I-OSS 22.6	BROUK I-OSS 19.4	MERC I-OSS 16.2	KOBEE I-OSS 8.3	ARBIE I-OSS 3.7	GS 3.00°	TCH 55										
LAX R-260	RAFFS INT	DECOR I-OSS 37.3	BREEA I-OSS 30.1	PALAC I-OSS 26.5	LIVVN I-OSS 22.6	BROUK I-OSS 19.4	MERC I-OSS 16.2	KOBEE I-OSS 8.3	ARBIE I-OSS 3.7																			
TDZ/CL Rwy 6L, 7L, 24R, and 25L HIRL all Rwy FAF to MAP 6.4 NM			<table border="1"> <tr> <th>CATEGORY</th> <th>A</th> <th>B</th> <th>C</th> <th>D</th> </tr> <tr> <td>S-ILS 24R</td> <td colspan="4">322/18 200 (200-½)</td> </tr> <tr> <td>S-LOC 24R</td> <td>480/24</td> <td>358 (400-½)</td> <td>480/30</td> <td>358 (400-¾)</td> </tr> <tr> <td>SIDESTEP 24L</td> <td colspan="3">500/55 377 (400-1)</td> <td>500-1½ 377 (400-1½)</td> </tr> </table>				CATEGORY	A	B	C	D	S-ILS 24R	322/18 200 (200-½)				S-LOC 24R	480/24	358 (400-½)	480/30	358 (400-¾)	SIDESTEP 24L	500/55 377 (400-1)			500-1½ 377 (400-1½)		
CATEGORY	A	B	C	D																								
S-ILS 24R	322/18 200 (200-½)																											
S-LOC 24R	480/24	358 (400-½)	480/30	358 (400-¾)																								
SIDESTEP 24L	500/55 377 (400-1)			500-1½ 377 (400-1½)																								
Knots	60	90	120	150	180																							
Min:Sec	6:24	4:16	3:12	2:34	2:08																							

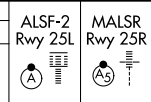
LOC/DME I-LAX	APP CRS	Rwy ldg	25L	25R
109.9	251°	11095	11134	
Chan 36		TDZE	104	104
		Apt Elev	128	128

ILS or LOC RWY 25L

LOS ANGELES INTL (LAX)

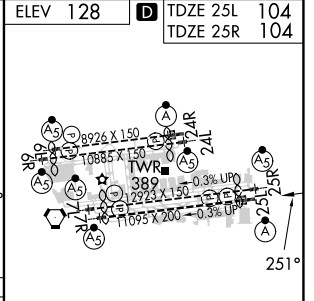
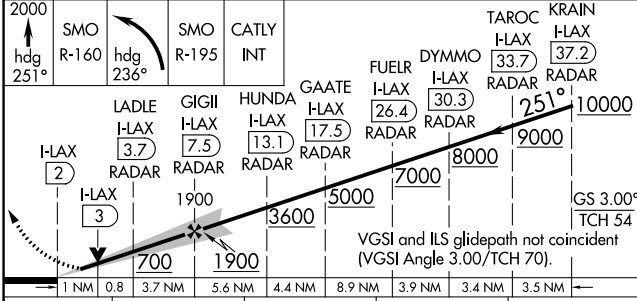
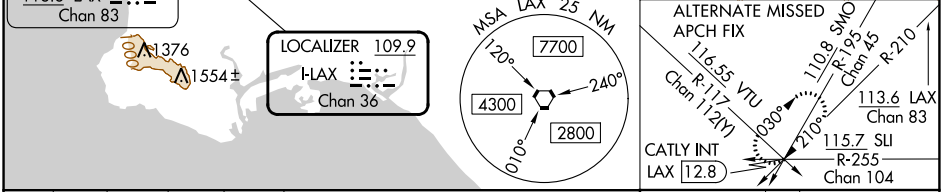
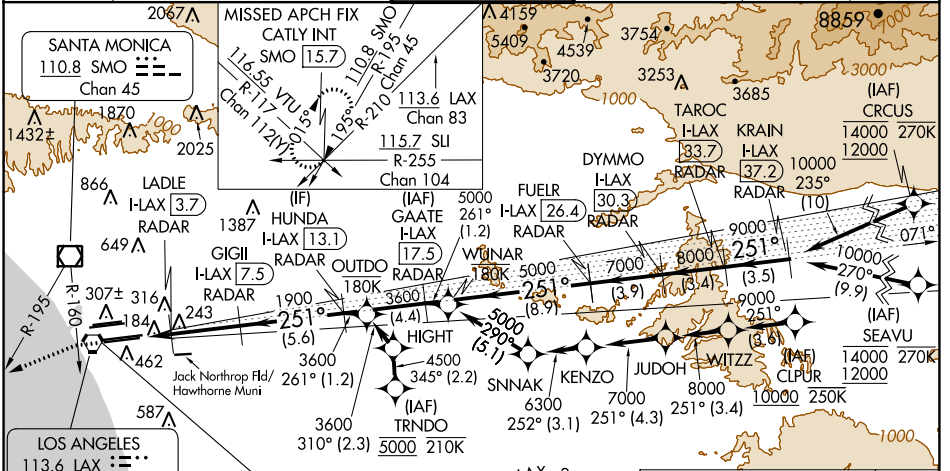
RNP APCH - GPS. From CLIPUR or CRUCUS or SEAVU or TRNDO. DME or RADAR required.

Simultaneous approach authorized. Simultaneous approach authorized with HHR.



MISSED APPROACH: Climb to 2000 on heading 251° until crossing the SMO R-160, then left turn on heading 236° and on the SMO R-195 to CATLY INT/ SMO 15.7 DME and hold.

D-ATIS	SOCAL APP CON	LOS ANGELES TOWER	GND CON	CLNC DEL	CPDLC
ARR 133.8	124.3 363.2 (APCH FM WEST)	124.9 269.0 (090°-224°)	N 121.65 327.0 S 121.75 327.0 W 121.4 327.0	120.35 327.0	
DEP 135.65	124.5 235.975 (225°-044°)	128.5 360.7 (045°-089°)			



ELEV 128	TDZE 25L 104	TDZE 25R 104
S-ILS 25L 304/18 200 (200-1/2)		
S-LOC 25L 480/24 376 (400-1/2) 480/35 376 (400-3/4)		
SIDESTEP 25R 480/55 376 (400-1) 480-1 1/2 376 (400-1 1/2)		
TDZ/CL Rwy's 6R, 7L, 24R, and 25L HIRL all Rwy's		
FAF to MAP 5.5 NM		
Knots	60	90 120 150 180
Min:Sec	5:30	3:40 2:45 2:12 1:50

SW-3, 22 FEB 2024 to 21 MAR 2024

SW-3, 22 FEB 2024 to 21 MAR 2024

LOC/DME I-FCN 111.1 Chan 48	APP CRS 251°	Rwy ldg 1134	25R 11095	25L 11095
		TDZE 104	104	104
		Apt Elev 128	128	128

ILS or LOC RWY 25R

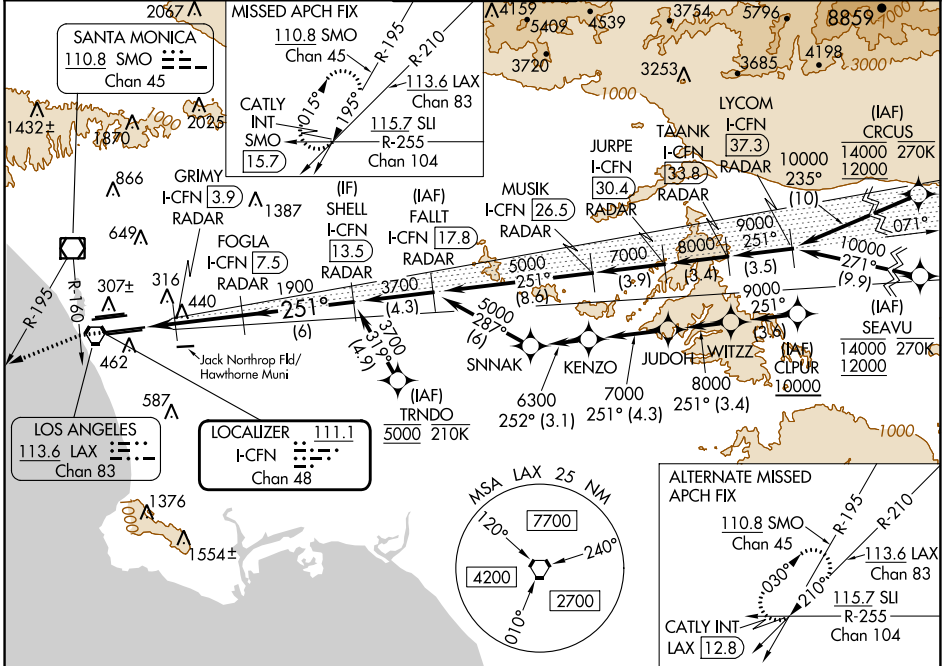
LOS ANGELES INTL (LAX)

From CRCUS, SEAVU, TRNDO, CLPUR, CLPUR: RNAV 1-GPS required.
DME or RADAR required.

Simultaneous approach authorized. Simultaneous approach authorized with HHR. For inop ALS increase Sidestep 25L Cat C visibility to 1½ SM. #RVR 1800 authorized with use of FD or AP or HUD to DA.

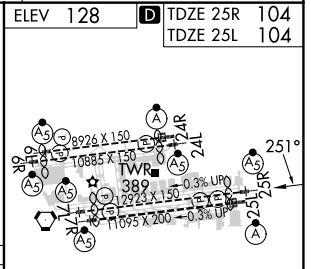
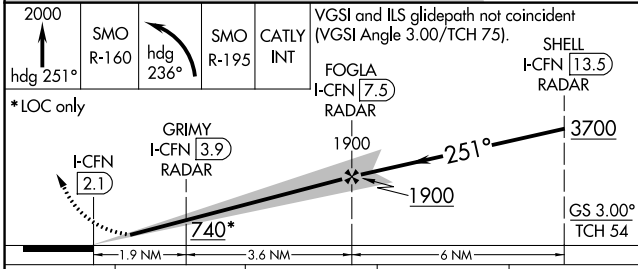
MALSR Rwy 25R	ALSF-2 Rwy 25L	MISSED APPROACH: Climb to 2000 on heading 251° until crossing SMO R-160 then left turn on heading 236° and SMO VOR/DME R-195 to CATLY INT/SMO 15.7 DME and hold.
---------------	----------------	--

D-ATIS ARR 133.8 DEP 135.65	SOCAL APP CON 124.3 363.2 (225°-044°)	SOCAL APP CON 124.9 269.0 (090°-224°)	LOS ANGELES TOWER N 133.9 239.3 S 120.95 379.1	GND CON N 121.65 327.0 S 121.75 327.0 W 121.4 327.0	CLNC DEL 120.35 327.0	CPDLC
---	--	--	--	---	---	-------



SW-3, 22 FEB 2024 to 21 MAR 2024

SW-3, 22 FEB 2024 to 21 MAR 2024



CATEGORY	A	B	C	D
S-ILS 25R#		304/24	200 (200-½)	
S-LOC 25R	700/24	596 (600-½)	700-1¼	596 (600-1¼)
SIDESTEP 25L	700/55	596 (600-1)	700-1¼	700-1½
			596 (600-1¼)	596 (600-1½)

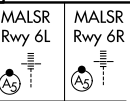
ELEV 128	TDZE 25R 104	TDZE 25L 104			
TDZ/CL Rwyys 6R, 7L, 24R, and 25L					
HIRL all Rwyys					
FAF to MAP 5.5 NM					
Knots	60	90	120	150	180
Min:Sec	5:30	3:40	2:45	2:12	1:50

LOC/DME I-UWU 108.5 Chan 22	APP CRS 071°	Rwy ldg 6L 8566 TDZE 119 Apt Elev 128	6R 9748 116 128
---	------------------------	--	--

ILS or LOC RWY 6L

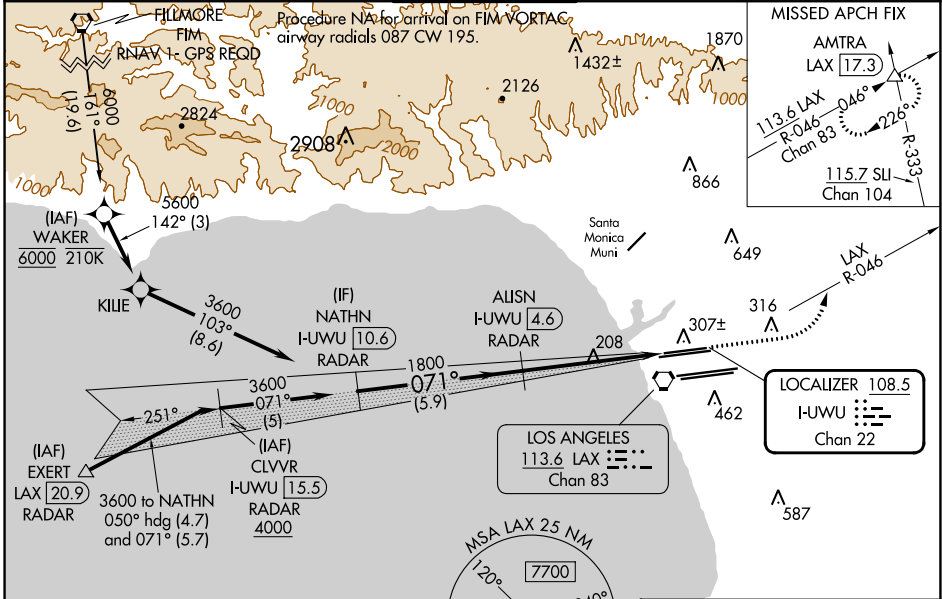
LOS ANGELES INTL (LAX)

▼ Inop table does not apply to Sidestep 6R Cats A/B. For inop ALS, increase S-LOC 6L Cat C/D visibility to RVR 5500. Simultaneous approach authorized. Autopilot coupled approach NA below 503.



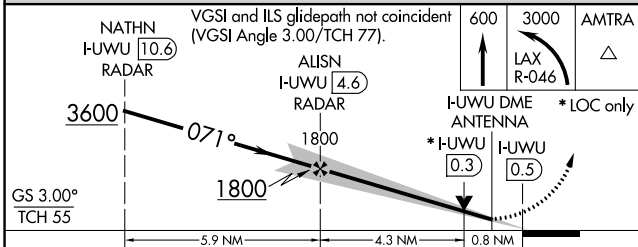
MISSED APPROACH: Climb to 600 then climbing left turn to 3000 on LAX VORTAC R-046 to AMTRA INT/LAX 17.3 DME and hold.

D-ATIS ARR 133.8 DEP 135.65	SOCAL APP CON 124.3 363.2 (APCH FM WEST) 124.5 235.975 (225°-044°)	124.9 269.0 (090°-224°) 128.5 360.7 (045°-089°)	LOS ANGELES TOWER N 133.9 239.3 S 120.95 379.1	GND CON N 121.65 327.0 S 121.75 327.0 W 121.4 327.0	CLNC DEL 120.35 327.0	CPDLC
---	--	--	--	---	---	-------



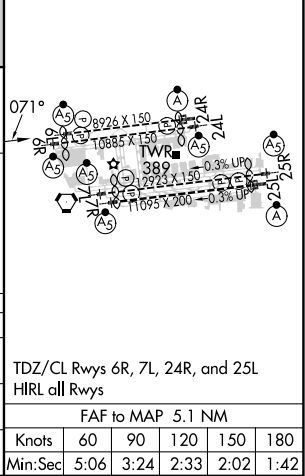
Procedure NA for arrivals at EXERT on V25 southwest bound, V27 northwest bound.

DME or RADAR REQUIRED



ELEV 128	D TDZE 6L 119
	TDZE 6R 116

CATEGORY	A	B	C	D
S-ILS 6L	369/24 250 (300-½)			
S-LOC 6L	460/24 341 (400-½)		460/30 341 (400-¾)	
SIDESTEP 6R	460/55 344 (400-1)			460-1½ 344 (400-1½)



SW-3, 22 FEB 2024 to 21 MAR 2024

SW-3, 22 FEB 2024 to 21 MAR 2024

TDZ/CL Rwy 6R, 7L, 24R, and 25L HIRL all Rwy	FAF to MAP 5.1 NM					
	Knots	60	90	120	150	180
	Min:Sec	5:06	3:24	2:33	2:02	1:42

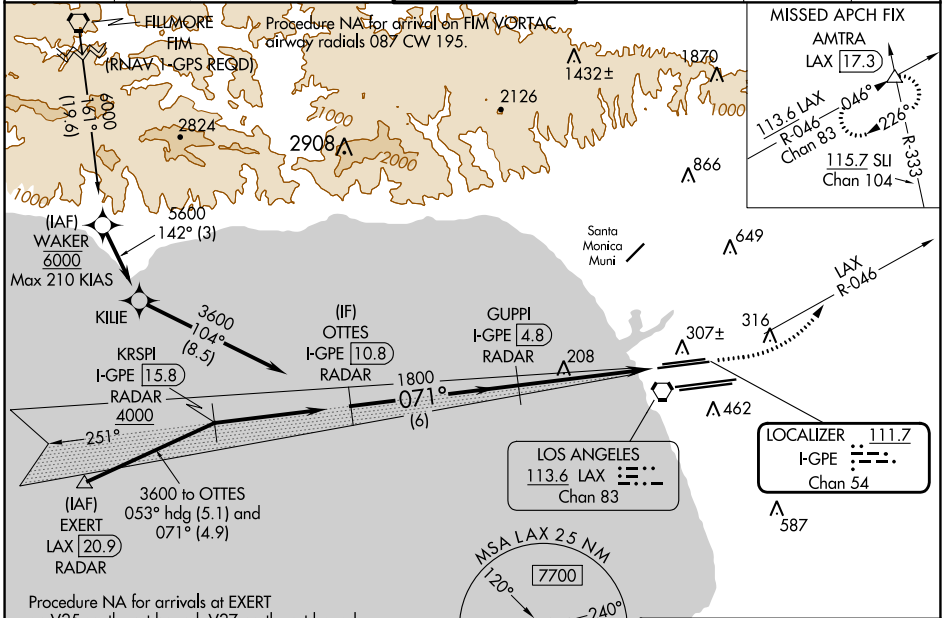
LOC/DME I-GPE 111.7 Chan 54	APP CRS 071°	Rwy ldg 6R TDZE 9748 Apt Elev 116	6L 8566 119 128
---	------------------------	---	--

ILS or LOC RWY 6R

LOS ANGELES INTL (LAX)

Simultaneous approach authorized. For inop ALS, increase S-LOC 6R Cat C/D visibility to RVR 5500. Inop table does not apply to Sidestep 6L Cats A and B.
RVR 1800 authorized with use of FD or AP or HUD to DA.

D-ATIS ARR 133.8 DEP 135.65	SOCAL APP CON 124.3 363.2 [ARCH FM WEST] 124.5 235.975 [223°-044°]	124.9 269.0 [090°-224°] 128.5 360.7 [045°-089°]	LOS ANGELES TOWER N 133.9 239.3 S 120.95 379.1	GND CON N 121.65 327.0 S 121.75 327.0 W 121.4 327.0	CLNC DEL 120.35 327.0	CPDLC
---	--	--	--	---	---	-------

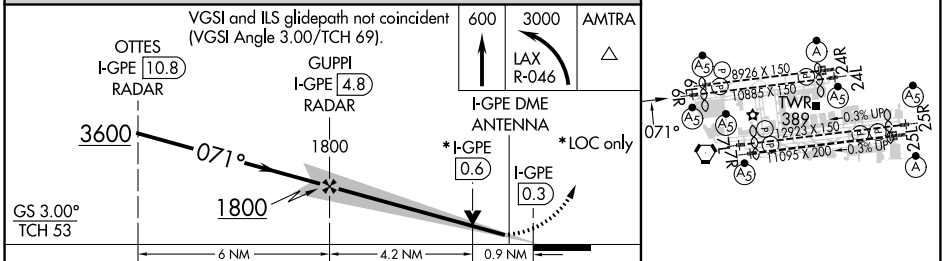


SW-3, 22 FEB 2024 to 21 MAR 2024

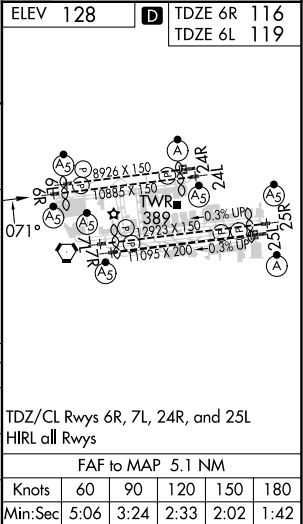
SW-3, 22 FEB 2024 to 21 MAR 2024

ELEV 128	TDZE 6R 116	TDZE 6L 119
----------	-------------	-------------

DME or RADAR REQUIRED



CATEGORY	A	B	C	D
S-ILS 6R#	316/24 200 (200-1/2)			
S-LOC 6R	460/24 344 (400-1/2)		460/30 344 (400-5/8)	
SIDESTEP 6L	460/55 341 (400-1)			460-1 1/2 341 (400-1/2)



LOC/DME I-AS 111.1 Chan 48	APP CRS 071°	Rwy Idg 11259 11095 TDZE 128 128 Apt Elev 128 128
--	------------------------	--

ILS or LOC RWY 7L

LOS ANGELES INTL (LAX)

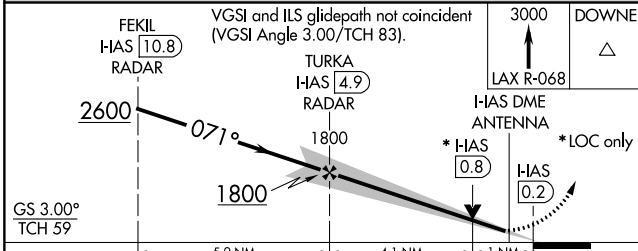
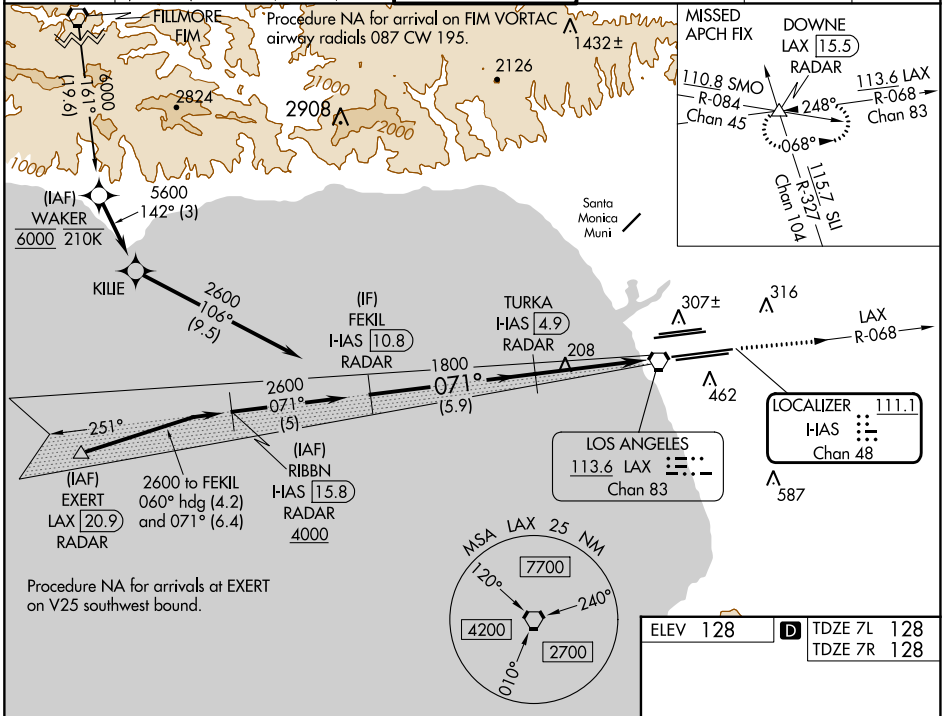
From FIM VORTAC: RNAV 1-GPS required. DME or RADAR required.

Simultaneous approach authorized. Autopilot coupled approach NA below 925. Inop table does not apply to Sidestep Rwy 7R Cats A and B.

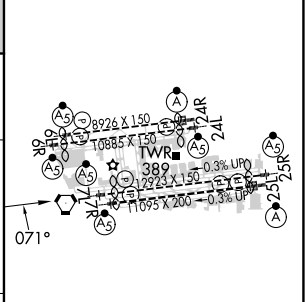
MALS Rwy 7L MALS Rwy 7R

MISSED APPROACH: Climb to 3000 on LAX VORTAC R-068 to DOWNE INT/LAX 15.5 DME/RADAR and hold.

D-ATIS ARR 133.8 DEP 135.65	SOCAL APP CON 124.3 363.2 (APCH FM WEST) 124.5 235.975 (225°-044°)	124.9 269.0 (090°-224°) 128.5 360.7 (045°-089°)	LOS ANGELES TOWER N 133.9 239.3 S 120.95 379.1	GND CON N 121.65 327.0 S 121.75 327.0 W 121.4 327.0	CLNC DEL 120.35 327.0	CPDLC
---	--	--	--	---	---	-------



ELEV 128	D TDZE 7L 128
	TDZE 7R 128



CATEGORY	A	B	C	D
S-ILS 7L	336/18		208 (300-½)	
S-LOC 7L	520/24 392 (400-½)		520/35 392 (400-¾)	
SIDESTEP 7R	520/55 392 (400-1)			520-1½ 392 (400-1½)

TDZ/CL Rwy's 6R, 7L, 24R, and 25L
HIRL all Rwy's

FAF to MAP 5.1 NM

Knots	60	90	120	150	180
Min:Sec	5:06	3:24	2:33	2:02	1:42

SW-3, 22 FEB 2024 to 21 MAR 2024

SW-3, 22 FEB 2024 to 21 MAR 2024

LOC/DME I-MKZ 109.9 Chan 36	APP CRS 071°	Rwy Idg TDZE Apt Elev	7R 11095 128 128	7L 11259 128 128
---	------------------------	-----------------------------	--	--

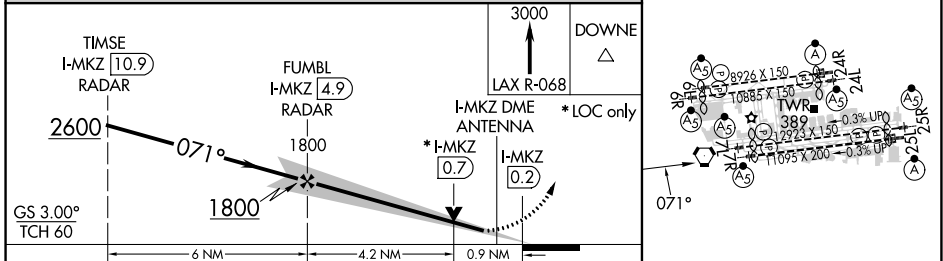
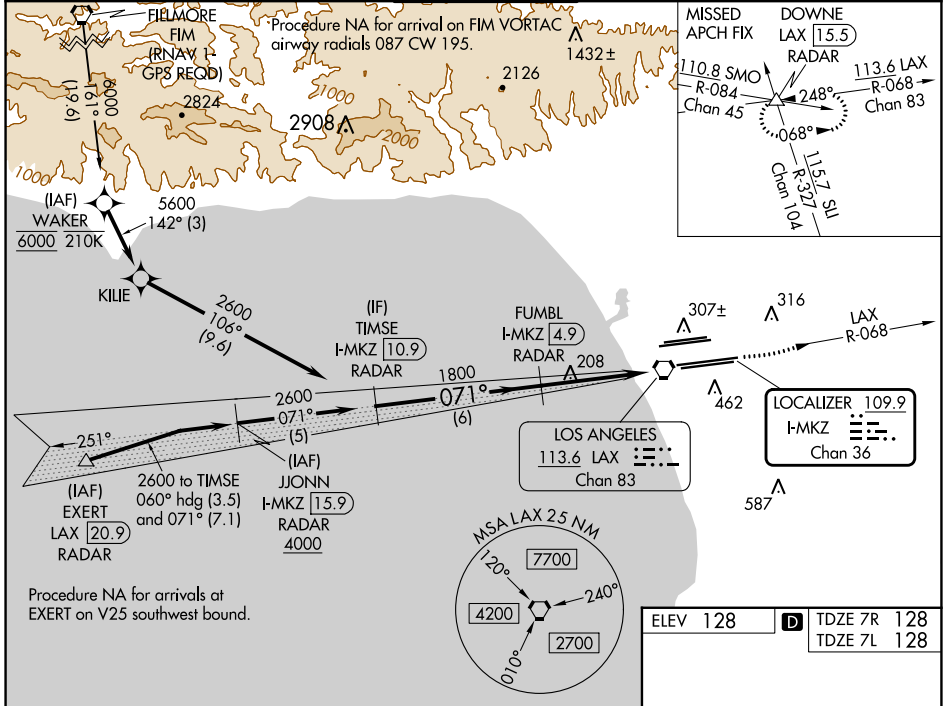
ILS or LOC RWY 7R

LOS ANGELES INTL (LAX)

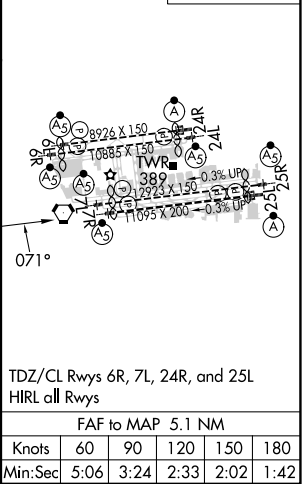
Simultaneous approach authorized. DME or RADAR required.
Inop table does not apply to Sidestep Rwy 7L Cats A and B.
RVR 1800 authorized with use of FD or AP or HUD to DA.

MALS Rwy 7R	MALS Rwy 7L	MISSED APPROACH: Climb to 3000 on LAX VORTAC R-068 to DOWNE INT/ LAX 15.5 DME/RADAR and hold.
----------------	----------------	--

D-ATIS ARR 133.8 DEP 135.65	SOCAL APP CON 124.3 363.2 (APCH FM WEST) 124.5 235.975 (225°-044°)	124.9 269.0 (090°-224°) 128.5 360.7 (045°-089°)	LOS ANGELES TOWER N 133.9 239.3 S 120.95 379.1	GND CON N 121.65 327.0 S 121.75 327.0 W 121.4 327.0	CLNC DEL 120.35 327.0	CPDLC
---	--	--	--	---	---	-------



ELEV 128	D TDZE 7R 128	TDZE 7L 128
----------	----------------------	-------------



SW-3, 22 FEB 2024 to 21 MAR 2024

SW-3, 22 FEB 2024 to 21 MAR 2024

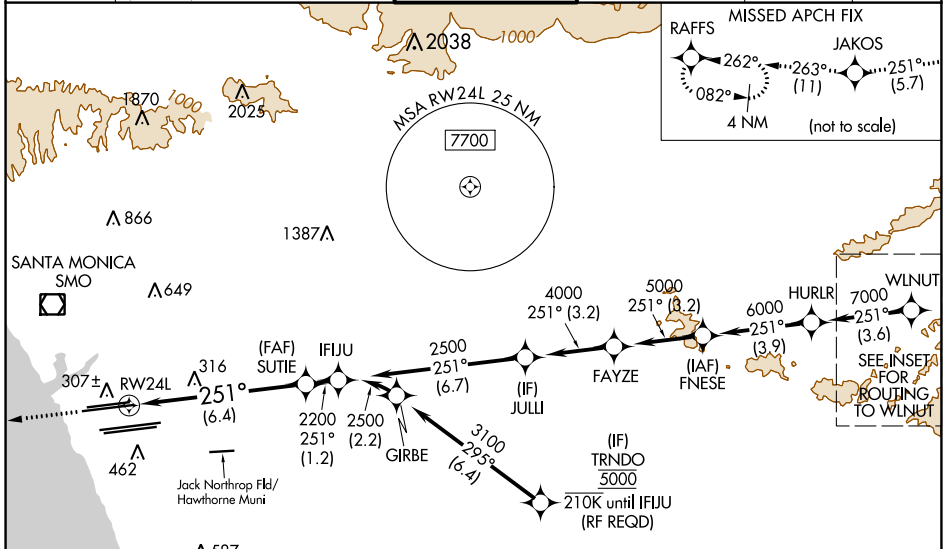
RNAV (RNP) Z RWY 24L

LOS ANGELES INTL (LAX)

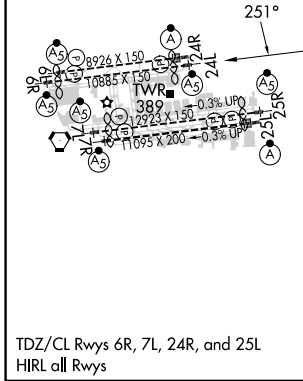
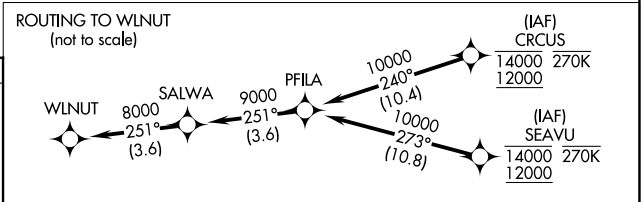
APP CRS	Rwy Idg	9483
251°	TDZE	123
	Apt Elev	128

RNP AR APCH.	MALSR	MISSED APPROACH: Climb to 2000 on track 251° to JAKOS and track 263° to RAFFS and hold.
<p>Simultaneous approach authorized. Simultaneous approach authorized with HHR.</p> <p>For uncompensated Baro-VNAV systems, procedure NA below 5°C or above 54°C. For inop ALS, increase RNP 0.15 all Cats visibility to 1 3/8 SM.</p>		

D-ATIS	SOCAL APP CON	LOS ANGELES TOWER	GND CON	CLNC DEL	CPDLC
ARR 133.8	124.3 363.2 (APCH FM WEST)	124.9 269.0 (090°-224°)	N 121.65 327.0 S 121.75 327.0 W 121.4 327.0	120.35 327.0	
DEP 135.65	124.5 235.975 (225°-044°)	128.5 360.7 (045°-089°)			



ELEV 128	D	TDZE 123
-----------------	----------	-----------------



2000	JAKOS	fr 263°	RAFFS	See planview for multiple IF locations.
tr 251°				
VGSi and RNAV glidepath not coincident (VGSi Angle 3.00/TCH 79).				
				GP 3.00° TCH 59

CATEGORY	A	B	C	D
RNP 0.15 DA		545/35	422 (500-5%)	
RNP 0.30 DA		592/45	469 (500-7%)	

AUTHORIZATION REQUIRED

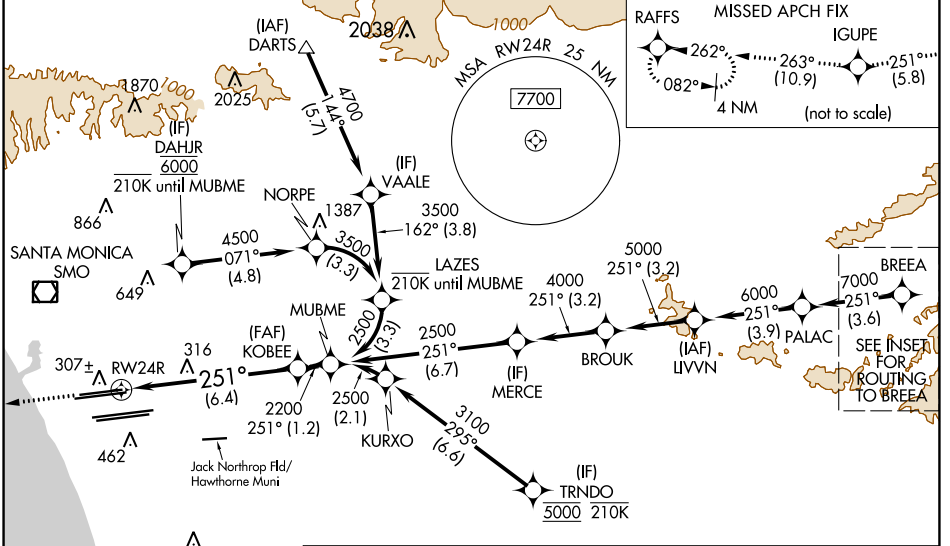
RNAV (RNP) Z RWY 24R

LOS ANGELES INTL (LAX)

APP CRS	Rwy Idg	8926
251°	TDZE	122
	Apt Elev	128

RNP AR APCH-GPS.	<p>ALSF-2</p>	<p>MISSED APPROACH: Climb to 2000 on track 251° to IGUPE and track 263° to RAFFS and hold.</p>
------------------	---------------	--

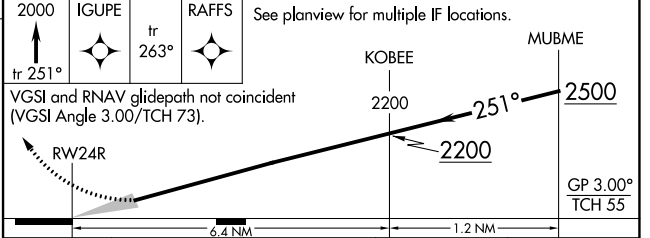
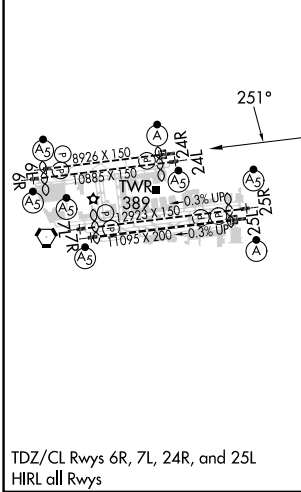
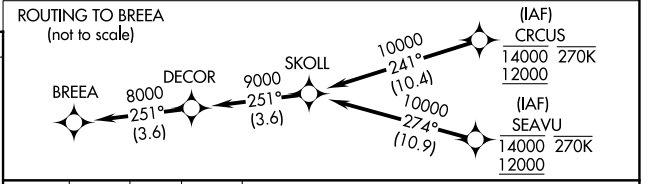
<p>D-ATIS</p> <p>ARR 133.8</p> <p>DEF 135.65</p>	<p>SOCAL APP CON</p> <p>124.3 363.2 (APCH FM WEST)</p> <p>124.5 235.975 (225°-044°)</p>	<p>124.9 269.0 (090°-224°)</p> <p>128.5 360.7 (045°-089°)</p>	<p>LOS ANGELES TOWER</p> <p>N 133.9 239.3</p> <p>S 120.95 379.1</p>	<p>GND CON</p> <p>N 121.65 327.0</p> <p>S 121.75 327.0</p> <p>W 121.4 327.0</p>	<p>CLNC DEL</p> <p>120.35</p> <p>327.0</p>	<p>CPDLC</p>
--	---	---	---	--	--	--------------



SW-3, 22 FEB 2024 to 21 MAR 2024

SW-3, 22 FEB 2024 to 21 MAR 2024

ELEV 128	D	TDZE 122
----------	----------	----------



CATEGORY	A	B	C	D
RNP 0.15 DA		484/40	362 (400-¾)	
RNP 0.30 DA		586/60	464 (500-1½)	

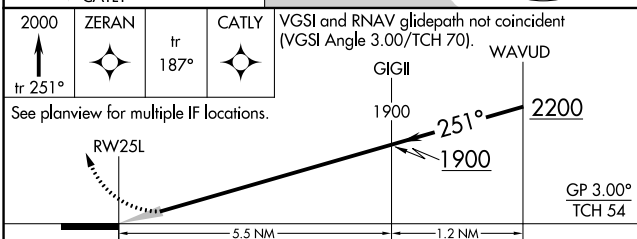
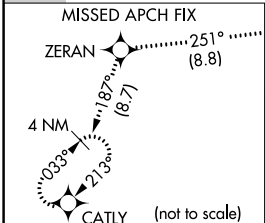
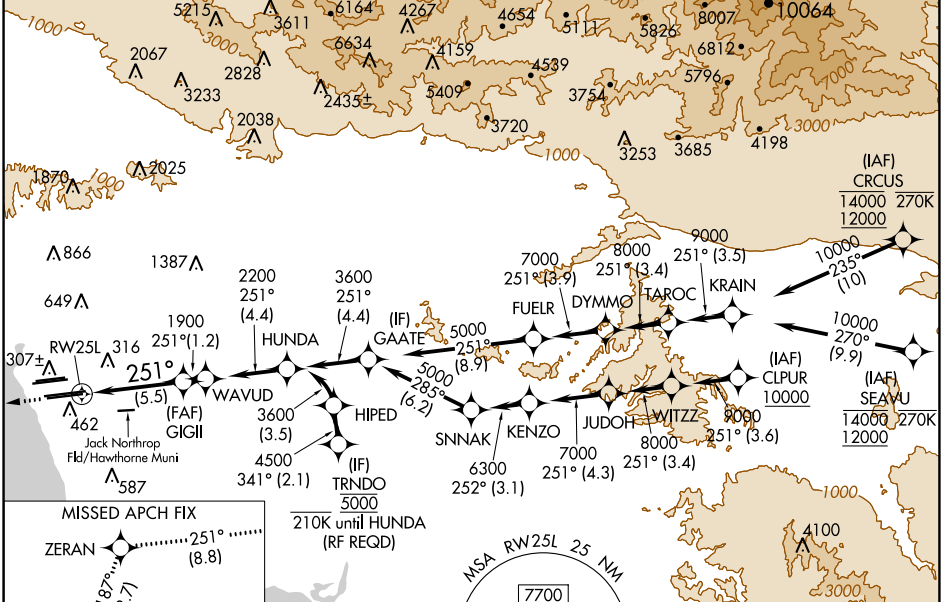
TDZ/CL Rwys 6, 7L, 24R, and 25L
HIRL all Rwys

APP CRS	Rwy Idg	11095
251°	TDZE	104
	Apf Elev	128

RNAV (RNP) Z RWY 25L

LOS ANGELES INTL (LAX)

RNP AR APCH.		ALSF-2		MISSED APPROACH: Climb to 2000 on track 251° to ZERAN and on track 187° to CATLY and hold.	
<p>GPS required. For uncompensated Baro-VNAV systems, procedure NA below 5°C or above 54°C. Simultaneous approach authorized. Simultaneous approach authorized with HHR.</p>		<p>LOS ANGELES TOWER</p> <p>N 133.9 239.3</p> <p>S 120.95 379.1</p>		<p>GND CON</p> <p>N 121.65 327.0</p> <p>S 121.75 327.0</p> <p>W 121.4 327.0</p>	
<p>D-ATIS</p> <p>ARR 133.8</p> <p>DEP 135.65</p>		<p>SOCAL APP CON</p> <p>124.3 363.2</p> <p>124.9 269.0</p> <p>124.5 235.975</p> <p>128.5 360.7</p>		<p>CLNC DEL</p> <p>120.35</p> <p>327.0</p>	



CATEGORY	A	B	C	D
RNP 0.15 DA		445/30	341 (400- $\frac{5}{8}$)	
RNP 0.30 DA		543/50	439 (500-1)	

AUTHORIZATION REQUIRED

ELEV 128 **D** TDZE 104

TDZ/CL Rwws 6R, 7L, 24R, and 25L
HIRL all Rwws

SW-3, 22 FEB 2024 to 21 MAR 2024

SW-3, 22 FEB 2024 to 21 MAR 2024


APP CRS	Rwy Idg	11134
251°	TDZE	104
	Apt Elev	128

RNAV (RNP) Z RWY 25R

LOS ANGELES INTL (LAX)

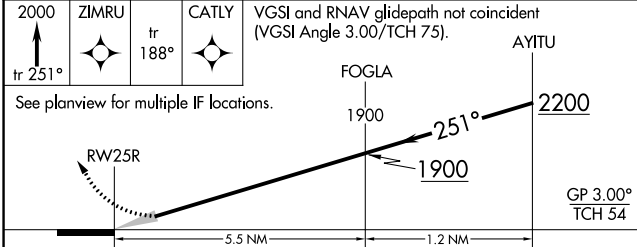
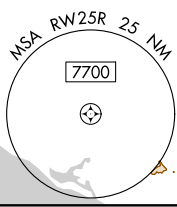
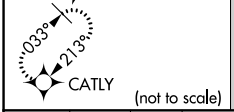
For uncompensated Baro-VNAV systems, procedure NA below 5°C (41°F) or above 54°C (130°F). Simultaneous approach authorized. Simultaneous approach authorized with HHR. GPS required. For inop ALS, increase RNP 0.11 all Cats visibility to RVR 6000.

MALSR



MISSED APPROACH: Climb to 2000 on track 251° to ZIMRU and track 188° to CATLY and hold.

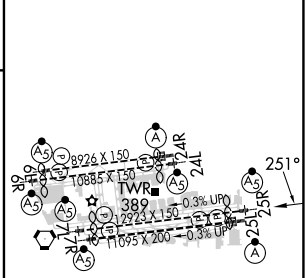
D-ATIS	SOCAL APP CON		LOS ANGELES TOWER		GND CON		CLNC DEL	CPDLC
ARR 133.8	124.3 363.2	124.9 269.0	N 133.9 239.3	S 120.95 379.1	N 121.65 327.0	S 121.75 327.0	120.35 327.0	
DEF 135.65	124.5 235.975	128.5 360.7			W 121.4 327.0			
	(225°-044°)	(090°-224°)						
		(045°-089°)						



CATEGORY	A	B	C	D
RNP 0.11 DA		453/40	349 (400-¾)	
RNP 0.30 DA		544/50	440 (500-1)	

AUTHORIZATION REQUIRED

ELEV 128	D TDZE 104
----------	-------------------



TDZ/CL Rwy's 6R, 7L, 24R, and 25L
HIRL all Rwy's

SW-3, 22 FEB 2024 to 21 MAR 2024


SW-3, 22 FEB 2024 to 21 MAR 2024

APP CRS	Rwy Idg	8566
071°	TDZE	119
	Apt Elev	128

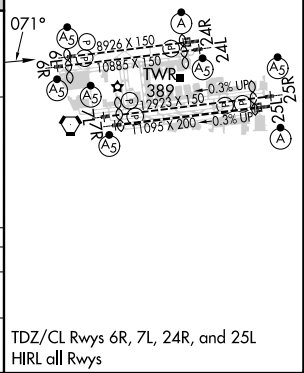
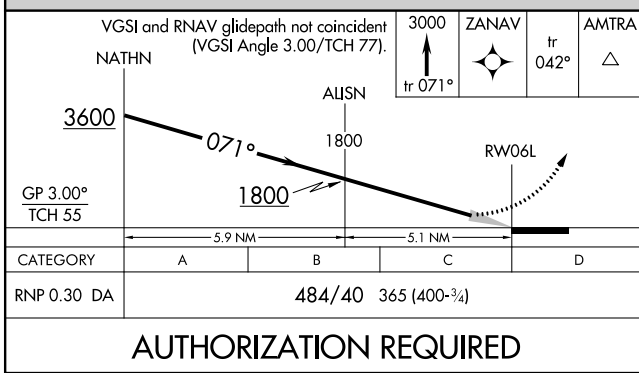
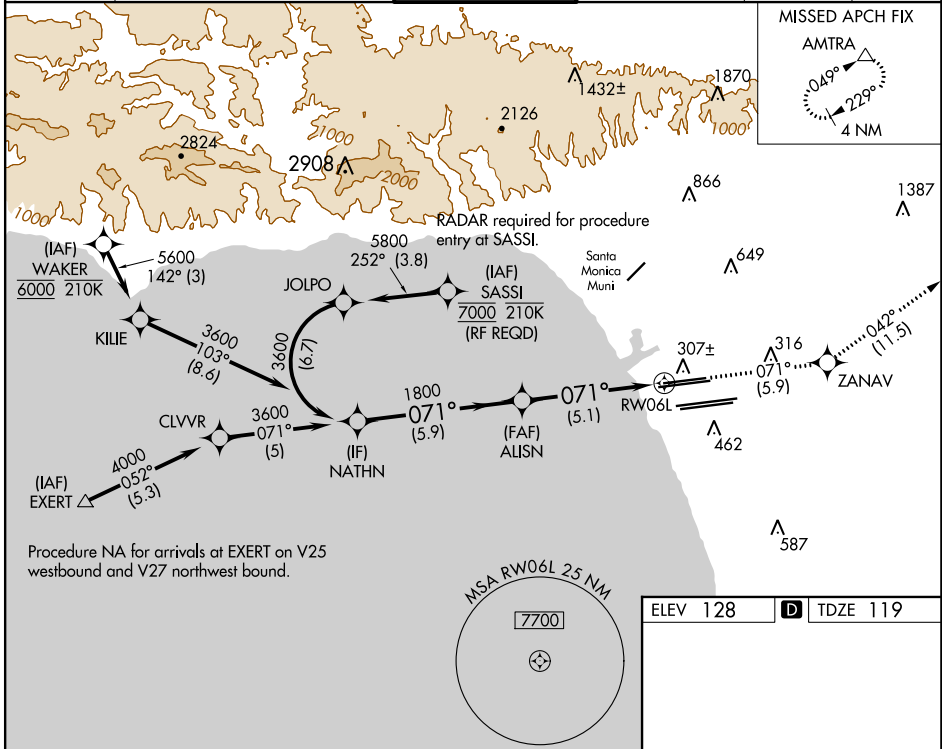
RNAV (RNP) Z RWY 6L

LOS ANGELES INTL (LAX)

▽ For uncompensated Baro-VNAV systems, procedure NA below 5°C (41°F) or above 54°C (130°F). Simultaneous approach authorized. GPS required. For inop MALSR, increase RNP 0.30 all Cats visibility to RVR 6000.

MALSR

MISSED APPROACH: Climb to 3000 on track 071° to ZANAV and on track 042° to AMTRA and hold.

D-ATIS	SOCAL APP CON	LOS ANGELES TOWER	GND CON	CLNC DEL	CPDLC
ARR 133.8	124.3 363.2 (APCH FM WEST)	124.9 269.0 (090°-224°)	N 121.65 327.0 S 121.75 327.0 W 121.4 327.0	120.35 327.0	
DEF 135.65	124.5 235.975 (225°-044°)	128.5 360.7 (045°-089°)			



AUTHORIZATION REQUIRED

TDZ/CL Rwy's 6R, 7L, 24R, and 25L
 HIRL all Rwy's

SW-3, 22 FEB 2024 to 21 MAR 2024

SW-3, 22 FEB 2024 to 21 MAR 2024

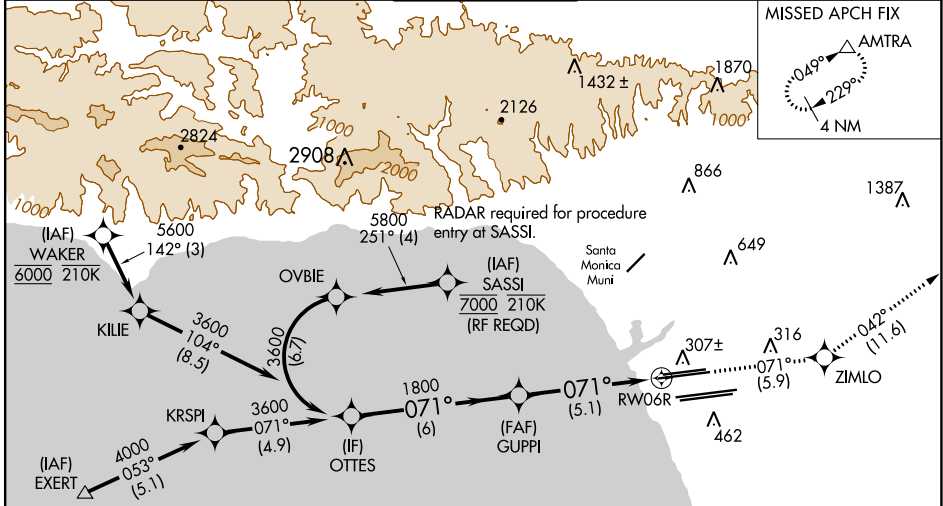
APP CRS	Rwy Idg	9748
071°	TDZE	116
	Apt Elev	128

RNAV (RNP) Z RWY 6R

LOS ANGELES INTL (LAX)

<p>▼ For uncompensated Baro-VNAV systems, procedure NA below 5°C (41°F) or above 54°C (130°F). GPS required. Simultaneous approach authorized. For inop ALS, increase RNP 0.30 all Cats visibility to RVR 6000.</p>	<p>MALSR</p>	<p>MISSED APPROACH: Climb to 3000 on track 071° to ZIMLO and on track 042° to AMTRA and hold.</p>

D-ATIS	SOCL APP CON	LOS ANGELES TOWER	GND CON	CLNC DEL	CPDLC
ARR 133.8	124.3 363.2 (APCH FM WEST)	124.9 269.0 (090°-224°)	N 121.65 327.0	120.35	
DEP 135.65	124.5 235.975 (225°-044°)	128.5 360.7 (045°-089°)	S 121.75 327.0	327.0	
		N 133.9 239.3	W 121.4 327.0		
		S 120.95 379.1			



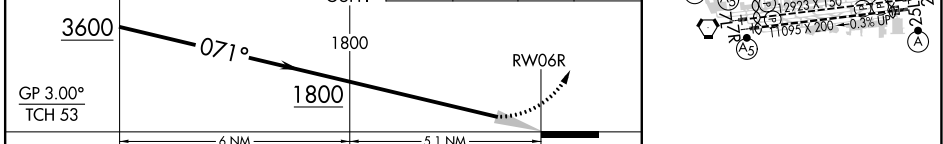
Procedure NA for arrivals at EXERT on V25 westbound and V27 northwest bound.

MSA R W06R 2.5 NM

ELEV 128 TDZE 116



OTTES	GUPT	ZIMLO	AMTRA
3000	tr 071°	tr 042°	△



CATEGORY	A	B	C	D
RNP 0.30 DA	471/40 355 (400-¾)			
AUTHORIZATION REQUIRED				
<p>TDZ/CL Rwy 6R, 7L, 24R, and 25L</p> <p>HIRL all Rwy's</p>				

SW-3, 22 FEB 2024 to 21 MAR 2024

SW-3, 22 FEB 2024 to 21 MAR 2024

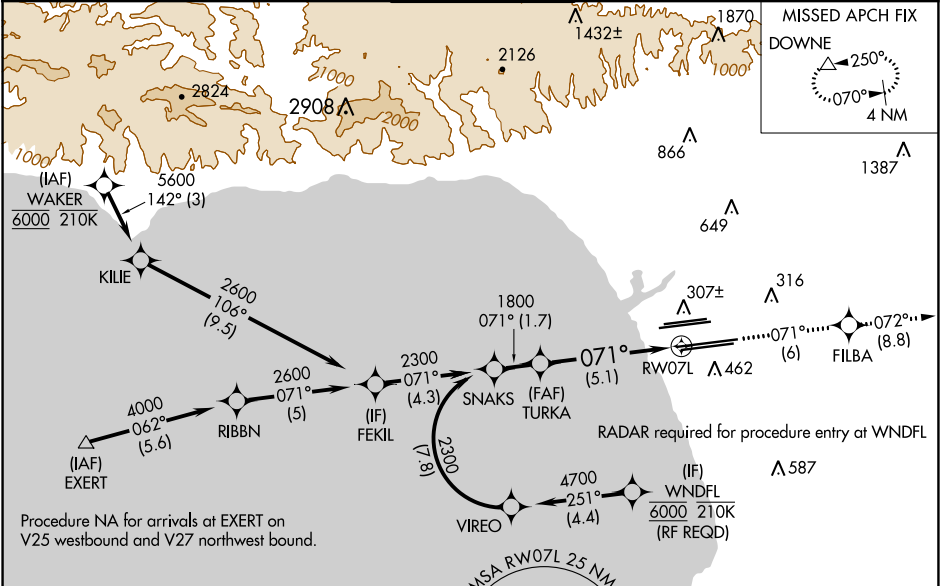
APP CRS	Rwy Idg	11259
071°	TDZE	128
	Apt Elev	128

RNAV (RNP) Z RWY 7L

LOS ANGELES INTL (LAX)

<p>▽ For uncompensated Baro-VNAV systems, procedure NA below 5°C (41°F) or above 54°C (130°F). GPS required. Simultaneous approach authorized. For inop ALS, increase RNP 0.11 all Cats visibility to RVR 5000 and RNP 0.30 all Cats visibility to RVR 6000.</p>		<p>MISSED APPROACH: Climb to 3000 on track 071° to FILBA and on track 072° to DOWNE and hold.</p>

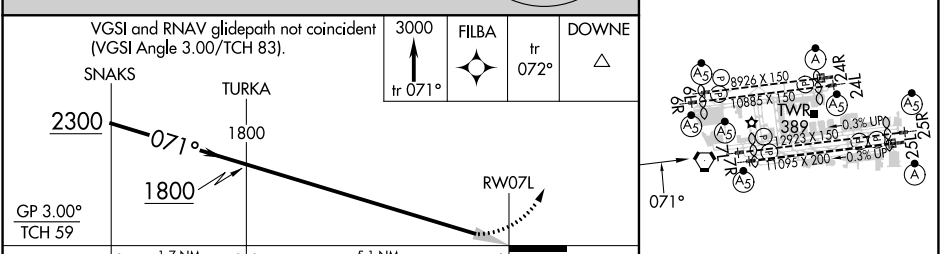
D-ATIS	SOCAL APP CON	LOS ANGELES TOWER	GND CON	CLNC DEL	CPDLC
ARR 133.8	124.3 363.2 (APCH FM WEST)	N 133.9 239.3	N 121.65 327.0	120.35	
DEP 135.65	124.5 235.975 (225°-044°)	S 120.95 379.1	S 121.75 327.0	327.0	
			W 121.4 327.0		



Procedure NA for arrivals at EXERT on V25 westbound and V27 northwest bound.

ELEV 128	D TDZE 128
----------	-------------------

MSA RW07L 25 NM



CATEGORY	A	B	C	D
RNP 0.11 DA		441/24	313 (400-½)	
RNP 0.30 DA		485/40	357 (400-¾)	

AUTHORIZATION REQUIRED

TDZ/CL Rwy 6R, 7L, 24R, and 25L
HIRL all Rwys

SW-3, 22 FEB 2024 to 21 MAR 2024

SW-3, 22 FEB 2024 to 21 MAR 2024

APP CRS 071°	Rwy Idg 11095 TDZE 128 Apt Elev 128
------------------------	--

RNAV (RNP) Z RWY 7R

LOS ANGELES INTL (LAX)

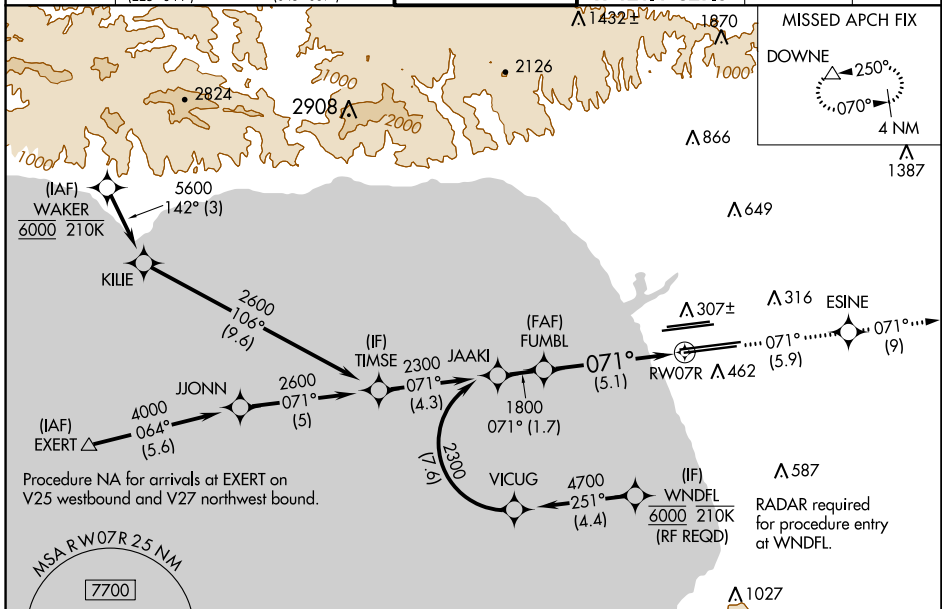
▽ For uncomputerized Baro-VNAV systems, procedure NA below 5°C (41°F) or above 54°C (130°F). For inop MALSR, increase RNP 0.11 all Cats visibility to RVR 4500. Simultaneous approach authorized.

MALSR



MISSED APPROACH: Climb to 3000 on track 071° to ESINE and on track 071° to DOWNE and hold.

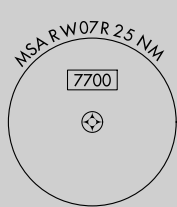
D-ATIS ARR 133.8 DEP 135.65	SOCAL APP CON 124.3 363.2 124.9 269.0 (APCH FM WEST) (090°-224°) 124.5 235.975 128.5 360.7 (225°-044°) (045°-089°)	LOS ANGELES TOWER N 133.9 239.3 S 120.95 379.1	GND CON N 121.65 327.0 S 121.75 327.0 W 121.4 327.0	CLNC DEL 120.35 327.0	CPDLC
---	--	--	---	---	-------



SW-3, 22 FEB 2024 to 21 MAR 2024

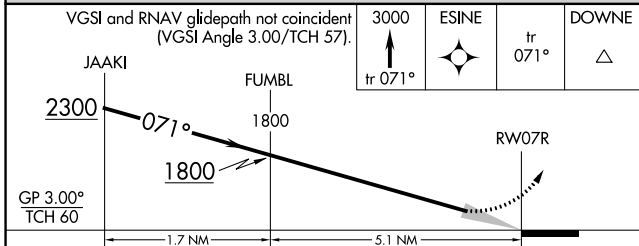
SW-3, 22 FEB 2024 to 21 MAR 2024

Procedure NA for arrivals at EXERT on V25 westbound and V27 northwest bound.



GPS REQUIRED

ELEV 128	D TDZE 128
----------	-------------------



CATEGORY	A	B	C	D
RNP 0.11 DA		414/24	286 (300-½)	
RNP 0.30 DA		538/45	410 (500-¾)	


AUTHORIZATION REQUIRED

TDZ/CL Rws 6R, 7L, 24R, and 25L
HIRL all Rws

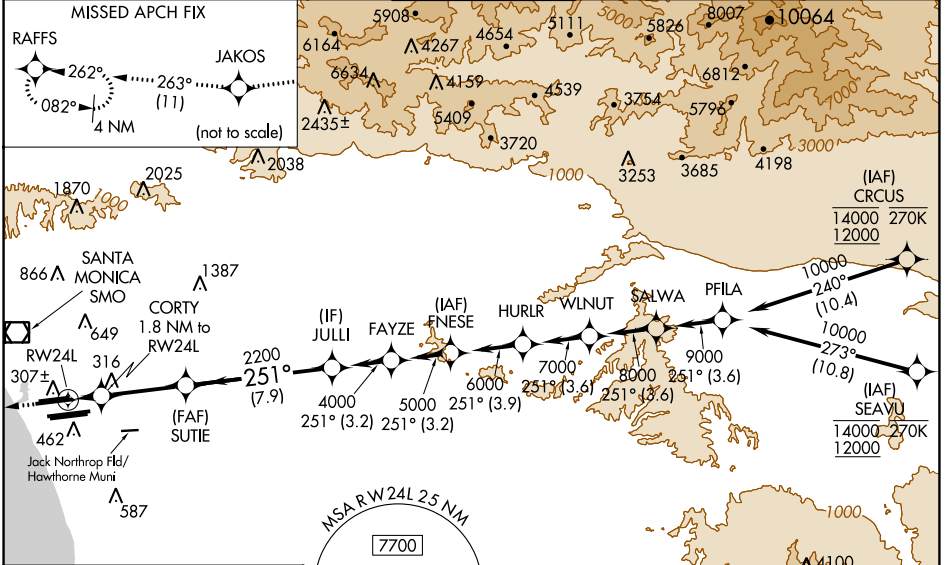
WAAS CH 56407 W24B	APP CRS 251°	Rwy Idg TDZE Apt Elev	9483 123 128
--	------------------------	-----------------------------	---

RNAV (GPS) Y RWY 24L

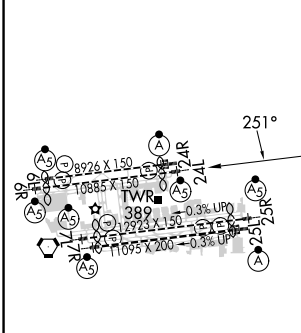
LOS ANGELES INTL (LAX)

RNP APCH.	<p>▼ Simultaneous approach authorized. LNAV procedure NA during simultaneous operations. Use of FD or AP providing RNAV track guidance required during simultaneous operations. Simultaneous approach authorized with HHR. For uncompensated Baro-VNAV systems, LNAV/VNAV NA below 5°C or above 54°C. For inop ALS, increase LNAV/VNAV all Cats visibility to 1½ SM. #RVR 1800 authorized with use of FD or AP or HUD to DA.</p>	MALSR		MISSED APPROACH: Climb to 2000 direct JAKOS and on track 263° to RAFFS and hold.
-----------	--	-------	---	---

D-ATIS ARR 133.8 DEP 135.65	SOCAL APP CON 124.3 363.2 (APCH FM WEST) 124.9 269.0 (090°-224°) 128.5 360.7 (045°-089°)	LOS ANGELES TOWER N 133.9 239.3 S 120.95 379.1	GND CON N 121.65 327.0 S 121.75 327.0 W 121.4 327.0	CLNC DEL 120.35 327.0	CPDLC
---	---	--	---	---	-------



ELEV 128	D	TDZE 123
----------	----------	----------



2000	JAKOS	tr 263°	RAFFS	VGSI and RNAV glidepath not coincident (VGSI Angle 3.00/TCH 79).
*LNAV only				JULLI 4000
CORTY 1.8 NM to RWY 24L				SUTIE 2200
RWY 24L 740*				2200
1.8 NM				4.6 NM
				7.9 NM
				GP 3.00° TCH 59

CATEGORY	A	B	C	D
LPV DA#		323/24	200 (200-½)	
LNAV/VNAV DA		608/50	485 (500-1)	
LNAV MDA	660/24	537 (600-½)	660/55	537 (600-1)

SW-3, 22 FEB 2024 to 21 MAR 2024

SW-3, 22 FEB 2024 to 21 MAR 2024

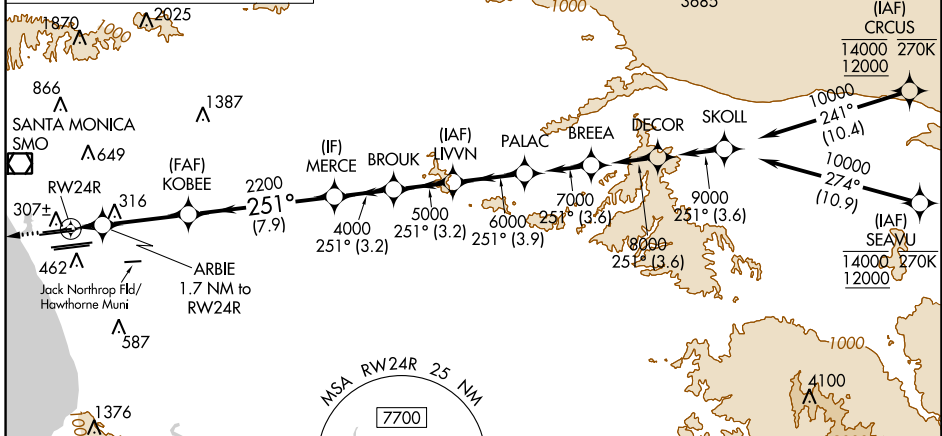
WAAS CH 69307 W24A	APP CRS 251°	Rwy Idg TDZE Apt Elev	8926 122 128
--	------------------------	-----------------------------	---

RNAV (GPS) Y RWY 24R

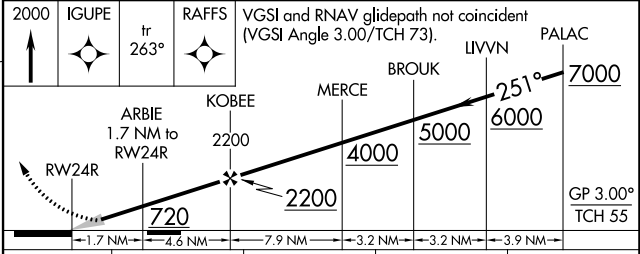
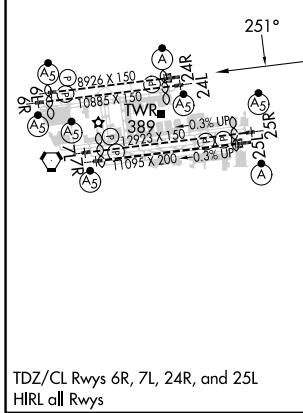
LOS ANGELES INTL (LAX)

RNP APCH.	<p>▼ LNAV procedure NA during simultaneous operations. Use of FD or AP required during simultaneous operations. Simultaneous approach authorized with HHR. For uncompensated Baro-VNAV systems, LNAV/VNAV NA below 6°C or above 54°C. Simultaneous approach authorized. For inop ALS, increase LNAV/VNAV all Cats visibility to 1½ SM, and LNAV Cat C/D visibility to 1¾ SM.</p>	<p>ALS-F-2</p>	<p>MISSED APPROACH: Climb to 2000 direct IGUPE and track 263° to RAFFS and hold.</p>
-----------	--	----------------	--

D-ATIS ARR 133.8 DEP 135.65	SOCAL APP CON 124.3 363.2 [APCH FM WEST] 124.5 235.975 [225°-044°]	124.9 269.0 [090°-224°] 128.5 360.7 [045°-089°]	LOS ANGELES TOWER N 133.9 239.3 S 120.95 379.1	GND CON N 121.65 327.0 S 121.75 327.0 W 121.4 327.0	CLNC DEL 120.35 327.0	CPDLC
---	--	--	--	---	---	-------



ELEV 128	D	TDZE 122
-----------------	----------	-----------------



CATEGORY	A	B	C	D
LPV	DA	322/18	200 (200-½)	
LNAV/VNAV	DA	589/60	467 (500-1¼)	
LNAV MDA	640/24	518 (600-½)	640/55	518 (600-1)

SW-3, 22 FEB 2024 to 21 MAR 2024

SW-3, 22 FEB 2024 to 21 MAR 2024

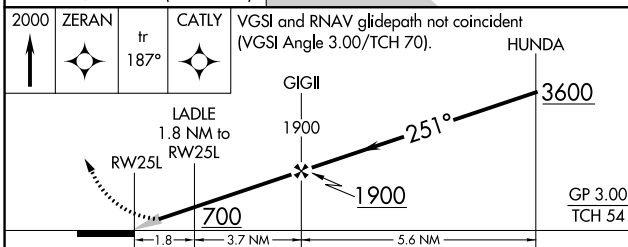
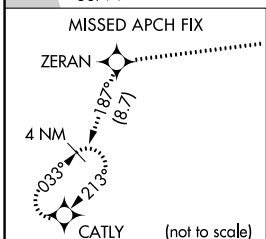
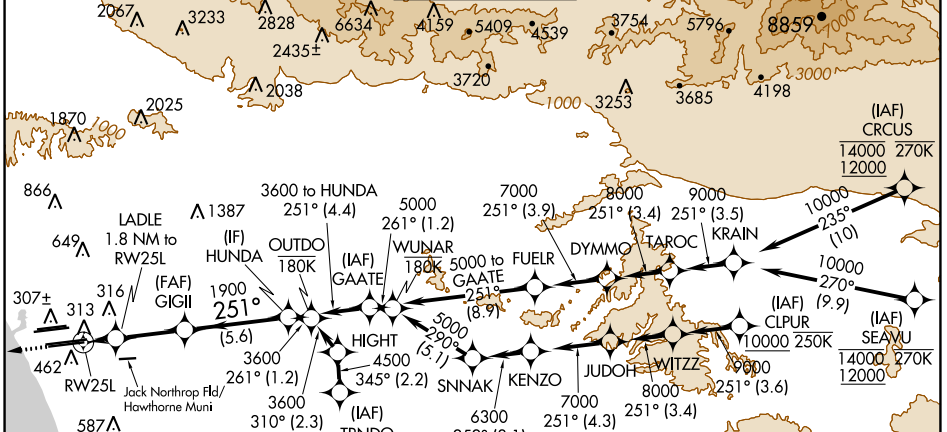
WAAS CH 53507 W25A	APP CRS 251°	Rwy Idg 11095 TDZE 104 Apt Elev 128
--	------------------------	--

RNAV (GPS) Y RWY 25L

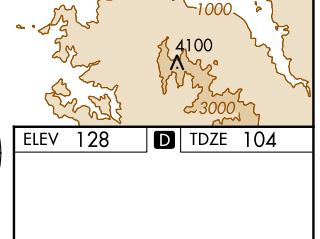
LOS ANGELES INTL (LAX)

RNP APCH - GPS.	ALSF-2	MISSED APPROACH: Climb to 2000 direct ZERAN and on track 187° to CATLY and hold.
<p>▼ For uncompensated Baro-VNAV systems, LNAV/VNAV NA below 5°C or above 54°C. Simultaneous approach authorized. Simultaneous approach authorized with HHR 25. For inop ALS, increase LNAV/VNAV all Cats visibility to RVR 5500, LNAV Cat C/D visibility to 1½ SM. LNAV procedure NA during simultaneous operations. Use of FD or AP required during simultaneous operations.</p>		

D-ATIS ARR 133.8 DEP 135.65	SOCAL APP CON 124.3 363.2 [APCH FM WEST] 124.5 235.975 [225°-044°]	124.9 269.0 (090°-224°) 128.5 360.7 (045°-089°)	LOS ANGELES TOWER N 133.9 239.3 S 120.95 379.1	GND CON N 121.65 327.0 S 121.75 327.0 W 121.4 327.0	CLNC DEL 120.35 327.0	CPDLC
---	--	--	--	---	---	-------



CATEGORY	A	B	C	D
LPV DA		304/18	200 (200-½)	
LNAV/VNAV DA		479/35	375 (400-¾)	
LNAV MDA	580/24	476 (500-½)	580/50	476 (500-1)



ELEV 128	TDZE 104
<p>TDZ/CL Rwws 6R, 7L, 24R, and 25L HIRL all Rwws</p>	

SW-3, 22 FEB 2024 to 21 MAR 2024

SW-3, 22 FEB 2024 to 21 MAR 2024

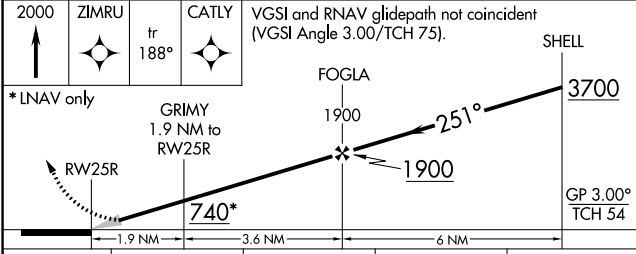
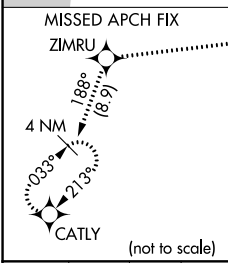
WAAS CH 49007 W25B	APP CRS 251°	Rwy Idg 11134 TDZE 104 Apt Elev 128
--	------------------------	--

RNAV (GPS) Y RWY 25R

LOS ANGELES INTL (LAX)

RNP APCH.	MALSR	MISSED APPROACH: Climb to 2000 direct ZIMRU and track 188° to CATLY and hold.
<p>▼ For uncompensated Baro-VNAV systems, LNAV/VNAV NA below 5°C or above 54°C. Simultaneous approach authorized. Simultaneous approach authorized with HHR. LNAV procedure NA during simultaneous operations. Use of FD or AP required during simultaneous operations. # RVR 1800 authorized with use of FD or AP or HUD to DA.</p>		

D-ATIS ARR 133.8 DEP 135.65	SOCAL APP CON 124.3 363.2 (APCH FM WEST) 124.5 235.975 (225°-044°)	124.9 269.0 (090°-224°) 128.5 360.7 (045°-089°)	LOS ANGELES TOWER N 133.9 239.3 S 120.95 379.1	GND CON N 121.65 327.0 S 121.75 327.0 W 121.4 327.0	CLNC DEL 120.35 327.0	CPDLC
---	--	--	--	---	---	-------



CATEGORY	A	B	C	D
LPV DA#		304/24	200 (200-½)	
LNAV/VNAV DA		578/60	474 (500-1¼)	
LNAV MDA	640/24	536 (600-½)	640/55	536 (600-1)

ELEV 128 **D** TDZE 104

SW-3, 22 FEB 2024 to 21 MAR 2024

SW-3, 22 FEB 2024 to 21 MAR 2024

WAAS CH 82507 W06A	APP CRS 071°	Rwy Idg 8566 TDZE 119 Apt Elev 128
---------------------------------	------------------------	---

RNAV (GPS) Y RWY 6L

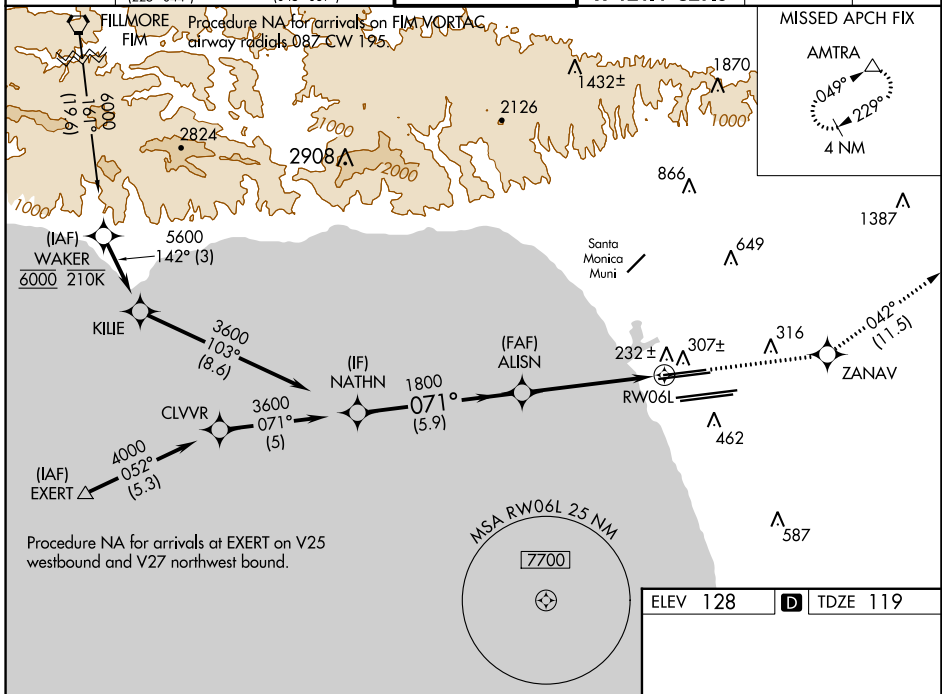
LOS ANGELES INTL (LAX)

▼ For uncompensated Baro-VNAV systems, LNAV/VNAV NA below 5°C (41°F) or above 54°C (130°F). DME/DME RNP-0.3 NA. LNAV procedure NA during simultaneous operations. Use of FD or AP providing RNAV track guidance required during simultaneous operations. Simultaneous approach authorized.

MALSR
AS

MISSED APPROACH: Climb to 3000 direct ZANAV and track 042° to AMTRA and hold.

D-ATIS ARR 133.8 DEP 135.65	SOCL APP CON 124.3 363.2 (APCH FM WEST) 124.5 235.975 (223°-044°)	124.9 269.0 (090°-224°) 128.5 360.7 (043°-089°)	LOS ANGELES TOWER N 133.9 239.3 S 120.95 379.1	GND CON N 121.65 327.0 S 121.75 327.0 W 121.4 327.0	CLNC DEL 120.35 327.0	CPDLC
---	---	--	--	---	---	-------



SW-3, 22 FEB 2024 to 21 MAR 2024

SW-3, 22 FEB 2024 to 21 MAR 2024

ELEV 128		D TDZE 119	
VGSi and RNAV glidepath not coincident (VGSi Angle 3.00/TCH 77). GP 3.00° TCH 55 NATHN 3600 071° 1800 ALISN 1800 071° * 1 NM to RWY 06L * INAV only AMTRA 3000 042° ZANAV 307± 042° (11.5) RWY 06L 462			
CATEGORY	A	B	C
LPV DA		369/24	250 (300-½)
LNAV/VNAV DA		411/24	292 (300-½)
LNAV MDA	500/24	381 (400-½)	500/35 381 (400-¾)
TDZ/CL Rwy 6R, 7L, 24R, and 25L HIRL all Rwy's			

WAAS CH 61207 W06B	APP CRS 071°	Rwy Idg 9748 TDZE 116 Apt Elev 128
--	------------------------	---

RNAV (GPS) Y RWY 6R

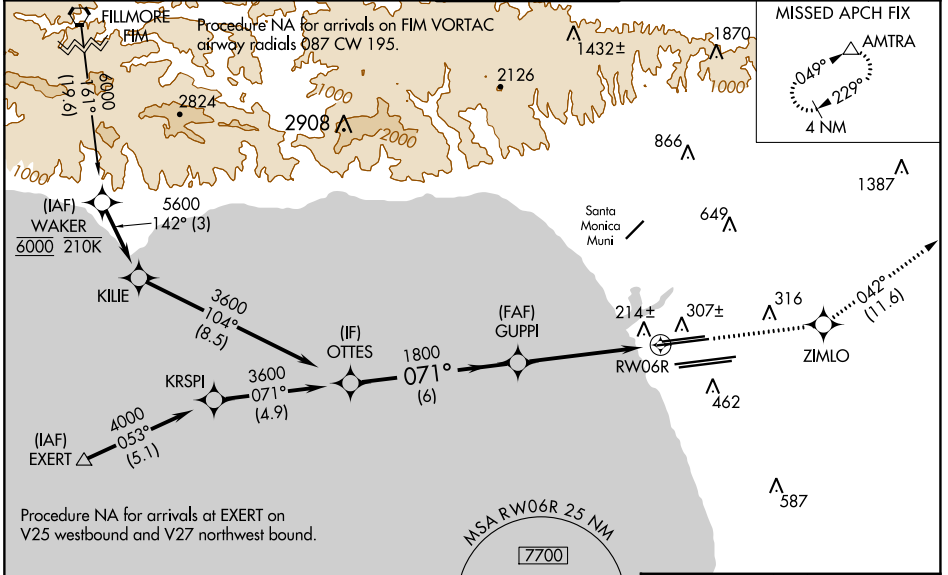
LOS ANGELES INTL (LAX)

▼ For uncompensated Baro-VNAV systems, LNAV/VNAV NA below 5°C (41°F) or above 54°C (130°F). DME/DME RNP-0.3 NA. For inop ALS, increase LNAV/VNAV all Cats visibility to RVR 4500, LNAV Cat C and D visibility to RVR 5500. Simultaneous approach authorized. LNAV procedure NA during simultaneous operations. Use of FD or AP providing RNAV track guidance required during simultaneous operations. # RVR 1800 authorized with use of FD or AP or HUD to DA.



MISSED APPROACH:
Climb to 3000 direct ZIMLO and track 042° to AMTRA and hold.

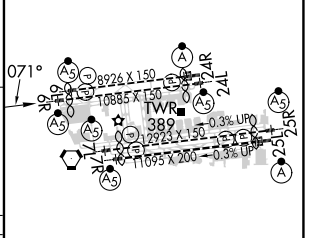
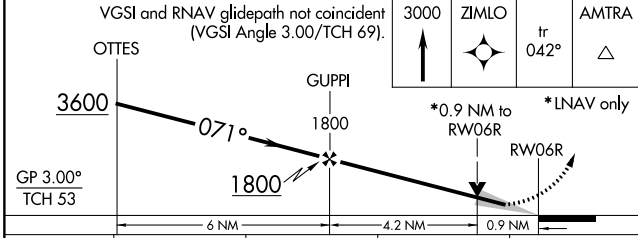
D-ATIS ARR 133.8 DEP 135.65	SOCAL APP CON 124.3 363.2 (APCH FM WEST) (225°-044°)	124.9 269.0 (090°-224°) (045°-089°)	LOS ANGELES TOWER N 133.9 239.3 S 120.95 379.1	GND CON N 121.65 327.0 S 121.75 327.0 W 121.4 327.0	CLNC DEL 120.35 327.0	CPDLC
---	--	--	--	---	---------------------------------	-------



SW-3, 22 FEB 2024 to 21 MAR 2024

SW-3, 22 FEB 2024 to 21 MAR 2024

ELEV 128	D TDZE 116
----------	-------------------



CATEGORY	A	B	C	D
LPV DA#		316/24	200 (200-½)	
LNAV/VNAV DA		398/24	282 (300-½)	
LNAV MDA	480/24	364 (400-½)	480/35	364 (400-¾)

TDZ/CL Rwy 6R, 7L, 24R, and 25L
HIRL all Rwy's

WAAS CH 42504 W07A	APP CRS 071°	Rwy Idg 11259 TDZE 128 Apt Elev 128
--	------------------------	--

RNAV (GPS) Y RWY 7L

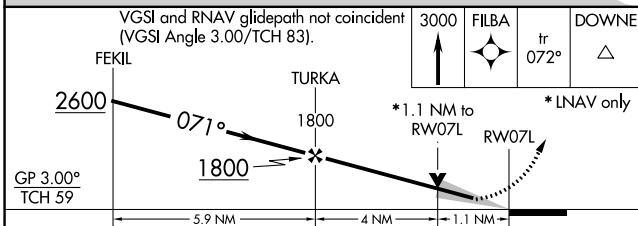
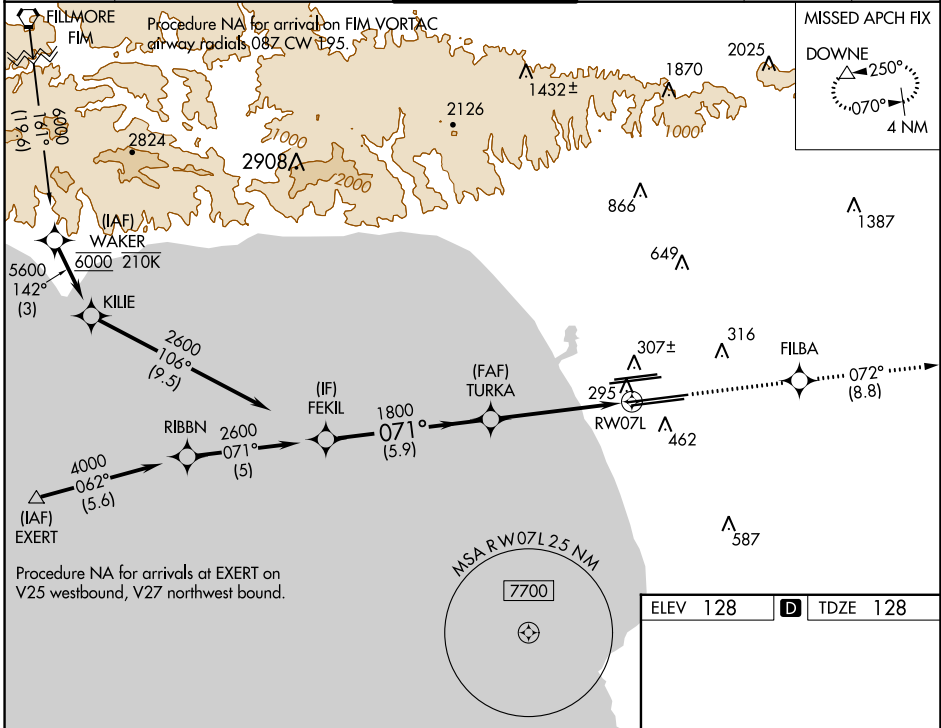
LOS ANGELES INTL (LAX)

▼ For uncompensated Baro-VNAV systems, LNAV/VNAV NA below 5°C (41°F) or above 54°C (130°F). DME/DME RNP -0.3 NA. LNAV procedure NA during simultaneous operations. Use of FD or AP providing RNAV track guidance required during simultaneous operations. Simultaneous approach authorized.

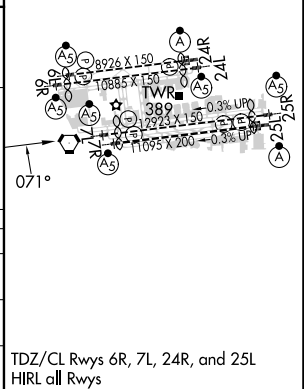


MISSED APPROACH: Climb to 3000 direct FILBA and on track 072° to DOWNE and hold.

D-ATIS ARR 133.8 DEP 135.65	SOCAL APP CON 124.3 363.2 124.9 269.0 (APCH FM WEST) (090°-224°) 124.5 235.975 128.5 360.7 (225°-044°) (045°-089°)	LOS ANGELES TOWER N 133.9 239.3 S 120.95 379.1	GND CON N 121.65 327.0 S 121.75 327.0 W 121.4 327.0	CLNC DEL 120.35 327.0	CPDLC
---	--	--	---	---	-------



ELEV 128	D TDZE 128
----------	-------------------



CATEGORY	A	B	C	D
LPV DA		344/18	216 (300-½)	
LNAV/VNAV DA		464/30	336 (400-¾)	
LNAV MDA	560/24	432 (500-½)	560/40	432 (500-¾)

TDZ/CL Rwy's 6R, 7L, 24R, and 25L
HIRL all Rwy's

SW-3, 22 FEB 2024 to 21 MAR 2024


SW-3, 22 FEB 2024 to 21 MAR 2024

WAAS CH 69603 W07B	APP CRS 071°	Rwy Idg 11095 TDZE 128 Apt Elev 128
--	------------------------	--

RNAV (GPS) Y RWY 7R

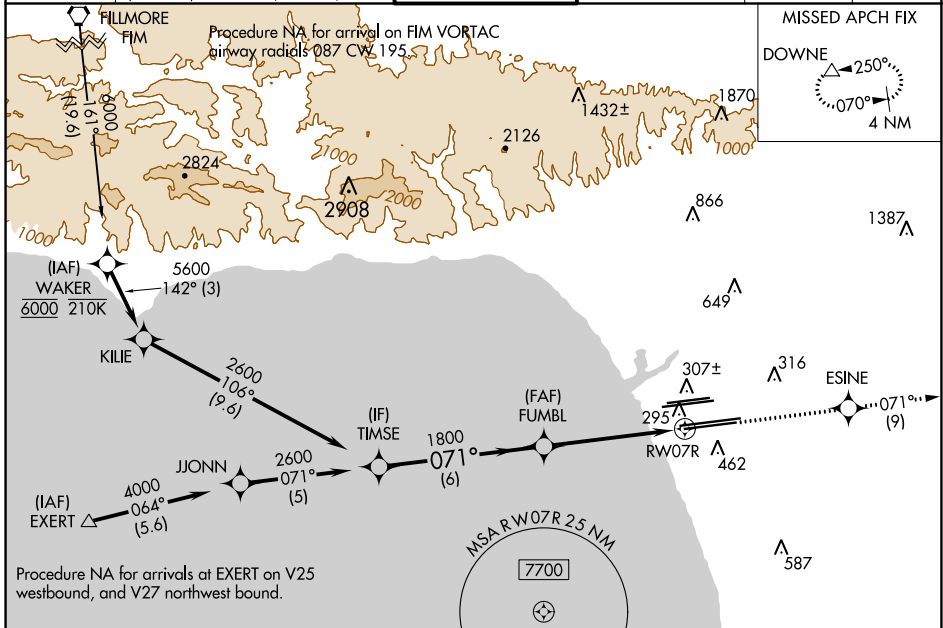
LOS ANGELES INTL (LAX)

▼ For uncompensated Baro-VNAV systems, LNAV/VNAV NA below 5°C (41°F) or above 54°C (130°F). DME/DME RNP-0.3 NA. Simultaneous approach authorized. LNAV procedure NA during simultaneous operations. Use of FD or AP providing RNAV track guidance required during simultaneous operations. # RVR 1800 authorized with use of FD or AP or HUD to DA.

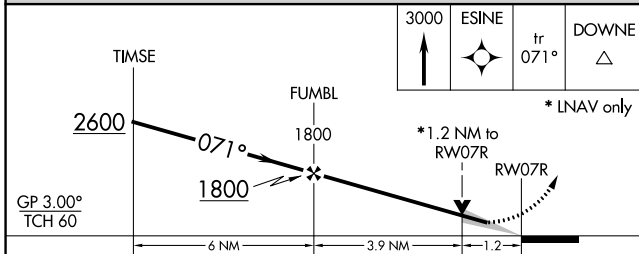
MALSR 

MISSED APPROACH: Climb to 3000 direct ESINE and on track 071° to DOWNE and hold.

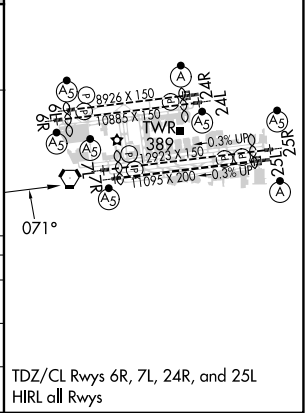
D-ATIS ARR 133.8 DEP 135.65	SOCAL APP CON 124.3 363.2 124.9 269.0 (APCH FM WEST) (090°-224°) 124.5 235.975 128.5 360.7 (225°-044°) (045°-089°)	LOS ANGELES TOWER N 133.9 239.3 S 120.95 379.1	GND CON N 121.65 327.0 S 121.75 327.0 W 121.4 327.0	CLNC DEL 120.35 327.0	CPDLC
---	--	--	---	---	-------



ELEV 128	D TDZE 128
----------	-------------------



CATEGORY	A	B	C	D
LPV DA#		328/24	200 (200-½)	
LNAV/VNAV DA		462/30	334 (400-¾)	
LNAV MDA	560/24	432 (500-½)	560/40	432 (500-¾)



SW-3, 22 FEB 2024 to 21 MAR 2024

SW-3, 22 FEB 2024 to 21 MAR 2024