


LOC/DME I-JYO <b>111.75</b> Chan <b>54</b> (Y)	APP CRS <b>171°</b>	Rwy Idg <b>5500</b> TDZE <b>383</b> Apt Elev <b>389</b>
--	------------------------	--

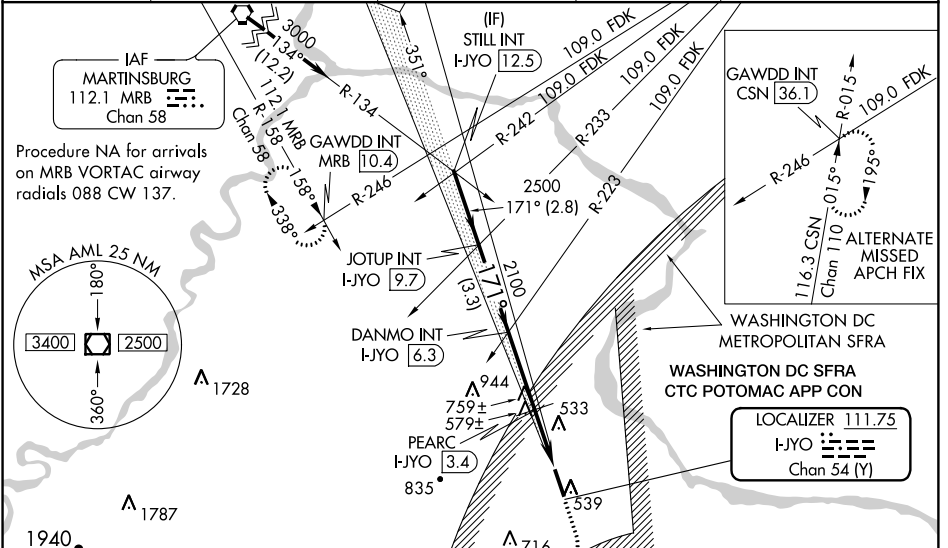
# ILS or LOC RWY 17

LEESBURG EXECUTIVE (JYO)

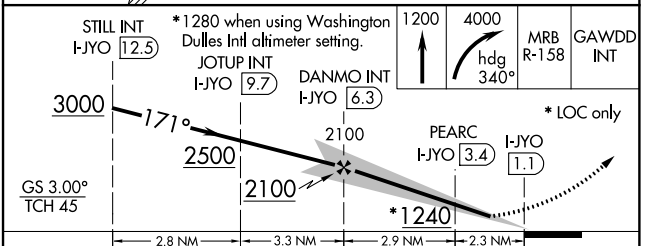
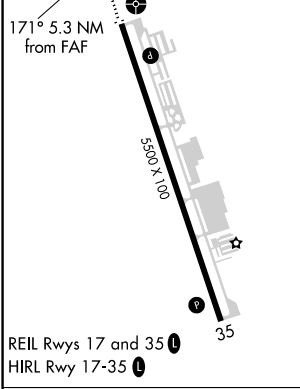
**⚠** When VGSI inop, Straight-in/Circling Rwy 17 procedure NA at night.  
**⚠** Inoperative table does not apply to S-LOC 17 Cats A/C and PEARC Fix minimums S-LOC 17 Cats A/B. For inoperative ODALS, increase PEARC Fix minimums S-LOC 17 Cats C/D visibility to 1½. Visibility reduction by helicopters NA. When local altimeter setting not received, use Washington Dulles Intl altimeter setting; increase all DA 32 feet; increase all MDA 40 feet and PEARC Fix minimums S-LOC 17 Cats C/D visibility ½ mile and Circling Cats C/D and PEARC Fix minimums Circling Cat D visibility ¼ mile; inoperative table does not apply to S-LOC 17 Cat C and PEARC Fix minimums S-LOC 17 Cats A/B/C.

**ODALS**  
  
 MISSED APPROACH: Climb to 1200 then climbing right turn to 4000 on heading 340° and MRB VORTAC R-158 to GAWDD INT/MRB 10.4 DME and hold, continue climb-in hold to 4000.

AWOS-3 <b>125.225</b>	POTOMAC APP CON <b>126.1 338.25</b>	LEESBURG RADIO <b>122.6</b>	CLNC DEL <b>118.55</b>	UNICOM <b>122.975</b> (CTAF) <b>0</b>
--------------------------	--	--------------------------------	---------------------------	--



ELEV <b>389</b>	TDZE <b>383</b>
-----------------	-----------------



CATEGORY	A	B	C	D
S-ILS 17	633-1 250 (300-1)			
S-LOC 17	1240-1	857 (900-1)	1240-2½	857 (900-2½)
CIRCLING	1240-1¼	851 (900-1¼)	1240-2½	851 (900-2¾)
PEARC FIX MINIMUMS				
S-LOC 17	840-1	457 (500-1)	840-1¼	457 (500-1¼)
CIRCLING	840-1	451 (500-1)	860-1½	1040-2
			471 (500-1½)	651 (700-2)

FAF to MAP 5.3 NM					
Knots	60	90	120	150	180
Min:Sec	5:18	3:32	2:39	2:07	1:46

NE-3, 10 OCT 2019 to 07 NOV 2019

NE-3, 10 OCT 2019 to 07 NOV 2019

WAAS CH <b>60902</b> <b>W17A</b>	APP CRS <b>171°</b>	Rwy Idg TDZE Apt Elev	<b>5500</b> <b>383</b> <b>389</b>
--	------------------------	-----------------------------	---

# RNAV (GPS) RWY 17

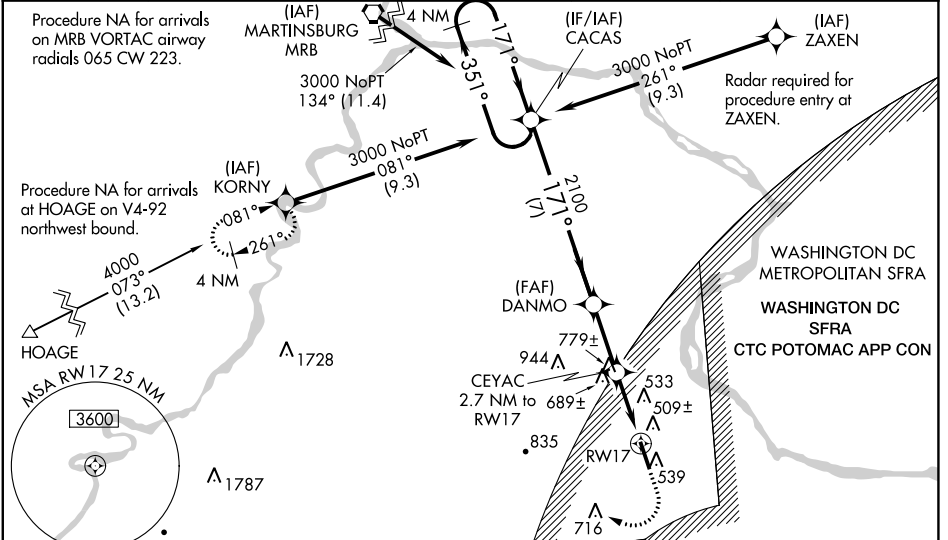
LEESBURG EXECUTIVE (JYO)

When VGSi inop, Straight-in/Circling Rwy 17 procedure NA at night. DME/DME RNP-0.3 NA. Visibility reduction by helicopters NA. For uncompensated Baro-VNAV systems, LNAV/VNAV NA below -15°C (5°F) or above 41°C (105°F). Inoperative table does not apply to LNAV Cats A/B.

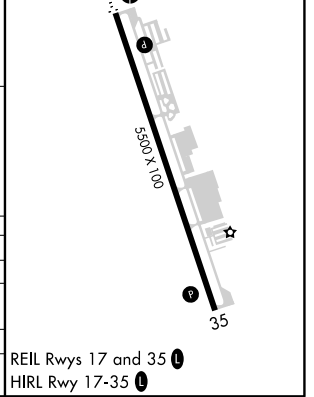
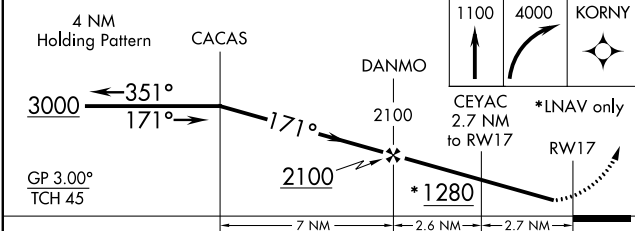
**V** For inoperative ODALS, increase LNAV/VNAV all Cats visibility to 1/8 and LNAV Cats C/D visibility to 1/8. When local altimeter setting not received, use Washington Dulles Intl altimeter setting; increase all DA 32 feet and LNAV/VNAV all Cats visibility 1/8 mile; increase all MDA 40 feet and LNAV Cats C/D and Circling Cat C visibility 1/8 mile and Circling Cat D visibility 1/4 mile. When using Washington Dulles Intl altimeter setting, inoperative table does not apply to LNAV Cats A/B. For inoperative ODALS when using Washington Dulles Intl altimeter setting: increase LNAV/VNAV all Cats visibility to 1/4 and LNAV Cats C/D visibility to 1/4. Baro-VNAV NA when using Washington Dulles Intl altimeter setting.

ODALS	MISSED APPROACH: Climb to 1100 then climbing right turn to 4000 direct KORN Y and hold.
-------	---

AWOS-3 <b>125.225</b>	POTOMAC APP CON <b>126.1 338.25</b>	LEESBURG RADIO <b>122.6</b>	CLNC DEL <b>118.55</b>	UNICOM <b>122.975 (CTAF)</b>
--------------------------	--	--------------------------------	---------------------------	---------------------------------



ELEV <b>389</b>	TDZE <b>383</b>
-----------------	-----------------



CATEGORY	A	B	C	D
LPV DA		633-1	250 (300-1)	
LNAV/VNAV DA		725-1	342 (400-1)	
LNAV MDA	940-1	557 (600-1)	940-1 1/2	557 (600-1 1/2)
CIRCLING	940-1	551 (600-1)	940-1 5/8	1040-2
			551 (600-1 5/8)	651 (700-2)

NE-3, 10 OCT 2019 to 07 NOV 2019

NE-3, 10 OCT 2019 to 07 NOV 2019