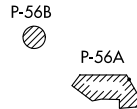


CLTCH TWO DEPARTURE (RNAV)
(CLTCH2,CLTCH) 29MAY18

AWOS-3
125.225
CLNIC DEL
118.55
UNICOM (CTAF)
122.975
POTOMAC DEP CON
125.05 350.2



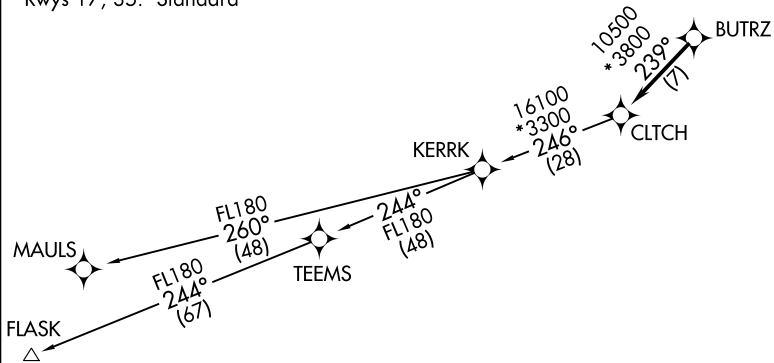
**TOP ALTITUDE:
3000**



NOTE: RNAV 1.
NOTE: RADAR required.
NOTE: DME/DME/IRU or GPS required.
NOTE: Takeoff Rwy 35 requires a climb to 1200 on heading 353° before proceeding on the ATC assigned heading for obstacle avoidance.

TAKEOFF MINIMUMS:
Rwys 17, 35: Standard

NOTE: Chart not to scale.



DEPARTURE ROUTE DESCRIPTION

Climb on heading assigned by ATC, expect RADAR vectors to BUTRZ, then on track 239° to CLTCH, thence. . . .

. . . . on assigned transition, maintain altitude assigned by ATC, expect clearance to filed altitude within ten (10) minutes after departure.

FLASK TRANSITION (CLTCH2.FLASK)
MAULS TRANSITION (CLTCH2.MAULS)

(CLTCH2,CLTCH) 18088
CLTCH TWO DEPARTURE (RNAV)

AL-5288 (FAA)

LEESBURG EXECUTIVE (JTYO)
LEESBURG, VIRGINIA

LEESBURG, VIRGINIA
LEESBURG EXECUTIVE (JTYO)

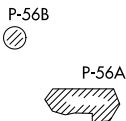
JDUBB TWO DEPARTURE(RNAV)

AWOS-3
125.225
CLNC DEL
118.55
UNICOM (CTAF)
122.975
POTOMAC DEP CON
125.05 350.2

**TOP ALTITUDE:
3000**

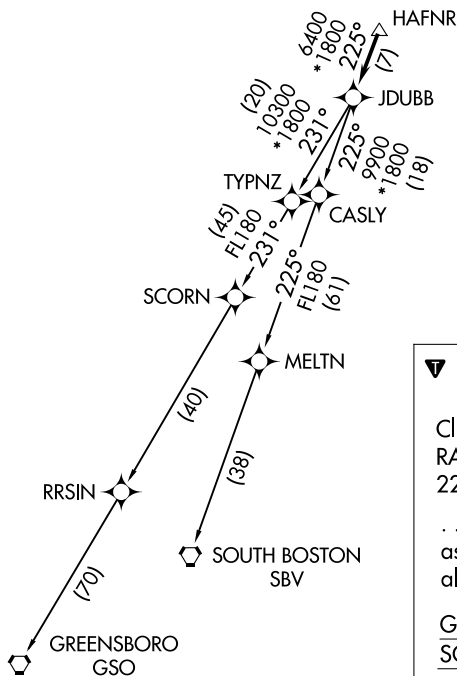
TAKEOFF MINIMUMS:
Rwys 17, 35: Standard

- NOTE: RNAV 1.
- NOTE: RADAR required.
- NOTE: DME/DME/IRU or GPS required.
- NOTE: Takeoff Rwy 35 requires a climb to 1200 on heading 353° before proceeding on the ATC assigned heading for obstacle avoidance.



NE-3, 12 SEP 2019 to 10 OCT 2019

NE-3, 12 SEP 2019 to 10 OCT 2019



NOTE: Chart not to scale.

DEPARTURE ROUTE DESCRIPTION

Climb on heading assigned by ATC, expect RADAR vectors to HAFNR, then on track 225° to JDUBB, thence. . . .

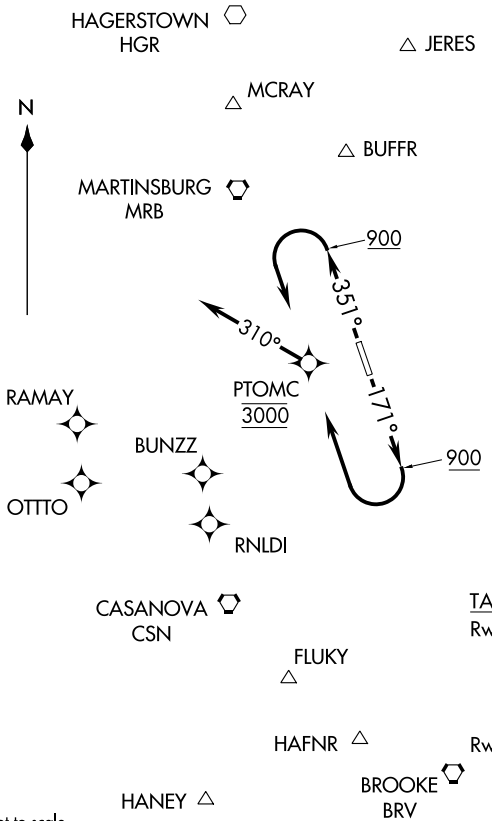
. . . . on assigned transition, maintain altitude assigned by ATC, expect clearance to filed altitude within ten (10) minutes after departure.

GREENSBORO TRANSITION (JDUBB2.GSO)
SOUTH BOSTON TRANSITION (JDUBB2.SBV)

PTOMC TWO DEPARTURE (RNAV)
(PTOMC2.PTOMC) 21JUL16

TOP ALTITUDE:
3000

AWOS-3 125.225
CLNC DEL
118.55
DEP CON
125.05 350.2



DEPARTURE ROUTE DESCRIPTION
TAKEOFF RUNWAY 17: Climb heading 171° to 900, then climbing right turn direct to cross PTOMC at 3000, do not exceed 210K until PTOMC, thence . . .
TAKEOFF RUNWAY 35: Climb heading 351° to 900, then climbing left turn direct to cross PTOMC at 3000, do not exceed 210K until PTOMC, thence . . .
 . . . on heading 310°, maintain 3000, expect radar vectors on course. Expect filed altitude within ten (10) minutes after departure.

NOTE: DME/DME/IRU or GPS required.
NOTE: RNAV 1.
NOTE: Radar required.

TAKEOFF MINIMUMS:
 Rwy 17: Standard with minimum climb of 500' per NM to 900. Then 327' per NM to 3000.
 Rwy 35: Standard with minimum climb of 500' per NM to 900. Then 370' per NM to 3000.

TAKEOFF OBSTACLES:
 Rwy 17: Vehicle on roadway, 320' from DER, 565' left of centerline, up to 15' AGL/414' MSL. Building 167' from DER, 360' left of centerline, 22' AGL/401' MSL. Pole 958' from DER, 373' left of centerline, 32' AGL/421' MSL. Trees beginning 138' from DER, left and right of centerline, up to 100' AGL/464' MSL.
 Rwy 35: Terrain 96' from DER, 453' left of centerline, 381' MSL. Tree 1078' from DER, 525' left of centerline, up to 100' AGL/413' MSL. Pole 638' from DER, 642' right of centerline, 49' AGL/428' MSL.

NOTE: Chart not to scale.

LEESBURG, VIRGINIA
LEESBURG EXECUTIVE (JT/O)

(PTOMC2.PTOMC) 16203
PTOMC TWO DEPARTURE (RNAV)

SI-5288 (FAA)

LEESBURG EXECUTIVE (JT/O)
LEESBURG, VIRGINIA

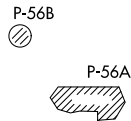
SCRAM FOUR DEPARTURE (RNAV)
(SCRAM4,SCRAM) 29MAR18

AWOS-3
125.225
CLNC DEL
118.55
UNICOM (CTAF)
122.975
POTOMAC DEP CON
125.05 350.2

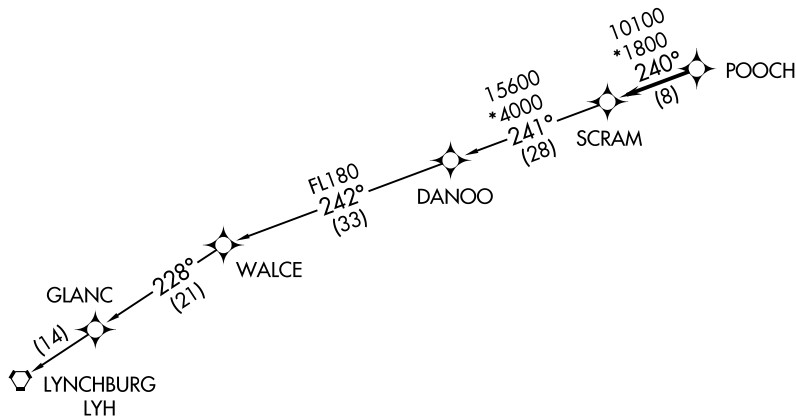
TAKEOFF MINIMUMS:
Rwys 17, 35: Standard

- NOTE: RNAV 1.
- NOTE: RADAR required.
- NOTE: DME/DME/IRU or GPS required.
- NOTE: Takeoff Rwy 35 requires a climb to 1200 on heading 353° before proceeding on the ATC assigned heading for obstacle avoidance.

TOP ALTITUDE:
3000



NOTE: Chart not to scale.



DEPARTURE ROUTE DESCRIPTION

Climb on heading assigned by ATC, expect RADAR vectors to POOCH, then on track 240° to SCRAM, thence . . .

. . . . on LYNCHBURG transition, maintain altitude assigned by ATC, expect clearance to filed altitude within ten (10) minutes after departure.

LYNCHBURG TRANSITION (SCRAM4.LYH):

(SCRAM4,SCRAM) 18088
SCRAM FOUR DEPARTURE (RNAV)

AL-5288 (FAA)

LEESBURG EXECUTIVE (JTYO)
LEESBURG, VIRGINIA

LEESBURG, VIRGINIA
LEESBURG EXECUTIVE (JTYO)