

LOC/DME HXD <b>110.9</b> Chan 46	APP CRS <b>356°</b>	Rwy Idg TDZE Apt Elev	<b>7339</b> <b>1067</b> <b>1087</b>
--	------------------------	-----------------------------	---

# ILS or LOC RWY 36

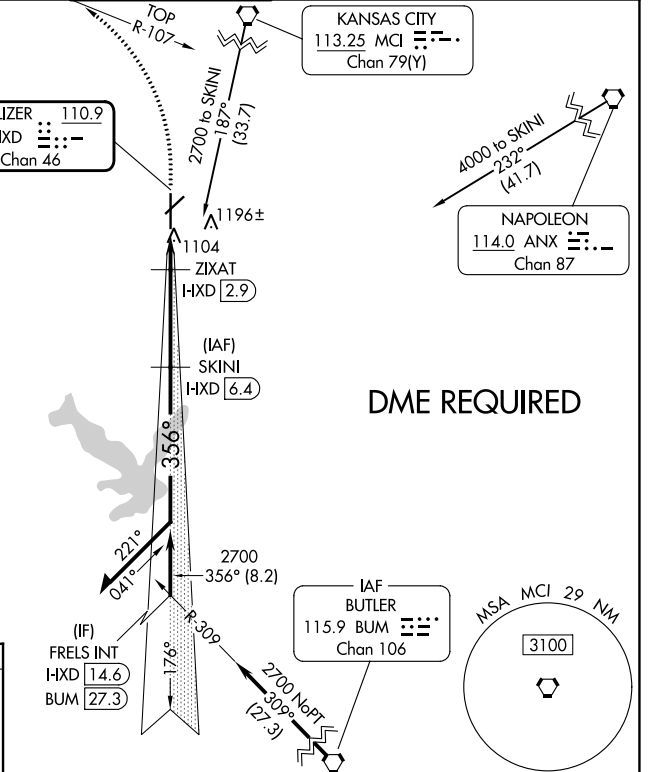
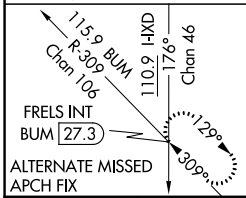
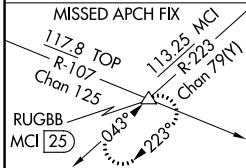
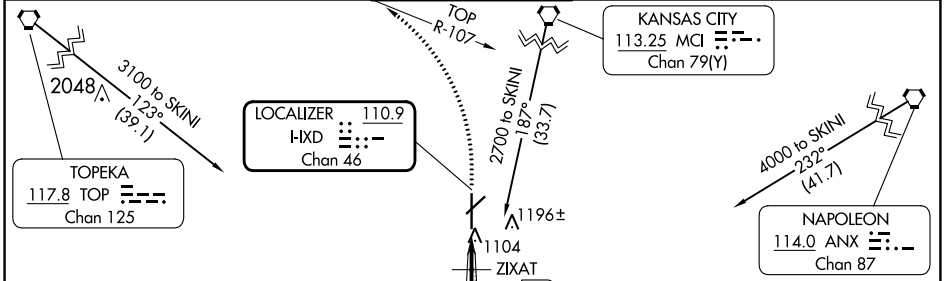
## NEW CENTURY AIRCENTER (IXD)

**DME required.**  
For inop ALS, increase S-LOC 36 Cat C/D visibility to 1 SM.

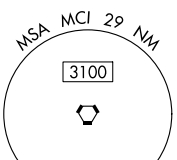
**MALS R**

**MISSED APPROACH:** Climb to 2700 then climbing left turn to 4000 on TOP VORTAC R-107 to RUGBB/MCI 25 DME and hold.

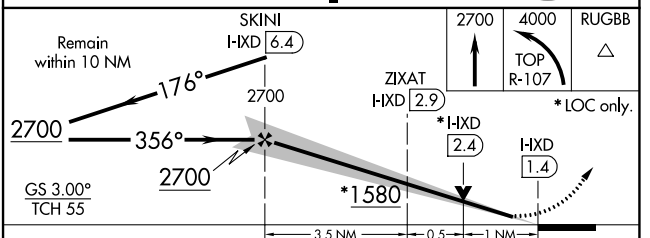
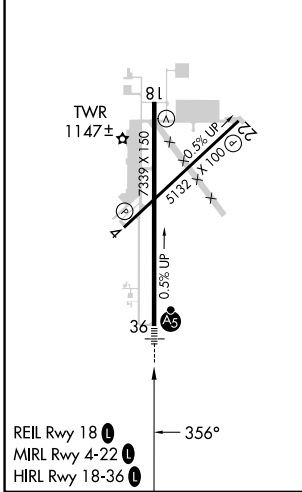
ASOS <b>135.325</b>	KANSAS CITY APP CON <b>118.9 251.075</b>	NEW CENTURY TOWER* <b>133.0 (CTAF) 0</b>	GND CON <b>124.3</b>	UNICOM <b>122.95</b>
------------------------	---	---	-------------------------	-------------------------



**DME REQUIRED**



ELEV 1087	TDZE 1067
-----------	-----------



CATEGORY	A	B	C	D
S-ILS 36	1267-1/2 200 (200-1/2)			
S-LOC 36	1420-1/2	353 (400-1/2)	1420-5/8	353 (400-5/8)
<b>C</b> CIRCLING	1560-1	473 (500-1)	1580-1/2 493 (500-1/2)	1640-2 553 (600-2)

NC-2, 22 FEB 2024 to 21 MAR 2024

NC-2, 22 FEB 2024 to 21 MAR 2024

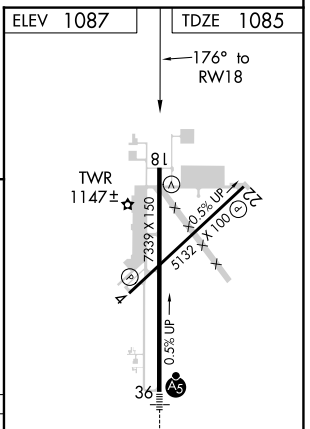
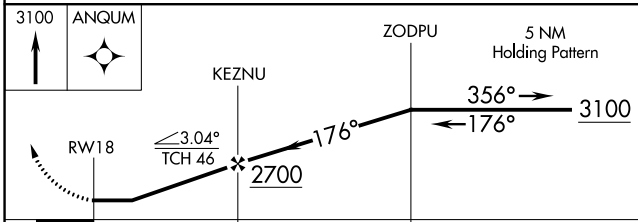
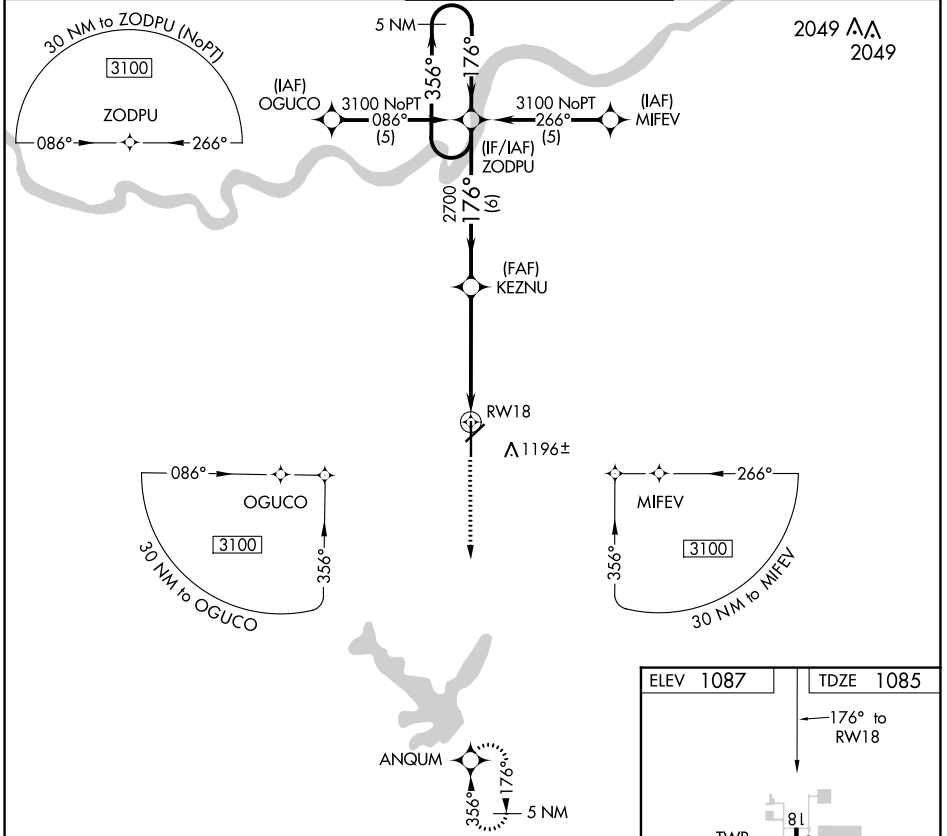
APP CRS <b>176°</b>	Rwy ldg TDZE Apt Elev	<b>7339</b> <b>1085</b> <b>1087</b>
------------------------	-----------------------------	---

# RNAV (GPS) RWY 18

## NEW CENTURY AIRCENTER (IXD)

**▼** DME/DME RNP-0.3 NA. If local altimeter setting not received, use Johnson County Exec altimeter setting and increase all MDAs 20 feet. **▲** MISSED APPROACH: Climb to 3100 direct ANQUM and hold.

ASOS <b>135.325</b>	KANSAS CITY APP CON <b>118.9 251.075</b>	NEW CENTURY TOWER * <b>133.0 (CTAF) 0</b>	GND CON <b>124.3</b>	UNICOM <b>122.95</b>
------------------------	---	--	-------------------------	-------------------------



CATEGORY	A	B	C	D
LNVA MDA	1500-1	415 (500-1)	1500-1¼	415 (500-1¼)
<b>C</b> CIRCLING	1560-1	473 (500-1)	1580-1½	1640-2
			493 (500-1½)	553 (600-2)

REIL Rwy 18 **0**  
MIRL Rwy 4-22 **0**  
HIRL Rwy 18-36 **0**

NC-2, 22 FEB 2024 to 21 MAR 2024

NC-2, 22 FEB 2024 to 21 MAR 2024

WAAS CH <b>45739</b> <b>W22A</b>	APP CRS <b>223°</b>	Rwy Idg TDZE Apt Elev	<b>5132</b> <b>1087</b> <b>1087</b>
--	------------------------	-----------------------------	---

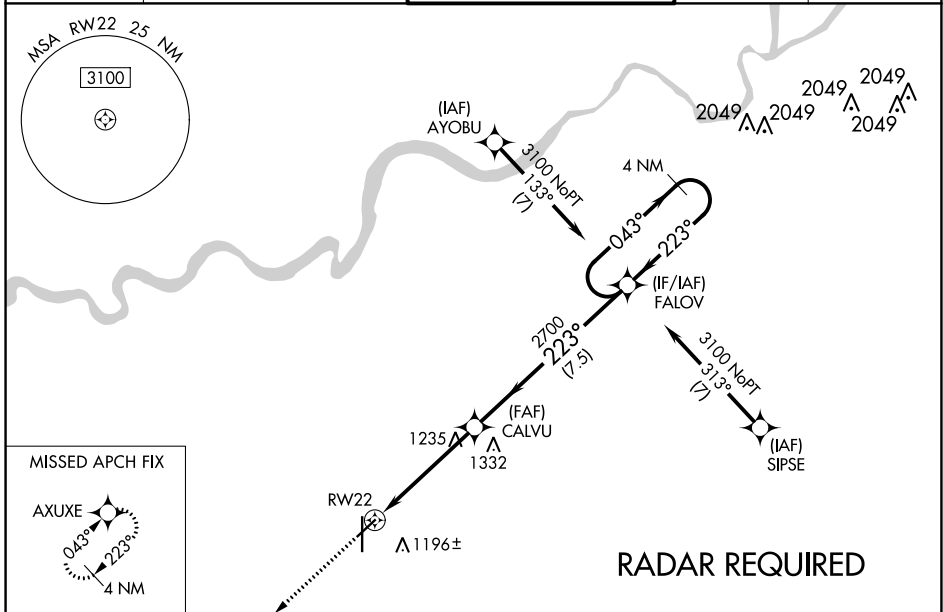
# RNAV (GPS) RWY 22

NEW CENTURY AIRCENTER (IXD)

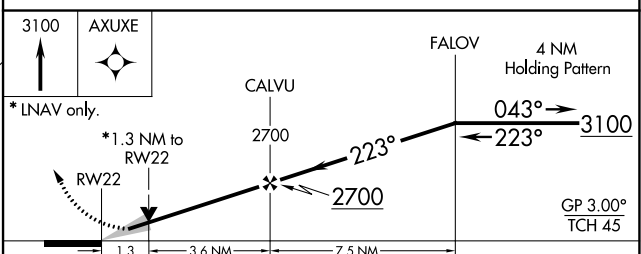
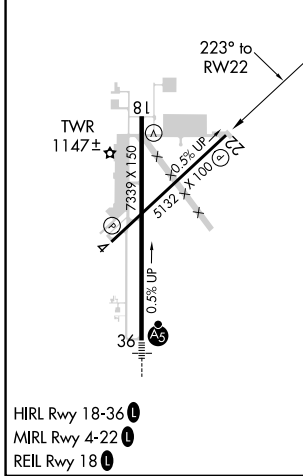
**⚠** For uncompensated Baro-VNAV systems, LNAV/VNAV NA below -17°C (-2°F) or above 54°C (130°F). Baro-VNAV and VDP NA when using Johnson County Exec altimeter setting. DME/DME RNP-0.3 NA. When local altimeter setting not received, use Johnson County Exec altimeter setting: increase LPV DA to 1355 feet, and LNAV/VNAV DA to 1368 feet, and all MDA 20 feet.

MISSED APPROACH: Climb to 3100 direct AXUXE and hold.

ASOS <b>135.325</b>	KANSAS CITY APP CON <b>118.9 251.075</b>	NEW CENTURY TOWER ★ <b>133.0 (CTAF) 0</b>	GND CON <b>124.3</b>	UNICOM <b>122.95</b>
------------------------	---	--	-------------------------	-------------------------



ELEV 1087	TDZE 1087
-----------	-----------



CATEGORY	A	B	C	D
LPV DA	DA	1337-1	250 (300-1)	
LNAV/VNAV DA	DA	1350-1	263 (300-1)	
LNAV MDA	1540-1	453 (500-1)	1540-1½	453 (500-1½)
<b>C</b> CIRCLING	1560-1	473 (500-1)	1580-1½ 493 (500-1½)	1640-2 553 (600-2)

NC-2, 22 FEB 2024 to 21 MAR 2024

NC-2, 22 FEB 2024 to 21 MAR 2024

WAAS CH <b>81807</b> <b>W36A</b>	APP CRS <b>356°</b>	Rwy Idg <b>7339</b> TDZE <b>1066</b> Apt Elev <b>1087</b>
--	------------------------	---

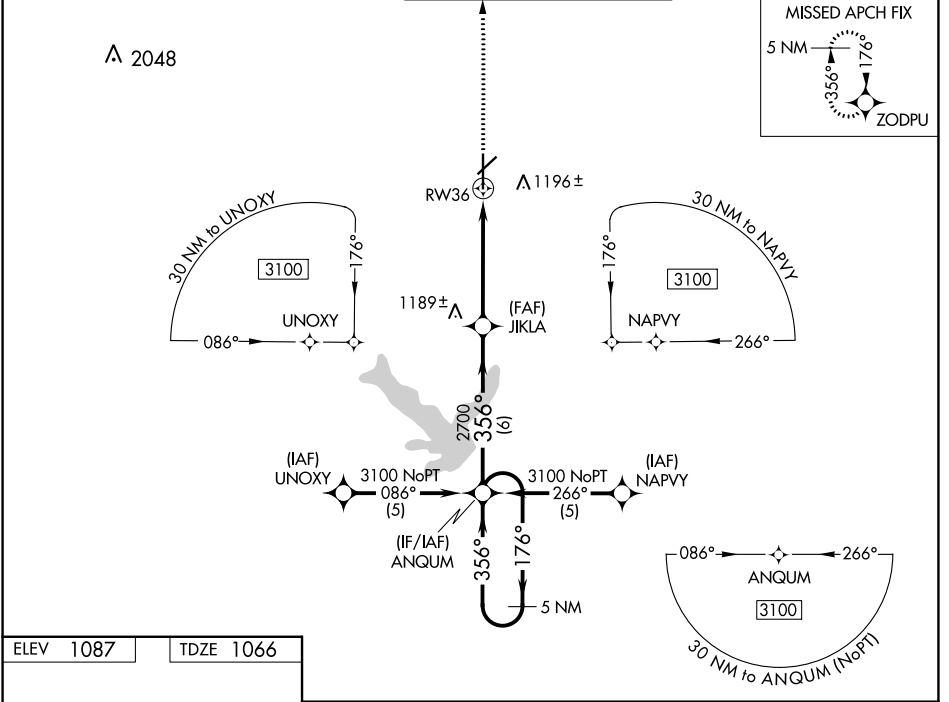
# RNAV (GPS) RWY 36

NEW CENTURY AIRCENTER (IXD)

**⚠** DME/DME RNP-0.3 NA. For inop MALS, increase LNAV Cat D visibility to 1 1/4 and LPV visibility to 1 all Cats. If local altimeter setting not received, use Johnson County Exec altimeter setting and increase all DA/MDAs 20 feet. VDP NA with Johnson County Exec altimeter setting.

**MALS**  MISSED APPROACH: Climb to 3100 direct ZODPU and hold.

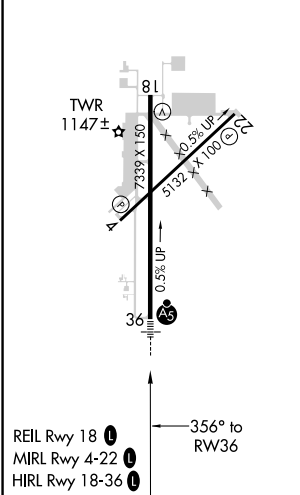
ASOS <b>135.325</b>	KANSAS CITY APP CON <b>118.9 251.075</b>	NEW CENTURY TOWER * <b>133.0 (CTAF) 0</b>	GND CON <b>124.3</b>	UNICOM <b>122.95</b>
------------------------	---	--	-------------------------	-------------------------



NC-2, 22 FEB 2024 to 21 MAR 2024

NC-2, 22 FEB 2024 to 21 MAR 2024

ELEV 1087	TDZE 1066
-----------	-----------



5 NM Holding Pattern		ANQUM		3100		ZODPU	
3100 ← 176°		→ 356°		356°		*INAV only.	
GP 3.00°		TCH 50		2700		*1.1 NM to RWY36	
		6 NM		3.9 NM		1.1 NM	
CATEGORY	A	B	C	D			
LPV DA	1316-1/2			250 (300-1/2)			
LNAV/VNAV DA	NA						
LNAV MDA	1440-1/2		374 (400-1/2)		1440-1		
					374 (400-1)		
<b>C</b> CIRCLING	1560-1		473 (500-1)		1580-1/2		1640-2
					493 (500-1/2)		553 (600-2)

WAAS CH <b>86439</b> <b>W04A</b>	APP CRS <b>043°</b>	Rwy Idg TDZE Apt Elev	<b>5132</b> <b>1080</b> <b>1087</b>
--	------------------------	-----------------------------	---

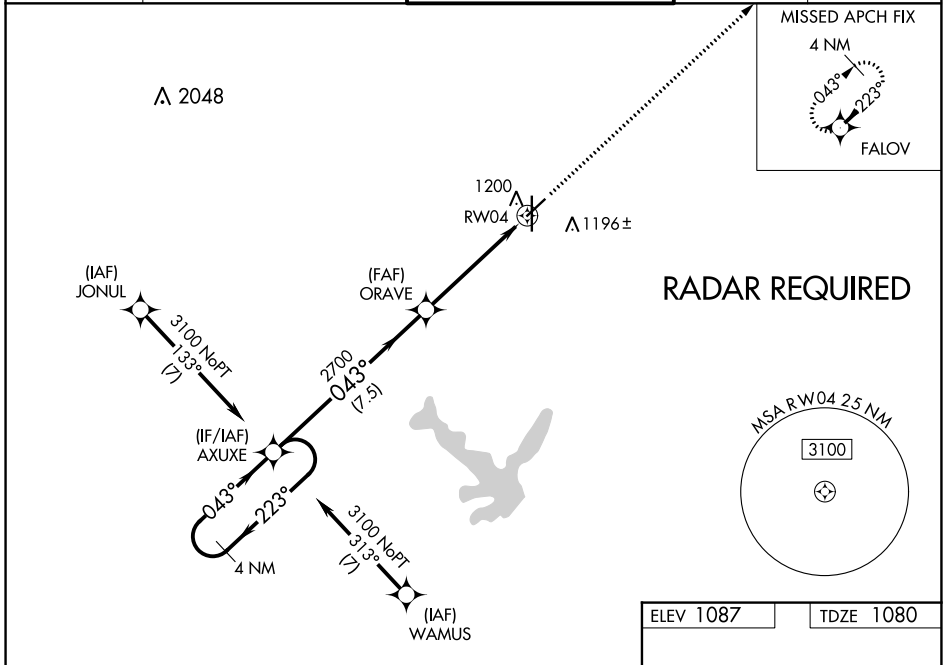
# RNAV (GPS) RWY 4

NEW CENTURY AIRCENTER (IXD)

**⚠** For uncompensated Baro-VNAV systems, LNAV/VNAV NA below -17°C (-2°F) or above 54°C (130°F). Baro-VNAV and VDP NA when using Johnson County Exec altimeter setting. DME/DME RNP-0.3 NA. When local altimeter setting not received, use Johnson County Exec altimeter setting: increase LPV DA to 1348 feet and LNAV/VNAV DA to 1448 feet and all MDA 20 feet; increase LNAV Cat C/D visibility 1/8 mile.

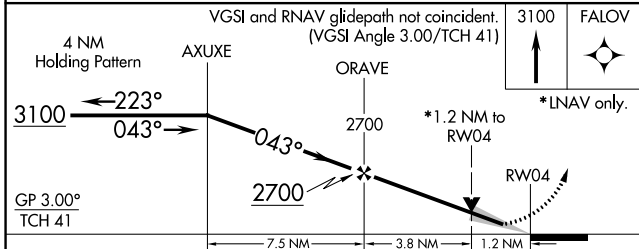
MISSED APPROACH: Climb to 3100 direct FALOV and hold.

ASOS <b>135.325</b>	KANSAS CITY APP CON <b>118.9 251.075</b>	NEW CENTURY TOWER ★ <b>133.0 (CTAF) 0</b>	GND CON <b>124.3</b>	UNICOM <b>122.95</b>
------------------------	---	--	-------------------------	-------------------------



NC-2, 22 FEB 2024 to 21 MAR 2024

NC-2, 22 FEB 2024 to 21 MAR 2024



CATEGORY	A	B	C	D
LPV DA	1330-1 250 (300-1)			
LNAV/VNAV DA	1430-1¼ 350 (400-1¼)			
LNAV MDA	1500-1	420 (500-1)	1500-1½	420 (500-1½)
<b>C</b> CIRCLING	1560-1	473 (500-1)	1580-1½	1640-2 493 (500-1½) 553 (600-2)

