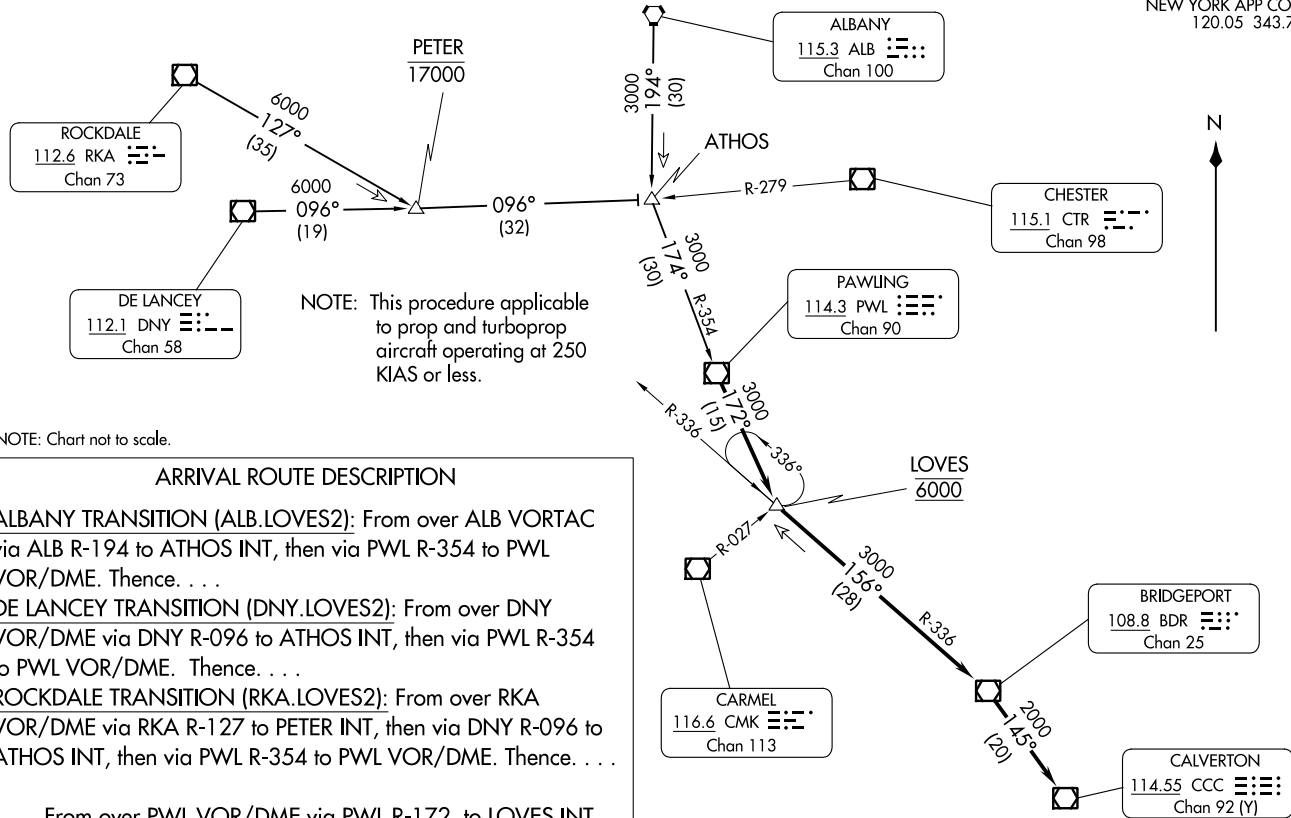


ATIS 120.725
NEW YORK APP CON
120.05 343.75



NOTE: This procedure applicable to prop and turboprop aircraft operating at 250 KIAS or less.

NOTE: Chart not to scale.

ARRIVAL ROUTE DESCRIPTION

ALBANY TRANSITION (ALB.LOVES2): From over ALB VORTAC via ALB R-194 to ATHOS INT, then via PWL R-354 to PWL VOR/DME. Thence. . .

DE LANCEY TRANSITION (DNY.LOVES2): From over DNY VOR/DME via DNY R-096 to ATHOS INT, then via PWL R-354 to PWL VOR/DME. Thence. . .

ROCKDALE TRANSITION (RKA.LOVES2): From over RKA VOR/DME via RKA R-127 to PETER INT, then via DNY R-096 to ATHOS INT, then via PWL R-354 to PWL VOR/DME. Thence. . .

. . . . From over PWL VOR/DME via PWL R-172 to LOVES INT. Then via BDR R-336 to BDR VOR/DME. Then via direct to CCC VOR/DME. Expect radar vectors to the final approach course.

LOVES TWO ARRIVAL
(LOVES.LOVES2) 115FP97

LONG ISLAND MAC ARTHUR (ISP)
NEW YORK, NEW YORK

LOVES.LOVES2) 24025
LOVES TWO ARRIVAL

AL-948 (FAA)

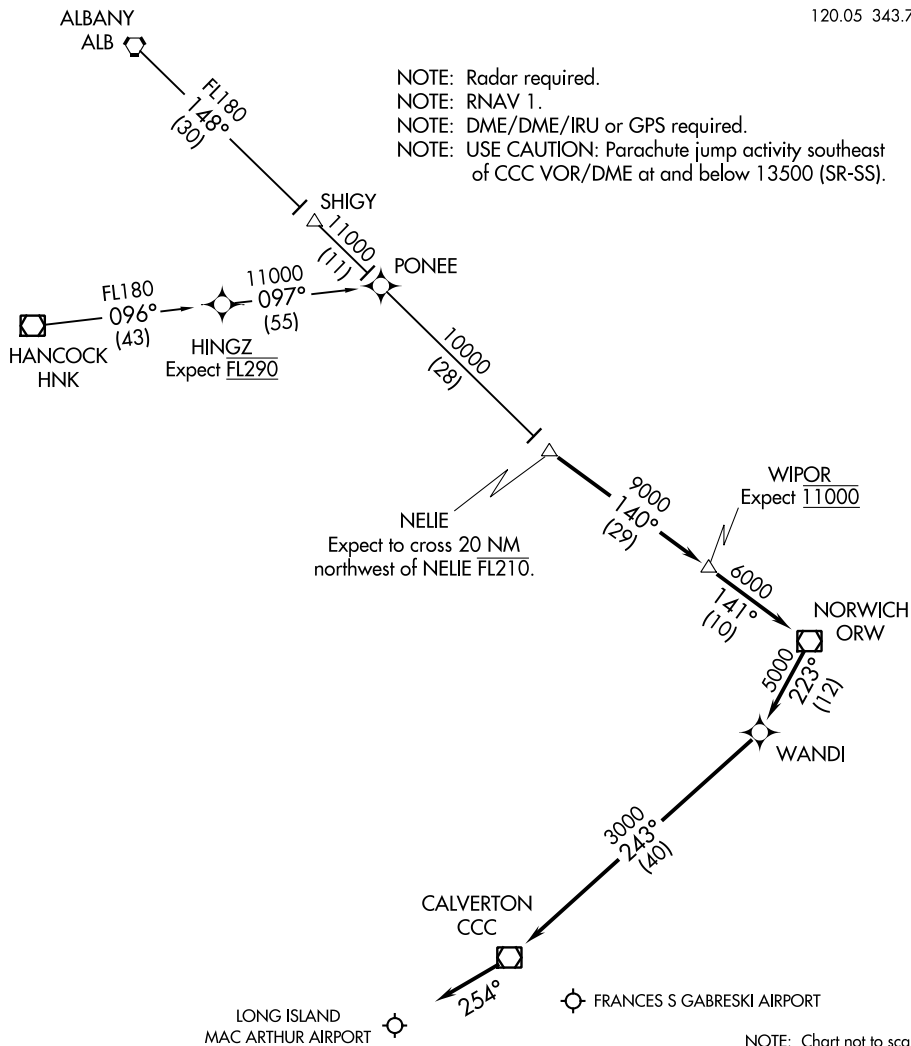
LONG ISLAND MAC ARTHUR (ISP)
NEW YORK, NEW YORK

NELIE THREE ARRIVAL (RNAV)

NEW YORK, NEW YORK

ATIS 120.725
NEW YORK APP CON
120.05 343.75

NOTE: Radar required.
NOTE: RNAV 1.
NOTE: DME/DME/IRU or GPS required.
NOTE: USE CAUTION: Parachute jump activity southeast of CCC VOR/DME at and below 13500 (SR-SS).



NE-2, 22 FEB 2024 to 21 MAR 2024

NE-2, 22 FEB 2024 to 21 MAR 2024

NOTE: Chart not to scale.

ARRIVAL ROUTE DESCRIPTION

- ALBANY TRANSITION (ALB.NELIE3):
- HANCOCK TRANSITION (HNK.NELIE3):
- HINGZ TRANSITION (HINGZ.NELIE3):

....From NELIE on track 140° to WIPOR, then on track 141° to ORW VOR/DME, then on track 223° track to WANDI, then on track 243° to CCC VOR/DME, then on heading 254° or as assigned by ATC. Expect vectors to final approach course.

NELIE THREE ARRIVAL (RNAV)

NEW YORK, NEW YORK