

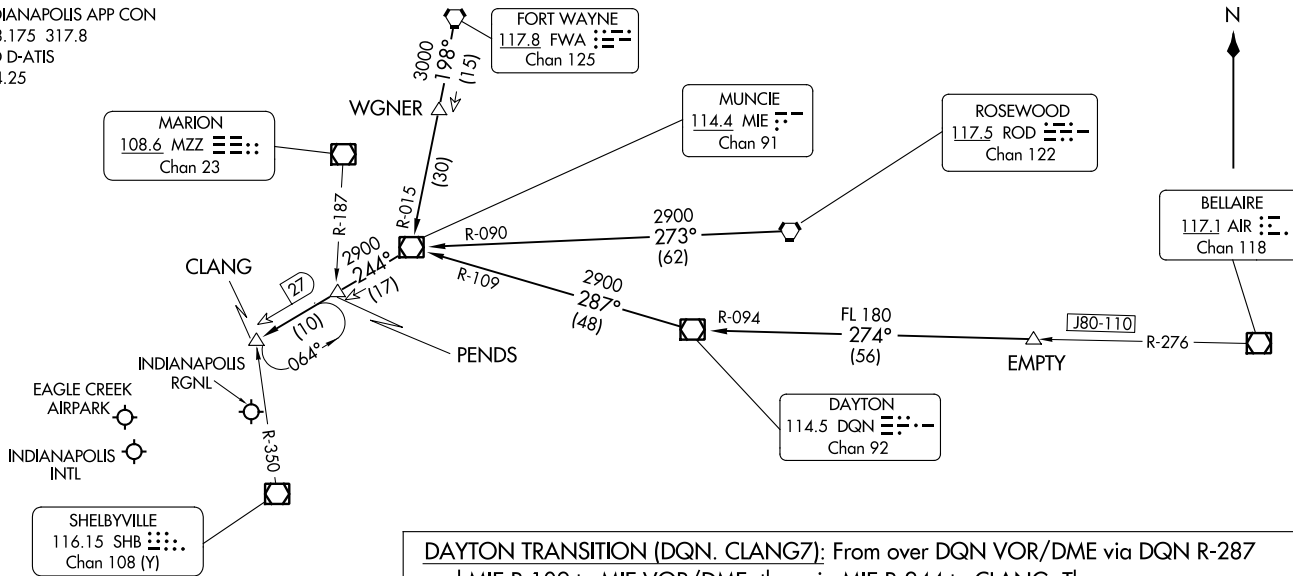
CLANG SEVEN ARRIVAL  
(CLANG, CLANG7) 27 APR 17

(CLANG, CLANG7) 23334  
CLANG SEVEN ARRIVAL

AL-203 (FAA)

INDIANAPOLIS, INDIANA

INDIANAPOLIS APP CON  
128.175 317.8  
IND D-ATIS  
134.25



DAYTON TRANSITION (DQN, CLANG7): From over DQN VOR/DME via DQN R-287 and MIE R-109 to MIE VOR/DME, then via MIE R-244 to CLANG. Thence....

EMPTY TRANSITION (EMPTY, CLANG7): From over EMPTY via DQN R-094 to DQN VOR/DME, then via DQN R-287 and MIE R-109 to MIE VOR/DME, then via MIE R-244 to CLANG. Thence....

FORT WAYNE TRANSITION (FWA, CLANG7): From over FWA VORTAC via FWA R-198 and MIE R-015 to MIE VOR/DME, then via MIE R-244 to CLANG. Thence....

ROSEWOOD TRANSITION (ROD, CLANG7): From over ROD VORTAC via ROD R-273 and MIE R-090 to MIE VOR/DME, then via MIE R-244 to CLANG. Thence....  
....from over CLANG, expect vectors to final approach course.

LOST COMMUNICATIONS:

LANDING IND: In the event of lost communication prior to runway assignment, execute the ILS Runway 23R approach.

NOTE: Radar required.

NOTE: Chart not to scale.

INDIANAPOLIS, INDIANA



(JAKKS.JAKKS2) 17173

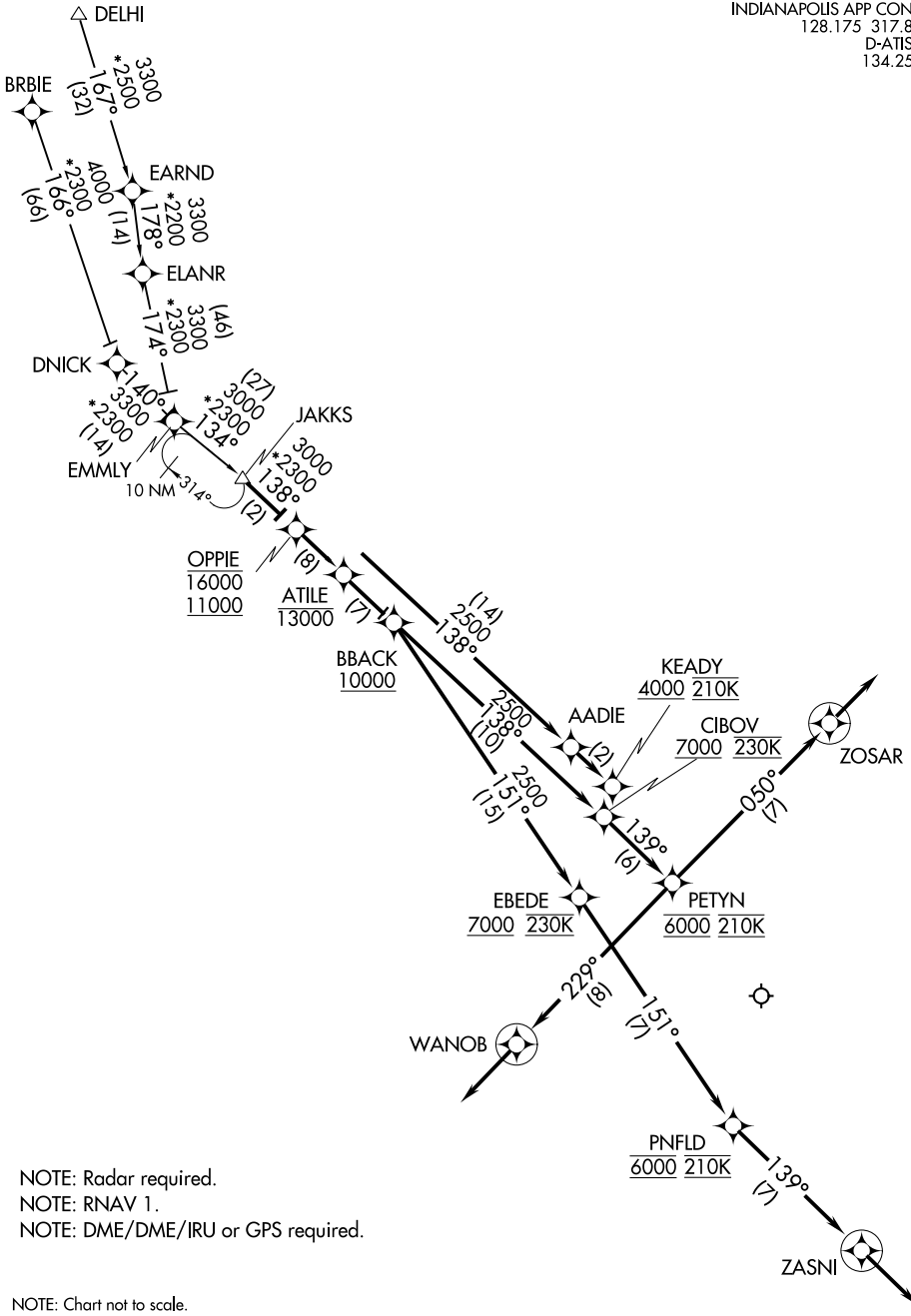
AL-203 (FAA)

INDIANAPOLIS INTL (IND)

# JAKKS TWO ARRIVAL (RNAV)

INDIANAPOLIS, INDIANA

INDIANAPOLIS APP CON  
128.175 317.8  
D-ATIS  
134.25



EC-2, 22 FEB 2024 to 21 MAR 2024

EC-2, 22 FEB 2024 to 21 MAR 2024

# JAKKS TWO ARRIVAL (RNAV)

(JAKKS.JAKKS2) 10NOV16

INDIANAPOLIS, INDIANA  
INDIANAPOLIS INTL (IND)

JAKKS TWO ARRIVAL (RNAV)

ARRIVAL ROUTE DESCRIPTION

BRBIE TRANSITION (BRBIE.JAKKS2):

DELHI TRANSITION (DELHI.JAKKS2):

ELANR TRANSITION (ELANR.JAKKS2):

From JAKKS on track 138° to cross OPPIE between 11000 and 16000, then on track 138° to cross ATILE at or below 13000.

LANDING RWY 5L/R: From ATILE on track 138° to cross BBACK at or above 10000, then on track 138° to cross CIBOV at or above 7000 and at 230K, then on track 139° to cross PETYN at 6000 and at 210K, then on track 229° to WANOB, then on track 229°. Expect radar vectors to final approach course.

LANDING RWY 14: From ATILE on track 138° to AADIE, then on track 138° to cross KEADY at or above 4000 and at 210K. Expect RNAV (RNP), RNAV (GPS) or ILS or LOC Rwy 14 or radar vectors to final approach course.

LANDING RWY 23L/R: From ATILE on track 138° to cross BBACK at or above 10000, then on track 138° to cross CIBOV at or above 7000 and at 230K, then on track 139° to cross PETYN at 6000 and at 210K, then on track 050° to ZOSAR, then on track 050°. Expect radar vectors to final approach course.

LANDING RWY 32: From ATILE on track 138° to cross BBACK at or above 10000, then on track 151° to cross EBEDE at or above 7000 and at 230K, then on track 151° to cross PNFLD at 6000 and at 210K, then on track 139° to ZASNI, then on track 139°. Expect radar vectors to final approach course.

LOST COMMUNICATIONS: In the event of lost communication prior to runway assignment, execute ILS or LOC RWY 23R approach.

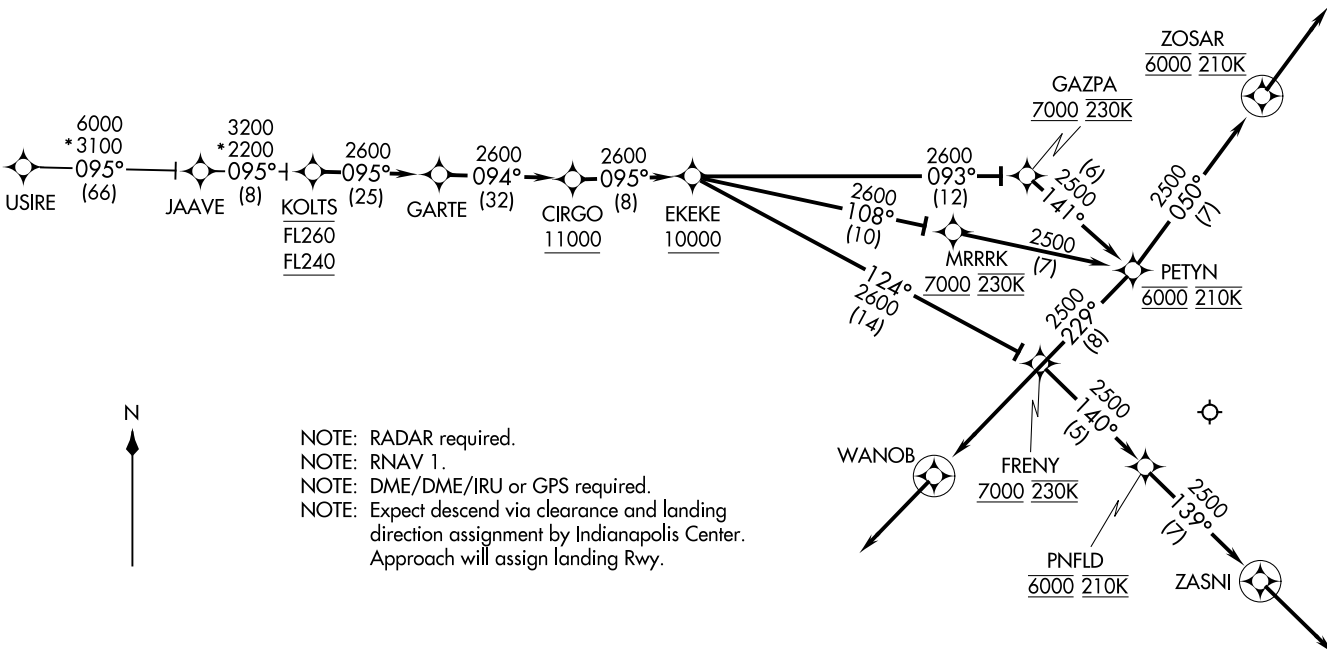
EC-2, 22 FEB 2024 to 21 MAR 2024

EC-2, 22 FEB 2024 to 21 MAR 2024

KOLTS TWO ARRIVAL (RNAV)  
(KOLTS, KOLTS2) 10 NOV 16

(KOLTS, KOLTS2) 17173  
KOLTS TWO ARRIVAL (RNAV)

INDIANAPOLIS APP CON  
128.175 317.8  
D-ATIS  
134.25



(NARRATIVE ON FOLLOWING PAGE)

NOTE: Chart not to scale.

INDIANAPOLIS, INDIANA  
INDIANAPOLIS INTL (IND)

INDIANAPOLIS INTL (IND)  
INDIANAPOLIS, INDIANA

AL-203 (FAA)

ARRIVAL ROUTE DESCRIPTION

JAAVE TRANSITION (JAAVE.KOLTS2):

USIRE TRANSITION (USIRE.KOLTS2):

From KOLTS on track 095° to GARTE, then on track 094° to cross CIRGO at or above 11000, then on track 095° to cross EKEKE at or above 10000.

LANDING RWYS 5L/R: From EKEKE on track 093° to cross GAZPA at or above 7000 and at 230K, then on track 141° to cross PETYN at 6000 and at 210K, then on track 229° to WANOB, then on track 229°. Expect RADAR vectors to final approach course.

LANDING RWYS 23L/R: From EKEKE on track 108° to cross MRRRK at or above 7000 and at 230K, then on track 108° to cross PETYN at 6000 and at 210K, then on track 050° to cross ZOSAR at 6000 and at 210K, then on track 050°. Expect RADAR vectors to final approach course.

LANDING RWY 32: From EKEKE on track 124° to cross FRENY at or above 7000 and at 230K, then on track 140° to cross PNFLD at 6000 and at 210K, then on track 139° to ZASNI, then on track 139°. Expect RADAR vectors to final approach course.

LOST COMMUNICATIONS: In the event of lost communication prior to runway assignment, execute ILS or LOC Rwy 23R approach.

EC-2, 22 FEB 2024 to 21 MAR 2024

EC-2, 22 FEB 2024 to 21 MAR 2024

# RACYR SIX ARRIVAL

INDIANAPOLIS, INDIANA

INDIANAPOLIS APP CON  
128.175 317.8  
IND D-ATIS  
134.25

BRICKYARD  
116.3 VHP  
Chan 110

INDIANAPOLIS  
EXEC

RADAR required.  
DME required.

INDIANAPOLIS  
METRO

EAGLE CREEK  
AIRPARK

INDIANAPOLIS  
RGNL

INDIANAPOLIS  
INTL

INDY SOUTH  
GREENWOOD

TERRE HAUTE  
115.3 TTH  
Chan 100

KELLY

SHELBYVILLE  
116.15 SHB  
Chan 108 (Y)

BIBLE GROVE  
109.0 BIB  
Chan 27

DRWUD

HOOSIER  
110.2 OOM  
Chan 39

6000  
\*2200  
078°  
078°  
(15)

REEMO

43  
084°  
(30)  
45

RACYR

6000  
\*2100  
027°  
027°  
(66)

POCKET CITY  
113.3 PXV  
Chan 80

NOTE: Chart not to scale.

## ARRIVAL ROUTE DESCRIPTION

**BIBLE GROVE TRANSITION (BIB.RACYR6):** From over BIB VORTAC on BIB R-078 and OOM R-264 to RACYR. Thence....

**POCKET CITY TRANSITION (PXV.RACYR6):** From over PXV VORTAC on PXV R-027 and VHP R-209 to RACYR. Thence....

....from over RACYR on VHP VORTAC R-209 to DRWUD, then on VHP VORTAC R-209 to KELLY, then on VHP VORTAC R-209 to VHP VORTAC. Expect radar vectors to final approach course.

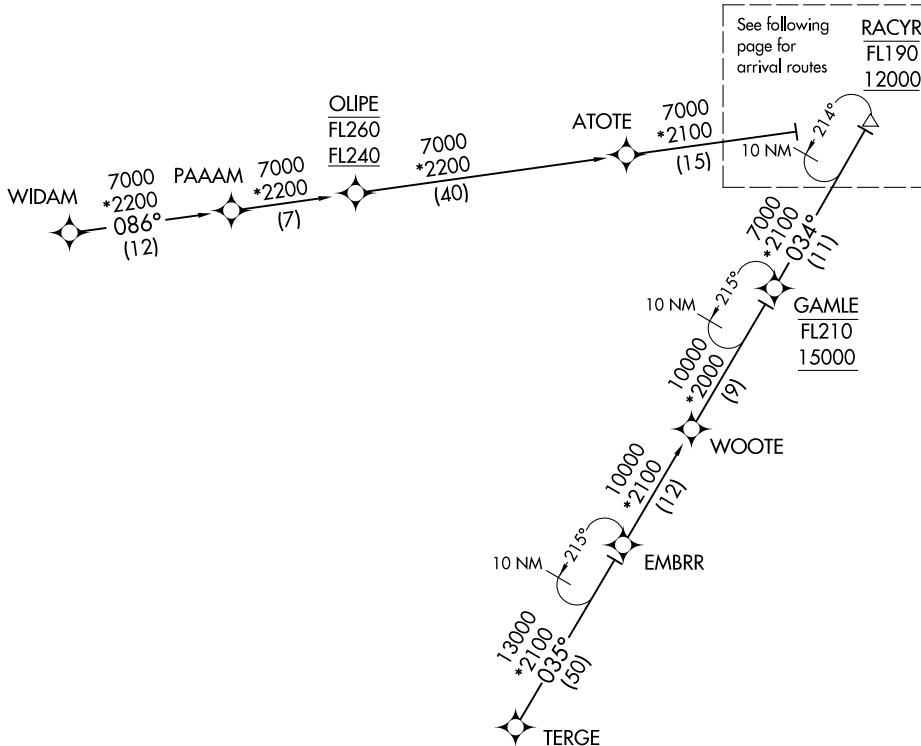
**LOST COMMUNICATIONS:** Landing IND: In the event of lost communication prior to runway assignment, execute the ILS Runway 23R approach.

# RACYR SIX ARRIVAL

INDIANAPOLIS, INDIANA

SMUKE TWO ARRIVAL (RNAV) Transition Routes

INDIANAPOLIS APP CON  
128.175 317.8  
D-ATIS  
134.25



- NOTE: RADAR required.
- NOTE: RNAV 1.
- NOTE: DME/DME/IRU or GPS required.
- NOTE: Expect descend via clearance and landing direction assignment by Indianapolis Center. Approach will assign landing Rwy.
- NOTE: For non-GPS equipped aircraft landing Rwy 23L; SHB DME must be operational.
- NOTE: For non-GPS equipped aircraft landing Rwy 23R; SHB and VHP DMEs must be operational.

(CONTINUED ON FOLLOWING PAGE)

EMBRR TRANSITION (EMBRR.SMUKE2):  
TERGE TRANSITION (TERGE.SMUKE2):  
WIDAM TRANSITION (WIDAM.SMUKE2):

NOTE: Chart not to scale.



(RACYR.SMUKE2) 17173

AL-203 (FAA)

INDIANAPOLIS INTL (IND)

SMUKE TWO ARRIVAL (RNAV) Arrival Routes

INDIANAPOLIS, INDIANA

INDIANAPOLIS APP CON

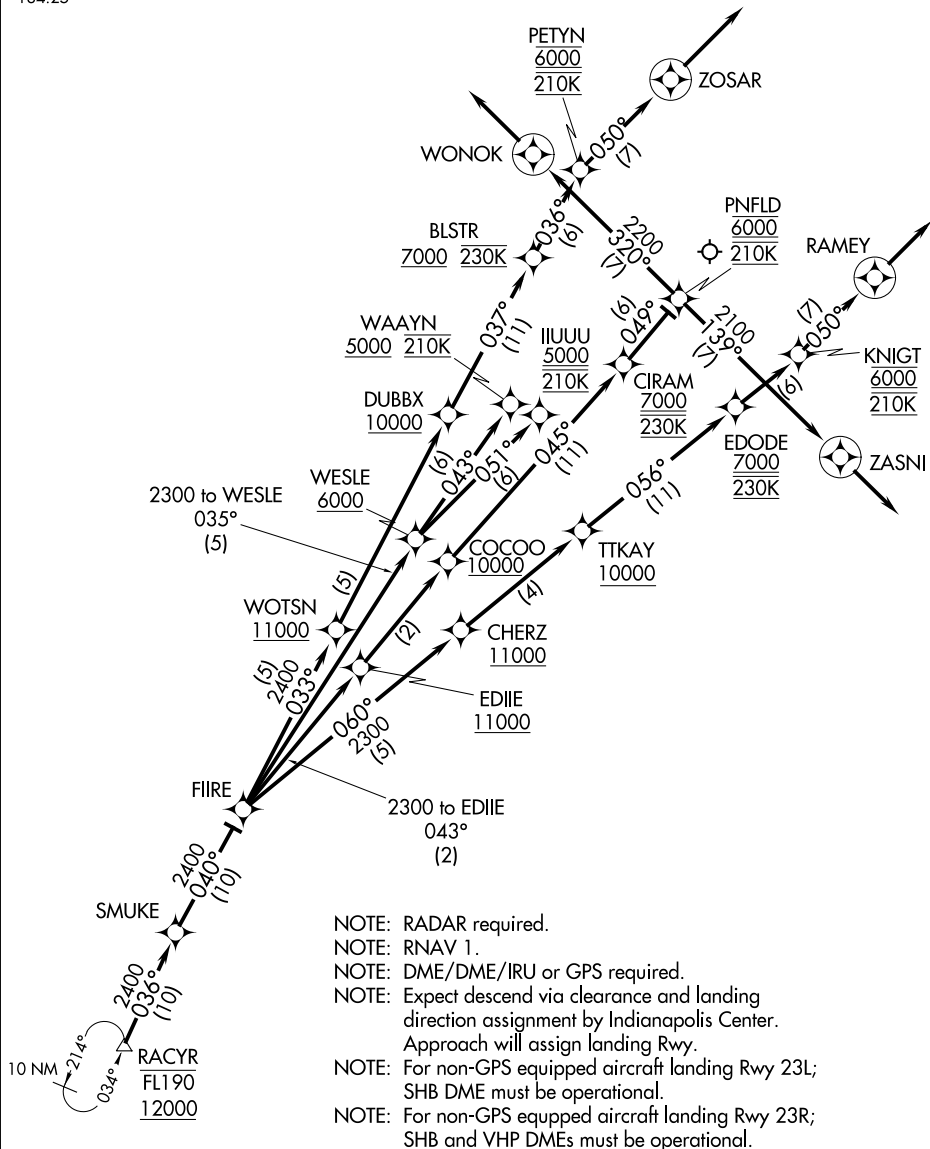
128.175 317.8

D-ATIS

134.25

EC-2, 22 FEB 2024 to 21 MAR 2024

EC-2, 22 FEB 2024 to 21 MAR 2024



(NARRATIVE ON FOLLOWING PAGE)

NOTE: Chart not to scale.

SMUKE TWO ARRIVAL (RNAV) Arrival Routes

(RACYR.SMUKE2) 10NOV16

INDIANAPOLIS, INDIANA

INDIANAPOLIS INTL (IND)

ARRIVAL ROUTE DESCRIPTION

From RACYR on track 036° to SMUKE, then on track 040° to FIIRE.

LANDING RWY 5L: From FIIRE on track 035° to cross WESLE at or above 6000, then on track 043° to cross WAAYN at or above 5000 and at 210K. Expect RNAV (RNP), RNAV (GPS) or ILS or LOC RWY 5L or radar vectors to final approach course.

LANDING RWY 5R: From FIIRE on track 035° to cross WESLE at or above 6000, then on track 051° to cross IUUUU at or above 5000 and at 210K. Expect RNAV (RNP), RNAV (GPS) or ILS or LOC RWY 5R or radar vectors to final approach course.

LANDING RWY 14: From FIIRE on track 043° to cross EDIIE at or above 11000, then on track 043° to cross COCOO at or above 10000, then on track 045° to cross CIRAM at or above 7000 and at 230K, then on track 049° to cross PNFLD at 6000 and at 210K, then on track 320° to WONOK, then on track 320°. Expect radar vectors to final approach course.

LANDING RWY 23L: From FIIRE on track 060° to cross CHERZ at or above 11000, then on track 060° to cross TTKAY at or above 10000, then on track 056° to cross EDODE at or above 7000 and at 230K, then on track 056° to cross KNIGT at 6000 and at 210K, then on track 050° to RAMEY, then on track 050°. Expect radar vectors to final approach course.

LANDING RWY 23R: From FIIRE on track 033° to cross WOTSN at or above 11000, then on track 033° to cross DUBBX at or above 10000, then on track 037° to cross BLSTR at or above 7000 and at 230K, then on track 036° to cross PETYN at 6000 and at 210K, then on track 050° to ZOSAR, then on track 050°. Expect radar vectors to final approach course.

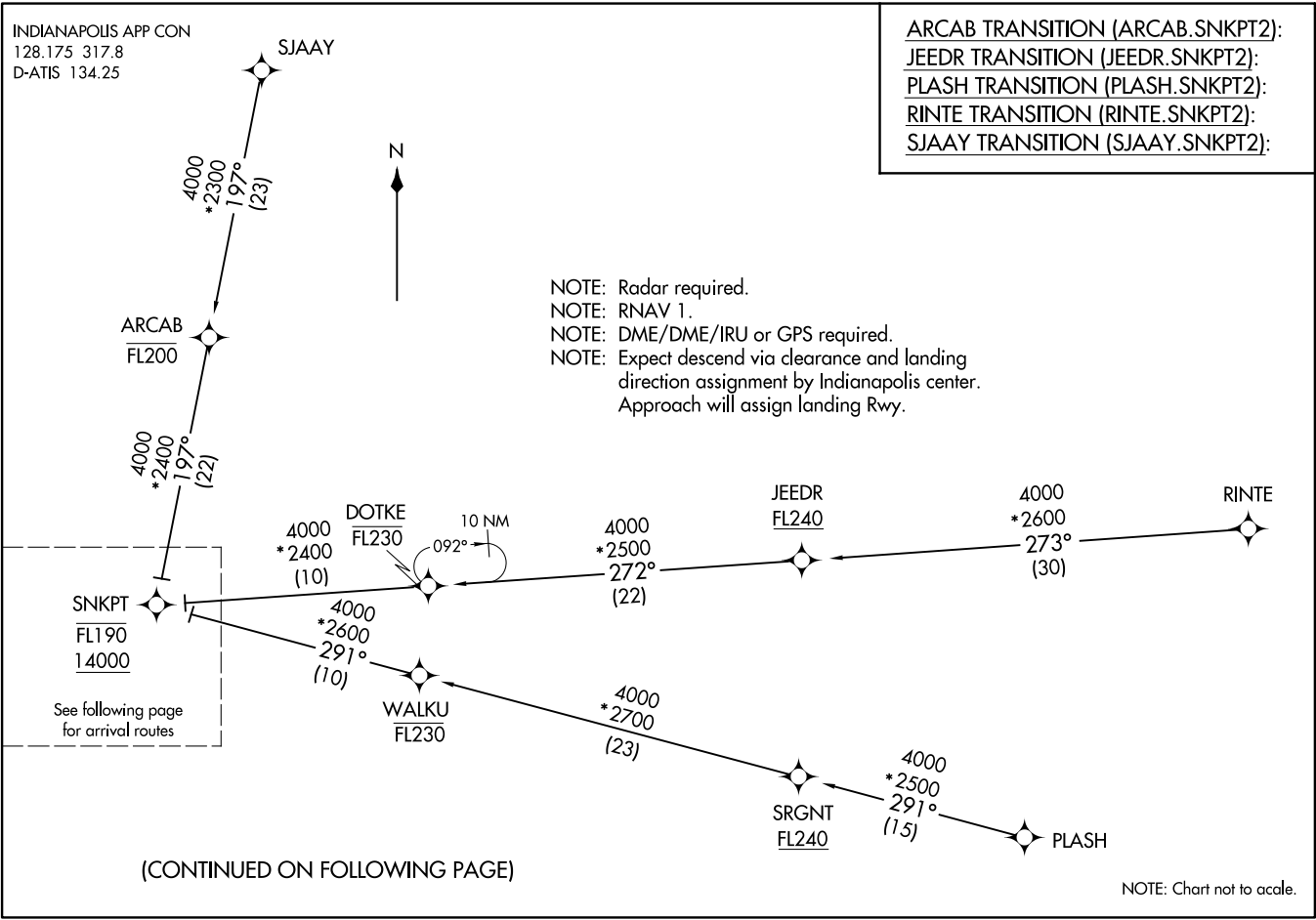
LANDING RWY 32: From FIIRE on track 043° to cross EDIIE at or above 11000, then on track 043° to cross COCOO at or above 10000, then on track 045° to cross CIRAM at or above 7000 and at 230K, then on track 049° to cross PNFLD at 6000 and at 210K, then on track 139° to ZASNI, then on track 139°. Expect radar vectors to final approach course.

LOST COMMUNICATIONS: In the event of lost communication prior to runway assignment, execute ILS or LOC Rwy 23R approach.

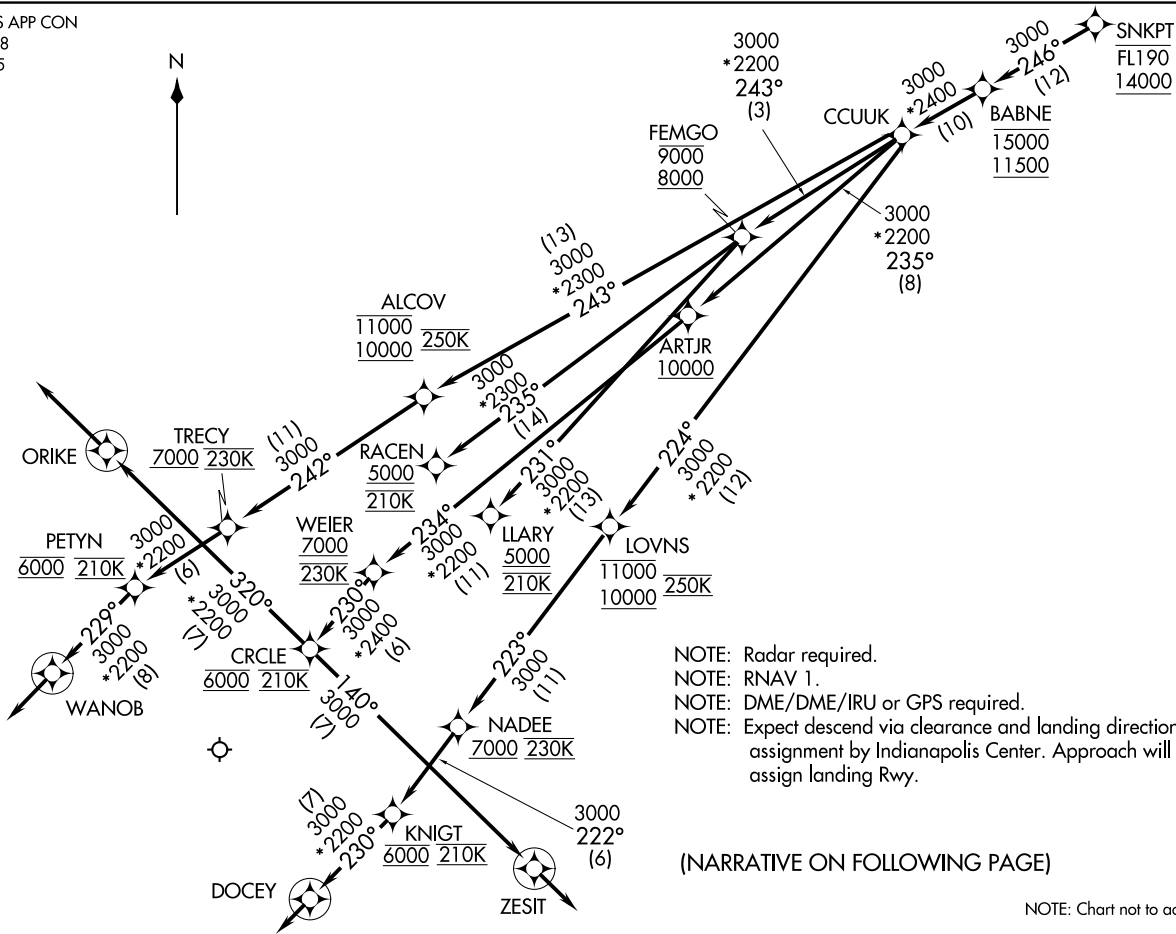
EC-2, 22 FEB 2024 to 21 MAR 2024

EC-2, 22 FEB 2024 to 21 MAR 2024

SNKPT TWO ARRIVAL (RNAV) Transition Routes  
(SNKPT.SNKPT2) 10 NOV 16



INDIANAPOLIS APP CON  
128.175 317.8  
D-ATIS 134.25



NOTE: Radar required.  
 NOTE: RNAV 1.  
 NOTE: DME/DME/IRU or GPS required.  
 NOTE: Expect descend via clearance and landing direction assignment by Indianapolis Center. Approach will assign landing Rwy.

(NARRATIVE ON FOLLOWING PAGE)

NOTE: Chart not to scale.

SNKPT TWO ARRIVAL (RNAV) Arrival Routes  
(SNKPT.SNKPT2) 10 NOV 16

INDIANAPOLIS, INDIANA  
INDIANAPOLIS INTL (IND)

(SNKPT.SNKPT2) 17173  
SNKPT TWO ARRIVAL (RNAV) Arrival Routes  
AI-203 (FAA)

INDIANAPOLIS INTL (IND)  
INDIANAPOLIS, INDIANA

## ARRIVAL ROUTE DESCRIPTION

From SNKPT on track 246° to cross BABNE between 11500 and 15000, then on track 246° to CCUUK.

LANDING RWY 5L: From CCUUK on track 243° to cross ALCOV between 10000 and 11000 and at 250K, then on track 242° to cross TREC Y at/above 7000 and at 230K, then on track 242° to cross PETYN at 6000 and at 210K, then on track 229° to WANOB, then on track 229°. Expect radar vectors to final approach course.

LANDING RWY 5R: From CCUUK on track 224° to cross LOVNS between 10000 and 11000 and at 250K, then on track 223° to cross NADEE at/above 7000 and at 230K, then on track 222° to cross KNIGT at 6000 and at 210K, then on track 230° to DOCEY, then on track 230°. Expect radar vectors to final approach course.

LANDING RWY 14: From CCUUK on track 235° to cross ARTJR at/above 10000, then on track 234° to cross WEIER at/above 7000 and at 230K then on track 230° to cross CRCL E at 6000 and at 210K, then on track 320° to ORIKE, then on track 320°. Expect radar vectors to final approach course.

LANDING RWY 23L: From CCUUK on track 243° to cross FEMGO between 8000 and 9000, then on track 231° to cross LLARY at/above 5000 and at 210K. Expect RNAV (RNP), RNAV (GPS) or ILS or LOC to Rwy 23L or radar vectors to final approach course.

LANDING RWY 23R: From CCUUK on track 243° to cross FEMGO between 8000 and 9000, then on track 235° to cross RACEN at/above 5000 and at 210K. Expect RNAV (RNP), RNAV (GPS) or ILS or LOC to Rwy 23R or radar vectors to final approach course.

LANDING RWY 32: From CCUUK on track 235° to cross ARTJR at/above 10000, then on track 234° to cross WEIER at/above 7000 and at 230K then on track 230° to cross CRCL E at 6000 and at 210K, then on track 140° to ZESIT, then on track 140°. Expect radar vectors to final approach course.

LOST COMMUNICATION:

In the event of lost communication prior to runway assignment, execute ILS or LOC Rwy 23R approach.