

BUNZZ THREE DEPARTURE (RNAV)  
(BUNZZ3.BUNZZ) 25UN15

D-ATIS 134.85  
CLNC DEL 135.7 317.8  
CPDLC  
GND CON  
121.9 317.8 (EAST)  
121.625 348.6 (WEST)  
DULLES TOWER  
120.1 317.8 (Rwy 1R/19L)  
120.25 348.6 (Rwy 1C/19C)  
134.425 348.6 (Rwys 1L/19R, 12/30)  
POTOMAC DEP CON  
126.65

RAMAY

8400  
\*4600  
301°  
(15)

BUNZZ

TOP ALTITUDE:  
3000

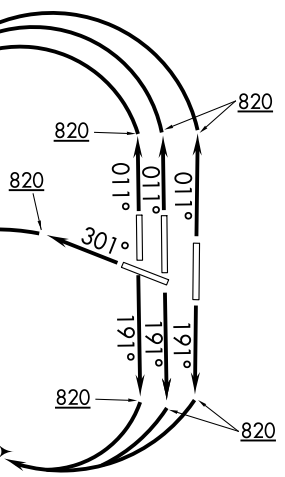
272°  
(10)

LOULU

310°  
(13)

WHYUU

TIICE  
257°  
(6)



- NOTE: DME/DME/IRU or GPS required.
- NOTE: RNAV 1.
- NOTE: Turbojets only.
- NOTE: Radar required.
- NOTE: Aircraft may be Radar vectored to LOULU, TIICE, WHYUU, BUNZZ, or RAMAY.

DEPARTURE ROUTE DESCRIPTION

**TAKEOFF RUNWAYS 1C/1L/1R:** Climb heading 011° to 820, then left turn direct LOULU (or heading assigned by ATC), then on depicted course to BUNZZ, thence. . .

**TAKEOFF RUNWAYS 19C/19R/19L:** Climb heading 191° to 820, then right turn direct TIICE (or heading assigned by ATC), then on depicted course to BUNZZ, thence. . .

**TAKEOFF RUNWAY 30:** Climb heading 301° to 820, then left turn direct LOULU (or heading assigned by ATC), then on depicted course to BUNZZ, thence. . .

. . . Maintain 3000. Expect clearance to filed altitude within ten (10) minutes after departure.

**TAKEOFF MINIMUMS:**  
Rwy 12: NA-ATC.  
Rwy 1C, 1L, 1R, 19C, 19L, 19R, 30:  
Standard with minimum climb of 500' per NM to 820.

RAMAY TRANSITION (BUNZZ3.RAMAY)

NOTE: Chart not to scale.

WASHINGTON, DC  
WASHINGTON DULLES INTL (IAD)

(BUNZZ3.BUNZZ) 18032  
BUNZZ THREE DEPARTURE (RNAV)

WASHINGTON DULLES INTL (IAD)  
WASHINGTON, DC  
A1-5100 (FAA)

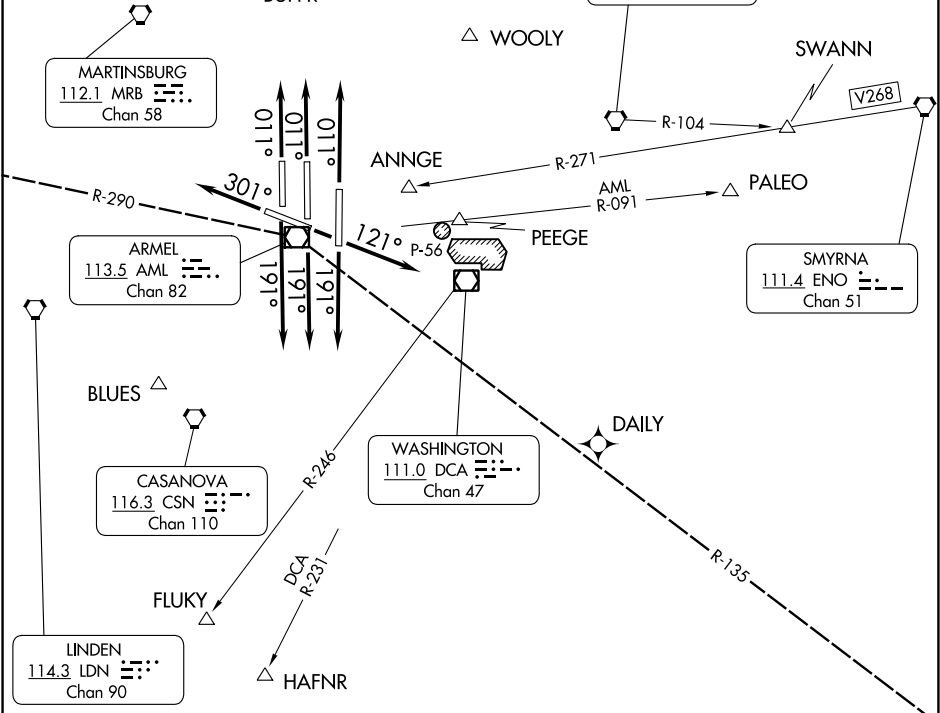
# CAPITAL ONE DEPARTURE

D-ATIS 134.85  
 CLNC DEL 135.7 317.8  
 CPDLC  
 GND CON  
 121.9 317.8 (EAST)  
 121.625 348.6 (WEST)  
 DULLES TOWER  
 120.1 317.8 (Rwy 1R/19L)  
 120.25 348.6 (Rwy 1C/19C)  
 134.425 348.6 (Rwys 1L/19R, 12/30)

POTOMAC DEP CON  
 NORTH  
 125.05 350.2

WESTMINSTER  
 117.9 EMI  
 Chan 126

**TOP ALTITUDE:  
 3000**



NE-3, 22 FEB 2024 to 21 MAR 2024

NE-3, 22 FEB 2024 to 21 MAR 2024

MARTINSBURG  
 112.1 MRB  
 Chan 58

BALTIMORE  
 115.1 BAL  
 Chan 98

ARMEL  
 113.5 AML  
 Chan 82

SMYRNA  
 111.4 ENO  
 Chan 51

CASANOVA  
 116.3 CSN  
 Chan 110

WASHINGTON  
 111.0 DCA  
 Chan 47

LINDEN  
 114.3 LDN  
 Chan 90

POTOMAC DEP CON  
 SOUTH  
 126.65 350.2

GORDONSVILLE  
 115.6 GVE  
 Chan 103

**TAKEOFF MINIMUMS:**  
 Rwys 1C, 1R, 1L, 12, 19C,  
 19R, 19L, 30: Standard.

NOTE: RADAR required.

NOTE: Chart not to scale.

(NARRATIVE ON FOLLOWING PAGE)

# CAPITAL ONE DEPARTURE

# CAPITAL ONE DEPARTURE



## DEPARTURE ROUTE DESCRIPTION

TAKE OFF RUNWAYS 1C, 1L, 1R: Climb heading 011° or as assigned by ATC,  
Thence. . . .

TAKE OFF RUNWAY 12: Climb heading 121° or as assigned by ATC, Thence. . . .

TAKE OFF RUNWAYS 19C, 19L, 19R: Climb heading 191° or as assigned by ATC,  
Thence. . . .

TAKE OFF RUNWAY 30: Climb heading 301° or as assigned by ATC, Thence. . . .

. . . .Expect radar vectors to filed/assigned route or depicted fix. Maintain 3000,  
expect clearance to filed altitude/flight level 10 minutes after departure.

**SPECIAL INSTRUCTIONS:** For appropriate departure control frequency, see graphic.  
Use frequency depicted within sector where your first Navaid/Fix/Route is located,  
or as assigned.

NE-3, 22 FEB 2024 to 21 MAR 2024

NE-3, 22 FEB 2024 to 21 MAR 2024

CLTCH THREE DEPARTURE (RNAV)  
(CLTCH3.CLTCH) 31DEC20

D-ATIS  
134.85  
CLNC DEL  
135.7 317.8  
CPDLC  
GND CON  
121.9 317.8 (EAST)  
121.625 348.6 (WEST)  
DULLES TOWER  
120.1 317.8 (Rwy 1R/19L)  
120.25 348.6 (Rwy 1C/19C)  
134.425 348.6 (Rwys 1L/19R, 12/30)  
POTOMAC DEP CON  
126.65 350.2

**TAKEOFF MINIMUMS:**  
Rwys 1L/C/R, 19L/C/R, 30:  
Standard with minimum climb  
of 500' per NM to 820.



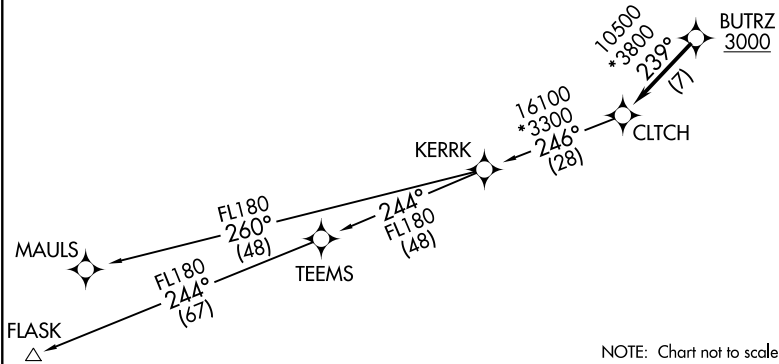
**TOP ALTITUDE:  
3000**

(CLTCH3.CLTCH) 20366  
CLTCH THREE DEPARTURE (RNAV)

A1-5100 (FAA)

NOTE: RNAV 1.  
NOTE: RADAR required.  
NOTE: DME/DME/IRU or GPS required.  
NOTE: Turbo-jets only.

WASHINGTON, DC  
WASHINGTON DULLES INTL (IAD)



**DEPARTURE ROUTE DESCRIPTION**

**TAKEOFF RWY 1L/C/R, 19L/C/R, 30:** Climb on heading assigned by ATC, expect RADAR vectors to BUTRZ, then on track 239° to CLTCH, thence. . . .

. . . .on assigned transition. Maintain 3000. Expect clearance to filed altitude within ten (10) minutes after departure.

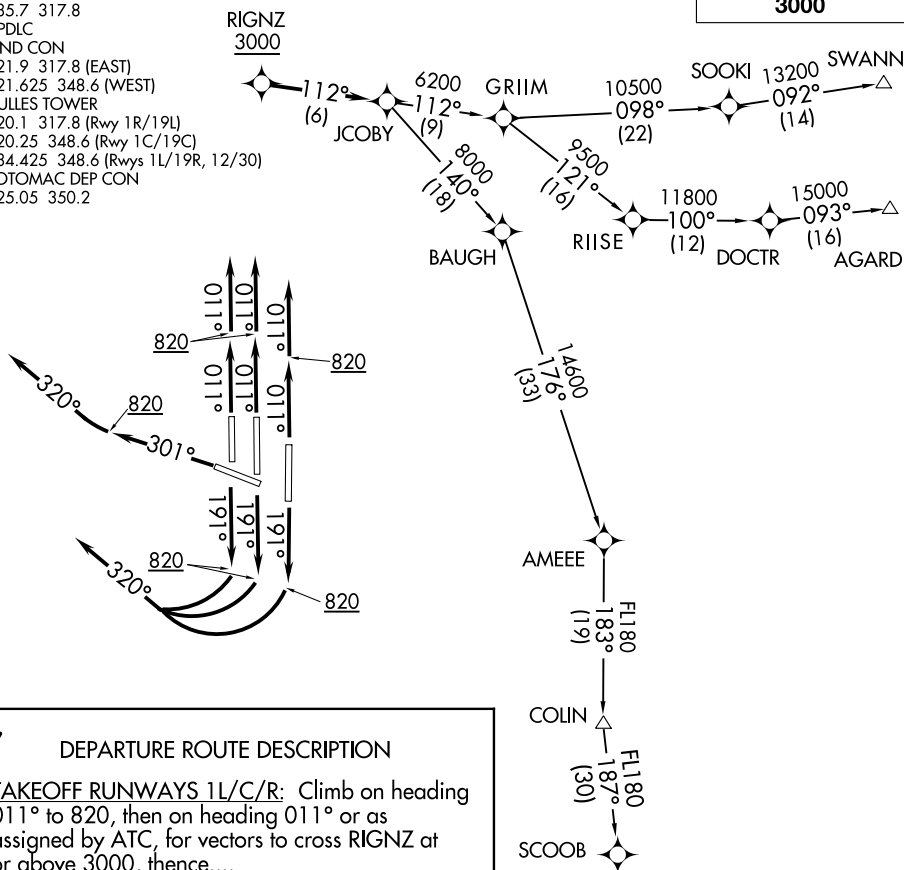
FLASK TRANSITION (CLTCH3.FLASK)  
MAULS TRANSITION (CLTCH3.MAULS)

WASHINGTON DULLES INTL (IAD)  
WASHINGTON, DC

# JCOBY FOUR DEPARTURE (RNAV)

**TOP ALTITUDE:  
3000**

D-ATIS 134.85  
 CLNC DEL  
 135.7 317.8  
 CPDLC  
 GND CON  
 121.9 317.8 (EAST)  
 121.625 348.6 (WEST)  
 DULLES TOWER  
 120.1 317.8 (Rwy 1R/19L)  
 120.25 348.6 (Rwy 1C/19C)  
 134.425 348.6 (Rwys 1L/19R, 12/30)  
 POTOMAC DEP CON  
 125.05 350.2



## DEPARTURE ROUTE DESCRIPTION

**TAKEOFF RUNWAYS 1L/C/R:** Climb on heading 011° to 820, then on heading 011° or as assigned by ATC, for vectors to cross RIGNZ at or above 3000, thence....

**TAKEOFF RUNWAYS 19L/C/R:** Climb on heading 191° to 820, then turn right heading 320° or as assigned by ATC, for vectors to cross RIGNZ at or above 3000, thence....

**TAKEOFF RUNWAY 30:** Climb on heading 301° to 820, then turn right heading 320° or as assigned by ATC, for vectors to cross RIGNZ at or above 3000, thence....

...on track 112° to JCOBY. Then on assigned transition. Maintain 3000. Expect clearance to filed altitude within ten (10) minutes after departure.

**AGARD TRANSITION (JCOBY4.AGARD):**

**COLIN TRANSITION (JCOBY4.COLIN):**

**SCOOB TRANSITION (JCOBY4.SCOOB):**

**SWANN TRANSITION (JCOBY4.SWANN):**

## TAKEOFF MINIMUMS

Rwys 1L/C/R, 19L/C/R, 30:

Standard with minimum climb of 500' per NM to 820.

NOTE: RNAV 1.

NOTE: DME/DME/IRU or GPS required.

NOTE: RADAR required.

NOTE: Turbojets only.

NOTE: COLIN/SCOOB Transitions - Part 121 aircraft only.

NOTE: SWANN/AGARD Transitions - Part 121 and Part 129 aircraft only.

NOTE: Chart not to scale.

NE-3, 22 FEB 2024 to 21 MAR 2024

NE-3, 22 FEB 2024 to 21 MAR 2024

# JDUBB FOUR DEPARTURE (RNAV)

D-ATIS  
134.85  
CLNC DEL  
135.7 317.8  
CPDLC  
GND CON  
121.9 317.8 (EAST)  
121.625 348.6 (WEST)  
DULLES TOWER  
120.1 317.8 (Rwy 1R/19L)  
120.25 348.6 (Rwy 1C/19C)  
134.425 348.6 (Rwys 1L/19R, 12/30)  
POTOMAC DEP CON  
126.65 350.2

**TOP ALTITUDE:  
3000**



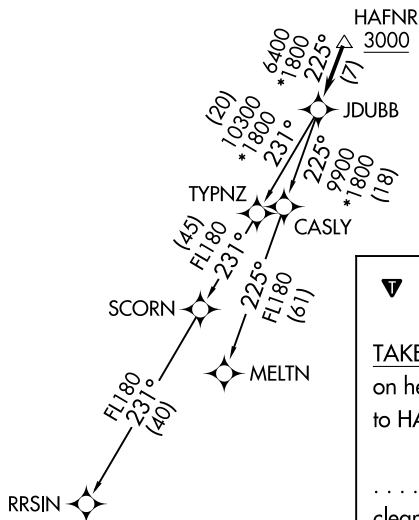
### TAKEOFF MINIMUMS:

Rwys 1L/C/R, 19L/C/R, 30:  
Standard with minimum climb  
of 500' per NM to 820.

- NOTE: RNAV 1.
- NOTE: RADAR required.
- NOTE: DME/DME/IRU or GPS required.
- NOTE: Turbo-jets only.

NE-3, 22 FEB 2024 to 21 MAR 2024

NE-3, 22 FEB 2024 to 21 MAR 2024



NOTE: Chart not to scale.

### ▼ DEPARTURE ROUTE DESCRIPTION

TAKEOFF RUNWAY 1L/C/R, 19L/C/R, 30: Climb on heading assigned by ATC, expect RADAR vectors to HAFNR, then on track 225° to JDUBB, thence. . . .  
  
 . . . on assigned transition. Maintain 3000. Expect clearance to filed altitude within 10 minutes after departure.

MELTN TRANSITION (JDUBB4.MELTN)  
RRSIN TRANSITION (JDUBB4.RRSIN)

(JERES2.JERES) 18032

AL-5100 (FAA)

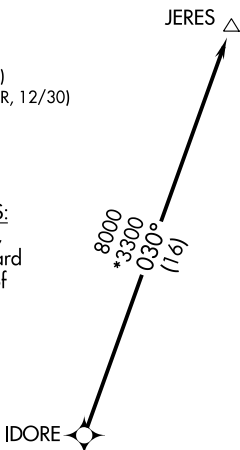
WASHINGTON DULLES INTL (IAD)  
WASHINGTON, DC

# JERES TWO DEPARTURE (RNAV)

**TOP ALTITUDE:  
3000**

D-ATIS 134.85  
CLNC DEL 135.7 317.8  
CPDLC  
GND CON  
121.9 317.8 (EAST)  
121.625 348.6 (WEST)  
DULLES TOWER  
120.1 317.8 (Rwy 1R/19L)  
120.25 348.6 (Rwy 1C/19C)  
134.425 348.6 (Rwys 1L/19R, 12/30)  
POTOMAC DEP CON  
125.05 350.2

**TAKEOFF MINIMUMS:**  
Rwys 1C, 1L, 1R, 19L,  
19C, 19R, 30: Standard  
with minimum climb of  
500' per NM to 820.



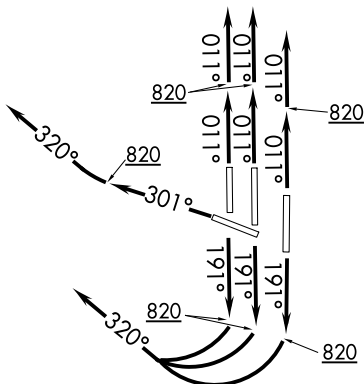
## DEPARTURE ROUTE DESCRIPTION

**TAKEOFF RUNWAYS 1C/1L/1R:** Climb heading 011° to 820, then on heading 011° or as assigned by ATC, expect RADAR vectors to IDORE, thence....

**TAKEOFF RUNWAY 19L/19C/19R:** Climb heading 191° to 820, then right turn heading 320° or as assigned by ATC, expect RADAR vectors to IDORE, thence....

**TAKEOFF RUNWAY 30:** Climb heading 301° to 820, then on heading 320° or as assigned by ATC, expect RADAR vectors to IDORE, thence....

.... on track 030° to JERES, maintain 3000 or as directed by ATC. Expect clearance to filed altitude within ten (10) minutes after departure.



- NOTE: RNAV 1.
- NOTE: DME/DME/IRU or GPS required.
- NOTE: RADAR required.
- NOTE: Turbojets only.

NOTE: Chart not to scale.

NE-3, 22 FEB 2024 to 21 MAR 2024

NE-3, 22 FEB 2024 to 21 MAR 2024

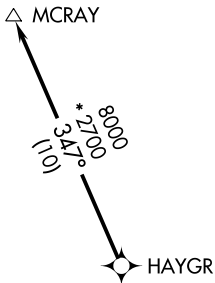
# JERES TWO DEPARTURE (RNAV)

(JERES2.JERES) 15OCT15

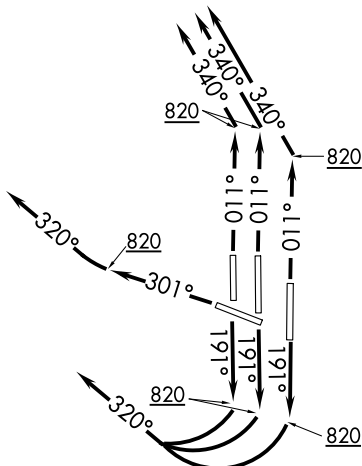
WASHINGTON, DC  
WASHINGTON DULLES INTL (IAD)

# MCRAY TWO DEPARTURE (RNAV)

D-ATIS  
 134.85  
 CLNC DEL  
 135.7 317.8  
 CPDLC  
 GND CON  
 121.9 317.8 (EAST)  
 121.625 348.6 (WEST)  
 DULLES TOWER  
 120.1 317.8 (Rwy 1R/19L)  
 120.25 348.6 (Rwys 1C/19C)  
 134.425 348.6 (Rwys 1L/19R, 12/30)  
 POTOMAC DEP CON  
 125.05 350.2



**TOP ALTITUDE:  
3000**



- NOTE: RNAV 1.
- NOTE: DME/DME/IRU or GPS required.
- NOTE: RADAR required.
- NOTE: Turbojets only.

**TAKEOFF MINIMUMS:**  
 Rwys 1L/C/R, 19L/C/R, 30:  
 Standard with minimum climb  
 of 500' per NM to 820.

NOTE: Chart not to scale.

NE-3, 22 FEB 2024 to 21 MAR 2024

NE-3, 22 FEB 2024 to 21 MAR 2024

## DEPARTURE ROUTE DESCRIPTION

**TAKEOFF RUNWAY 1L/C/R:** Climb heading 011° to 820, then on heading 340° or as assigned by ATC, expect RADAR vectors to HAYGR, thence . . . .

**TAKEOFF RUNWAYS 19L/C/R:** Climb heading 191° to 820, then right turn heading 320° or as assigned by ATC, expect RADAR vectors to HAYGR, thence . . . .

**TAKEOFF RUNWAY 30:** Climb heading 301° to 820, then on heading 320° or as assigned by ATC, expect RADAR vectors to HAYGR, thence . . . .

. . . . on track 347° to MCRAY, maintain 3000 or as directed by ATC. Expect clearance to filed altitude within ten (10) minutes after departure.

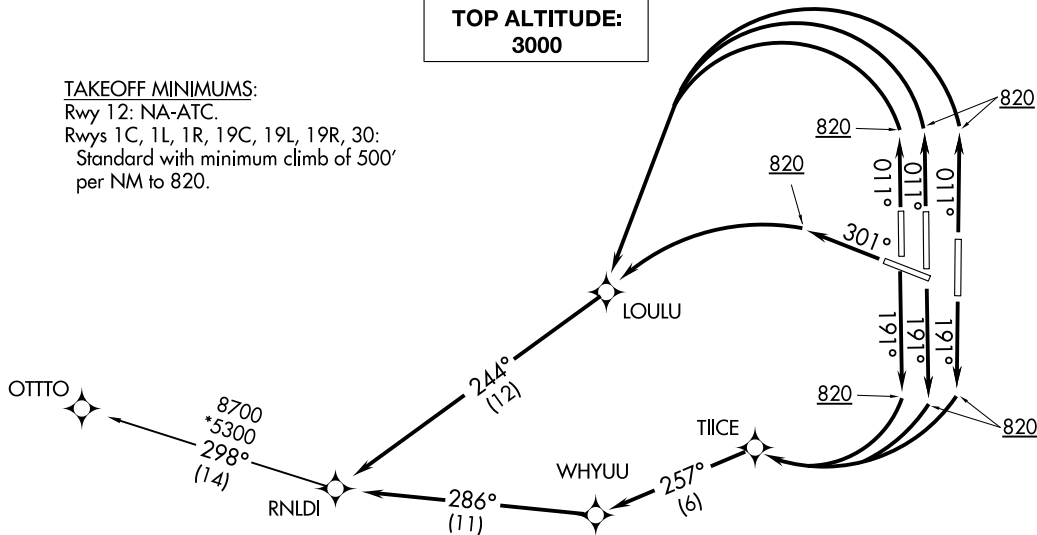


(RNLDI4, RNLDI) 25 JUN 15  
**RNLDI FOUR DEPARTURE (RNAV)**

D-ATIS 134.85  
 CLNC DEL  
 135.7 317.8  
 CPDLC  
 GND CON  
 121.9 317.8 (EAST)  
 121.625 348.6 (WEST)  
 DULLES TOWER  
 120.1 317.8 (Rwy 1R/19L)  
 120.25 348.6 (Rwy 1C/19C)  
 134.425 348.6 (Rwys 1L/19R, 12/30)  
 POTOMAC DEP CON  
 126.65 350.2

**TOP ALTITUDE:  
3000**

**TAKEOFF MINIMUMS:**  
 Rwy 12: NA-ATC.  
 Rwys 1C, 1L, 1R, 19C, 19L, 19R, 30:  
 Standard with minimum climb of 500'  
 per NM to 820.



NOTE: Chart not to scale.



**DEPARTURE ROUTE DESCRIPTION**

**TAKEOFF RWYS 1C/1L/1R:** Climb heading 011° to 820, then climbing left turn direct LOULU (or assigned ATC heading), then on track 244° to RNLDI, thence...  
**TAKEOFF RWYS 19C/19R/19L:** Climb heading 191° to 820, then climbing right turn direct TIICE (or assigned ATC heading), then on depicted route to RNLDI, thence...  
**TAKEOFF RWY 30:** Climb heading 301° to 820, then climbing left turn direct LOULU (or assigned ATC heading), then on track 244° to RNLDI, thence...  
 ... maintain 3000. Expect clearance to filed altitude within ten (10) minutes after departure.

OTTO TRANSITION (RNLDI4.OTTO):

- NOTE: DME/DME/IRU or GPS required.
- NOTE: RNAV 1.
- NOTE: Turbojets only.
- NOTE: RADAR required.
- NOTE: Aircraft may be Radar vectored to LOULU, TIICE, WHYUU, RNLDI or OTTO.

N



(RNLDI4, RNLDI) 18032  
**RNLDI FOUR DEPARTURE (RNAV)**

A-5100 (FAA)

WASHINGTON DULLES INTL (IAD)  
 WASHINGTON, DC

WASHINGTON, DC  
 WASHINGTON DULLES INTL (IAD)

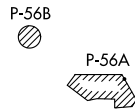
SCRAM SIX DEPARTURE (RNAV)  
 (SCRAM6, SCRAM) 31DEC20

D-ATIS  
 134.85  
 CLNC DEL  
 135.7 317.8  
 CPDLC  
 GND CON  
 121.9 317.8 (EAST)  
 121.625 348.6 (WEST)  
 DULLES TOWER  
 120.1 317.8 (Rwy 1R/19L)  
 120.25 348.6 (Rwy 1C/19C)  
 134.425 348.6 (Rwys 1L/19R, 12/30)  
 POTOMAC DEP CON  
 126.65 350.2

**DEPARTURE ROUTE DESCRIPTION**  
**TAKEOFF RWY 1L/C/R, 19L/C/R, 30:** Climb on heading assigned by ATC, expect RADAR vectors to POOCH, then on track 240° to SCRAM, thence. . . .  
 . . . as depicted. Maintain 3000. Expect clearance to filed altitude within ten (10) minutes after departure.  
**GLANC TRANSITION (SCRAM6.GLANC):**



**TOP ALTITUDE:**  
**3000**



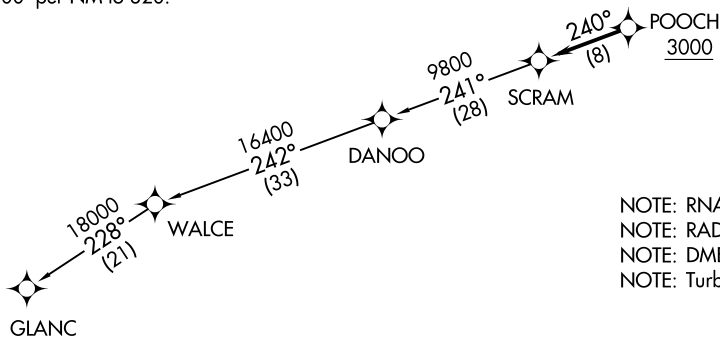
(SCRAM6, SCRAM) 20366  
 SCRAM SIX DEPARTURE (RNAV)

A1-5100 (FAA)

WASHINGTON DULLES INTL (IAD)  
 WASHINGTON, DC

**TAKEOFF MINIMUMS:**

Rwys 1L/C/R, 19L/C/R, 30:  
 Standard with a minimum climb  
 of 500' per NM to 820.



- NOTE: RNAV 1.
- NOTE: RADAR required.
- NOTE: DME/DME/IRU or GPS required.
- NOTE: Turbo-jets only.



NOTE: Chart not to scale.

WASHINGTON, DC  
 WASHINGTON DULLES INTL (IAD)

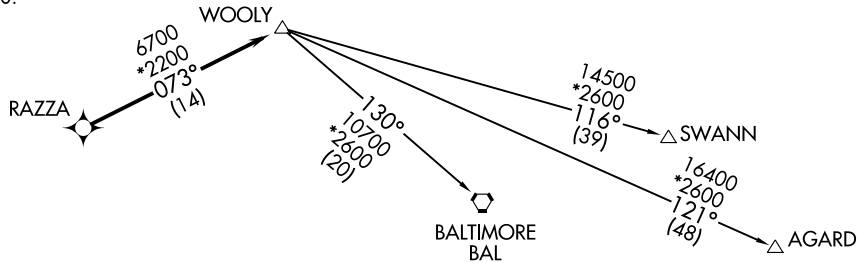
WOOLY TWO DEPARTURE (RNAV)  
(WOOLY2.WOOLY) 02DEC21

WASHINGTON, DC  
WASHINGTON DULLES INTL (IAD)  
WASHINGTON DULLES INTL (IAD)

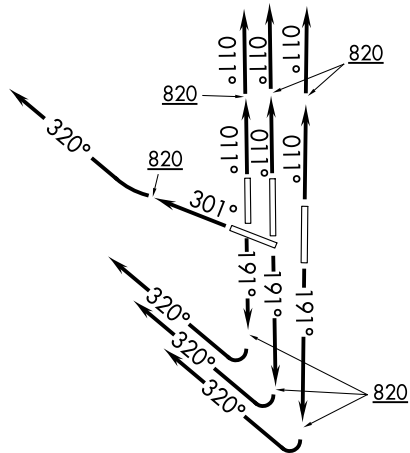
D-ATIS 134.85  
 CLNC DEL  
 135.7 317.8  
 CPDLC  
 GND CON  
 121.9 317.8 (EAST)  
 121.625 348.6 (WEST)  
 DULLES TOWER  
 120.1 317.8 (Rwy 1R/19L)  
 120.25 348.6 (Rwy 1C/19C)  
 134.425 348.6 (Rwys 1L/19R, 12/30)  
 POTOMAC DEP CON  
 125.05 350.2

TAKEOFF MINIMUMS:  
 Rwys 1L/C/R, 19L/C/R, 30:  
 Standard with minimum climb  
 of 500' per NM to 820.

**TOP ALTITUDE:**  
**3000**



NOTE: RNAV 1.  
 NOTE: DME/DME/IRU or GPS required.  
 NOTE: RADAR required.  
 NOTE: Turbojets only.



NOTE: Chart not to scale.

**DEPARTURE ROUTE DESCRIPTION**

TAKEOFF RUNWAYS 1L/C/R: Climb heading 011° to 820, then on heading 011° or as assigned by ATC, expect RADAR vectors to RAZZA, thence . . . .

TAKEOFF RUNWAYS 19L/C/R: Climb heading 191° to 820, then right turn on heading 320° or as assigned by ATC, expect RADAR vectors to RAZZA, thence . . . .

TAKEOFF RUNWAY 30: Climb heading 301° to 820, then right turn on heading 320° or as assigned by ATC, expect RADAR vectors to RAZZA, thence . . . .

. . . . on track 073° to WOOLY, then on assigned transition. Maintain 3000. Expect clearance to filed altitude within ten (10) minutes after departure.

AGARD TRANSITION (WOOLY2.AGARD)  
BALTIMORE TRANSITION (WOOLY2.BAL)  
SWANN TRANSITION (WOOLY2.SWANN)

WOOLY2.WOOLY 21336  
WOOLY TWO DEPARTURE (RNAV)

AL-5100 (FAA)  
WASHINGTON DULLES INTL (IAD)  
WASHINGTON, DC