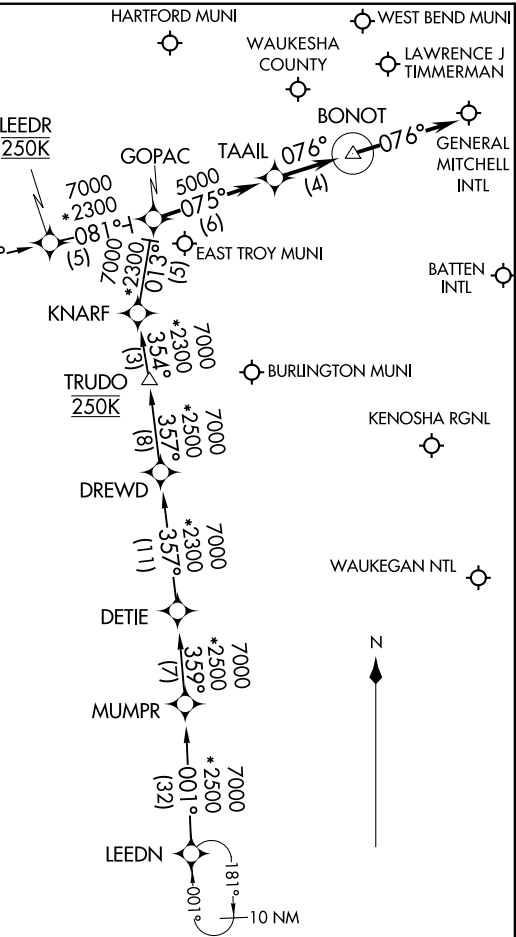
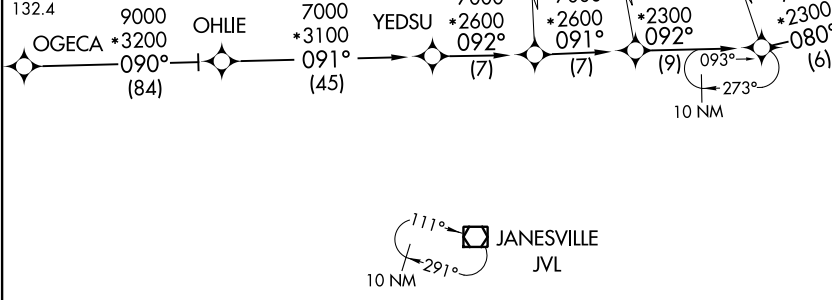


GOPAC TWO ARRIVAL (RNAV)  
[GOPAC.GOPAC2] 07DEC17

MILWAUKEE APP CON  
126.5 307.0  
ENW ATIS  
127.175  
MKE D-ATIS  
126.4  
MWC ATIS  
128.3  
UES ATIS  
118.875  
UGN ATIS  
132.4



[GOPAC.GOPAC2] 21112  
GOPAC TWO ARRIVAL (RNAV)

AL-262 (FAA)

MILWAUKEE, WISCONSIN

- NOTE: RNAV 1.
- NOTE: DME/DME/IRU or GPS required.
- NOTE: Radar required for non-GPS equipped aircraft.

NOTE: Chart not to scale.

### ARRIVAL ROUTE DESCRIPTION

LEEDN TRANSITION (LEEDN.GOPAC2):  
OGECA TRANSITION (OGECA.GOPAC2):

From GOPAC on track 075° to TAAIL, thence on track 076° to BONOT, then on track 076°. Expect radar vectors to final approach course.

MILWAUKEE, WISCONSIN