

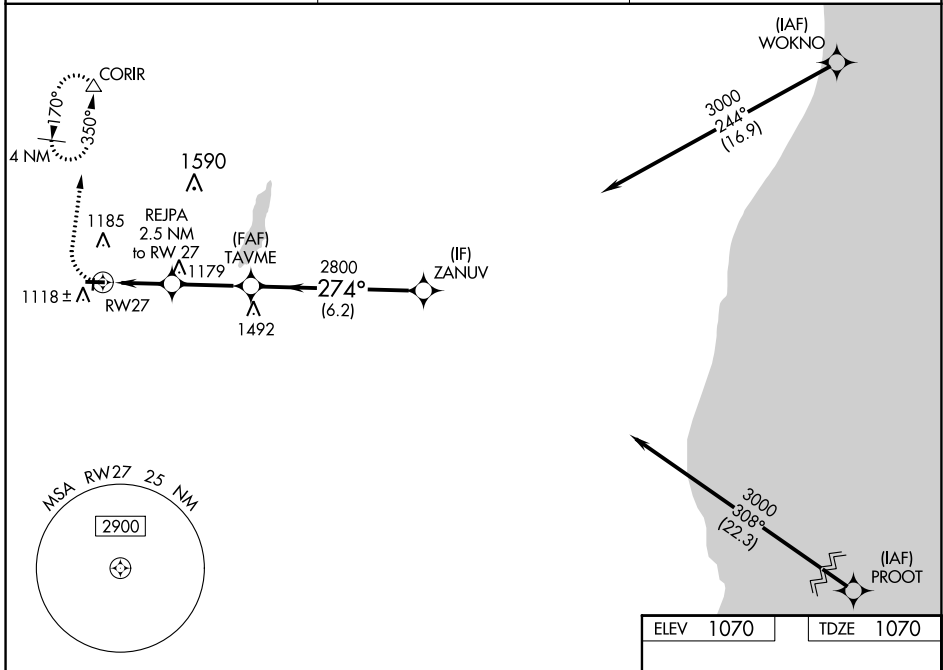
WAAS CH <b>86943</b> <b>W27A</b>	APP CRS <b>274°</b>	Rwy Idg TDZE Apf Elev	<b>3401</b> <b>1070</b> <b>1070</b>
--	------------------------	-----------------------------	---

# RNAV (GPS) RWY 27

HARTFORD MUNI (HXF)

RNP APCH.	<p>▼ Circling NA to Rwys 18 and 36. ▲ NA Rwy 27 helicopter visibility reduction below 3/4 SM NA. Baro-VNAV NA. Use West Bend altimeter setting.</p>	<p>MISSED APPROACH: Climb to 1700 then climbing right turn to 3000 direct CORIR and hold, continue climb-in-hold to 3000.</p>
-----------	---	---

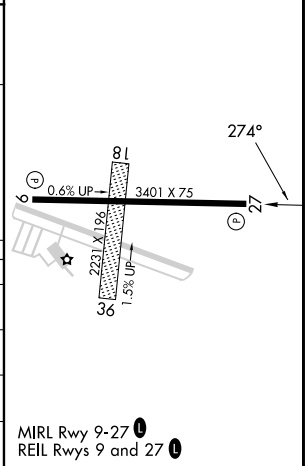
ETB AWOS-3 <b>120.0</b>	MILWAUKEE APP CON <b>125.35 307.0</b>	UNICOM <b>123.0 (CTAF) 0</b>
----------------------------	--	---------------------------------



EC-3, 22 FEB 2024 to 21 MAR 2024

EC-3, 22 FEB 2024 to 21 MAR 2024

	ELEV 1070	TDZE 1070	
	1700	3000	CORIR
	↑	↷	△
	*LNAV only.		
ZANUV	3000	274°	
TAVME	2800		
REJPA	2800		
RWY 27	*1900		
GP 3.00°			
TCH 40			
	6.2 NM	2.8 NM	2.5 NM
CATEGORY	A	B	C
LPV DA	1374-7/8	304 (400-7/8)	NA
LNAV/VNAV DA	1415-1	345 (400-1)	NA
LNAV MDA	1540-1	470 (500-1)	NA
<b>C</b> CIRCLING	1560-1	490 (500-1)	NA



MIRL Rwy 9-27 0  
REIL Rws 9 and 27 0

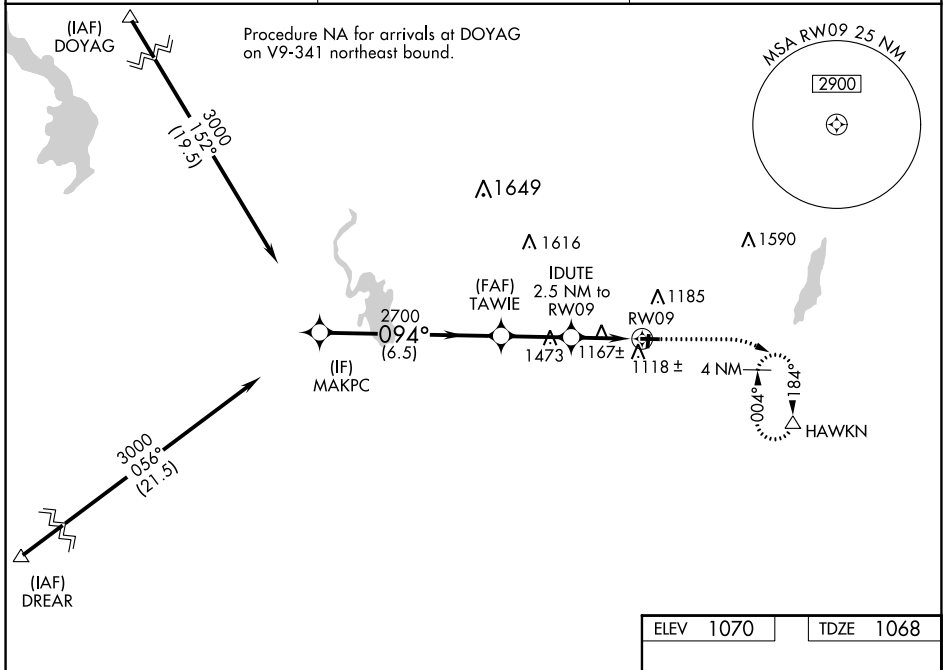
# RNAV (GPS) RWY 27

WAAS CH <b>42743</b> <b>W09A</b>	APP CRS <b>094°</b>	Rwy Idg TDZE Apf Elev	<b>3401</b> <b>1068</b> <b>1070</b>
--	------------------------	-----------------------------	---

# RNAV (GPS) RWY 9

HARTFORD MUNI (HXF)

RNP APCH.		MISSED APPROACH: Climb to 1700 then climbing right turn to 3000 direct HAWKN and hold, continue climb-in-hold to 3000.
⚠ NA Circling NA to Rwys 18 and 36. Baro-VNAV NA. Use Westbend altimeter setting.		
ETB AWOS-3 <b>120.0</b>	MILWAUKEE APP CON <b>125.35 307.0</b>	UNICOM <b>123.0 (CTAF) 0</b>



EC-3, 22 FEB 2024 to 21 MAR 2024

EC-3, 22 FEB 2024 to 21 MAR 2024

ELEV 1070	TDZE 1068
-----------	-----------

MAKPC 3000  
TAWIE 2700  
IDUTE 2.5 NM to RW09  
RW09 1900

GP 3.00° TCH 40  
\*1900  
\*LNAV only.

094°  
0.6% UP  
1.5% UP  
2231 X 18  
36  
3401 X 75  
27

MIRL Rwy 9-27 0  
REIL Rws 9 and 27 0