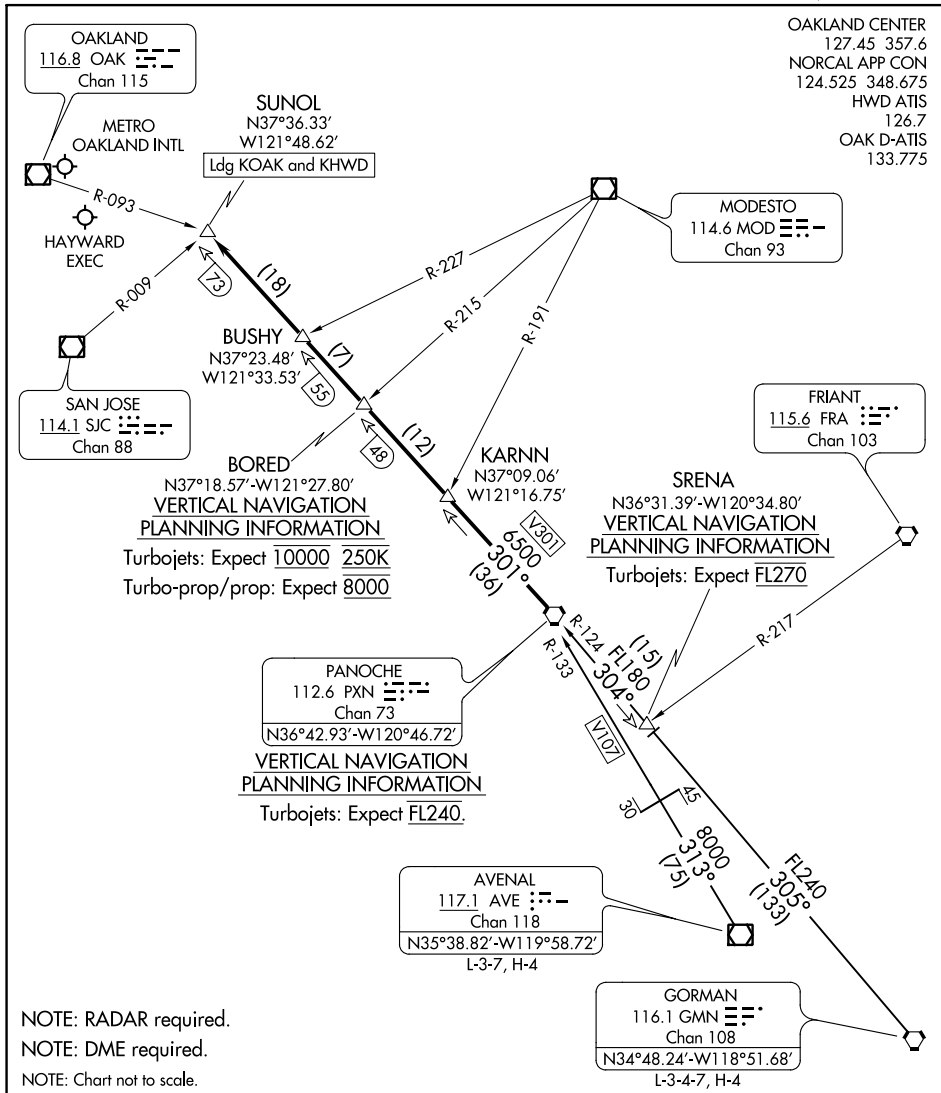


# PANOCHÉ SIX ARRIVAL

AL-294 (FAA)

OAKLAND, CALIFORNIA



SW-2, 19 MAY 2022 to 16 JUN 2022

SW-2, 19 MAY 2022 to 16 JUN 2022

NOTE: RADAR required.

NOTE: DME required.

NOTE: Chart not to scale.

## ARRIVAL ROUTE DESCRIPTION

**AVENAL TRANSITION (AVE.PXN6):** From over AVE VOR/DME on AVE R-313 and PXN R-133 to PXN VORTAC. Thence. . .

**GORMAN TRANSITION (GMN.PXN6):** From over GMN VORTAC on GMN R-305 and PXN R-124 to SRENA, then on PXN R-124 to PXN VORTAC. Thence. . .

. . . From over PXN VORTAC on PXN R-301 to SUNOL. Expect RADAR vectors to final approach course.

# PANOCHÉ SIX ARRIVAL

OAKLAND, CALIFORNIA

SHARR ONE ARRIVAL (RNAV)  
(SHARR.SHARR1) 22JUN17

ARRIVAL ROUTE DESCRIPTION

MRLET TRANSITION (MRLET.SHARR1)

RPARK TRANSITION (RPARK.SHARR1)

RUSME TRANSITION (RUSME.SHARR1)

**LANDING OAK:** From SHARR on track 232° to LOCKE, then on track 232° to cross CATTY at 8000, then on heading 280° or as assigned by ATC. Expect RADAR vectors to final approach course.

**LANDING HWD:** From SHARR on track 232° to LOCKE, then on track 232° to cross CATTY at 8000, then on heading 232° or as assigned by ATC. Expect RADAR vectors to final approach course.

NOTE: RADAR required.

NOTE: RNAV 1.

NOTE: DME/DME/IRU or GPS required.

NOTE: Turbojet and turboprop aircraft only.

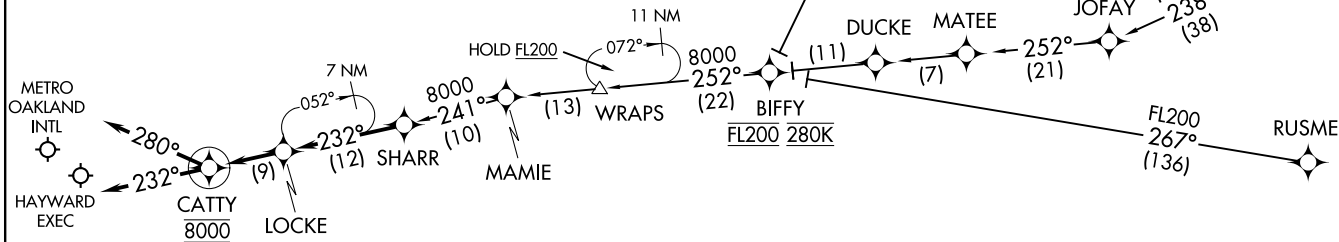
NOTE: Landing OAK expect runway 10L/R and 12 unless otherwise assigned by ATC.

NOTE: Landing HWD expect runway 28L/R unless otherwise assigned by ATC.

OAKLAND CENTER  
134.37 281.5  
NORCAL APP CON  
124.8 263.15  
HWD ATIS  
126.7  
OAK D-ATIS  
133.775  
OAKLAND GND CON  
121.75 (RWY 12-30)  
121.9 (RWYS 10L-28R, 10R-28L, 15-33)  
OAKLAND TOWER  
118.3 291.65 (Rwys 10L-28R, 10R-28L, 15-33)  
127.2 256.9 (Rwy 12-30)  
HAYWARD GND CON  
121.4  
HAYWARD TOWER★  
120.2 257.8



OAKLAND, CALIFORNIA



(SHARR.SHARR1) 21168

AL-294 (FAA)

OAKLAND, CALIFORNIA

NOTE: Chart not to scale.