

APP CRS	Rwy Idg	4100
150°	TDZE	1231
	Apt Elev	1231

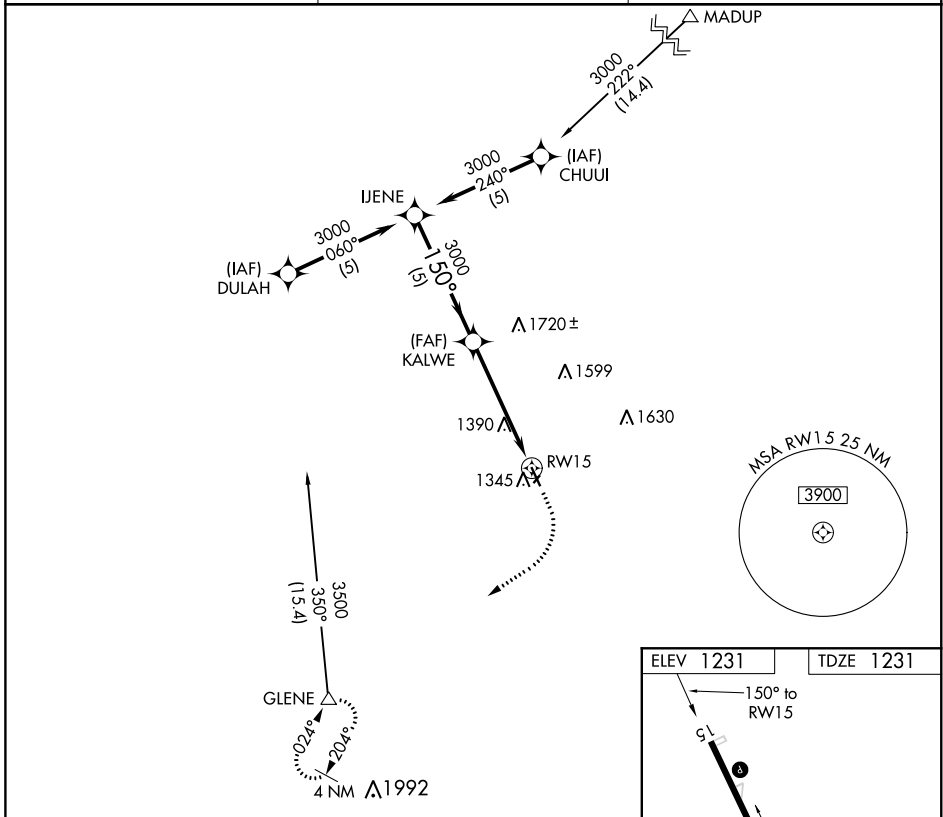
GPS RWY 15

HARLAN MUNI (HNR)

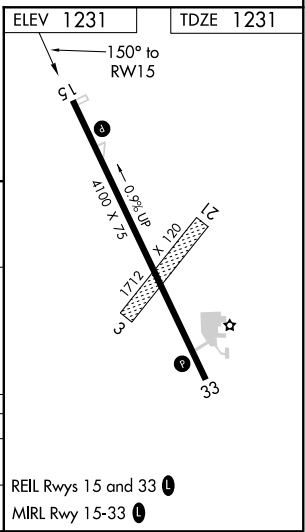
NA Procedure NA at night. Helicopter visibility reduction below 1 SM NA. Circling NA to Rwy 3 and 21.

MISSED APPROACH: Climb to 2000, then climbing right turn to 3600 direct GLENE and hold.

AWOS-3 118.325	OMAHA APP CON 124.5 263.0	UNICOM 122.8 (CTAF)
--------------------------	-------------------------------------	-------------------------------



	IJENE	KALWE	2000	3600	GLENE
	3000	3000	↑	↷	△
Procedure Turn NA	150°		VGSI and descent angle not coincident (VGSI Angle 3.00/TCH 40).		
	5 NM		3.27° TCH 34		
CATEGORY	A	B	C	D	
S-15	1780-1	549 (600-1)	NA		
CIRCLING	1780-1	549 (600-1)	NA		



NC-3, 28 JAN 2021 to 25 FEB 2021

NC-3, 28 JAN 2021 to 25 FEB 2021

APP CRS 330°	Rwy Idg 4100
	TDZE 1215
	Apt Elev 1231

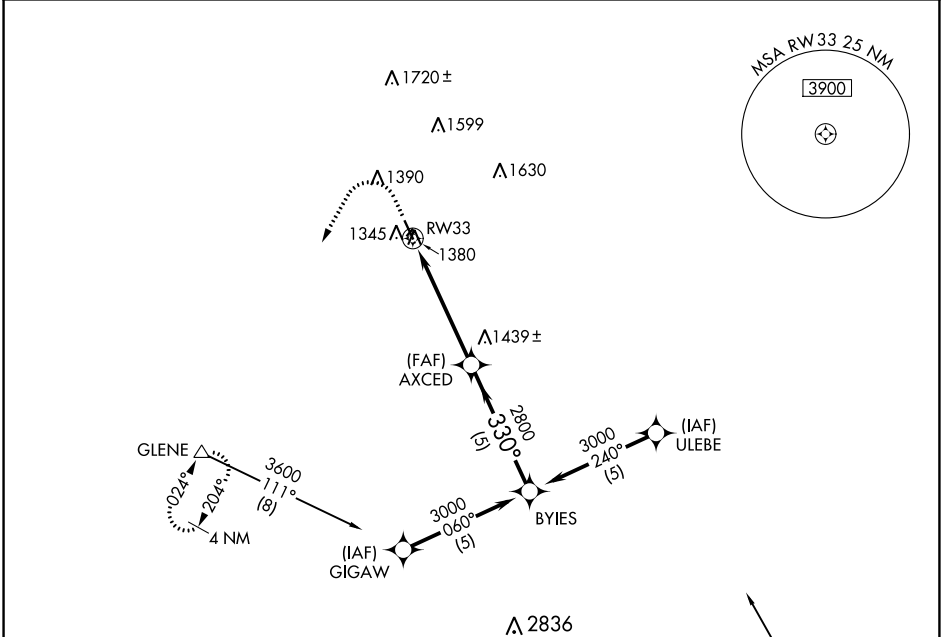
GPS RWY 33

HARLAN MUNI (HNR)

NA Procedure NA at night. Helicopter visibility reduction below 1 SM NA. Circling NA to Rwy 3 and 21.

MISSED APPROACH: Climb to 2000, then climbing left turn to 3600 direct GLENE and hold.

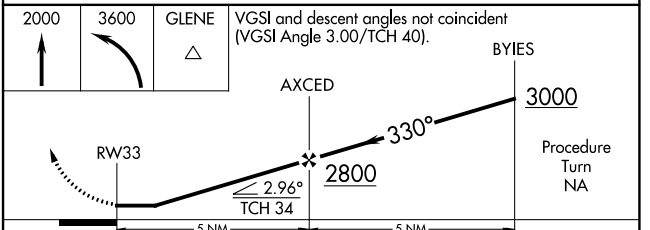
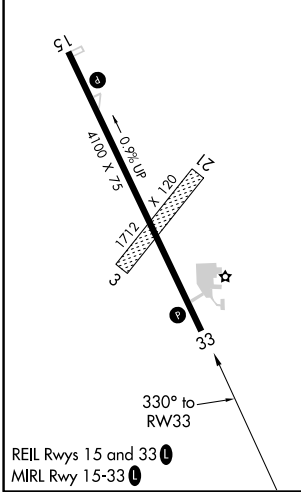
AWOS-3 118.325	OMAHA APP CON 124.5 263.0	UNICOM 122.8 (CTAF)
--------------------------	-------------------------------------	-------------------------------



NC-3, 28 JAN 2021 to 25 FEB 2021

NC-3, 28 JAN 2021 to 25 FEB 2021

ELEV 1231	TDZE 1215
-----------	-----------



CATEGORY	A	B	C	D
S-33	1640-1	425 (500-1)		NA
CIRCLING	1780-1	549 (600-1)		NA