

APP CRS <b>098°</b>	Rwy Idg TDZE Apt Elev	<b>5003</b> <b>806</b> <b>806</b>
------------------------	-----------------------------	---

# RNAV (GPS) RWY 10

HUNTINGTON MUNI (HHG)

RNP APCH - GPS.

**⚠** Rwy 10 helicopter visibility reduction below 3/4 SM NA.

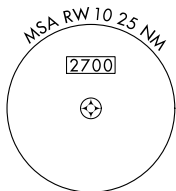
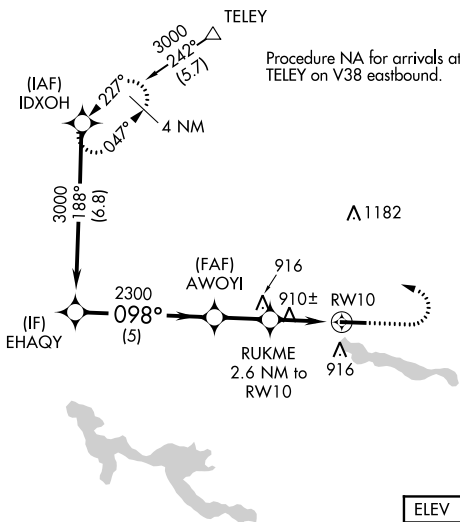
**MISSED APPROACH:** Climb to 1700 then climbing left turn to 2600 direct IDXOH and hold.

AWOS-3PT  
**126.575**

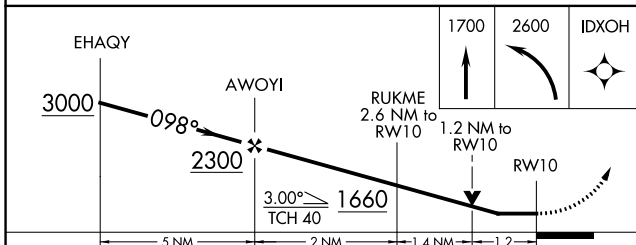
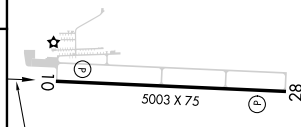
FORT WAYNE APP CON  
**127.2 284.6**

UNICOM  
**122.8 (CTAF) 0**

1648 **⚠**



ELEV 806	TDZE 806
----------	----------



CATEGORY	A	B	C	D
LNNAV MDA	1220-1 414 (500-1)		1220-1 1/8 414 (500-1 1/8)	
<b>C</b> CIRCLING	1300-1 494 (500-1)		1460-1 3/4 654 (700-1 3/4)	1540-2 1/4 734 (800-2 1/4)

MIRL Rwy 10-28 **0**  
REIL Rws 10 and 28 **0**

APP CRS <b>278°</b>	Rwy Idg TDZE Apt Elev	<b>5003</b> <b>806</b> <b>806</b>
------------------------	-----------------------------	---

# RNAV (GPS) RWY 28

HUNTINGTON MUNI (HHG)

RNP APCH - GPS

**⚠** Rwy 28 helicopter visibility reduction below 3/4 SM NA.

**MISSED APPROACH:** Climb to 1700 then climbing right turn to 2600 direct IDXOH and hold.

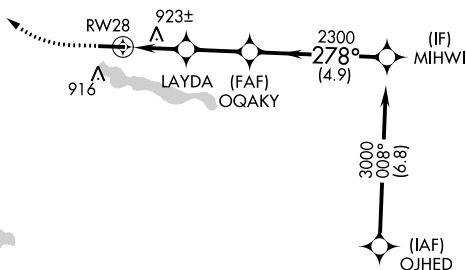
AWOS-3PT  
**126.575**

FORT WAYNE APP CON  
**127.2 284.6**

UNICOM  
**122.8 (CTAF) 0**

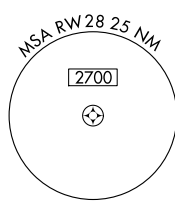


△ 1182

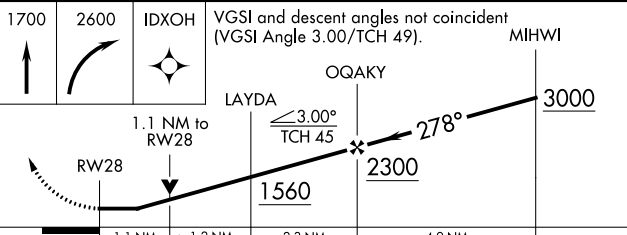


△ 1397

Procedure NA for arrivals at AJAYS on V221 southbound.



ELEV 806	TDZE 806
----------	----------



CATEGORY	A	B	C	D
LNAV MDA	1200-1	394 (400-1)	1200-1½	394 (400-1½)
<b>C</b> CIRCLING	1300-1	494 (500-1)	1460-1¾ 654 (700-1¾)	1540-2¼ 734 (800-2¼)

MIRL Rwy 10-28 **0**  
REIL Rwy 10 and 28 **0**

EC-2, 19 MAY 2022 to 16 JUN 2022

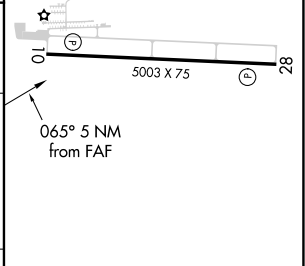
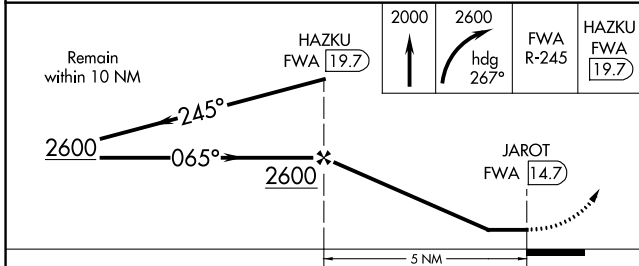
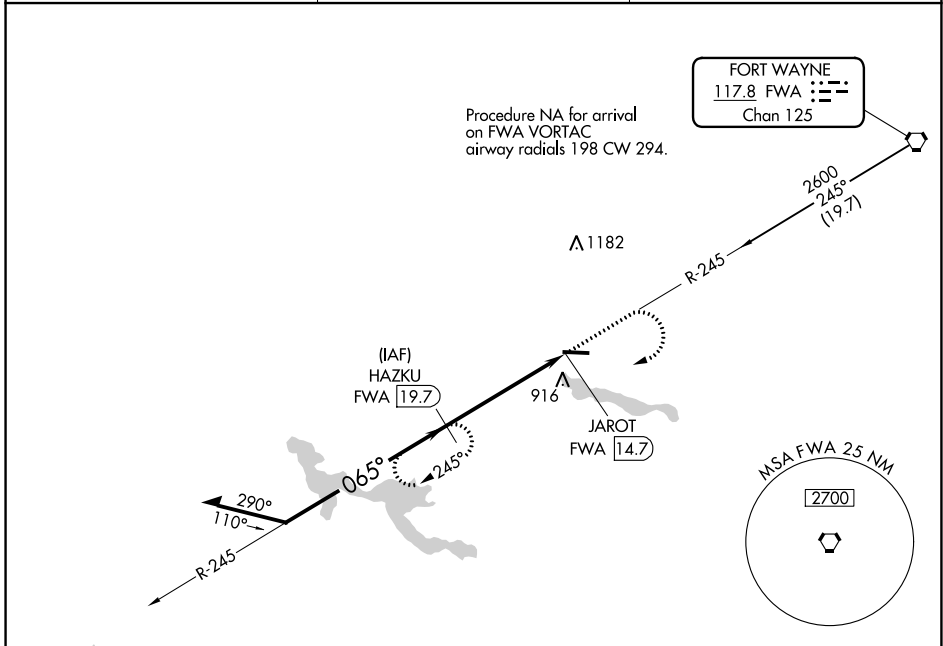
EC-2, 19 MAY 2022 to 16 JUN 2022

VORTAC FWA <b>117.8</b> Chan <b>125</b>	APP CRS <b>065°</b>	Rwy Idg TDZE Apt Elev <b>806</b>	<b>N/A</b> <b>N/A</b> <b>806</b>
---	------------------------	---	--

**VOR-A**  
HUNTINGTON MUNI (HHG)

DME required.	MISSED APPROACH: Climb to 2000 then climbing right turn to 2600 on heading 267° and on FWA VORTAC R-245 to HAZKU/19.7 DME and hold.
---------------	---

AWOS-3PT <b>126.575</b>	FORT WAYNE APP CON <b>127.2 284.6</b>	UNICOM <b>122.8 (CTAF) 0</b>
----------------------------	--	---------------------------------



CATEGORY	A	B	C	D
<b>CIRCLING</b>	1300-1	494 (500-1)	1460-1¾ 654 (700-1¾)	1540-2¼ 734 (800-2¼)

MIRL Rwy 10-28  
REIL Rwy 10 and 28

EC-2, 19 MAY 2022 to 16 JUN 2022

EC-2, 19 MAY 2022 to 16 JUN 2022