

CONRA THREE DEPARTURE
(CONRA3, CONRA) 30NOV23

ROBERT GRAY AAF (GRK)
FORT CAVAZOS (KILLEEN), TEXAS

ATIS
124.9
CLNC DEL
126.2 251.1
GND CON
121.8 279.5
GRAY TOWER
120.75 (CTAF) 285.5
GRAY DEP CON
120.075 323.15

**TOP ALTITUDE:
3500**

RADAR required.



DEPARTURE ROUTE DESCRIPTION

TAKEOFF RUNWAYS 15, 33: Climb on assigned heading for RADAR vectors to CONRA INT, maintain 3500. Thence. . .

. . . (transition), expect filed altitude 10 minutes after departure.

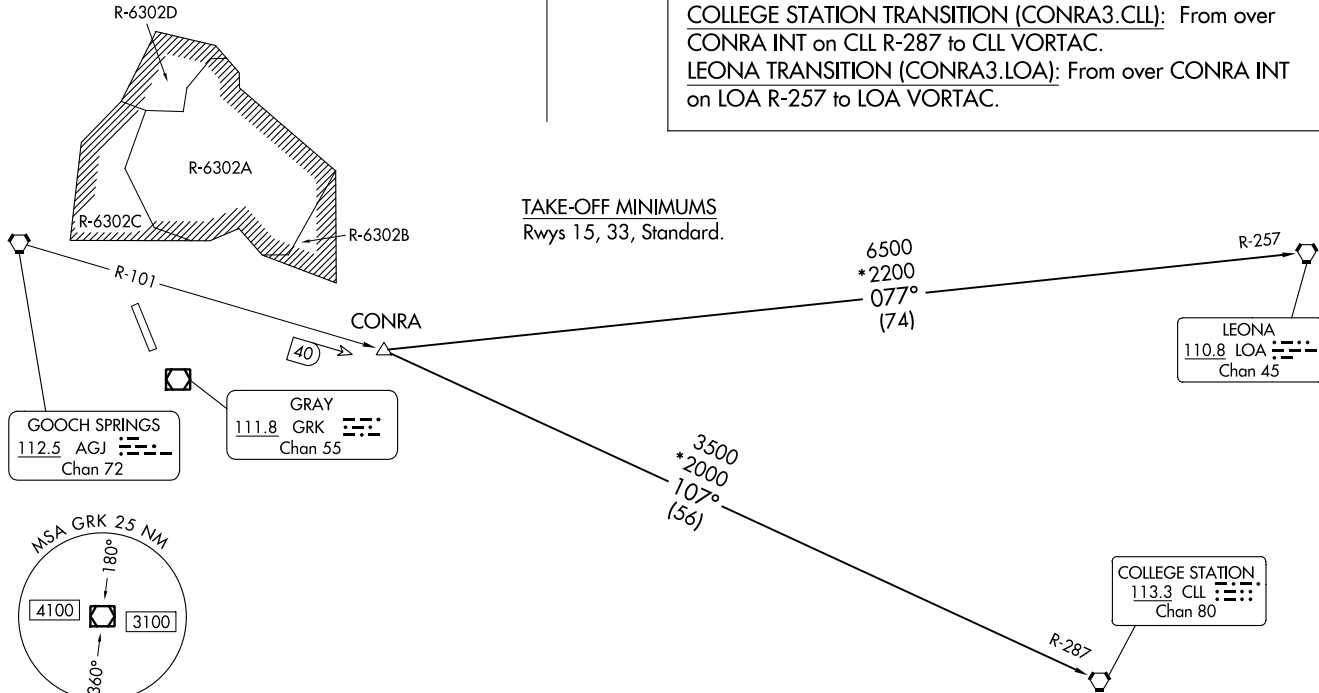
COLLEGE STATION TRANSITION (CONRA3.CLL): From over CONRA INT on CLL R-287 to CLL VORTAC.

LEONA TRANSITION (CONRA3.LOA): From over CONRA INT on LOA R-257 to LOA VORTAC.

N



TAKE-OFF MINIMUMS
Rwys 15, 33, Standard.



NOTE: Chart not to scale.

(CONRA3, CONRA) 23334
CONRA THREE DEPARTURE

AL-906 (FAA)

ROBERT GRAY AAF (GRK)
FORT CAVAZOS (KILLEEN), TEXAS

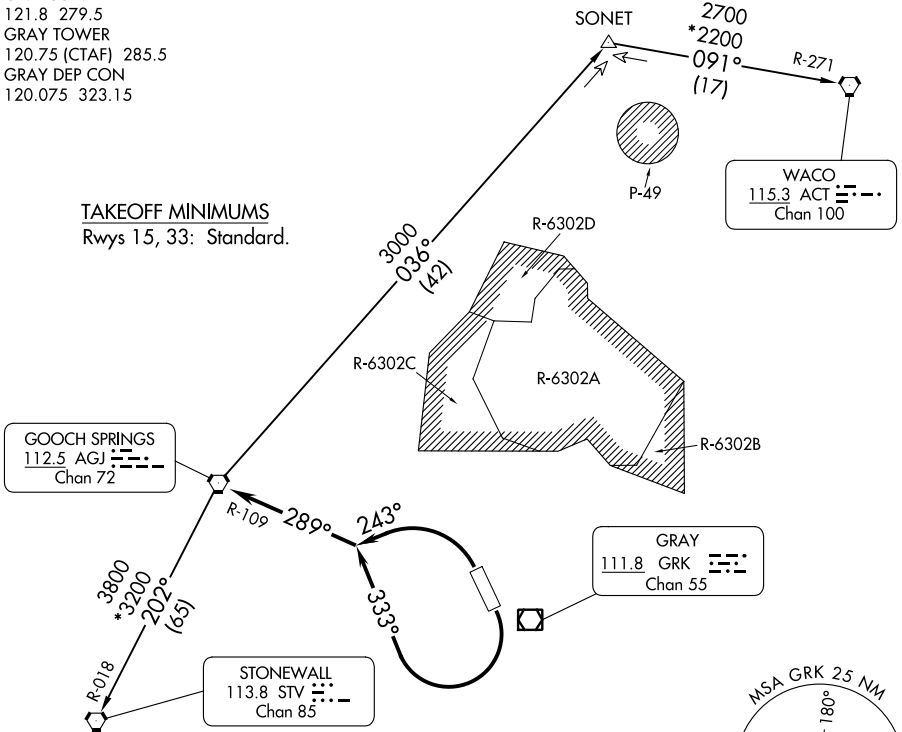
LAMPS EIGHT DEPARTURE

ATIS
124.9
CLNC DEL
126.2 251.1
GND CON
121.8 279.5
GRAY TOWER
120.75 (CTAF) 285.5
GRAY DEP CON
120.075 323.15

RADAR required.

**TOP ALTITUDE:
ASSIGNED BY ATC**

TAKEOFF MINIMUMS
Rwys 15, 33: Standard.



NOTE: WACO TRANSITION for aircraft inbound to terminal area airports.

NOTE: Chart not to scale.



DEPARTURE ROUTE DESCRIPTION

TAKEOFF RUNWAY 15: Climbing right turn heading 333° (to assigned altitude) to intercept and proceed on AGJ R-109. Thence . . .

TAKEOFF RUNWAY 33: Climbing left turn heading 243° (to assigned altitude) to intercept and proceed on AGJ R-109. Thence . . .

. . . on (transition) or (assigned route). Maintain ATC assigned altitude.

STONEWALL TRANSITION (LAMPS8.STV): From over AGJ VORTAC on AGJ R-202 and STV R-018 to STV VORTAC.

WACO TRANSITION (LAMPS8.ACT): From over AGJ VORTAC on AGJ R-036 to SONET INT, then on ACT R-271 to ACT VORTAC.