

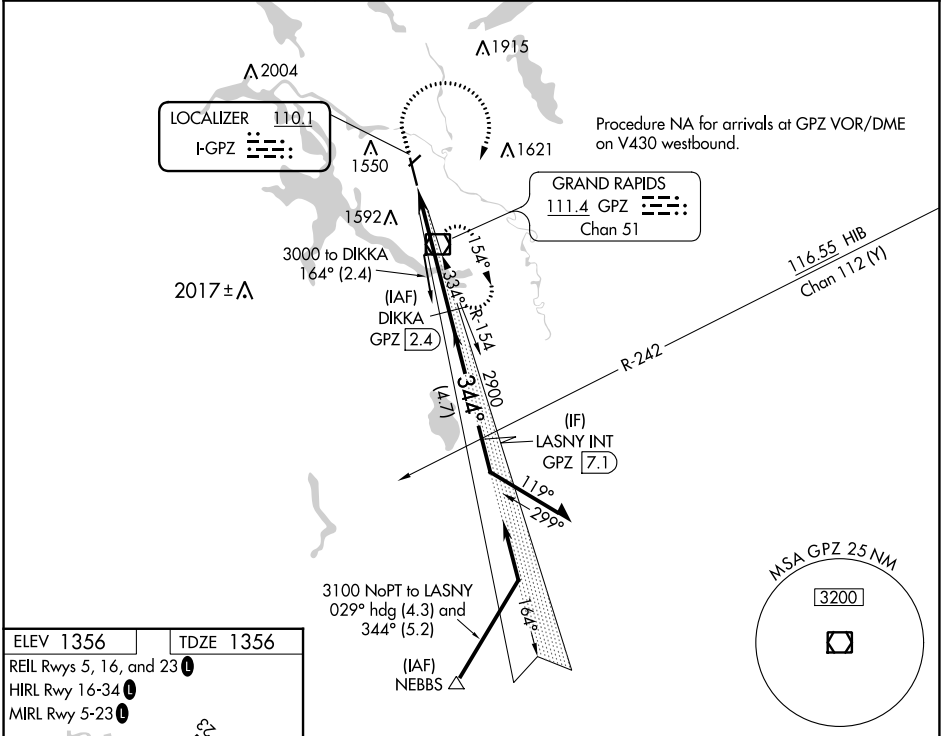
LOC I-GPZ 110.1	APP CRS 344°	Rwy Idg 5756	TDZE 1356
		Apt Elev 1356	

ILS or LOC RWY 34

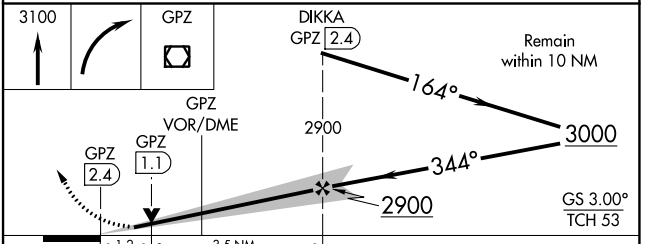
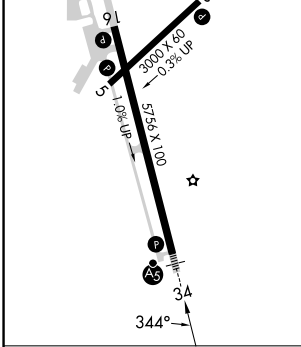
GRAND RAPIDS/ITASCA COUNTY-GORDON NEWSTROM FLD (GPZ)

DME required for LOC only.		MALSR	MISSED APPROACH: Climb to 3100 then right turn direct GPZ VOR/DME and hold.
▼	Circling to Rwy 5, 23 NA at night.		
▲	Circling NA for Cat D east of Rwy 16-34.		

AWOS-3PT 118.425	MINNEAPOLIS CENTER 127.9 281.45	UNICOM 122.8 (CTAF)
----------------------------	---	-------------------------------



ELEV 1356	TDZE 1356
REIL Rwys 5, 16, and 23	
HIRL Rwy 16-34	
MIRL Rwy 5-23	



CATEGORY	A	B	C	D
S-ILS 34	1556-½ 200 (200-½)			
S-LOC 34	1800-½ 444 (500-½)	1800-¾ 444 (500-¾)		
CIRCLING	1900-1 544 (600-1)	1900-1½ 544 (600-1½)	1960-2 604 (700-2)	

NC-1, 22 FEB 2024 to 21 MAR 2024

NC-1, 22 FEB 2024 to 21 MAR 2024

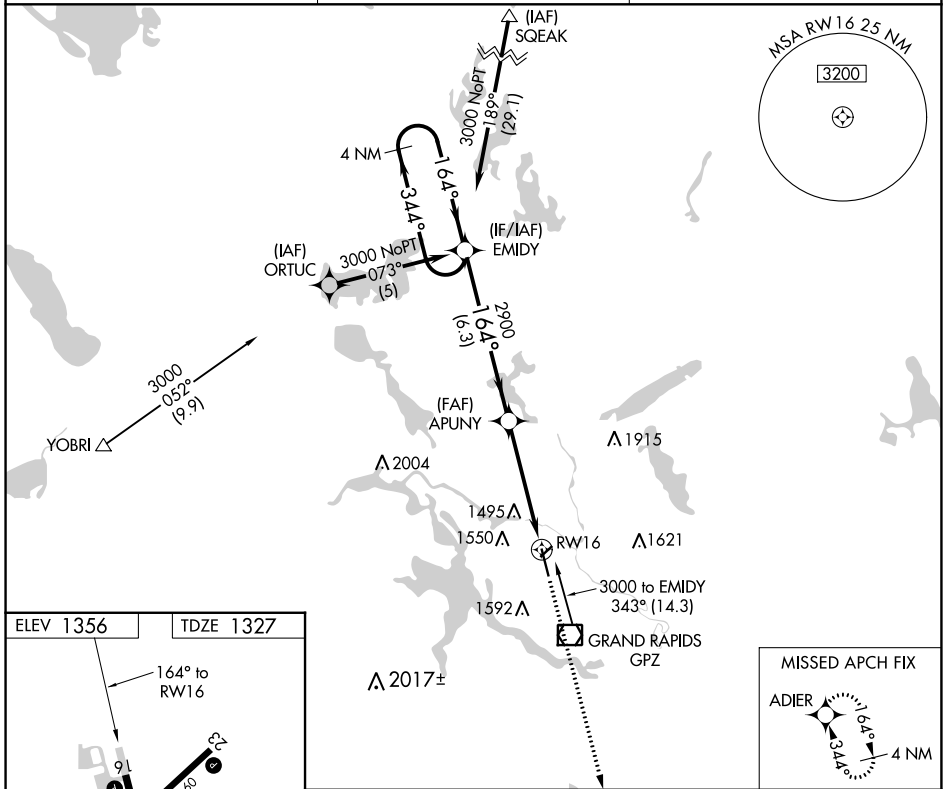
APP CRS	Rwy Idg	5756
164°	TDZE	1327
	Apt Elev	1356

RNAV (GPS) RWY 16

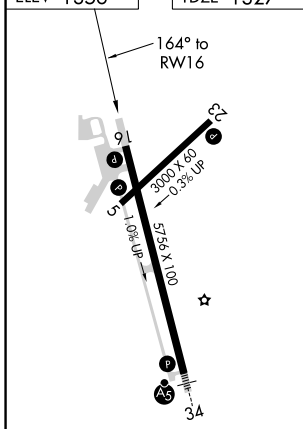
GRAND RAPIDS/ITASCA COUNTY-GORDON NEWSTROM FLD (GPZ)

RNP APCH.	MISSED APPROACH: Climb to 2900 direct ADIER and hold.
<p>⚠ Circling Rwy 5 NA at night. Circling NA for Cat D east of Rwy 16-34.</p> <p>⚠ When local altimeter setting not received, use Hibbing altimeter setting and increase all MDAs 80 feet; increase LNAV Cat C visibility 1/8 SM and Circling Cats C/D visibility 1/4 SM.</p>	

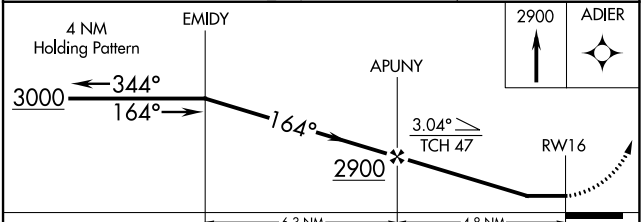
AWOS-3PT 118.425	MINNEAPOLIS CENTER 127.9 281.45	UNICOM 122.8 (CTAF)
----------------------------	---	-------------------------------



ELEV 1356	TDZE 1327
-----------	-----------



- MIRL Rwy 5-23
- HIRL Rwy 16-34
- REIL Rws 5, 16, and 23



CATEGORY	A	B	C	D
LNAV MDA	1760-1	433 (500-1)	1760-1¼ 433 (500-1¼)	1760-1½ 433 (500-1½)
C CIRCLING	1900-1	544 (600-1)	1900-1½ 544 (600-1½)	2000-2 644 (700-2)

RNAV (GPS) RWY 16

NC-1, 22 FEB 2024 to 21 MAR 2024

NC-1, 22 FEB 2024 to 21 MAR 2024

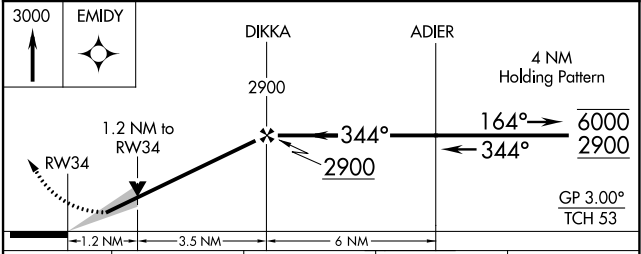
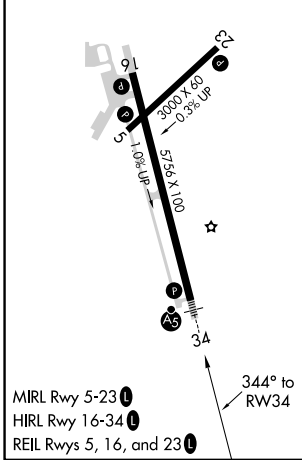
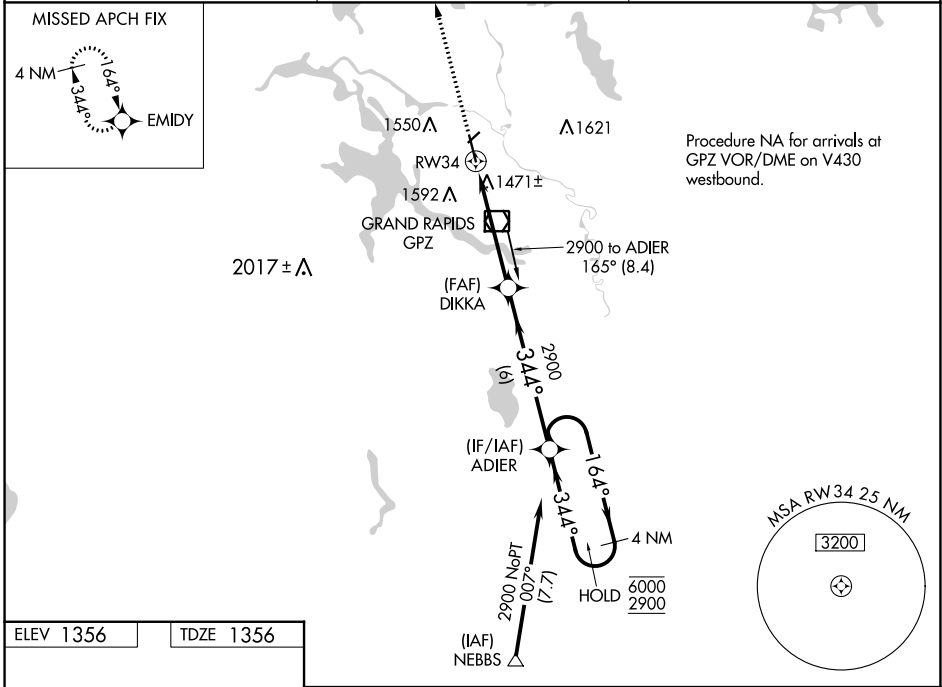
WAAS CH 86412 W34A	APP CRS 344°	Rwy Idg TDZE Apt Elev	5756 1356 1356
--	------------------------	-----------------------------	---

RNAV (GPS) RWY 34

GRAND RAPIDS/ITASCA COUNTY-GORDON NEWSTROM FLD (GPZ)

RNP APCH.	MALSR	MISSED APPROACH: Climb to 3000 direct EMIDY and hold.
<p>⚠ Circling to Rwy 5, 23 NA at night. Circling NA for Cat D east of Rwy 16-34.</p> <p>⚠ For uncompensated Baro-VNAV systems, LNAV/VNAV NA below -17°C or above 54°C.</p>		

AWOS-3PT 118.425	MINNEAPOLIS CENTER 127.9 281.45	UNICOM 122.8 (CTAF)
----------------------------	---	-------------------------------



CATEGORY	A	B	C	D
LPV DA		1556-1/2	200 (200-1/2)	
LNAV/VNAV DA		1747-5/8	391 (400-5/8)	
LNAV MDA	1800-1/2	444 (500-1/2)	1800-7/8	444 (500-7/8)
C CIRCLING	1900-1	544 (600-1)	1900-1 1/2 544 (600-1 1/2)	1960-2 604 (700-2)

RNAV (GPS) RWY 34

NC-1, 22 FEB 2024 to 21 MAR 2024


NC-1, 22 FEB 2024 to 21 MAR 2024

VOR/DME GPZ	APP CRS	Rwy Idg	5756
111.4	334°	TDZE	1356
Chan 51		Apt Elev	1356

VOR RWY 34

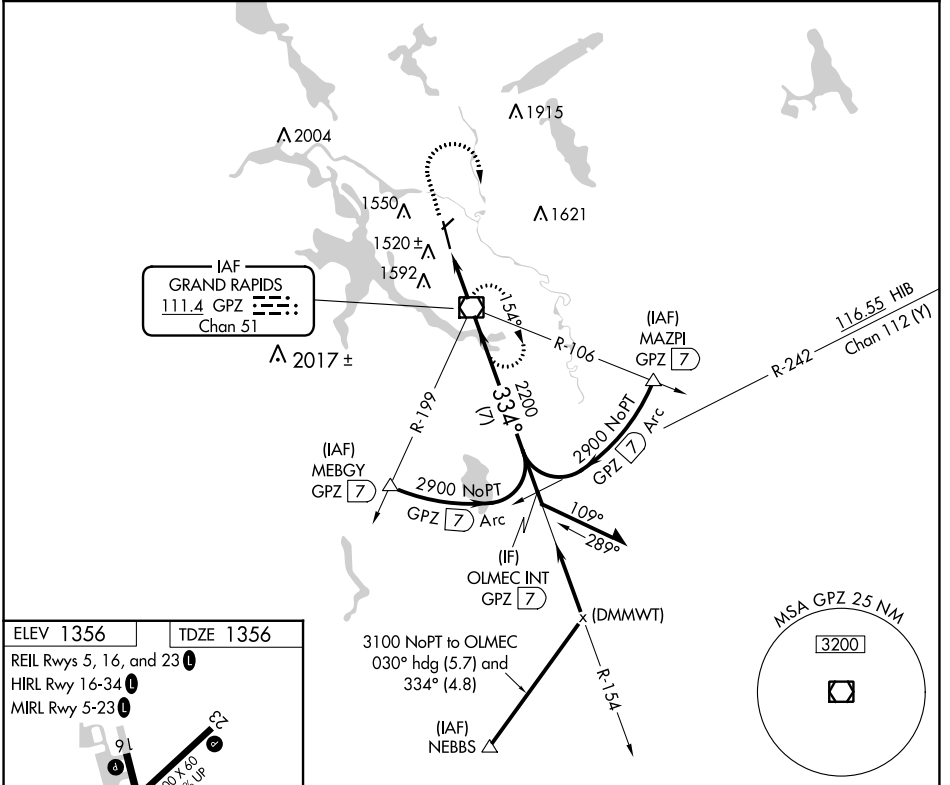
GRAND RAPIDS/ITASCA COUNTY-GORDON NEWSTROM FLD (GPZ)

⚠ VDP NA when using Hibbing's altimeter setting. Circling Rwy 5 NA at night. Circling NA for Cat D east of Rwy 16-34. When local altimeter setting not received, use Hibbing altimeter setting and increase all MDAs 80 feet, increase S-34 Cat C visibility 1/8 SM and Circling Cats C/D visibility 1/4 SM.

MALSR 

MISSED APPROACH: Climb to 3100 then right turn direct GPZ VOR/DME and hold.

AWOS-3PT 118.425	MINNEAPOLIS CENTER 127.9 281.45	UNICOM 122.8 (CTAF) 0
----------------------------	---	---------------------------------

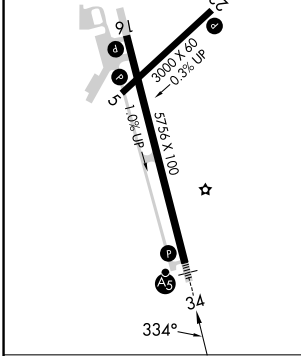


NC-1, 22 FEB 2024 to 21 MAR 2024

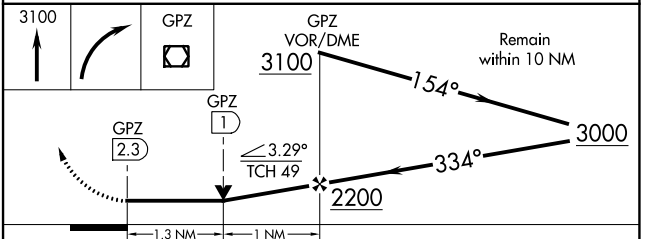
NC-1, 22 FEB 2024 to 21 MAR 2024

ELEV 1356 TDZE 1356

REIL Rwy 5, 16, and 23
 HIRL Rwy 16-34
 MIRL Rwy 5-23



FAF to MAP 2.3 NM					
Knots	60	90	120	150	180
Min:Sec	2:18	1:32	1:09	0:55	0:46



CATEGORY	A	B	C	D
S-34	1800-1/2 444 (500-1/2)		1800-7/8 444 (500-7/8)	1800-1 444 (500-1)
C CIRCLING	1900-1 544 (600-1)		1900-1 1/2 544 (600-1 1/2)	2000-2 644 (700-2)

VOR RWY 34