

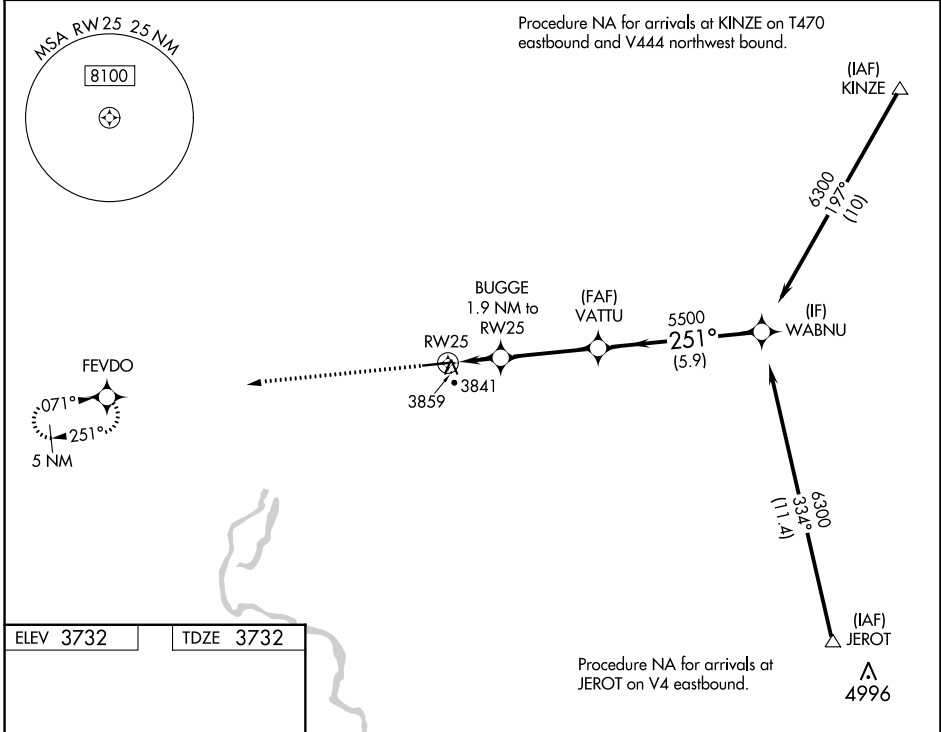
WAAS CH 45909 W25A	APP CRS 251°	Rwy Idg 5371 TDZE 3732 Apt Elev 3732
--	------------------------	---

RNAV (GPS) RWY 25

GOODING MUNI (GNG)

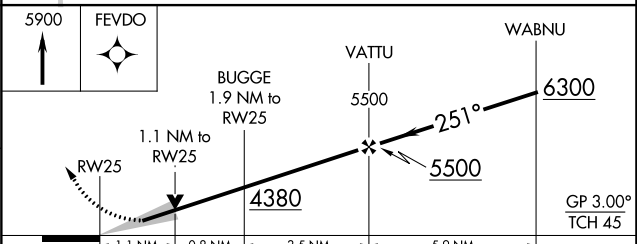
RNP APCH - GPS.	MISSED APPROACH: Climb to 5900 direct FEVDO and hold.
<p>▼ For uncompensated Baro-VNAV systems, LNAV/VNAV NA below -22°C or above 54°C.</p>	

AWOS-3PT 124.175	SALT LAKE CENTER 118.05 363.0	UNICOM 122.8 (CTAF) 0
----------------------------	---	---------------------------------



ELEV 3732 TDZE 3732

REIL Rwy 7 0
MIRL Rwy 7-25 0



CATEGORY	A	B	C	D
LPV DA		3982- ³ / ₄	250 (300- ³ / ₄)	
LNAV/VNAV DA		4020- ⁷ / ₈	288 (300- ⁷ / ₈)	
LNAV MDA	4120-1	388 (400-1)	4120-1 ¹ / ₈	388 (400-1 ¹ / ₈)

NW-1, 22 FEB 2024 to 21 MAR 2024

NW-1, 22 FEB 2024 to 21 MAR 2024

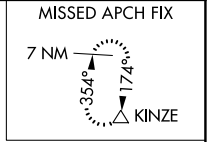
WAAS CH 53709 W07A	APP CRS 071°	Rwy Idg TDZE Apt Elev	5371 3702 3732
--	------------------------	-----------------------------	---

RNAV (GPS) RWY 7

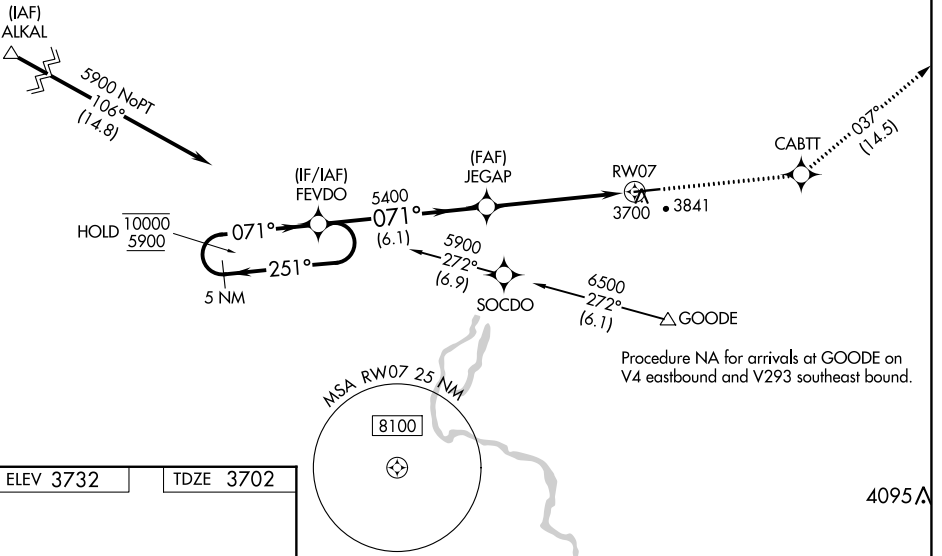
GOODING MUNI (GNG)

RNP APCH - GPS.	MISSED APPROACH: Climb to 7400 direct CABTT and on track 037° to KINZE and hold.
<p>▼ For uncompensated Baro-VNAV systems, procedure NA below -22°C or above 54°C.</p> <p>▲</p>	

AWOS-3PT 124.175	SALT LAKE CENTER 118.05 363.0	UNICOM 122.8 (CTAF) 0
----------------------------	---	---------------------------------



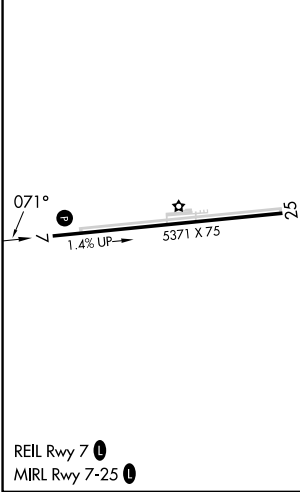
Procedure NA for arrivals at ALKAL on V253 northwest bound and T470 westbound.



NW-1, 22 FEB 2024 to 21 MAR 2024

NW-1, 22 FEB 2024 to 21 MAR 2024

ELEV 3732	TDZE 3702
-----------	-----------



VGSi and RNAV glidepath not coincident (VGSi Angle 2.75/TCH 40).		7400	CABTT	KINZE
5 NM Holding Pattern		↑	✦	tr 037°
FEVDO		JEGAP		
10000 ← 251°		5400	0.9 NM to RWY07	
5900 → 071°		5400		
GP 3.00° TCH 45		6.1 NM	4.4 NM	0.9
CATEGORY	A	B	C	D
LPV DA		3952-¾	250 (300-¾)	
LNNAV/VNAV DA		3952-¾	250 (300-¾)	
LNNAV MDA	3960-1	258 (300-1)	3960-¾	258 (300-¾)