

WAAS CH <b>72918</b> <b>W35A</b>	APP CRS <b>350°</b>	Rwy Idg TDZE Apt Elev	<b>5002</b> <b>3278</b> <b>3315</b>
--	------------------------	-----------------------------	---

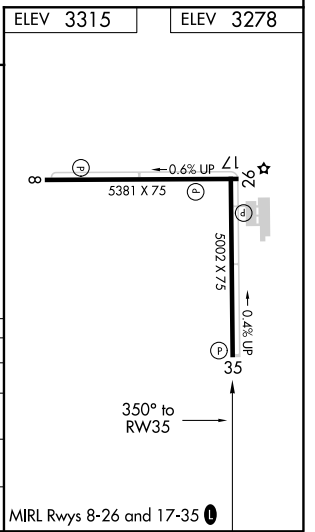
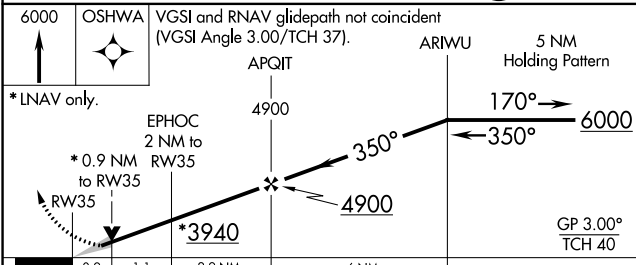
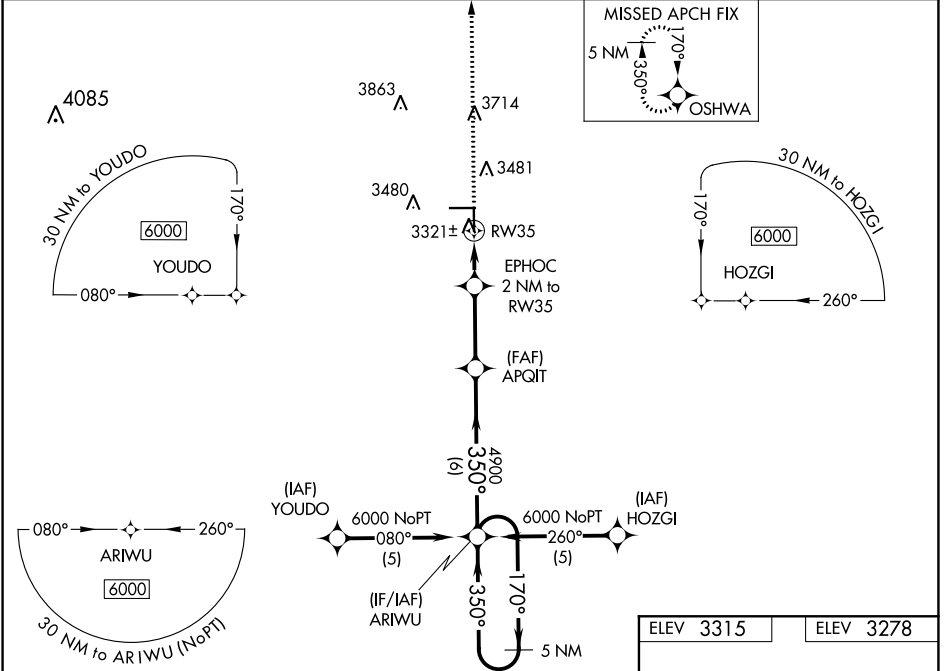
# RNAV (GPS) RWY 35

GAINES COUNTY (GNC)

**⚠** For uncompensated Baro-VNAV systems, LNAV/VNAV NA below -21°C (-5°F) or above 54°C (130°F).  
**⚠** DME/DME RNP-0.3 NA. When local altimeter setting not received, use Midland Intl Air and Space Port altimeter setting and increase all DA 177 feet, all MDA 180 feet, increase LPV all Cats and LNAV Cat C visibility ½ mile, LNAV/VNAV all Cats and Circling Cat C visibility ¾ mile. Baro-VNAV and VDP NA when using Midland Intl Air and Space Port altimeter setting.

**MISSED APPROACH:** Climb to 6000 direct OSHWA and hold, continue climb-in-hold to 6000.

AWOS-3 <b>118.075</b>	FORT WORTH CENTER <b>132.6 269.05</b>	UNICOM <b>122.8</b> (CTAF) <b>①</b>
--------------------------	--	--



CATEGORY	A	B	C	D
LPV DA	3528-1		250 (300-1)	NA
LNAV/VNAV DA	3591-1¼		313 (300-1¼)	NA
LNAV MDA	3580-1		302 (300-1)	NA
CIRCLING	3840-1		525 (600-1)	3880-1½ 565 (600-1½)

SC-2, 09 SEP 2021 to 07 OCT 2021

SC-2, 09 SEP 2021 to 07 OCT 2021