

# GRAND JUNCTION SEVEN DEPARTURE

ATIS  
118.55  
GND CON  
121.7 257.8  
GRAND JUNCTION TOWER\*  
118.1 257.8  
DENVER DEP CON\*  
119.7 317.4  
UNICOM  
122.95

**TOP ALTITUDE:**  
**6000**

MEEKER  
115.2 EKR  
Chan 99

SQUAT  
N39°18.64'  
W108°13.36'  
L-9  
12000

RED TABLE  
113.0 DBL  
Chan 77

GRAND JUNCTION  
112.4 JNC  
Chan 71  
N39°03.57'-W108°47.55'

PACES  
N39°09.95'  
W108°16.73'  
L-9  
13000

HONKR  
N39°01.47'  
W108°25.90'  
11000

DIRDY  
N38°55.80'  
W107°30.91'  
L-9, H-3

BRICK  
N38°44.99'  
W108°17.36'  
L-9

NOTE: BRICK and DIRDY TRANSITIONS:  
DME required.

### TAKEOFF MINIMUMS

Rwy 4: NA - Obstacles.

Rwy 22: NA - Obstacles, facility reception (JNC VOR/DME).

Rwy 11: Standard with minimum climb of 300' per NM to 9300.

Rwy 29: Standard with minimum climb of 300' per NM to 8300.

NOTE: Chart not to scale.

### DEPARTURE ROUTE DESCRIPTION

TAKEOFF RUNWAY 11: Climb heading 112° to 6000, then climbing right turn direct JNC VOR/DME, thence. . . .

TAKEOFF RUNWAY 29: Climb heading 292° to 6000, then climbing left turn direct JNC VOR/DME, thence. . . .

. . . . on transition/route.

BRICK TRANSITION (JNC7.BRICK): From over JNC VOR/DME via JNC R-113 to BRICK/JNC 30 DME.

DIRDY TRANSITION (JNC7.DIRDY): From over JNC VOR/DME via JNC R-082 to DIRDY INT/JNC 60 DME.

PACES TRANSITION (JNC7.PACES): From over JNC VOR/DME via JNC R-060 to PACES INT/JNC 25 DME.

SQUAT TRANSITION (JNC7.SQUAT): From over JNC VOR/DME via JNC R-045 to SQUAT INT/JNC 31 DME.

# GRAND JUNCTION SEVEN DEPARTURE

SW-1, 30 JAN 2020 to 27 FEB 2020

SW-1, 30 JAN 2020 to 27 FEB 2020

(GRAND1, GRAND) 16035

GRAND MESA ONE DEPARTURE

AL-634 (FAA)

GRAND JUNCTION RGNL (GJT)  
GRAND JUNCTION, COLORADO

ATIS 118.55  
CLNC DEL  
121.7 257.8  
GND CON  
121.7 257.8  
GRAND JUNCTION TOWER\*  
118.1 (CTAF) 257.8  
DENVER DEP CON\*  
119.7 317.4

FALCON  
116.3 FGF  
Chan 110  
N39°41.41'-W104°37.26'  
L-10, H-3-5

MILE HIGH  
114.7 DVV  
Chan 94  
N39°53.68'-W104°37.46'  
L-10, H-3-5

RED TABLE  
113.0 DBL  
Chan 77  
N39°26.36'-W106°53.68'  
L-9, H-3

BLUE MESA  
114.9 HBU  
Chan 96  
N38°27.13'-W107°02.38'  
L-9, H-3

MEEKER  
115.2 EKR  
Chan 99  
N40°04.05'-W107°55.50'  
L-9-11, H-3

VERNAL  
108.2 VEL  
Chan 19  
N40°22.73'  
W109°29.60'  
L-9-11

RIFLE  
110.6 RIL  
Chan 43  
N39°31.70'-W107°43.18'  
L-9, H-3

DIRDY  
N38°55.80'  
W107°30.91'  
L-9

MONTROSE  
117.1 MTJ  
Chan 118  
N38°30.39'-W107°53.96'  
L-9, H-3

CONES  
110.2 ETL  
Chan 39  
N38°02.42'  
W108°15.52'  
L-9

RATTLESNAKE  
115.3 RSK  
Chan 100  
N36°44.90'-W108°05.94'  
L-8, H-4

GRAND JUNCTION  
112.4 JNC  
Chan 71  
N39°03.57'-W108°47.56'  
L-9, H-3

MOAB  
109.8 OAB  
Chan 35  
N38°45.37'  
W109°44.96'  
L-9

DOVE CREEK  
114.6 DVC  
Chan 93  
N37°48.53'-W108°55.88'  
L-9, H-3

MYTON  
112.7 MTU  
Chan 74  
N40°08.95'-W110°07.62'  
L-9-11, H-3

CARBON  
115.5 PUC  
Chan 102  
N39°36.19'  
W110°45.21'  
L-9, H-3

HANKSVILLE  
115.9 HVE  
Chan 106  
N38°25.01'-W110°41.98'  
L-9, H-3



NOTE: Rwy 4 and 22 departures not authorized.  
NOTE: Rwy 11 and 29 departures require a  
minimum climb of 320' per NM to 9500'.

(NARRATIVE ON FOLLOWING PAGE)

NOTE: Chart not to scale.

GRAND MESA ONE DEPARTURE  
(GRAND1, GRAND) 03DEC98

GRAND JUNCTION, COLORADO  
GRAND JUNCTION RGNL (GJT)



DEPARTURE ROUTE DESCRIPTION

Fly assigned heading for vectors to assigned fix/route. Maintain 14000 or assigned lower altitude. Expect filed altitude 10 minutes after departure.

LOST COMMUNICATIONS: If no transmissions are received within 1 minute after departure, Runway 11: Climbing right turn direct to JNC VOR/DME; Runway 29: Climb to 6000' then climbing left turn direct to JNC VOR/DME. Aircraft departing JNC R-221 clockwise JNC R-060, depart JNC VOR/DME on course. All other aircraft climb in JNC VOR/DME holding pattern (hold SW, left turns, 075° inbound) to cross JNC VOR/DME at or above: R-061 clockwise R-130 9500'; R-131 clockwise R-220 10500'.

SW-1, 30 JAN 2020 to 27 FEB 2020

SW-1, 30 JAN 2020 to 27 FEB 2020

(NOKXI1.NOKXI) 16035

# NOKXI ONE DEPARTURE (RNAV)

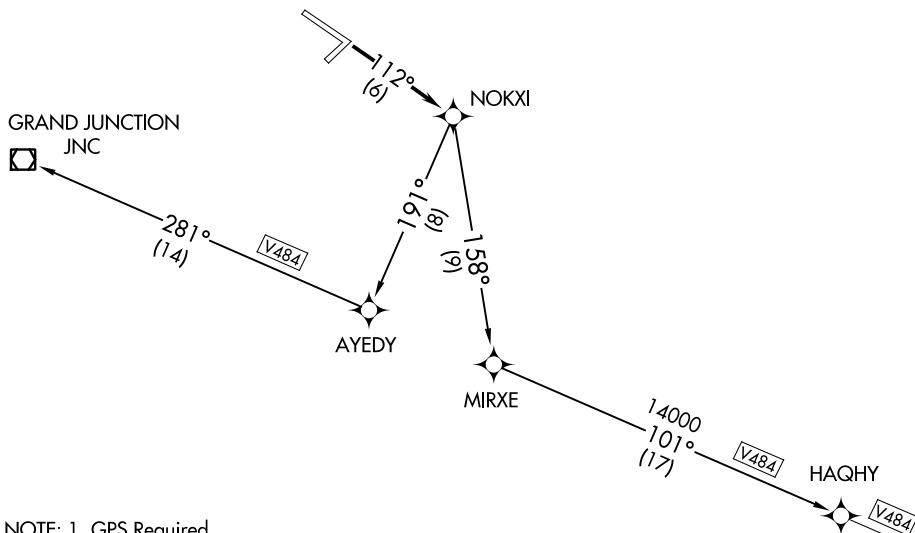
AL-634 (FAA)

GRAND JUNCTION RGNL (GJT)

GRAND JUNCTION, COLORADO

GRAND JUNCTION TOWER \*  
118.1 257.8

DENVER DEP CON \*  
119.7 317.4



NOTE: 1. GPS Required.  
2. RNAV 1

### TAKEOFF MINIMUMS:

Rwy 4, 22, 29: NA.

Rwy 11: GRAND JUNCTION TRANSITION: 2300-3 or standard with a minimum climb of 250' per NM from takeoff to 8000'. HAQHY TRANSITION: 5500-3 or standard with a minimum climb of 280' per NM from take-off to 11,000.

GRAND JUNCTION TRANSITION: Do not exceed 200K until AYEDY WP, cross JNC VOR/DME at MEA/MCA for direction of flight.

NOTE: Chart not to scale



### DEPARTURE ROUTE DESCRIPTION

TAKEOFF RUNWAY 11: Climb via 112° course to NOKXI WP.

GRAND JUNCTION TRANSITION (NOKXI1.JNC)

HAQHY TRANSITION (NOKXI1.HAQHY)

# NOKXI ONE DEPARTURE (RNAV)

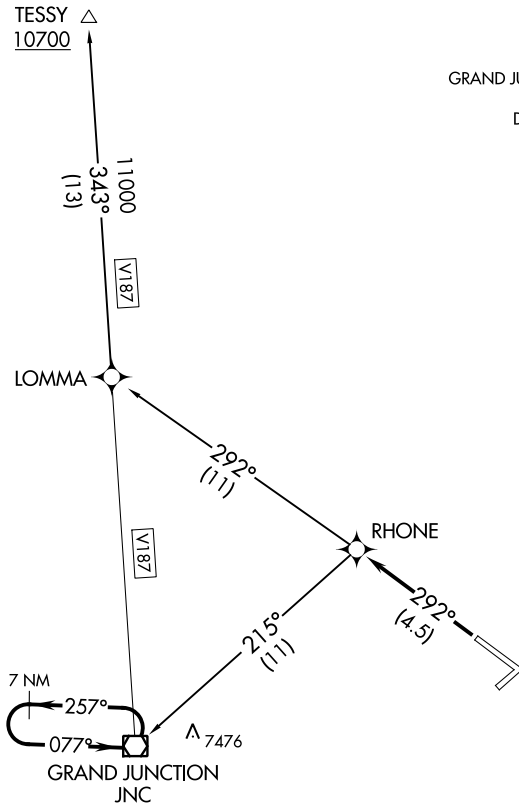
(NOKXI1.NOKXI) 15JUN00

GRAND JUNCTION, COLORADO  
GRAND JUNCTION RGNL (GJT)

SW-1, 30 JAN 2020 to 27 FEB 2020

SW-1, 30 JAN 2020 to 27 FEB 2020

ATIS 118.55  
 GND CON 121.7 257.8  
 GRAND JUNCTION TOWER \* 118.1 257.8  
 DENVER DEP CON \* 119.7 317.4  
 UNICOM 122.95



NOTE: GPS required.  
 NOTE: RNAV 1

TAKEOFF MINIMUMS

Rwy 4, 11, 22: NA.

Rwy 29: GRAND JUNCTION TRANSITION: 2700-2 or standard with a minimum climb of 280' per NM from take-off to 8000'

TESSY TRANSITION: 2700-2 or standard with a minimum climb of 220' per NM from LOMMA WP to TESSY INT or 210' per NM from take-off to 10700'.



DEPARTURE ROUTE DESCRIPTION

TAKEOFF RUNWAY 29: Climb via 292° course to RHONE WP.

GRAND JUNCTION TRANSITION (RHONE2.JNC): Aircraft departing JNC VORTAC R-221 CW R-060 depart on course. All other aircraft climb in JNC VORTAC holding pattern to cross JNC VORTAC at or above: R-061 CW R-130 9500, R-131 CW R-220 10500, before proceeding en route.

TESSY TRANSITION (RHONE2.TESSY)