

NDB GGF 359	APP CRS 327°	Rwy ldg 4797
		TDZE 3425
		Apt Elev 3425

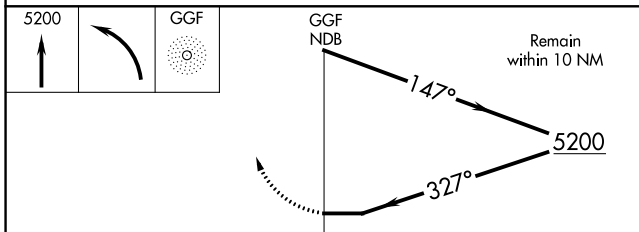
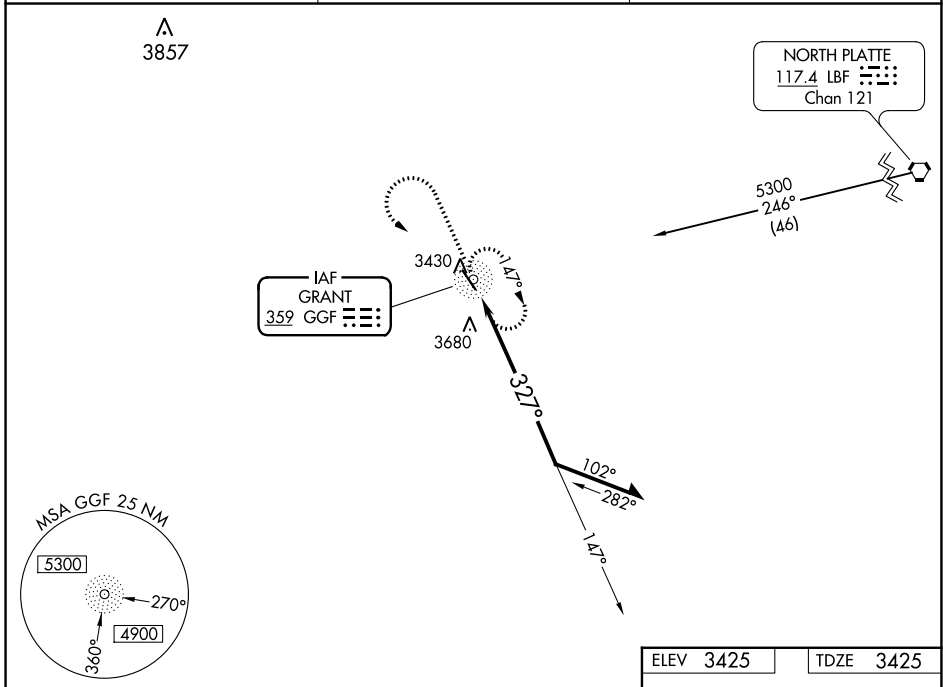
NDB RWY 33

GRANT MUNI (GGF)

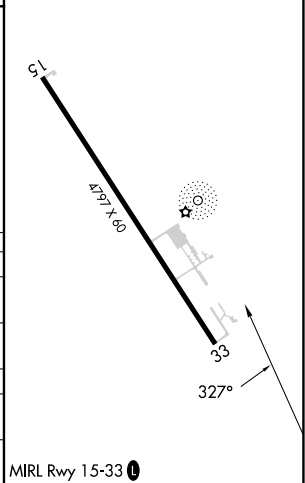
⚠ When local altimeter not received, use Ogallala altimeter setting.

MISSED APPROACH: Climb to 5200 then left turn direct GGF NDB and hold.

AWOS-3PT 118.025	DENVER CENTER 132.7 397.85	UNICOM 122.8 (CTAF)
----------------------------	--------------------------------------	-------------------------------



ELEV 3425	TDZE 3425
-----------	-----------



CATEGORY	A	B	C	D
S-33	4100-1	675 (700-1)		NA
C CIRCLING	4100-1	675 (700-1)		NA
OGALLALA ALTIMETER SETTING MINIMUMS				
S-33	4160-1	735 (800-1)		NA
C CIRCLING	4160-1	735 (800-1)		NA

MIRL Rwy 15-33

WAAS CH 81908 W15A	APP CRS 137°	Rwy Idg 4797 TDZE 3423 Apt Elev 3425
--	------------------------	---

RNAV (GPS) RWY 15

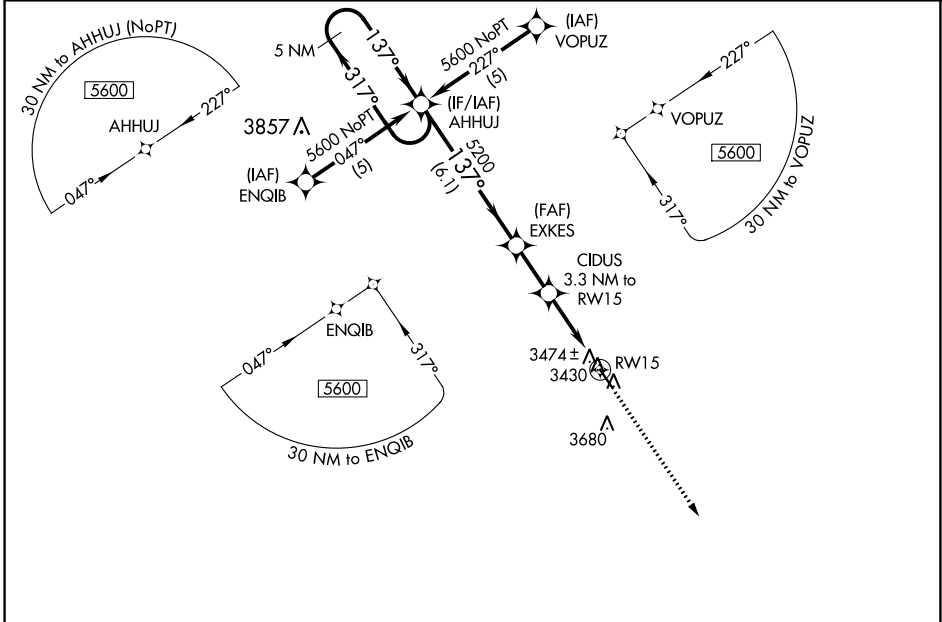
GRANT MUNI (GGF)

RNP APCH - GPS.

⚠ For uncompensated Baro-VNAV systems, LNAV/VNAV NA below -21°C or above 54°C. When local altimeter setting not received, use Ogallala altimeter setting and increase LPV DA to 3728 feet; increase LNAV/VNAV DA to 3888 feet and all visibilities ¼ SM; increase all MDAs 60 feet. VDP and Baro-VNAV NA when using Ogallala altimeter setting.

MISSED APPROACH:
Climb to 5600 direct
AYXOS and hold.

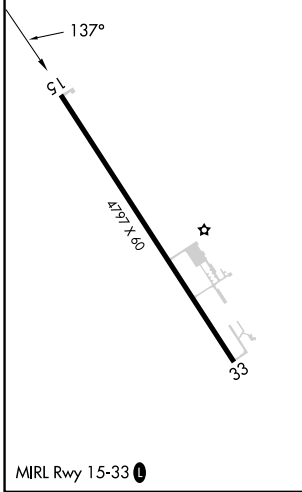
AWOS-3PT 118.025	DENVER CENTER 132.7 397.85	UNICOM 122.8 (CTAF)
----------------------------	--------------------------------------	-------------------------------



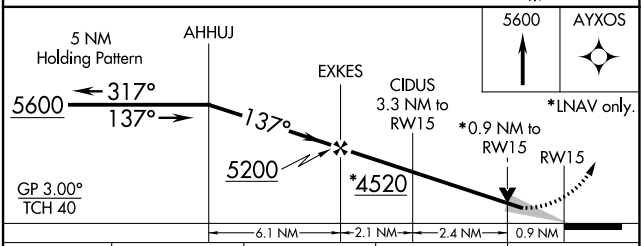
NC-2, 22 FEB 2024 to 21 MAR 2024

NC-2, 22 FEB 2024 to 21 MAR 2024

ELEV 3425	TDZE 3423
------------------	------------------



MIRL Rwy 15-33



CATEGORY	A	B	C	D
LPV DA	3673-1	250 (300-1)		NA
LNAV/VNAV DA	3833-1½	410 (500-1½)		NA
LNAV MDA	3740-1	317 (400-1)		NA
C CIRCLING	3900-1 475 (500-1)	3980-1 555 (600-1)		NA

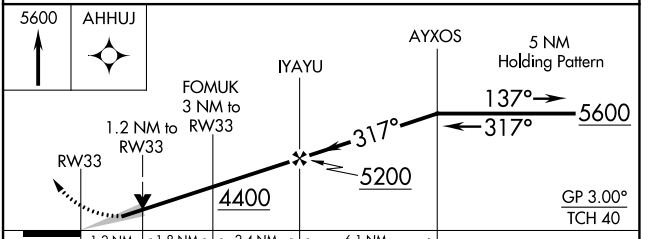
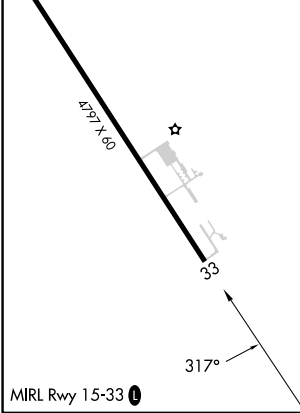
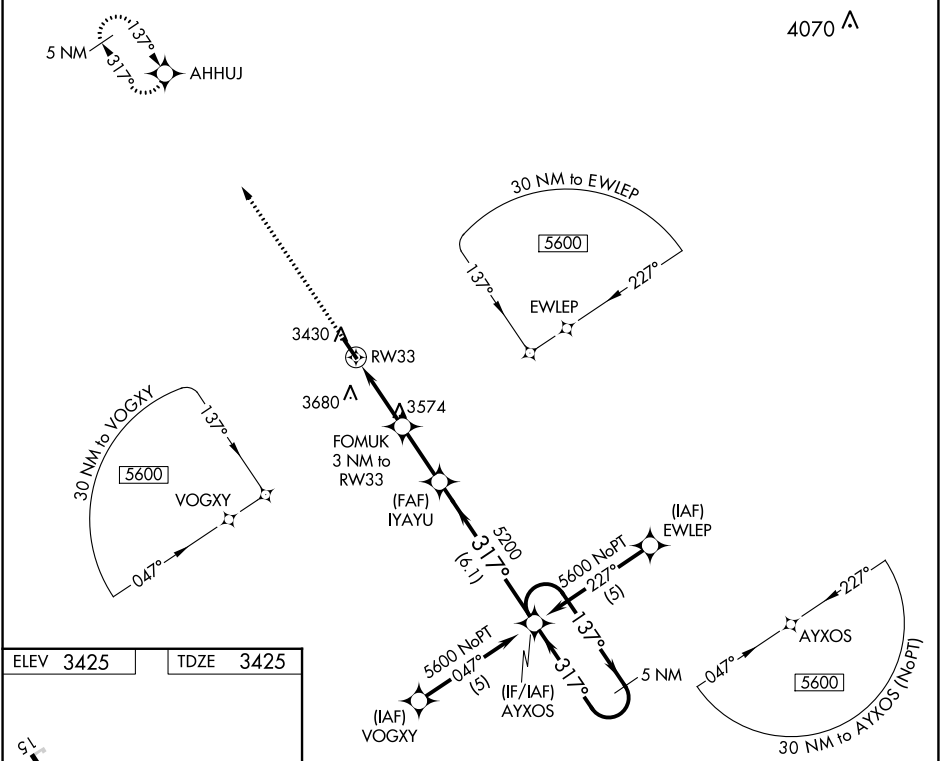
WAAS CH 62908 W33A	APP CRS 317°	Rwy Idg 4797 TDZE 3425 Apt Elev 3425
--	------------------------	---

RNAV (GPS) RWY 33

GRANT MUNI (GGF)

RNP APCH - GPS.	MISSED APPROACH: Climb to 5600 direct AHHUJ and hold.
<p>⚠ When local altimeter setting not received, use Ogallala altimeter setting and increase LPV DA to 3765 feet; increase all MDAs 60 feet. VDP NA when using Ogallala altimeter setting.</p>	

AWOS-3PT 118.025	DENVER CENTER 132.7 397.85	UNICOM 122.8 (CTAF) 0
----------------------------	--------------------------------------	---------------------------------



5600	AHHUJ	AYXOS	5 NM Holding Pattern
	FOMUK 3 NM to RW33	IYAYU	137° → 5600
	RW33		← 317°
	1.2 NM	1.8 NM	2.4 NM
	4400	5200	GP 3.00°
			TCH 40
CATEGORY	A	B	C
LPV DA	3710-1	285 (300-1)	NA
LNAV MDA	3840-1	415 (500-1)	NA
CIRCLING	3900-1 475 (500-1)	3980-1 555 (600-1)	NA

NC-2, 22 FEB 2024 to 21 MAR 2024

NC-2, 22 FEB 2024 to 21 MAR 2024

VOR/DME SAE 110.2 Chan 39	APP CRS 166°	Rwy Idg 4797 TDZE 3423 Apt Elev 3425
---	------------------------	---

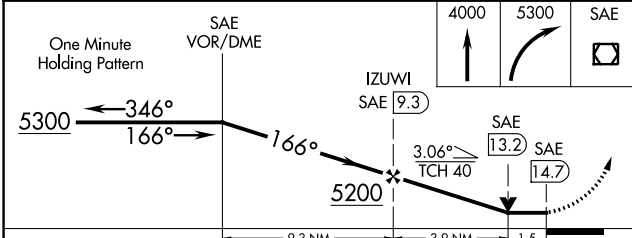
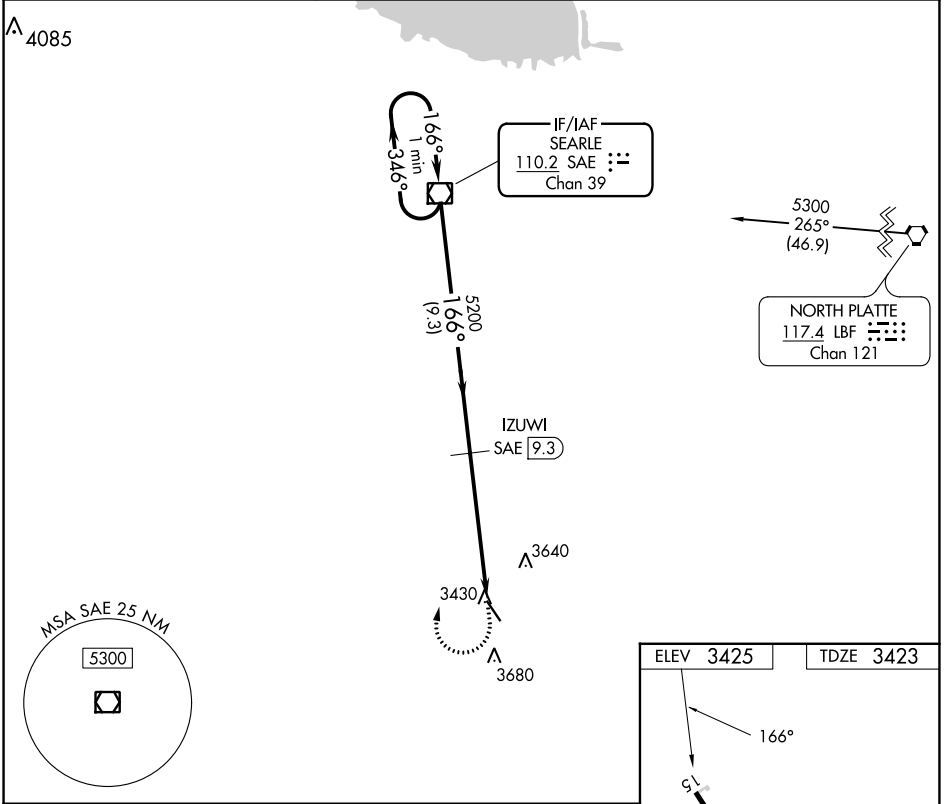
VOR/DME RWY 15

GRANT MUNI (GGF)

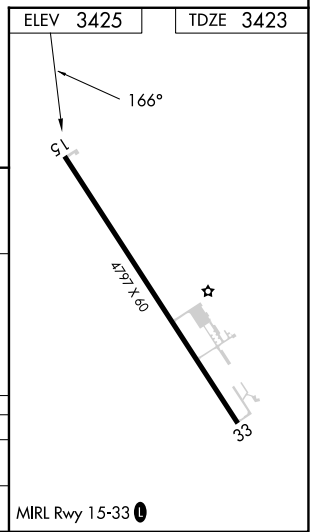
⚠ When local altimeter not received, use Ogallala altimeter setting and increase all MDA 60 feet.
⚠ VDP NA with Ogallala altimeter setting.

MISSED APPROACH: Climb to 4000 then climbing right turn to 5300 direct SAE VOR/DME and hold.

AWOS-3PT 118.025	DENVER CENTER 132.7 397.85	UNICOM 122.8 (CTAF) 📻
----------------------------	--------------------------------------	--



CATEGORY	A	B	C	D
S-15	3940-1	517 (600-1)		NA
📻 CIRCLING	3940-1 515 (600-1)	3980-1 555 (600-1)		NA



NC-2, 22 FEB 2024 to 21 MAR 2024

NC-2, 22 FEB 2024 to 21 MAR 2024