

LOC/DME I-JUH 109.35 Chan 30(Y)	APP CRS 276°	Rwy Idg 5002 TDZE 3142 Apt Elev 3178
---	------------------------	---

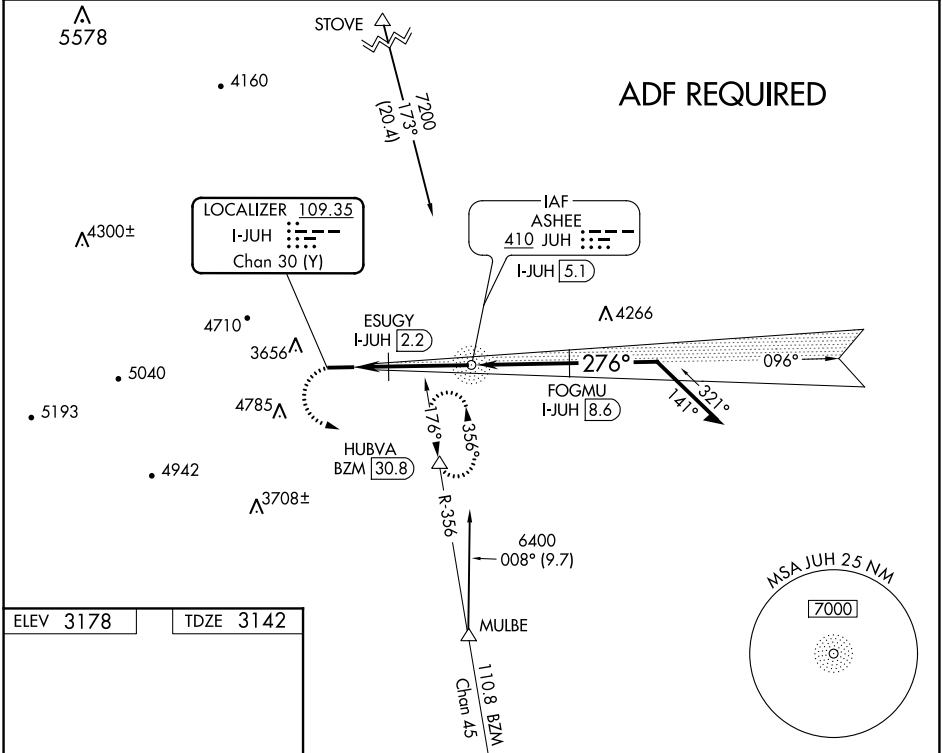
LOC RWY 28

ASHE COUNTY (GEV)

NA Circling Rwy 10 NA at night. DME required. Rwy 28 helicopter visibility reduction below 3/4 SM NA. VDP NA when using Marion/Wytheville altimeter setting. When local altimeter setting not received, use Marion/Wytheville altimeter setting and increase all MDA 160 feet and S-28 Cats C/D visibility 1/2 mile.

MISSED APPROACH: Climbing left turn to 7200 on heading 096° and BZM VOR/DME R-356 to HUBVA/BZM 30.8 DME and hold, continue climb-in-hold to 7200.

AWOS-3 120.675	ATLANTA CENTER 125.15 263.0	UNICOM 122.8 (CTAF) 0
--------------------------	---------------------------------------	---------------------------------

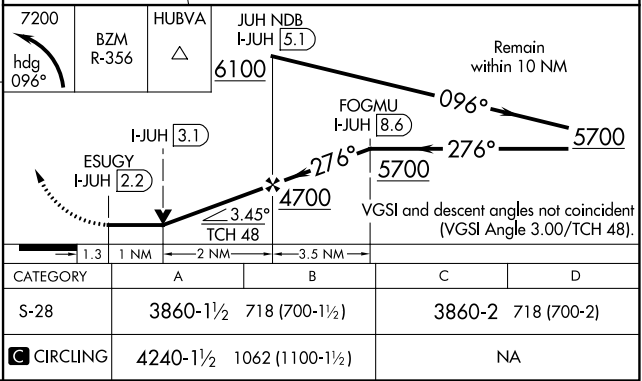


ELEV 3178	TDZE 3142
-----------	-----------

REIL Rwy 28 0
MIRL Rwy 10-28 0

5002 X 75
-1.8% UP

276° 4.3 NM from FAF



SE-2, 15 JUL 2021 to 12 AUG 2021

SE-2, 15 JUL 2021 to 12 AUG 2021

WAAS CH 70437 W28A	APP CRS 276°	Rwy Idg TDZE Apt Elev	5002 3142 3178
--	------------------------	-----------------------------	---

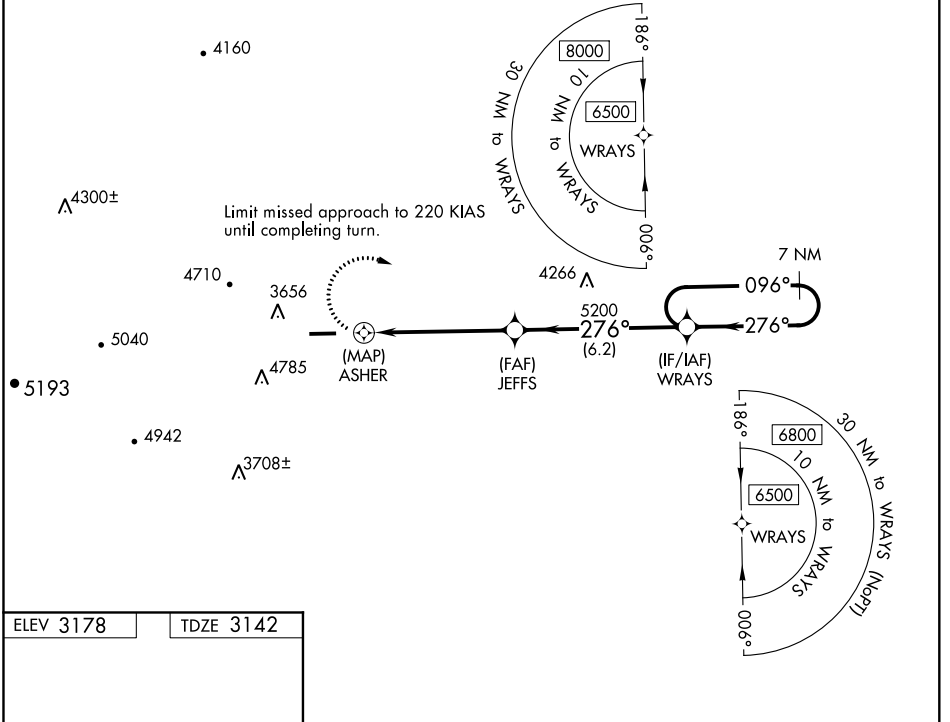
RNAV (GPS) RWY 28

ASHE COUNTY (GEV)

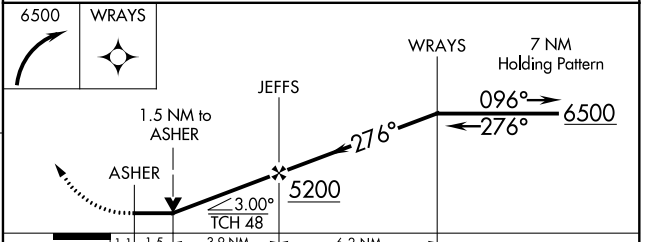
⚠ Circling Rwy 10 NA at night. Circling NA for Cat D north of Rwy 10-28. DME/DME RNP-0.3 NA. Rwy 28 helicopter visibility reduction below 3/4 SM NA. VDP NA when using Marion/Wytheville altimeter setting. When local altimeter setting not received, use Marion/Wytheville altimeter setting and increase all MDA 160 feet and LP and LNAV Cat B visibility 1/4 mile and LP and LNAV Cats C/D visibility 1/2 mile. Cats C/D Circling NA when using Marion/Wytheville altimeter setting.

⚠ MISSED APPROACH: Climbing right turn to 6500 direct WRAYS and hold.

AWOS-3 120.675	ATLANTA CENTER 125.15 263.0	UNICOM 122.8 (CTAF) ①
--------------------------	---------------------------------------	---------------------------------



ELEV 3178	TDZE 3142
REIL Rwy 28 ① MIRL Rwy 10-28 ①	



CATEGORY	A	B	C	D
LP MDA	3960-1¼	818 (800-1¼)	3960-2½	818 (800-2½)
LNAV MDA	4060-1¼	918 (900-1¼)	4060-2½	918 (900-2½)
ⓐ CIRCLING	4240-1¼ 1062 (1100-1¼)	4240-1½ 1062 (1100-1½)	5140-3	1962 (2000-3)

SE-2, 15 JUL 2021 to 12 AUG 2021

SE-2, 15 JUL 2021 to 12 AUG 2021